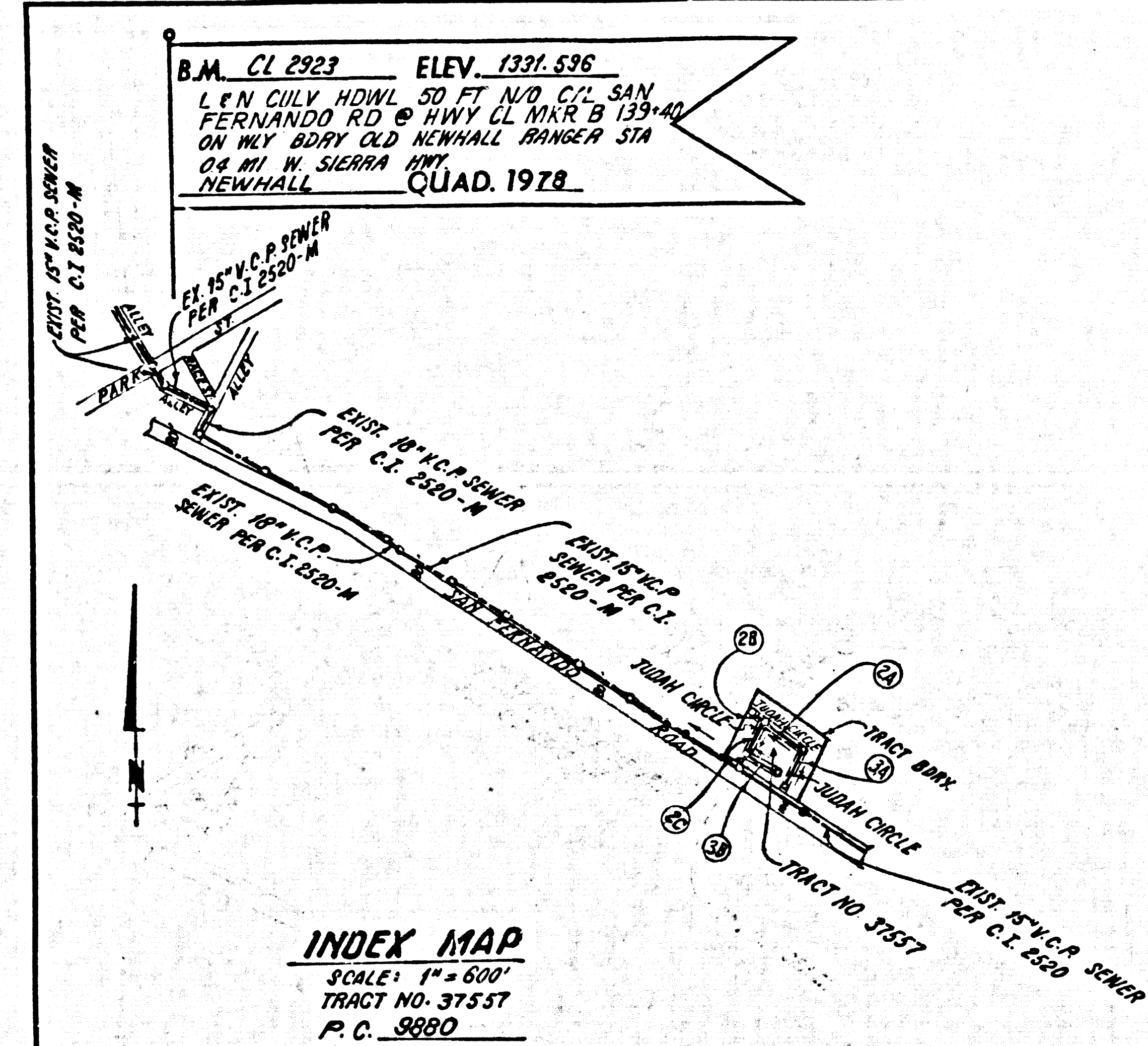


DOUBLE SCALE



INDEX MAP  
SCALE: 1" = 600'  
TRACT NO. 37557  
P. C. 9880  
NOTE: NUMBERS IN CIRCLES INDICATES PAGE NUMBER

REVISION NO. 1 DATE 10/13/57  
PAGE 2: REVISED PLAN AND PROFILE IN TOTAL  
PAGE 3: REVISED PLAN AND PROFILE IN TOTAL  
APPROVED BY: *Ralph David Sweet* 10/13/57  
OFFICE OF COUNTY ENGINEER

- GENERAL NOTES:
- ELEVATIONS ARE IN FEET ABOVE U.S.C. & G.S. SEA LEVEL DATUM OF 1929.
  - NO REVISIONS SHALL BE MADE IN THESE PLANS WITHOUT THE APPROVAL OF THE COUNTY ENGINEER.
  - NO REPRESENTATIVE OF THE COUNTY ENGINEER WILL BE ON SITE AT ANY PORTION OF THE WORK.
  - GRADES TO WHICH THIS IMPROVEMENT IS TO BE CONSTRUCTED ARE SHOWN ON PLANS AND PROFILE GRADE POINTS FOR TOP OF CURBS, CENTER LINE OF STREETS, OR CENTER LINE OF ALLEYS ARE SHOWN BY CIRCLES ON PROFILES. AT ALL POINTS BETWEEN DESIGNATED POINTS THE GRADE SHALL BE ESTABLISHED SO AS TO CONFORM TO A STRAIGHT LINE DRAWN BETWEEN SAID DESIGNATED POINTS.
  - THE PRIVATE ENGINEER SHALL FURNISH THE COUNTY ENGINEER WITH GRADE SHEETS AND STATIONING FOR ALL HOUSE LATERALS AND "T" OR "T" BRANCHES AND SHALL PROVIDE STAKES FOR THEM AT THEIR PROPER LOCATIONS WITH STATIONING PLAINLY MARKED. ALL HOUSE LATERALS SHALL BE CONSTRUCTED IN A STRAIGHT ALIGNMENT AT RIGHT ANGLES FROM THE MAIN LINE SEWER EXCEPT AS SHOWN ON THE PLANS. HOUSE LATERALS FROM CHIMNEYS SHALL NOT HAVE AN ANGLE OF LESS THAN 45° WITH THE MAIN LINE SEWER. ANY CHANGE IN ALIGNMENT SHALL BE REQUESTED IN WRITING BY THE PRIVATE ENGINEER.
  - THE PRIVATE ENGINEER SHALL FURNISH THE HOUSE LATERAL DEPTH AT THE PROPERTY LINE BELOW THE TOP OF CURB ELEVATION FOR EACH HOUSE LATERAL ON THE GRADE SHEET.
  - BEFORE WORK CAN BE STARTED, THE CONTRACTOR MUST OBTAIN A PERMIT TO EXCAVATE IN COUNTY STREETS FROM THE L.A. COUNTY ROAD DEPT., DISTRICT OFFICE NO. 8, AND PAY A FEE TO THE COUNTY ENGINEER, ROOM 408, 250 S. VERMONT AVE., L.A. 20880 TO COVER THE COST OF CONSTRUCTION INSPECTION AND RECORD PLANS.
  - IF WORK IS TO BE DONE IN A STATE HIGHWAY, A PERMIT MUST BE OBTAINED FROM THE STATE OF CALIFORNIA, DIVISION OF HIGHWAYS, 120 SOUTH SPRING STREET, LOS ANGELES, CALIFORNIA.
  - APPROVAL OF THIS PLAN BY THE COUNTY OF LOS ANGELES DOES NOT CONSTITUTE A REPRESENTATION AS TO THE ACCURACY OF THE LOCATION OF OR THE EXISTENCE OR NON-EXISTENCE OF ANY UNDERGROUND UTILITY PIPE, OR STRUCTURE WITHIN THE LIMITS OF THIS PROJECT. THIS NOTE APPLIES TO ALL PAGES.
  - REFER TO SECTION 7-10.6.1 OF THE STANDARD SPECIFICATIONS, REGARDING SAFETY ORDERS.
  - PRIOR TO THE ISSUANCE OF THE REQUIRED SEWER CONSTRUCTION PERMIT, THE CONTRACTOR SHALL OBTAIN AND FILE WITH THE COUNTY ENGINEER COPIES OF A PERMIT TO EXCAVATE IN COUNTY STREETS FROM THE LOS ANGELES COUNTY ROAD DEPARTMENT, A PERMIT FOR EXCAVATIONS AND TRENCHES FROM THE STATE OF CALIFORNIA, DIVISION OF INDUSTRIAL SAFETY AND A CERTIFICATE OF WORKERS' COMPENSATION INSURANCE WITH THE DEPARTMENT OF COUNTY ENGINEER, 530 SOUTH VERMONT, ROOM 408, LOS ANGELES, CALIFORNIA 90005, NAMED AS THE CERTIFICATE HOLDER TO BE NOTIFIED 30 DAYS PRIOR TO CANCELLATION OF POLICY.
- CONSTRUCTION NOTES:
- WORK SHALL BE CONSTRUCTED ACCORDING TO THE STANDARD SPECIFICATIONS FOR PUBLIC WORKS CONSTRUCTION (1957 EDITION) WITH 1960 SUPPLEMENTS AND COUNTY ENGINEER SPECIAL PROVISIONS FOR THE CONSTRUCTION OF SANITARY SEWERS DATED 3-27-57, AND SHALL BE PROCEEDED ONLY IN THE PRESENCE OF THE COUNTY ENGINEER.
  - THE CONTRACTOR SHALL NOTIFY THE CONSTRUCTION DIVISION BY TELEPHONE, IN LUDSON 8-4741, EXT. 8181, AT LEAST TWENTY-FOUR HOURS BEFORE STARTING ANY WORK UNDER THIS CONTRACT.
  - HOUSE LATERALS TO BE CONSTRUCTED WITH INVERTS AT R/W LINE 6 FEET BELOW FINISHED SURFACE AS NOTED.
  - TYPE OR THE BRANCHES MAY BE USED FOR CONNECTIONS TO MAINLINE SEWERS EXCEPT AS NOTED.
  - ALL STRUCTURES SHALL BE EITHER BRICK MANHOLES PER S-26 OR PRECAST CONCRETE MANHOLES PER S-26, EXCEPT AS NOTED.
  - PROTECT STAKES ON THE PROPERTY LINE OR PROPERTY LINES PRODUCED AT RIGHT ANGLES TO THE SEWER LINE AT THE CENTER LINE OF EACH MANHOLE.
  - MANHOLE TOPS OF UNIMPROVED RIGHTS OF WAY TO BE LEVEL WITH FINISHED GRADE.
  - VERTICAL CAST IRON JOINTS SHALL BE TYPE "D", OR "G" PER STANDARD SPECIFICATIONS SECTION 308-2.
  - IF A POWER POLE IS WITHIN THREE FEET OF THE SEWER, THE SEWER SHALL BE ENCASED, PER S-23, CASE II, TWO FEET ON EACH SIDE FROM THE POINT OF INTERFERENCE.
  - IF DURING THE COURSE OF CONSTRUCTION IT IS DETERMINED THAT THERE IS LESS THAN FOUR FEET OF COVER OVER THE TOP OF A MAIN LINE OR HOUSE LATERAL V.C.P. SEWER WHICH IS NOT INDICATED ON THE PLANS, THE PIPE SHALL BE ENCASED PER S-23, CASE II UNLESS OTHERWISE APPROVED BY THE COUNTY ENGINEER.
  - ALL JOINTS BETWEEN CAST IRON PIPE AND VENTURED CAST IRON SHALL BE MADE WITH A RUBBER GYVE JOINT, TYPE "C" OR "D", OTHER BUILDING IF NECESSARY PER STANDARD SPECIFICATIONS, SECTION 308-2.
  - SEWERS TO BE TESTED FOR LEAKAGE PER SECTION 306-1.8 OF THE STANDARD SPECIFICATIONS AND SPECIAL PROVISIONS.
  - REPLACE ALL TRENCHES WITHIN PAVED AREAS TO MEET L.A. COUNTY ROAD DEPT. OR CALIFORNIA STATE HIGHWAY REQUIREMENTS IN ACCORDANCE WITH PERMITS.
  - PER COMPLIANCE WITH SECTION 306.1, IF THE SPECIAL PROVISIONS WILL BE REQUIRED FOR BACKFILL IN STREETS, CERTIFICATION OF BACKFILL COMPACTION AND SAND EQUIVALENTS BY A QUALIFIED, PRECISE TESTING LABORATORY SHALL BE PROVIDED BY THE CONTRACTOR PRIOR TO THE ISSUANCE OF A CERTIFICATE OF PARTIAL ACCEPTANCE.
  - SPECIAL BACKFILL OR SEGMENT CONSTRUCTION: (A) BACKFILL TRENCH AND REPLACE OTHER EARTH SO AS TO ACHIEVE THE NATURAL OR FINISHED GRADES AND SLOPES SHOWN ON THE GRADING PLAN APPROVED FOR THIS DEVELOPMENT BY THE BUILDING A SAFETY DIVISION (B) ALL BACKFILL AND SANDS REPLACED SHALL BE COMPACTED TO A MINIMUM OF 90% MAXIMUM DENSITY PER A.S.T.M. STD. METHOD OF TEST D698-57T AS MODIFIED, ACCEPTABLE CERTIFICATION OF SUCH COMPACTION SHALL BE SUBMITTED TO THE ENVIRONMENTAL DEVELOPMENT DIVISION.

NO CONNECTION FOR THE DISPOSAL OF INDUSTRIAL WASTES SHALL BE MADE TO SEWERS SHOWN ON THESE DRAWINGS UNTIL A PERMIT FOR INDUSTRIAL WASTEWATER DISCHARGE HAS BEEN ISSUED BY THE SANITATION DISTRICTS FOR SAID CONNECTION.  
BEFORE BREAKING INTO OR CONSTRUCTION ON A COUNTY SANITATION DISTRICT SEWER AND PRIOR TO FINAL ACCEPTANCE OF THE PROJECT, SANITATION DISTRICT INSPECTOR SHALL BE NOTIFIED BY PHONE - 962-8605, 638-1161 SO THAT REQUIRED INSPECTION CAN BE MADE.

PRIVATE CONTRACT NO. 9880  
INDEX 246 S 133  
W.S. 62  
2 SHEETS, 3 PAGES  
49756  
SCALE: VERT. 1" = 8' SEPT. 1980  
HORIZ. 1" = 40'  
PREPARED IN THE OFFICES OF  
SISKAND ENGINEERING ASSOCIATES  
15230 BURBANK BLVD., VAN NUYS  
CALIFORNIA 91411 (818) 707-8550  
REG. C. E. NO. 21213  
BY: *Ralph David Sweet*

THE FOLLOWING LATEST REVISED STANDARD PLANS ON FILE IN THE OFFICE OF THE COUNTY ENGINEER SHALL APPLY IN THE CONSTRUCTION OF THIS PROJECT.

SECTION	NO.
MINIMUM PUBLIC SAFETY REQUIREMENTS	S-1
BRICK MANHOLE	S-2
STANDARD MANHOLE STEP	S-17
BERMINGHAM FOR SEWER PIPE	S-21
CRANKING AND ENCASING	S-23
TYPE OR THE BRANCH	S-24
ALLOWABLE TRENCH WIDTHS	S-25
ROCKING MANHOLE FRAME AND COVER	S-26
NON-BEHIND-OR-BEHIND PRECAST CONCRETE MANHOLE	S-28

COUNTY OF LOS ANGELES, CALIFORNIA  
STEPHEN J. KUNICE, COUNTY ENGINEER  
WALTER E. GARRISON, CHIEF ENGINEER  
APPROVED: *Ralph David Sweet* 10/13/57  
CHECKED: *Ralph David Sweet* 10/13/57  
DATE: 10/13/57  
REG. C. E. NO. 16983  
SANTA CLARITA VALLEY BLDG. DIST. 8-2

