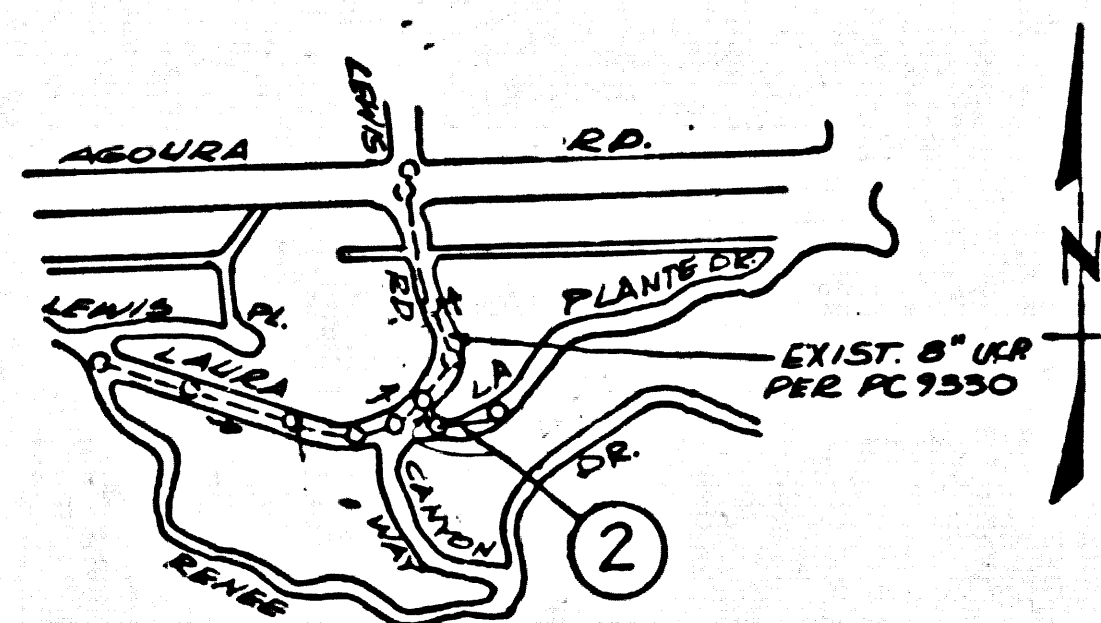


B.M. B.Y. 9050 ELEV. 993.186 B.M.M.F.-15  
 BEARS 1/4" IN LEAD IN THE CURB 3 FT.  
 1/4" BEHINDS OF CURB BETWEEN 23 FT.  
 N & 24 FT. E. OF INTERSECTION OF  
 AGUICA RD. & LEWIS RD.  
 MALIBU QUAD. 1972

DOUBLE SCALE



INDEX MAP  
 LAURA LA PLANTE DRIVE  
 SCALE 1"=600'  
 P.C. 9885

NOTE: NUMBER IN CIRCLE INDICATES PAGE NUMBER.

GENERAL NOTES:

1. ELEVATIONS ARE IN FEET ABOVE U.S.C. & G.S. SEA LEVEL DATUM OF 1929.
2. NO REVISIONS SHALL BE MADE IN THESE PLANS WITHOUT THE APPROVAL OF THE COUNTY ENGINEER.
3. NO REPRESENTATIVE OF THE COUNTY ENGINEER WILL SURVEY OR LAY OUT ANY PORTION OF THE WORK.
4. GRADES TO WHICH THIS IMPROVEMENT IS TO BE CONSTRUCTED ARE SHOWN ON PLANS AND PROFILES. GRADE POINTS FOR TOP OF CURBS, CENTER LINE OF STREETS, OR CENTER LINE OF ALLEYS ARE SHOWN BY CIRCLES ON PROFILES. AT ALL POINTS BETWEEN DESIGNATED POINTS THE GRADE SHALL BE ESTABLISHED SO AS TO CONFORM TO A STRAIGHT LINE DRAWN BETWEEN SAID DESIGNATED POINTS.
5. THE PRIVATE ENGINEER SHALL FURNISH THE COUNTY ENGINEER WITH GRADE SHEETS AND STATIONING FOR ALL HOUSE LATERALS AND "T" OR "Y" BRANCHES AND SHALL PROVIDE STAKES FOR THEM AT THEIR PROPER LOCATIONS WITH STATIONING PLAINLY MARKED. ALL HOUSE LATERALS SHALL BE CONSTRUCTED IN A STRAIGHT ALIGNMENT AT RIGHT ANGLES FROM THE MAIN LINE SEWER EXCEPT AS SHOWN ON THE PLANS. HOUSE LATERALS FROM CHIMNEYS SHALL NOT HAVE AN ANGLE OF LESS THAN 45° WITH THE MAIN LINE SEWER. ANY CHANGE IN ALIGNMENT SHALL BE REQUESTED IN WRITING BY THE PRIVATE ENGINEER.
6. THE PRIVATE ENGINEER SHALL FURNISH THE HOUSE LATERAL DEPTH AT THE PROPERTY LINE BELOW THE TOP OF CURB ELEVATION FOR EACH HOUSE LATERAL ON THE GRADE SHEET.
7. BEFORE WORK CAN BE STARTED, THE CONTRACTOR MUST OBTAIN A PERMIT TO EXCAVATE IN COUNTY STREETS FROM THE L.A. COUNTY ROAD DEPT., DISTRICT OFFICE NO. 28 AND PAY A FEE TO THE COUNTY ENGINEER, 3500 S. VERMONT AVE., LOS ANGELES, TO COVER THE COST OF CONSTRUCTION INSPECTION AND RECORD PLANS.
8. IF WORK IS TO BE DONE IN A STATE HIGHWAY, A PERMIT MUST BE OBTAINED FROM THE STATE OF CALIFORNIA, DIVISION OF HIGHWAY, 120 SOUTH SPRING STREET, LOS ANGELES, CALIFORNIA.
9. APPROVAL OF THE PLAN BY THE COUNTY OF LOS ANGELES DOES NOT CONSTITUTE A REPRESENTATION AS TO THE ACCURACY OF THE LOCATION OF OR THE EXISTENCE OR NON-EXISTENCE OF ANY UNDERGROUND UTILITY PIPE, OR STRUCTURE WITHIN THE LIMITS OF THE PROJECT. THIS NOTE APPLIES TO ALL PAGES.
10. PRIOR TO THE ISSUANCE OF THE STANDARD SPECIFICATIONS, BOARDING SANITY ORDERS, THE CONTRACTOR SHALL OBTAIN AND FILE WITH THE COUNTY ENGINEER COPIES OF A PERMIT TO EXCAVATE IN COUNTY STREETS FROM THE LOS ANGELES COUNTY ROAD DEPARTMENT & PERMIT FOR BROWARD AND TRENCHES FROM THE STATE OF CALIFORNIA, DIVISION OF INDUSTRIAL SAFETY AND A CERTIFICATE OF VIOLATIONS COMPLIANT WITH THE DEPARTMENT OF COUNTY ENGINEERS, 3500 S. VERMONT, RM. 304, LOS ANGELES, CALIFORNIA 90030 NAMED AS THE CERTIFICATE HOLDER. TO BE NOTIFIED 30 DAYS PRIOR TO CANCELLATION OF PERMIT.

CONSTRUCTION NOTES:

1. WORK SHALL BE CONSTRUCTED ACCORDING TO THE STANDARD SPECIFICATIONS FOR PUBLIC WORKS CONSTRUCTION (1979 EDITION) WITH 1980 SUPPLEMENTS AND COUNTY ENGINEER SPECIAL PROVISIONS FOR THE CONSTRUCTION OF SANITARY SEWERS DATED 11/27/80 AND SHALL BE PROSECUTED ONLY IN THE PRESENCE OF THE COUNTY ENGINEER.
2. THE CONTRACTOR SHALL NOTIFY THE GEN. ENG. DIVISION BY TELEPHONE, 755-2150, AT LEAST TWENTY-FOUR HOURS BEFORE EXISTING ANY WORK UNDER THE CONTRACT.
3. HOUSE LATERALS TO BE CONSTRUCTED WITH INVERTS AT PROPERTY LINE 6 FEET BELOW CURB GRADE EXCEPT AS NOTED.
4. WYE OR TE BRANCHES MAY BE USED FOR CONNECTIONS TO MAINLINE SEWERS EXCEPT AS NOTED.
5. ALL STRUCTURES SHALL BE EITHER BRICK MANHOLES PER S-3 OR PRECAST CONCRETE MANHOLES PER S-3A, EXCEPT AS NOTED.
6. PROVIDE STAKES ON THE PROPERTY LINE OR PROGRESS LINES PRODUCED AT RIGHT ANGLES TO THE SEWER LINE AT THE CENTER LINE OF EACH MANHOLE.
7. MANHOLE TOPS IN UNIMPROVED RIGHTS OF WAY TO BE SIX INCHES ABOVE FINISHED GRADE.
8. WYTHED CLAY PIPE JOINTS SHALL BE TYPE "B", 1" OR "1 1/2" PER STANDARD SPECIFICATIONS SECTION 206-2.
9. IF A POWER POLE IS WITHIN THREE FEET OF THE SEWER, THE SEWER SHALL BE ENCASED PER S-32, CASE II, TWO FEET ON EACH SIDE FROM THE POINT OF INTERFERENCE.
10. IF DURING THE COURSE OF CONSTRUCTION IT IS DETERMINED THAT THERE IS LESS THAN FOUR FEET OF COVER OVER THE TOP OF A MAIN LINE OR HOUSE LATERAL W.C.P. SEWER WHICH IS NOT INDICATED ON THE PLANS, THE PIPE SHALL BE ENCASED PER S-32, CASE II UNLESS OTHERWISE APPROVED BY THE COUNTY ENGINEER.
11. ALL JOINTS BETWEEN CAST IRON PIPE AND WYTHED CLAY PIPE SHALL BE MADE WITH A RUBBER SLEEVE JOINT, TYPE "C" OR "T" WITH BURNING IF NECESSARY PER STANDARD SPECIFICATIONS, SECTION 206-2.
12. SEWERS TO BE TESTED FOR LEAKAGE PER SECTION 206-1.9 OF THE STANDARD SPECIFICATIONS AND SPECIAL PROVISIONS.
13. REPAIRS TO ALL TRENCHES WITHIN PAVED AREAS TO MEET L.A. COUNTY ROAD DEPT. OR CALIFORNIA STATE HIGHWAY REQUIREMENTS IN ACCORDANCE WITH PERMITS.
14. FULL COMPLIANCE WITH SECTION 206-1.5 OF THE SPECIAL PROVISIONS WILL BE REQUIRED FOR BACTERIAL IN SEWERS. CERTIFICATION OF BACTERIAL CONSTRUCTION AND LAINE EQUIVALENTS BY A QUALIFIED, REGISTERED TESTING LABORATORY SHALL BE PROVIDED BY THE PERMITTEE PRIOR TO THE ISSUANCE OF A CERTIFICATE OF PARTIAL ACCEPTANCE.

PROFILE, ALIGNMENT AND GRADE OF  
**SANITARY SEWERS** PAGE 1  
 TO BE CONSTRUCTED IN  
**LAURA LA PLANTE DRIVE**

PRIVATE CONTRACT NO. 9885

W.S. 90  
 1 SHEET, 2 PAGES  
 SCALE: VERT. 1"=4'  
 HORIZ. 1"=40'  
 JULY 2, 1980  
 PREPARED IN THE OFFICES OF  
**BOYD BEASTROM & ASSOC.**  
 BY: *Boyd Beastron*  
 REG. C. E. No. 12674

49045

THE FOLLOWING LATEST REVISED STANDARD PLANS ON FILE IN THE OFFICE OF THE COUNTY ENGINEER SHALL APPLY IN THE CONSTRUCTION OF THIS PROJECT.

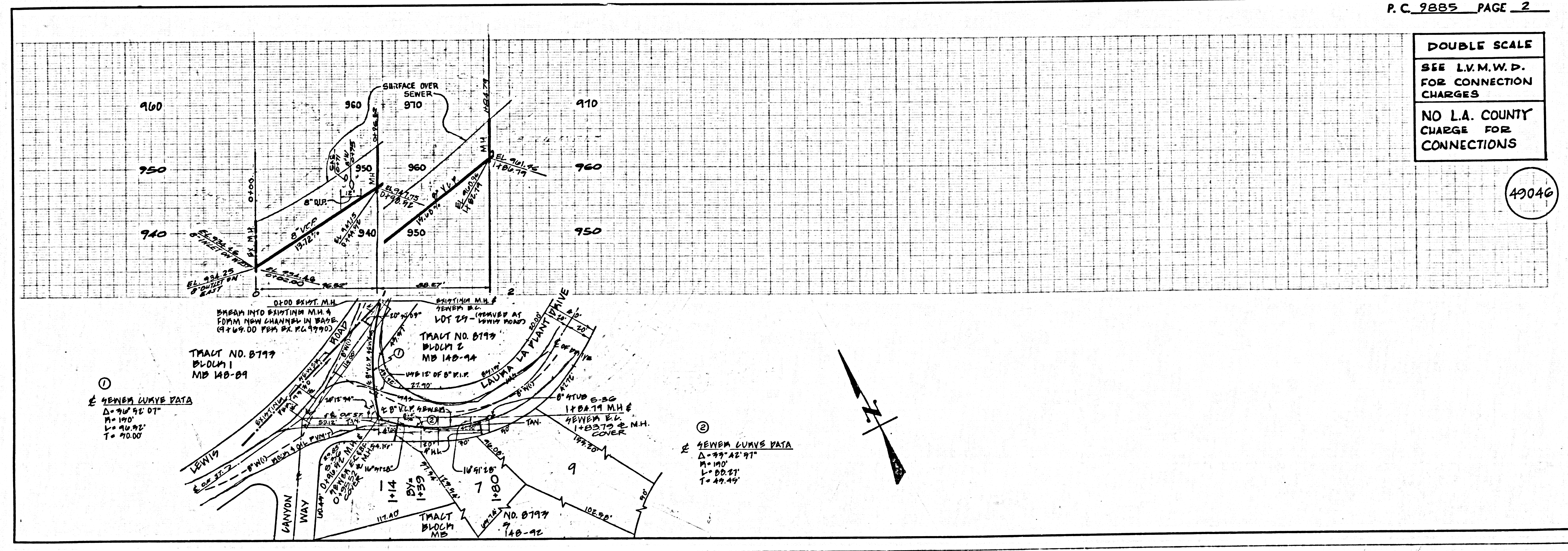
|                                      |      |
|--------------------------------------|------|
| LEGEND                               | S-1  |
| MINIMUM PUBLIC SAFETY REQUIREMENTS   | S-2  |
| BRICK MANHOLES                       | S-3  |
| STANDARD MANHOLE SET                 | S-3A |
| SEWING FOR SEWER PIPE                | S-3B |
| CRACKING AND BRACEMENT               | S-3C |
| WYE OR TE SUPPORT                    | S-3D |
| ALLOWABLE TRENCH WIDTHS              | S-3E |
| SEWING MANHOLE PLANS AND COVER       | S-3F |
| NON-BROWARD PRECAST CONCRETE MANHOLE | S-3G |

COUNTY OF LOS ANGELES, CALIFORNIA  
 STEPHEN J. EDWARDS, COUNTY ENGINEER LAS VEGAS MUNICIPAL WATER DISTRICT  
 APPROVED *Steph J. Edwards* 8-19-81  
 CHECKED *Ralph David Dierst* 1/13/81  
 H.W. Stokes  
 by *Edward O. Hall*  
 7-2-81  
 REG. C. E. No. 16873  
 CALABASAS BLDG. DIST. 72

P.C. 9885 PAGE 2

DOUBLE SCALE  
 SEE L.V.M.W.D.  
 FOR CONNECTION  
 CHARGES  
 NO L.A. COUNTY  
 CHARGE FOR  
 CONNECTIONS

49046



① GENERAL CURVE DATA  
 $\Delta = 90^\circ 45' 01''$   
 $R = 100'$   
 $L = 100.00'$   
 $T = 70.00'$

② GENERAL CURVE DATA  
 $\Delta = 99^\circ 42' 31''$   
 $R = 100'$   
 $L = 100.00'$   
 $T = 49.49'$