

B.M. BY 9125 ELEV 787.45
 C.S.B.M. MON IN NE WIND WALL OF BRIDGE NO
 8180 OVER TRIUNFO CREEK 16 FT N CL
 MULHOLLAND HWY. 186 FT E 40 TROUTDALE
 DR. MKD BM 58-43A 1969
 MALIBU QUAD. 1972

DOUBLE SCALE PRIVATE ENGINEERS NOTE TO CONTRACTORS

1. THE EXISTENCE AND LOCATION OF ANY UNDERGROUND UTILITY PIPES OR STRUCTURES SHOWN ON THESE PLANS WERE OBTAINED BY A SEARCH OF AVAILABLE RECORDS, TO THE BEST OF OUR KNOWLEDGE THERE NO EXISTING UTILITIES EXCEPT AS SHOWN ON THIS MAP.

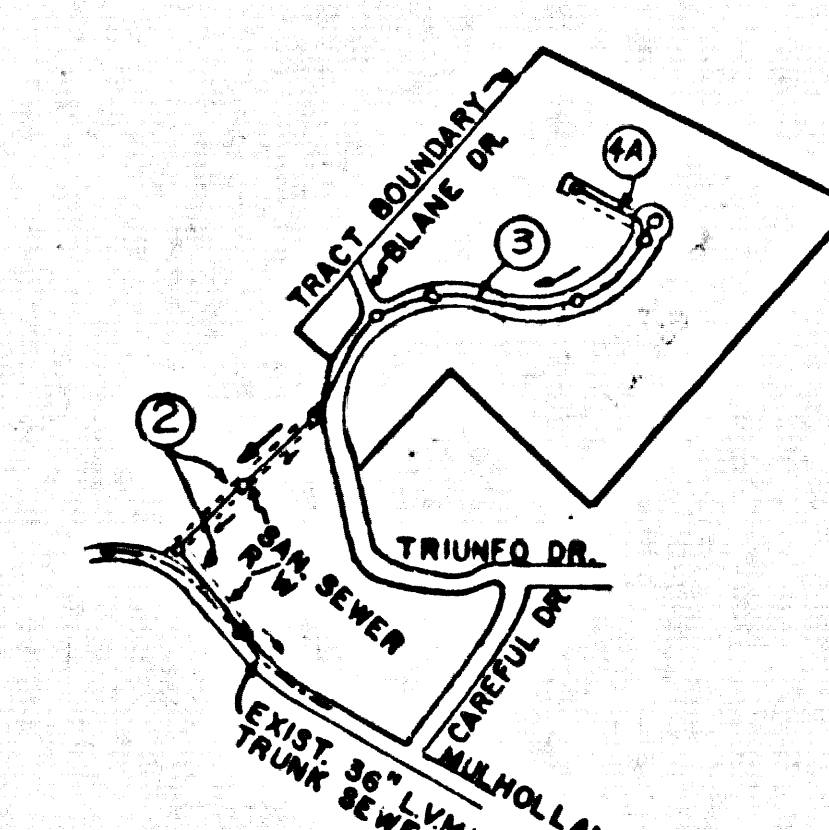
2. THE CONTRACTOR IS REQUIRED TO TAKE DUE PRECAUTIONARY MEASURES TO PROTECT THE UTILITY LINES SHOWN AND OTHER LINES NOT OF RECORD OR NOT SHOWN ON THESE PLANS.

3. CONTRACTOR MUST TAKE DUE PRECAUTIONARY MEASURE TO PROTECT EXISTING TREES, NO ROOTS OVER 2" IN DIAMETER ARE TO BE DISTURBED OR CUT.

REVISION NO. 1 DATE: 3-7-83

PAGE ONE REVISIONS ARE MODIFICATION OF INDEX MAP AND CHANGE OF B.M. FROM BY 5524 TO BY 9125
 PAGE TWO REVISIONS OMIT PAGE 28 STA. 0+71.78 TO STA. 8+22.22 AND RENUMBER AS PAGE 4.
 ADD PAGE 2 PREVIOUSLY KNOWN AS P.C. 10033 INVOLVES STA. 19+97.15 TO STA. 29+97.19 CREATES
 EQUATION STA. AT STA. 29+97.19 AHEAD = 16+22.34 BACK.
 PAGE 3 OMIT PAGE, INVOLVES STA. 6+12.22 TO STA. 14+45.30.
 PAGE 4 OMIT STA. 18+45.30 TO STA. 18+22.34 & RENUMBER AS PAGE 3.

APPROVED *Ralph David Deant* 3/9/83
 OFFICE OF COUNTY ENGINEER/R.E. NO. 11873



INDEX MAP
 SCALE 1" = 600'
 TRACT NO. 34514
 P.C. 9890

NOTE: NUMBERS IN CIRCLES INDICATE PAGE NUMBERS

CONSTRUCTION NOTES CONT'D.

18. FULL COMPLIANCE WITH PART IX OF THE SPECIAL PROVISIONS IS REQUIRED FOR THE INSTALLATION OF A.B.S. COMPOSITE PIPE.

19. MANHOLE WATER STOP GASKETS & CLAMPS ARE REQUIRED FOR THE CONNECTION OF A.B.S. COMPOSITE PIPE TO MANHOLE STRUCTURES.

20. A.B.S. COMPOSITE PIPE MUST BE USED FOR WYE & HOUSE LATERAL CONNECTIONS TO A.B.S. COMPOSITE MAINLINE SEWER PIPE.

21. A.B.S. COMPOSITE PIPE SHALL BE BEDDED IN CONFORMANCE WITH THE TABLE IN SECTION B-31 OF PART IX OF THE SPECIAL PROVISIONS.

22. 3-DEGREE DEFLECTION COUPLERS SHOULD BE USED TO ACCOMPLISH RADII OF CURVATURE LESS THAN 300'.

23. WYE BRANCHES ONLY MAY BE USED FOR CONNECTIONS TO MAINLINE SEWER IF A.B.S.C.P. IS USED.

24. ALL JOINTS BETWEEN CAST IRON PIPE & A.B.S.C.P. SHALL BE MADE WITH APPROVED FITTINGS.

REVISION NO. 2 DATE: 5/31/83

PAGE TWO: MOVE MAN HOLE PREVIOUSLY LOCATED AT STA. 8+155.63 TO STA. 8+170.00
 REVISED HORIZONTAL ALIGNMENT BETWEEN STA. 2+195.00 TO 8+170.00
 REVISED VERTICAL ALIGNMENT BETWEEN STA. 6+640.00 TO 7+137.43
 REVISED PLAN TO REFLECT AS BUILT LOCATIONS OF 4" H.L.'S.

PAGE THREE: REVISED PLAN TO REFLECT AS BUILT LOCATIONS OF 4" H.L.'S.

APPROVED *Ralph David Deant*
 OFFICE OF COUNTY ENGINEER / R.E. NO. 11853

GENERAL NOTES:

- ELEVATIONS ARE IN FEET ABOVE U.S.C. & G.S. SEA LEVEL DATUM OF 1929.
- NO BRIDGES SHALL BE BUILT OR REPAIRS MADE WITHOUT THE APPROVAL OF THE COUNTY ENGINEER.
- NO REPRESENTATIVE OF THE COUNTY ENGINEER WILL SURVEY OR LAY OUT ANY PORTION OF THE WORK.
- GRADES TO WHICH THIS IMPROVEMENT IS TO BE CONSTRUCTED ARE SHOWN ON PLANS AND PROFILES. GRADE POINTS FOR TOP OF CURBS, CENTER LINE OF STREETS, OR CENTER LINE OF ALLEYS ARE SHOWN BY CIRCLES ON PROFILES. AT ALL POINTS BETWEEN DESIGNATED POINTS THE GRADE SHALL BE ESTABLISHED SO AS TO CONFORM TO A STRAIGHT LINE DRAWN BETWEEN SAID DESIGNATED POINTS.
- THE PRIVATE ENGINEER SHALL FURNISH THE COUNTY ENGINEER WITH GRADE SHEETS AND STATIONING FOR ALL HOUSE LATERALS AND "T" OR "Y" BRANCHES AND SHALL PROVIDE GRADES FOR THEM AT THEIR PROPOSED LOCATIONS WITH STATIONING PLAINLY MARKED. ALL HOUSE LATERALS SHALL BE CONSTRUCTED IN A STRAIGHT ALIGNMENT AT RIGHT ANGLES FROM THE MAIN LINE SEWER EXCEPT AS SHOWN ON THE PLANS. HOUSE LATERALS FROM CHIMNEYS SHALL NOT HAVE AN ANGLE OF LESS THAN 45° WITH THE MAIN LINE SEWER. ANY CHANGE IN ALIGNMENT SHALL BE REQUESTED IN WRITING BY THE PRIVATE ENGINEER.
- THE PRIVATE ENGINEER SHALL FINISH THE HOUSE LATERAL OFFSET AT THE PROPERTY LINE BELOW THE TOP OF CURB ELEVATION FOR EACH HOUSE LATERAL ON THE GRADE SHEET.
- BEFORE WORK CAN BE STARTED, THE CONTRACTOR MUST OBTAIN A PERMIT TO EXCAVATE IN COUNTY STREETS FROM THE L.A. COUNTY ROAD DEPT., DISTRICT OFFICE NO. 3, AND PAY A FEE TO THE COUNTY ENGINEER, 350 S. VERMONT AVE., LOS ANGELES, CALIFORNIA, 90020 TO COVER THE COST OF CONSTRUCTION INSPECTION AND RECORD PLANS.
- IF WORK IS TO BE DONE IN A CITY HIGHWAY, A PERMIT MUST BE OBTAINED FROM THE CITY OF CALIFORNIA, DIVISION OF HIGHWAYS, 130 SOUTH SPRING STREET, LOS ANGELES, CALIFORNIA.
- APPROVAL OF THIS PLAN BY THE COUNTY OF LOS ANGELES DOES NOT CONSTITUTE A REPRESENTATION AS TO THE ACCURACY OF THE LOCATION OF OR THE EXISTENCE OR NON-EXISTENCE OF ANY UNDERGROUND UTILITY PIPE, OR STRUCTURE WITHIN THE LIMITS OF THE PROJECT. THIS NOTE APPLIES TO ALL PAGES.
- REFER TO SECTION 7-18.1 OF THE STANDARD SPECIFICATIONS, REGARDING SAFETY DEVICES.
- PRIOR TO THE ISSUANCE OF THE REQUIRED SEWER CONSTRUCTION PERMIT, THE CONTRACTOR SHALL OBTAIN AND FILE WITH THE COUNTY ENGINEER COPIES OF A PERMIT TO EXCAVATE IN COUNTY STREETS FROM THE LOS ANGELES COUNTY ROAD DEPARTMENT, A PERMIT FOR EXCAVATIONS AND TRENCHES FROM THE STATE OF CALIFORNIA, DIVISION OF INDUSTRIAL SAFETY AND A CERTIFICATE OF WORKERS COMPENSATION INSURANCE WITH THE DEPARTMENT OF COUNTY ENGINEER 350 S. VERMONT AVE., LOS ANGELES, CALIFORNIA, 90020, ROOM 406, NAMED AS CERTIFICATE HOLDER TO BE NOTIFIED 30 DAYS PRIOR TO CANCELLATION OF POLICY.

CONSTRUCTION NOTES:

- WORK SHALL BE CONSTRUCTED ACCORDING TO THE STANDARD SPECIFICATIONS FOR PUBLIC WORKS CONSTRUCTION (LATEST EDITION) AND COUNTY ENGINEER SPECIAL PROVISIONS FOR THE CONSTRUCTION OF SANITARY SEWERS DATED SEPT. 21, 1976, AND SHALL BE PROSECUTED ONLY IN THE PRESENCE OF THE COUNTY ENGINEER.
- THE CONTRACTOR SHALL NOTIFY THE ENVIRONMENTAL DEVELOPMENT DIVISION BY TELEPHONE, 738-2544, AT LEAST TWENTY FOUR HOURS BEFORE STARTING ANY WORK UNDER THIS CONTRACT.
- HOUSE LATERALS TO BE CONSTRUCTED WITH 1/4" RISE / FT. TO EDGE OF THE R/W LINE.
- WYE OR TEE BRANCHES MAY BE USED FOR CONNECTIONS TO MAINLINE SEWERS EXCEPT AS NOTED.
- ALL STRUCTURES SHALL BE EITHER BRICK MANHOLES PER S-3 OR PRECAST CONCRETE MANHOLES PER S-3A, EXCEPT AS NOTED.
- PROVIDE STAKES ON THE PROPERTY LINE OR PROPERTY LINES PRODUCED AT RIGHT ANGLES TO THE SEWER LINE AT THE CENTER LINE OF EACH MANHOLE.
- MANHOLE TOPS IN UNIMPROVED PORTS OF WAY TO BE SIX INCHES ABOVE FINISHED GRADE.
- VERTICED CLAY PIPE JOINTS SHALL BE TYPE "S", OR "O" PER STANDARD SPECIFICATIONS SECTION 306-3.
- IF A POWER POLE IS WITHIN THREE FEET OF THE SEWER, THE SEWER SHALL BE ENCASED, PER S-21, CASE 2, TWO FEET ON EACH SIDE FROM THE POINT OF INTERFERENCE.
- IF BURNING THE COURSE OF CONSTRUCTION IT IS DETERMINED THAT THERE IS LESS THAN FOUR FEET OF COVER OVER THE TOP OF A MAIN LINE OR HOUSE LATERAL V.C.P. SEWER WHICH IS NOT INDICATED ON THE PLANS, THE PIPE SHALL BE ENCASED PER S-21, CASE 2, UNLESS OTHERWISE APPROVED BY THE COUNTY ENGINEER.
- ALL JOINTS BETWEEN CAST IRON PIPE AND VERTICED CLAY PIPE SHALL BE MADE WITH A RUBBER SLEEVE JOINT, TYPE "C" OR "W", (WITH SHIMMING IF NECESSARY) PER STANDARD SPECIFICATIONS, SECTION 306-2.
- SEWERS TO BE TESTED FOR LEAKAGE PER SECTION 306-1.9 OF THE STANDARD SPECIFICATIONS AND SPECIAL PROVISIONS.
- REWORK ALL TRENCHES WITHIN PAVED AREAS TO MEET L.A. COUNTY ROAD DEPT. OR CALIFORNIA STATE HIGHWAY REQUIREMENTS IN ACCORDANCE WITH PERMITS.
- FULL COMPLIANCE WITH SECTION 304.3.3 OF THE SPECIAL PROVISIONS WILL BE REQUIRED FOR BACKFILL IN STREETS. CERTIFICATION OF BACKFILL COMPACTION AND SAND EQUIVALENTS BY A QUALIFIED, REGISTERED TESTING LABORATORY SHALL BE PROVIDED BY THE PERMITTEE PRIOR TO THE ISSUANCE OF A CERTIFICATE OF PARTIAL ACCEPTANCE.
- SPECIAL BACKFILL IN EASEMENT CONSTRUCTION (BACKFILL TRENCH AND REPLACE OTHER EARTH SO AS TO ACHIEVE THE NATURAL OR FINISHED GRADES AND SLOPES SHOWN ON THE GRADING PLAN AND APPROVED FOR THIS PROJECT BY THE BUILDING & SAFETY DIVISION, (B) ALL BACKFILL AND EARTH REPLACED SHALL BE COMPACTED TO A MINIMUM OF 90% OF MAXIMUM DENSITY PER ASTM METHOD OF TEST D-1557 AS MODIFIED. ACCEPTABLE CERTIFICATION OF SUCH COMPACTION SHALL BE SUBMITTED TO THE ENVIRONMENTAL DEVELOPMENT DIVISION.

SANITARY SEWERS PAGE 1

TO BE CONSTRUCTED IN
 R/W N/O MULHOLLAND HWY.
 8 IN TRIUNFO DRIVE
 & TRACT NO. 34514

PRIVATE CONTRACT NO. 9890
 C-250
 W.S. 93
 2 SHEETS, 4 PAGES

SCALE: VERT. 1" = 4'
 HORIZ. 1" = 40'

SEPT. 1981

PREPARED IN THE OFFICES OF
ROSECRANS & ASSOCIATES
 2825 AGOURA RD., SUITE 7
 AGOURA CALIF. 91503 (213)889-7445

BY: *Ernest R. Miera*
 FERRANCO R. MIERA ECE 24908

THE FOLLOWING LATEST REVISED STANDARD PLANS ON FILE IN THE OFFICE OF THE COUNTY ENGINEER SHALL APPLY IN THE CONSTRUCTION OF THIS PROJECT:

GROUND	S-1
MINIMUM PUBLIC SAFETY REQUIREMENTS	S-2
BRICK MANHOLE	S-3
STANDARD MANHOLE STD.	S-3A
REWORK FOR SEWER PIPE	S-3B
CRABBING AND BRICKSETTING	S-3C
WYE OR TEE SUPPORT	S-3D
ALWAYS TRENCH WIDTH	S-3E
LOCKING MANHOLE FRAME AND COVER	S-3F
NON-REINFORCED PRECAST CONCRETE MANHOLE	S-3G
EROSION PROTECTION	S-3H
ANCHOR BLOCK	S-3I
SPECIAL HOUSE LATERAL	S-3J
CHIMNEY PIPE & BASE	S-3K

COUNTY OF LOS ANGELES, CALIFORNIA
 STEPHEN J. KOONCE, COUNTY ENGINEER LAS VIRGENES MUNICIPAL WATER DISTRICT

APPROVED *Alvin J. Smith* 11/1/82
 DATE

APPROVED *New Stuber* 11/1/82
 DATE

CHECKED *Ralph David Deant*
 DATE

ENC. NO. 16773

CALABASAS BLDG. DIST. 9.1

