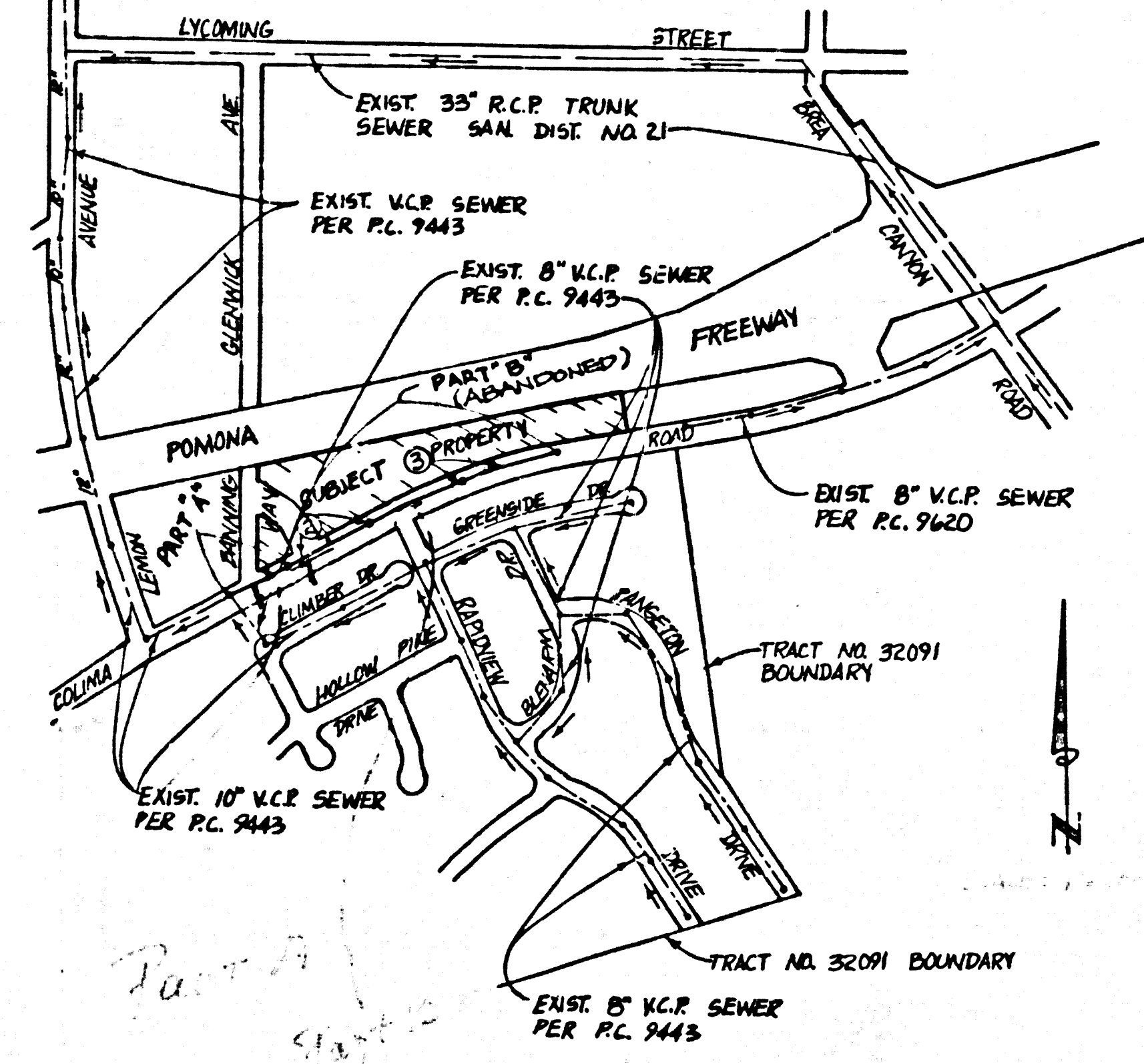


B.M. C.G. 4222 ELEV. 572.281
 C.S.M. MONUMENT IN E. WALL OF CATCH
 BASIN 42' NORTH OF E. COLIMA ROAD 1'
 127' EAST OF E. LEMON AVENUE MARKED
 (B.M. 44-54 1975)
 OTTERBEIN QUAD. 1975.

REVISION NO. 1 DATE 2-26-80
 P.C. 9898 CHANGED TO
 P.C. 9898-A & P.C. 9898-B
 APPROVED: *Doan Johnson*
 OFFICE OF COUNTY ENGINEER.



INDEX MAP
 SCALE 1"=600'
 P.C. 9898-A COLIMA ROAD
 9898-B (ABAND.)
 NOTE: NUMBER IN CIRCLE INDICATES
 PAGE NUMBER.

NO CONNECTION FOR THE DISPOSAL OF INDUSTRIAL WASTES
 SHALL BE MADE TO SEWERS SHOWN ON THESE DRAWINGS UNTIL
 A PERMIT FOR INDUSTRIAL WASTEWATER DISCHARGE HAS BEEN
 ISSUED BY THE SANITATION DISTRICTS FOR SAID CONNECTION.
 BEFORE BREAKING INTO OR CONSTRUCTION ON A COUNTY
 SANITATION DISTRICT SEWER AND PRIOR TO FINAL
 ACCEPTANCE OF THE PROJECT, SANITATION DISTRICT
 INSPECTOR SHALL BE NOTIFIED BY PHONE - 962-8605,
 898-8664 SO THAT REQUIRED INSPECTION CAN BE MADE.

GENERAL NOTES: DOUBLE SCALE

- ELEVATIONS ARE IN FEET ABOVE U.S. & G.S. SEA LEVEL DATUM '29.
- NO REVISIONS SHALL BE MADE IN THESE PLANS WITHOUT THE APPROVAL OF THE COUNTY ENGINEER.
- NO REPRESENTATIVE OF THE COUNTY ENGINEER WILL BE ON SITE AT ANY PORTION OF THE WORK.
- GRADES TO WHICH THIS IMPROVEMENT IS TO BE CONSTRUCTED ARE SHOWN ON PLANS AND PROFILE GRADE POINTS FOR TOP OF CURBS, CENTER LINE OF STREETS, OR CENTER LINE OF ALLEYS ARE SHOWN BY CIRCLES ON PROFILES AT ALL POINTS BETWEEN DESIGNATED POINTS THE GRADE SHALL BE ESTABLISHED SO AS TO CONFORM TO A STRAIGHT LINE DRAWN BETWEEN SAID DESIGNATED POINTS.
- THE PRIVATE ENGINEER SHALL FURNISH THE COUNTY ENGINEER WITH GRADE SHEETS AND STATING FOR ALL HOUSE LATERALS AND "T" OR "T" BRANCHES AND SHALL PROVIDE STAKES FOR THEM AT THEIR PROPER LOCATIONS WITH STATIONING PLAINLY MARKED. ALL HOUSE LATERALS SHALL BE CONSTRUCTED IN A STRAIGHT ALIGNMENT AT RIGHT ANGLES FROM THE MAIN LINE SEWER EXCEPT AS SHOWN ON THE PLANS. HOUSE LATERALS FROM CHIMNEYS SHALL NOT HAVE AN ANGLE OF LESS THAN 45° WITH THE MAIN LINE SEWER. ANY CHANGE IN ALIGNMENT SHALL BE REQUESTED IN WRITING BY THE PRIVATE ENGINEER.
- THE PRIVATE ENGINEER SHALL FURNISH THE HOUSE LATERAL DEPTH AT THE PROPERTY LINE BELOW THE TOP OF CURB ELEVATION FOR EACH HOUSE LATERAL ON THE GRADE SHEET.
- BEFORE WORK CAN BE STARTED, THE CONTRACTOR MUST OBTAIN A PERMIT TO EXCAVATE FROM THE L.A. COUNTY ROAD DEPT., DISTRICT OFFICE NO. 1, AND PAY A FEE TO THE COUNTY ENGINEER, 201 E. BONITA AVE., SAN DIMAS REGIONAL OFFICE, TO COVER THE COST OF CONSTRUCTION INSPECTION AND RECORD PLANS.
- IF WORK IS TO BE DONE IN A STATE HIGHWAY, A PERMIT MUST BE OBTAINED FROM THE STATE OF CALIFORNIA, DIVISION OF HIGHWAYS, 128 SOUTH SPRING STREET, LOS ANGELES, CALIFORNIA.
- APPROVAL OF THIS PLAN BY THE COUNTY OF LOS ANGELES DOES NOT CONSTITUTE A REPRESENTATION AS TO THE ACCURACY OF THE LOCATION OF OR THE EXISTENCE OR NON-EXISTENCE OF ANY UNDERGROUND UTILITY PIPE, OR STRUCTURE WITHIN THE LIMITS OF THIS PROJECT. THIS NOTE APPLIES TO ALL PAGES.
- REFER TO SECTION 7-18.4.3 OF THE STANDARD SPECIFICATIONS, REGARDING SAFETY ORDERS.
- PRIOR TO ISSUANCE OF THE REQUIRED SEWER CONSTRUCTION PERMIT BY THE COUNTY ENGINEER, THE CONTRACTOR SHALL OBTAIN A PERMIT TO EXCAVATE FROM THE STATE OF CALIFORNIA, DEPARTMENT OF INDUSTRIAL RELATIONS, DIVISION OF INDUSTRIAL SAFETY AND SHALL FILE A CERTIFICATE OF WORKERS COMPENSATION INSURANCE AND LIABILITY INSURANCE WITH THE COUNTY ENGINEER NAMED AS CERTIFICATE HOLDER TO BE NOTIFIED 30 DAYS PRIOR TO CANCELLATION OF POLICY.

CONSTRUCTION NOTES:

- WORK SHALL BE CONSTRUCTED ACCORDING TO THE STANDARD SPECIFICATIONS FOR PUBLIC WORKS CONSTRUCTION (1978 EDITION WITH 1980 SUPPLEMENTS) AND COUNTY ENGINEER SPECIAL PROVISIONS FOR THE CONSTRUCTION OF SANITARY SEWERS DATED SEPTEMBER 1978.
- THE CONTRACTOR SHALL NOTIFY THE ENVIRONMENTAL DEVELOPMENT DIVISION BY TELEPHONE (213) 738-2158 AT LEAST TWENTY-FOUR HOURS BEFORE STARTING ANY WORK UNDER THIS CONTRACT.
- HOUSE LATERALS TO BE CONSTRUCTED WITH INVERTS AT PROPERTY LINE 6 FEET BELOW CURB GRADE EXCEPT AS NOTED.
- WYS OR BRANCHES MAY BE USED FOR CONNECTIONS TO ALIEN SEWERS EXCEPT AS NOTED.
- ALL STRUCTURES SHALL BE EITHER BRICK MANHOLES PER S-3 OR PRECAST CONCRETE MANHOLES PER S-36, EXCEPT AS NOTED.
- PROVIDE STAKES ON THE PROPERTY LINE OR PROPERTY LINES PRODUCE AT RIGHT ANGLES TO THE SEWER LINE AT THE CENTER LINE OF EACH MANHOLE.
- MANHOLE TOPS IN UNIMPROVED RIGHTS OF WAY TO BE SIX INCHES ABOVE FINISHED GRADE.
- WITHEDED CLAY PIPE JOINTS SHALL BE TYPE "B" OR "C" PER STANDARD SPECIFICATIONS SECTION 308-2.
- IF A POWER POLE IS WITHIN THREE FEET OF THE SEWER, THE SEWER SHALL BE ENCASED, PER S-23, CASE II, TWO FEET ON EACH SIDE FROM THE POINT OF INTERFERENCE.
- IF DURING THE COURSE OF CONSTRUCTION IT IS DETERMINED THAT THERE IS LESS THAN FOUR FEET OF COVER OVER THE TOP OF A MAIN LINE OR HOUSE LATERAL V.C.P. SEWER WHICH IS NOT INDICATED ON THE PLANS, THE PIPE SHALL BE ENCASED PER S-23, CASE II UNLESS OTHERWISE APPROVED BY THE COUNTY ENGINEER.
- ALL JOINTS BETWEEN CLAY PIPE AND WITHEDED CLAY PIPE SHALL BE MADE WITH A RUBBER SLEEVE JOINT, TYPE "C" OR "B", OTHER RUBBERING IF NECESSARY PER STANDARD SPECIFICATIONS SECTION 308-2.
- SEWERS TO BE TESTED FOR LEAKAGE PER SECTION 306.1.8 OF THE STANDARD SPECIFICATIONS AND SPECIAL PROVISIONS.
- RESURFACE ALL TRINCHES WITHIN PAVED AREAS TO MEET L.A. COUNTY ROAD DEPT. OR CALIFORNIA STATE HIGHWAY REQUIREMENTS IN ACCORDANCE WITH PERMITS.
- IN COMPLIANCE WITH SECTION 306.1.3 OF THE SPECIAL PROVISIONS WILL BE REQUIRED FOR BACKFILL IN STREETS. CERTIFICATION OF BACKFILL COMPACTION AND SAND EQUIVALENTS BY A QUALIFIED, REGISTERED TESTING LABORATORY SHALL BE PROVIDED BY THE PERMITTEE PRIOR TO THE ISSUANCE OF A CERTIFICATE OF PARTIAL ACCEPTANCE.

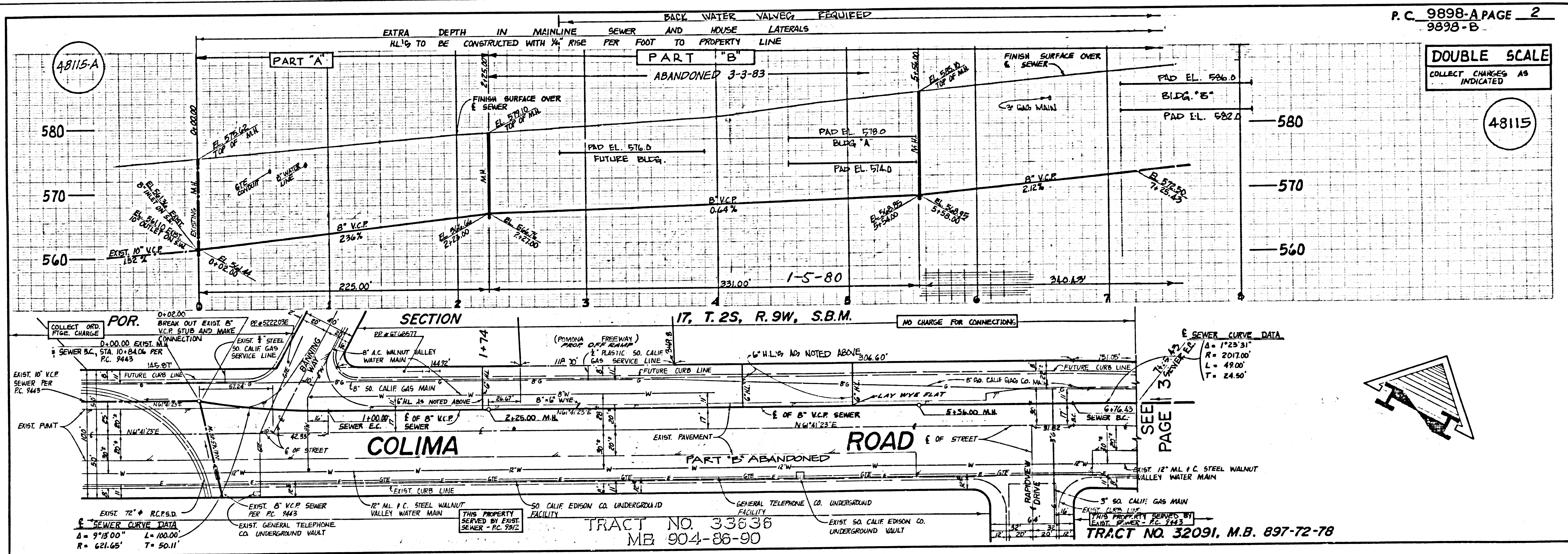
PROFILE, ALIGNMENT AND GRADE OF
SANITARY SEWERS PAGE 1
 TO BE CONSTRUCTED IN
COLIMA ROAD
 FROM 58' WEST OF BANNING WAY TO
 600' EAST OF RAPIDVIEW DRIVE
 PRIVATE CONTRACT NO. 9898-A
 9898-B

W.S. 39-B,3
 2 SHEETS, 3 PAGES
 SCALE: VERT. 1"=4'
 HORIZ. 1"=40'
 SEPTEMBER, 1980
 PREPARED IN THE OFFICES OF
 CARL W. DONOVAN & ASSOC. INC.
 1433 E. ALOSTA AVE. UNIT E
 GLENDALE, CALIF. 91740
 BY: *James J. Niska* 9-23-80
 REG. C. E. No. 21537

THE FOLLOWING LATEST REVISED STANDARD PLANS ON FILE IN THE OFFICE OF THE COUNTY ENGINEER SHALL APPLY IN THE CONSTRUCTION OF THIS PROJECT.

SECTION	1-1
MINIMUM PUBLIC SAFETY REQUIREMENTS	1-2
BRICK MANHOLE	1-3
STANDARD MANHOLE STOP	1-17
BEDDING FOR SEWER PIPE	1-21
CRUSHING AND BEDDING	1-22
WYS OR THE SUPPORT	1-26
ALLOWABLE TRENCH WIDTHS	1-28
LAKELAND MANHOLE FORM AND COVER	1-30
NON-REINFORCED PERCAST CONCRETE MANHOLE	1-36

COUNTY OF LOS ANGELES, CALIFORNIA
 STEPHEN J. KOONCE, COUNTY ENGINEER WALTER E. GARRISON, CHIEF ENGINEER
 SAN DIMAS REGIONAL ENGINEER (DATE) APPROVED: *Frank R. Davis* 10/30/80
 OFFICE ENGINEER
 CHECKED: *Ralph David Smith* 10/30/80
 DATE
 REG. C. E. NO. 16883
 LA PUENTE BLDG. DIST. 200

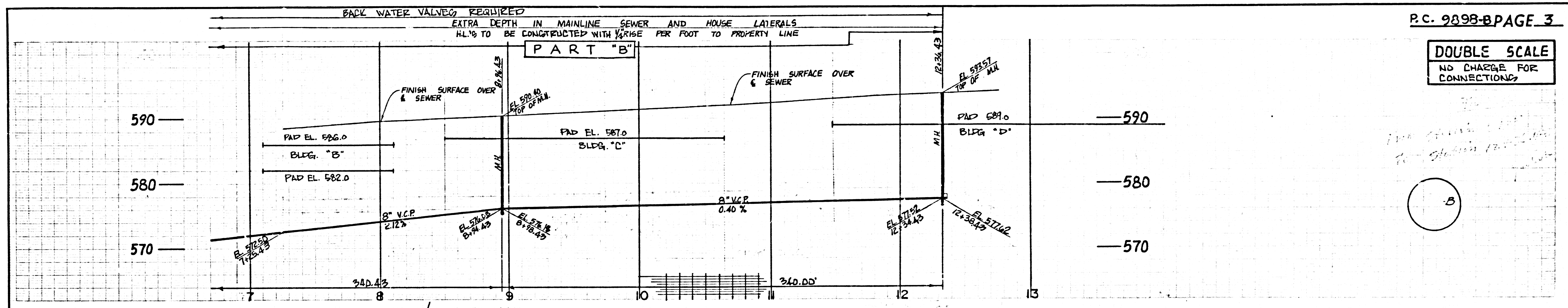


SECTION 17, T. 2S, R. 9W, S.B.M. NO CHARGE FOR CONNECTIONS.
 COLIMA ROAD
 TRACT NO. 33636 MB 904-86-90
 TRACT NO. 32091, M.B. 897-72-78
 LA COUNTY SEWER SHEET NO. 1 SOUTHERN CALIFORNIA BLUEPRINT CO. 283 2-80

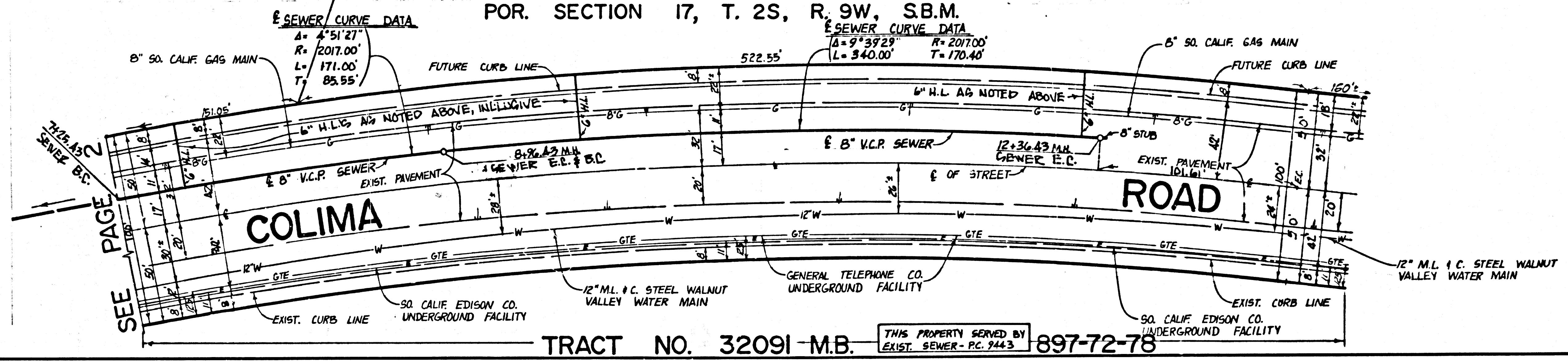
A-8888 C
B-8888

DAOR AMIJO

DOUBLE SCALE
NO CHARGE FOR CONNECTIONS



POR. SECTION 17, T. 2S, R. 9W, S.B.M.



TRACT NO. 32091-M.B. THIS PROPERTY SERVED BY EXIST. SEWER - P.C. 3443 897-72-78

PAGE

5
B-C 8888-B

COIWA AMIJO