

TRACT NO. 33406
PRIVATE CONTRACT NO. 9911

W.S. 93
11 SHEETS, 22 PAGES
SCALE: VERT. 1"=8'
HORIZ. 1"=40'
FEBRUARY 14, 1980
PREPARED IN THE OFFICES OF
ADVANCED DESIGN ASSOC.
23022 LARO DRIVE
AGOURA, CALIFORNIA, 91301
BY: *Robert D. Smith*
REG. C. E. NO. 10184

50101

THE FOLLOWING LATEST REVISION STANDARD PLANS ON FILE IN THE OFFICE OF THE COUNTY ENGINEER SHALL APPLY IN THE CONSTRUCTION OF THIS PROJECT:	
MINIMUM PUBLIC SAFETY REQUIREMENTS	S-3
BRICK MANHOLE	S-3
STANDARD MANHOLE STYP	S-17
MINIMUM FOR SEWER PIPE	S-28
CHANGING AND INCASMENT	S-28
WYE OR THE SUPPORT	S-28
ALLOWABLE TRENCH WIDTHS	S-28
LOCKING MANHOLE FRAME AND COVER	S-28
NON-BURNING PRECAST CONCRETE MANHOLE	S-28
EROSION PROTECTION IN SLOPED SLOPES	S-28
MANHOLE BLOCKS	S-28

COUNTY OF LOS ANGELES, CALIFORNIA
STEPHEN J. KOONCE COUNTY ENGINEER LAS VIRGENES MUNICIPAL WATER DISTRICT

APPROVED: *Robert D. Smith* 2/17/80
CHECKED: *Paul D. Smith* 2/17/80
REG. C. E. NO. 11883
CALIFORNIA REG. DIST. 91

- GENERAL NOTES: DOUBLE SCALE
- ELEVATIONS ARE IN FEET ABOVE U.S.C. & G.S. SEA LEVEL DATUM OF 1929.
 - NO REVISIONS SHALL BE MADE IN THESE PLANS WITHOUT THE APPROVAL OF THE COUNTY ENGINEER.
 - NO REPRESENTATIVE OF THE COUNTY ENGINEER WILL EXERCISE OR LAY OUT ANY PORTION OF THE WORK.
 - GRADES TO WHICH THIS IMPROVEMENT IS TO BE CONSTRUCTED ARE SHOWN ON PLANS AND PROFILE. GRADE POINTS FOR TOP OF CURBS, CENTER LINE OF STREETS, OR CENTER LINE OF ALLEYS ARE SHOWN BY CIRCLES ON PROFILES. AT ALL POINTS BETWEEN DESIGNATED POINTS THE GRADE SHALL BE ESTABLISHED SO AS TO CONFORM TO A STRAIGHT LINE DRAWN BETWEEN SAID DESIGNATED POINTS.
 - THE PRIVATE ENGINEER SHALL FURNISH THE COUNTY ENGINEER WITH GRADE SHEETS AND STATIONING FOR ALL HOUSE LATERALS AND "T" OR "Y" BRANCHES AND SHALL PROVIDE STAGES FOR TRIM AT THESE PROPER LOCATIONS WITH STATIONING PLAINLY MARKED. ALL HOUSE LATERALS SHALL BE CONSTRUCTED IN A STRAIGHT ALIGNMENT AT RIGHT ANGLES FROM THE MAIN LINE SEWER EXCEPT AS SHOWN ON THE PLANS. HOUSE LATERALS FROM CHIMNEYS SHALL NOT HAVE AN ANGLE OF LESS THAN 45° WITH THE MAIN LINE SEWER. ANY CHANGE IN ALIGNMENT SHALL BE REQUESTED IN WRITING BY THE PRIVATE ENGINEER.
 - THE PRIVATE ENGINEER SHALL FURNISH THE HOUSE LATERAL DEPTH AT THE PROPERTY LINE BELOW THE TOP OF CURB ELEVATION FOR EACH HOUSE LATERAL ON THE GRADE SHEET.
 - BEFORE WORK CAN BE STARTED, THE CONTRACTOR MUST OBTAIN A PERMIT TO EXCAVATE IN COUNTY STREETS FROM THE L.A. COUNTY ROAD DEPT., DISTRICT OFFICE NO. 3, AND PAY A FEE TO THE COUNTY ENGINEER, 540 N. HANCOCK AVENUE, LOS ANGELES, TO COVER THE COST OF CONSTRUCTION INSPECTION AND RECORD PLANS.
 - IF WORK IS TO BE DONE IN A STATE HIGHWAY, A PERMIT MUST BE OBTAINED FROM THE STATE OF CALIFORNIA, DIVISION OF HIGHWAYS, 130 SOUTH SPRING STREET, LOS ANGELES, CALIFORNIA.
 - APPROVAL OF THIS PLAN BY THE COUNTY OF LOS ANGELES DOES NOT CONSTITUTE A REPRESENTATION AS TO THE ACCURACY OF THE LOCATION OF OR THE EXISTENCE OR NON-EXISTENCE OF ANY UNDERGROUND UTILITY PIPE, OR STRUCTURE WITHIN THE LIMITS OF THIS PROJECT. THIS NOTE APPLIES TO ALL PAGES.
 - REFER TO SECTION 7-18.1.1 OF THE STANDARD SPECIFICATIONS, REGARDING SAFETY ORDERS.
 - PROVIDE TO THE CONTRACTOR THE REVISIONS AND SUPPLEMENTALS WHICH THE CONTRACTOR SHALL REVIEW AND SHALL BE RESPONSIBLE FOR THE REVISIONS AND SUPPLEMENTALS. THE CONTRACTOR SHALL BE RESPONSIBLE FOR THE REVISIONS AND SUPPLEMENTALS. THE CONTRACTOR SHALL BE RESPONSIBLE FOR THE REVISIONS AND SUPPLEMENTALS.
 - ISSUE AND VERIFY CONSTRUCTION PERMITS ON PAGES 5 THROUGH 7 THROUGH 14, UNTIL OUTLET SEWER, P.C. 9830 IS ACCEPTED.

- CONSTRUCTION NOTES:
- WORK SHALL BE CONSTRUCTED ACCORDING TO THE STANDARD SPECIFICATIONS FOR PUBLIC WORKS CONSTRUCTION (1979 EDITION) WITH ALL SUPPLEMENTALS AND COUNTY ENGINEER SPECIAL PROVISIONS FOR THE CONSTRUCTION OF SANITARY SEWERS BY SECTION 2-22.1.2.2.1 AND SHALL BE PROSECUTED ONLY IN THE PRESENCE OF THE COUNTY ENGINEER.
 - THE CONTRACTOR SHALL NOTIFY THE ENV. DEPT. DIVISION BY TELEPHONE, 538-8168 AT LEAST TWENTY-FOUR HOURS BEFORE STARTING ANY WORK UNDER THIS CONTRACT.
 - HOUSE LATERALS TO BE CONSTRUCTED WITH INVERTS AT PROPERTY LINE A FEET BELOW CURB GRADE EXCEPT AS NOTED.
 - WYE OR THE BRANCHES MAY BE USED FOR CONNECTIONS TO MAINLINE SEWERS EXCEPT AS NOTED.
 - ALL STRUCTURES SHALL BE SET ON PRECAST CONCRETE MANHOLES PER S-28, EXCEPT AS NOTED.
 - PROVIDE STAKES ON THE PROPERTY LINE OR PROPERTY LINES PRODUCED AT RIGHT ANGLES TO THE SEWER LINE AT THE CENTER LINE OF EACH MANHOLE.
 - MANHOLE TOPS IN UNIMPROVED AREAS OF WAY TO BE 18 INCHES ABOVE FINISHED GRADE.
 - VERIFIED CLAY PIPE JOINTS SHALL BE TYPE "B", OR "C" PER STANDARD SPECIFICATIONS SECTION 200-2.
 - IF A POWER POLE IS WITHIN THREE FEET OF THE SEWER, THE SEWER SHALL BE ENCASED, PER S-28, CASE II, TWO FEET ON EACH SIDE FROM THE POINT OF INTERFERENCE.
 - IF DURING THE COURSE OF CONSTRUCTION IT IS DETERMINED THAT THERE IS LESS THAN FOUR FEET OF COVER OVER THE TOP OF A MAIN LINE OR HOUSE LATERAL "Y" OR "T" SEWER WHICH IS NOT INDICATED ON THE PLANS, THE PIPE SHALL BE ENCASED PER S-28, CASE II, UNLESS OTHERWISE APPROVED BY THE COUNTY ENGINEER.
 - ALL JOINTS BETWEEN CLAY PIPE AND VERIFIED CLAY PIPE SHALL BE MADE WITH A RUBBER SLEEVE JOINT, TYPE "C" OR "D", WITH BUSHING IF NECESSARY PER STANDARD SPECIFICATIONS SECTION 200-2.
 - SEWERS TO BE TESTED FOR LEAKAGE PER SECTION 200-2.1.1 OF THE STANDARD SPECIFICATIONS AND SPECIAL PROVISIONS.
 - RESURFACE ALL TRENCHES WITHIN PAVED AREAS TO MEET L.A. COUNTY ROAD DEPT. OR CALIFORNIA STATE HIGHWAY REQUIREMENTS IN ACCORDANCE WITH PERMITS.
 - FULL COMPLIANCE WITH SECTION 200-2.1.1 OF THE SPECIAL PROVISIONS WILL BE REQUIRED FOR BACKFILL IN STREETS. CERTIFICATION OF BACKFILL COMPACTION AND SAND EQUIVALENTS BY A QUALIFIED REGISTERED TESTING LABORATORY SHALL BE PROVIDED BY THE PERMITTEE PRIOR TO THE ISSUANCE OF A CERTIFICATE OF PARTIAL ACCEPTANCE.

19. SPECIAL BACKFILL IN EMBANKMENT CONSTRUCTION:
 a. BRACKEL TRENCH AND REPLACE OTHER EREX 50 AS TO REMOVE THE MATERIAL OR FILLING DENSE AND SOLID. SHOW ON THE GRADING PLAN APPROVED FOR THIS DEVELOPMENT BY THE BUILDING AND SAFETY DIVISION.
 b. ALL BRACKEL AND OTHER FILLING SHALL BE COMPACTED TO A MINIMUM OF 90% OF AIR-DRY UNIT WEIGHT AS DETERMINED BY THE STANDARD METHOD (ASTM D-1557) AS MODIFIED. ACCEPTABLE CERTIFICATION OF SUCH COMPACTION SHALL BE SUBMITTED TO THE ENVIRONMENTAL DEVELOPMENT DIVISION.

CONSTRUCTION NOTES (CONT'D)
 20. FULL COMPLIANCE WITH PART II OF THE SPECIAL PROVISIONS IS REQUIRED FOR THE INSTALLATION OF A.B.S. COMPOSITE PIPE.
 21. MANHOLE WATER STOP GASKETS AND CLAMPS ARE REQUIRED FOR THE CONNECTION OF A.B.S. COMPOSITE PIPE TO AIR-ABLE STRUCTURES.
 22. A.B.S. SOLID WALL PIPE MUST BE USED FOR WYE AND HOUSE LATERAL CONNECTIONS TO A.B.S. COMPOSITE MAINLINE SEWER PIPES.
 23. A.B.S. COMPOSITE PIPE SHALL BE BEADED IN CONFORMANCE WITH THE TABLE IN SECTION B-3.1 OF PART II OF THE SPECIAL PROVISIONS.

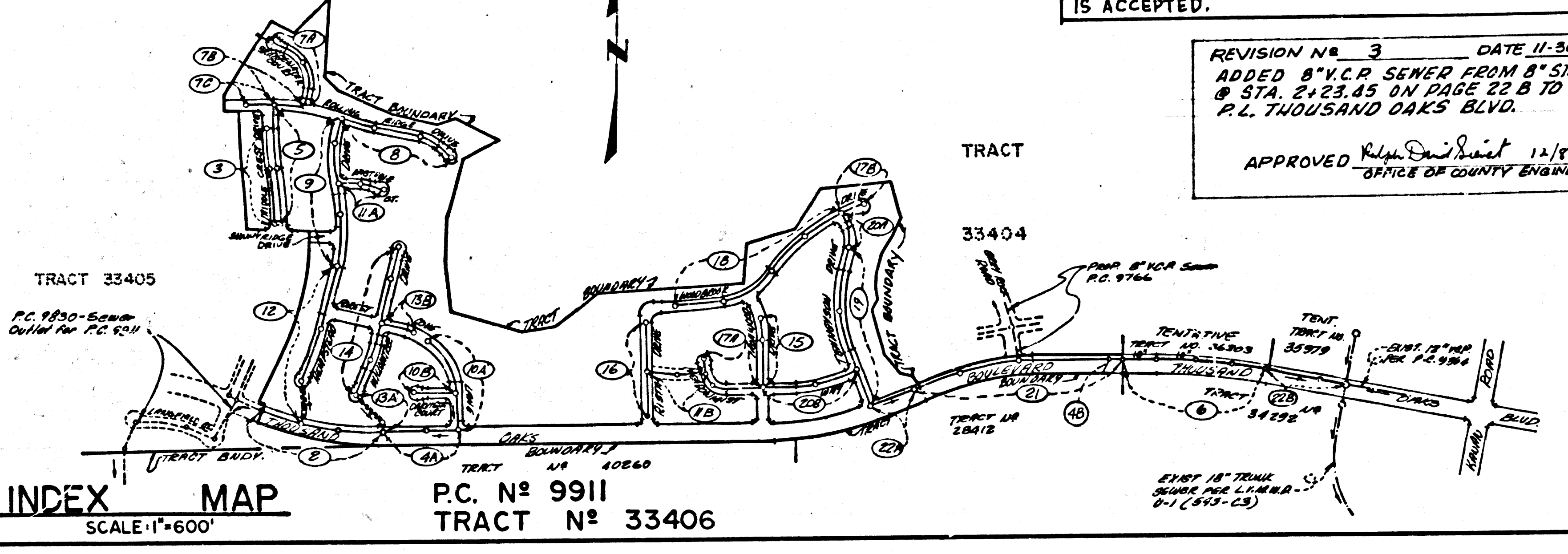
NOTE:
ISSUE NO HOUSE CONNECTION PERMITS ON PAGES 2 THRU 5 & 7 THRU 14, UNTIL OUTLET SEWER, P.C. 9830 IS ACCEPTED.

REVISION NO. 3 DATE: 11-30-82
 ADDED 8" V.C.P. SEWER FROM 8" S.W. @ STA. 2+23.45 ON PAGE 22 B TO HD. P.L. THOUSAND OAKS BLVD.
 APPROVED: *Robert D. Smith* 12/18/82
 OFFICE OF COUNTY ENGINEER

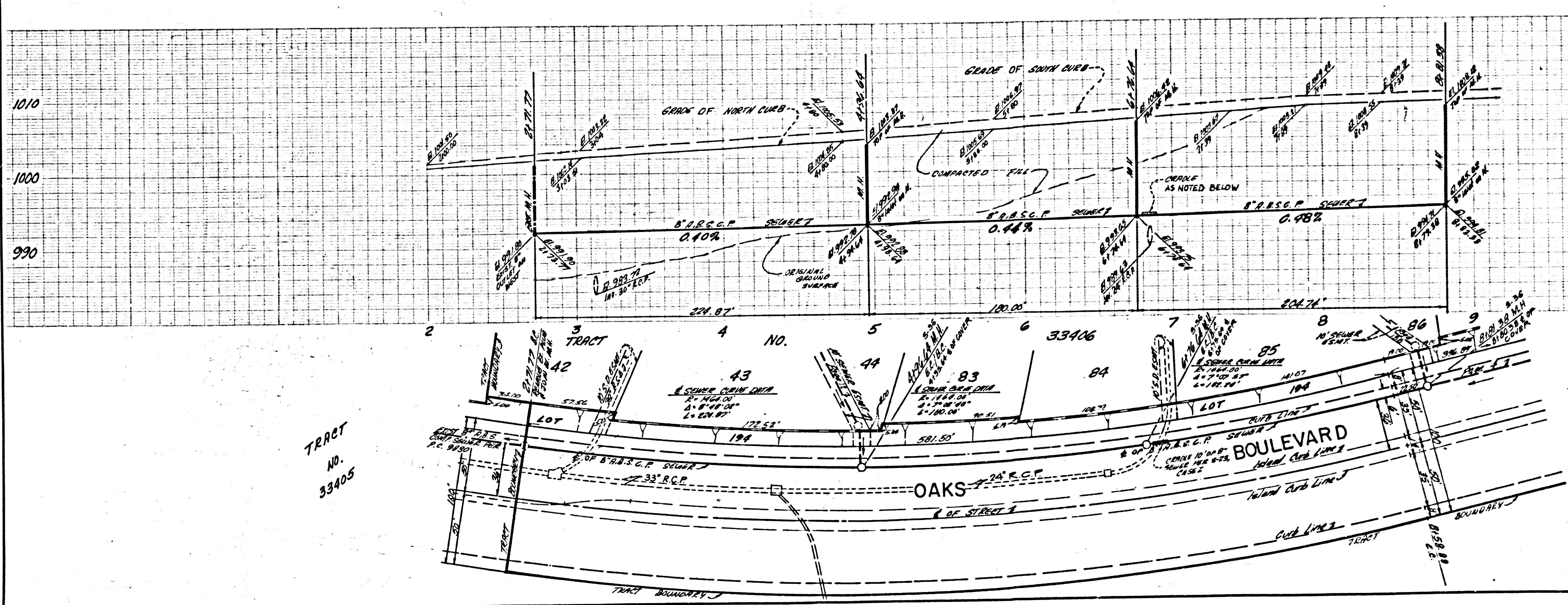
B.M. BY 9007 ELEV. 883.222
 P.O. B.M. 778 IN WEST C.B. 50 FEET NORTH & 40 FEET WEST OF E. INT. OF KANAWA ROAD AND THOUSAND OAKS BLVD.
 QUAD. 19.72

REVISION NO. 1 DATE: 5-25-81
 PAGE 6 1. ELIMINATED M.H.'S AT STA. 1+31.70 & 5+38.75
 2. ADDED M.H.'S AT STA. 3+245.75, 4+00.00 & 5+87.49
 PAGE 22 B 1. ELIMINATED M.H. AT STA. 4+95.70
 2. ADDED M.H. AT STA. 5+19.75

REVISION NO. 2 DATE: 9-29-82
 PAGE 1 REVISED INDEX MAP SHOWING NEW M.H. LOCATION AND PLAN 4B
 PAGE 4B ADDED PLAN AND PROFILE FOR CONNECTION AT STATION 10+68.50 ON THOUSAND OAKS BOULEVARD
 PAGE 21 ADDED MANHOLE AT STATION 10+68.50
 APPROVED: *Robert D. Smith* 10/18/82
 OFFICE OF THE COUNTY ENGINEER

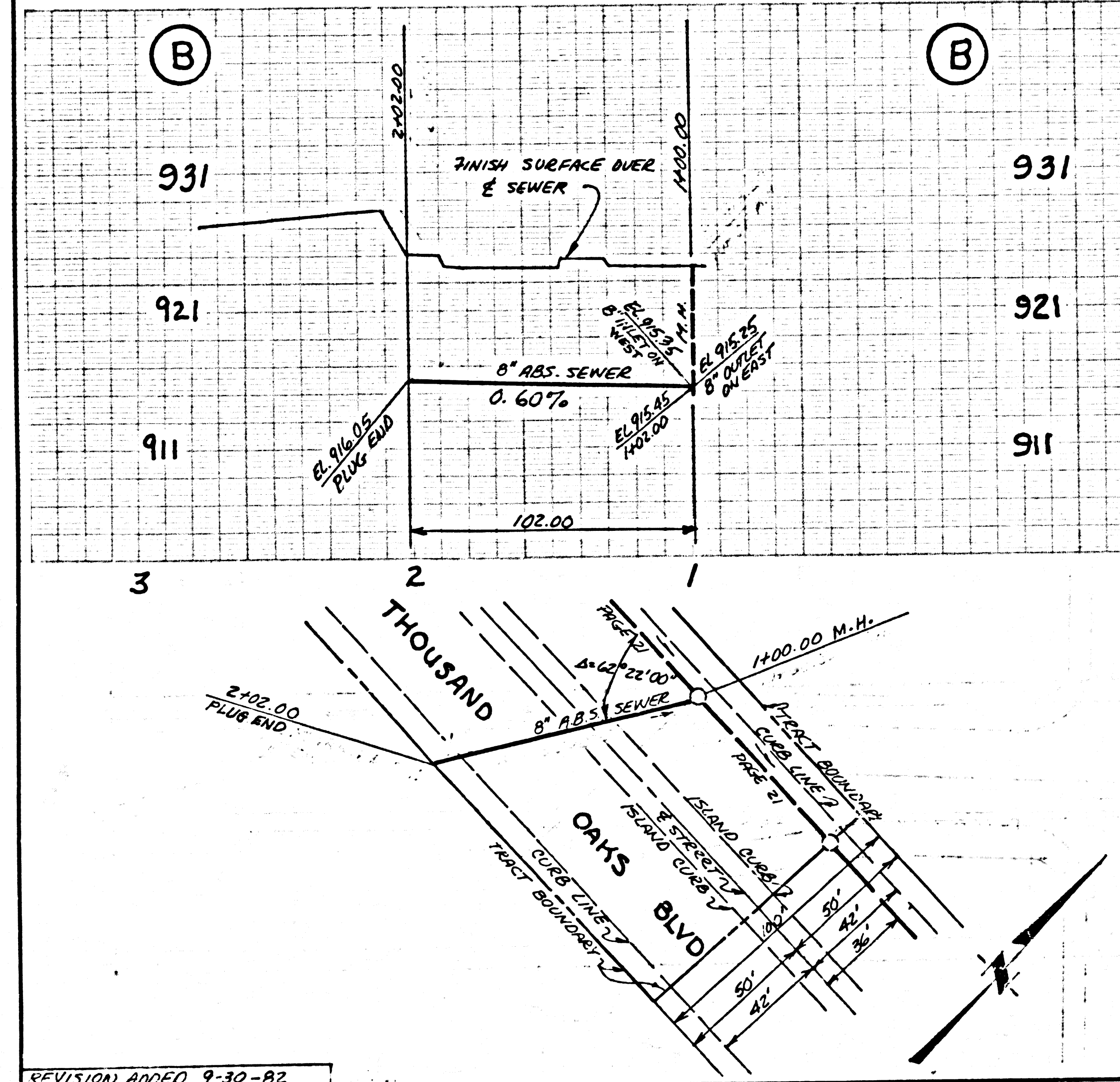
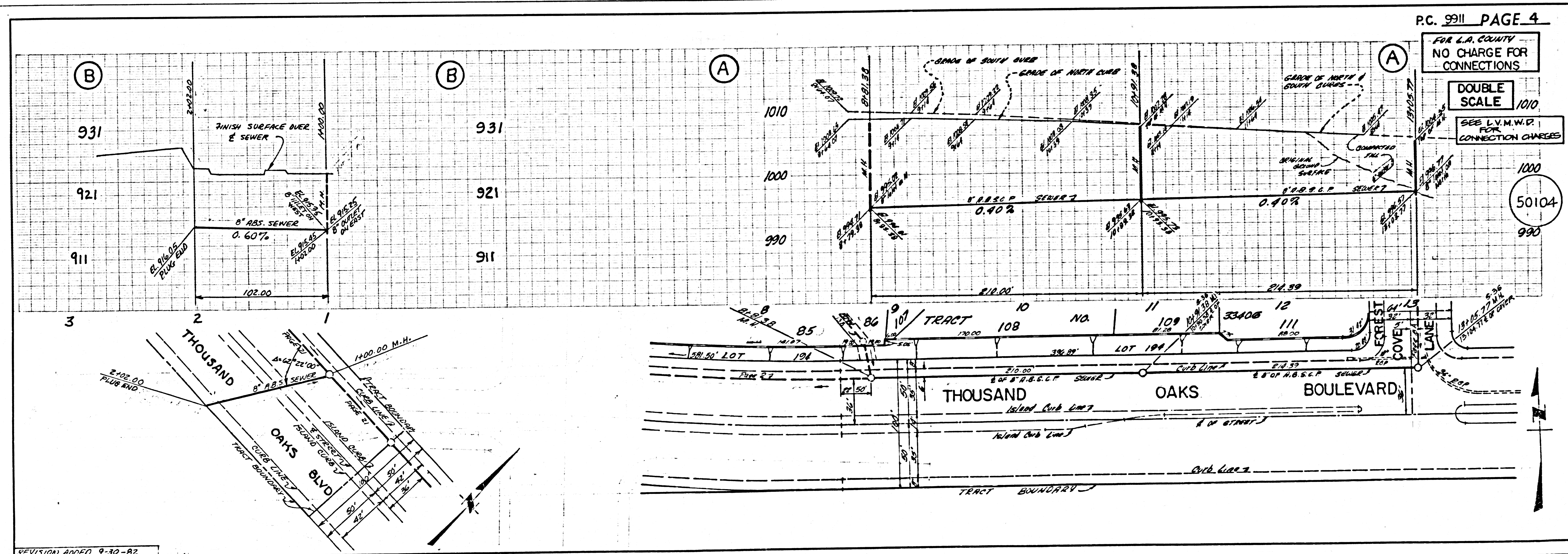
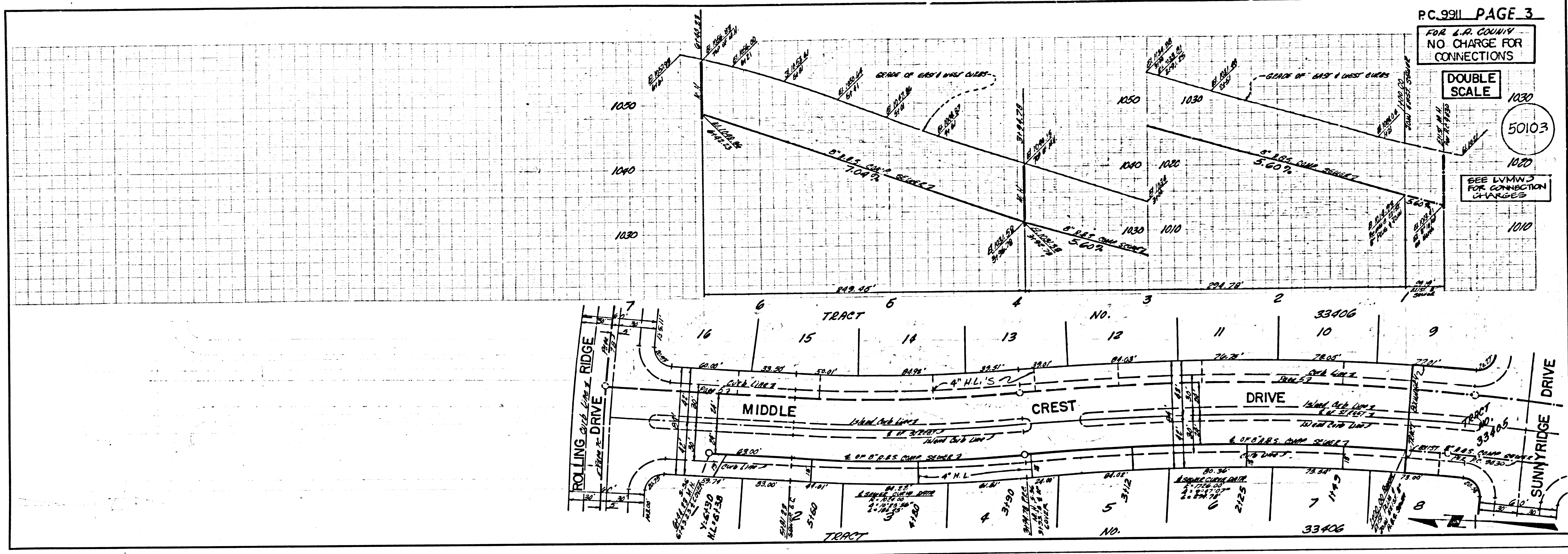


FOR L.A. COUNTY
 NO CHARGE FOR CONNECTIONS
 DOUBLE SCALE 10/10
 SEE L.V.M.W.D. FOR CONNECTION CHARGES
 50102
 990

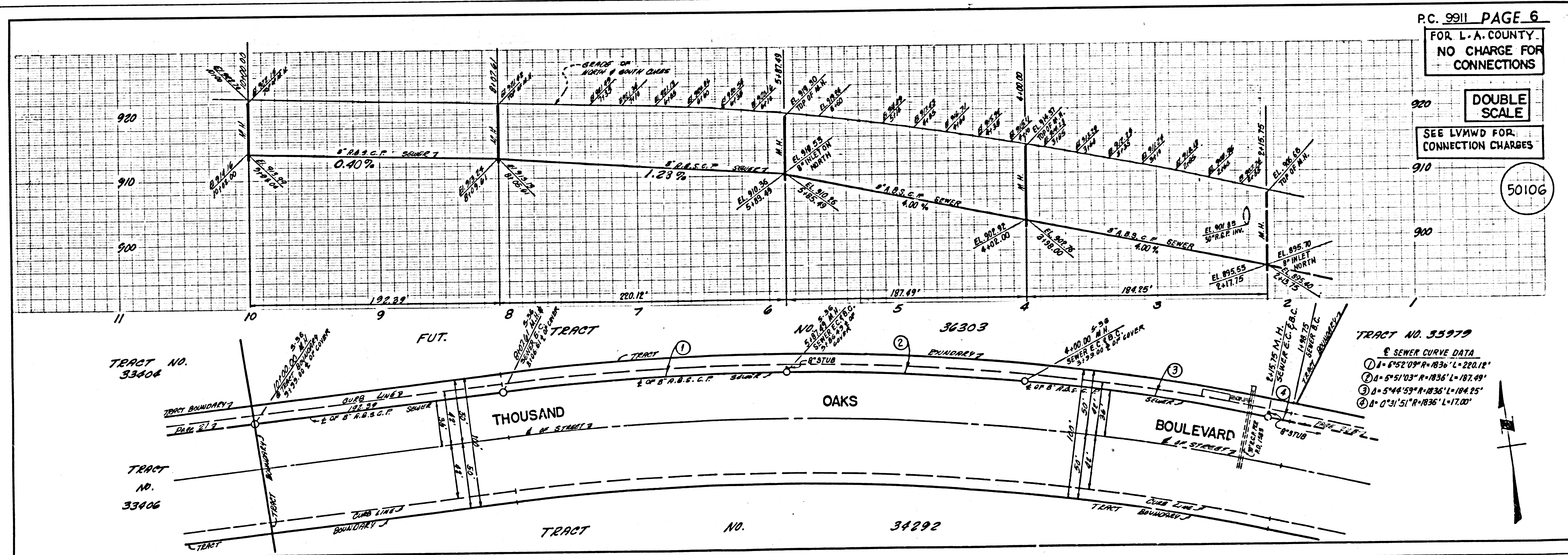
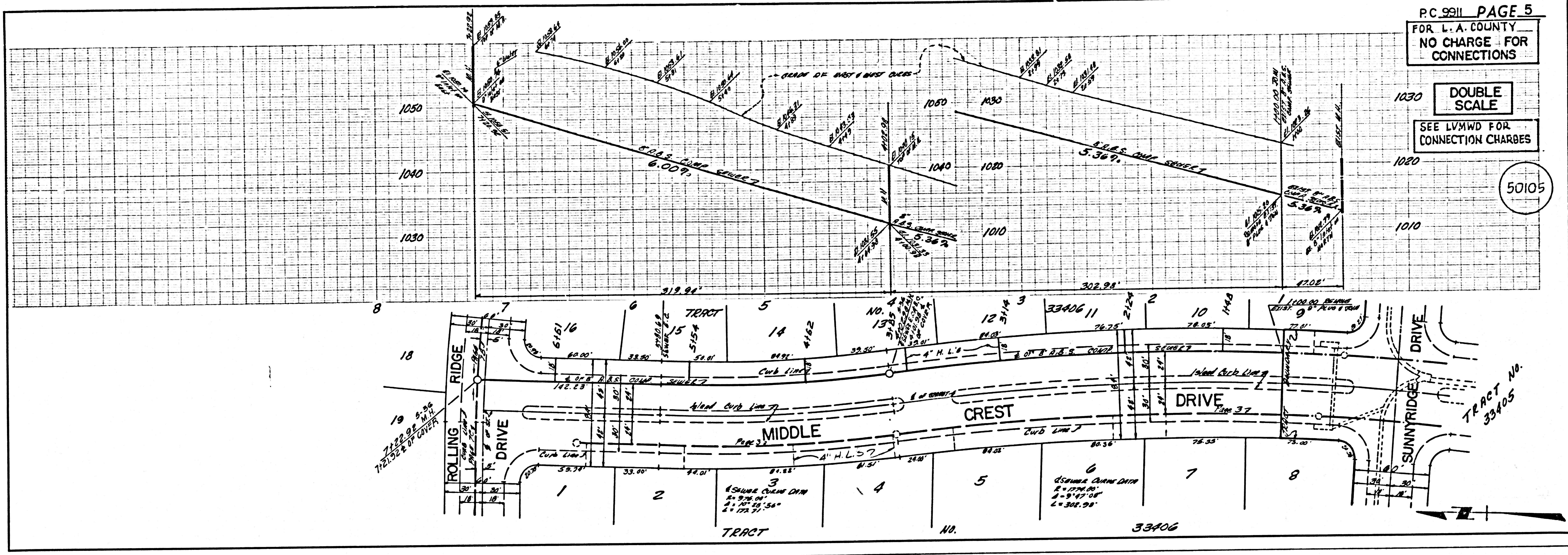


1188 29 20435 ON T3A9T

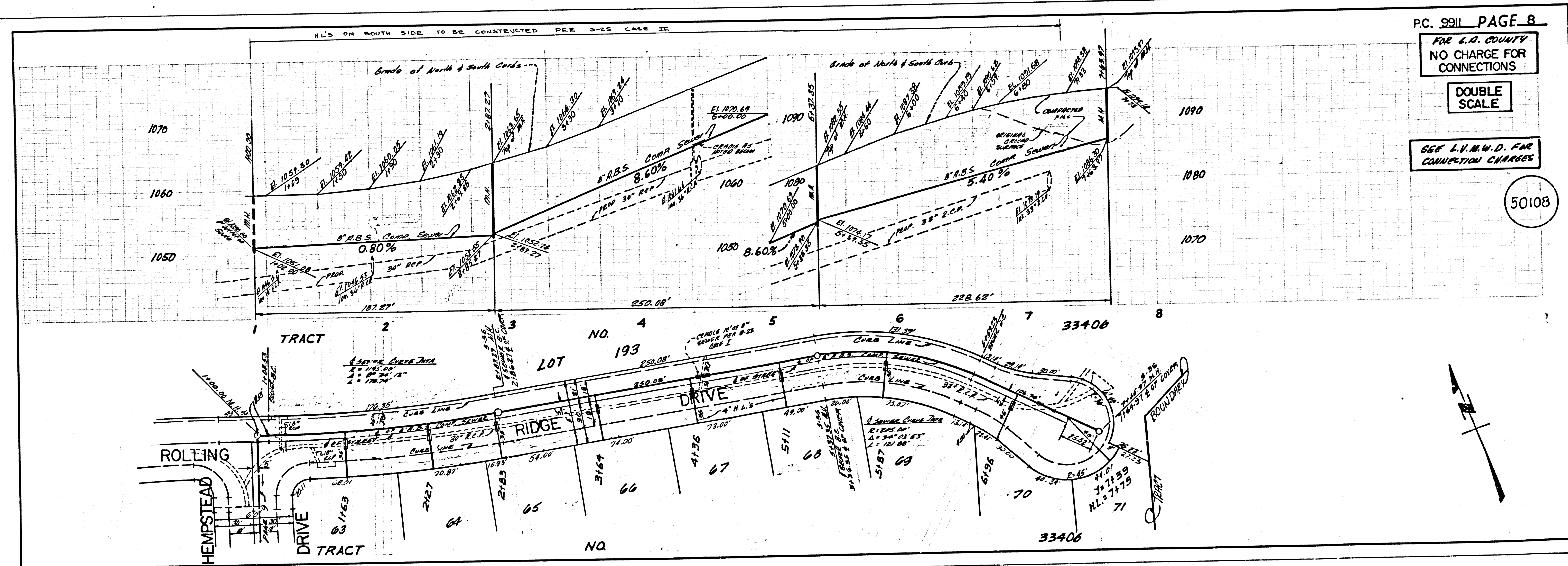
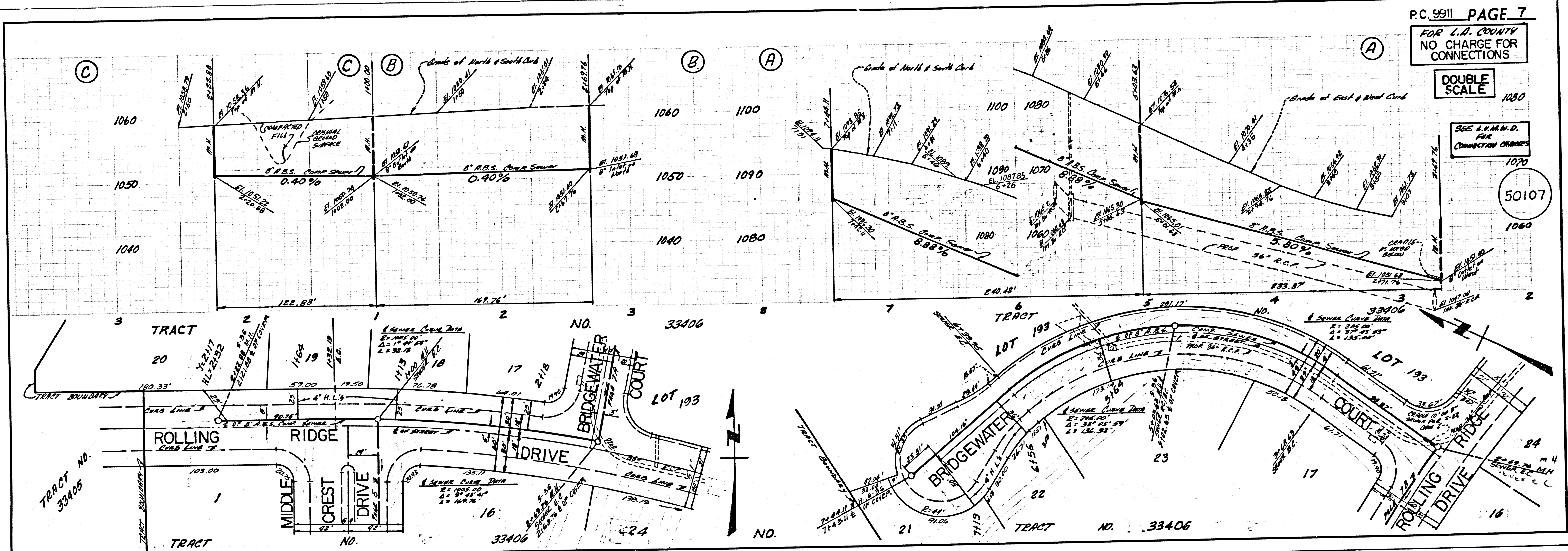
② 1162.29 20425.01 TRACT



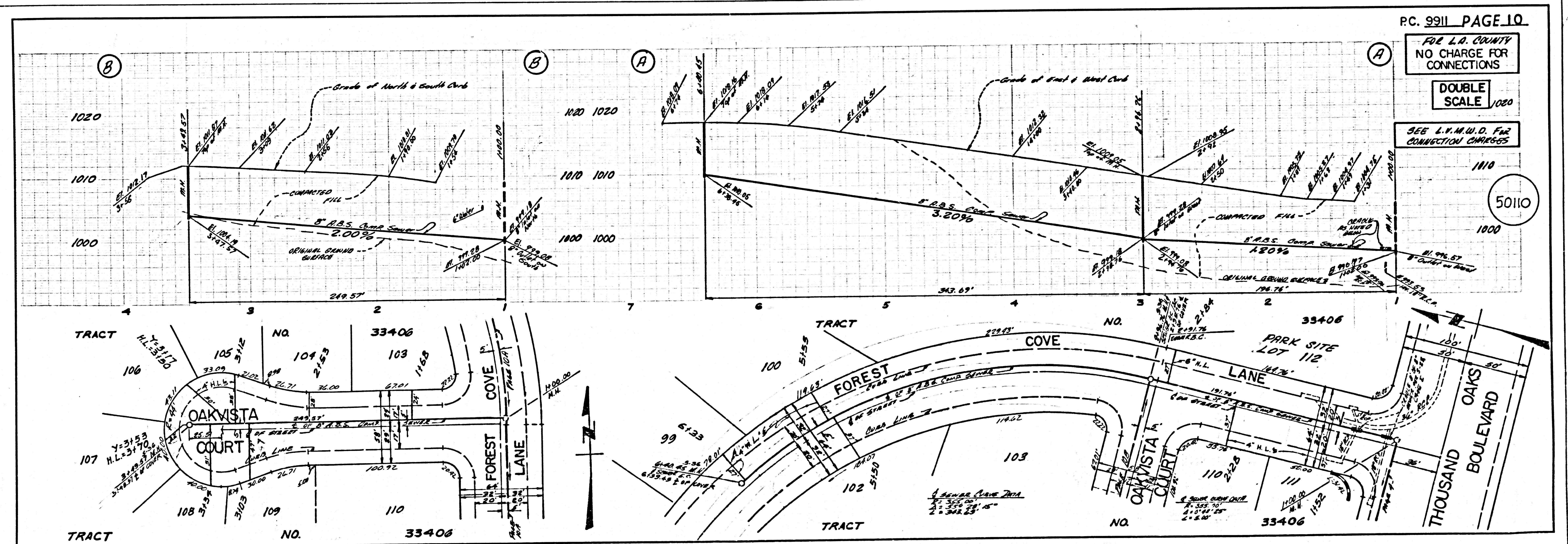
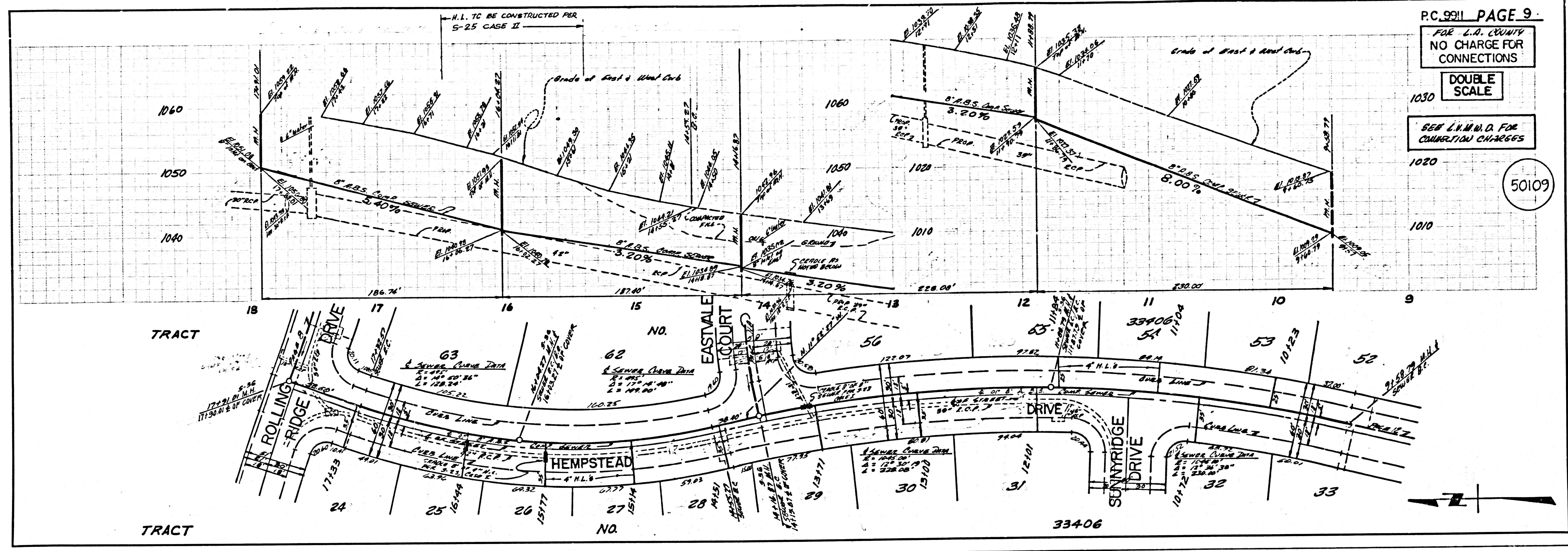
③ 1182 29 20AET ON TRACT

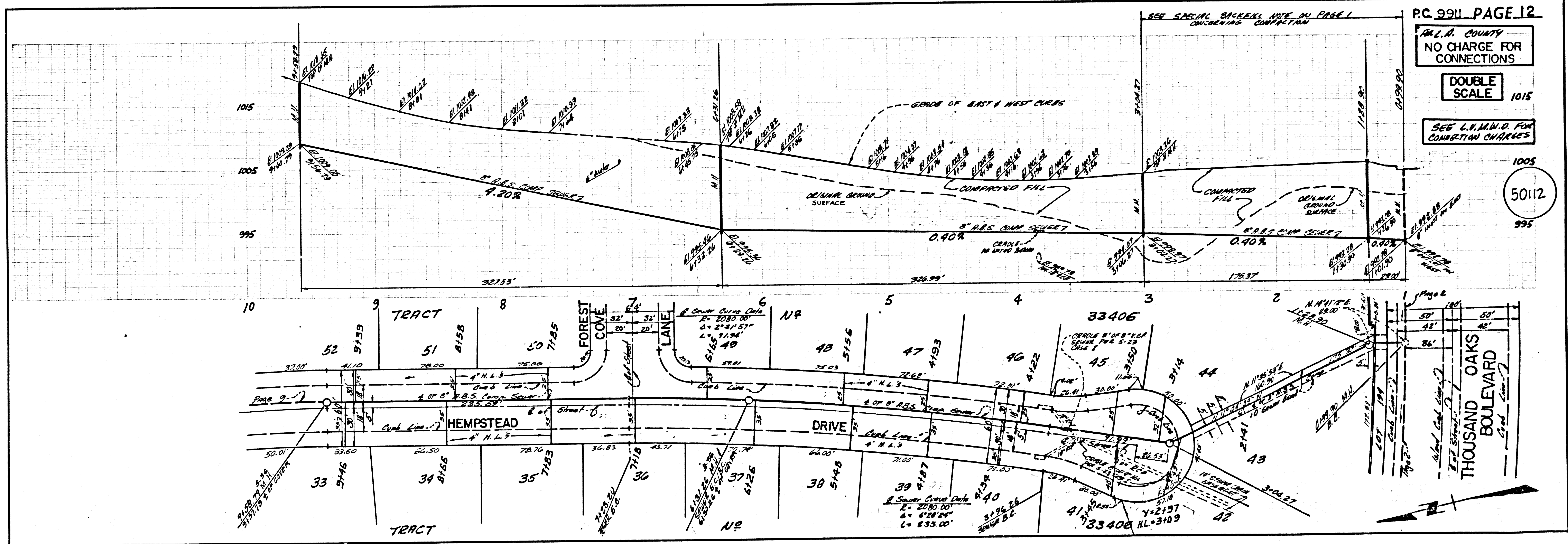
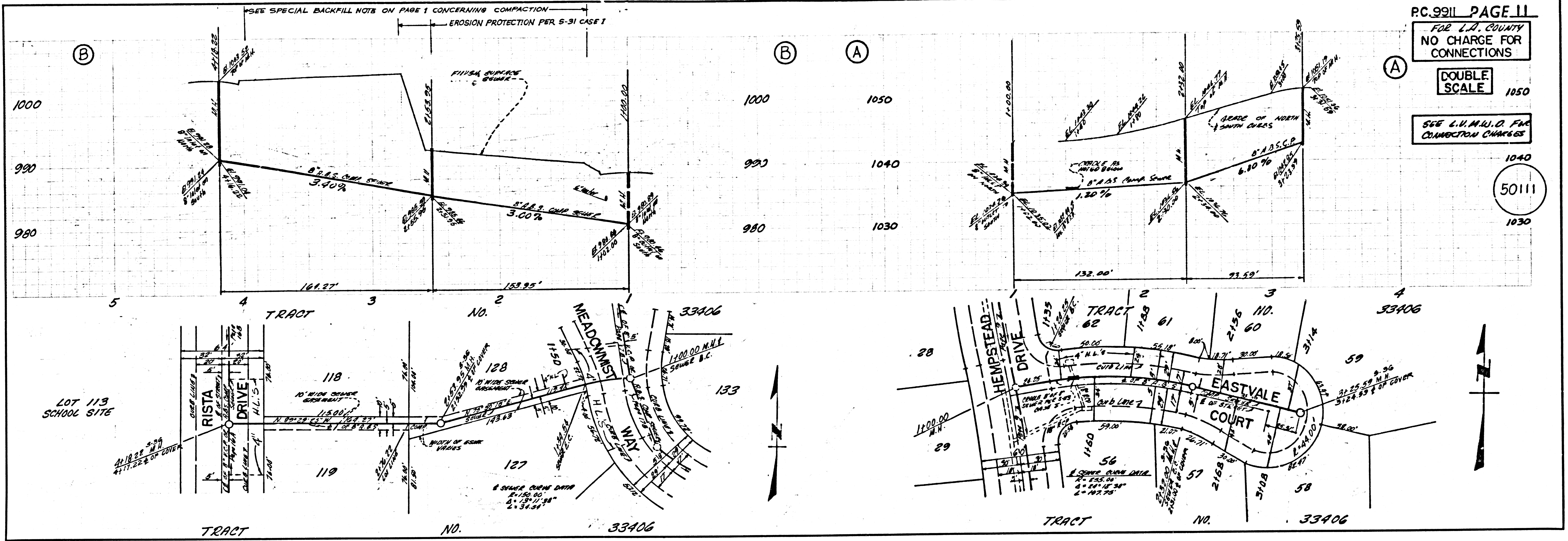


4
SEE 29 PAGES ON TRACT

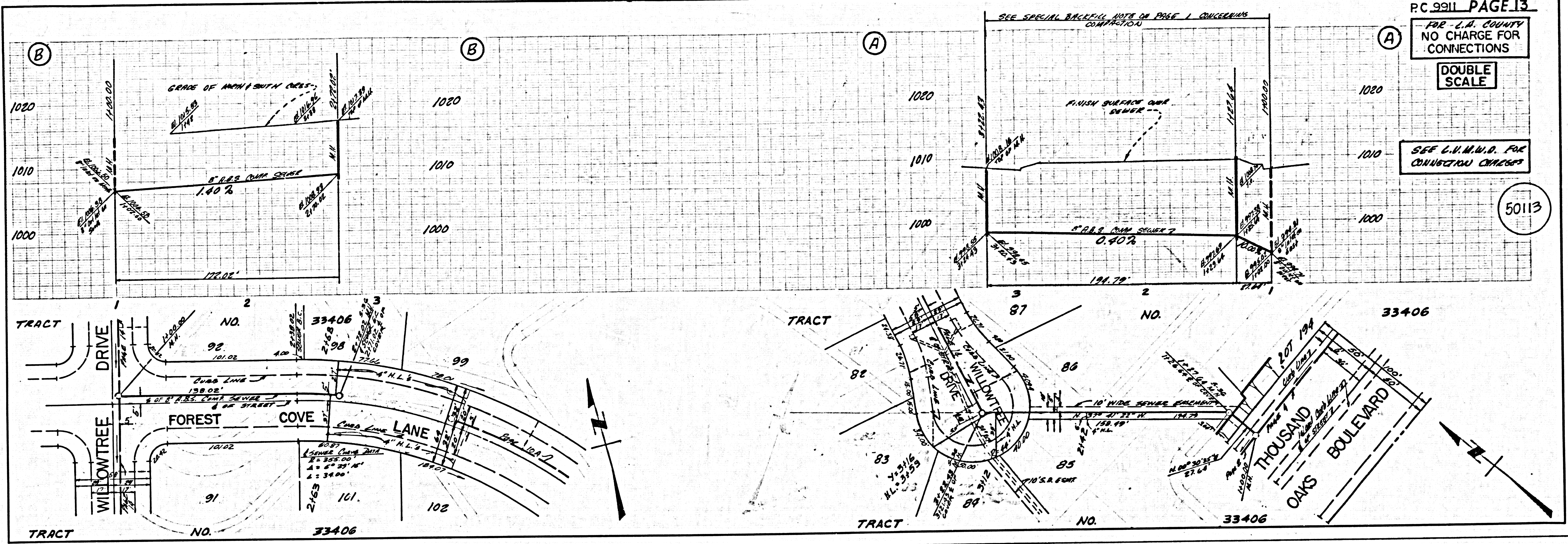


5
1182.39 20435.01 TRACT





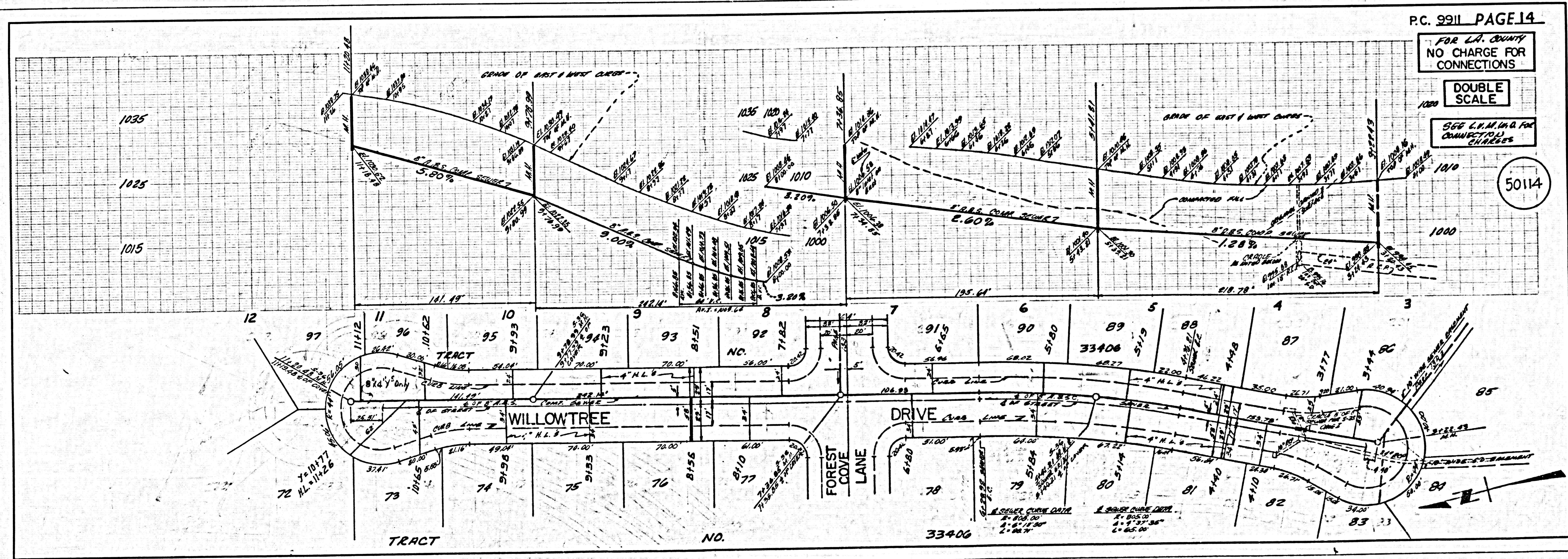
6
1188 29 2085 ON TRACT



P.C. 9911 PAGE 13
 FOR L.A. COUNTY
 NO CHARGE FOR
 CONNECTIONS
 DOUBLE
 SCALE

SEE L.A.M.I.D. FOR CONNECTION CHANGES

50113



P.C. 9911 PAGE 14
 FOR L.A. COUNTY
 NO CHARGE FOR
 CONNECTIONS
 DOUBLE
 SCALE

SEE L.A.M.I.D. FOR CONNECTION CHANGES

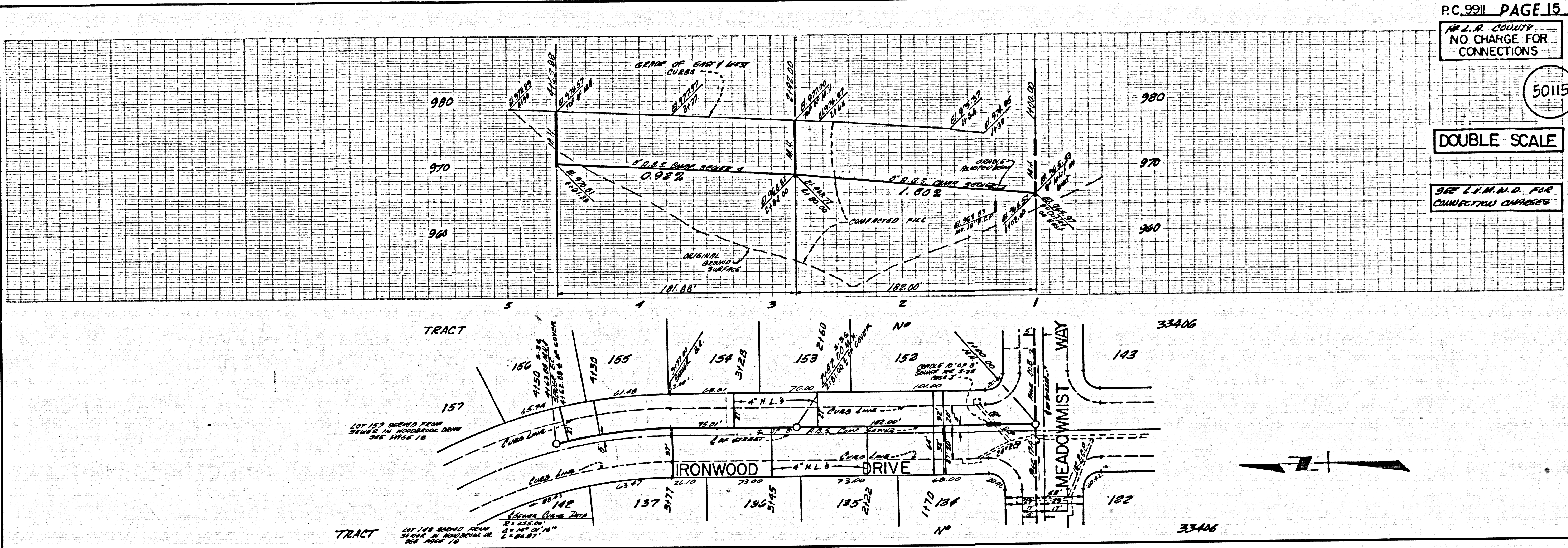
50114

7
1188 29 2045E ON TRACT

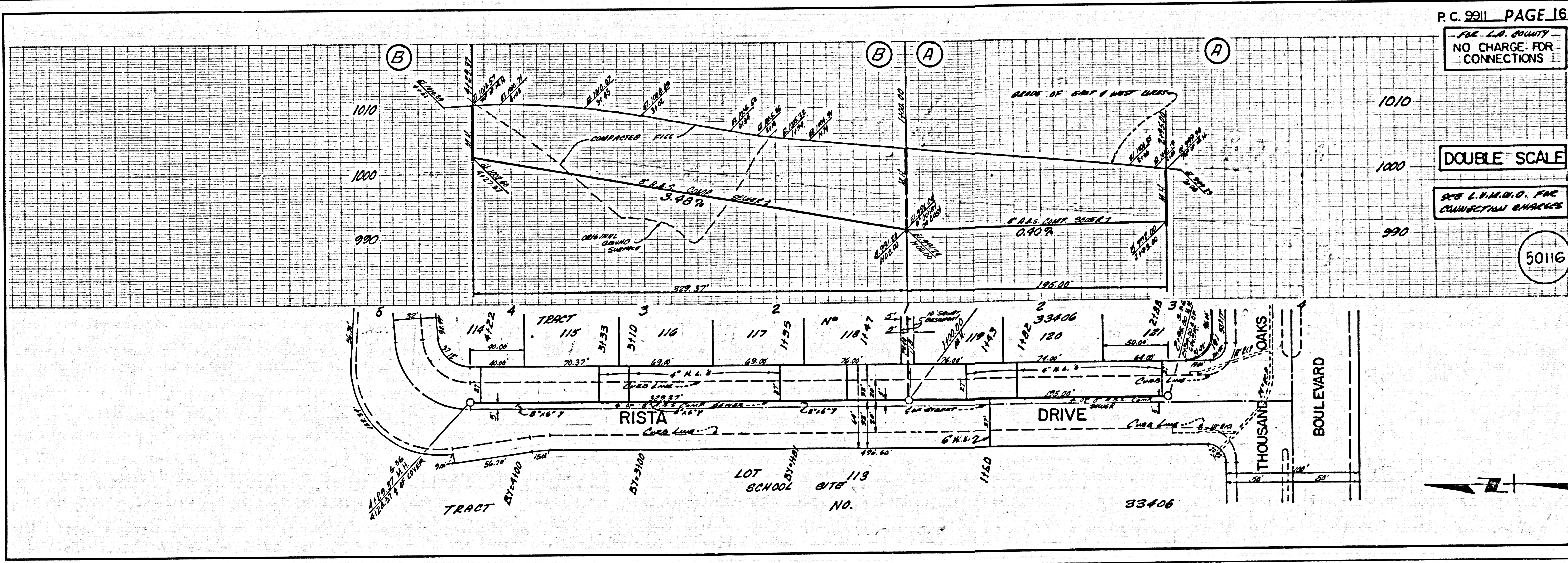
14

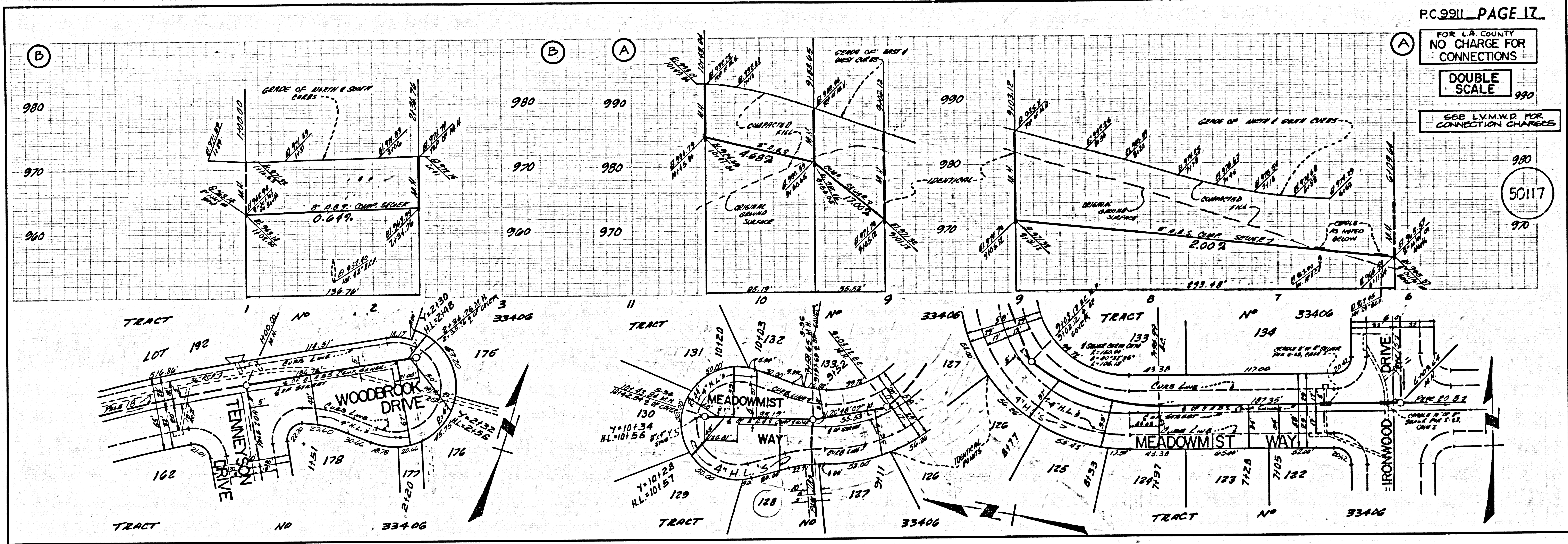
1100 29 20455 ON TRACT

P.C. 9911 PAGE 15
FOR L.A. COUNTY
NO CHARGE FOR
CONNECTIONS
50115
DOUBLE SCALE
SEE L.V.M.D.O. FOR
CONNECTION CHANGES

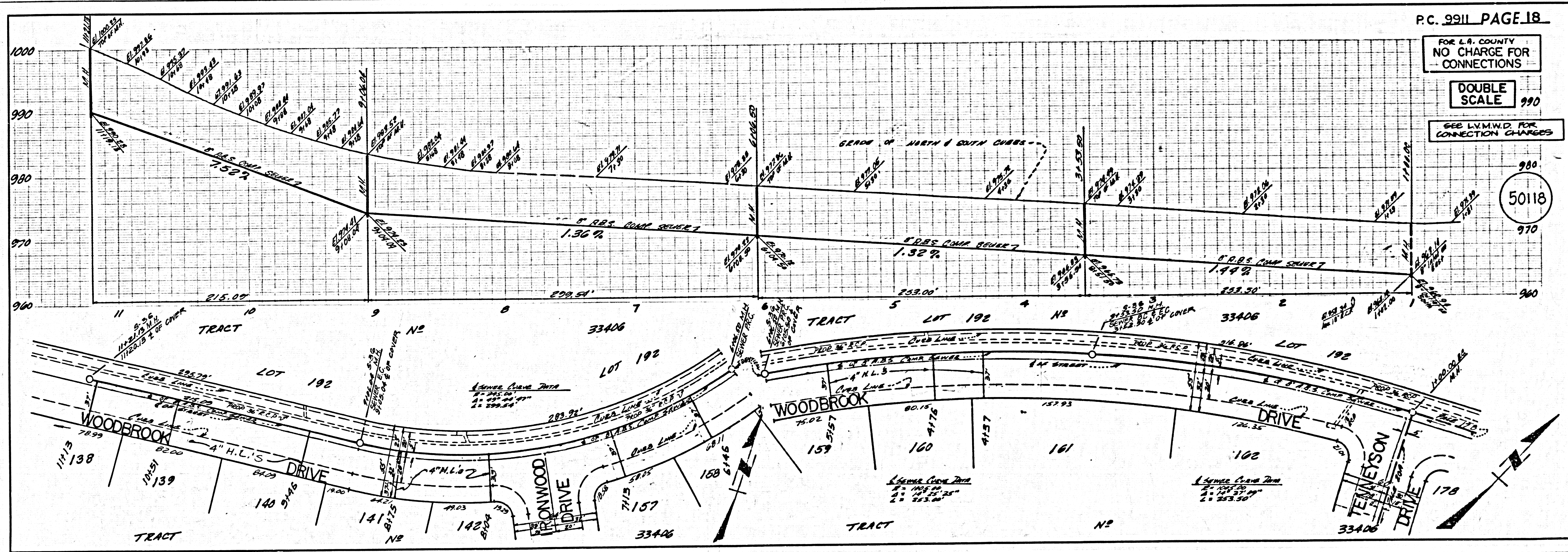


P.C. 9911 PAGE 16
FOR L.A. COUNTY
NO CHARGE FOR
CONNECTIONS
50116
DOUBLE SCALE
SEE L.V.M.D.O. FOR
CONNECTION CHANGES

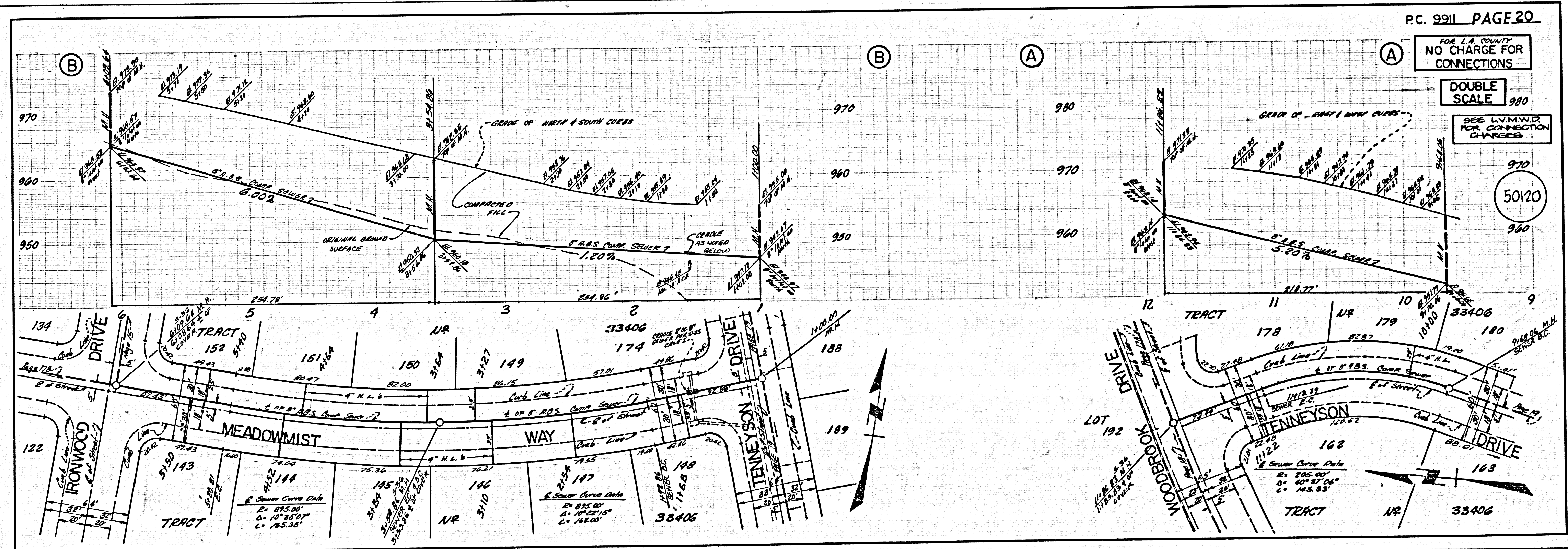
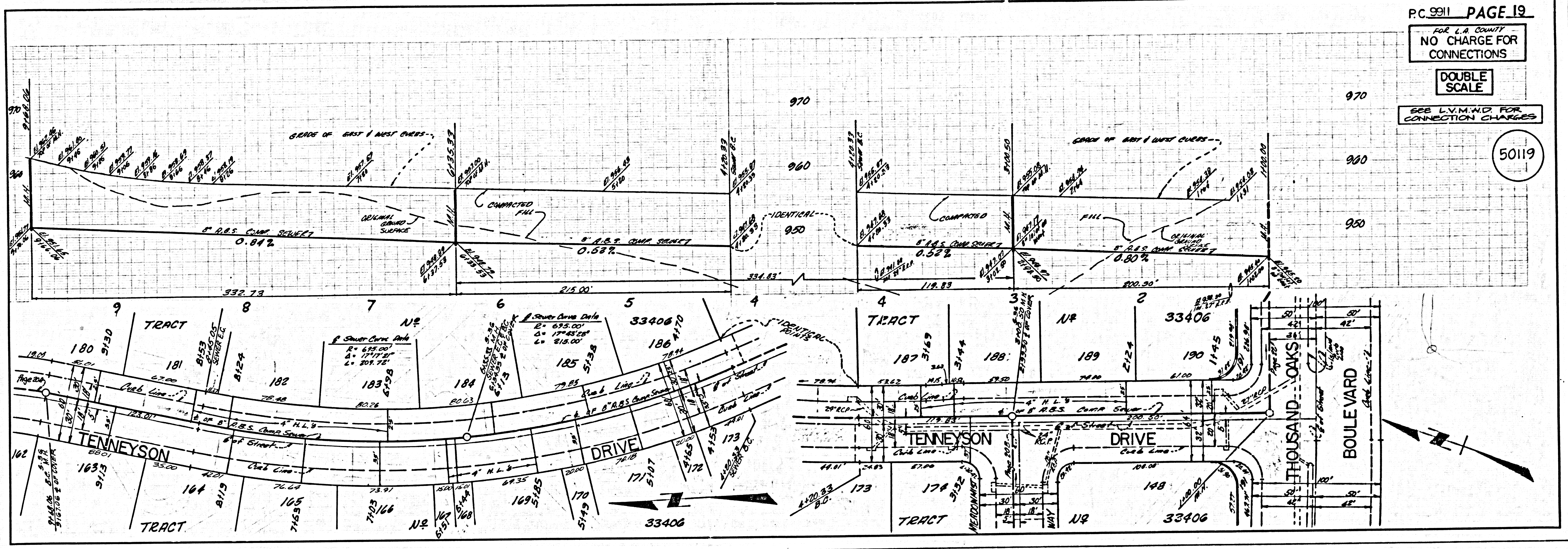


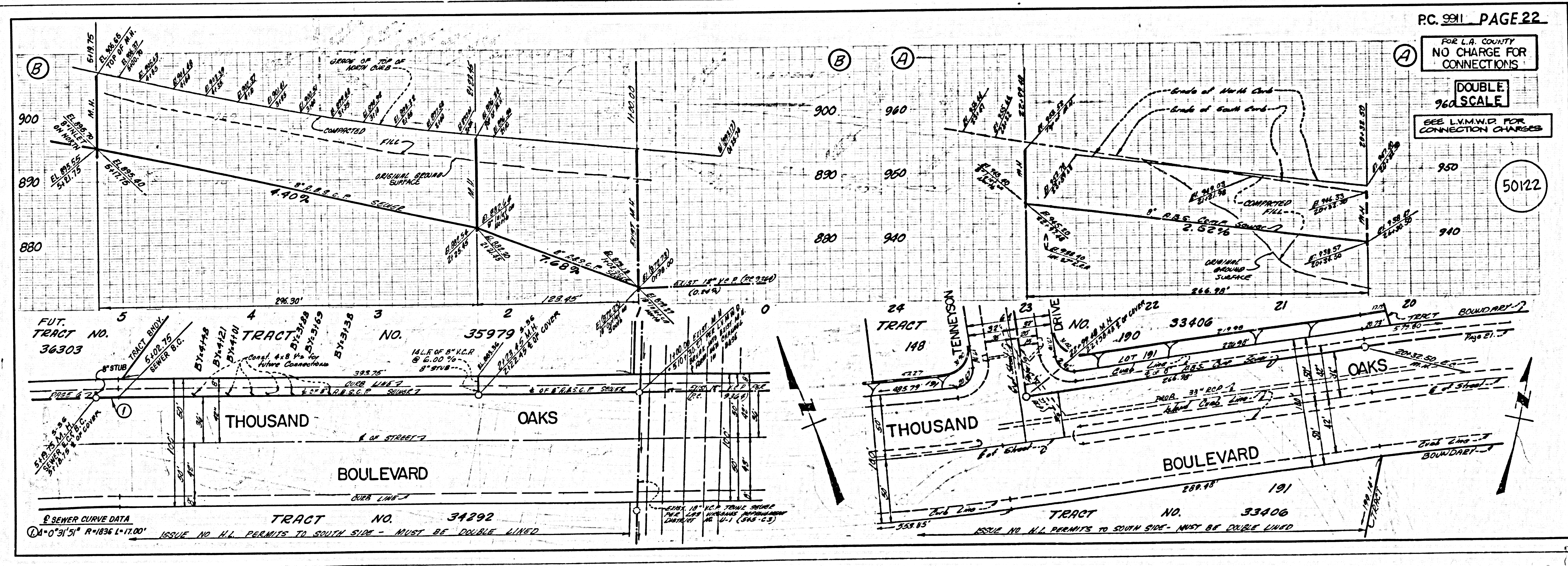
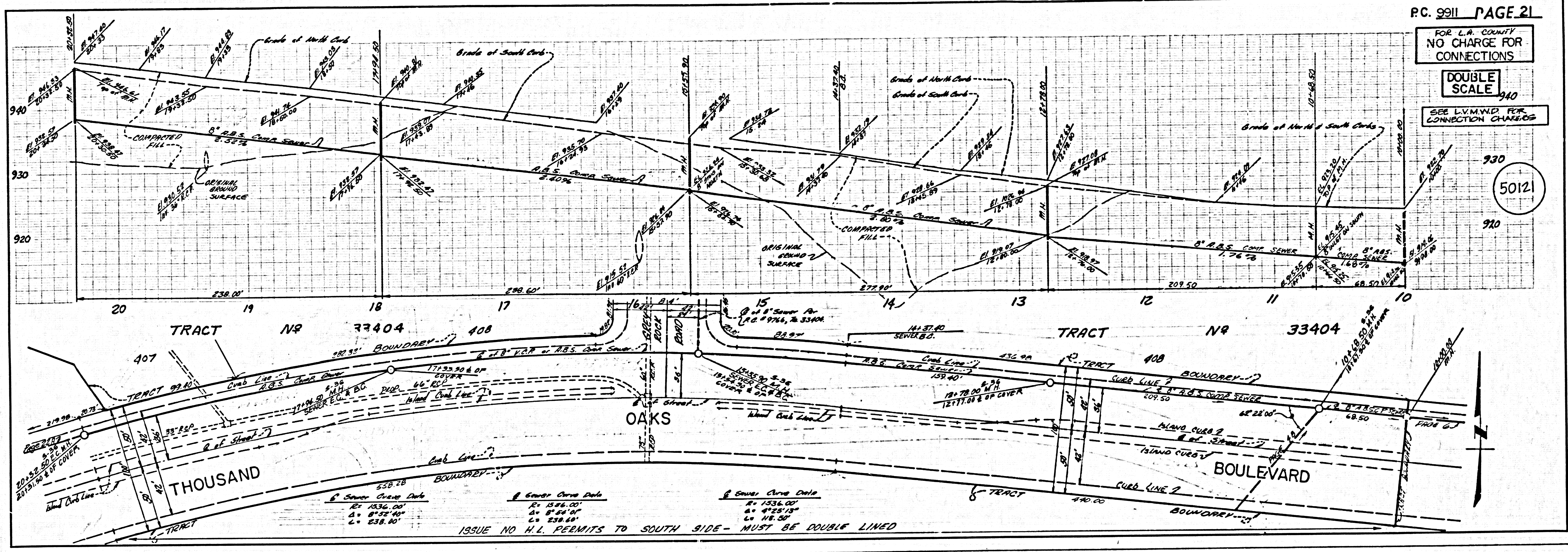


SEE L.V.M.W.D. FOR CONNECTION CHARGES



1182.09 20423 ON TRACT





11
 TRACT NO. 33408

2

10/1/22