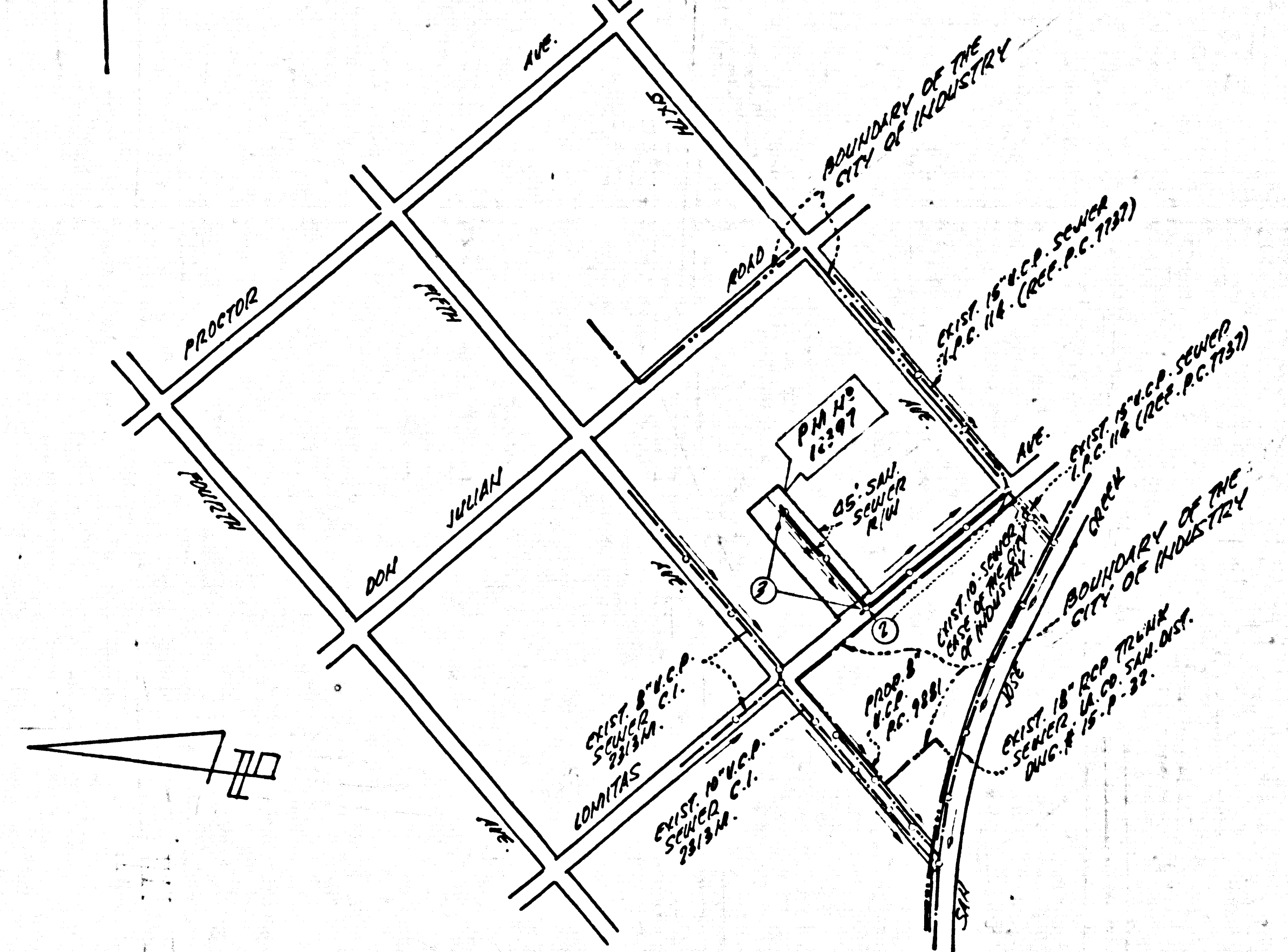


TO BE CONSTRUCTED IN
PARCEL MAP NO 12397
PRIVATE CONTRACT NO. 9916

W.S. 27-63
 2 SHEETS, 3 PAGES
 SCALE: VERT. 1" = 4'
 HORIZ. 1" = 40'
 NOVEMBER 20, 1980
 PREPARED IN THE OFFICES OF:
 COREY WILLIAMS & ASSOC.
 117 E. WASHINGTON ST., ANGELES, CA 90002
 BY: *James E. Lind* 11-20-80
 REG. C. E. No. 30343

49A90

B.M. CG 2273 ELEV. 285.582
 C.S. MARK IN WHEEL IN HOOKS ON RT
 S.E. COR. LOMITAS AVE. & SIXTH AVE.
 10 FT. S. & 10 FT. E. OF INTERSECTION (C.M. 81-2)
 BASELINE QUAD. 1975



INDEX MAP:
 SCALE: 1" = 400'
 P.C. 9916 - PARCEL MAP NO 12397

NOTICE TO CONTRACTOR:
 THE UTILITY LINES SHOWN ON THESE PLANS ARE APPROXIMATE
 ONLY AND ARE BASED UPON AVAILABLE RECORDS. THE CONTRACTOR
 IS RESPONSIBLE TO TRACE AND VERIFY THE LOCATION AND DEPTH
 OF ALL UTILITY LINES SHOWN ON THESE PLANS.
 NOT TO RECORD OR NOT SHOWN ON THESE PLANS.

- GENERAL NOTES:**
- ELEVATIONS ARE IN FEET ABOVE U.S.C. & G.S. SEA LEVEL DATUM OF 1929.
 - NO REVISIONS SHALL BE MADE IN THESE PLANS WITHOUT THE APPROVAL OF THE COUNTY ENGINEER.
 - NO REPRESENTATIVE OF THE COUNTY ENGINEER WILL BE ON SITE TO CHECK ANY PORTION OF THE WORK.
 - GRADES TO WHICH THIS IMPROVEMENT IS TO BE CONSTRUCTED ARE SHOWN ON PLANS AND PROFILES AT ALL POINTS BETWEEN DESIGNATED POINTS. CENTER LINE OF STREETS, OR CENTER LINE OF ALLEYS ARE SHOWN ON PROFILES AT ALL POINTS BETWEEN DESIGNATED POINTS. THE GRADE SHALL BE ESTABLISHED SO AS TO CONFORM TO A STRAIGHT LINE BETWEEN SAID DESIGNATED POINTS.
 - THE PRIVATE ENGINEER SHALL FURNISH THE COUNTY ENGINEER WITH GRADE SHEETS AND STATIONING FOR ALL HOUSE LATERALS AND "T" OR "Y" BRANCHES AND SHALL PROVIDE STAKES FOR THESE AT THEIR PROPER LOCATIONS WITH STATIONING PLAINLY MARKED. ALL HOUSE LATERALS SHALL BE CONSTRUCTED IN A STRAIGHT ALIGNMENT AT RIGHT ANGLES FROM THE MAIN LINE SEWER EXCEPT AS SHOWN ON THE PLANS. HOUSE LATERALS FROM CHIMNEYS SHALL NOT HAVE AN ANGLE OF LESS THAN 45° WITH THE MAIN LINE SEWER. ANY CHANGES IN ALIGNMENT SHALL BE REQUESTED IN WRITING BY THE PRIVATE ENGINEER.
 - THE PRIVATE ENGINEER SHALL FURNISH THE HOUSE LATERAL DEPTH AT THE PROPERTY LINE BELOW THE TOP OF CURB ELEVATION FOR EACH HOUSE LATERAL ON THE GRADE SHEET.
 - BEFORE WORK CAN BE STARTED, THE CONTRACTOR MUST OBTAIN A PERMIT TO EXCAVATE IN COUNTY STREETS FROM THE L.A. COUNTY ROAD DEPT., DISTRICT OFFICE NO. 1, AND PAY A FEE TO THE COUNTY ENGINEER, 200 S. MAIN AVE., 5TH FLOOR, REGIONAL OFFICE, TO COVER THE COST OF CONSTRUCTION INSPECTION AND RECORD PLANS.
 - IF WORK IS TO BE DONE IN A STATE HIGHWAY, A PERMIT MUST BE OBTAINED FROM THE STATE OF CALIFORNIA, DIVISION OF HIGHWAYS, 120 SOUTH SPRING STREET, LOS ANGELES, CALIFORNIA.
 - APPROVAL OF THIS PLAN BY THE COUNTY OF LOS ANGELES DOES NOT CONSTITUTE A REPRESENTATION AS TO THE ACCURACY OF THE LOCATION OF OR THE EXISTENCE OR NON-EXISTENCE OF ANY UNDERGROUND UTILITY PIPE, OR STRUCTURE WITHIN THE LIMITS OF THE PROJECT. THIS NOTE APPLIES TO ALL PAGES.
 - REFER TO SECTION 7-10.1.1 OF THE STANDARD SPECIFICATIONS, REGARDING SAFETY ORDERS.
 - PROVIDE AN ESTIMATE OF THE APPROVED SEWER CONSTRUCTION REQUIRED BY THE COUNTY ENGINEER. THE CONTRACTOR SHALL OBTAIN A PERMIT TO EXCAVATE FROM THE STATE OF CALIFORNIA, DEPARTMENT OF INDUSTRIAL RELATIONS, DIVISION OF INDUSTRIAL SAFETY AND SHALL FURNISH A CERTIFICATE OF ADEQUATE CONSTRUCTION INSURANCE WHILE THE COUNTY ENGINEER MAINTAINS HIS CERTIFICATE HOLDER TO BE ISSUED 30 DAYS PRIOR TO COMMUNICATION OF PERMIT.

- CONSTRUCTION NOTES:**
- WORK SHALL BE CONSTRUCTED ACCORDING TO THE STANDARD SPECIFICATIONS FOR PUBLIC WORKS CONSTRUCTION (1977 EDITION) WITH THE SUPPLEMENTARY AND COUNTY ENGINEER SPECIAL PROVISIONS FOR THE CONSTRUCTION OF SANITARY SEWERS DATED SEPTEMBER 25, 1974, AND SHALL BE PROSECUTED ONLY IN THE PRESENCE OF THE COUNTY ENGINEER.
 - THE CONTRACTOR SHALL NOTIFY THE ENVIRONMENTAL DEVELOPMENT DIVISION BY TELEPHONE (213) 229-2100 AT LEAST 72 HOURS PRIOR TO ANY EXCAVATION. ANY WORK SHALL BE STOPPED IMMEDIATELY UPON THE RECEIPT OF A STOP WORK ORDER FROM THE ENVIRONMENTAL DEVELOPMENT DIVISION. THE CONTRACTOR SHALL BE RESPONSIBLE FOR OBTAINING ALL NECESSARY PERMITS FROM THE ENVIRONMENTAL DEVELOPMENT DIVISION.
 - WYE OR TE BRANCHES MAY BE USED FOR CONNECTIONS TO MAINLINE SEWERS EXCEPT AS NOTED.
 - ALL STRUCTURES SHALL BE EITHER BRICK MANHOLE PER 5-36 OR PRECAST CONCRETE MANHOLES PER 5-36, EXCEPT AS NOTED.
 - PROVIDE STAKES ON THE PROPERTY LINE OR PROPERTY LINES PRODUCED AT RIGHT ANGLES TO THE SEWER LINE AT THE CENTER LINE OF EACH MANHOLE.
 - MANHOLE TOPS IN UNIMPROVED RIGHTS OF WAY TO BE SIX INCHES ABOVE FINISHED GRADE.
 - VITRIFIED CLAY PIPE JOINTS SHALL BE TYPE "B", OR "C" PER STANDARD SPECIFICATIONS SECTION 306-2.
 - IF A POWER POLE IS WITHIN THREE FEET OF THE SEWER, THE SEWER SHALL BE ENCASED, PER 5-33, CASE II, TWO FEET ON EACH SIDE FROM THE POINT OF INTERFERENCE.
 - IF DURING THE COURSE OF CONSTRUCTION IT IS DETERMINED THAT THERE IS LESS THAN FOUR FEET OF COVER OVER THE TOP OF A MAIN LINE OR HOUSE LATERAL V.C.P. SEWER WHICH IS NOT INDICATED ON THE PLANS, THE PIPE SHALL BE ENCASED PER 5-33, CASE II UNLESS OTHERWISE APPROVED BY THE COUNTY ENGINEER.
 - ALL JOINTS BETWEEN CLAY PIPE AND VITRIFIED CLAY PIPE SHALL BE MADE WITH A RUBBER SEVEY JOINT, TYPE "C" OR "D", (WITH BUSHING IF NECESSARY) PER STANDARD SPECIFICATIONS, SECTION 306-2.
 - SEWERS TO BE TESTED FOR LEAKAGE PER SECTION 306-4 OF THE STANDARD SPECIFICATIONS AND SPECIAL PROVISIONS.
 - RESURFACE ALL THROTTLES WITHIN PAVED AREAS TO MEET L.A. COUNTY ROAD DEPT. OF CALIFORNIA STATE HIGHWAY REQUIREMENTS IN ACCORDANCE WITH PERMITS.
 - FULL COMPLIANCE WITH SECTION 306-3.1 OF THE SPECIAL PROVISIONS WILL BE REQUIRED FOR BACKFILL IN STREETS. CERTIFICATION OF BACKFILL COMPACTION AND SAND EQUIVALENTS BY A QUALIFIED, REGISTERED TESTING LABORATORY SHALL BE PROVIDED BY THE CONTRACTOR PRIOR TO THE ISSUANCE OF A CERTIFICATE OF PARTIAL ACCEPTANCE.
 - SPECIAL BACKFILL IN DESIGNATED AREAS: (A) BACKFILL SPECIFIC TO THE PROJECT SHALL BE REQUIRED TO AVOID THE USE OF SAND EQUIVALENTS. (B) BACKFILL SPECIFIC TO THE PROJECT SHALL BE REQUIRED TO AVOID THE USE OF SAND EQUIVALENTS. THIS BACKFILL SHALL BE APPROVED BY THE BUILDING AND SAFETY DIVISION.

THE FOLLOWING LATEST REVISED STANDARD PLANS ON FILE IN THE OFFICE OF THE COUNTY ENGINEER SHALL APPLY IN THE CONSTRUCTION OF THIS PROJECT.

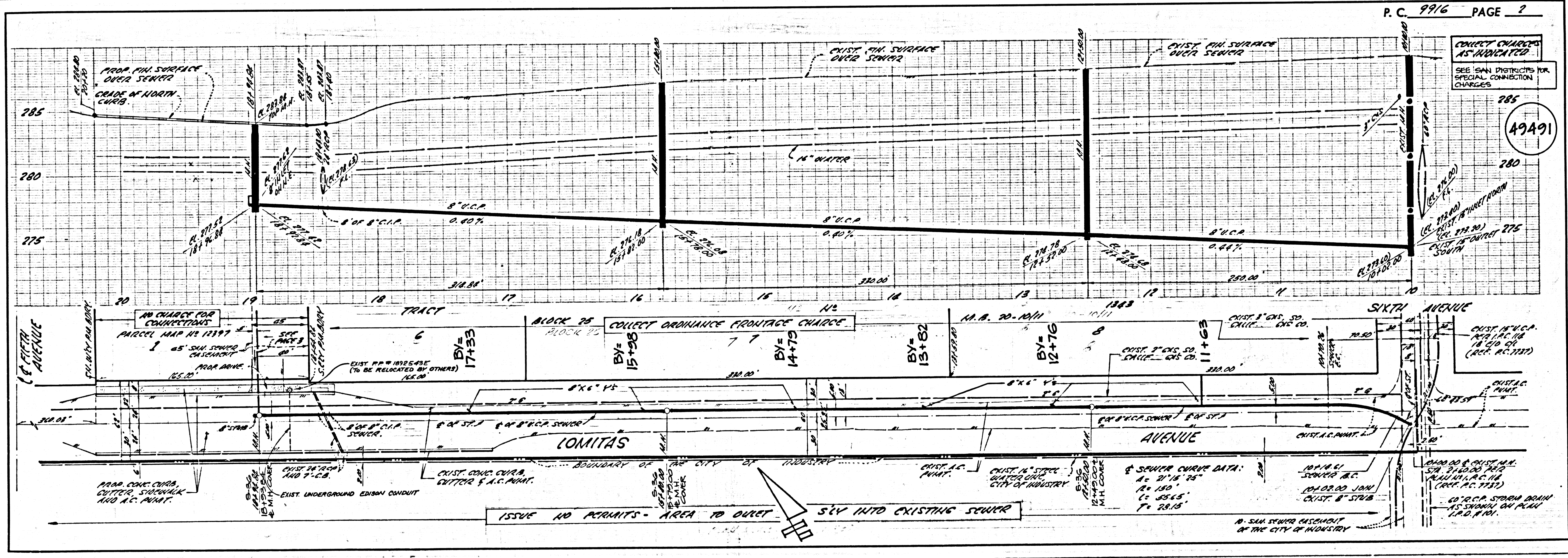
LEGEND	SECTION
MINIMUM PUBLIC SAFETY REQUIREMENTS	5-3
BRICK MANHOLE	5-36
STANDARD MANHOLE STEP	5-37
BRIDGING FOR SEWER PIPE	5-38
CRADLING AND ENCASEMENT	5-39
WYE OR TE SUPPORT	5-39
ALLOWABLE TRENCH WIDTHS	5-39
LOCKING MANHOLE FRAME AND COVER	5-39
NON-REINFORCED PRECAST CONCRETE MANHOLE	5-39

NO CONNECTION FOR THE DISPOSAL OF INDUSTRIAL WASTES SHALL BE MADE TO SEWERS SHOWN ON THESE DRAWINGS UNTIL A PERMIT FOR INDUSTRIAL WASTEWATER DISCHARGE HAS BEEN ISSUED BY THE SANITATION DISTRICTS FOR SAID CONNECTION.

BEFORE BREAKING INTO OR CONSTRUCTION ON A COUNTY SANITATION DISTRICT SEWER AND PRIOR TO FINAL ACCEPTANCE OF THE PROJECT, SANITATION DISTRICT INSPECTOR SHALL BE NOTIFIED BY PHONE - 962-8605, 638-1161 SO THAT REQUIRED INSPECTION CAN BE MADE.

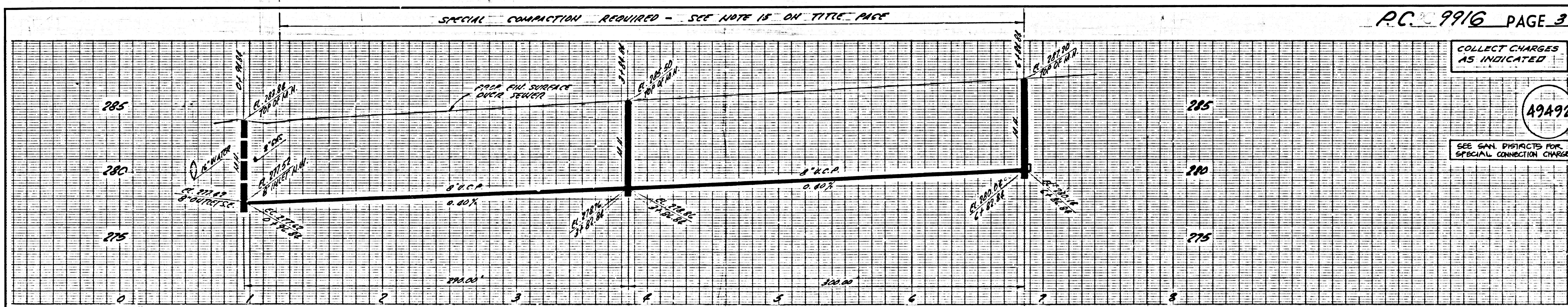
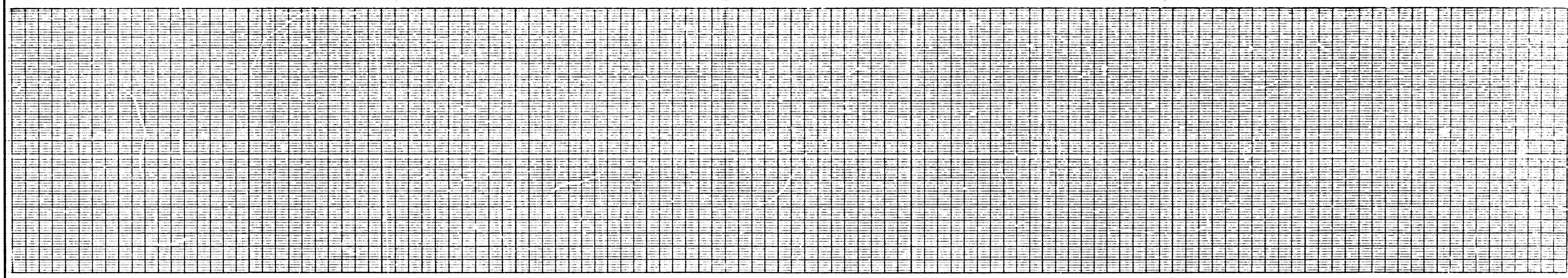
CONSTRUCTION NOTES CONT.:
 (A) ALL BRICKS AND CHIMNEY ROOFINGS SHALL BE CONFORMED TO A MINIMUM OF 20% OF ANGLE OF DENSITY PER S.E.M. STANDARD METHOD OF TESTING PER 7-1 AS APPROVED. ACCORDING TO SECTION 7-10.1.1 OF THE STANDARD SPECIFICATIONS SHALL BE SUBMITTED TO THE ENVIRONMENTAL DEVELOPMENT DIVISION.

COUNTY OF LOS ANGELES, CALIFORNIA
 STEPHEN J. KANAR, COUNTY ENGINEER
 APPROVED: *John Miller* 3/20/81
 REGIONAL ENGINEER (DATED)
 CHECKED: *Ralph D. J. Jant* 3/20/81
 REG. C.E. NO. 16883
 DATE: 3/20/81
 APPROVED: *Paul J. Jant* 4/2/81
 CHIEF ENGINEER (DATED)
 OFFICE ENGINEER
 CITY OF INDUSTRY
 APPROVED FOR CONNECTION ONLY:
John J. Jant 4/2/81
 CITY ENGINEER (DATED)



P.C. 9916

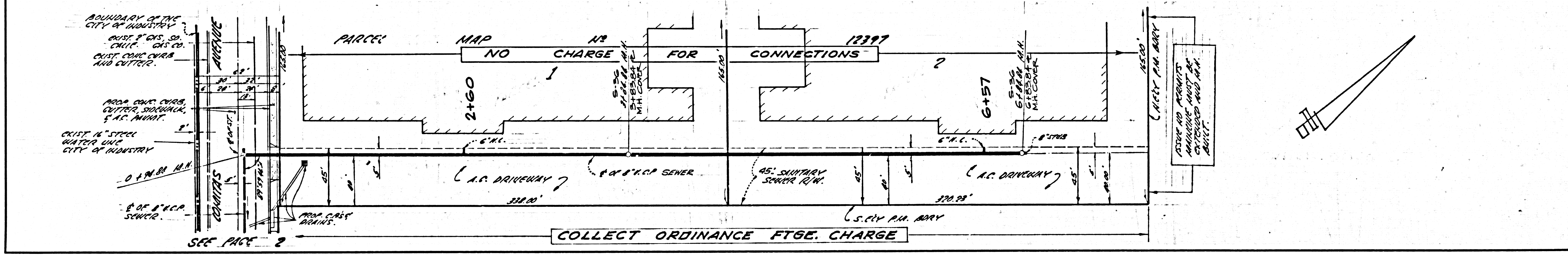
19851 61N 04M 1559A9A



COLLECT CHARGES AS INDICATED

199A92

SEE SAN DISTRICTS FOR SPECIAL CONNECTION CHARGES



COLLECT ORDINANCE FTGE. CHARGE