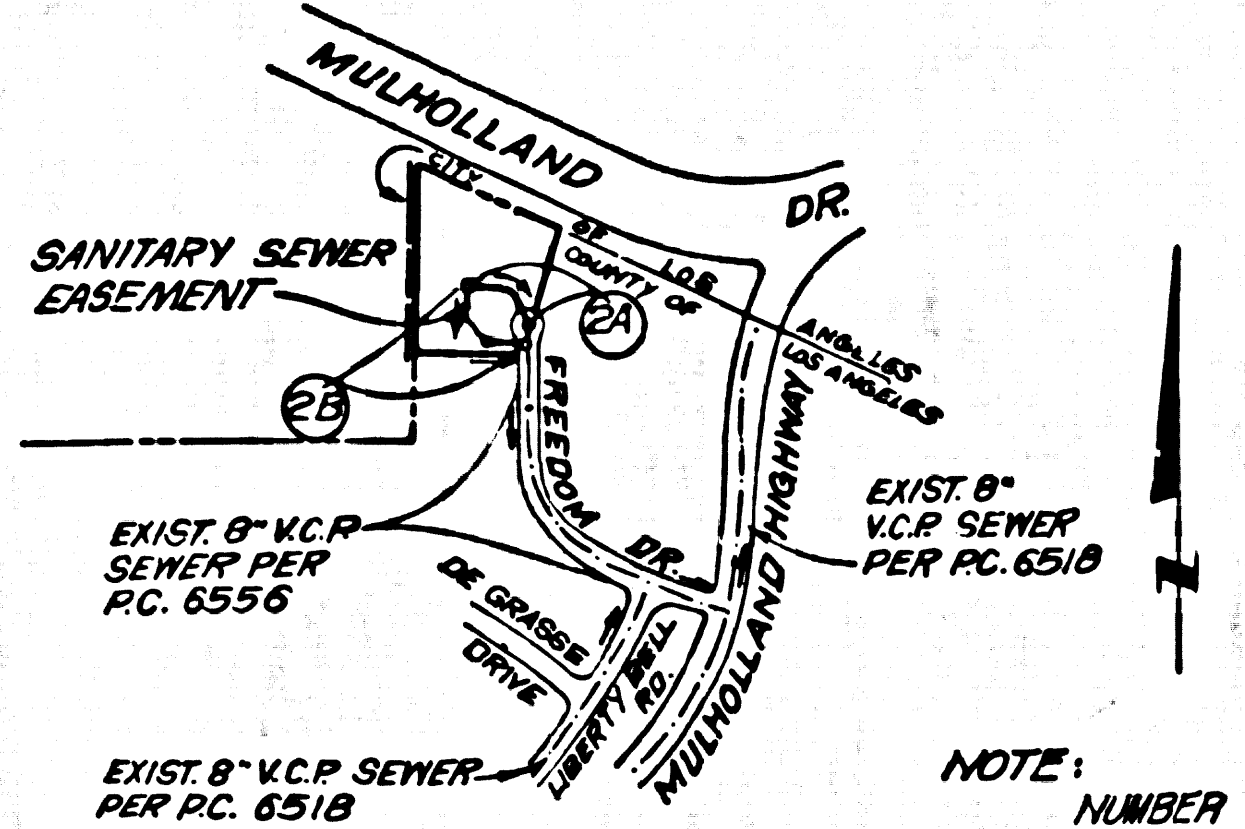


B.M. BY 7518 ELEV. 1092.094
 R.E. TAG 11932 N. C.B. 1 FT W. B.C.R.
 @ N.W. COR. MULHOLLAND HWY. &
 FREEDOM DR 60 FT W & 20 FT N. &
 INT. MALIBU QUAD. 1980.

DOUBLE SCALE



INDEX MAP
 TRACT NO. 34823
 PG. 91
 SCALE: 1"=600'

NOTE: NUMBER IN CIRCLE INDICATES PAGE NUMBER.

REVISION NO. 1 DATE 5/11/81
 REVISED ALIGNMENT AND GRADE OF
 PORTION OF LINE D ON PAGES 50, 51, 52
 DIVISION N 35.00 & 3 107 7
 APPROVED [Signature] OFFICE OF COUNTY ENGINEER

REVISION NO. 2 DATE 6-8-82
 REVISED LOCATION OF BLDGS.
 HOUSE LATERALS (FINISHED
 SURFACE OVER SPONGE)
 APPROVED [Signature] OFFICE OF COUNTY ENGINEER

GENERAL NOTES:

1. EXISTING ARE IN FEET ABOVE M.S.L. & U.S. SEA LEVEL UNLESS OTHERWISE NOTED.
2. ALL EXISTING GRADES IN THIS PLAN ARE SHOWN BY DASHED LINES.
3. THE CONSTRUCTION OF THE COUNTY ENGINEER SHALL BE THE RESPONSIBILITY OF THE CONTRACTOR.
4. GRADES TO WHICH THIS IMPROVEMENT IS TO BE CONSTRUCTED ARE SHOWN ON PLANS AND PROFILE GRADE POINTS FOR TOP OF CURB, CENTER LINE OF ROAD, AND SHOWN BY CIRCLES ON PROFILES. AT ALL POINTS BETWEEN GRADE POINTS THE GRADE IS TO BE CONSIDERED TO A STRAIGHT LINE UNLESS OTHERWISE INDICATED.
5. THE PRIVATE ENGINEER SHALL FURNISH THE COUNTY ENGINEER WITH GRADE SHEETS AND STATIONING FOR ALL HOUSE LATERALS AND "T" OR "Y" BRANCHES AND SHALL PROVIDE SEALS FOR THEM AT THESE PROPER LOCATIONS WITH STATIONING PLAINLY MARKED. ALL HOUSE LATERALS SHALL BE CONSTRUCTED BY A STRAIGHT ALIGNMENT AT RIGHT ANGLES FROM THE MAIN LINE SEWER UNLESS AS SHOWN ON THE PLANS. HOUSE LATERALS FROM CONCRETE SHALL HAVE AN ANGLE OF 45° FROM THE MAIN LINE SEWER. ANY CHANGE IN EXISTING GRADES IS INDICATED BY NOTING BY THE PRIVATE ENGINEER.
6. THE PRIVATE ENGINEER SHALL FURNISH THE HOUSE LATERAL SEWER AT THE PROPERTY LINE BELOW THE TOP OF CURB SEWER FOR EACH HOUSE LATERAL ON THE GRADE SHEET.
7. BEFORE WORK CAN BE STARTED, THE CONTRACTOR MUST OBTAIN A PERMIT TO EXCAVATE IN COUNTY STREETS FROM THE L.A. COUNTY ROAD DEPT., DISTRICT OFFICE NO. 8 AND A11 A PER TO THE COUNTY ENGINEER, 550 S. VERMONT AVE., L.A., CALIF. 90005. THE PERMIT TO EXCAVATE SHALL COVER THE COST OF CONSTRUCTION INSPECTION AND RECORD PLANS.
8. IF THERE IS TO BE EXCAVATION IN A ROAD RIGHT-OF-WAY, A PERMIT MUST BE OBTAINED FROM THE STATE OF CALIFORNIA, DIVISION OF HIGHWAYS, THE SOUTH SPRING STREET, SAN ANTONIO, CALIFORNIA.
9. APPROVAL OF THIS PLAN BY THE COUNTY OF LOS ANGELES DOES NOT CONSTITUTE A GUARANTEE AS TO THE ACCURACY OF THE RECORDS OF OR THE CORRECTNESS OF INFORMATION OF ANY INDIVIDUAL OR ENTITY WHOSE INTERESTS ARE AFFECTED BY THIS PROJECT. THE USER ASSUMES ALL RISK.
10. REFER TO SECTION 2-10.1 OF THE STANDARD SPECIFICATIONS, STANDARD BATTERY CODES.
11. REFER TO THE CHAPTER 2 OF THE REGULATED SEWER CONSTRUCTION PERMIT, THE CONTRACTOR SHALL OBTAIN AND FILE WITH THE COUNTY ENGINEER COPIES OF A PERMIT TO EXCAVATE IN COUNTY STREETS FROM THE LOS ANGELES COUNTY ROAD DEPARTMENT, A PERMIT FOR EXCAVATION AND THE PERMIT FROM THE STATE OF CALIFORNIA, DIVISION OF INDUSTRIAL SAFETY AND A CERTIFICATE OF CONTRACTOR'S PROFESSIONAL LIABILITY WITH THE DEPARTMENT OF COUNTY ENGINEER, 550 S. VERMONT, LOS ANGELES, CALIFORNIA. THESE SHALL BE MAINTAINED AS THE CERTIFICATE HOLDER IS NOTIFIED SO LONG AS THEY ARE NECESSARY TO THE PROJECT.

PROFILE, ALIGNMENT AND GRADE OF
SANITARY SEWERS PAGE 1

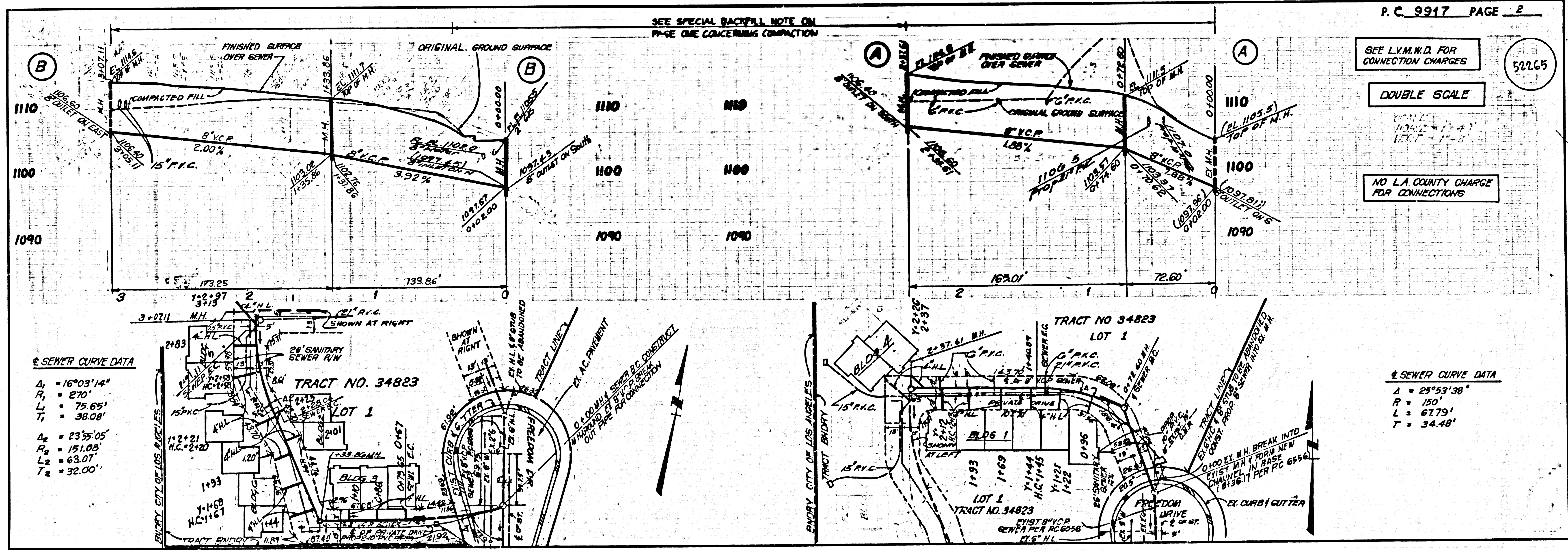
TO BE CONSTRUCTED IN
 TRACT NO. 34823
 PRIVATE CONTRACT NO. 9917
 W.S. 60
 1 SHEET, 2 PAGES
 SCALE: VERT. 1"=4'
 HORIZ. 1"=40'
 DEC. 1980
 PREPARED IN THE OFFICES OF
 W.T.N. LOS ANGELES
 5518 VAN NUYS BLVD.
 VAN NUYS, CALIF. 91411
 BY: Alan P. Wood
 REG. C. E. No. 25973

THE FOLLOWING LATEST REVISED STANDARD PLANS ON FILE IN THE OFFICE OF THE COUNTY ENGINEER SHALL APPLY TO THE CONSTRUCTION OF THIS PROJECT.

SEWER	5-1
STANDARD PUBLIC SAFETY REQUIREMENTS	5-2
SEWER MANHOLE	5-3
STANDARD MANHOLE STEP	5-7
SEWER FOR SEWER PIPE	5-8
CHASING AND ENCASING	5-9
WYE ON THE SUPPORT	5-10
ALLOWABLE TRENCH WIDTHS	5-11
SOILING MANHOLE FRAME AND COVER	5-12
NON-REINFORCED PRECAST CONCRETE MANHOLE	5-13

COUNTY OF LOS ANGELES, CALIFORNIA
 STEPHEN J. KOONCE, COUNTY ENGINEER LAS VIRGENES MUNICIPAL WATER DISTRICT

APPROVED: [Signature] DATE 5/11/81
 [Signature] DATE 5/11/81
 CHECKED: [Signature] DATE
 REG. C.E. NO. 16883
 CALABASAS BLDG. DIST. 9.1



SEWER CURVE DATA

A	= 16°03'14"
R	= 270'
L	= 75.65'
T	= 38.08'
A ₂	= 23°55'05"
R ₂	= 151.05'
L ₂	= 63.07'
T ₂	= 32.00'

SEWER CURVE DATA

A	= 25°53'38"
R	= 150'
L	= 67.79'
T	= 34.48'

52823 0M TRACT 1
 52823