

SANITARY SEWERS

TO BE CONSTRUCTED IN VIOLIN CANYON ROAD

PRIVATE CONTRACT NO. 9923

INDEX 291 5 097

W.S. 77

1 SHEETS, 2 PAGES

49516

SCALE: VERT. 1" = 4' HORIZ. 1" = 40'

DEC. 1980 PREPARED IN THE OFFICES OF RODCHOW ENGINEERING CO. 1501 MIDVALE AVE. L.A. CA. 90024

BY: Rodney H. Chow REG. C. E. No. 11478

THE FOLLOWING LATEST REVISED STANDARD PLANS ON FILE IN THE OFFICE OF THE COUNTY ENGINEER SHALL APPLY IN THE CONSTRUCTION OF THIS PROJECT.

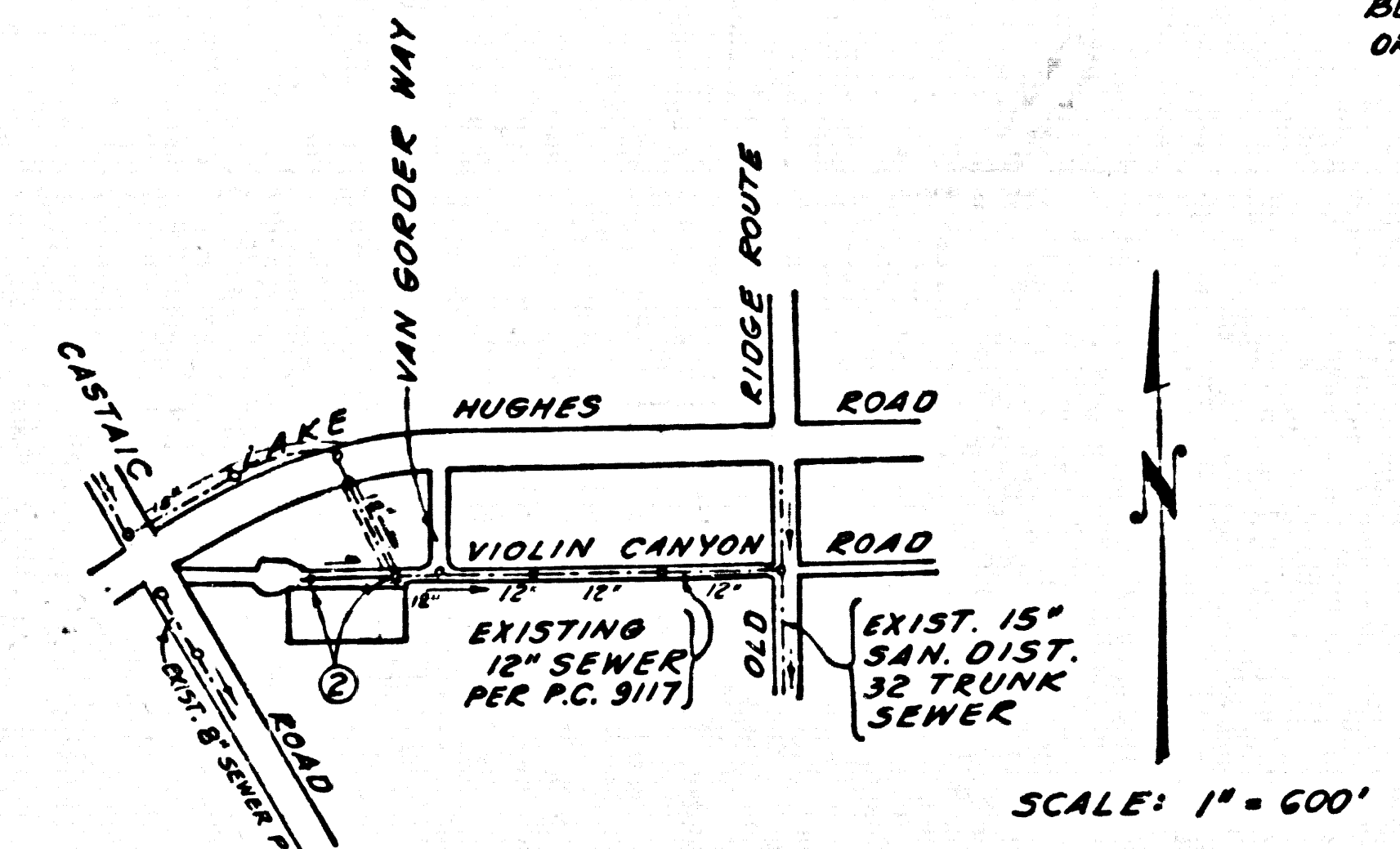
STANDARD PLAN NO. 1	5-1
STANDARD PLAN NO. 2	5-2
STANDARD PLAN NO. 3	5-3
STANDARD PLAN NO. 4	5-4
STANDARD PLAN NO. 5	5-5
STANDARD PLAN NO. 6	5-6
STANDARD PLAN NO. 7	5-7
STANDARD PLAN NO. 8	5-8
STANDARD PLAN NO. 9	5-9
STANDARD PLAN NO. 10	5-10
STANDARD PLAN NO. 11	5-11
STANDARD PLAN NO. 12	5-12
STANDARD PLAN NO. 13	5-13
STANDARD PLAN NO. 14	5-14
STANDARD PLAN NO. 15	5-15
STANDARD PLAN NO. 16	5-16
STANDARD PLAN NO. 17	5-17
STANDARD PLAN NO. 18	5-18
STANDARD PLAN NO. 19	5-19
STANDARD PLAN NO. 20	5-20
STANDARD PLAN NO. 21	5-21
STANDARD PLAN NO. 22	5-22
STANDARD PLAN NO. 23	5-23
STANDARD PLAN NO. 24	5-24
STANDARD PLAN NO. 25	5-25
STANDARD PLAN NO. 26	5-26
STANDARD PLAN NO. 27	5-27
STANDARD PLAN NO. 28	5-28
STANDARD PLAN NO. 29	5-29
STANDARD PLAN NO. 30	5-30
STANDARD PLAN NO. 31	5-31
STANDARD PLAN NO. 32	5-32
STANDARD PLAN NO. 33	5-33
STANDARD PLAN NO. 34	5-34
STANDARD PLAN NO. 35	5-35
STANDARD PLAN NO. 36	5-36
STANDARD PLAN NO. 37	5-37
STANDARD PLAN NO. 38	5-38
STANDARD PLAN NO. 39	5-39
STANDARD PLAN NO. 40	5-40
STANDARD PLAN NO. 41	5-41
STANDARD PLAN NO. 42	5-42
STANDARD PLAN NO. 43	5-43
STANDARD PLAN NO. 44	5-44
STANDARD PLAN NO. 45	5-45
STANDARD PLAN NO. 46	5-46
STANDARD PLAN NO. 47	5-47
STANDARD PLAN NO. 48	5-48
STANDARD PLAN NO. 49	5-49
STANDARD PLAN NO. 50	5-50
STANDARD PLAN NO. 51	5-51
STANDARD PLAN NO. 52	5-52
STANDARD PLAN NO. 53	5-53
STANDARD PLAN NO. 54	5-54
STANDARD PLAN NO. 55	5-55
STANDARD PLAN NO. 56	5-56
STANDARD PLAN NO. 57	5-57
STANDARD PLAN NO. 58	5-58
STANDARD PLAN NO. 59	5-59
STANDARD PLAN NO. 60	5-60
STANDARD PLAN NO. 61	5-61
STANDARD PLAN NO. 62	5-62
STANDARD PLAN NO. 63	5-63
STANDARD PLAN NO. 64	5-64
STANDARD PLAN NO. 65	5-65
STANDARD PLAN NO. 66	5-66
STANDARD PLAN NO. 67	5-67
STANDARD PLAN NO. 68	5-68
STANDARD PLAN NO. 69	5-69
STANDARD PLAN NO. 70	5-70
STANDARD PLAN NO. 71	5-71
STANDARD PLAN NO. 72	5-72
STANDARD PLAN NO. 73	5-73
STANDARD PLAN NO. 74	5-74
STANDARD PLAN NO. 75	5-75
STANDARD PLAN NO. 76	5-76
STANDARD PLAN NO. 77	5-77
STANDARD PLAN NO. 78	5-78
STANDARD PLAN NO. 79	5-79
STANDARD PLAN NO. 80	5-80
STANDARD PLAN NO. 81	5-81
STANDARD PLAN NO. 82	5-82
STANDARD PLAN NO. 83	5-83
STANDARD PLAN NO. 84	5-84
STANDARD PLAN NO. 85	5-85
STANDARD PLAN NO. 86	5-86
STANDARD PLAN NO. 87	5-87
STANDARD PLAN NO. 88	5-88
STANDARD PLAN NO. 89	5-89
STANDARD PLAN NO. 90	5-90
STANDARD PLAN NO. 91	5-91
STANDARD PLAN NO. 92	5-92
STANDARD PLAN NO. 93	5-93
STANDARD PLAN NO. 94	5-94
STANDARD PLAN NO. 95	5-95
STANDARD PLAN NO. 96	5-96
STANDARD PLAN NO. 97	5-97
STANDARD PLAN NO. 98	5-98
STANDARD PLAN NO. 99	5-99
STANDARD PLAN NO. 100	5-100

COUNTY OF LOS ANGELES, CALIFORNIA  
 STEPHEN J. KOONCE, COUNTY ENGINEER WALTER E. GARRISON, CHIEF ENGINEER  
 APPROVED: *Martin L. Magley 4/27/81* APPROVED: *John M. Fuller 5/1/81*  
 CHECKED: *Halp David Dent 4/27/81*  
 REG. C. E. No. 16773  
 SANTA CLARITA VALLEY LGD. DIST. 82

B.M. CL-1966 ELEV. 1151.583  
 L & BN NE. ABUT. BRIDGE #B710  
 18 FT. E. C/L RIDGE ROUTE  
 0.2 MI. N. CASTAIC RD. MKD(SM)  
 NEWHALL QUAD. 19 72

PRIVATE ENGINEER'S NOTICE TO CONTRACTORS DOUBLE SCALE GENERAL NOTES:  
 THE EXISTENCE AND LOCATION OF ANY UNDERGROUND UTILITY PIPES OR STRUCTURES ON THESE PLANS ARE OBTAINED BY A SEARCH OF THE AVAILABLE RECORDS. TO THE BEST OF MY KNOWLEDGE THERE ARE NO EXISTING UTILITIES EXCEPT AS SHOWN ON THESE PLANS. THE CONTRACTOR IS REQUIRED TO TAKE DUE PRECAUTIONARY MEASURES TO PROTECT THE UTILITY LINES SHOWN AND ANY OTHER LINES NOT OF RECORD OR NOT SHOWN ON THESE PLANS.

NOTICE TO CONTRACTOR  
 BEFORE STARTING EXCAVATION, THE CONTRACTOR SHOULD CONTACT 48 HRS. OR TWO WORKING DAYS IN ADVANCE:  
 SO. CALIF. GAS CO. 213-246 4961 EXT. 356 AND 805-259 4600  
 SO. CALIF. EDISON CO. 805-257 9025  
 U.S.A. TOLL FREE 800-422 4133

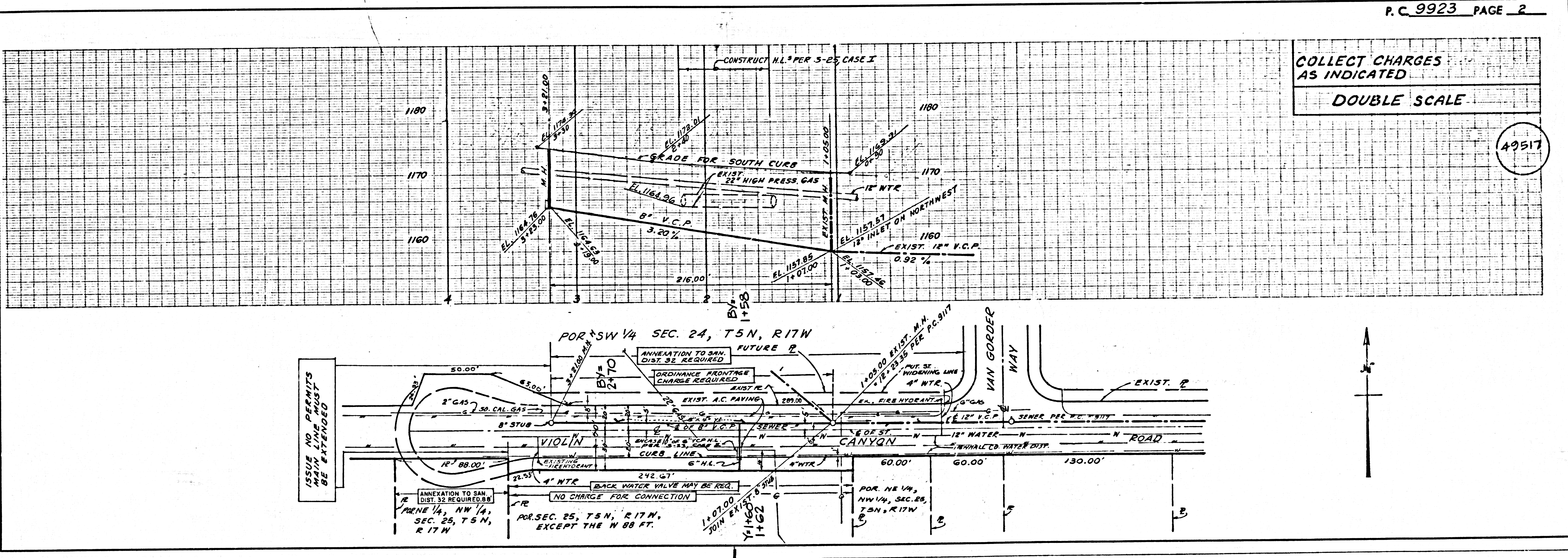


INDEX MAP P.C. 9923  
 SEWER IN VIOLIN CANYON ROAD  
 NOTE: NUMBER IN CIRCLE INDICATE PAGE NUMBER

NO CONNECTION FOR THE DISPOSAL OF INDUSTRIAL WASTES SHALL BE MADE TO SEWERS SHOWN ON THESE DRAWINGS UNTIL A PERMIT FOR INDUSTRIAL WASTEWATER DISCHARGE HAS BEEN ISSUED BY THE SANITATION DISTRICTS FOR SAID CONNECTION.  
 BEFORE BREAKING INTO OR CONSTRUCTION ON A COUNTY SANITATION DISTRICT SEWER AND PRIOR TO FINAL ACCEPTANCE OF THE PROJECT, SANITATION DISTRICT INSPECTOR SHALL BE NOTIFIED BY PHONE - 962-8605, NUMBER 50 THAT REQUIRED INSPECTION CAN BE MADE.

- GENERAL NOTES:
- ELEVATIONS ARE IN FEET ABOVE U.S.C. & G.S. BY LEVEL DATUM OF 1988.
  - NO REVISIONS SHALL BE MADE IN THESE PLANS WITHOUT THE APPROVAL OF THE COUNTY ENGINEER.
  - NO REPRESENTATIVE OF THE COUNTY ENGINEER WILL SURVEY OR LAY OUT ANY PORTION OF THE WORK.
  - GRADES TO WHICH THIS IMPROVEMENT IS TO BE CONSTRUCTED ARE SHOWN ON PLANS AND PROFILES. GRADE POINTS FOR TOP OF CURB, CENTER LINE OF STREETS OR CENTER LINE OF ALLEYS ARE SHOWN BY CIRCLES ON PROFILES. AT ALL POINTS BETWEEN DESIGNATED POINTS THE GRADE SHALL BE ESTABLISHED SO AS TO CONFORM TO A STRAIGHT LINE DRAWN BETWEEN SAID DESIGNATED POINTS.
  - THE PRIVATE ENGINEER SHALL FURNISH THE COUNTY ENGINEER WITH GRADE SHEETS AND STATIONINGS FOR ALL HOUSE LATERALS AND "Y" OR "T" BRANCHES AND SHALL PROVIDE STAKES FOR THEM AT THE PROPER LOCATIONS WITH STATIONING PLAINLY MARKED. ALL HOUSE LATERALS SHALL BE CONSTRUCTED IN A STRAIGHT ALIGNMENT AT RIGHT ANGLES FROM THE MAIN LINE SEWER EXCEPT AS SHOWN ON THE PLANS. HOUSE LATERALS FROM CHIMNEYS SHALL NOT HAVE AN ANGLE OF LESS THAN 45° WITH THE MAIN LINE SEWER. ANY CHANGE IN ALIGNMENT SHALL BE REQUESTED IN WRITING BY THE PRIVATE ENGINEER.
  - THE PRIVATE ENGINEER SHALL FURNISH THE HOUSE LATERAL DEPTH AT THE PROPERTY LINE BELOW THE TOP OF CURB ELEVATION FOR EACH HOUSE LATERAL ON THE GRADE SHEET.
  - BEFORE WORK CAN BE STARTED, THE CONTRACTOR MUST OBTAIN A PERMIT TO EXCAVATE IN COUNTY STREETS FROM THE L.A. COUNTY ROAD DEPT., DISTRICT OFFICE NO. 5 AND PAY A FEE TO THE COUNTY ENGINEER, 888 S. VERNON AVENUE, LOS ANGELES, CA 90024, TO COVER THE COST OF CONSTRUCTION INSPECTION AND RECORD PLANS.
  - IF WORK IS TO BE DONE IN A STATE HIGHWAY, A PERMIT MUST BE OBTAINED FROM THE STATE OF CALIFORNIA, DIVISION OF HIGHWAYS, 130 SOUTH SPRING STREET, LOS ANGELES, CALIFORNIA.
  - APPROVAL OF THIS PLAN BY THE COUNTY OF LOS ANGELES DOES NOT CONSTITUTE A REPRESENTATION AS TO THE ACCURACY OF THE LOCATION OF OR THE EXISTENCE OR NON-EXISTENCE OF ANY UNDERGROUND UTILITY PIPE, OR STRUCTURE WITHIN THE LIMITS OF THIS PROJECT. THIS NOTE APPLIES TO ALL PAGES.
  - REFER TO SECTION 15.41 OF THE STANDARD SPECIFICATIONS, REGARDING SAFETY ORDERS.
  - PRIOR TO THE ISSUANCE OF THE REQUIRED SEWER CONSTRUCTION PERMIT, THE CONTRACTOR SHALL OBTAIN AND FILE WITH THE COUNTY ENGINEER COPIES OF A PERMIT TO EXCAVATE IN COUNTY STREETS FROM THE LOS ANGELES COUNTY ROAD DEPARTMENT, A PERMIT FOR EXCAVATIONS AND TRENCHES FROM THE STATE OF CALIFORNIA, DIVISION OF INDUSTRIAL SAFETY AND A CERTIFICATE OF WORKERS COMPENSATION INSURANCE WITH THE DEPARTMENT OF COUNTY ENGINEER, 880 SOUTH VERNON, RM. 408, LOS ANGELES, CALIFORNIA 90024, NAMED AS THE CERTIFICATE HOLDER TO BE NOTIFIED 30 DAYS PRIOR TO CANCELLATION OF POLICY.

- CONSTRUCTION NOTES:
- WORK SHALL BE CONSTRUCTED ACCORDING TO THE STANDARD SPECIFICATIONS FOR PUBLIC WORKS CONSTRUCTION (1978 EDITION WITH 1979 AMENDMENTS) AND COUNTY ENGINEER SPECIAL PROVISIONS FOR THE CONSTRUCTION OF SANITARY SEWERS DATED SEPTEMBER 21, 1979 AND SHALL BE PROSECUTED ONLY IN THE PRESENCE OF THE COUNTY ENGINEER.
  - THE CONTRACTOR SHALL NOTIFY THE ENVIRONMENTAL DEVELOPMENT DIVISION BY TELEPHONE, 738-2108, AT LEAST TWENTY-FOUR HOURS BEFORE STARTING ANY WORK UNDER THIS CONTRACT.
  - HOUSE LATERALS TO BE CONSTRUCTED WITH INVERTS AT PROPERTY LINE 6 FEET BELOW CURB GRADE EXCEPT AS NOTED.
  - WYE OR TEE BRANCHES MAY BE USED FOR CONNECTIONS TO MAINLINE SEWERS EXCEPT AS NOTED.
  - ALL STRUCTURES SHALL BE EITHER BRICK MANHOLES PER 8-3 OR PRECAST CONCRETE MANHOLES PER 8-3B, EXCEPT AS NOTED.
  - PROVIDE STAKES ON THE PROPERTY LINE OR PROPERTY LINES PRODUCED AT RIGHT ANGLES TO THE SEWER LINE AT THE CENTER LINE OF EACH MANHOLE.
  - MANHOLE TOPS IN UNIMPROVED AREAS OF WAY TO BE 26 INCHES ABOVE FINISHED GRADE.
  - WITHEDED CLAY PIPE JOINTS SHALL BE TYPE "D" OR "E" PER STANDARD SPECIFICATIONS SECTION 88-8.
  - IF A POWER POLE IS WITHIN THREE FEET OF THE SEWER, THE SEWER SHALL BE ENCASED, PER 8-3B, CASE II, TWO FEET ON EACH SIDE FROM THE POINT OF INTERFERENCE.
  - IF DURING THE COURSE OF CONSTRUCTION IT IS DETERMINED THAT THERE IS LESS THAN FOUR FEET OF COVER OVER THE TOP OF A MAIN LINE OR HOUSE LATERAL SEWER WHICH IS NOT INDICATED ON THE PLANS, THE PIPE SHALL BE ENCASED PER 8-3B, CASE II UNLESS OTHERWISE APPROVED BY THE COUNTY ENGINEER.
  - ALL JOINTS BETWEEN CAST IRON PIPE AND WITHEDED CLAY PIPE SHALL BE MADE WITH A RUBBER BLEEVE JOINT, TYPE "C" OR "D", (WITH BUSHINGS IF NECESSARY) PER STANDARD SPECIFICATIONS, SECTION 88-8.
  - SEWERS TO BE TESTED FOR LEAKS PER SECTION 88-1.4 OF THE STANDARD SPECIFICATIONS AND SPECIAL PROVISIONS.
  - RESURFACE ALL TRENCHES WITHIN PAVED AREAS TO MEET L.A. COUNTY ROAD DEPT. OR CALIFORNIA STATE HIGHWAY REQUIREMENTS IN ACCORDANCE WITH PERMITS.
  - FULL COMPLIANCE WITH SECTION 88-1.3.5 OF THE SPECIAL PROVISIONS WILL BE REQUIRED FOR BACKFILL IN STREETS. CERTIFICATION OF BACKFILL COMPACTION AND SAND EQUIVALENTS BY A QUALIFIED, REGISTERED TESTING LABORATORY SHALL BE PROVIDED BY THE PERMITTEE PRIOR TO THE ISSUANCE OF A CERTIFICATE OF PARTIAL ACCEPTANCE.
  - SPECIAL BACKFILL IN BASEMENT CONSTRUCTION (A) BACKFILL TRENCH AND REPLACE OTHER EARTH SO AS TO ACHIEVE THE NATURAL OR FINISHED GRADES AND SLOPES SHOWN ON THE GRADING PLAN APPROVED FOR THIS DEVELOPMENT BY THE BUILDING AND SAFETY DIVISION (B) ALL BACKFILL AND EARTH REPLACED SHALL BE COMPACTED TO A MINIMUM OF 98% OF MAXIMUM DENSITY PER A.S.T.M. STD. METHOD OF TEST D1557 AS MODIFIED. ACCEPTABLE CERTIFICATION OF SUCH COMPACTION SHALL BE SUBMITTED TO THE ENVIRONMENTAL DEVELOPMENT DIVISION.



COLLECT CHARGES AS INDICATED  
 DOUBLE SCALE

49517

ESSE CP DA09 NOVYAD WJON