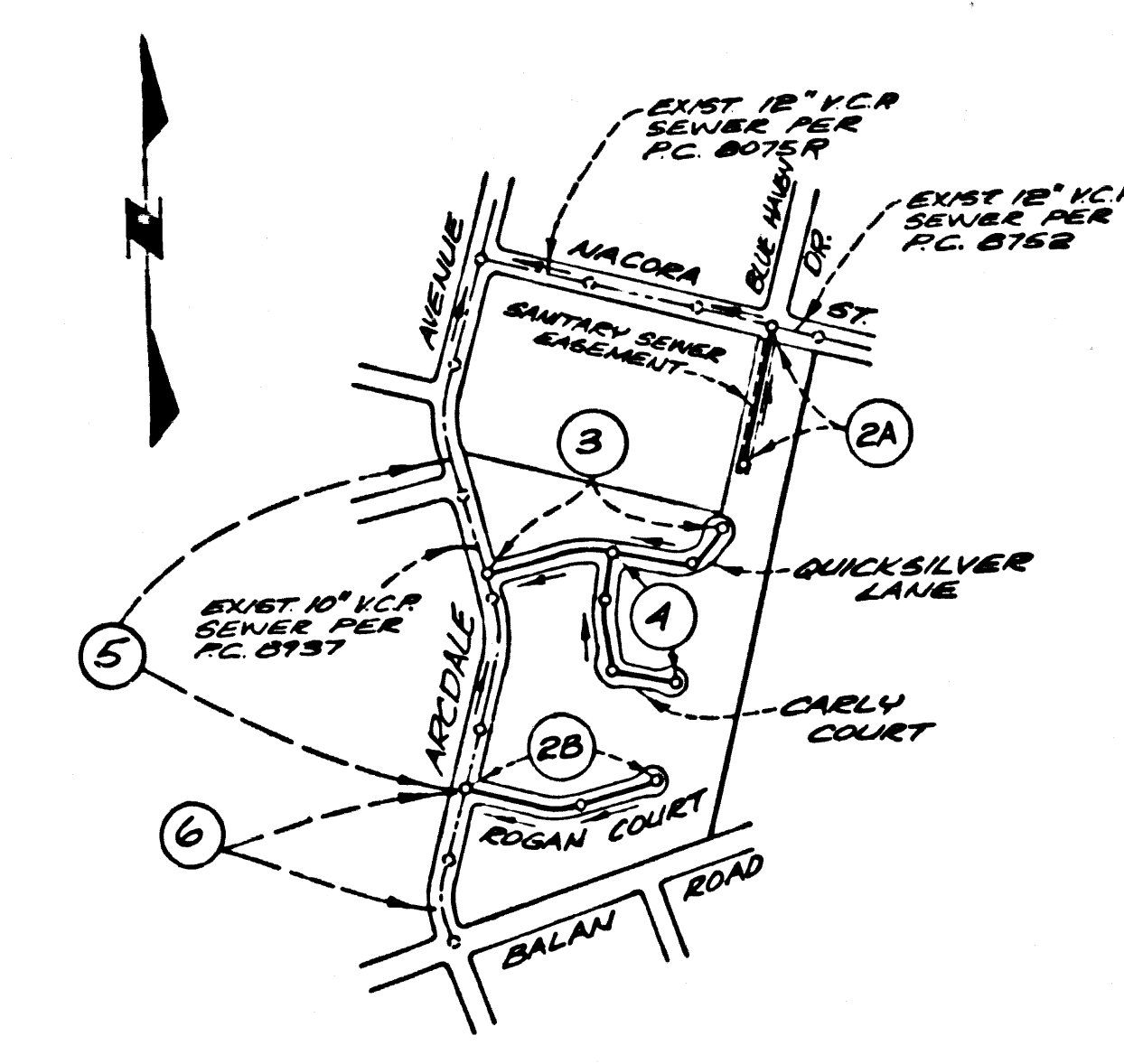


TO BE CONSTRUCTED IN  
TRACT NO. 40765  
PRIVATE CONTRACT NO. 9926

W.S. 38-E, 4  
3 SHEETS, 6 PAGES  
JANUARY, 1981  
PREPARED IN THE OFFICES OF  
PFELER & ASSOCIATES ENGINEERS  
1559 W. COMMONWEALTH AVE., FULLERTON CALIFORNIA 92633  
REG. C.E. NO. 12507

B.M. CG 4236 ELEV. 607.111  
ROAD DEPT. B.M. TAG IN CONC.  
CURB 5' W. B.C.R., 51' W. & 20' N.  
OF C/L INT. ARCADE AVE &  
BALAN RD.  
OTTERBEIN QUAD. 1980 (ADJ.)



INDEX MAP  
P.C. 9926, TRACT NO. 40765  
SCALE: 1" = 600'

NOTE:  
Numbers in circles indicate  
page numbers.

- GENERAL NOTES:
- ELEVATIONS ARE IN FEET ABOVE M.S.L. & C.S. SEA LEVEL DATUM OF 1929.
  - NO REVISIONS SHALL BE MADE IN THESE PLANS WITHOUT THE APPROVAL OF THE COUNTY ENGINEER.
  - NO REPRESENTATIVE OF THE COUNTY ENGINEER WILL SURVEY OR LAY OUT ANY PORTION OF THE WORK.
  - GRADES TO WHICH THIS IMPROVEMENT IS TO BE CONSTRUCTED ARE SHOWN ON PLANS AND PROFILES. GRADE POINTS FOR TOP OF CURB, CENTER LINE OF STREETS, OR CENTER LINE OF ALLEYS ARE SHOWN BY CIRCLES ON PROFILES AT ALL POINTS BETWEEN DESIGNATED POINTS THE GRADE SHALL BE ESTABLISHED SO AS TO CONFORM TO A STRAIGHT LINE DRAWN BETWEEN SAID DESIGNATED POINTS.
  - THE PRIVATE ENGINEER SHALL FURNISH THE COUNTY ENGINEER WITH GRADE SHEETS AND STATIONING FOR ALL HOUSE LATERALS AND "T" OR "Y" BRANCHES AND SHALL PROVIDE SIGNALS FOR THEM AT THEIR PROPER LOCATIONS WITH STATIONING PLAINLY MARKED. ALL HOUSE LATERALS SHALL BE CONSTRUCTED IN A STRAIGHT ALIGNMENT AT RIGHT ANGLES FROM THE MAIN LINE SEWER EXCEPT AS SHOWN ON THE PLANS. HOUSE LATERALS FROM CHIMNEYS SHALL NOT HAVE AN ANGLE OF LESS THAN 45° WITH THE MAIN LINE SEWER. ANY CHANGE IN ALIGNMENT SHALL BE REQUESTED IN WRITING BY THE PRIVATE ENGINEER.
  - THE PRIVATE ENGINEER SHALL FURNISH THE HOUSE LATERAL DEPTH AT THE PROPERTY LINE BELOW THE TOP OF CURB ELEVATION FOR EACH HOUSE LATERAL ON THE GRADE SHEET.
  - BEFORE WORK CAN BE STARTED, THE CONTRACTOR MUST OBTAIN A PERMIT TO EXCAVATE IN COUNTY STREETS FROM THE L.A. COUNTY ROAD DEPT., DISTRICT OFFICE NO. ... AND PAY A FEE TO THE COUNTY ENGINEER 8016 ZENITH AVE. SAN DIMAS REGIONAL OFFICE, TO COVER THE COST OF CONSTRUCTION INSPECTION AND RECORD PLANS.
  - IF WORK IS TO BE DONE IN A STATE HIGHWAY, A PERMIT MUST BE OBTAINED FROM THE STATE OF CALIFORNIA, DIVISION OF HIGHWAYS, 138 SOUTH SPRING STREET, LOS ANGELES, CALIFORNIA.
  - APPROVAL OF THIS PLAN BY THE COUNTY OF LOS ANGELES DOES NOT CONSTITUTE A REPRESENTATION AS TO THE ACCURACY OF THE LOCATION OR OF THE EXISTENCE OR NON-EXISTENCE OF ANY UNDERGROUND UTILITY PIPE, OR STRUCTURE WITHIN THE LIMITS OF THIS PROJECT. THIS NOTE APPLIES TO ALL TILES.
  - REFER TO SECTION 7-18.1 OF THE STANDARD SPECIFICATIONS, REGARDING SAFETY DEVICES.
  - FROM THE ISSUANCE OF THE REQUIRED SEWER CONSTRUCTION PERMIT BY THE COUNTY ENGINEER, THE CONTRACTOR SHALL OBTAIN A PERMIT TO EXCAVATE FROM THE ENGINEER, THE COUNTY ENGINEER SHALL OBTAIN A PERMIT TO EXCAVATE FROM THE STATE OF CALIFORNIA, DEPARTMENT OF INDUSTRIAL RELATIONS, DIVISION OF INDUSTRIAL SAFETY AND SHALL FILE A CERTIFICATE OF EMPLOYERS COMPENSATION INSURANCE WITH THE COUNTY ENGINEER, NAMED AS CERTIFICATE HOLDER TO BE NOTIFIED 30 DAYS PRIOR TO CANCELLATION OF POLICY.

REVISION NO. 1 DATE 6/30/81  
REVISED PROFILE GRADES TO 4" V.C. PAGE 2, STA. 1+05 TO 4+33.  
APPROVED *Debra E. Johnson*  
OFFICE OF COUNTY ENGINEER

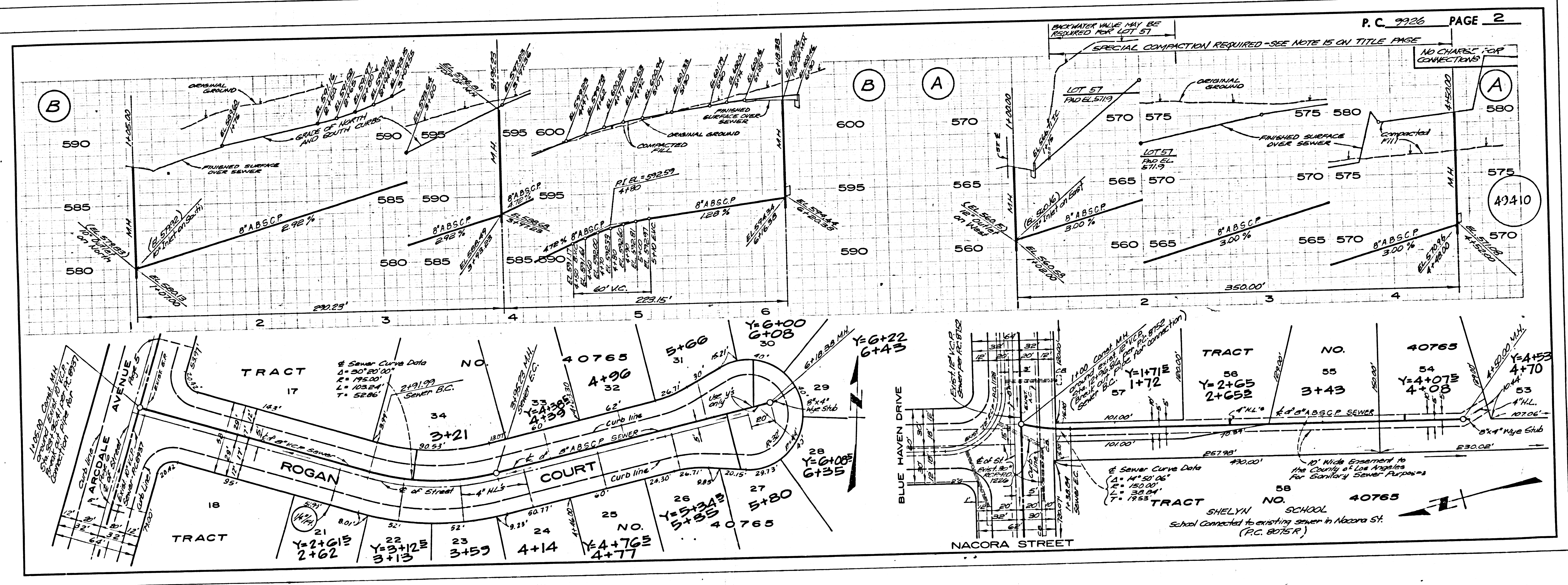
- CONSTRUCTION NOTES:
- WORK SHALL BE CONSTRUCTED ACCORDING TO THE STANDARD SPECIFICATIONS FOR PUBLIC WORKS CONSTRUCTION (1978 EDITION) WITH 1982 SUPPLEMENTS AND COUNTY ENGINEER SPECIAL PROVISIONS FOR THE CONSTRUCTION OF SANITARY SEWERS DATED 8/11/78. NO WORK SHALL BE PROSECUTED UNLESS IN THE PRESENCE OF THE COUNTY ENGINEER.
  - THE CONTRACTOR SHALL NOTIFY THE ENVIRONMENTAL DEVELOPMENT DIVISION PHONE 213-758-2156, AT LEAST TWENTY FOUR HOURS BEFORE STARTING ANY WORK UNDER THIS CONTRACT.
  - HOUSE LATERALS TO BE CONSTRUCTED WITH INVERTS AT PROPERTY LINE & FEET BELOW CURB GRADE EXCEPT AS NOTED.
  - WYE OR THE BRANCHES MAY BE USED FOR CONNECTIONS TO MAINTAIN SEWERS EXCEPT AS NOTED.
  - ALL STRUCTURES SHALL BE EITHER BRICK MANHOLES PER S-3 OR PRECAST CONCRETE MANHOLES PER S-4, EXCEPT AS NOTED.
  - PROVIDE STAKES ON THE PROPERTY LINE OR PROPERTY LINES PRODUCED AT RIGHT ANGLES TO THE SEWER LINE AT THE CENTER LINE OF EACH MANHOLE.
  - MANHOLE TOPS IN UNIMPROVED RIGHTS OF WAY TO BE SIX INCHES ABOVE FINISHED GRADE.
  - VERTIFIED CLAY PIPE JOINTS SHALL BE TYPE "B", OR "D" PER STANDARD SPECIFICATIONS SECTION 208.2.
  - IF A POWER POLE IS WITHIN THREE FEET OF THE SEWER, THE SEWER SHALL BE ENCASED, PER S-23, CASE II, TWO FEET ON EACH SIDE FROM THE POINT OF INTERFERENCE.
  - IF DURING THE COURSE OF CONSTRUCTION IT IS DETERMINED THAT THERE IS LESS THAN FOUR FEET OF COVER OVER THE TOP OF A MAIN LINE OR HOUSE LATERAL Y.C.P. SEWER WHICH IS NOT INDICATED ON THE PLANS, THE PIPE SHALL BE ENCASED PER S-23, CASE II UNLESS OTHERWISE APPROVED BY THE COUNTY ENGINEER.
  - ALL JOINTS BETWEEN CLAY PIPE AND VERTIFIED CLAY PIPE SHALL BE MADE WITH A RUBBER SLEEVE JOINT, TYPE "C" OR "D", WITH SLEEVING IF NECESSARY PER STANDARD SPECIFICATIONS, SECTION 208.2.
  - SEWERS TO BE TESTED FOR LEAKAGE PER SECTION 306-14 OF THE STANDARD SPECIFICATIONS AND SPECIAL PROVISIONS.
  - REPAIR ALL TRENCHES WITHIN PAVED AREAS TO MEET L.A. COUNTY ROAD DEPT. OF CALIFORNIA STATE HIGHWAY REQUIREMENTS IN ACCORDANCE WITH PERMITS.
  - FULL COMPLIANCE WITH SECTION 306-1.55 OF THE SPECIAL PROVISIONS WILL BE REQUIRED FOR BACKFILL IN STREETS. CERTIFICATION OF BACKFILL COMPACTION AND BANG EQUIVALENTS BY A QUALIFIED, REGISTERED TESTING LABORATORY SHALL BE PROVIDED BY THE CONTRACTOR PRIOR TO THE ISSUANCE OF A CERTIFICATE OF PARTIAL ACCEPTANCE.
  - SPECIAL BACKFILL IN DESIGNATED AREAS:  
(A) BACKFILL TRENCH AND REPLACE OTHER EXISTING REMOVED SO AS TO ACHIEVE THE NATURAL OR ENHANCED GRADES AND SLOPES SHOWN ON THE GRADING PLAN APPROVED FOR THIS TRACT AND BY THE PUBLIC WORKS DIVISION.  
(B) BACKFILL IN DESIGNATED AREAS SHALL BE COMPACTED TO A MINIMUM OF 90% MAXIMUM DENSITY PER ASTM STANDARD METHOD E-1557. BACKFILL SHALL BE PROVIDED ACCORDING TO THE ENVIRONMENTAL DEVELOPMENT DIVISION. SUCH STANDARD METHOD SHALL BE SUBMITTED TO THE ENVIRONMENTAL DEVELOPMENT DIVISION.

THE FOLLOWING LATEST REVISED STANDARD PLANS ON FILE IN THE OFFICE OF THE COUNTY ENGINEER SHALL APPLY IN THE CONSTRUCTION OF THIS PROJECT:

LEGEND	S-1
MINIMUM PUBLIC SAFETY REQUIREMENTS	S-2
BRICK MANHOLE	S-3
STANDARD MANHOLE STEP	S-7
BEDDING FOR SEWER PIPE	S-8
CLADDING AND ENCASEMENT	S-23
WYE OR THE BRANCH	S-24
ALLOWABLE TRENCH WIDTHS	S-25
LOCING MANHOLE FRAME AND COVER	S-26
NON-REINFORCED PRECAST CONCRETE MANHOLE	S-28
SADDLES FOR HOUSE LATERALS	S-29

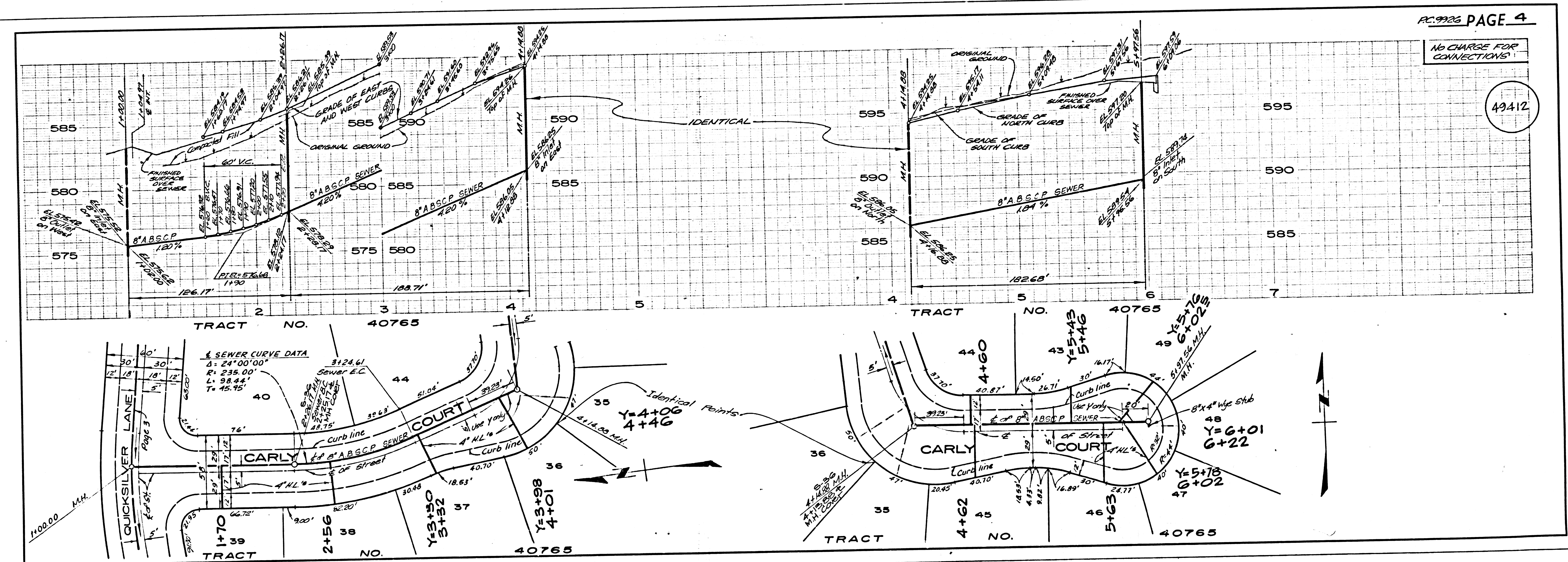
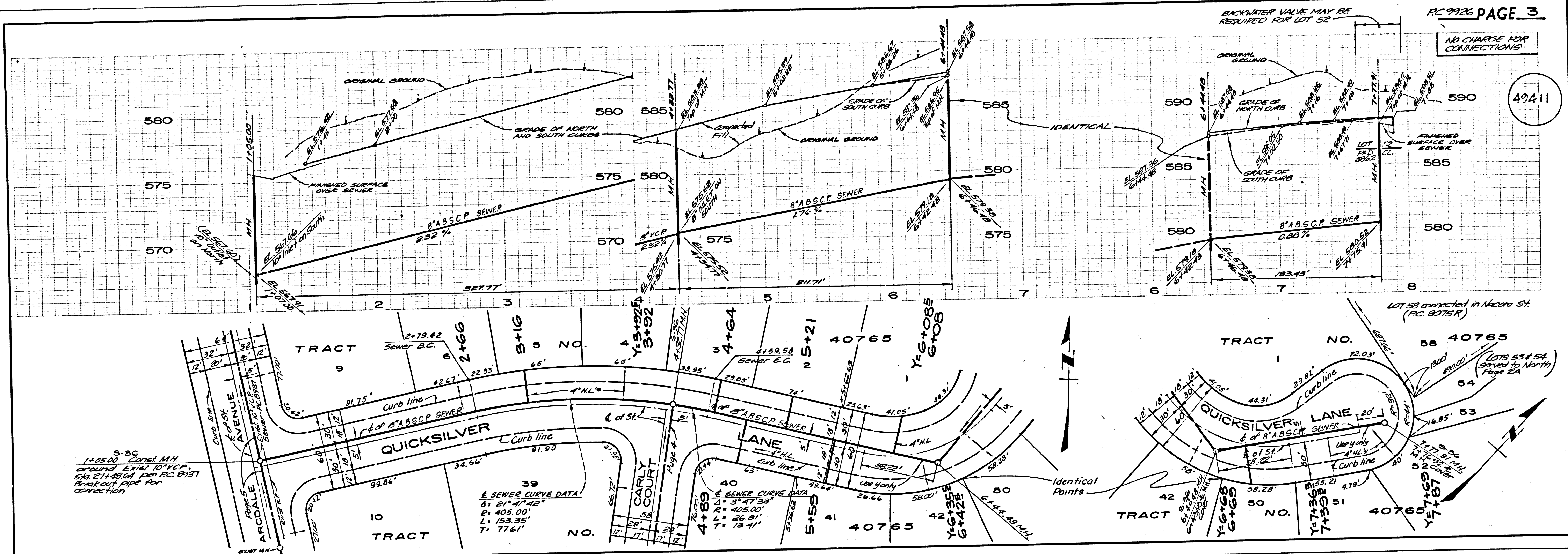
COUNTY OF LOS ANGELES, CALIFORNIA  
STEPHEN J. KOONCE, COUNTY ENGINEER WALTER E. GARRISON, CHIEF ENGINEER  
APPROVED *John W. Miller 4/1/81* APPROVED *Frank D. ... 4/1/81*  
CHECKED *Salah David ... 4/1/81*  
REG. C.E. NO. 16953  
LA PUENTE BLDG. DIST. 200

NO CONNECTION FOR THE DISPOSAL OF INDUSTRIAL WASTES SHALL BE MADE TO SEWERS SHOWN ON THESE DRAWINGS UNTIL A PERMIT FOR INDUSTRIAL WASTEWATER DISCHARGE HAS BEEN ISSUED BY THE SANITATION DISTRICTS FOR SAID CONNECTION.  
BEFORE BREAKING INTO OR CONSTRUCTION ON A COUNTY SANITATION DISTRICT SEWER AND PRIOR TO FINAL ACCEPTANCE OF THE PROJECT, SANITATION DISTRICT INSPECTOR SHALL BE NOTIFIED BY PHONE 962-8605, SO THAT REQUIRED INSPECTION CAN BE MADE.



49409

49410



6000 09

60704 ON T/CART

