

B.M. BY 9006 ELEV. 882.375
RDBM TAG IN S. CB. 2 FT. E/O
COR. AT S.E. COR. HAWAN RD. & THOUSAND
OAKS BLVD. #2 FT. S. & 73 FT. E/O & INT.
MALIBU QUAD. 1972.

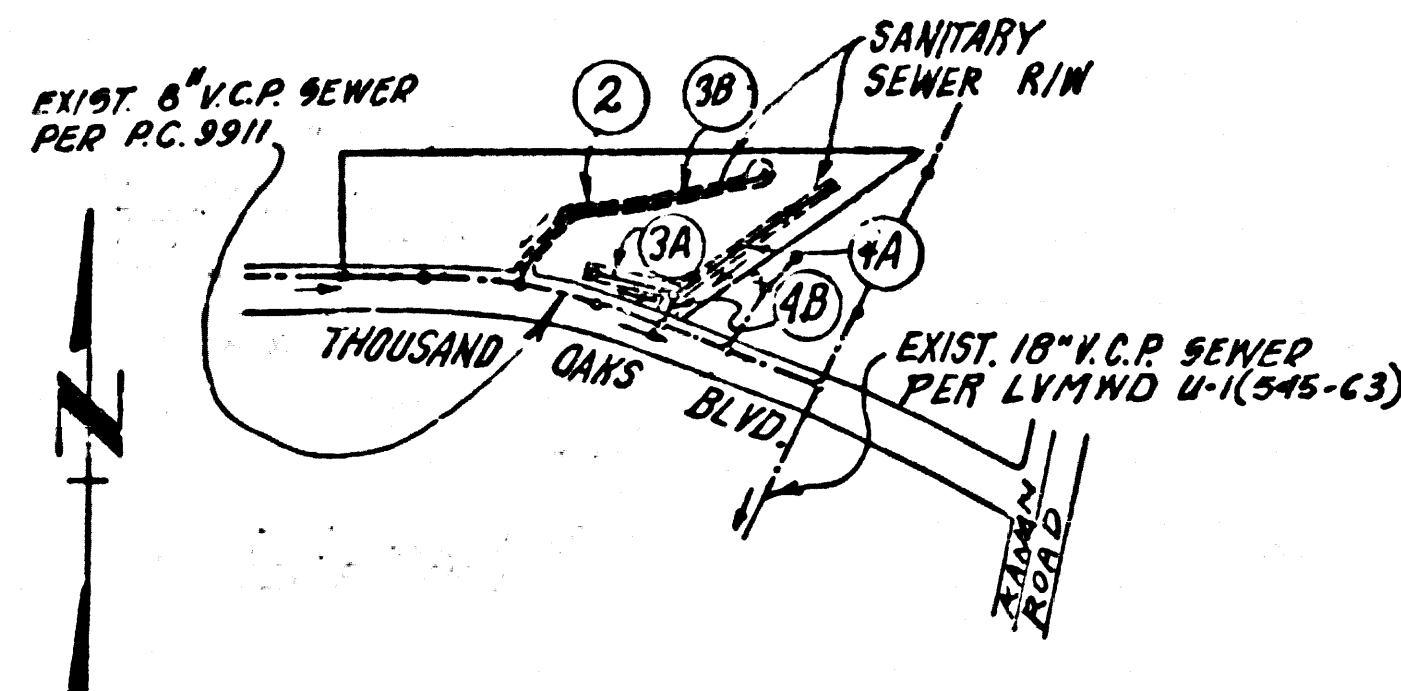
SPECIAL BACKFILL IN EASEMENT CONSTRUCTION: DOUBLE SCALE

- A. BACKFILL TRENCH AND REPLACE OTHER EARTH SO AS TO ACHIEVE THE NATURAL OR FINISHED GRADES AND SLOPES SHOWN ON THE GRADING PLAN APPROVED FOR THIS DEVELOPMENT BY THE BUILDING AND SAFETY DIVISION.
B. ALL BACKFILL AND EARTH REPLACED SHALL BE COMPACTED TO A MINIMUM OF 90% OF MAXIMUM DENSITY PER A.S.T.M. STD. METHOD OF TEST D698-57T AS MODIFIED. ACCEPTABLE CERTIFICATION OF SUCH COMPACTION SHALL BE SUBMITTED TO THE ENVIRONMENTAL DEVELOPMENT DIVISION.

- GENERAL NOTES:
1. ELEVATIONS ARE IN FEET ABOVE U.S.C. & G.S. SEA LEVEL DATUM OF 1929.
2. NO REVISIONS SHALL BE MADE IN THESE PLANS WITHOUT THE APPROVAL OF THE COUNTY ENGINEER.
3. NO REPRESENTATIVE OF THE COUNTY ENGINEER WILL SURVEY OR LAY OUT ANY PORTION OF THE WORK.
4. GRADES TO WHICH THE IMPROVEMENT IS TO BE CONSTRUCTED ARE SHOWN ON PLANS AND PROFILES. GRADE POINTS FOR TOP OF CURBS, CENTER LINE OF STREETS, OR CENTER LINE OF ALLEYS ARE SHOWN BY CIRCLES IN PROFILES AT ALL POINTS BETWEEN DESIGNATED POINTS THE GRADE SHALL BE ESTABLISHED SO AS TO CONFORM TO A STRAIGHT LINE DRAWN BETWEEN SAID DESIGNATED POINTS.
5. THE PRIVATE ENGINEER SHALL FURNISH THE COUNTY ENGINEER WITH GRADE SHEETS, NO STATIONING FOR ALL HOUSE LATERALS AND "T" OR "T" BRANCHES AND SHALL PROVIDE STAKES FOR THEM AT THEIR PROPER LOCATIONS WITH STATIONING PLAINLY MARKED. ALL HOUSE LATERALS SHALL BE CONSTRUCTED IN A STRAIGHT ALIGNMENT AT RIGHT ANGLES FROM THE MAIN LINE SEWER EXCEPT AS SHOWN ON THE PLANS. HOUSE LATERALS FROM CHIMNEYS SHALL NOT HAVE AN ANGLE OF LESS THAN 45° WITH THE MAIN LINE SEWER. ANY CHANGE IN ALIGNMENT SHALL BE REQUESTED IN WRITING BY THE PRIVATE ENGINEER.
6. THE PRIVATE ENGINEER SHALL FURNISH THE HOUSE LATERAL DEPTH AT THE PROPERTY LINE BELOW THE TOP OF CURB ELEVATION FOR EACH HOUSE LATERAL ON THE GRADE SHEET.
7. BEFORE WORK CAN BE STARTED, THE CONTRACTOR MUST OBTAIN A PERMIT TO EXCAVATE, IN COUNTY STREETS FROM THE L.A. COUNTY ROAD DEPT., DISTRICT OFFICE NO. 3, AND PAY A FEE TO THE COUNTY ENGINEER, 550 S. VERMONT AVENUE, ROOM 400, TO COVER THE COST OF CONSTRUCTION INSPECTION AND RECORD PLANS.
8. IF WORK IS TO BE DONE IN A STATE HIGHWAY, A PERMIT MUST BE OBTAINED FROM THE STATE OF CALIFORNIA, DIVISION OF HIGHWAYS, 120 SOUTH SPRING STREET, LOS ANGELES, CALIFORNIA.
9. APPROVAL OF THIS PLAN BY THE COUNTY OF LOS ANGELES DOES NOT CONSTITUTE A REPRESENTATION AS TO THE ACCURACY OF THE LOCATION OF OR THE EXISTENCE OR NON-EXISTENCE OF ANY UNDERGROUND UTILITY PIPE, OR STRUCTURE WITHIN THE LIMITS OF THIS PROJECT. THIS NOTE APPLIES TO ALL PAGES.
10. PRIOR TO THE ISSUANCE OF THE REQUIRED SEWER CONSTRUCTION PERMIT THE CONTRACTOR SHALL OBTAIN AND FILE WITH THE COUNTY ENGINEER COPIES OF A PERMIT TO EXCAVATE, IN COUNTY STREETS FROM THE LOS ANGELES COUNTY ROAD DEPARTMENT, A PERMIT FOR EXCAVATIONS AND TRENCHES FROM THE STATE OF CALIFORNIA DIVISION OF INDUSTRIAL SAFETY AND A CERTIFICATE OF WORKERS COMPENSATION INSURANCE WITH THE DEPT. OF COUNTY ENGINEER, 550 S. VERMONT, LOS ANGELES, CALIF. 90020, NAMED AS THE CERTIFICATE HOLDER TO BE NOTIFIED 30 DAYS PRIOR TO CANCELLATION OF POLICY.
11. REFER TO SECTION 7-10.4.1 OF THE STANDARD SPECIFICATIONS, REGARDING SAFETY DEVICES.

TRACT NO. 36303
PRIVATE CONTRACT NO. 9930
INDEX 168 5057
W.S. 90
2 SHEETS, 4 PAGES

SCALE: VERT. 1"=6' JAN, 1981
HORIZ. 1"=40'
PREPARED IN THE OFFICES OF
SIXARD ENGINEERING ASSOCIATES
19230 BURBANK BLVD. VAN NUYS, CA. 91411
BY: [Signature]
REG. C. E. NO. 9812



INDEX MAP
P.C. 9930, TR. NO. 36303
SCALE 1"=600'

CONSTRUCTION NOTES CONT'D:

- 15. FULL COMPLIANCE WITH PART III OF THE SPECIAL PROVISIONS IS REQUIRED FOR THE INSTALLATION OF A.B.S. COMPOSITE PIPE.
16. MANHOLE WATER STOP GASKETS AND CLAMPS ARE REQUIRED FOR THE CONNECTION OF A.B.S. COMPOSITE PIPE TO MANHOLE STRUCTURES.
17. A.B.S. SOLID WALL PIPE MUST BE USED FOR WYE AND HOUSE LATERAL CONNECTIONS TO A.B.S. COMPOSITE MAINLINE SEWER PIPE.
18. A.B.S. COMPOSITE PIPE SHALL BE BEDDED IN CONFORMANCE WITH THE TABLE IN SECTION 8-3.1 OF PART III OF THE SPECIAL PROVISIONS.
19. 3-DEGREE DEFLECTION COUPLERS SHOULD BE USED TO ACCOMPLISH RADIUS OF CURVATURE LESS THAN 360'.

ISSUE NO HOUSE CONNECTION PERMITS UNTIL OUTLET SEWER PRIVATE CONTRACT 9911 IS ACCEPTED BY THE COUNTY OF LOS ANGELES

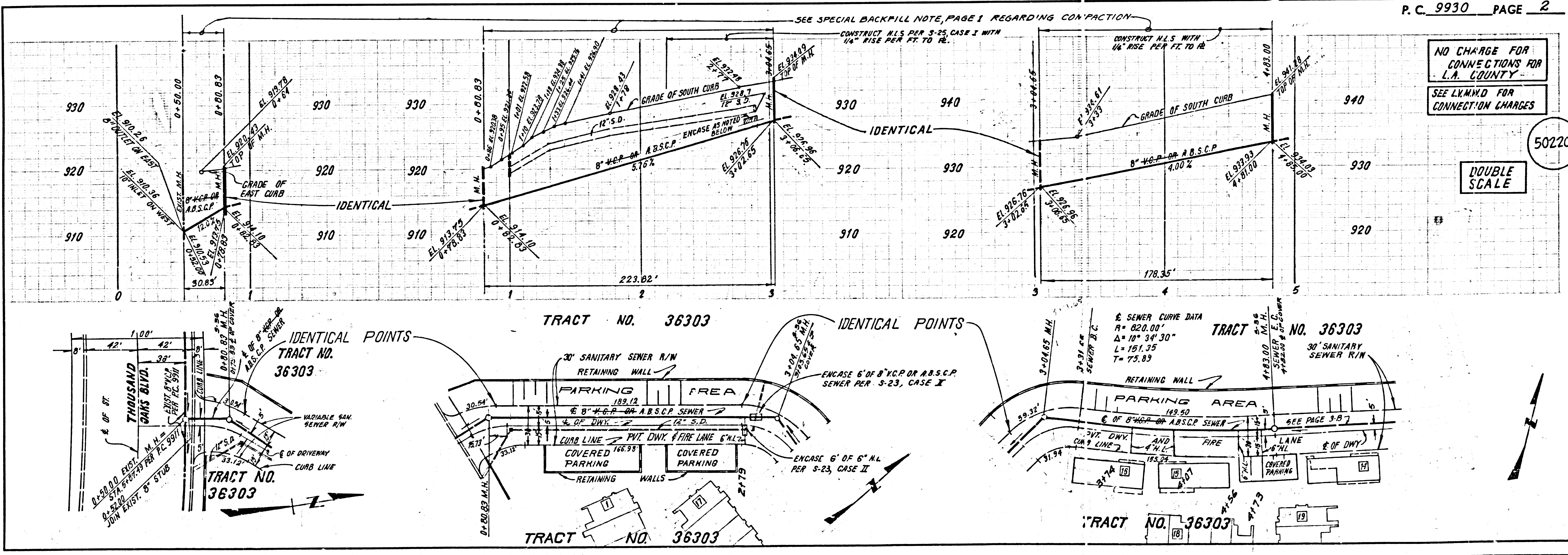
REVISION NO. 1
Revised Plan and Profile on pages 2, 3 and 4.
APPROVED [Signature] 7/25/83 16883
OFFICE OF COUNTY ENGINEER R.C.E. NO.

ISSUE NO HOUSE CONNECTION PERMITS UNTIL SEWER EASEMENTS ARE CLEARED.

LEGEND

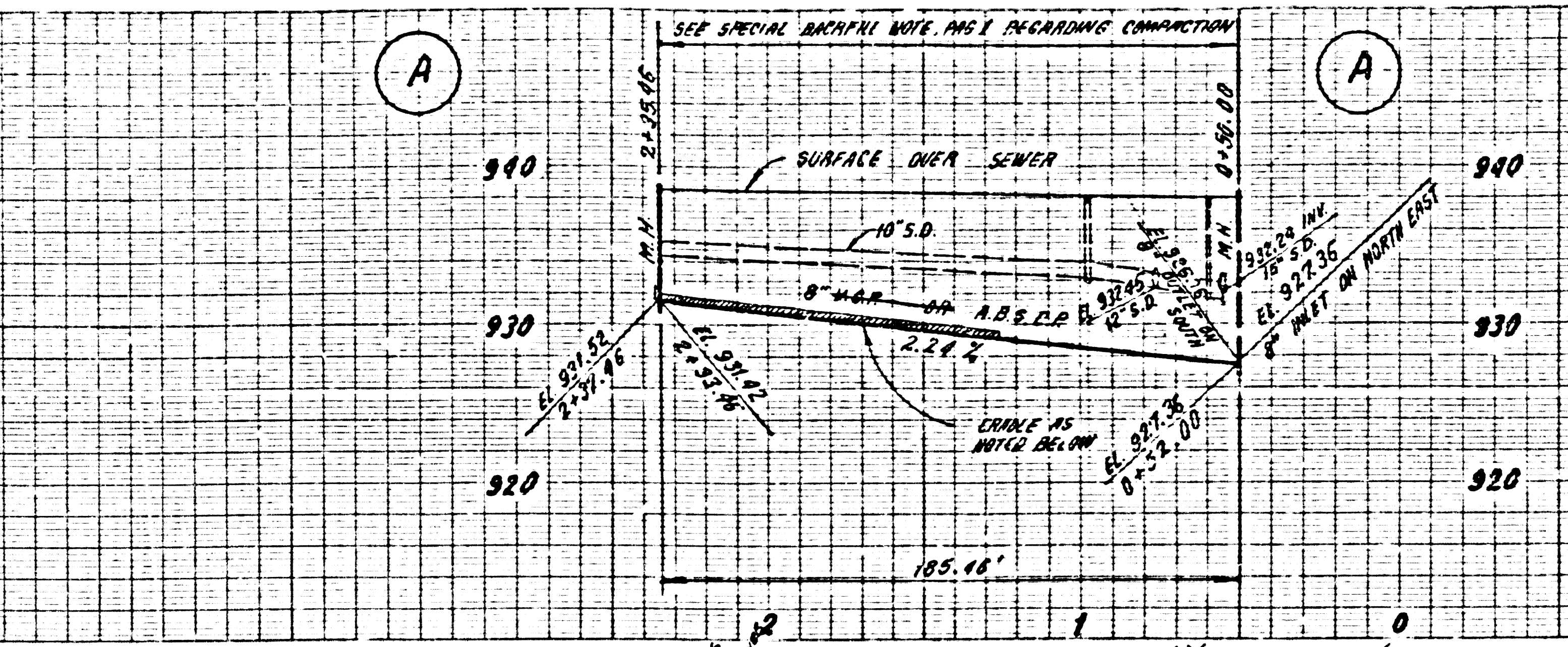
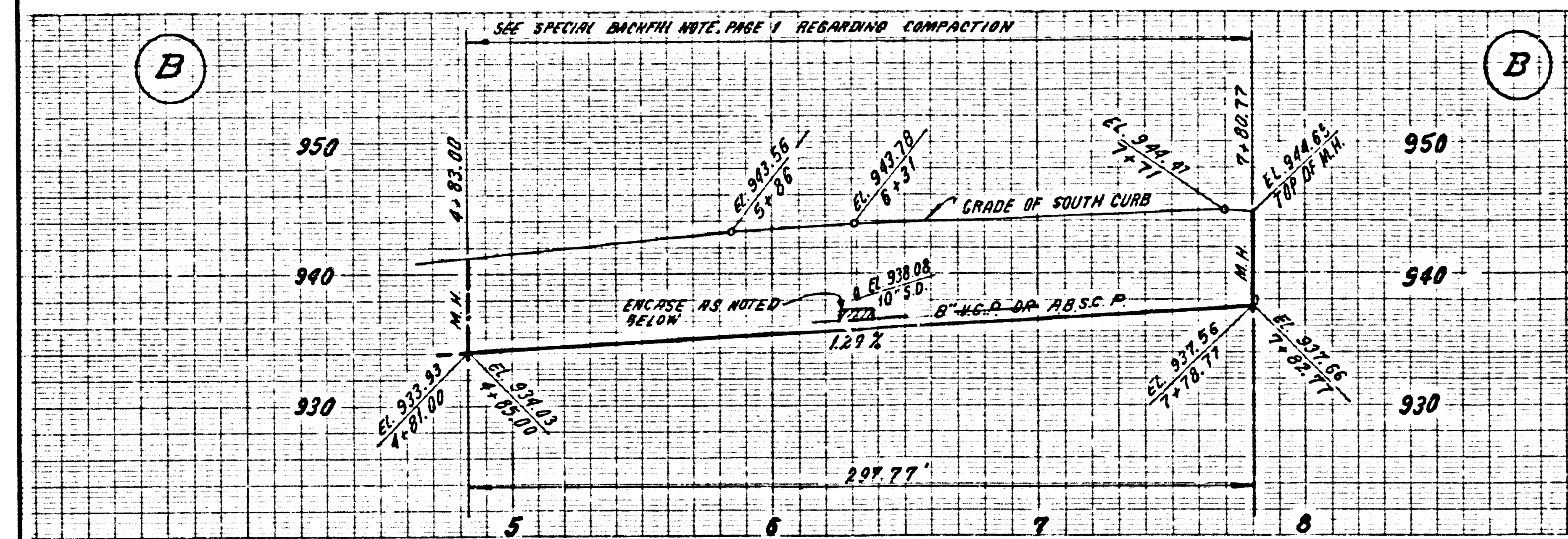
MINIMUM PUBLIC SAFETY REQUIREMENTS	5.1
BRICK MANHOLE	5.2
STANDARD MANHOLE STEP	5.17
BEDDING FOR SEWER PIPE	5.21
CALLING AND ENCASEMENT	5.22
WYE OR TEE SUPPORT	5.26
ALLOWABLE TRENCH WIDTHS	5.28
LOCKING MANHOLE FRAME AND COVER	5.30
NON-REINFORCED PRECAST CONCRETE MANHOLE	5.36
ANCHOR BLOCK	5.38
EROSION PROTECTION IN STEEP SLOPES	5.31

COUNTY OF LOS ANGELES, CALIFORNIA
STEPHEN I. WONG, COUNTY ENGINEER LAS VIRGENES MUNICIPAL WATER DISTRICT
APPROVED [Signature] 7-24-81 APPROVED [Signature] 7/1/81
DATE DATE
CHECKED [Signature] 7/20/81
REG. C.E. NO. 16883
CALIFORNIA BLDG. DIST. 91



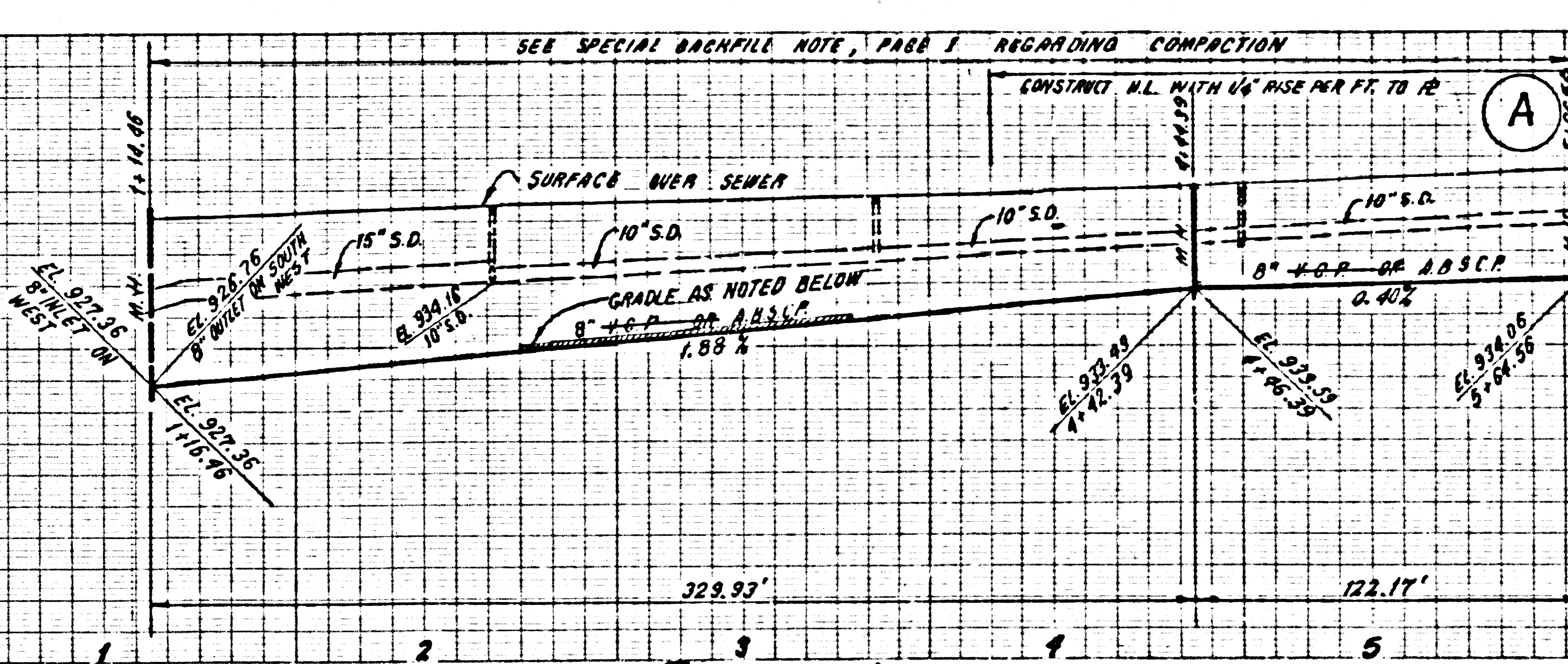
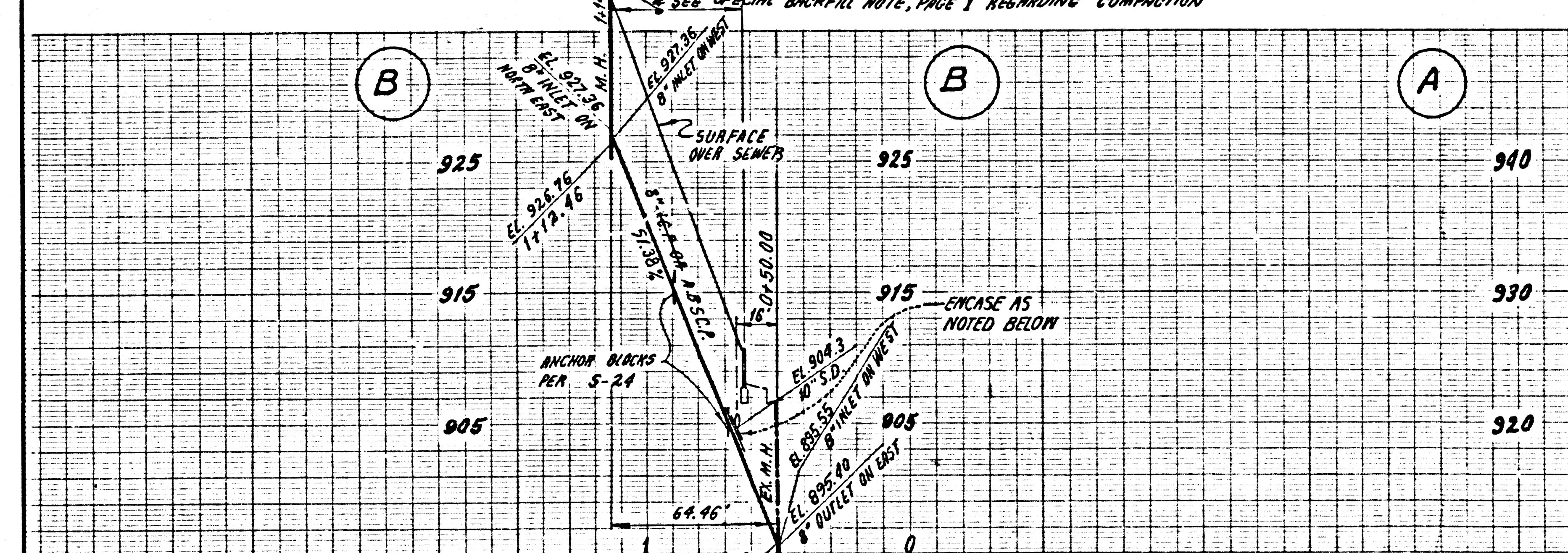
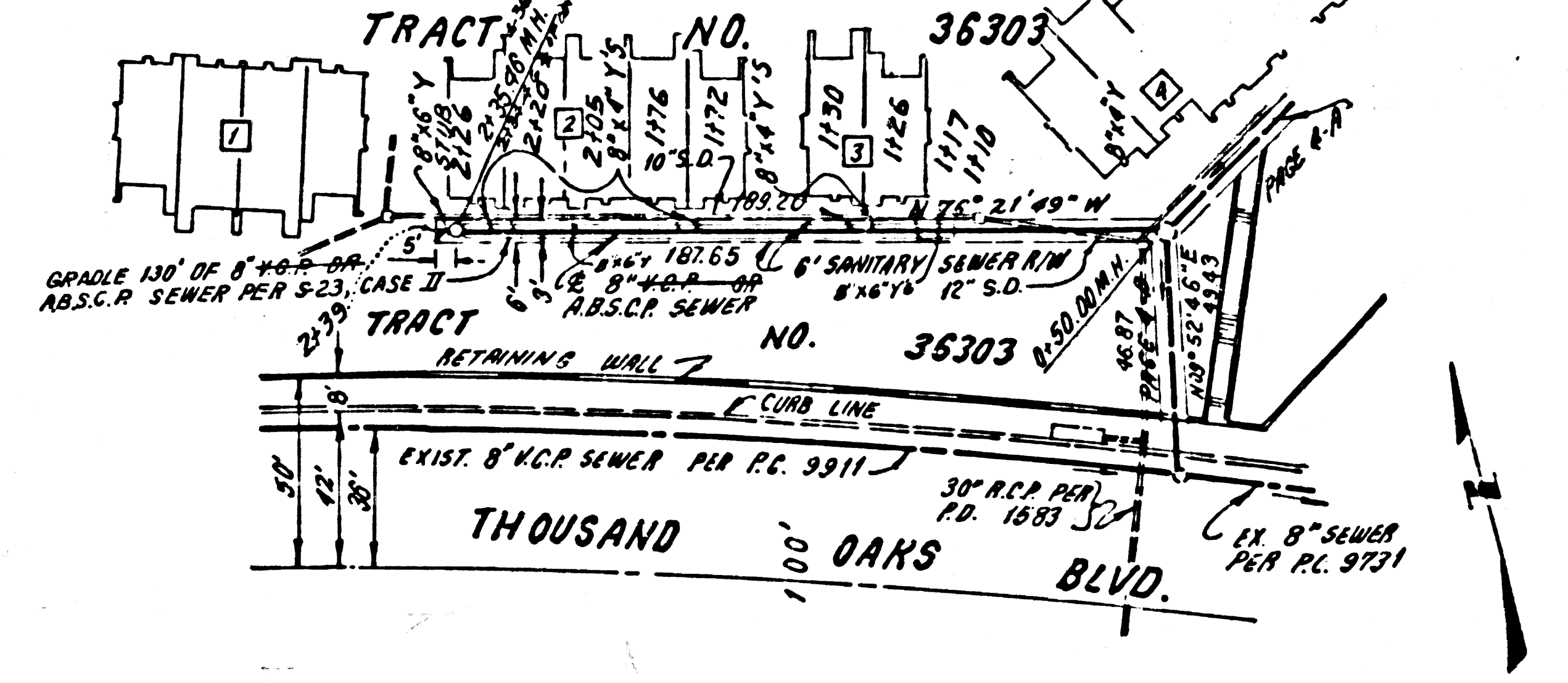
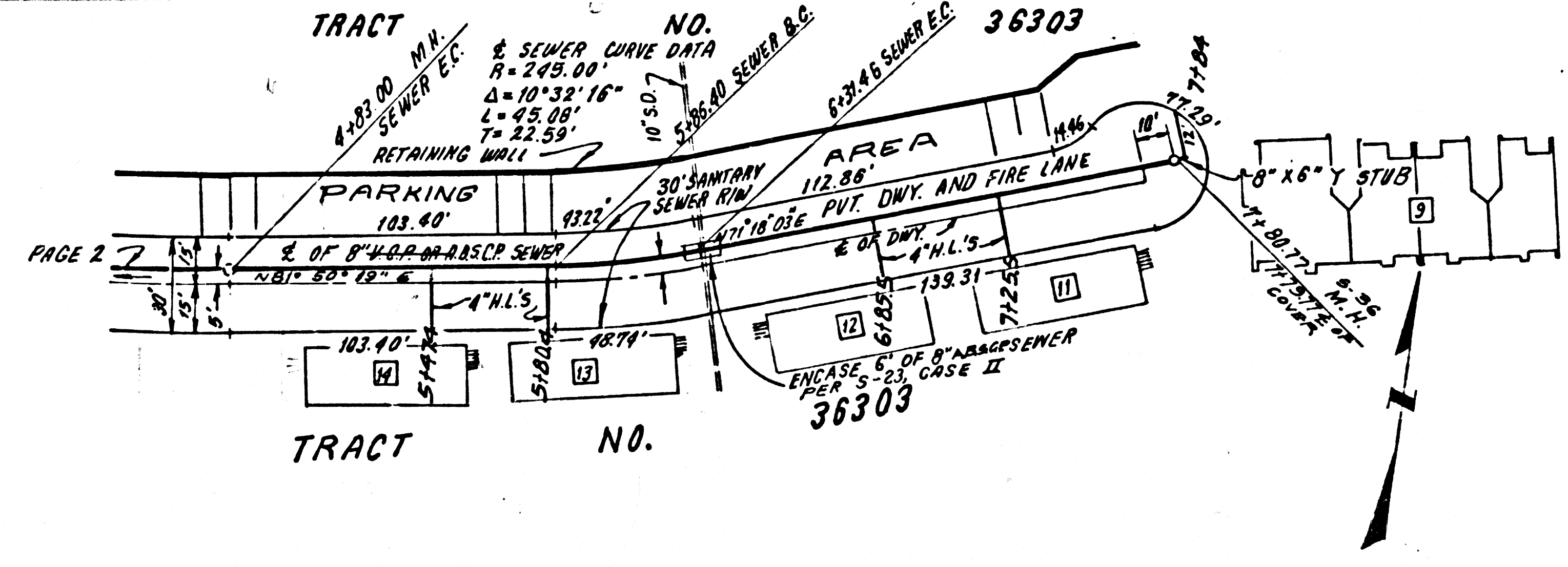
NO CHARGE FOR CONNECTIONS FOR L.A. COUNTY - SEE L.A.M.W.D. FOR CONNECTION CHARGES

DOUBLE SCALE



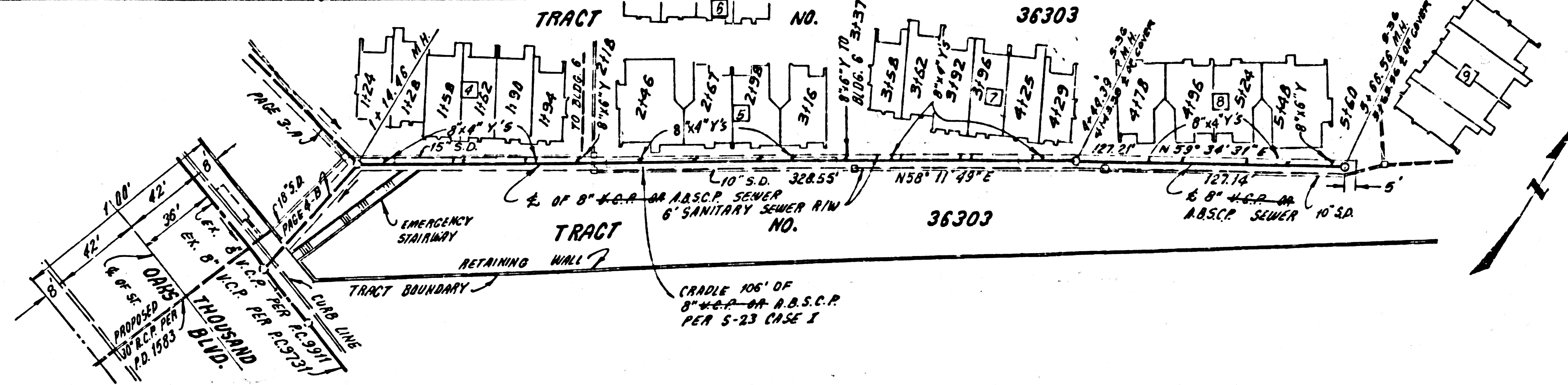
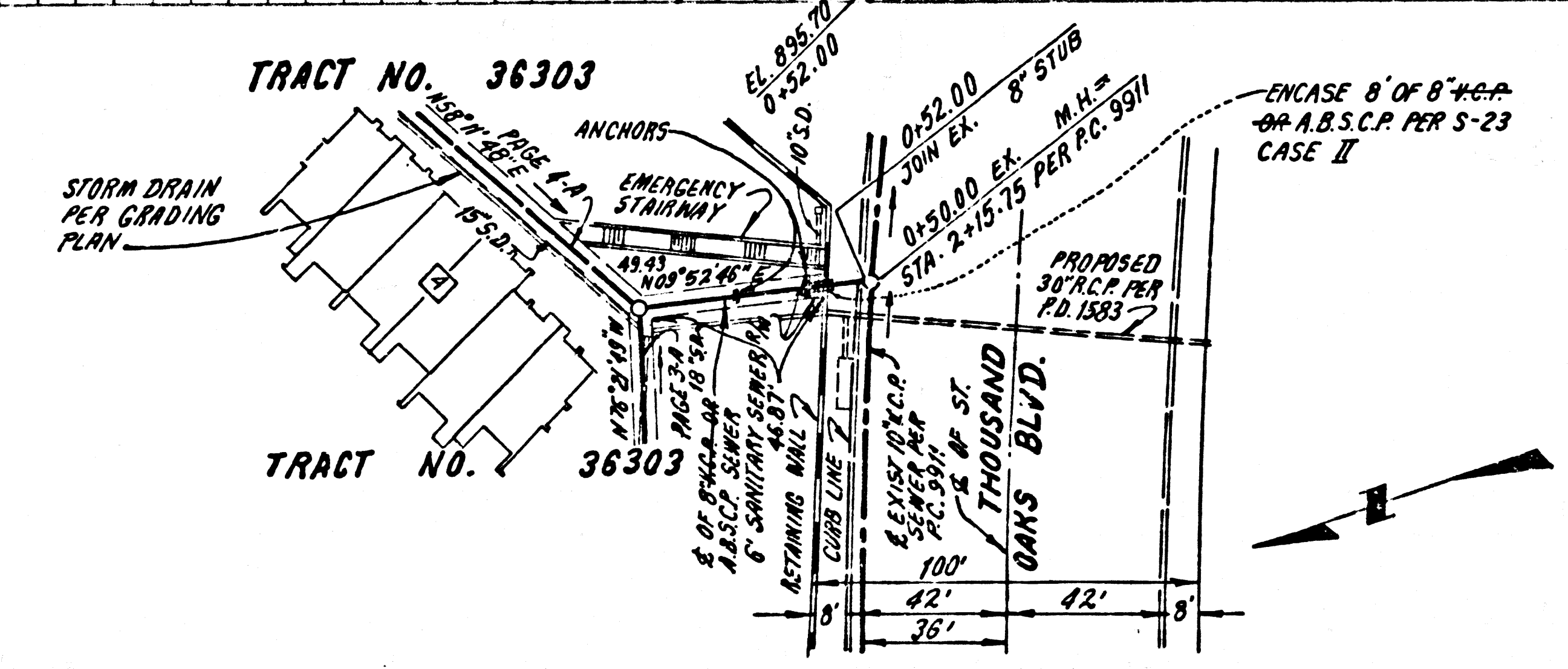
DOUBLE SCALE
 NO CHARGE FOR CONNECTIONS FOR L.A. COUNTY
 SEE I.N.M.D. FOR CONNECTION CHARGES

50221



DOUBLE SCALE
 NO CHARGE FOR CONNECTIONS FOR L.A. CO.
 SEE I.N.M.D. FOR CONNECTION CHARGES

50222



50221 50222