

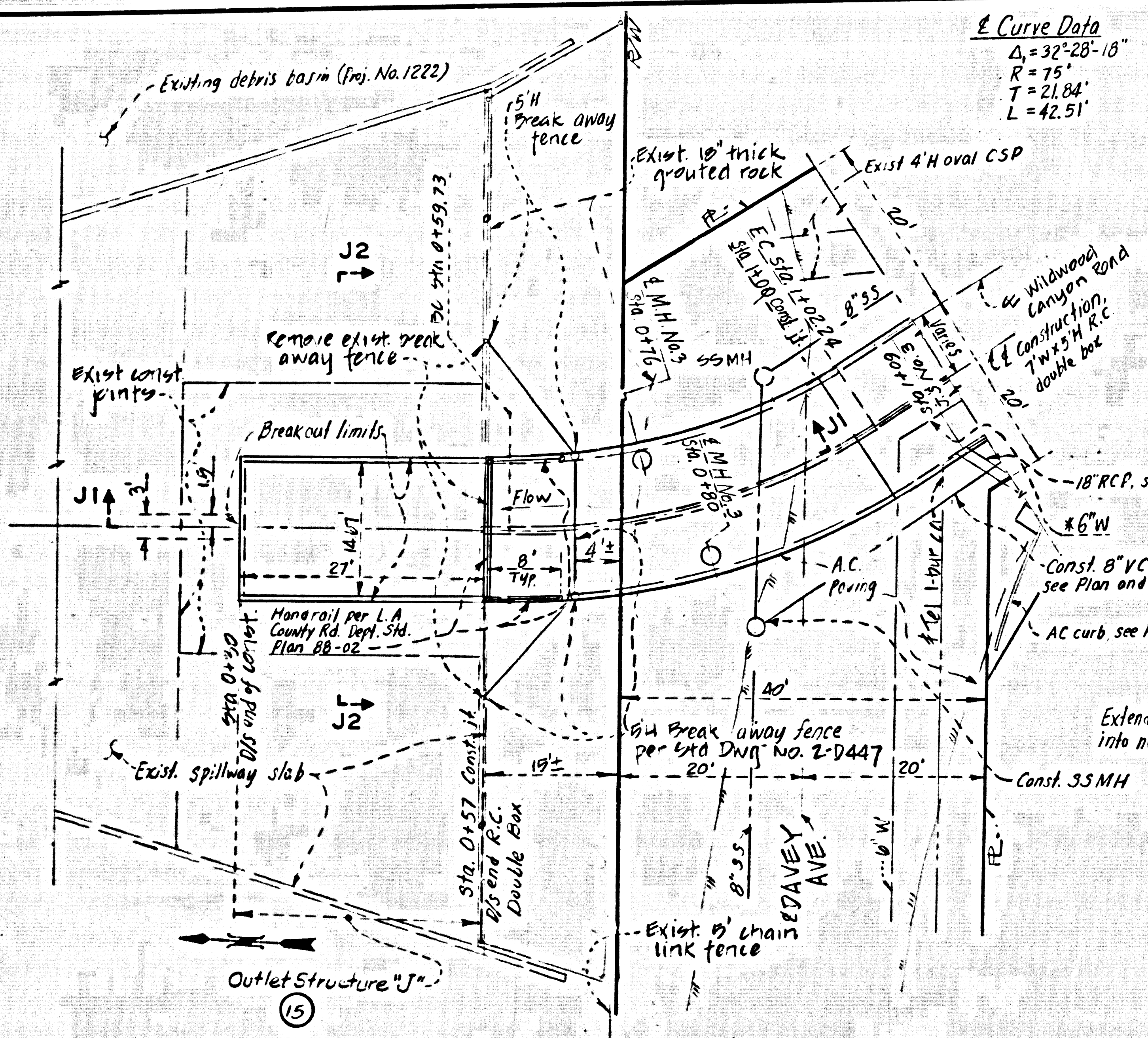
REVISIONS		
NO.	DATE	DESCRIPTION

PLAN
SCALE: 1" = 40'

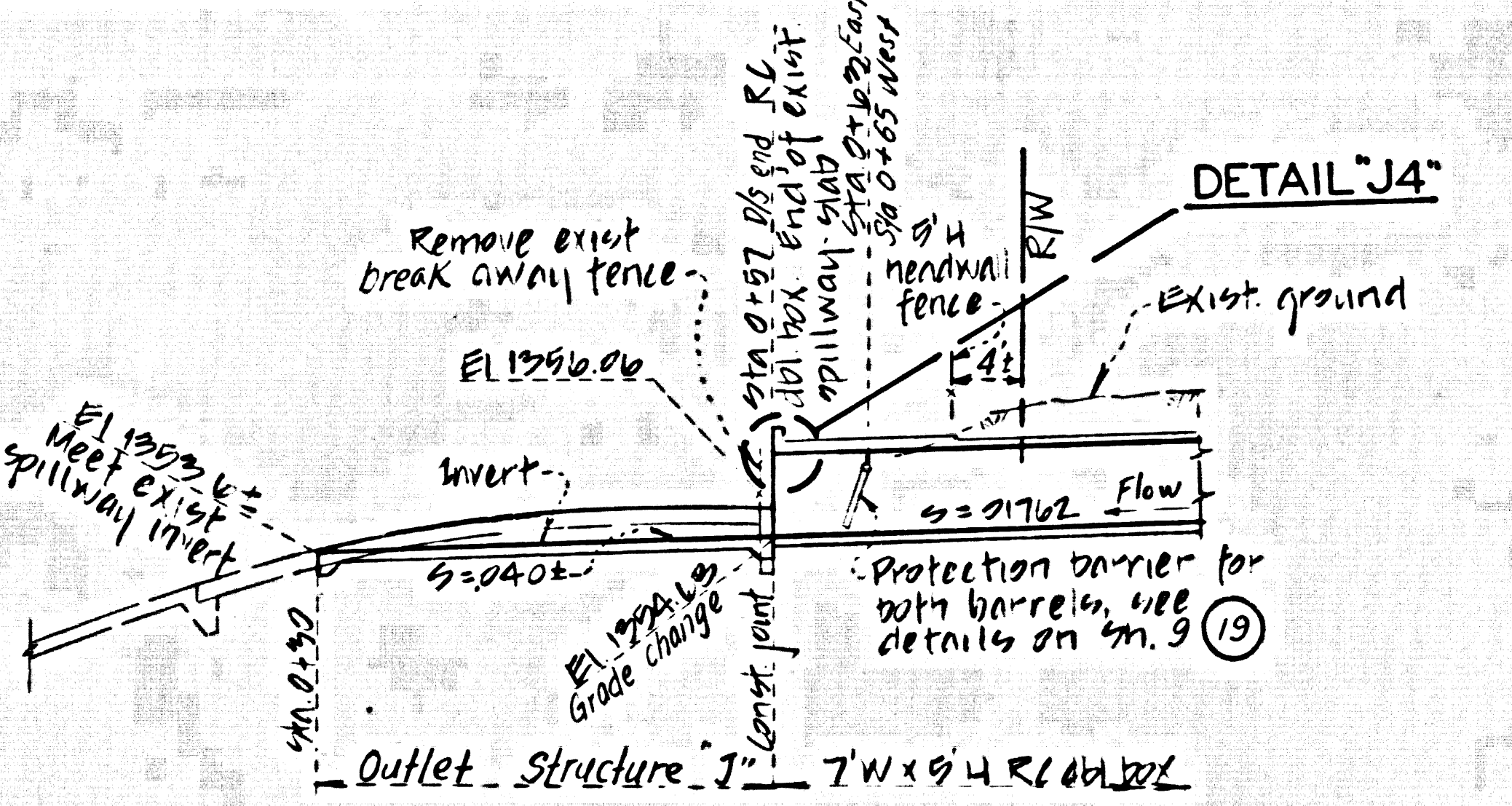
Note:
Typical Sections shown on Sh. 4.

DESIGNED BY W. Saruwatari	1970 STORM DRAIN BOND ISSUE	
CHECKED BY J.D. Halverson	LOS ANGELES COUNTY FLOOD CONTROL DISTRICT	
DRAWN BY C. Hart	PROJECT 9101 WILDWOOD	
PROJECT ENGINEER	REF. P.C. 9940	DATE Mar. '80
	PLAN AND PROFILE STA. 0+30 TO STA. 10+12	SCALE AS SHOWN
		NO. 407-9101-DI.2
		SHEET 2 OF 10

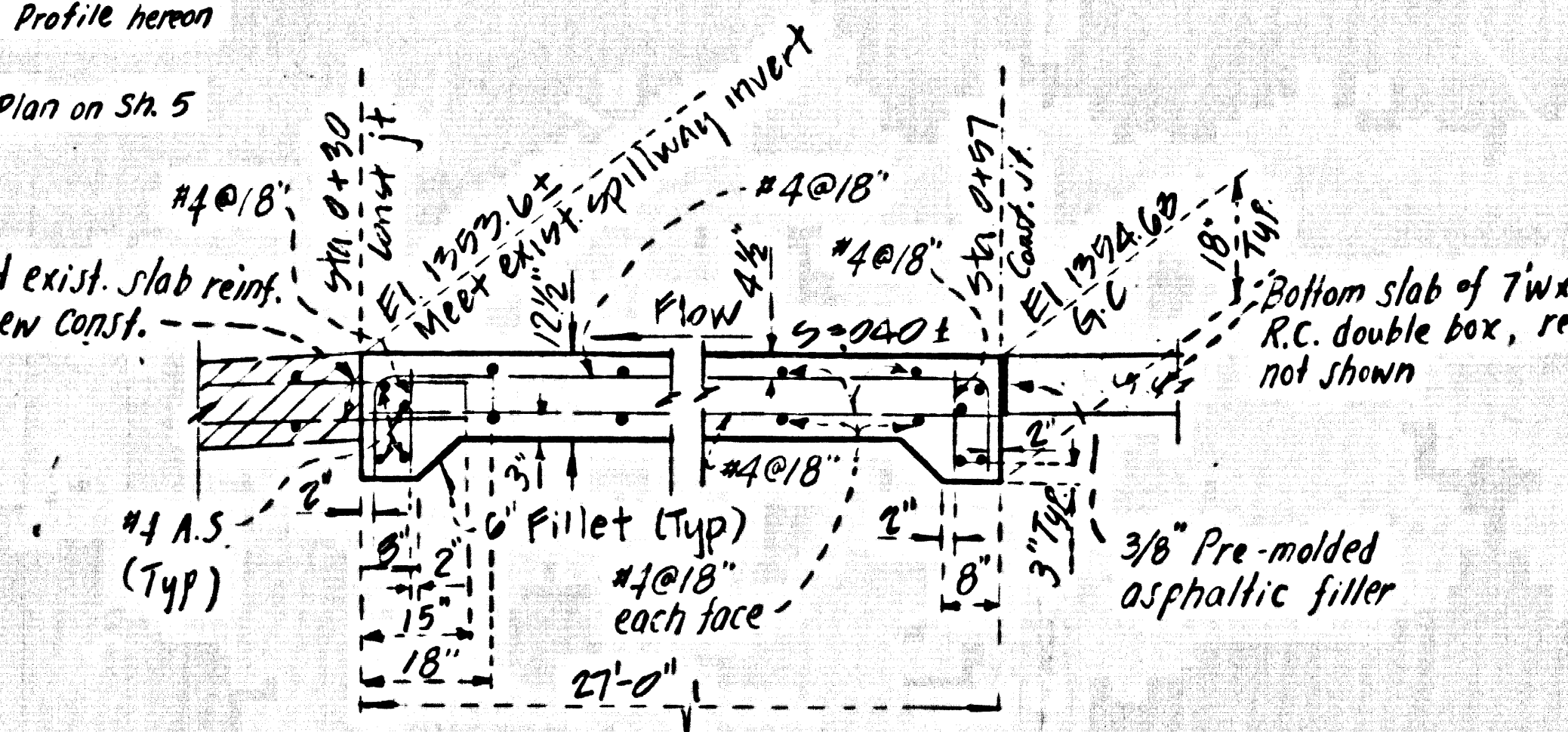
48170



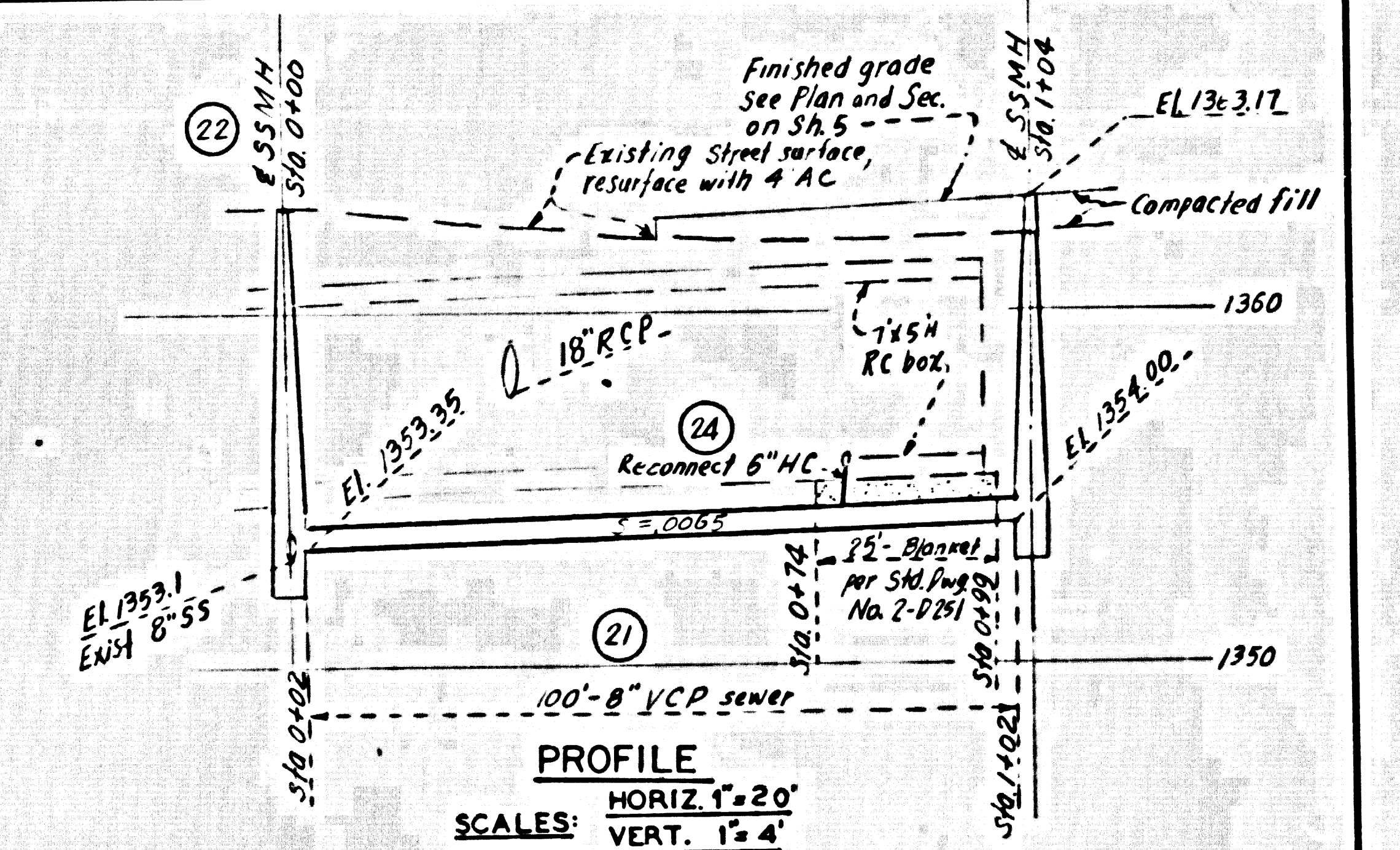
Curve Data
 $\Delta = 32^{\circ}28'18''$
 $R = 75'$
 $T = 21.84'$
 $L = 42.51'$



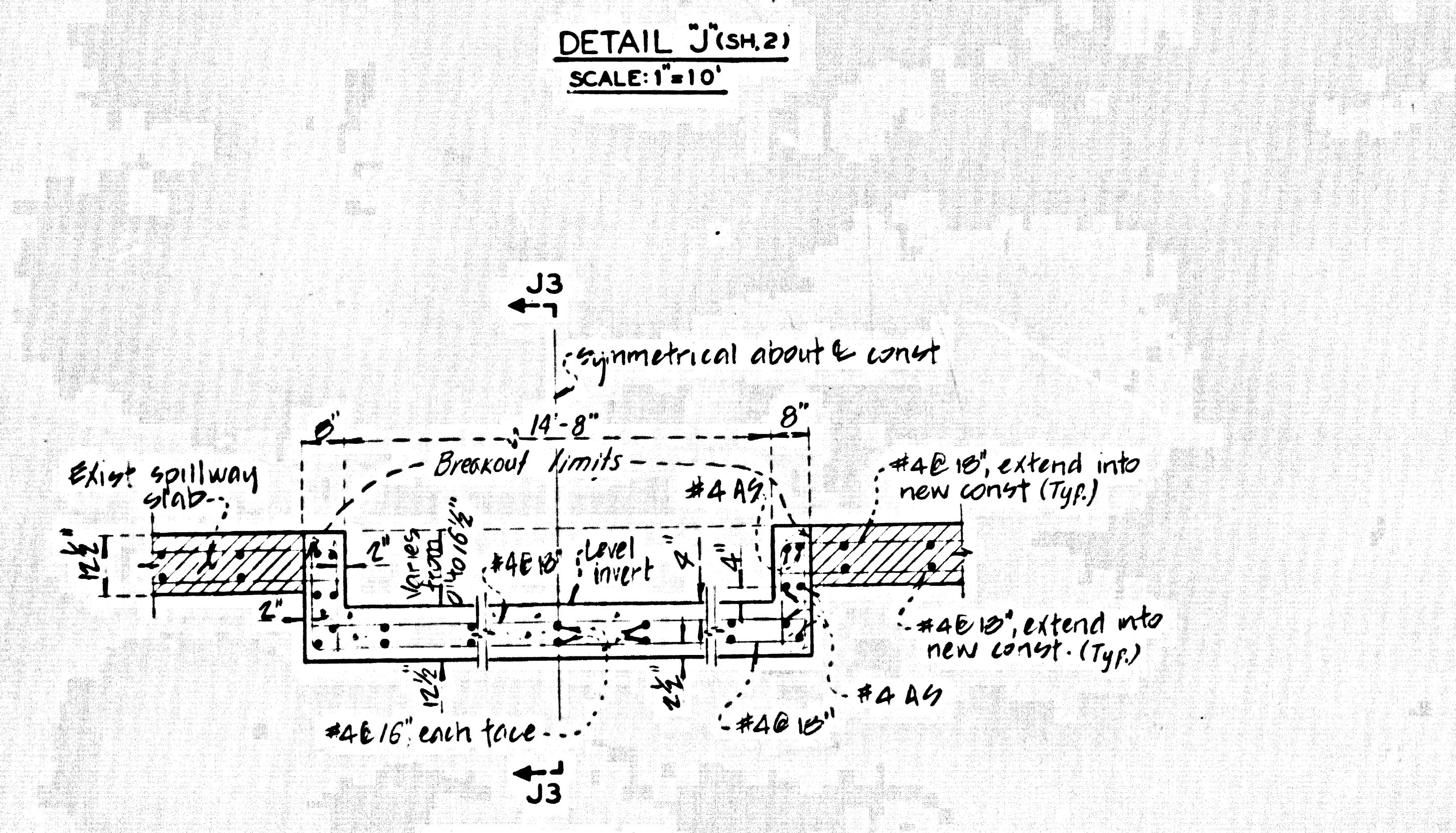
SECTION J1-J1
 SCALE: 1" = 10'



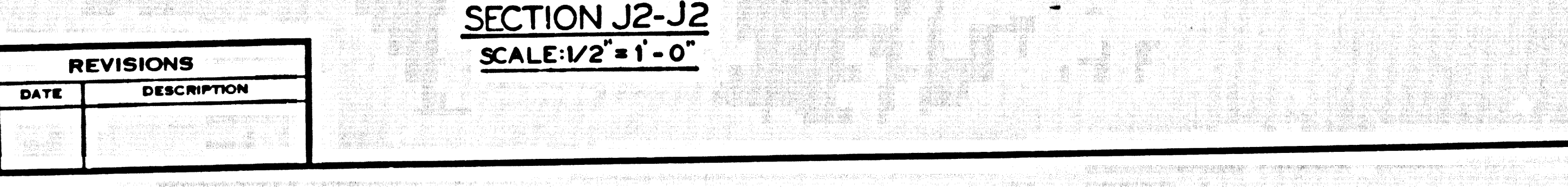
SECTION J3-J3
 SCALE: 1/2" = 1'-0"



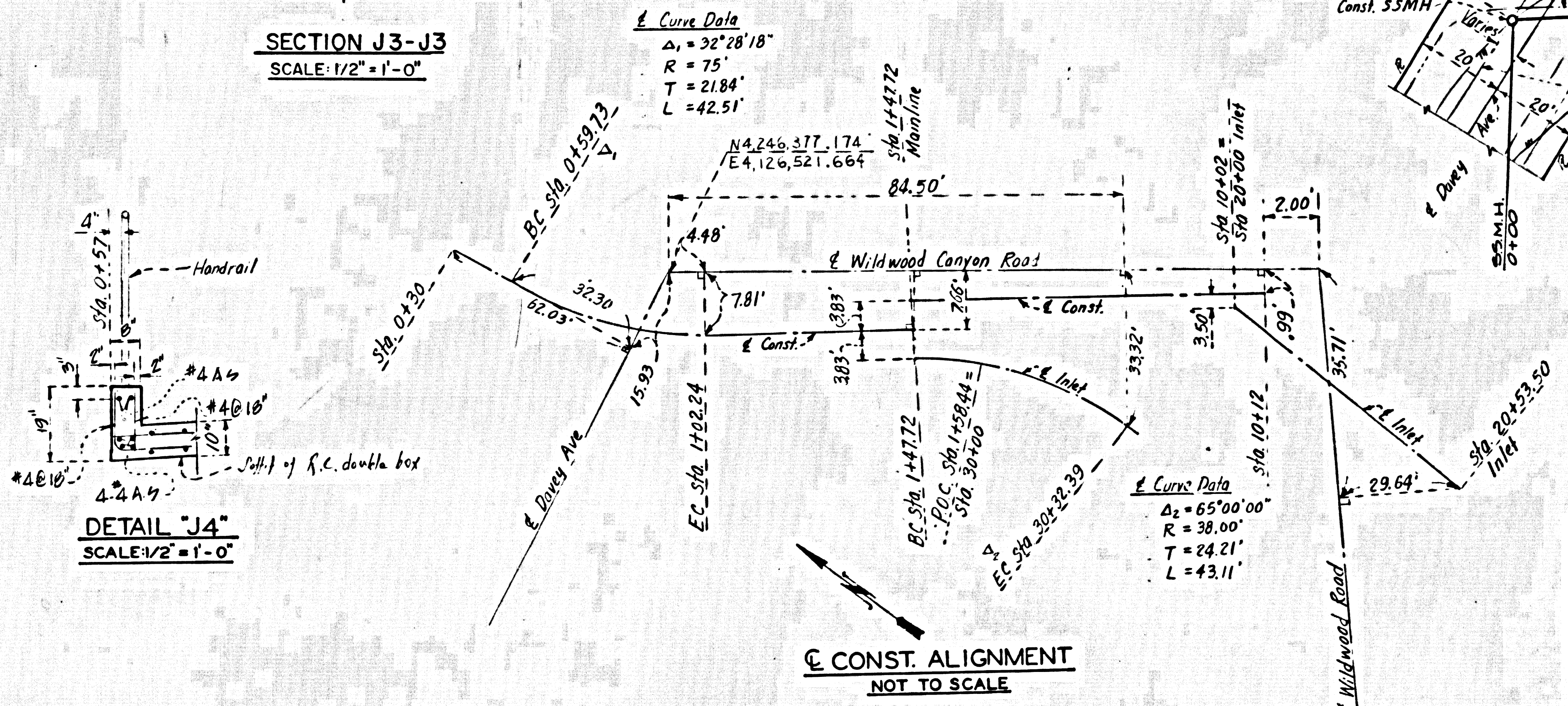
PROFILE
 HORIZ. 1" = 20'
 VERT. 1" = 4'



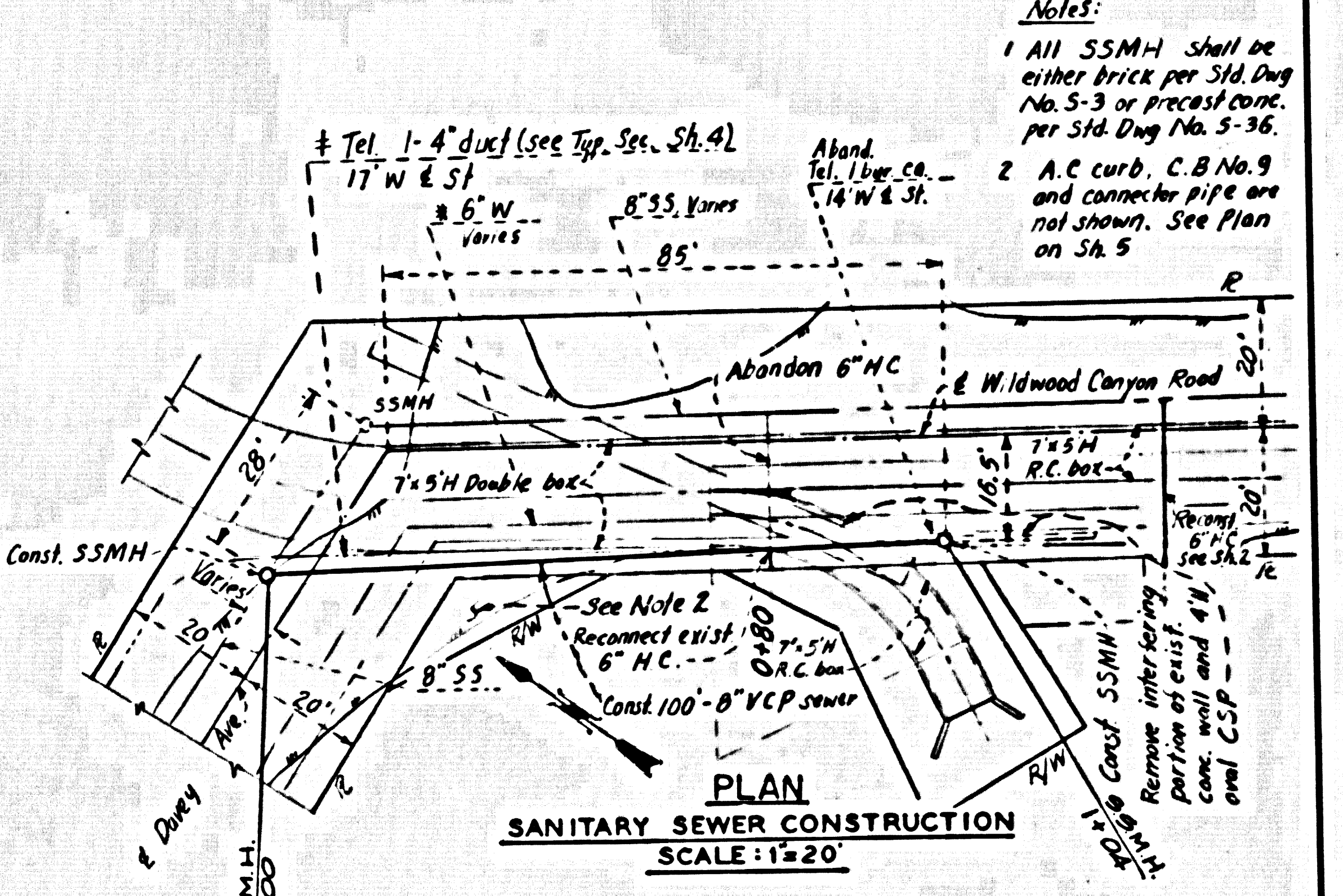
DETAIL 'J' (SH. 2)
 SCALE: 1" = 10'



SECTION J2-J2
 SCALE: 1/2" = 1'-0"



CONST. ALIGNMENT
 NOT TO SCALE



PLAN
 SANITARY SEWER CONSTRUCTION
 SCALE: 1" = 20'

- Notes:
- All S5MH shall be either brick per Std. Dig. No. 5-3 or precast conc. per Std. Dig. No. 5-36.
 - A.C. curb, C.B. No. 9 and connect. pipe are not shown. See Plan on Sh. 5.

REVISIONS		
NO.	DATE	DESCRIPTION

DESIGNED BY W. Saruwatari		1970 STORM DRAIN BOND ISSUE	
CHECKED BY J.D. Halverson		LOS ANGELES COUNTY FLOOD CONTROL DISTRICT	
DRAWN BY C. Hart		PROJECT 9101	
PROJECT ENGINEER		WILDWOOD	
RECOMMENDED BY		REF. P.C. 9940	
DATE Mar. '80		SCALE AS SHOWN	
NO. 470-9101-D1.3		SHEET 3 OF 10	

48171