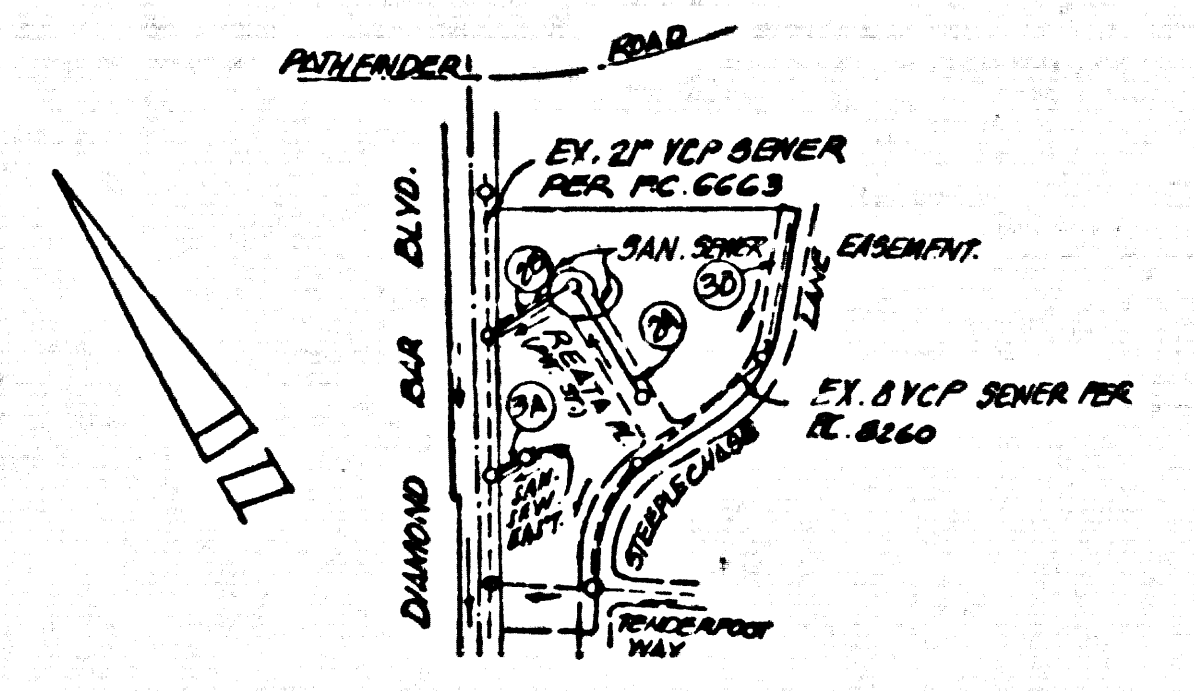


B.M. CG. 2100 ELEV. 772.380
 RD. B.M. TAG IN CONC. HDWL. 1 FT. 5/0
 N. END NR. INT. DIAMOND BAR BLVD AND
 PATHFINDER NO. 224 FT. NLY. G.O.P. ELY. 4 INT.
 QUAD. 19 75



INDEX MAP
 P.C. 9944 - TRACT NO. 33537
 SCALE 1" = 600'

NO CONNECTION FOR THE DISPOSAL OF INDUSTRIAL WASTES SHALL BE MADE TO SEWERS SHOWN ON THESE DRAWINGS UNTIL A PERMIT FOR INDUSTRIAL WASTEWATER DISCHARGE HAS BEEN ISSUED BY THE SANITATION DISTRICTS FOR SAID CONNECTION.

BEFORE BREAKING INTO OR CONSTRUCTION ON A COUNTY SANITATION DISTRICT SEWER AND PRIOR TO FINAL ACCEPTANCE OF THE PROJECT, SANITATION DISTRICT INSPECTOR SHALL BE NOTIFIED BY PHONE - 962-8805, 938-3347 SO THAT REQUIRED INSPECTION CAN BE MADE.

NOTE 1:
 LOT 1 CONNECTS TO EXIST. SEWER, P.C. 82 GO, AT PAGE 16.

NOTE: NUMBERS IN CIRCLES INDICATE PAGE NUMBERS

- GENERAL NOTES:**
1. REVISIONS ARE IN PINK ABOVE U.S.C. & G.S. SEA LEVEL DATUM OF 1929.
 2. NO REVISIONS SHALL BE MADE IN THESE PLANS WITHOUT THE APPROVAL OF THE COUNTY ENGINEER.
 3. NO REPRESENTATIVE OF THE COUNTY ENGINEER WILL SURVEY OR LAY OUT ANY PORTION OF THE WORK.
 4. GRADES TO WHICH THIS IMPROVEMENT IS TO BE CONSTRUCTED ARE SHOWN ON PLANS AND PROFILES. GRADE POINTS FOR TOP OF CURB, CENTER LINE OF STREETS, OR CENTER LINE OF ALLEYS ARE SHOWN BY CIRCLES ON PROFILES. AT ALL POINTS BETWEEN DESIGNATED POINTS THE GRADE SHALL BE ESTABLISHED SO AS TO CONFORM TO A STRAIGHT LINE DRAWN BETWEEN SAID DESIGNATED POINTS.
 5. THE PRIVATE ENGINEER SHALL FURNISH THE COUNTY ENGINEER WITH GRADE SHEETS AND STATIONING FOR ALL HOUSE LATERALS AND "T" OR "Y" BRANCHES AND SHALL PROVIDE 5' STAKES FOR THEM AT THEIR PROPER LOCATIONS WITH STATIONING NUMBER MARKED. ALL HOUSE LATERALS SHALL BE CONSTRUCTED IN A STRAIGHT ALIGNMENT AT RIGHT ANGLES FROM THE MAIN LINE SEWER EXCEPT AS SHOWN ON THE PLANS. HOUSE LATERALS FROM COMBUSTIBLES SHALL NOT HAVE AN ANGLE OF LESS THAN 45° WITH THE MAIN LINE SEWER. ANY CHANGE IN ALIGNMENT SHALL BE REQUESTED IN WRITING BY THE PRIVATE ENGINEER.
 6. THE PRIVATE ENGINEER SHALL FURNISH THE HOUSE LATERAL DEPTH AT THE PROPERTY LINE BELOW THE TOP OF CURB ELEVATION FOR EACH HOUSE LATERAL ON THE GRADE SHEET.
 7. BEFORE WORK CAN BE STARTED, THE CONTRACTOR MUST OBTAIN A PERMIT TO RELOCATE IN COUNTY STREETS FROM THE L.A. COUNTY ROAD DEPT., DISTRICT OFFICE NO. 1 AND PAY A FEE TO THE COUNTY ENGINEER, 201 E. CONITA AVE. SAN DIMAS REGIONAL OFFICE, TO COVER THE COST OF CONSTRUCTION INSPECTION AND RECORD PLANS.
 8. IF WORK IS TO BE DONE IN A STATE HIGHWAY, A PERMIT MUST BE OBTAINED FROM THE STATE OF CALIFORNIA, DIVISION OF HIGHWAYS, 150 SOUTH SPRING STREET, LOS ANGELES, CALIFORNIA.
 9. APPROVAL OF THIS PLAN BY THE COUNTY OF LOS ANGELES DOES NOT CONSTITUTE A REPRESENTATION AS TO THE ACCURACY OF THE LOCATION OF OR THE EXISTENCE OR NON-EXISTENCE OF ANY UNDERGROUND UTILITY PIPE, OR STRUCTURE WITHIN THE LIMITS OF THE PROJECT. THIS NOTE APPLIES TO ALL PAGES.
 10. REFER TO SECTION 100.01 OF THE STANDARD SPECIFICATIONS REGARDING SAFETY DEVICES.
 11. PRIOR TO ISSUANCE OF THE REQUIRED SEWER CONSTRUCTION PERMIT BY THE COUNTY ENGINEER THE CONTRACTOR SHALL OBTAIN A PERMIT TO DISCHARGE FROM THE STATE OF CALIFORNIA, DEPARTMENT OF INDUSTRIAL RELATIONS DIVISION OF INDUSTRIAL SAFETY AND SHALL FILE A CERTIFICATE OF WORKERS COMPENSATION INSURANCE. THE CONTRACTOR SHALL BE NOTIFIED 30 DAYS PRIOR TO CANCELLATION OF POLICY.
 12. (X) INDICATES HOUSE LATERAL SHALL BE CONSTRUCTED UNDERNEATH OF INDICATED STRUCTURE.

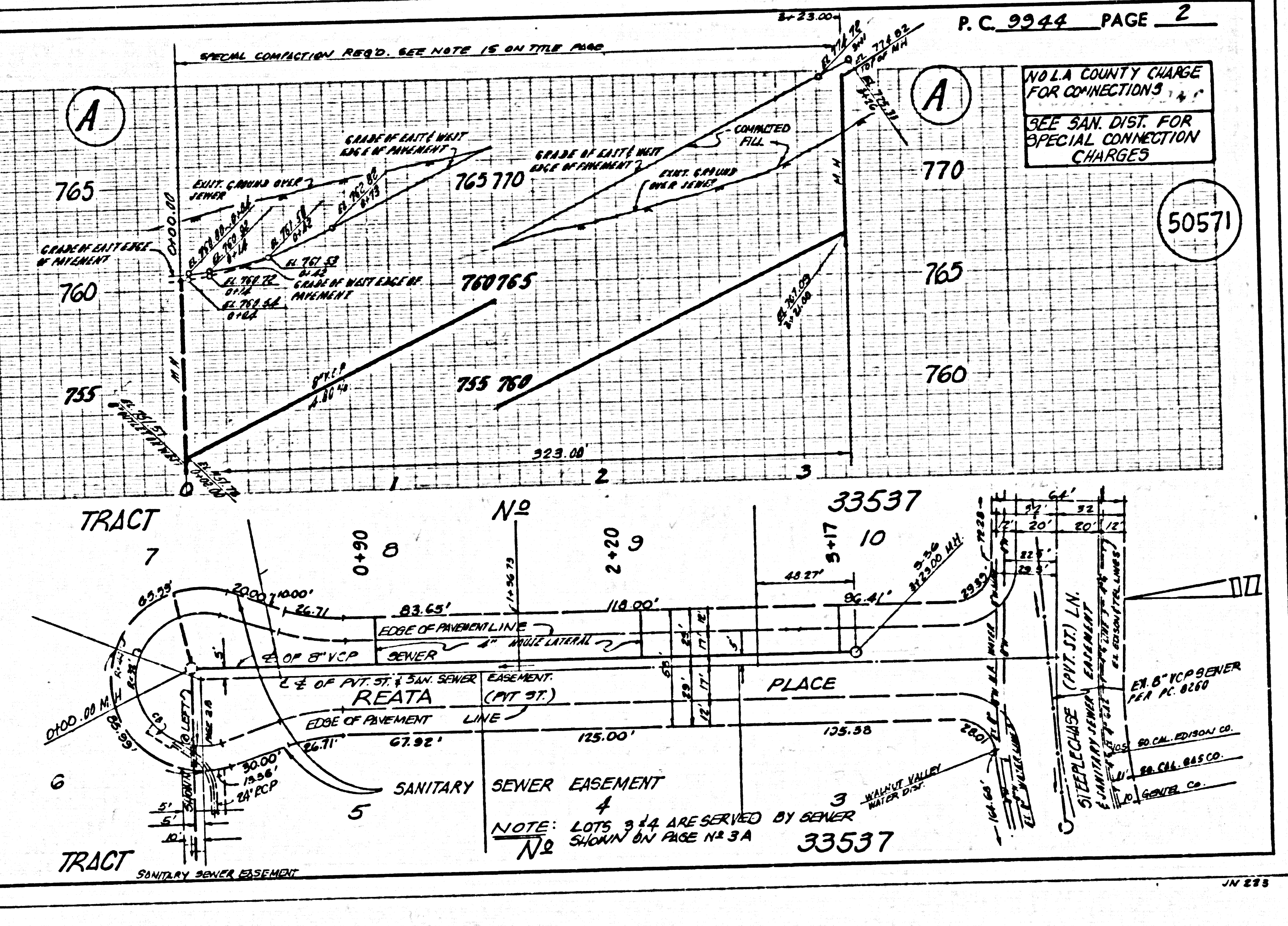
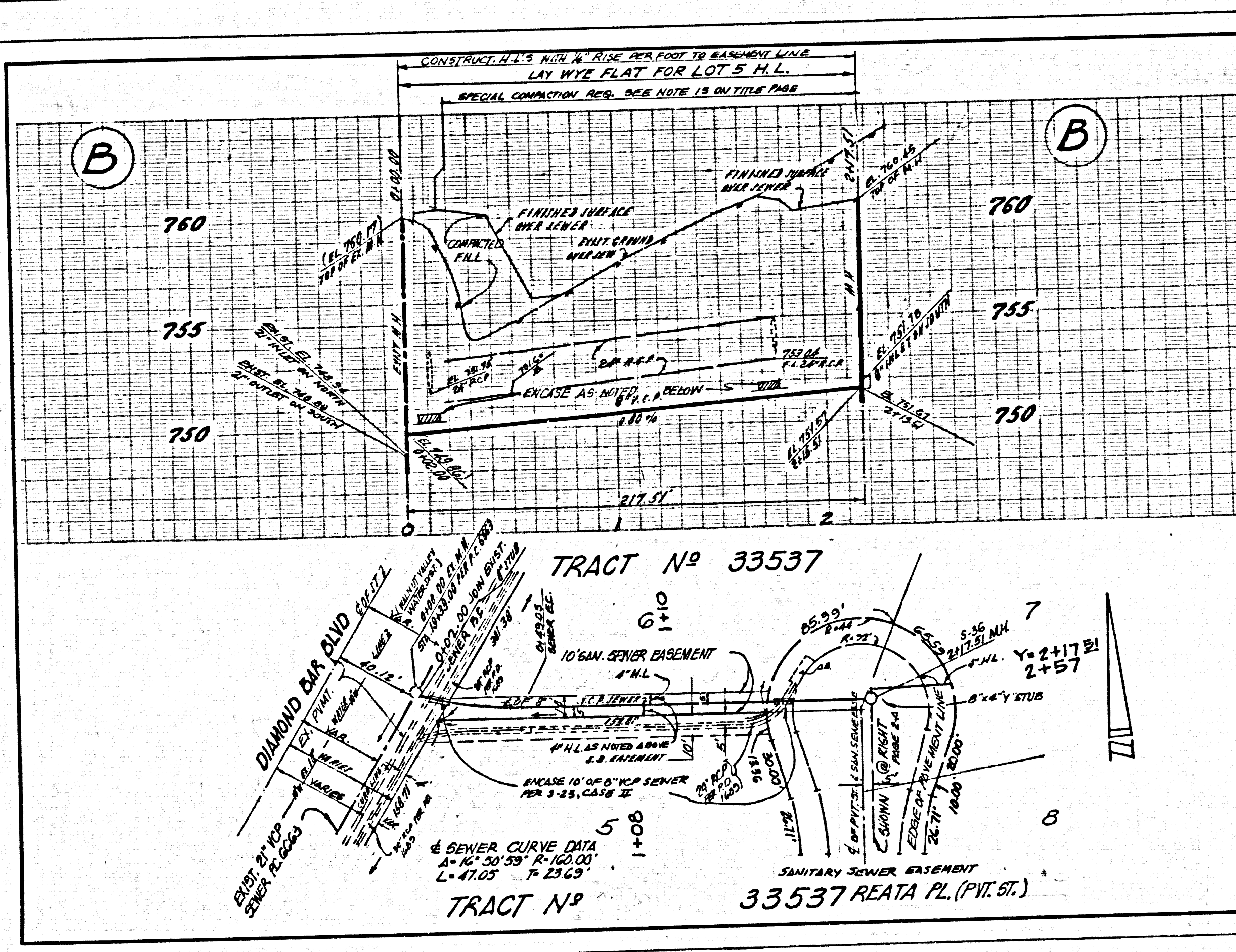
- CONSTRUCTION NOTES:**
1. WORK SHALL BE CONSTRUCTED ACCORDING TO THE STANDARD SPECIFICATIONS FOR PUBLIC WORKS CONSTRUCTION 1978 EDITION WITH COUNTY SUPPLEMENTS AND COUNTY ENGINEER SPECIAL PROVISIONS FOR THE CONSTRUCTION OF SANITARY SEWERS DATED SEPTEMBER 21, 1976, AND SHALL BE PROTECTED ONLY IN THE PRESENCE OF THE COUNTY ENGINEER.
 2. THE CONTRACTOR SHALL NOTIFY THE SUPERVISOR OF THE SANITATION DISTRICT BY TELEPHONE 962-8805, AT LEAST TWENTY-FOUR HOURS BEFORE STARTING ANY WORK UNDER THIS CONTRACT.
 3. HOUSE LATERALS TO BE CONSTRUCTED WITH INVERTS AT PROPERTY LINE 6 FEET BELOW GRADE OF FINISHED GRADE EXCEPT AS NOTED.
 4. WYE OR T BRANCHES MAY BE USED FOR CONNECTIONS TO MANHOLE SEWERS EXCEPT AS NOTED.
 5. ALL STRUCTURES SHALL BE 8" RIBBON BRICK MANHOLES PER S. 28, EXCEPT AS NOTED.
 6. HOUSE LATERALS ON THE PROPERTY LINE OR PROPERTY LINES PRODUCE AT RIGHT ANGLES TO THE SEWER LINE AT THE CENTER LINE OF EACH MANHOLE.
 7. MANHOLE TOPS IN UNIMPROVED AREAS SHALL BE 24 INCHES ABOVE FINISHED GRADE.
 8. VITRIFIED CLAY PIPE JOINTS SHALL BE THE "T" OR "Y" JOINT PER STANDARD SPECIFICATIONS SECTION 300-2.
 9. IF A COVER POLE IS WITHIN THREE FEET OF THE SEWER, THE SEWER SHALL BE ENCASED PER S. 28, CASE II, TWO FEET ON EACH SIDE FROM THE POINT OF INTERFERENCE.
 10. IF DURING THE COURSE OF CONSTRUCTION IT IS DETERMINED THAT THERE IS LESS THAN FOUR FEET OF COVER OVER THE TOP OF A MAIN LINE OR HOUSE LATERAL V.C.P. SEWER WHICH IS NOT INDICATED ON THE PLANS, THE PIPE SHALL BE ENCASED PER S. 28, CASE II UNLESS OTHERWISE APPROVED BY THE COUNTY ENGINEER.
 11. ALL JOINTS BETWEEN CAST IRON PIPE AND VITRIFIED CLAY PIPE SHALL BE MADE WITH A RUBBER SLEEVE JOINT, TYPE "C" OR "B", WITH BURNING IF NECESSARY PER STANDARD SPECIFICATIONS SECTION 300-2.
 12. SEWERS TO BE TESTED FOR LEAKS PER SECTION 300-4.6 OF THE STANDARD SPECIFICATIONS AND SPECIAL PROVISIONS.
 13. REPAIR FACE ALL TRENCHES WITHIN PAVED AREAS TO MEET L.A. COUNTY ROAD DEPT. OR CALIFORNIA STATE HIGHWAY REQUIREMENTS IN ACCORDANCE WITH PERMITS.
 14. FULL COMPLIANCE WITH SECTION 200-1.8 OF THE SPECIAL PROVISIONS WILL BE REQUIRED FOR BACKFILL IN STREETS. CERTIFICATION OF BACKFILL COMPLETION AND SAM EQUIVALENTS BY A QUALIFIED, REGISTERED TESTING LABORATORY SHALL BE PROVIDED BY THE PERMITTEE PRIOR TO THE ISSUANCE OF A CERTIFICATE OF PARTIAL ACCEPTANCE.
 15. SPECIAL BACKFILL IN EASEMENT CONSTRUCTION: (A) BACKFILL TRENCHES AND REPLACE OTHER EARTH SO AS TO MAINTAIN THE ORIGINAL OR PROPOSED GRADES AND SLOPES SHOWN ON THE GRADING PLAN APPROVED FOR THIS DEVELOPMENT BY THE BUILDING SAFETY DIVISION OF L.A. COUNTY. ALL BACKFILL AND FINISH REPAIRS SHALL BE CONFORMED TO THE MINIMUM OF 90% PROPERLY PLACED AND COMPACTED PER SECTION 200-1.8 OF THE SPECIAL PROVISIONS. THE CONTRACTOR SHALL BE RESPONSIBLE FOR THE PROPER CONSTRUCTION OF SUCH CONSTRUCTION SHALL BE SUBMITTED TO THE ENVIRONMENTAL EQUIPMENT DIVISION.

PROFILE, ALIGNMENT AND GRADE OF
SANITARY SEWERS PAGE 1
 TO BE CONSTRUCTED IN
TRACT NO. 33537
PRIVATE CONTRACT NO. 9944
 W.S. 39-B-4
 2 SHEETS, 3 PAGES (50570)
 SCALE: HORIZ. 1" = 40' VERT. 1" = 4'
 APRIL, 1981
 PREPARED IN THE OFFICES OF
 BILL RICHARDSON & ASSOC.
 1305 E. 17th STREET, SUITE 229
 SANTA ANA CALIF. 92701 (714) 542-2133
 BY: *Bill Richardson*
 REG. C.E. NO. 3301

THE FOLLOWING LATEST REVISED STANDARD PLANS ON FILE IN THE OFFICE OF THE COUNTY ENGINEER SHALL APPLY IN THE CONSTRUCTION OF THIS PROJECT.

SEWER	5-1
MINIMUM PUBLIC SAFETY REQUIREMENTS	5-2
BRICK MANHOLE	5-3
STANDARD MANHOLE STEP	5-4
WORKING FOR SEWER PIPE	5-5
CRACKING AND ENCASEMENT	5-6
WYE OR T SUPPORT	5-7
ALLOWABLE TRENCH WIDTHS	5-8
LOCKING MANHOLE FRAME AND COVER	5-9
NON-BETONIFIED 8" V.C.P. CONCRETE MANHOLE	5-10
SMALLER PIPE ABOVE LATERALS	5-11

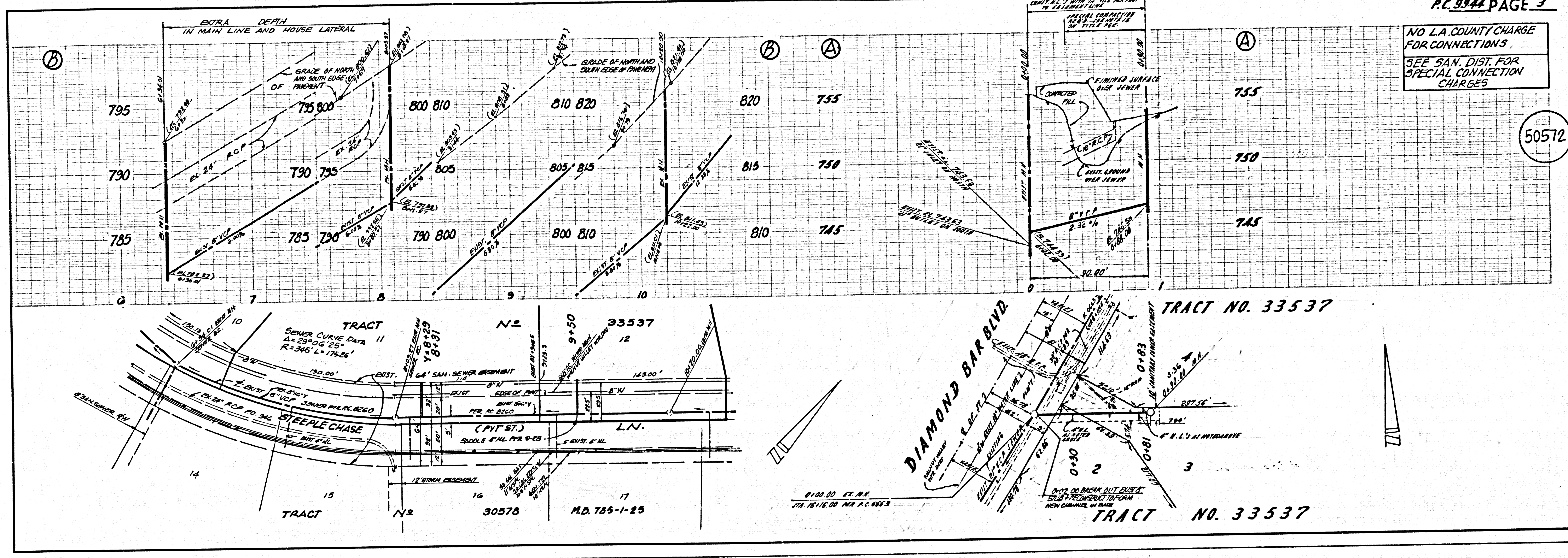
COUNTY OF LOS ANGELES, CALIFORNIA
 STEPHEN J. KIDWELL, COUNTY ENGINEER
 WALTER E. GURUBOV, CHIEF ENGINEER
 CO. SAN. DIST. NO. 21
 APPROVED: *Stephen J. Kidwell* 5/10/82
 SAN DIMAS REGIONAL ENGINEER (DATE)
 APPROVED: *Walter E. Gurubov* 5/14/82
 CHIEF ENGINEER (DATE)
 CHECKED: *Ralph David Smith* 5/14/82
 DATE
 NO. C.E. NO. 16873
 SAN DIMAS BLDG. DIST. 10.00



PAGE 09 13335 AN. 91

NO L.A. COUNTY CHARGE FOR CONNECTIONS
SEE SAN. DIST. FOR SPECIAL CONNECTION CHARGES

50572



AGE 09
RECEIVED