

PARCEL MAP No. 14534 PRIVATE CONTRACT NO. 9949

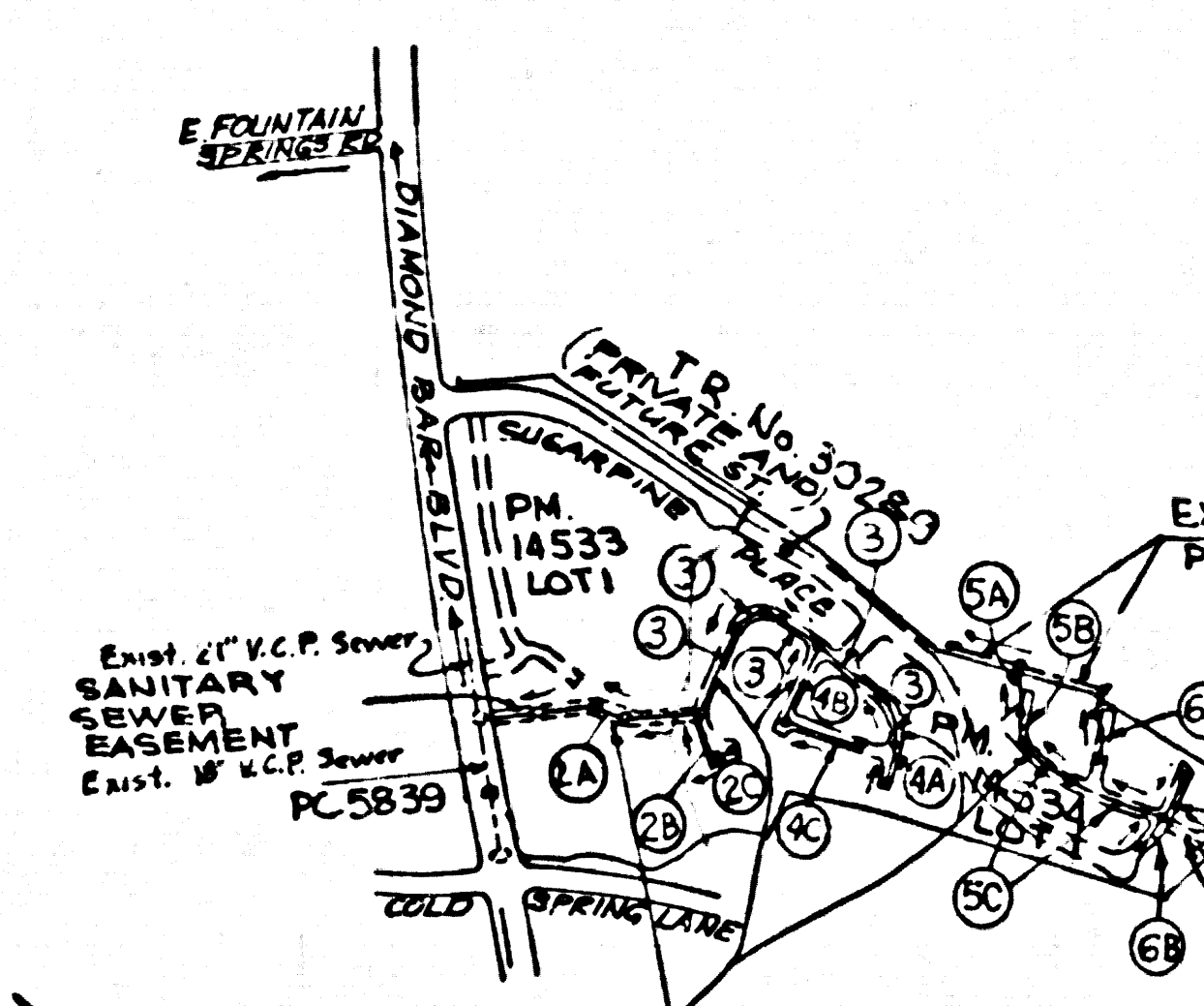
W.S. 39-B.5 3 SHEETS, 6 PAGES 90135

COUNTY OF LOS ANGELES, CALIFORNIA STEPHEN J. KOONCE, COUNTY ENGINEER WALTER E. GARRISON, CHIEF ENGINEER

GENERAL NOTES: DOUBLE SCALE. 1. REVISIONS ARE IN PENCIL ABOVE U.S.C. & G.S. 864 BY DATE OF YEAR.

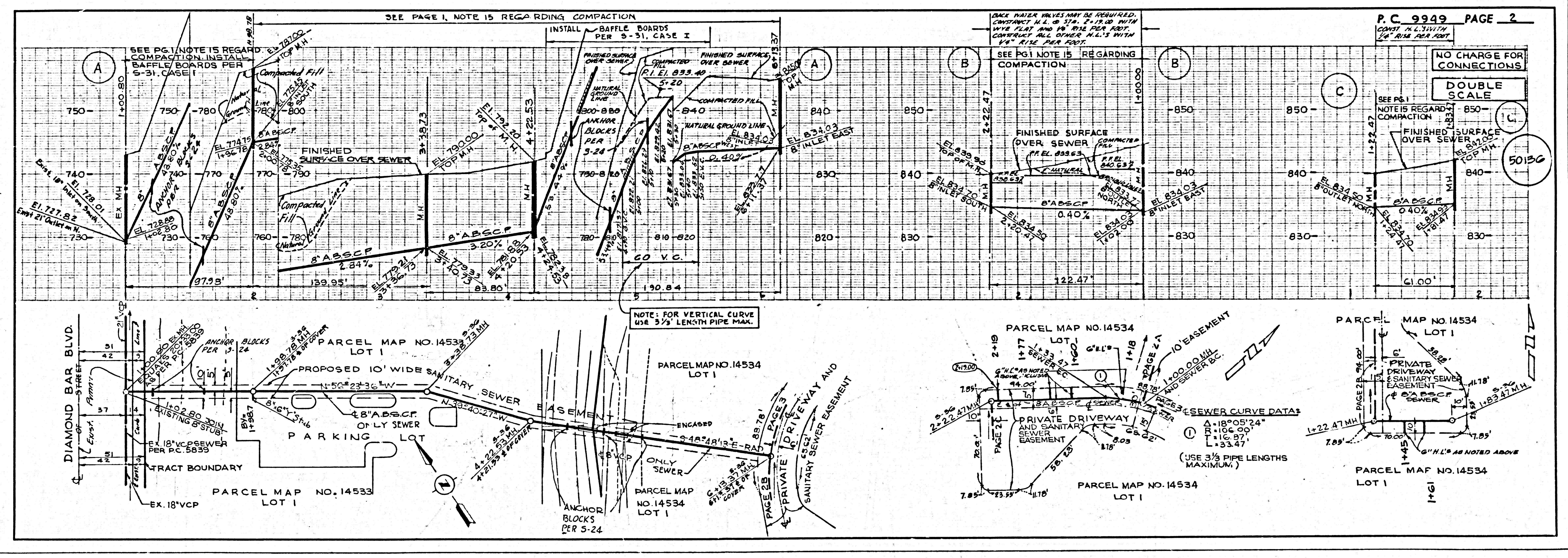
CONSTRUCTION NOTES CONTINUED: 16. FULL COMPLIANCE WITH PART 12 OF THE SPECIAL PROVISIONS IS REQUIRED FOR THE INSTALLATION OF A.B.S. COMPOSITE PIPE.

B.M. CG 3907 ELEV. 744.625 L.A. CO. RD. DEPT. B.M. IN NW 1/4 CUFA OF DIAMOND BAR BLVD. 1.38' N.E. LY OF B.C.R. COLD SPRING LANE.



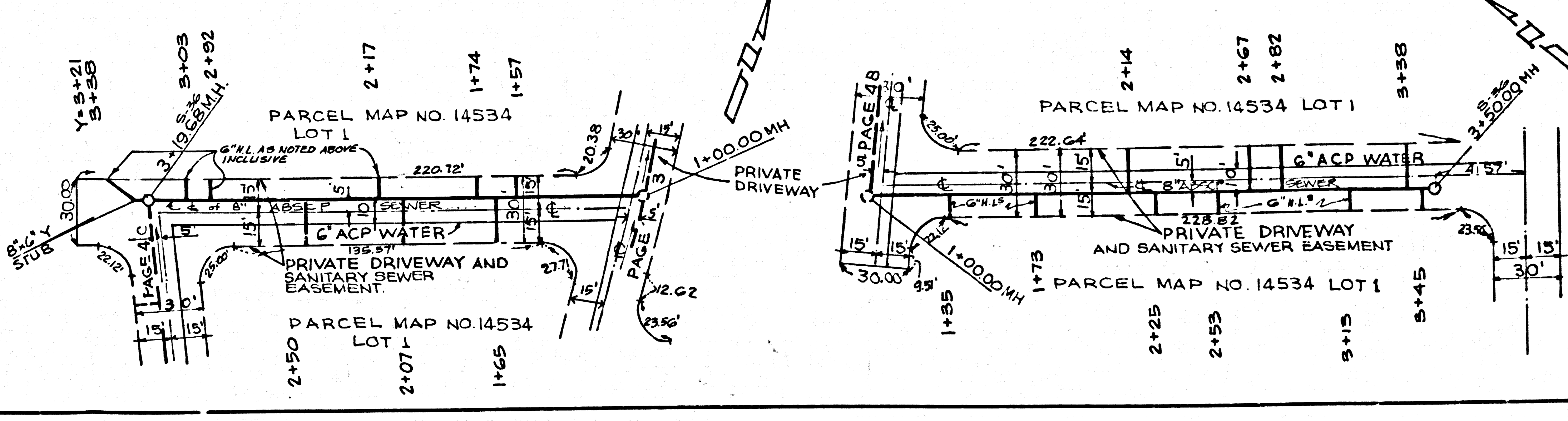
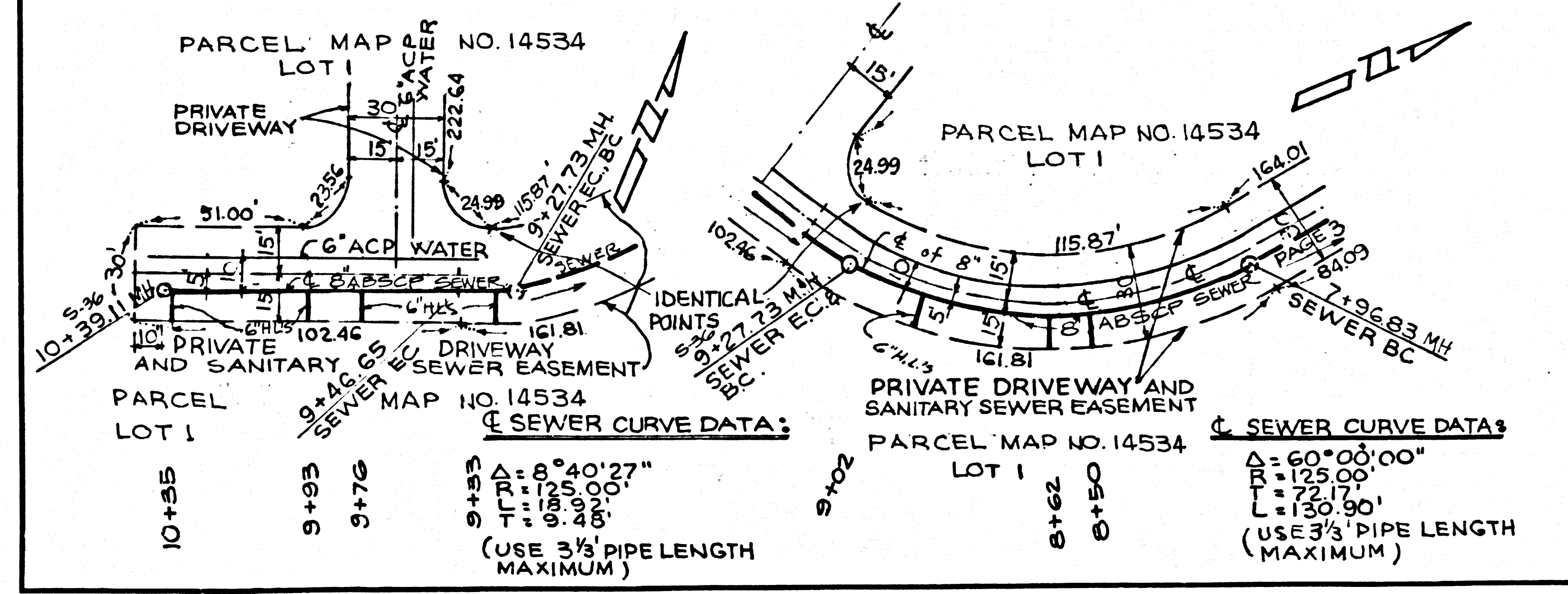
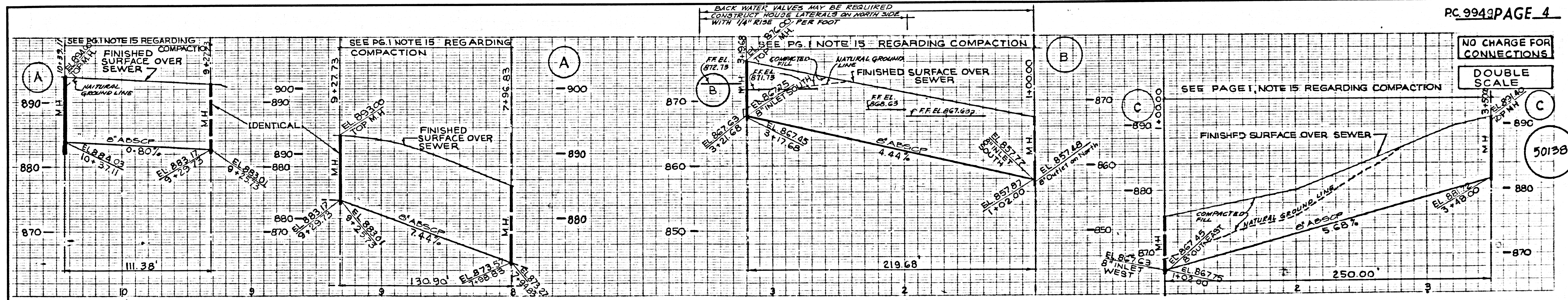
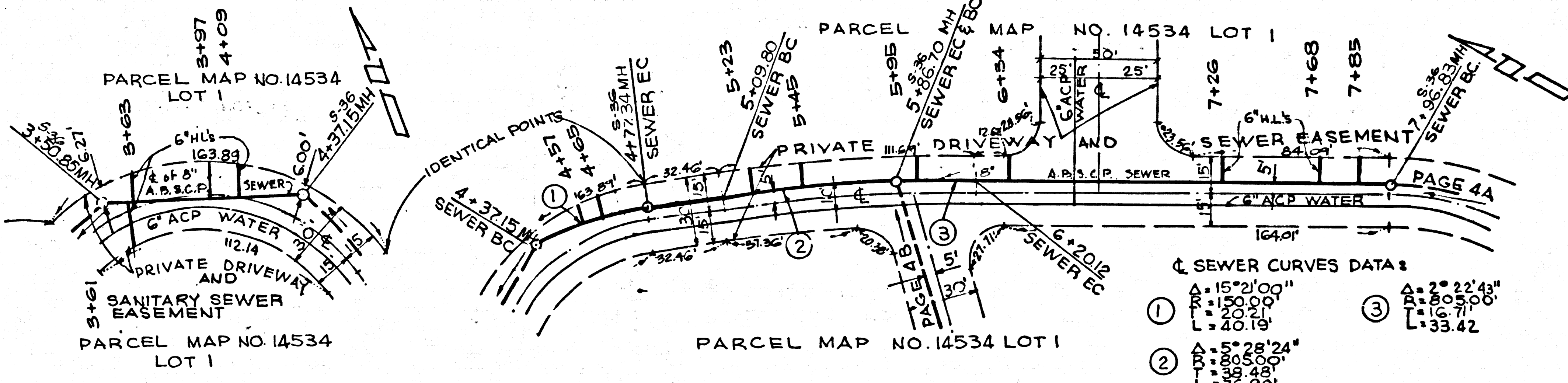
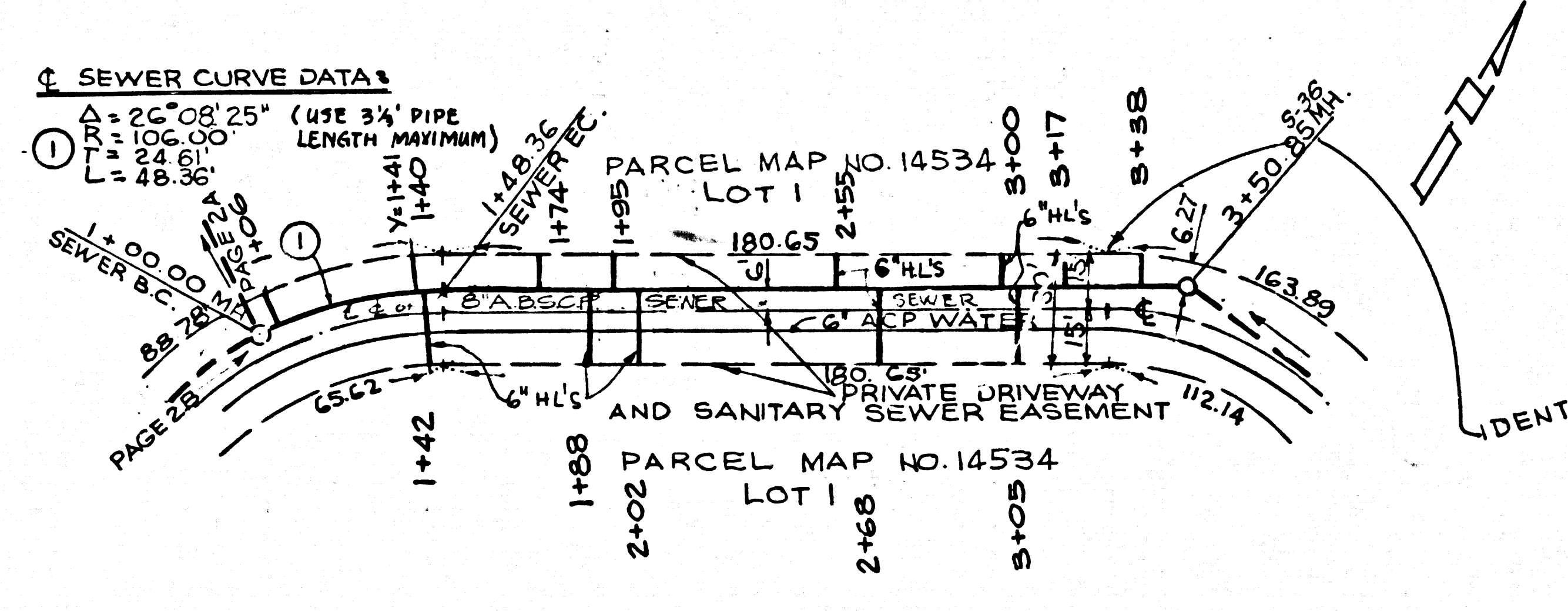
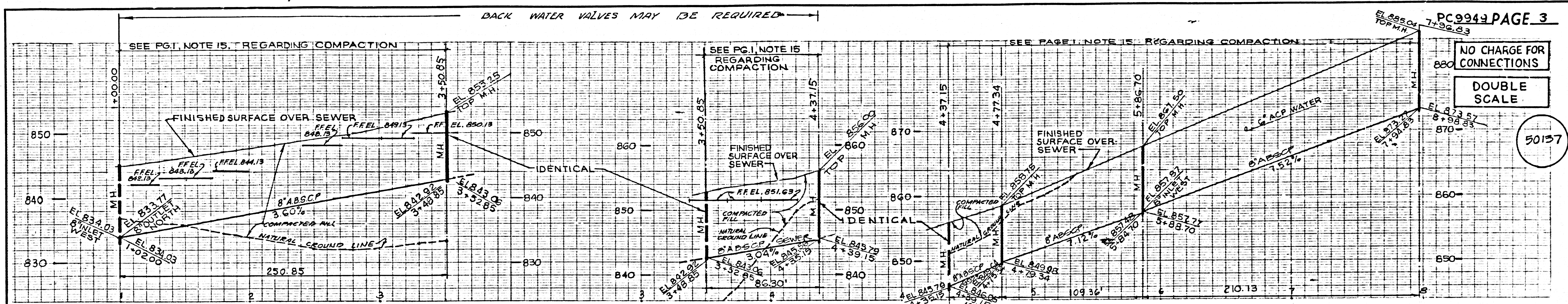
INDEX MAP PC. 9949, PARCEL MAP NO. 14534 SCALE: 1" = 600'

NOTE: NUMBERS IN CIRCLES INDICATE PAGE NUMBERS. ISSUE NO HOUSE CONNECTION PERMIT UNTIL P.C. 9932A IS ACCEPTED.



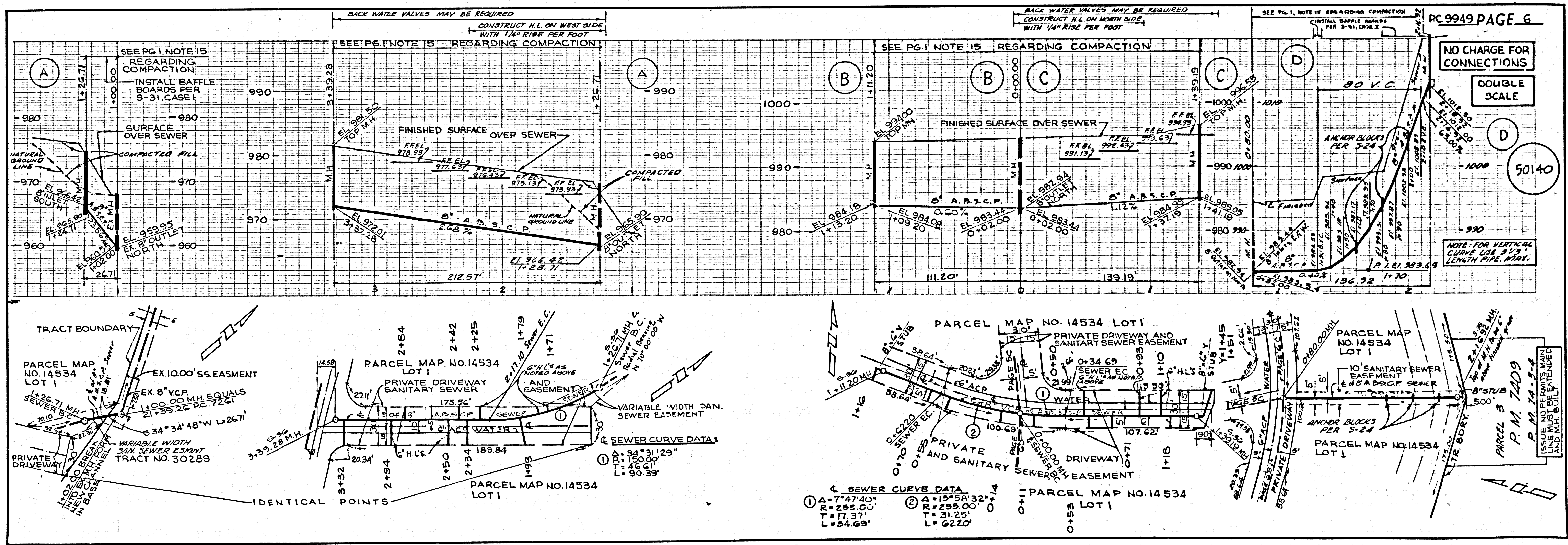
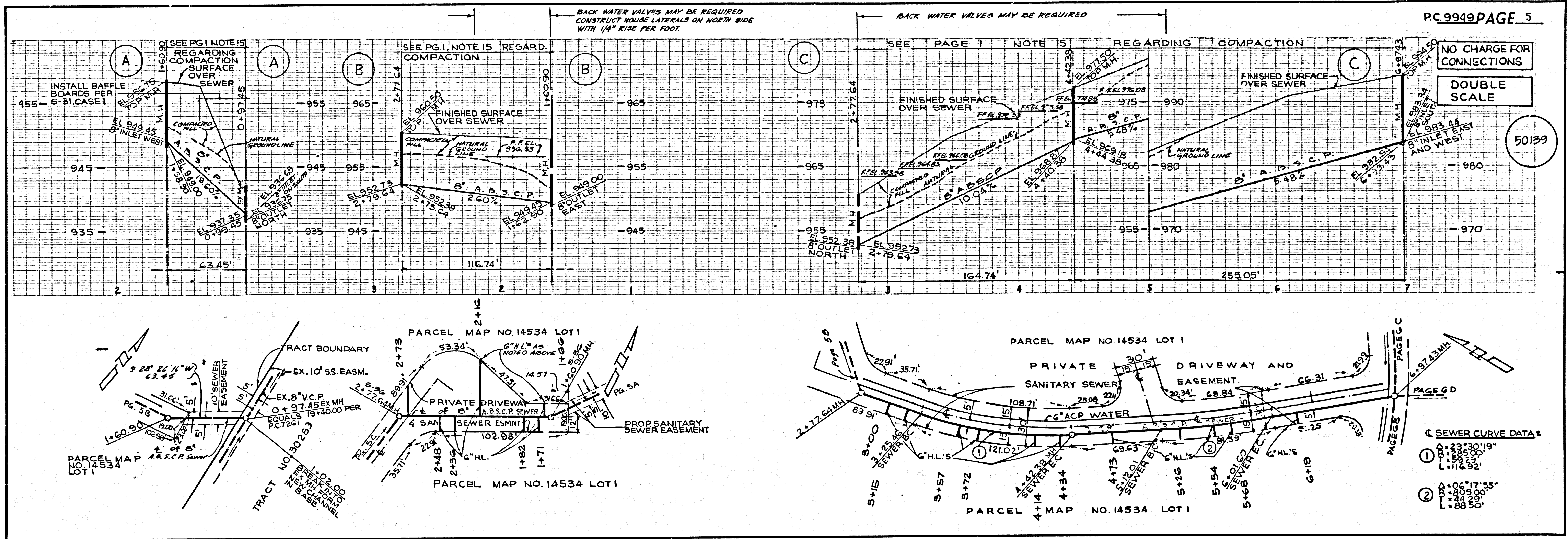
PAGE 09

ASCEM 010 PAM JESQAP



PAGE 39

ASSET INV NO 14534



PAGE 09

PAGE 09