

B.M. BY-9126 ELEV. 798.072
 C.S.B.M. MON. 6" UP 21" 50' OF CENTERLINE OF
 MULHOLLAND HWY. 8 234' E. OF P.P. #543176-H
 MARKED "BM 58-45-A 1969" W/ 2" I.P. 3" UP
 8 2' SO.
 MALIBU QUAD. 1974 ADJUSTMENT

DOUBLE SCALE

GENERAL NOTES:

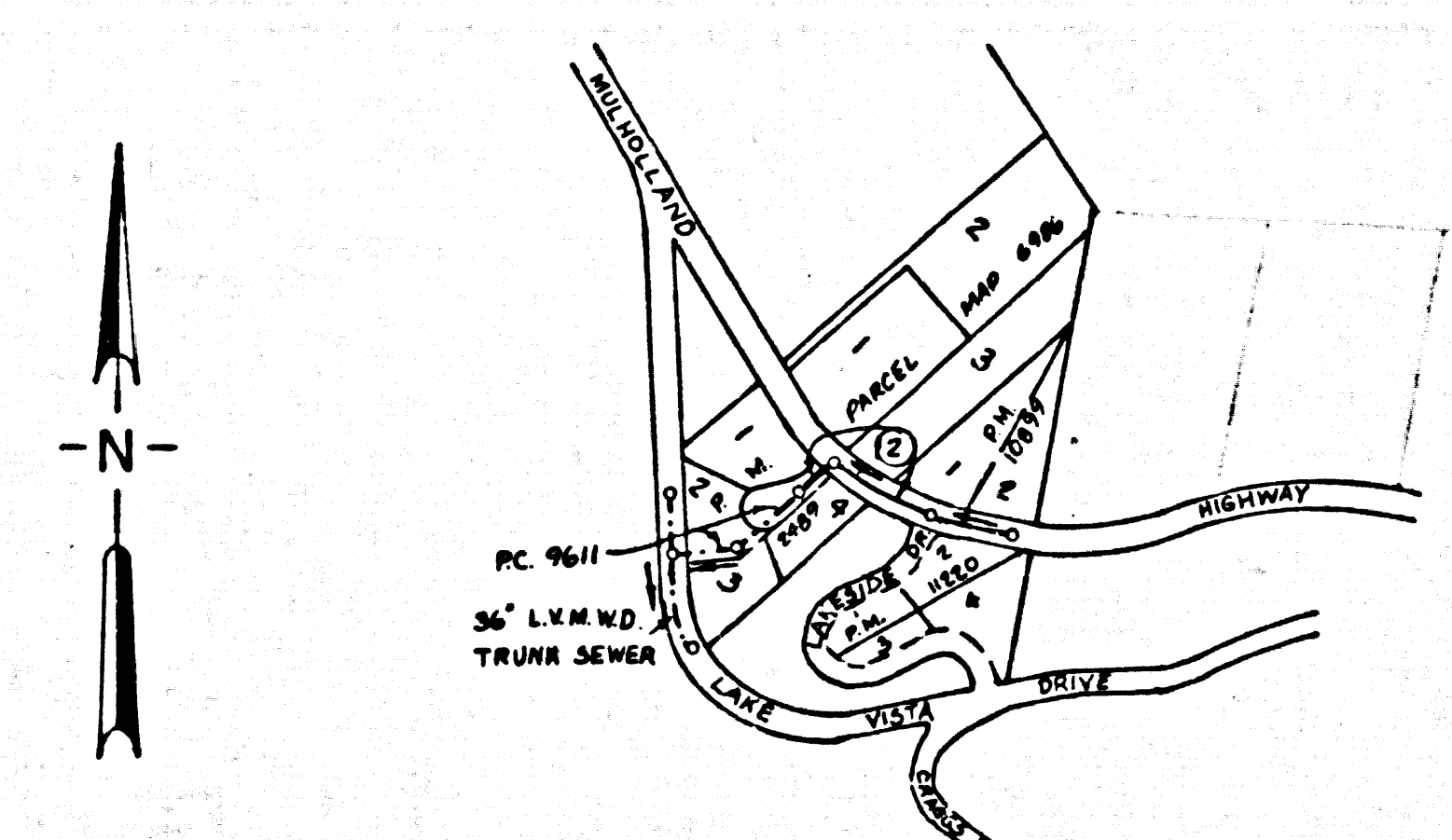
- ELEVATIONS ARE IN FEET ABOVE U.S.C. & G.S. MEAN LEVEL DATUM OF 1928.
- NO REVISIONS SHALL BE MADE IN THESE PLANS WITHOUT THE APPROVAL OF THE COUNTY ENGINEER.
- NO REPRESENTATIVE OF THE COUNTY ENGINEER WILL SURVEY OR LAY OUT ANY PORTION OF THE WORK.
- GRADES TO WHICH THIS IMPROVEMENT IS TO BE CONSTRUCTED ARE SHOWN ON PLANS AND PROFILES. GRADE POINTS FOR TOP OF CURB, CENTER LINE OF STREETS, OR CENTER LINE OF ALLEYS ARE SHOWN BY CIRCLES ON PROFILES. AT ALL POINTS BETWEEN DESIGNATED POINTS THE GRADE SHALL BE ESTABLISHED SO AS TO CONFORM TO A STRAIGHT LINE DRAWN BETWEEN SAID DESIGNATED POINTS.
- THE PRIVATE ENGINEER SHALL FURNISH THE COUNTY ENGINEER WITH GRADE SHEETS AND STATIONING FOR ALL HOUSE LATERALS AND "Y" OR "T" BRANCHES AND SHALL PROVIDE STAKES FOR THEM AT THEIR PROPER LOCATIONS WITH STATIONING PLAINLY MARKED. ALL HOUSE LATERALS SHALL BE CONSTRUCTED ON A STRAIGHT ALIGNMENT AT RIGHT ANGLES FROM THE MAIN LINE SEWER EXCEPT AS SHOWN ON THE PLANS. HOUSE LATERALS FROM CHIMNEYS SHALL NOT HAVE AN ANGLE OF LESS THAN 45° WITH THE MAIN LINE SEWER. ANY CHANGE IN ALIGNMENT SHALL BE INDICATED IN WRITING BY THE PRIVATE ENGINEER.
- THE PRIVATE ENGINEER SHALL FURNISH THE HOUSE LATERAL DEPTH AT THE PROPERTY LINE BELOW THE TOP OF CURB ELEVATION FOR EACH HOUSE LATERAL ON THE GRADE SHEET.
- BEFORE WORK CAN BE STARTED, THE CONTRACTOR MUST OBTAIN A "PERMIT TO EXCAVATE IN COUNTY STREETS FROM THE L.A. COUNTY ROAD DEPT., DISTRICT OFFICE NO. 3, 318 E. 1ST ST., LOS ANGELES, CALIFORNIA 90012, AND PAY IN FULL TO THE COUNTY ENGINEER, 800 S. VERNAMONT AVENUE, LOS ANGELES, CA 90005, TO COVER THE COST OF CONSTRUCTION INSPECTION AND RECORD PLANS.
- IF WORK IS TO BE DONE IN A STATE HIGHWAY, A PERMIT MUST BE OBTAINED FROM THE STATE OF CALIFORNIA, DIVISION OF HIGHWAYS, 150 SOUTH SPRING STREET, LOS ANGELES, CALIFORNIA.
- APPROVAL OF THE PLAN BY THE COUNTY OF LOS ANGELES DOES NOT CONSTITUTE A REPRESENTATION AS TO THE ACCURACY OF THE LOCATION OF OR THE EXISTENCE OR NON-EXISTENCE OF ANY UNDERGROUND UTILITY PIPE, OR STRUCTURE WITHIN THE LIMITS OF THIS PROJECT. THIS NOTE APPLIES TO ALL PAGES.
- REFER TO SECTION 7.16.41 OF THE STANDARD SPECIFICATIONS, REGARDING SAFETY ORDERS.
- PRIOR TO THE ISSUANCE OF THE REQUIRED SEWER CONSTRUCTION PERMIT, THE CONTRACTOR SHALL OBTAIN AND FILE WITH THE COUNTY ENGINEER COPIES OF A PERMIT TO EXCAVATE IN COUNTY STREETS FROM THE LOS ANGELES COUNTY ROAD DEPARTMENT, A PERMIT FOR EXCAVATIONS AND TRENCHES FROM THE STATE OF CALIFORNIA, DIVISION OF INDUSTRIAL SAFETY AND A CERTIFICATE OF WORKERS COMPENSATION INSURANCE WITH THE DEPARTMENT OF COUNTY ENGINEER, 800 SOUTH VERNAMONT, RM. 408, LOS ANGELES, CALIFORNIA 90005, NAMED AS THE CERTIFICATE HOLDER TO BE NOTICED 30 DAYS PRIOR TO CANCELLATION OF POLICY.

PROFILE, ALIGNMENT AND GRADE OF
SANITARY SEWERS
 TO BE CONSTRUCTED IN
 MULHOLLAND HIGHWAY

PRIVATE CONTRACT NO. 9960

W.S. 93
 1 SHEET, 2 PAGES
 SCALE: VERT. 1" = 6' HORIZ. 1" = 40'
 OCTOBER, 1980
 PREPARED IN THE OFFICES OF
LAS VIRGENES VALLEY ENGINEERING CORP.
 28438 ROADSIDE DRIVE - SUITE 3
 AGOURA, CALIFORNIA 91301 (213) 991-2788
 BY: HANS J. GIRAUD
 REG. C. E. No. 17722

49912



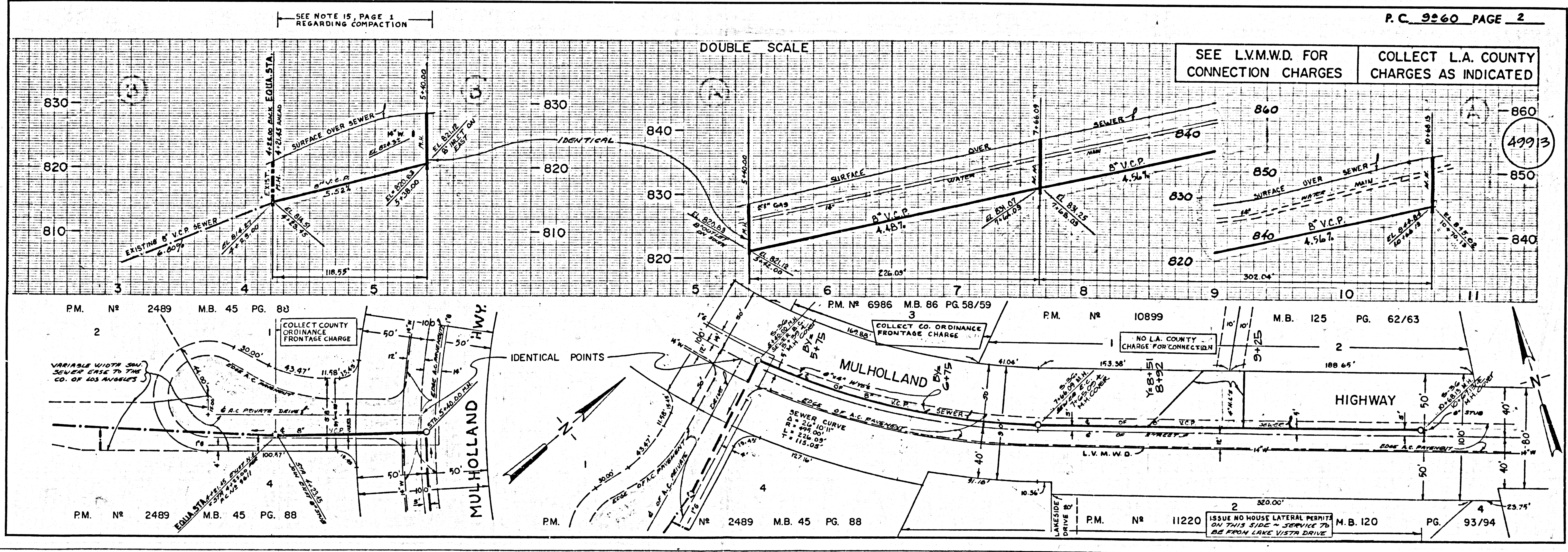
INDEX MAP - P.C. No. 9960
 SCALE 1" = 600'

REVISION #1
 REVISED ALIGNMENT AND GRADES OF 8" V.C.P. SEWER
 BETWEEN JOINT AT EXISTING STATION 4+42.5 TO
 STATION 10+70.13. SEE PAGE 2.
 APPROVED: Robert David Stewart 9/29/82
 R.C.E. 16553 DATE

THE FOLLOWING LATEST REVISED STANDARD PLANS ON FILE IN THE OFFICE OF THE COUNTY ENGINEER SHALL APPLY IN THE CONSTRUCTION OF THIS PROJECT.

BRICKMAN PUBLIC SAFETY REQUIREMENTS	8-1
BRICK MANHOLE	8-2
STANDARD MANHOLE FITTING	8-17
BRICKWORK FOR SEWER PIPE	8-31
CHASING AND ENCASING	8-32
WYE ON THE SUPPORT	8-33
ALLOWABLE TRENCH WIDTHS	8-38
LOCKING MANHOLE FRAMES AND COVERS	8-40
NON-BRICKWORK PRECAST CONCRETE MANHOLE	8-41

COUNTY OF LOS ANGELES, CALIFORNIA
 STEPHEN J. KOONCE, COUNTY ENGINEER LAS VIRGENES MUNICIPAL WATER DISTRICT
 4232 LAS VIRGENES ROAD CALABASAS, CALIFORNIA 91302
 APPROVED: Robert L. Murphy 7/14/81
 CHECKED: Robert David Stewart 7/16/81
 H.W. STOKES R.C.E. 9555 CHIEF ENGR.
 CALABASAS BLDG. DIST. 91 DATE 7/23/81



P.C. 9960 PAGE 2

SEE L.V.M.W.D. FOR CONNECTION CHARGES
 COLLECT L.A. COUNTY CHARGES AS INDICATED

49913