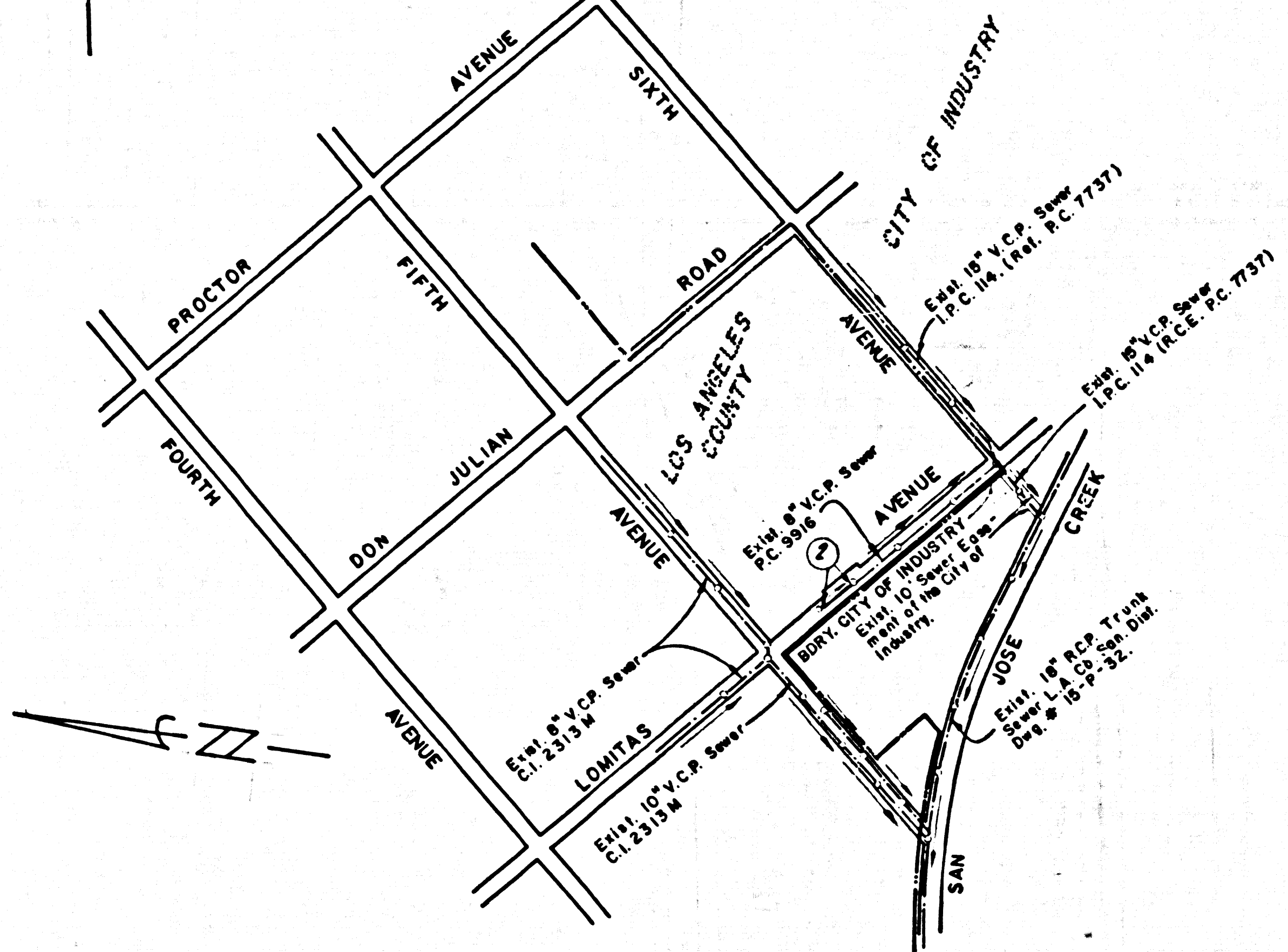


B.M. CG 2273 ELEV. 285.532
 C.S. MON. IN WELL 11 INCHES DN AT
 S.E. COR. LOMITAS AVE. + 5TH AVE.
 10 FT. S. + 10 FT. E. C/L INT. MKD (B.M. 42-2)
 BASELINE QUAD. 19.75



INDEX MAP
 SCALE: 1" = 600'
 P.C. 9962
 LOMITAS AVE. EXTENSION

NOTICE TO CONTRACTOR:
 THE UTILITY LINES SHOWN ON THESE PLANS ARE APPROXIMATE
 ONLY AND ARE BASED UPON AVAILABLE RECORDS. THE CONTRACTOR
 IS REQUIRED TO TAKE DUE PRECAUTIONARY MEASURES TO PROTECT
 THE UTILITY LINES SHOWN ANY OTHER LINES NOT OF RECORD
 OR NOT SHOWN ON THESE PLANS.

ISSUE NO PERMITS
 UNTIL P.C. 9916 IS
 ACCEPTED

NO CONNECTION FOR THE DISPOSAL OF INDUSTRIAL WASTES
 SHALL BE MADE TO SEWERS SHOWN ON THESE DRAWINGS UNTIL
 A PERMIT FOR INDUSTRIAL WASTEWATER DISCHARGE HAS BEEN
 ISSUED BY THE SANITATION DISTRICTS FOR SAID CONNECTION.
 BEFORE BREAKING INTO OR CONSTRUCTION ON A COUNTY
 SANITATION DISTRICT SEWER AND PRIOR TO FINAL
 ACCEPTANCE OF THE PROJECT, SANITATION DISTRICT
 INSPECTION SHALL BE NOTIFIED BY PHONE - 952-8605
 OR BY MAIL SO THAT REQUIRED INSPECTION CAN BE MADE.

GENERAL NOTES:

1. ELEVATIONS ARE IN FEET ABOVE U.S.C. & G.S. SEA LEVEL DATUM OF 1929.
2. NO REVISIONS SHALL BE MADE IN THESE PLANS WITHOUT THE APPROVAL OF THE COUNTY ENGINEER.
3. NO REPRESENTATIVE OF THE COUNTY ENGINEER WILL SURVEY OR LAY OUT ANY PORTION OF THE WORK.
4. GRADES TO WHICH THE IMPROVEMENT IS TO BE CONSTRUCTED ARE SHOWN ON PLANS AND PROFILES OR ARE POINTS FOR TOP OF CURB, CENTER LINE OF STREETS, OR CENTER LINE OF ALLEYS ARE SHOWN BY CIRCLES ON PROFILES AT ALL POINTS BETWEEN DESIGNATED POINTS THE GRADE SHALL BE ESTABLISHED SO AS TO CONFORM TO A STRAIGHT LINE DRAWN BETWEEN SAID DESIGNATED POINTS.
5. THE PRIVATE ENGINEER SHALL FURNISH THE COUNTY ENGINEER WITH GRADE SHEETS AND STATIONING FOR ALL HOUSE LATERALS AND "T" OR "Y" BRANCHES AND SHALL FURNISH STAKES FOR THEM AT THEIR PROPER LOCATIONS WITH STATIONING PLAINLY MARKED. ALL HOUSE LATERALS SHALL BE CONSTRUCTED AT RIGHT ANGLES FROM THE MAIN LINE SEWER EXCEPT AS SHOWN ON THE PLANS. HOUSE LATERALS FROM CHIMNEYS SHALL NOT HAVE AN ANGLE OF LESS THAN 45° WITH THE MAIN LINE SEWER. ANY CHANGE IN ALIGNMENT SHALL BE REQUESTED BY WRITING BY THE PRIVATE ENGINEER.
6. THE PRIVATE ENGINEER SHALL FURNISH THE HOUSE LATERAL OFFSETS AT THE PROPERTY LINE BELOW THE TOP OF CURB ELEVATION FOR EACH HOUSE LATERAL ON THE GRADE SHEET.
7. BEFORE WORK CAN BE STARTED, THE CONTRACTOR MUST OBTAIN A PERMIT TO EXCAVATE IN COUNTY STREETS FROM THE L.A. COUNTY ROAD DEPT., DISTRICT OFFICE NO. 1, AND PAY A FEE TO THE COUNTY ENGINEER, 550 S. VERMONT AVE., LOS ANGELES, CALIF. 90020, TO COVER THE COST OF CONSTRUCTION INSPECTION AND RECORD PLANS.
8. IF WORK IS TO BE DONE IN A STATE HIGHWAY, A PERMIT MUST BE OBTAINED FROM THE STATE OF CALIFORNIA, DIVISION OF HIGHWAYS, 138 SOUTH SPRING STREET, LOS ANGELES, CALIFORNIA.
9. APPROVAL OF THIS PLAN BY THE COUNTY OF LOS ANGELES DOES NOT CONSTITUTE A REAFFIRMATION AS TO THE ACCURACY OF THE LOCATION OR OF THE EXISTENCE OR NON-EXISTENCE OF ANY UNDERGROUND UTILITY PIPE, OR STRUCTURE WITHIN THE LIMITS OF THIS PROJECT. THIS NOTE APPLIES TO ALL PAGES.
10. REFER TO SECTION 7-18.4.3 OF THE STANDARD SPECIFICATIONS, REGARDING SAFETY SIGNS.
11. PRIOR TO ISSUANCE OF THE REQUIRED SEWER CONNECTION PERMIT, THE CONTRACTOR SHALL OBTAIN AND FILE WITH THE COUNTY ENGINEER, COPIES OF A PERMIT TO EXCAVATE IN COUNTY STREETS FROM THE Los Angeles County Road Department, a permit for excavations and trenches from the State of California, Division of Industrial Safety and a Certificate of Worker's Compensation Insurance from the Department of County Engineer, 550 South Vermont, Room 405, Los Angeles, California, 90020, named as the Certificate Holder to be notified 30 days prior to cancellation of policy.

CONSTRUCTION NOTES:

1. WORK SHALL BE CONSTRUCTED ACCORDING TO THE STANDARD SPECIFICATIONS FOR PUBLIC WORKS CONSTRUCTION (1975 EDITION WITH 1980 SUPPLEMENTS) AND COUNTY ENGINEER SPECIAL PROVISIONS FOR THE CONSTRUCTION OF SANITARY SEWERS DATED SEPTEMBER 2, 1975, AND SHALL BE PROSECUTED ONLY IN THE PRESENCE OF THE COUNTY ENGINEER.
2. THE CONTRACTOR SHALL NOTIFY THE Environmental Development Division by phone, 738-2156, AT LEAST TWENTY-FOUR HOURS BEFORE STARTING ANY WORK UNDER THIS CONTRACT.
3. HOUSE LATERALS TO BE CONSTRUCTED WITH INVERTS AT PROPERTY LINE 6 FEET BELOW CURB GRADE EXCEPT AS NOTED.
4. WYE OR Tee BRANCHES MAY BE USED FOR CONNECTIONS TO MAINLINE SEWERS EXCEPT AS NOTED.
5. ALL STRUCTURES SHALL BE EITHER BRICK MANHOLES PER S-3 OR PRECAST CONCRETE MANHOLES PER S-36, EXCEPT AS NOTED.
6. PROVIDE STAKES ON THE PROPERTY LINE OR PROPERTY LINES PRODUCED AT RIGHT ANGLES TO THE SEWER LINE AT THE CENTER LINE OF EACH MANHOLE.
7. MANHOLE TOPS IN UNIMPROVED RIGHTS OF WAY TO BE SIX INCHES ABOVE FINISHED GRADE.
8. VITRIFIED CLAY PIPE JOINTS SHALL BE TYPE "B", OR "C" PER STANDARD SPECIFICATIONS SECTION 309.2.
9. IF A POWER POLE IS WITHIN THREE FEET OF THE SEWER, THE SEWER SHALL BE ENCASED, PER S-23, CASE II, TWO FEET ON EACH SIDE FROM THE POINT OF INTERFERENCE.
10. IF DURING THE COURSE OF CONSTRUCTION IT IS DETERMINED THAT THERE IS LESS THAN FOUR FEET OF COVER OVER THE TOP OF A MAIN LINE OR HOUSE LATERAL V.C.P. SEWER WHICH IS NOT INDICATED ON THE PLANS, THE PIPE SHALL BE ENCASED PER S-23, CASE II UNLESS OTHERWISE APPROVED BY THE COUNTY ENGINEER.
11. ALL JOINTS BETWEEN CAST IRON PIPE AND VITRIFIED CLAY PIPE SHALL BE MADE WITH A RUBBER SLEEVE JOINT, TYPE "C" OR "B", (WITH RUBBERING IF NECESSARY) PER STANDARD SPECIFICATIONS, SECTION 309.2.
12. SEWERS TO BE TESTED FOR LEAKAGE PER SECTION 309-4.4 OF THE STANDARD SPECIFICATIONS AND SPECIAL PROVISIONS.
13. PROVIDE ALL TRENCHES WITHIN PAVED AREAS TO MEET L.A. COUNTY ROAD DEPT. OR CALIFORNIA STATE HIGHWAY REQUIREMENTS IN ACCORDANCE WITH PERMITS.
14. FULL COMPLIANCE WITH SECTION 306-1.5 OF THE SPECIAL PROVISIONS WILL BE REQUIRED FOR BACKFILL IN STREETS. CERTIFICATION OF BACKFILL COMPACTION AND SLOPE EQUIVALENTS BY A QUALIFIED, REGISTERED TESTING LABORATORY SHALL BE PROVIDED BY THE PERMITTEE PRIOR TO THE RESUME OF A CERTIFICATE OF PARTIAL ACCEPTANCE.
15. Special backfill in designated areas:
 - (A) Backfill trench and roadway other than removed so on to achieve the natural or finished grades.
 - (B) All backfill and soil replacement shall be compacted to minimum of 90% of maximum density per A.S.T.M. Standard method of testing D698-57T or modified acceptable certification of such compaction shall be submitted to the Environmental Development Division.

PROFILE, ALIGNMENT AND GRADE OF
SANITARY SEWERS PAGE 1
 TO BE CONSTRUCTED IN
LOMITAS AVENUE EXTENSION
 PRIVATE CONTRACT NO. 9962

W.S. 37 - E, 3
 1 SHEET OF 2 PAGES
 SCALE: VERT. 1" = 4'
 HORIZ. 1" = 40'
 MAY 7, 1981
 PREPARED IN THE OFFICES OF:
 COUNTY ENGINEER'S ASSOC.
 WALTER E. GARRISON, INC.
 BY: *Walter E. Garrison*
 REG. C.E. No. 10618

49476

THE FOLLOWING LATEST REVISED STANDARD PLANS ON FILE IN THE OFFICE OF THE COUNTY ENGINEER SHALL APPLY IN THE CONSTRUCTION OF THIS PROJECT.

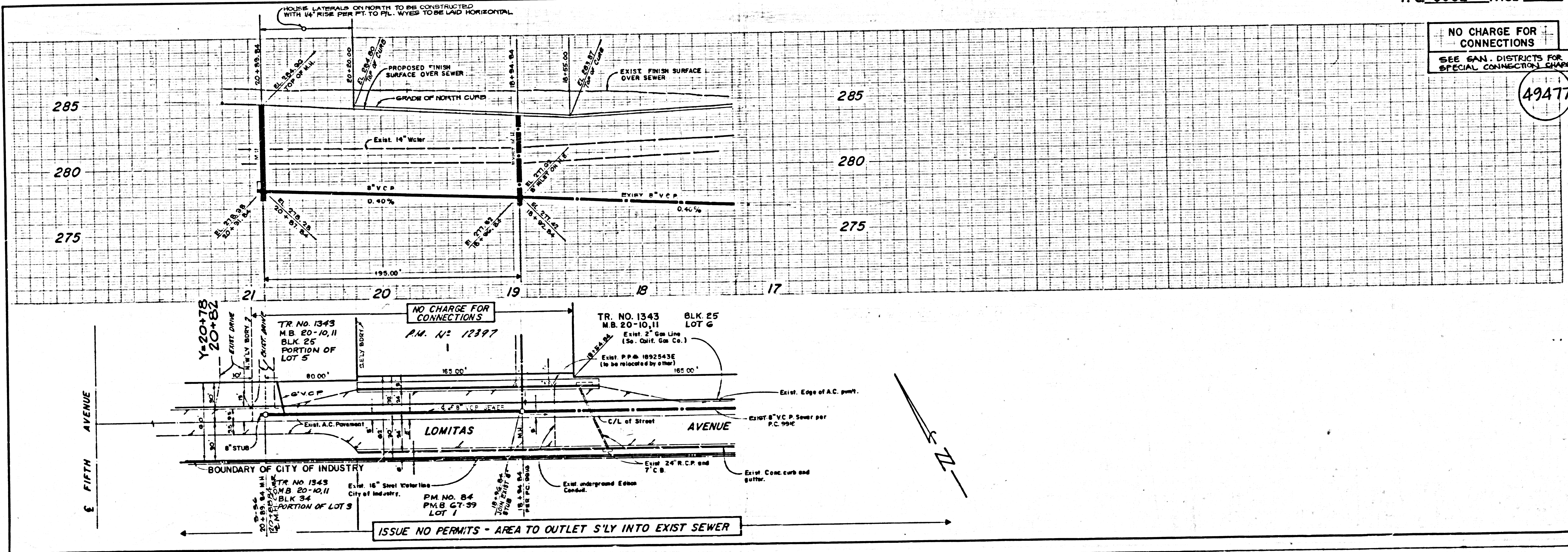
LEGEND	S-1
MINIMUM PUBLIC SAFETY REQUIREMENTS	S-2
BRICK MANHOLE	S-3
STANDARD MANHOLE BRP	S-4
BRP FOR SEWER PIPE	S-5
CASTING AND ENCASEMENT	S-6
WYE OR Tee SUPPORT	S-7
ALLOWABLE TRENCH WIDTHS	S-8
LOCKING MANHOLE FRAME AND COVER	S-9
NON-REINFORCED PRECAST CONCRETE MANHOLE	S-10

COUNTY OF LOS ANGELES, CALIFORNIA
 STEPHEN J. KONES, COUNTY ENGINEER WALTER E. GARRISON, CHIEF ENGINEER
 CO. PLAN NO. 19
 APPROVED *Stephen J. Kones* 6/18/81 APPROVED *Walter E. Garrison* 6/18/81
 San Diego Regional Engineer (S.D.) Office Engineer
 CHECKED *Robert Davis* 6/11/81 (S.D.)
 REG. C.E. No. 16983
 LA PUENTE BLDG. DIST. 200

P.C. 9962 PAGE 2

NO CHARGE FOR CONNECTIONS
 SEE SAN. DISTRICTS FOR SPECIAL CONNECTIONS CHARGES

49477



J11 95-862-01