

W.S. 28
 2 SHEETS, 3 PAGES
 APRIL, 1981
 PREPARED IN THE OFFICES OF
CONSTRUCTED CONSULTANTS, INC.
 11549 JEFFERSON BLVD., SUITE 107
 CULVER CITY, CALIFORNIA 90230
 REG. C. E. No. 12822

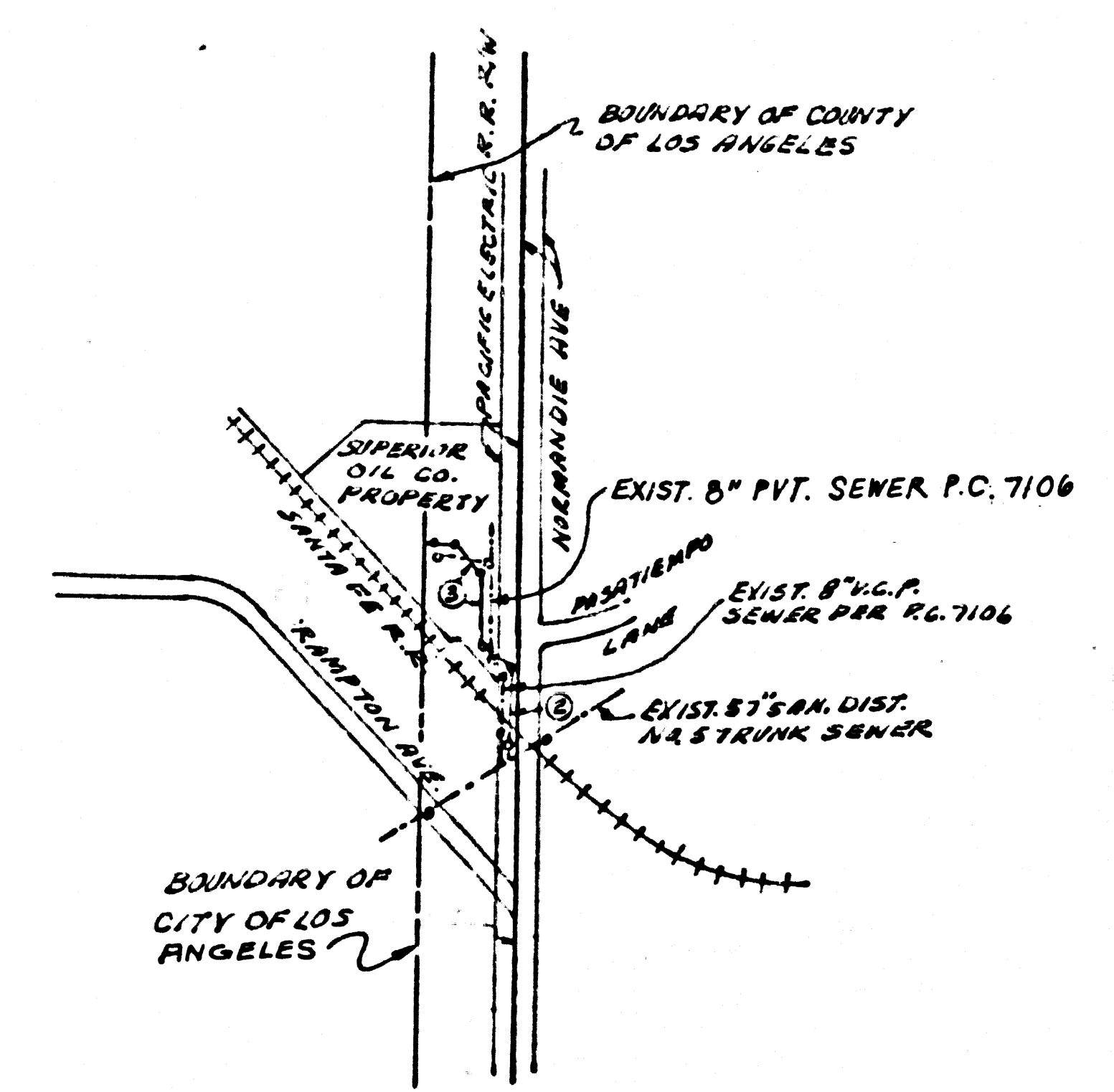
49716

49929

DOUBLE SCALE
GENERAL NOTES CONT.
 12. CONTRACTOR TO OBTAIN PERMIT FROM L.A. COUNTY FLOOD CONTROL DISTRICT.

REVISION NR. 1 DATE: OCTOBER 16, 1981
 PAGE 2 - MOVED M.H. TO STA. 1160 FROM STA. 1150.
 - ADDED 40' V.C., P.I. AT STA. 9+11.00.
 - REVISED SLOPE, STA. 9+78.00 TO 9+91.00, TO 5.96%.
 - REVISED SLOPE, STA. 1165.00 TO 12+11.00, TO 2.20%.
 - REVISED SLOPE, STA. 1158.00 TO 1100.00, TO 3.44%.
 - REVISED INLET AND OUTLET GRADES ON M.H. AT STA. 9+80.00, TO 91' AND 91'0.2".
 - REVISED SLOPE, STA. 4+47.78 TO 3+80.00, TO 8.32%.
 - REVISED PIPE SIZE TO 12" V.C.P. 212' L.P. STA. 1158.00 TO 1100.00.
 APPROVED: *Dolph D. [Signature]* 10/16/81
 DEPUTY COUNTY ENGINEER

B.M. C.Y. 9693 ELEV. 56.061
 11470 B.C.R. C. ST. CORNER
 SEPULVEDA BLVD & NORMANDIE
 AVE., 44' S. & 105' E. 2 INT.
 GARDENA QUAD. 1975



INDEX MAP
 SCALE: 1"=400'
 P.C. 9964

NO CONNECTION FOR THE DISPOSAL OF INDUSTRIAL WASTES SHALL BE MADE TO SEWERS SHOWN ON THESE DRAWINGS UNTIL A PERMIT FOR INDUSTRIAL WASTEWATER DISCHARGE HAS BEEN ISSUED BY THE SANITATION DISTRICTS FOR SAID CONNECTION.
 BEFORE BREAKING INTO OR CONSTRUCTION ON A COUNTY SANITATION DISTRICT SEWER AND PRIOR TO FINAL ACCEPTANCE OF THE PROJECT, SANITATION DISTRICT INSPECTOR SHALL BE NOTIFIED BY PHONE 992-2805, 638-1161 SO THAT REQUIRED INSPECTION CAN BE MADE.

16. Prior to construction the contractor shall make exploratory excavations to determine the depth and location of all existing utilities and lines and notify the engineer of any discrepancy with the information shown on these plans.

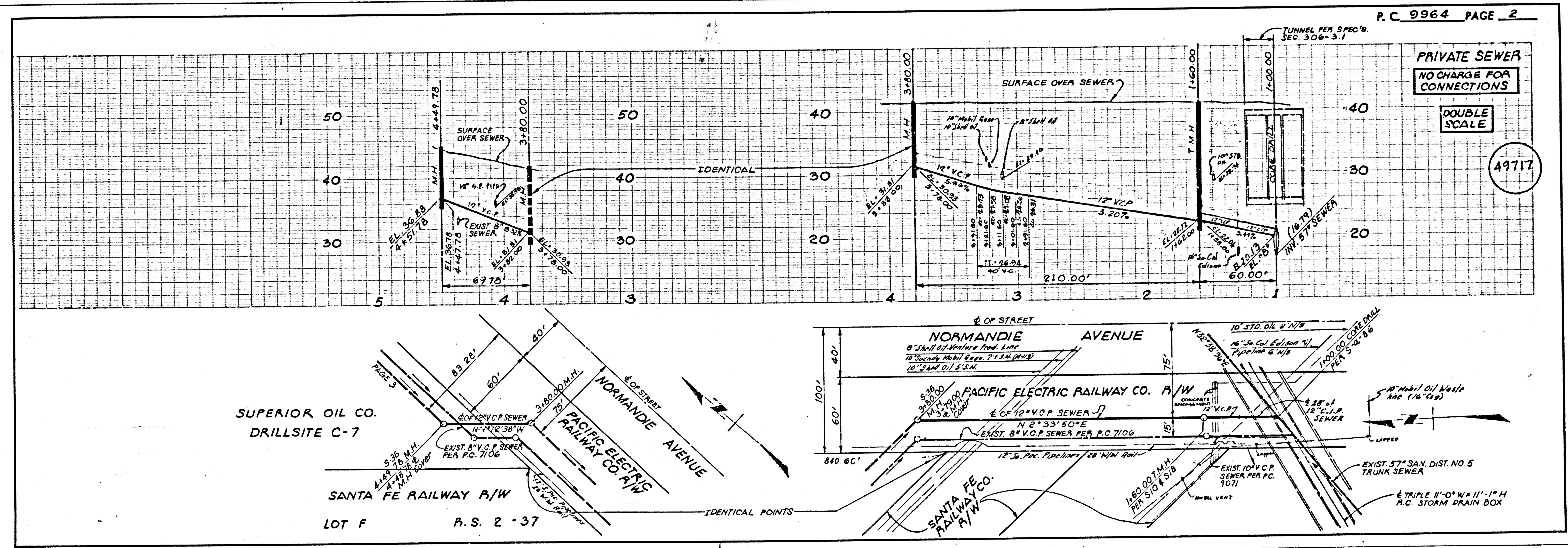
- GENERAL NOTES:**
- ELEVATIONS ARE IN FEET ABOVE U.S.C. & G.S. MEAN LEVEL DATUM OF 1988.
 - NO REVISIONS SHALL BE MADE IN THESE PLANS WITHOUT THE APPROVAL OF THE COUNTY ENGINEER.
 - NO REPRESENTATIVE OF THE COUNTY ENGINEER WILL SURVEY OR LAY OUT ANY PORTION OF THE WORK.
 - GRADES TO WHICH THIS IMPROVEMENT IS TO BE CONSTRUCTED ARE SHOWN ON PLANS AND PROFILES GRADE POINTS FOR TOP OF CURBS, CENTER LINE OF STREETS, OR CENTER LINE OF ALLEYS ARE SHOWN BY CIRCLES OR SQUARES AT ALL POINTS BETWEEN DESIGNATED POINTS THE GRADE SHALL BE ESTABLISHED SO AS TO CONFORM TO A STRAIGHT LINE DRAWN BETWEEN SAID DESIGNATED POINTS.
 - THE PRIVATE ENGINEER SHALL FURNISH THE COUNTY ENGINEER WITH GRADE SHEETS AND STATIONING FOR ALL HOUSE LATERALS AND 12" OR 14" BRANCHES AND SHALL PROVIDE STAKES FOR THEM AT THEIR PROPOSED LOCATIONS WITH STATIONING PLANT MARKED. ALL HOUSE LATERALS SHALL BE CONSTRUCTED IN A STRAIGHT ALIGNMENT AT RIGHT ANGLES FROM THE MAIN LINE SEWER EXCEPT AS SHOWN ON THE PLANS. HOUSE LATERALS FROM CHIMNEYS SHALL NOT HAVE AN ANGLE OF LESS THAN 45° WITH THE MAIN LINE SEWER. ANY CHANGE IN ALIGNMENT SHALL BE REQUESTED IN WRITING BY THE PRIVATE ENGINEER.
 - THE PRIVATE ENGINEER SHALL FURNISH THE HOUSE LATERAL DEPTH AT THE PROPERTY LINE BELOW THE TOP OF CURB ELEVATION FOR EACH HOUSE LATERAL ON THE GRADE SHEET.
 - BEFORE WORK CAN BE STARTED, THE CONTRACTOR MUST OBTAIN A PERMIT TO EXCAVATE IN COUNTY STREETS FROM THE L.A. COUNTY ROAD DEPT., DISTRICT OFFICE NO. _____, AND PAY A FEE TO THE COUNTY ENGINEER, 800 S. VERNON AVENUE, LOS ANGELES, CA 90008, TO COVER THE COST OF CONSTRUCTION INSPECTION AND RECORD PLANS.
 - IF WORK IS TO BE DONE IN A STATE HIGHWAY, A PERMIT MUST BE OBTAINED FROM THE STATE OF CALIFORNIA, DIVISION OF HIGHWAYS, 120 SOUTH SPRING STREET, LOS ANGELES, CALIFORNIA.
 - APPROVAL OF THIS PLAN BY THE COUNTY OF LOS ANGELES DOES NOT CONSTITUTE A REPRESENTATION AS TO THE ACCURACY OF THE LOCATION OF OR THE EXISTENCE OR NON-EXISTENCE OF ANY UNDERGROUND UTILITY PIPE, OR STRUCTURE WITHIN THE LIMITS OF THIS PROJECT. THIS NOTE APPLIES TO ALL PAGES.
 - REFER TO SECTION 7-6.41 OF THE STANDARD SPECIFICATIONS, REGARDING SAFETY ORDERS.
 - PRIOR TO THE ISSUANCE OF THE REQUIRED SEWER CONSTRUCTION PERMIT, THE CONTRACTOR SHALL OBTAIN AND FILE WITH THE COUNTY ENGINEER COPIES OF A PERMIT TO EXCAVATE COUNTY STREETS FROM THE LOS ANGELES COUNTY ROAD DEPARTMENT, A PERMIT FOR EXCAVATIONS AND TRENCHES FROM THE STATE OF CALIFORNIA, DIVISION OF INDUSTRIAL SAFETY AND A CERTIFICATE OF WORKERS COMPENSATION INSURANCE WITH THE DEPARTMENT OF COUNTY ENGINEER, 800 SOUTH VERNON, P.O. BOX 100, LOS ANGELES, CALIFORNIA 90008, NAMED AS THE CERTIFICATE HOLDER TO BE NOTIFIED 30 DAYS PRIOR TO CANCELLATION OF POLICY, AND SUBMIT A COPY OF THE POLICY CLASSIFICATION FROM THE D.C.S. FOR THE TRENCH WORK SPECIFIED ON THE PLANS.

- CONSTRUCTION NOTES:**
- WORK SHALL BE CONSTRUCTED ACCORDING TO THE STANDARD SPECIFICATIONS FOR PUBLIC WORKS CONSTRUCTION (1978 EDITION WITH SUPPLEMENTS) AND COUNTY ENGINEER SPECIAL PROVISIONS FOR THE CONSTRUCTION OF SANITARY SEWERS DATED SEPTEMBER, 1979 AND SHALL BE PROSECUTED ONLY IN THE PRESENCE OF THE COUNTY ENGINEER.
 - THE CONTRACTOR SHALL NOTIFY THE ENVIRONMENTAL DEVELOPMENT DIVISION BY TELEPHONE 728-2188, AT LEAST TWENTY-FOUR HOURS BEFORE STARTING ANY WORK UNDER THIS CONTRACT.
 - HOUSE LATERALS TO BE CONSTRUCTED WITH INVERTS AT PROPERTY LINE 5 FEET BELOW CURB GRADE EXCEPT AS NOTED.
 - WYE OR TEE BRANCHES MAY BE USED FOR CONNECTIONS TO MAINLINE SEWERS EXCEPT AS NOTED.
 - ALL STRUCTURES SHALL BE EITHER BRICK MANHOLES PER 8-3 OR PRECAST CONCRETE MANHOLES PER 8-3, EXCEPT AS NOTED.
 - PROVIDE STAKES ON THE PROPERTY LINE OR PROPERTY LINES PRODUCED AT RIGHT ANGLES TO THE SEWER LINE AT THE CENTER LINE OF EACH MANHOLE.
 - MANHOLE TOPS IN UNIMPROVED PORTS OF WAY TO BE SIX INCHES ABOVE FINISHED GRADE.
 - WITHEFIED CLAY PIPE JOINTS SHALL BE TYPE "D" OR "E" PER STANDARD SPECIFICATIONS SECTION 208-2.
 - IF A POWER POLE IS WITHIN THREE FEET OF THE SEWER, THE SEWER SHALL BE ENCASED, PER 8-3.2, CASE 8, TWO FEET ON EACH SIDE FROM THE POINT OF INTERFERENCE.
 - IF DURING THE COURSE OF CONSTRUCTION IT IS DETERMINED THAT THERE IS LESS THAN FOUR FEET OF COVER OVER THE TOP OF A MAIN LINE OR HOUSE LATERAL SEWER WHICH IS NOT INDICATED ON THE PLANS, THE PIPE SHALL BE ENCASED PER 8-3.2, CASE 8 UNLESS OTHERWISE APPROVED BY THE COUNTY ENGINEER.
 - ALL JOINTS BETWEEN CAST IRON PIPE AND WITHEFIED CLAY PIPE SHALL BE MADE WITH A RUBBER JOINT, TYPE "C" OR "D", (WITH BUSHING IF NECESSARY) PER STANDARD SPECIFICATIONS, SECTION 208-2.
 - SEWERS TO BE TESTED FOR LEAKAGE PER SECTION 208-1.4 OF THE STANDARD SPECIFICATIONS AND SPECIAL PROVISIONS.
 - REINFORCE ALL TRENCHES WITHIN PAVED AREAS TO MEET L.A. COUNTY ROAD DEPT. OR CALIFORNIA STATE HIGHWAY REQUIREMENTS IN ACCORDANCE WITH PERMITS.
 - FULL COMPLIANCE WITH SECTION 208-1.5 OF THE SPECIAL PROVISIONS WILL BE REQUIRED FOR BACKFILL IN STREETS. CERTIFICATION OF BACKFILL COMPACTION AND BOND EQUIVALENTS BY A QUALIFIED, REGISTERED TESTING LABORATORY SHALL BE PROVIDED BY THE SUBMITTEE PRIOR TO THE ISSUANCE OF A CERTIFICATE OF PARTIAL ACCEPTANCE.
 - SPECIAL BACKFILL IN EASEMENT CONSTRUCTION: (A) BACKFILL TRENCH AND REPLACE OTHER EARTH SO AS TO ACHIEVE THE NATURAL OR FINISHED GRADES AND SLOPES SHOWN ON THE GRADING PLAN APPROVED FOR THIS DEVELOPMENT BY THE BUILDING AND SAFETY DIVISION; (B) ALL BACKFILL AND EARTH REPLACED SHALL BE COMPACTED TO 98% OF MAXIMUM DENSITY PER A.B.T.M. 875. METHOD OF TEST ORIENT AS MODIFIED. ACCEPTABLE CERTIFICATE OF SUCH COMPACTION SHALL BE SUBMITTED TO THE ENVIRONMENTAL DEVELOPMENT DIVISION.

THE FOLLOWING LATEST REVISION STANDARD PLANS ON FILE IN THE OFFICE OF THE COUNTY ENGINEER SHALL APPLY IN THE CONSTRUCTION OF THIS PROJECT.

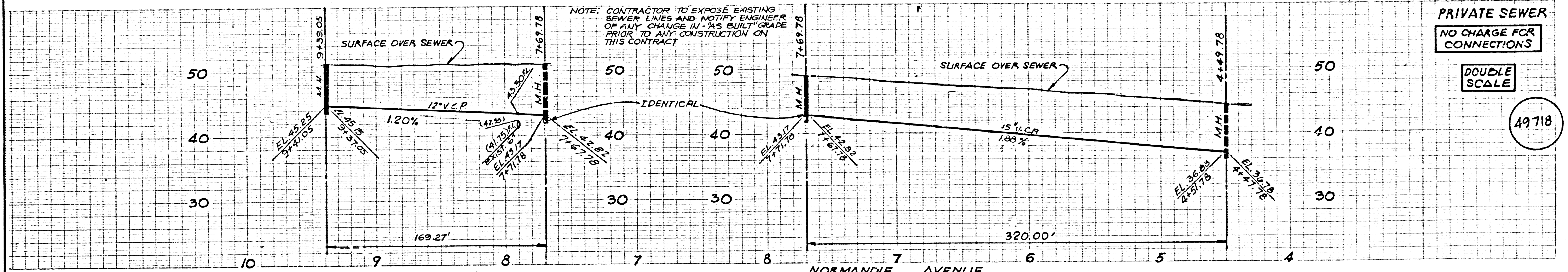
MOBILITY	8-1
MINIMUM PUBLIC SAFETY REQUIREMENTS	8-2
BRICK MANHOLES	8-3
STANDARD MANHOLE STEP	8-17
WORKING FOR SEWER PIPE	8-21
CHASING AND ENCASING	8-28
WYE OR TEE SUPPORT	8-30
ALLOWABLE TRENCH WIDTHS	8-38
LOADING MANHOLE FRAMES AND COVERS	8-39
NON-STRUCTURAL PRECAST CONCRETE MANHOLES	8-40
TRAP MANHOLE BASES	8-40
TRAP MANHOLE CRISTING	8-18

COUNTY OF LOS ANGELES, CALIFORNIA
 STEPHEN J. KOONCE, COUNTY ENGINEER WALTER E. GARRISON, CHIEF ENGINEER
 APPROVE: *Michael [Signature]* 9-11-81 APPROVE: *Frank [Signature]* 9/16/81
 CHECKED: *Alger [Signature]* 8/11/81
 REG. C. E. NO. 16797
 LOMITA BLDG. DIST. 12



SH 15'

2

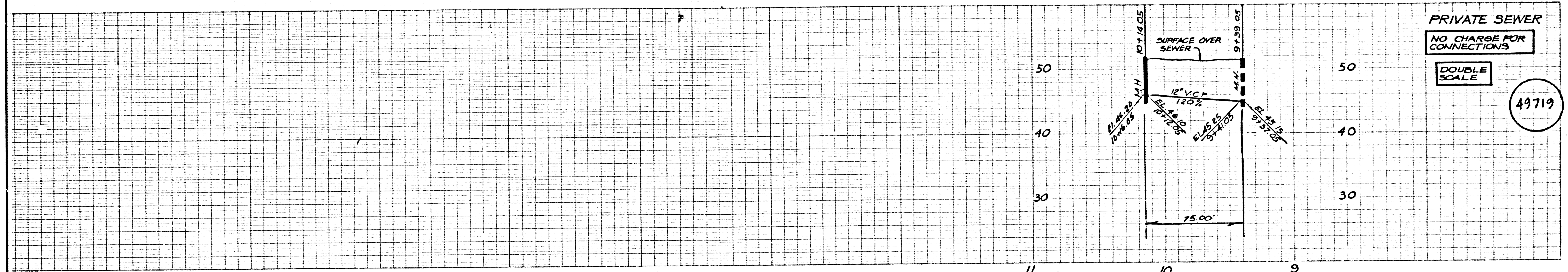
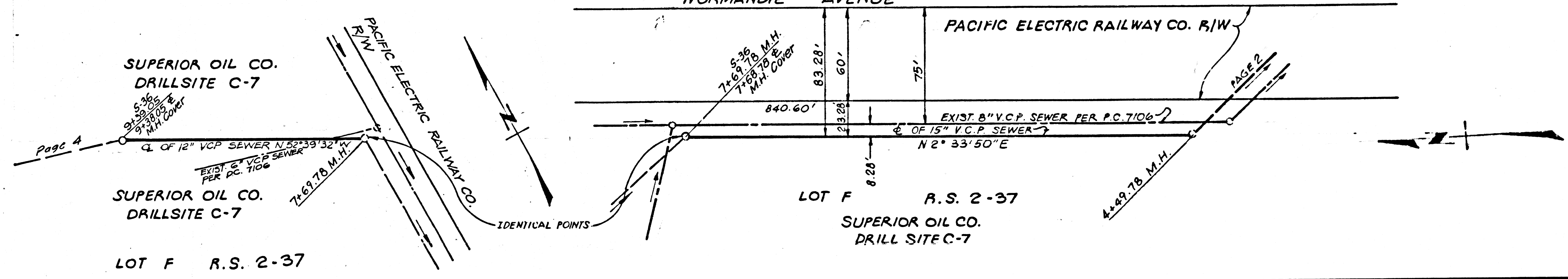


PRIVATE SEWER
NO CHARGE FOR CONNECTIONS

DOUBLE SCALE

49718

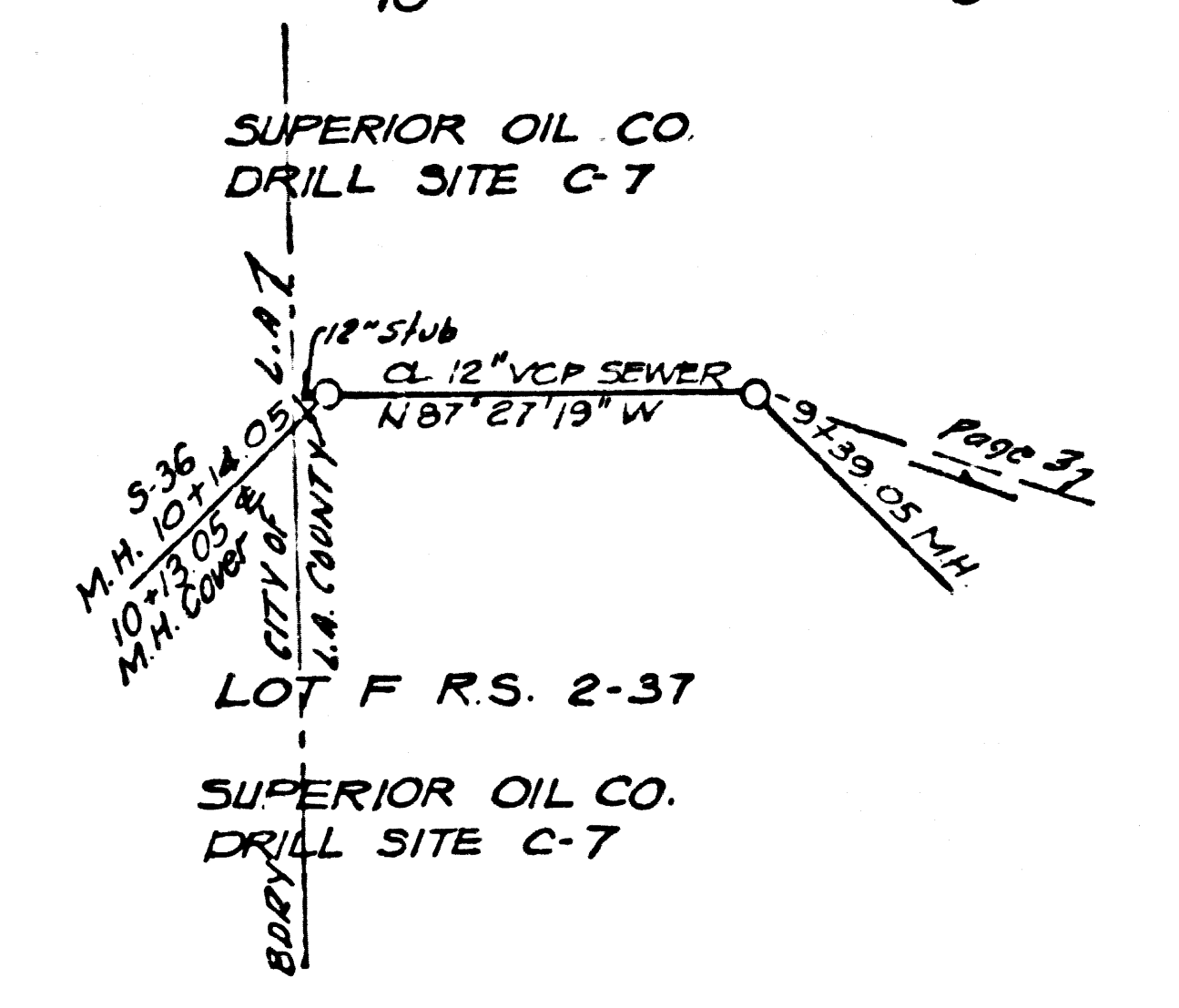
PAGE 3A



PRIVATE SEWER
NO CHARGE FOR CONNECTIONS

DOUBLE SCALE

49719



HW HB

SH 18'