

B.M. BL 3988 ELEV. 1184.526
USC 833 MON. & NW COR. BRIDGE
NO. B 1778 17 FT. N. C/L PARKER
RD. & 20 FT. E. GOLDEN STATE
FRWY. ON-RAMP MKD. F1219 1971
NEWHALL QUAD. 1972.

DOUBLE SCALE

GENERAL NOTES:

- ELEVATIONS ARE IN FEET ABOVE U.S.C. & G.S. SEA LEVEL DATUM OF 1929
- NO REVISIONS SHALL BE MADE IN THESE PLANS WITHOUT THE APPROVAL OF THE COUNTY ENGINEER
- NO REPRESENTATIVE OF THE COUNTY ENGINEER WILL SURVEY OR LAY OUT ANY PORTION OF THE WORK
- GRADES TO WHICH THIS IMPROVEMENT IS TO BE CONSTRUCTED ARE SHOWN ON PLANS AND PROFILES. GRADE POINTS FOR TOP OF CURBS, CENTER LINE OF STREETS, OR CENTER LINE OF ALLEYS ARE SHOWN BY CIRCLES ON PROFILES. AT ALL POINTS BETWEEN DESIGNATED POINTS THE GRADE SHALL BE ESTABLISHED SO AS TO CONFORM TO A STRAIGHT LINE DRAWN BETWEEN SAID DESIGNATED POINTS
- THE PRIVATE ENGINEER SHALL FURNISH THE COUNTY ENGINEER WITH GRADE SHEETS AND STATIONING FOR ALL HOUSE LATERALS AND "T" OR "Y" BRANCHES AND SHALL PROVIDE STAKES FOR THESE AT THEIR PROPER LOCATIONS WITH STATIONING PLAINLY MARKED. ALL HOUSE LATERALS SHALL BE CONSTRUCTED IN A STRAIGHT ALIGNMENT AT RIGHT ANGLES FROM THE MAIN LINE SEWER EXCEPT AS SHOWN ON THE PLANS. HOUSE LATERALS FROM CHIMNEYS SHALL NOT HAVE AN ANGLE OF LESS THAN 45° WITH THE MAIN LINE SEWER. ANY CHANGE IN ALIGNMENT SHALL BE REQUESTED IN WRITING BY THE PRIVATE ENGINEER.
- THE PRIVATE ENGINEER SHALL FURNISH THE HOUSE LATERAL DEPTH AT THE PROPERTY LINE BELOW THE TOP OF CURB ELEVATION FOR EACH HOUSE LATERAL ON THE GRADE SHEET.
- BEFORE WORK CAN BE STARTED, THE CONTRACTOR MUST OBTAIN A PERMIT TO EXCAVATE IN COUNTY STREETS FROM THE L.A. COUNTY ROAD DEPT., DISTRICT OFFICE NO. _____, AND PAY A FEE TO THE COUNTY ENGINEER, 800 S. VERMONT AVENUE, LOS ANGELES, CA 90001, TO COVER THE COST OF CONSTRUCTION INSPECTION AND RECORD PLANS.
- IF WORK IS TO BE DONE IN A STATE HIGHWAY, A PERMIT MUST BE OBTAINED FROM THE STATE OF CALIFORNIA, DIVISION OF HIGHWAYS, 130 SOUTH SPRING STREET, LOS ANGELES, CALIFORNIA.
- APPROVAL OF THIS PLAN BY THE COUNTY OF LOS ANGELES DOES NOT CONSTITUTE A REPRESENTATION AS TO THE ACCURACY OF THE LOCATION OR OF THE EXISTENCE OR NON-EXISTENCE OF ANY UNDERGROUND UTILITY PIPE, OR STRUCTURE WITHIN THE LIMITS OF THE PROJECT. THIS NOTE APPLIES TO ALL PAGES.
- REFER TO SECTION 7.16.4 OF THE STANDARD SPECIFICATIONS, REGARDING SAFETY ORDERS.
- PRIOR TO THE ISSUANCE OF THE REQUIRED SEWER CONSTRUCTION PERMIT, THE CONTRACTOR SHALL OBTAIN AND FILE WITH THE COUNTY ENGINEER COPIES OF A PERMIT TO EXCAVATE IN COUNTY STREETS FROM THE LOS ANGELES COUNTY ROAD DEPARTMENT, A PERMIT FOR EXCAVATIONS AND TRENCHES FROM THE STATE OF CALIFORNIA, DIVISION OF INDUSTRIAL SAFETY AND A CERTIFICATE OF WORKER'S COMPENSATION INSURANCE WITH THE DEPARTMENT OF COUNTY ENGINEER, 800 SOUTH VERMONT, RM. 408, LOS ANGELES, CALIFORNIA 90008, NAMED AS THE CERTIFICATE HOLDER TO BE NOTIFIED 30 DAYS PRIOR TO CANCELLATION OF POLICY.

SANITARY SEWERS

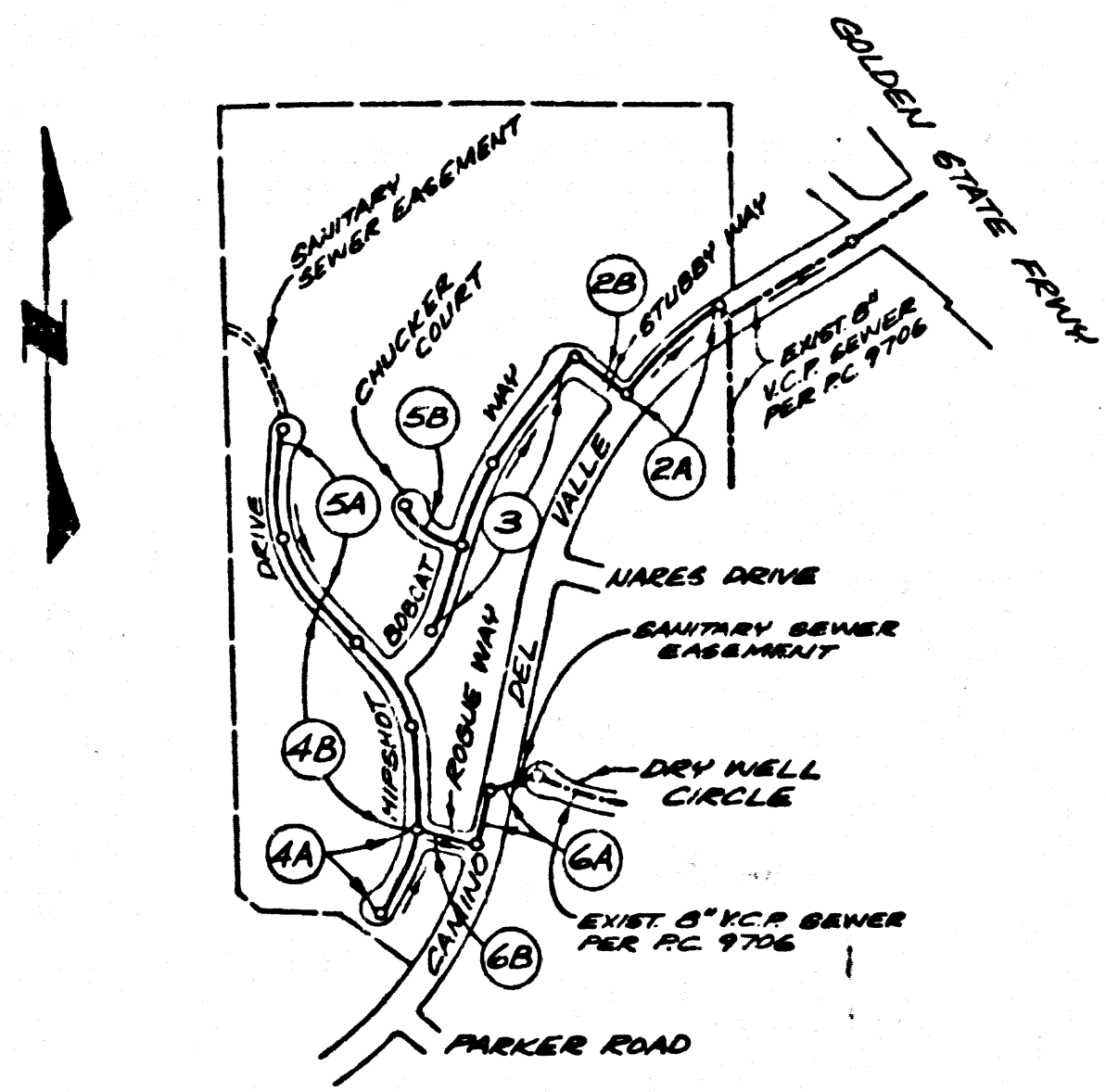
TO BE CONSTRUCTED IN

TRACT NO. 37586
PRIVATE CONTRACT NO. 9972

W.S. 77
3 SHEETS, 6 PAGES

49919

SCALE: VERT. 1" = 4'
HORIZ. 1" = 40'
MARCH, 1981
PREPARED IN THE OFFICES OF
PFEILER & ASSOCIATES ENGINEERS
1559 W. COMMONWEALTH AVE., FULLERTON CALIFORNIA 92633
BY: *W.D. Pfeiler*
REG. C.E. No. 12507



INDEX MAP
P.C. 9972 TRACT NO. 37586
SCALE: 1" = 600'

REVISION No. 1 DATE 5/16/82
REVISED SEWER PLAN & PROFILE
ON PAGES 2-A, 2-B, 3 & 5-3
APPROVED *Edward J. Volz*
OFFICE OF COUNTY ENGINEER

NO CONNECTION FOR THE DISPOSAL OF INDUSTRIAL WASTES
SHALL BE MADE TO SEWERS SHOWN ON THESE DRAWINGS UNTIL
A PERMIT FOR INDUSTRIAL WASTEWATER DISCHARGE HAS BEEN
ISSUED BY THE SANITATION DISTRICTS FOR SAID CONNECTION.
BEFORE BREAKING INTO OR CONSTRUCTION ON A COUNTY
SANITATION DISTRICT SIDE AND PRIOR TO FINAL
ACCEPTANCE OF THE PROJECT, SANITATION DISTRICT
INSPECTOR SHALL BE NOTIFIED BY PHONE - 962-8605,
OR BY MAIL, SO THAT REQUIRED INSPECTION CAN BE MADE.

CONSTRUCTION NOTES:

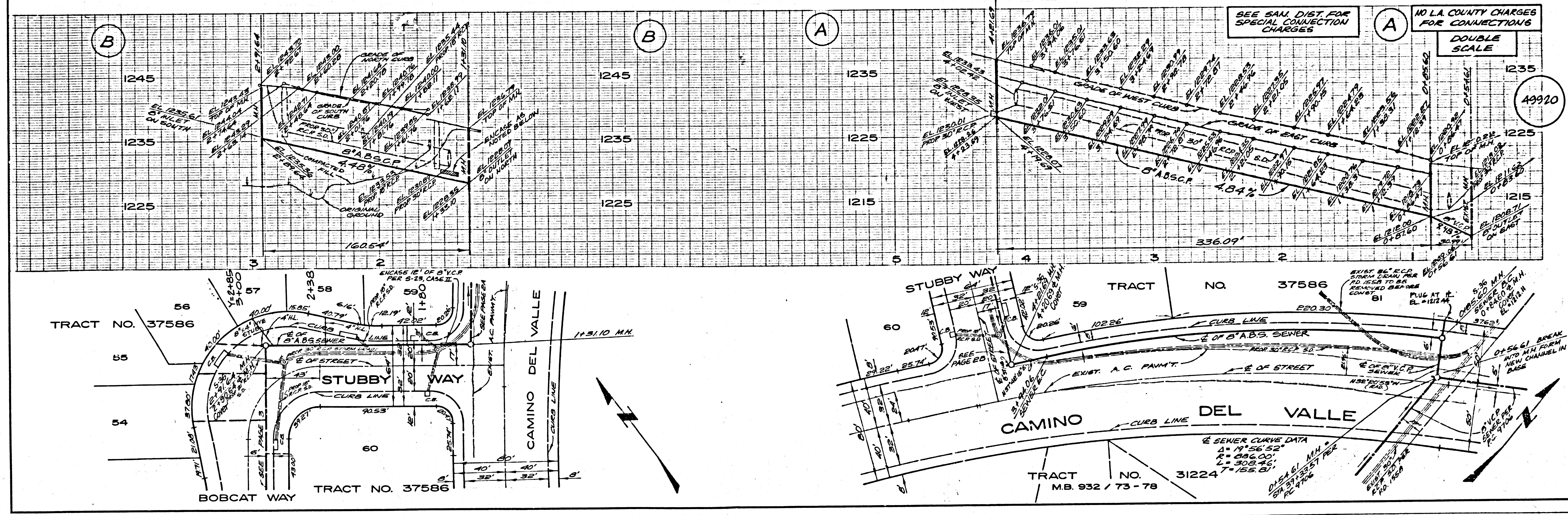
- WORK SHALL BE CONSTRUCTED ACCORDING TO THE STANDARD SPECIFICATIONS FOR PUBLIC WORKS CONSTRUCTION (1978 EDITION WITH SUPPLEMENTS) AND COUNTY ENGINEER SPECIAL PROVISIONS FOR THE CONSTRUCTION OF SANITARY SEWERS DATED 12/1/78. ALL NOTES SHALL BE PROSECUTED ONLY IN THE PRESENCE OF THE COUNTY ENGINEER.
- THE CONTRACTOR SHALL NOTIFY THE ENVIRONMENTAL DEVELOPMENT DIVISION BY TELEPHONE, 708-5148, AT LEAST TWENTY-FOUR HOURS BEFORE STARTING ANY WORK UNDER THIS CONTRACT.
- HOUSE LATERALS TO BE CONSTRUCTED WITH INVERTS AT PROPERTY LINE 8 FEET BELOW CURB GRADE EXCEPT AS NOTED.
- WYE OR TEE BRANCHES MAY BE USED FOR CONNECTIONS TO MAINLINE SEWERS EXCEPT AS NOTED.
- ALL STRUCTURES SHALL BE EITHER BRICK MANHOLES PER S-30 OR PRECAST CONCRETE MANHOLES PER S-36, EXCEPT AS NOTED.
- PROVIDE STAKES ON THE PROPERTY LINE OR PROPERTY LINES PRODUCED AT RIGHT ANGLES TO THE SEWER LINE AT THE CENTER LINE OF EACH MANHOLE.
- MANHOLE TOPS IN UNIMPROVED RIGHTS OF WAY TO BE SIX INCHES ABOVE FINISHED GRADE.
- VITRIFIED CLAY PIPE JOINTS SHALL BE TYPE "D" OR "E" PER STANDARD SPECIFICATIONS SECTION 308-2.
- IF A POWER POLE IS WITHIN THREE FEET OF THE SEWER, THE SEWER SHALL BE ENCASED, PER S-23, CASE II, TWO FEET ON EACH SIDE FROM THE POINT OF INTERFERENCE.
- IF DURING THE COURSE OF CONSTRUCTION IT IS DETERMINED THAT THERE IS LESS THAN FOUR FEET OF COVER OVER THE TOP OF A MAIN LINE OR HOUSE LATERAL SEWER WHICH IS NOT INDICATED ON THE PLANS, THE PIPE SHALL BE ENCASED PER S-23, CASE II UNLESS OTHERWISE APPROVED BY THE COUNTY ENGINEER.
- ALL JOINTS BETWEEN CAST IRON PIPE AND VITRIFIED CLAY PIPE SHALL BE MADE WITH A RUBBER SLEEVE JOINT, TYPE "C" OR "D", WITH RUSHING IF NECESSARY PER STANDARD SPECIFICATIONS SECTION 308-1.
- SEWERS TO BE TESTED FOR LEAKAGE PER SECTION 308-1.4 OF THE STANDARD SPECIFICATIONS AND SPECIAL PROVISIONS.
- RESURFACE ALL TRENCHES WITHIN PAVED AREAS TO MEET L.A. COUNTY ROAD DEPT. OR CALIFORNIA STATE HIGHWAY REQUIREMENTS IN ACCORDANCE WITH PERMITS.
- FULL COMPLIANCE WITH SECTION 308-1.33 OF THE SPECIAL PROVISIONS WILL BE REQUIRED FOR BACKFILL IN STREETS. CERTIFICATION OF BACKFILL COMPACTION AND SAND EQUIVALENTS BY A QUALIFIED, REGISTERED TESTING LABORATORY SHALL BE PROVIDED BY THE PERMITTEE PRIOR TO THE ISSUANCE OF A CERTIFICATE OF PARTIAL ACCEPTANCE.
- SPECIAL BACKFILL IN EASEMENT CONSTRUCTION: (A) BACKFILL TRENCH AND REPLACE OTHER EARTH SO AS TO ACHIEVE THE NATURAL OR FINISHED GRADES AND SLOPES SHOWN ON THE GRADING PLAN APPROVED FOR THE DEVELOPMENT BY THE BUILDING AND SAFETY DIVISION. (B) ALL BACKFILL AND EARTH REPLACED SHALL BE COMPACTED TO A MINIMUM OF 90% OF MAXIMUM DENSITY PER A.S.T.M. STD. METHOD OF TEST D698, AS MODIFIED. ACCEPTABLE CERTIFICATION OF SUCH COMPACTION SHALL BE SUBMITTED TO THE ENVIRONMENTAL DEVELOPMENT DIVISION.

THE FOLLOWING LATEST REVISED STANDARD PLANS ON FILE IN THE OFFICE OF THE COUNTY ENGINEER SHALL APPLY IN THE CONSTRUCTION OF THIS PROJECT.

LEGEND	S-1
MINIMUM PUBLIC SAFETY REQUIREMENTS	S-2
BRICK MANHOLE	S-3
STANDARD MANHOLE STEP	S-17
SHOULDER FOR SEWER PIPE	S-29
CHASING AND BRACEMENT	S-30
WYE OR TEE SUPPORT	S-36
ALLOWABLE TRENCH WIDTHS	S-38
LOADING MANHOLE FRAMES AND COVERS	S-48
NON-MANHOLE PRECAST CONCRETE MANHOLES	S-50
SPECIAL HOUSE LATERALS	S-55

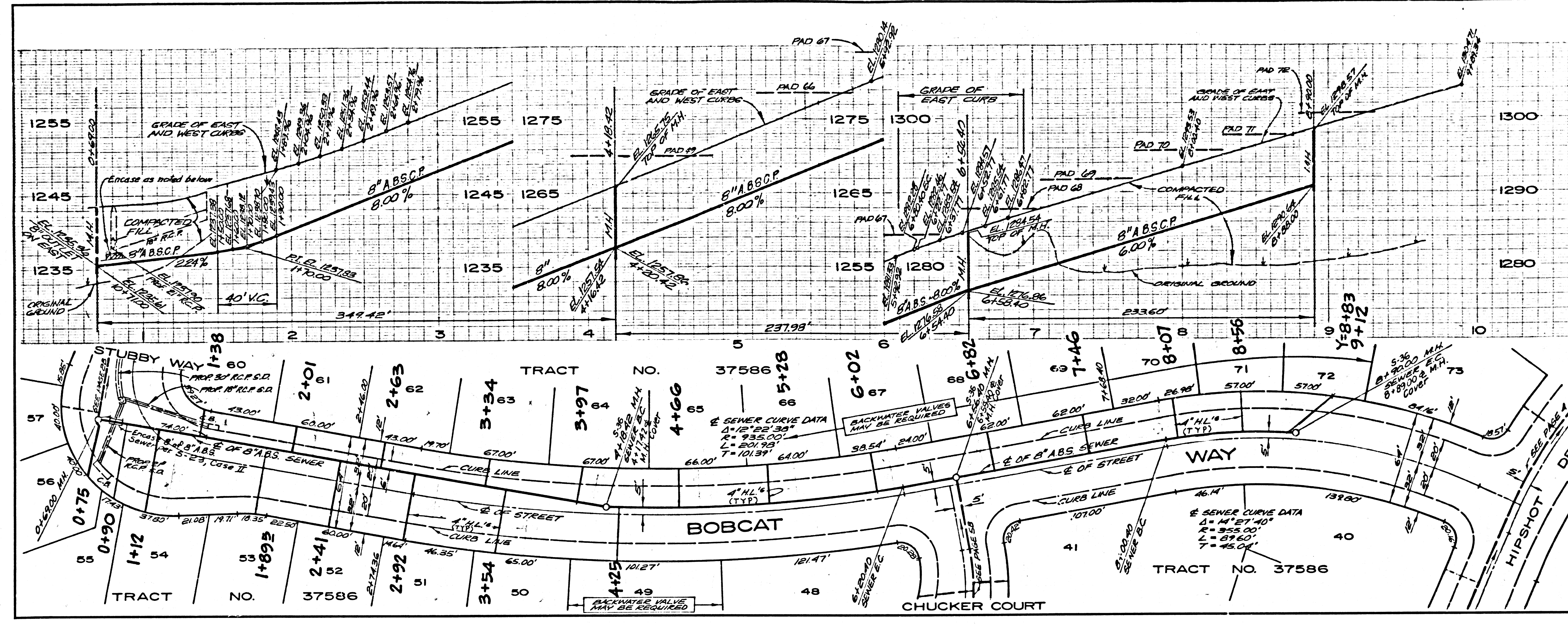
COUNTY OF LOS ANGELES, CALIFORNIA
STEPHEN J. KOONCE, COUNTY ENGINEER WALTER E. GARRISON, CHIEF ENGINEER
APPROVED *Walter E. Garrison* 1-21-82 DATE APPROVED *Frank R. ...* 1/22/82
CHECKED *Ralph David Quint* 1/17/82 DATE
REG. C.E. NO. 16553
SANTA CLARITA VALLEY BLDG. DIST. 22

STRE 29



SEE SAN. DIST. FOR SPECIAL CONNECTION CHARGES
NO L.A. COUNTY CHARGES FOR CONNECTIONS
DOUBLE SCALE
49920

88272 ON TRACT



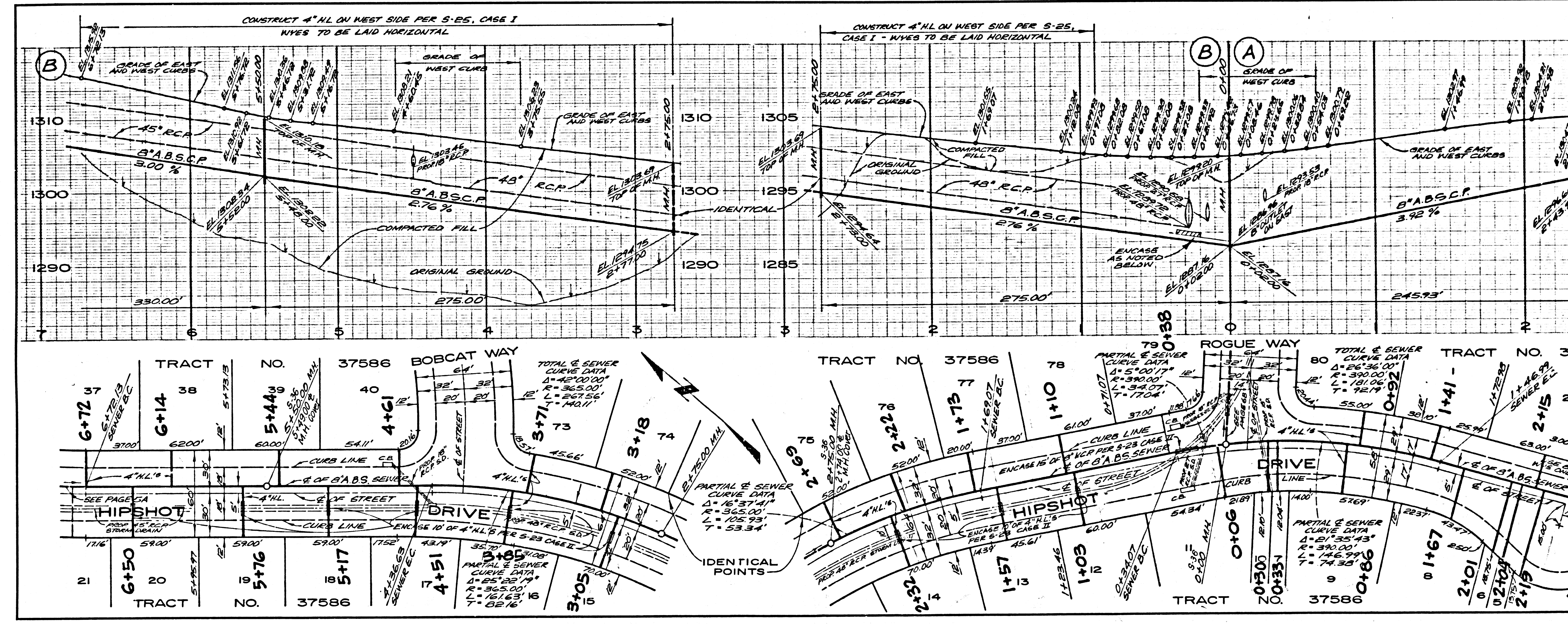
NO L.A. COUNTY CHARGE FOR CONNECTIONS

DOUBLE SCALE

SEE SAN. DIST. FOR SPECIAL CONNECTION CHARGES

49921

STREE 29



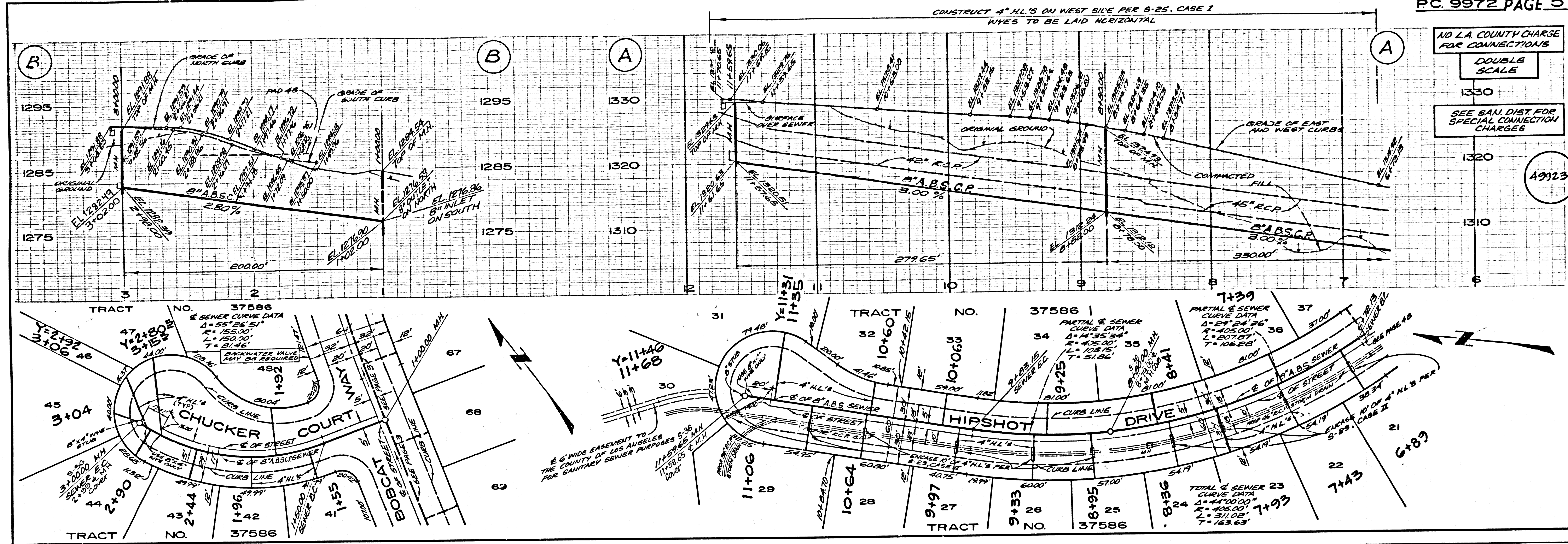
NO L.A. COUNTY CHARGE FOR CONNECTIONS

DOUBLE SCALE

SEE SAN. DIST. FOR SPECIAL CONNECTION CHARGES

49922

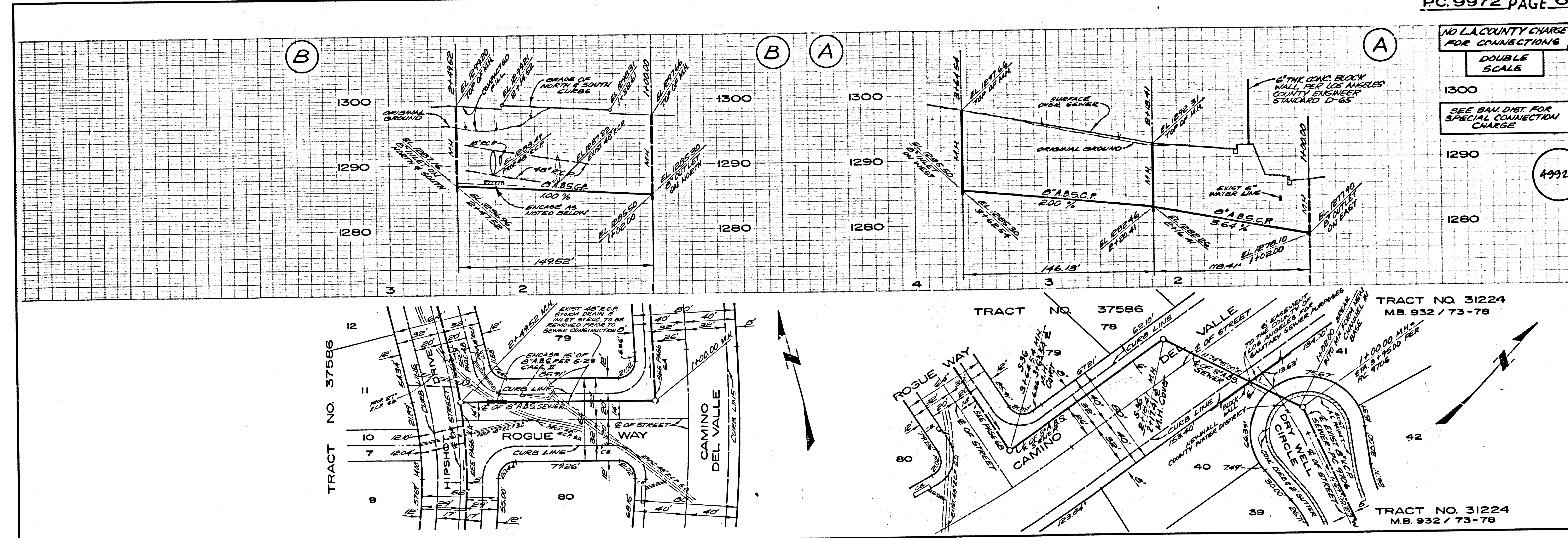
3827E ON TRACT



NO L.A. COUNTY CHARGE FOR CONNECTIONS
 DOUBLE SCALE
 1330
 SEE SAN. DIST. FOR SPECIAL CONNECTION CHARGES

49923

STEP 09



NO L.A. COUNTY CHARGE FOR CONNECTIONS
 DOUBLE SCALE
 1300
 SEE SAN. DIST. FOR SPECIAL CONNECTION CHARGE

49924

887E ON TRACT