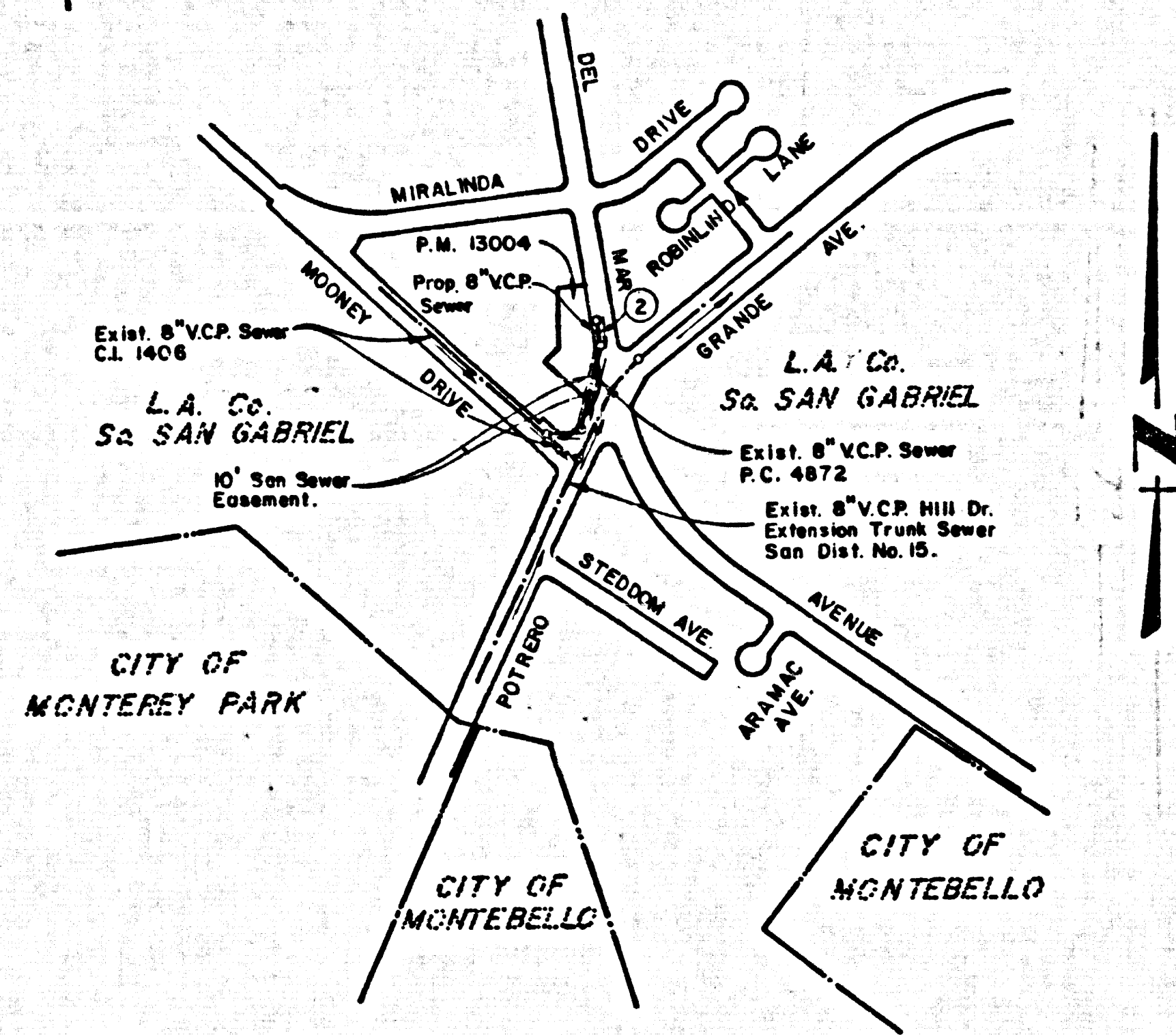


B.M. CY 6747 ELEV. 352.111
1 + BN. 1 FT. S/O BCR AT SW COR.
POTRERO GRANDE DR. & ARROYO DR. 55 FT.
S. 1 40 FT. W. C/L INT. MKD. (B.M.)
RIVERA QUAD. 1975



NOTE:
NUMBER IN CIRCLES INDICATE
PAGE NUMBER.

INDEX MAP
P.C. 9976 PARCEL MAP NO. 13004
SCALE 1" = 600'

PRIVATE ENGINEER'S NOTICE TO CONTRACTOR

The contractor is required to take due precautionary measures to protect the utility lines shown and any other lines not of record or not shown on this drawing.

GENERAL NOTES:

- ELEVATIONS ARE IN FEET ABOVE U.S.C. & G.S. SEA LEVEL DATUM OF 1929.
- NO REVISIONS SHALL BE MADE IN THESE PLANS WITHOUT THE APPROVAL OF THE COUNTY ENGINEER.
- NO REVISIONS SHALL BE MADE IN THESE PLANS WITHOUT THE APPROVAL OF THE COUNTY ENGINEER.
- NO REVISIONS SHALL BE MADE IN THESE PLANS WITHOUT THE APPROVAL OF THE COUNTY ENGINEER.
- GRADES TO WHICH THIS IMPROVEMENT IS TO BE CONSTRUCTED ARE SHOWN ON PLANS AND PROFILES. GRADE POINTS FOR TOP OF CURBS, CENTER LINE OF STREETS, OR CENTER LINE OF ALLEYS ARE SHOWN BY CIRCLES ON PROFILES. AT ALL POINTS BETWEEN DESIGNATED POINTS THE GRADE SHALL BE ESTABLISHED SO AS TO CONFORM TO A STRAIGHT LINE DRAWN BETWEEN SAID DESIGNATED POINTS.
- THE PRIVATE ENGINEER SHALL FURNISH THE COUNTY ENGINEER WITH GRADE SHEETS AND STATIONING FOR ALL HOUSE LATERALS AND "T" OR "Y" BRANCHES AND SHALL PROVIDE STAKES FOR THEM AT THEIR PROPER LOCATIONS WITH STATUTORY PLANNET MARKERS. ALL HOUSE LATERALS SHALL BE CONSTRUCTED IN A STRAIGHT ALIGNMENT AT RIGHT ANGLES FROM THE MAIN LINE SEWER EXCEPT AS SHOWN ON THE PLANS. HOUSE LATERALS FROM CHIMNEYS SHALL NOT HAVE AN ANGLE OF LESS THAN 45° WITH THE MAIN LINE SEWER. ANY CHANGE IN ALIGNMENT SHALL BE REQUESTED IN WRITING BY THE PRIVATE ENGINEER.
- THE PRIVATE ENGINEER SHALL FURNISH THE HOUSE LATERAL NOTHS AT THE PROPERTY LINE BELOW THE TOP OF CURB ELEVATION FOR EACH HOUSE LATERAL ON THE GRADE SHEET.
- BEFORE WORK CAN BE STARTED, THE CONTRACTOR MUST OBTAIN A PERMIT TO EXCAVATE COUNTY STREETS FROM THE L.A. COUNTY ROAD DEPT., DISTRICT OFFICE NO. 1 AND PAY A FEE TO THE COUNTY ENGINEER, 550 So. Vermont Avenue, Los Angeles, Calif., 90020, TO COVER THE COST OF CONSTRUCTION INSPECTION AND RECORD PLANS.
- IF WORK IS TO BE DONE BY A STATE HIGHWAY, A PERMIT MUST BE OBTAINED FROM THE STATE OF CALIFORNIA, DIVISION OF HIGHWAYS, 138 SOUTH SPRING STREET, LOS ANGELES, CALIFORNIA.
- APPROVAL OF THIS PLAN BY THE COUNTY OF LOS ANGELES DOES NOT CONSTITUTE A REPRESENTATION AS TO THE ACCURACY OF THE LOCATION OF OR THE EXISTENCE OR NON-EXISTENCE OF ANY UNDERGROUND UTILITY PIPE, OR STRUCTURE WITHIN THE LIMITS OF THIS PROJECT. THIS NOTE APPLIES TO ALL PAGES.
- REFER TO SECTION 7.16.4.3 OF THE STANDARD SPECIFICATIONS, REGARDING SANITARY ORDERS.
- Prior to the issuance of the required Sewer Construction Permit, the Contractor shall obtain and file with the County Engineer copies of a permit to excavate in County Streets from the Los Angeles County Road Department. A permit for excavation and trenches from the State of California, Division of Industrial Safety and a Certificate of Work Completion prepared by the Department of County Engineer, 550 So. Vermont Avenue, Los Angeles, California 90020, Room 406, Noted as the Certificate holder to be notified 30 Days prior to Completion of Project.

CONSTRUCTION NOTES:

- WORK SHALL BE CONSTRUCTED ACCORDING TO THE STANDARD SPECIFICATIONS FOR PUBLIC WORKS CONSTRUCTION (1978 EDITION) WITH PROVISIONS AND COUNTY ENGINEER SPECIAL PROVISIONS FOR THE CONSTRUCTION OF SANITARY SEWERS DATED 3/29/78, 1/15/78, AND SHALL BE PROCURED ONLY IN THE PRESENCE OF THE COUNTY ENGINEER.
- The contractor shall notify the Environmental Development Division, Telephone (213) 758-2156, AT LEAST TWENTY-FOUR HOURS BEFORE STARTING ANY WORK UNDER THIS CONTRACT.
- HOUSE LATERALS TO BE CONSTRUCTED WITH WYES AT PROPERTY LINE 6 FEET BELOW CURB GRADE EXCEPT AS NOTED.
- WYES ON THE BRANCHES MAY BE USED FOR CONNECTIONS TO MAINLINE SEWERS EXCEPT AS NOTED.
- ALL STRUCTURES SHALL BE EITHER BRICK MANHOLES PER S-3 OR PRECAST CONCRETE MANHOLES PER S-36, EXCEPT AS NOTED.
- PROVIDE STAKES ON THE PROPERTY LINE OR PROPERTY LINES PRODUCED AT RIGHT ANGLES TO THE SEWER LINE AT THE CENTER LINE OF EACH MANHOLE.
- MANHOLE TOPS IN UNIMPROVED RIGHTS OF WAY TO BE SIX INCHES ABOVE FINISHED GRADE.
- VITRIFIED CLAY PIPE JOINTS SHALL BE TYPE "B", "C" OR "D" PER STANDARD SPECIFICATIONS SECTION 306-3.
- IF A POWER POLE IS WITHIN THREE FEET OF THE SEWER, THE SEWER SHALL BE ENCASED, PER S-23, CASE II, TWO FEET ON EACH SIDE FROM THE POINT OF INTERFERENCE.
- IF DURING THE COURSE OF CONSTRUCTION IT IS DETERMINED THAT THERE IS LESS THAN FOUR FEET OF COVER OVER THE TOP OF A MAIN LINE OR HOUSE LATERAL V.C.P. SEWER WHICH IS NOT INDICATED ON THE PLANS, THE PIPE SHALL BE ENCASED PER S-23, CASE II UNLESS OTHERWISE APPROVED BY THE COUNTY ENGINEER.
- ALL JOINTS BETWEEN CAST IRON PIPE AND VITRIFIED CLAY PIPE SHALL BE MADE WITH A RUBBER GREEZE JOINT, TYPE "C" OR "D", WITH GUMMING IF NECESSARY PER STANDARD SPECIFICATIONS, SECTION 306-3.
- SEWERS TO BE TESTED FOR LEAKAGE PER SECTION 306-1.9 OF THE STANDARD SPECIFICATIONS AND SPECIAL PROVISIONS.
- RESURFACE ALL TRENCHES WITHIN PAVED AREAS TO MEET L.A. COUNTY ROAD DEPT. OR CALIFORNIA STATE HIGHWAY REQUIREMENTS IN ACCORDANCE WITH PERMITS.
- FULL COMPLIANCE WITH SECTION 306-1.3.5 OF THE SPECIAL PROVISIONS WILL BE REQUIRED FOR SAFE PUMP IN STREETS. CERTIFICATION OF BACKFILL COMPACTON AND SAND EQUIVALENTS BY A QUALIFIED REGISTERED TESTING LABORATORY SHALL BE PROVIDED BY THE PERMITTEE PRIOR TO THE ISSUANCE OF A CERTIFICATE OF PARTIAL ACCEPTANCE.

NO CONNECTION FOR THE DISPOSAL OF INDUSTRIAL WASTES SHALL BE MADE TO SEWERS SHOWN ON THESE DRAWINGS UNTIL A PERMIT FOR INDUSTRIAL WASTEWATER DISCHARGE HAS BEEN ISSUED BY THE SANITATION DISTRICTS FOR SAID CONNECTION.
BEFORE BREAKING INTO OR CONSTRUCTION ON A COUNTY SANITATION DISTRICT SEWER AND PRIOR TO FINAL ACCEPTANCE OF THE PROJECT, SANITATION DISTRICT INSPECTOR SHALL BE NOTIFIED BY PHONE - 962-8605, 688-5282 SO THAT REQUIRED INSPECTION CAN BE MADE.

PARCEL MAP NO. 13004
PRIVATE CONTRACT NO. 9976

U-32
W.S. 36

1 SHEETS, 2 PAGES

50963

SCALE: VERT. 1" = 6'
HORIZ. 1" = 40'

MAY, 1980

PREPARED IN THE OFFICES OF

LOREN PHILLIPS & ASSOCIATES

1740 E. HUNTINGTON DRIVE

DUARTE, CALIF. 91010 - PH. (213) 359-4511

BY: *Carroll A. Alford*

REG. C. E. NO. 32501

THE FOLLOWING LATEST REVISED STANDARD PLANS ON FILE IN THE OFFICE OF THE COUNTY ENGINEER SHALL APPLY IN THE CONSTRUCTION OF THIS PROJECT:

SECTION	NO.
MINIMUM PUBLIC SAFETY REQUIREMENTS	S-3
BRICK MANHOLE	S-3
STANDARD MANHOLE STEP	S-37
LOADING FOR SEWER PIPE	S-39
CALLING AND ENCASEMENT	S-23
WYE OR TEE SUPPORT	S-36
ALLOWABLE TRENCH WIDTHS	S-36
LOADING MANHOLE FRAME AND COVER	S-36
NON-REINFORCED PRECAST CONCRETE MANHOLE	S-36

COUNTY OF LOS ANGELES, CALIFORNIA
STEPHEN J. KOONCE, COUNTY ENGINEER WALTER E. GARRISON, CHIEF ENGINEER

CO. SAN DIST. NO. 12

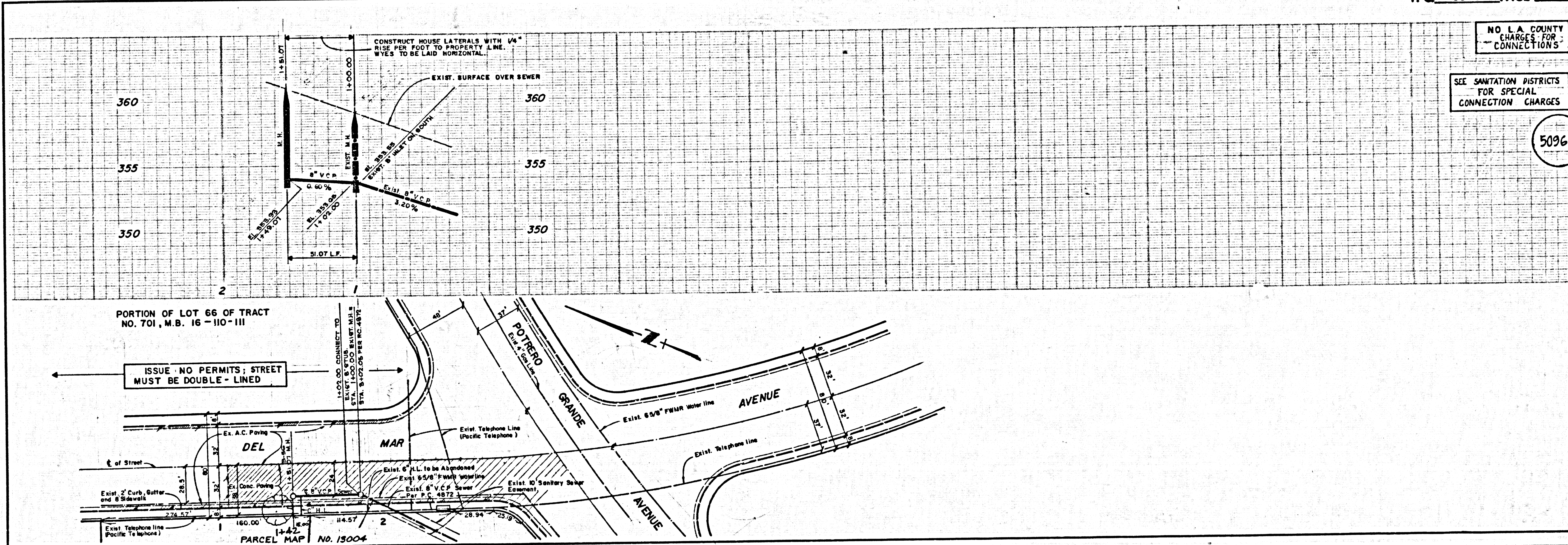
APPROVED *Walter E. Garrison* 4/26/82 DATE

APPROVED *Stephen J. Koonce* 5/14/80 DATE

CHECKED *Robert Davis* 4/26/82 DATE

NO. C.E. NO. 16883

TEMPLE CITY BLDG. DIST. 3



NO L.A. COUNTY CHARGES FOR CONNECTIONS

SEE SANITATION DISTRICTS FOR SPECIAL CONNECTION CHARGES

50964

50963 50964