

# SANITARY SEWERS

TO BE CONSTRUCTED IN

## TRACT No 42555

PRIVATE CONTRACT NO. 10003

W.S. 39-04

50985

1 SHEET, 2 PAGES

SCALE: VERT. 1"=8'  
HORIZ. 1"=40'

SEPTEMBER, 1981

PREPARED IN THE OFFICES OF  
LIND & MILLER INC.  
2065 HUNTINGTON DRIVE  
SAN MARINO CA 91108

REG. C. E. No. 19233

THE FOLLOWING LATEST REVISED STANDARD PLANS ON FILE IN THE OFFICE OF THE COUNTY ENGINEER SHALL APPLY IN THE CONSTRUCTION OF THIS PROJECT:

MINIMUM PUBLIC SAFETY MEASUREMENTS	5-1
STANDARD MANHOLES	5-2
STANDARD MANHOLES WITH	5-3
CHANGING AND ENLARGING	5-4
WYE OR TEE SUPPORT	5-5
ALLOWABLE TRENCH WIDTHS	5-6
LOADING MANHOLES FROM ABOVE COVER	5-7
NON-SHOCKING FIBRE CONCRETE MANHOLES	5-8
SECTIONS REQUIREMENTS FOR PLASTIC PIPE	5-9

COUNTY OF LOS ANGELES, CALIFORNIA  
STEPHEN J. KOONCE, COUNTY ENGINEER  
APPROVED: *Lawrence Miller*  
CHECKED: *Ralph David Dietz*  
SAN DIMAS BLDG. DPT. 10-00

### PRIVATE ENGINEERS NOTICE TO CONTRACTORS

The existence and location of any underground utility pipes or structures shown on these plans are obtained by search of the available records. To the best of our knowledge there are no existing utilities except as shown on these plans. The contractor is required to take due precautionary measures to protect the utility lines shown and any other lines not of record or not shown on these plans.

*J.H.L.*  
Registered Engineer R.C.E.

NO CONNECTION FOR THE DISPOSAL OF INDUSTRIAL WASTES SHALL BE MADE TO SEWERS SHOWN ON THESE DRAWINGS UNTIL A PERMIT FOR INDUSTRIAL WASTEWATER DISCHARGE HAS BEEN ISSUED BY THE SANITATION DISTRICTS FOR SAID CONNECTION.

BEFORE BREAKING INTO OR CONSTRUCTION ON A COUNTY SANITATION DISTRICT SEWER AND PRIOR TO FINAL ACCEPTANCE OF THE PROJECT, SANITATION DISTRICT INSPECTOR SHALL BE NOTIFIED BY PHONE 952-8605, SO THAT REQUIRED INSPECTION CAN BE MADE.

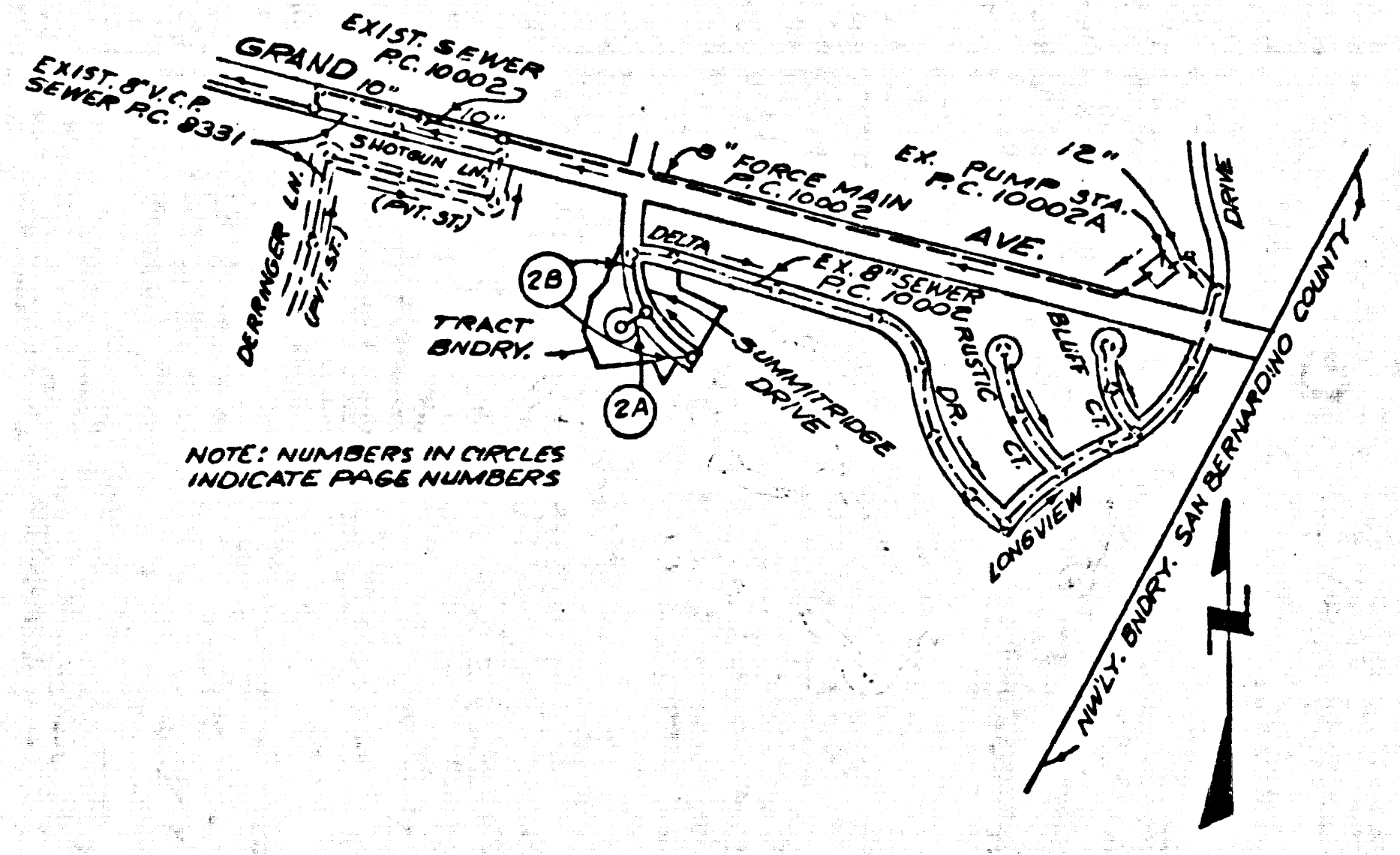
#### CONSTRUCTION NOTES CONT'D.

- FULL COMPLIANCE WITH PART IX OF THE SPECIAL PROVISIONS IS REQUIRED FOR THE INSTALLATION OF A.B.S. COMPOSITE PIPE.
- MANHOLE WATER STOP GASKETS & CLAMPS ARE REQUIRED FOR THE CONNECTION OF A.B.S. COMPOSITE PIPE TO MANHOLE STRUCTURES.
- A.B.S. SOLID WALL PIPE MUST BE USED FOR WYE & HOUSE LATERAL CONNECTIONS TO A.B.S. COMPOSITE MANHOLE SEWER PIPE.
- A.B.S. COMPOSITE PIPE SHALL BE BEDDED IN CONFORMANCE WITH THE TABLE IN SECTION B-3.1 OF PART IX OF THE SPECIAL PROVISIONS.
- PIPE DEFLECTION FITTINGS ARE REQUIRED FOR RADII OF CURVATURE LESS THAN 300 FEET WHEN USING 8" A.B.S.C.P.
- NO CONNECTIONS FOR DISPOSAL OF INDUSTRIAL WASTES IS ALLOWED IF A.B.S. COMPOSITE PIPE IS USED.

NO RECORDATION PRIOR TO ACCEPTANCE & APPROVAL OF TR. NO. 42555-PC. 10003 & 10002 A

ISSUE NO HOUSE CONNECTION PERMITS UNTIL P.C. 10002 & 10002A ARE ACCEPTED

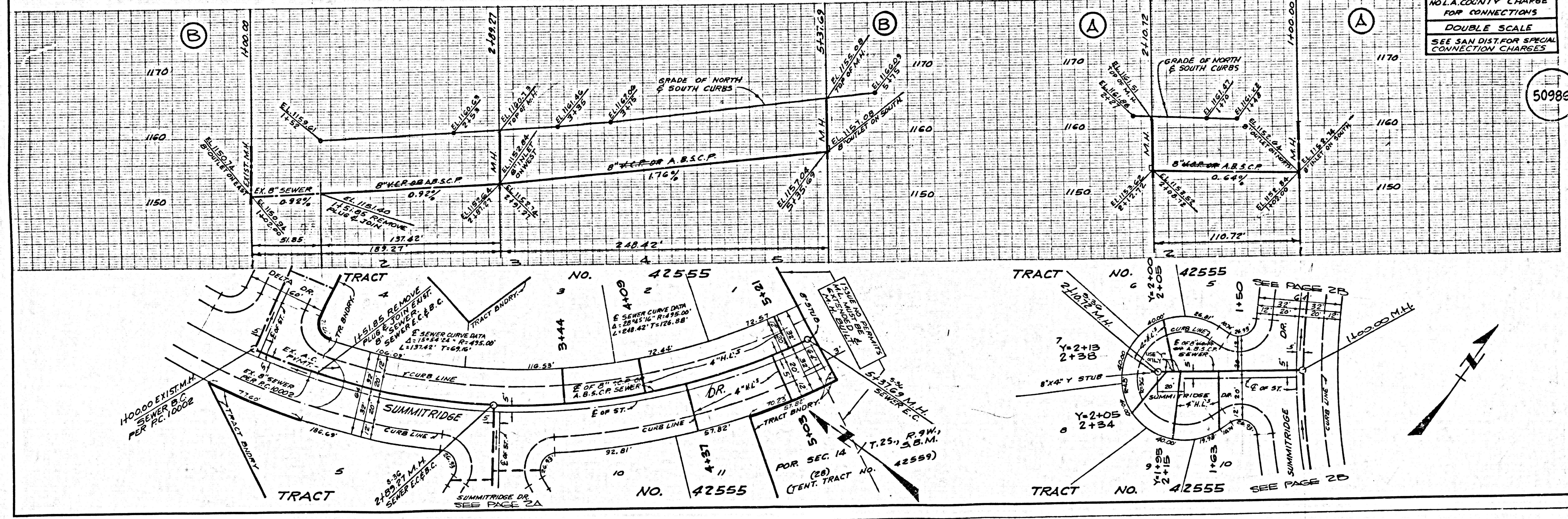
B.M. C.G. 3911 ELEV. 895.556  
1.5 FT. IN F. END C. B. 44 FT 5 1/2 FT. W. C/L INT. GRAND AVE. + DIAMOND BAR BLVD (MKD. B.M. C-12)  
OTTERBEIN QUAD. 1975



INDEX MAP  
TRACT NO. 42555  
P.C. 10003  
SCALE: 1"=600'

NO L.A. COUNTY CHARGE FOR CONNECTIONS  
DOUBLE SCALE  
SEE SAN DIST. FOR SPECIAL CONNECTION CHARGES

50985



BC 1001 29

22555 ON TRACT