

SANITARY SEWERS

TO BE CONSTRUCTED IN

TRACT NO 42559
PRIVATE CONTRACT NO. 10004

W.S. 39-04

3 SHEETS, 5 PAGES

5104

SCALE: VERT. 1" = 8' HORIZ. 1" = 40'

SEPTEMBER, 1981

PREPARED IN THE OFFICES OF

L.V.D. & HILLETUS, INC.

2045 HUNTINGTON DRIVE

SAN MARINO, CALIF. 91764

REG. C. E. NO. 12233

THE FOLLOWING LATEST REVISED STANDARD PLANS ON FILE IN THE OFFICE OF THE COUNTY ENGINEER SHALL APPLY IN THE CONSTRUCTION OF THIS PROJECT:

LEGEND	5-1
MINIMUM PUBLIC SAFETY REQUIREMENTS	5-2
BACK MANHOLES	5-3
STANDARD MANHOLE FIT	5-4
BRANCHES FOR SEWER FIT	5-5
CHASING AND ENCASING	5-6
PIPE ON THE SURFACE	5-7
ALIGNMENT TRENCH WIDTHS	5-8
LOCKING MANHOLE FRAME AND COVER	5-9
NON-REINFORCED PRECAST CONCRETE MANHOLES	5-10
CHIMNEY PIPE & BASE	5-11
BEDDING REQUIREMENTS FOR PLASTIC PIPE	5-12

COUNTY OF LOS ANGELES, CALIFORNIA

STEPHEN J. KOONCE, COUNTY ENGINEER CHARLES W. CARRY, CHIEF ENGINEER

APPROVED [Signature] 2/16/83 APPROVED [Signature] 2/16/83

CHECKED [Signature] 2/17/83

DATE

REG. C. E. NO. 12233

SAN DIMAS MDG. DIST. 10-00

PRIVATE ENGINEERS NOTICE TO CONTRACTORS

The existence and location of any underground utility pipes or structures shown on these plans are obtained by search of the available records. To the best of our knowledge there are no existing utilities except as shown on these plans. The contractor is required to take due precautionary measures to protect the utility lines shown and any other lines not of record or not shown on these plans.

[Signature] Registered Engineer R.C.E. 19233

NO CONNECTION FOR THE DISPOSAL OF INDUSTRIAL WASTES SHALL BE MADE TO SEWERS SHOWN ON THESE DRAWINGS UNTIL A PERMIT FOR INDUSTRIAL WASTEWATER DISCHARGE HAS BEEN ISSUED BY THE SANITATION DISTRICTS FOR SAID CONNECTION.

BEFORE BREAKING INTO OR CONSTRUCTION ON A COUNTY SANITATION DISTRICT SEWER AND PRIOR TO FINAL ACCEPTANCE OF THE PROJECT, SANITATION DISTRICT INSPECTOR SHALL BE NOTIFIED BY PHONE 962-8605 SO THAT REQUIRED INSPECTION CAN BE MADE.

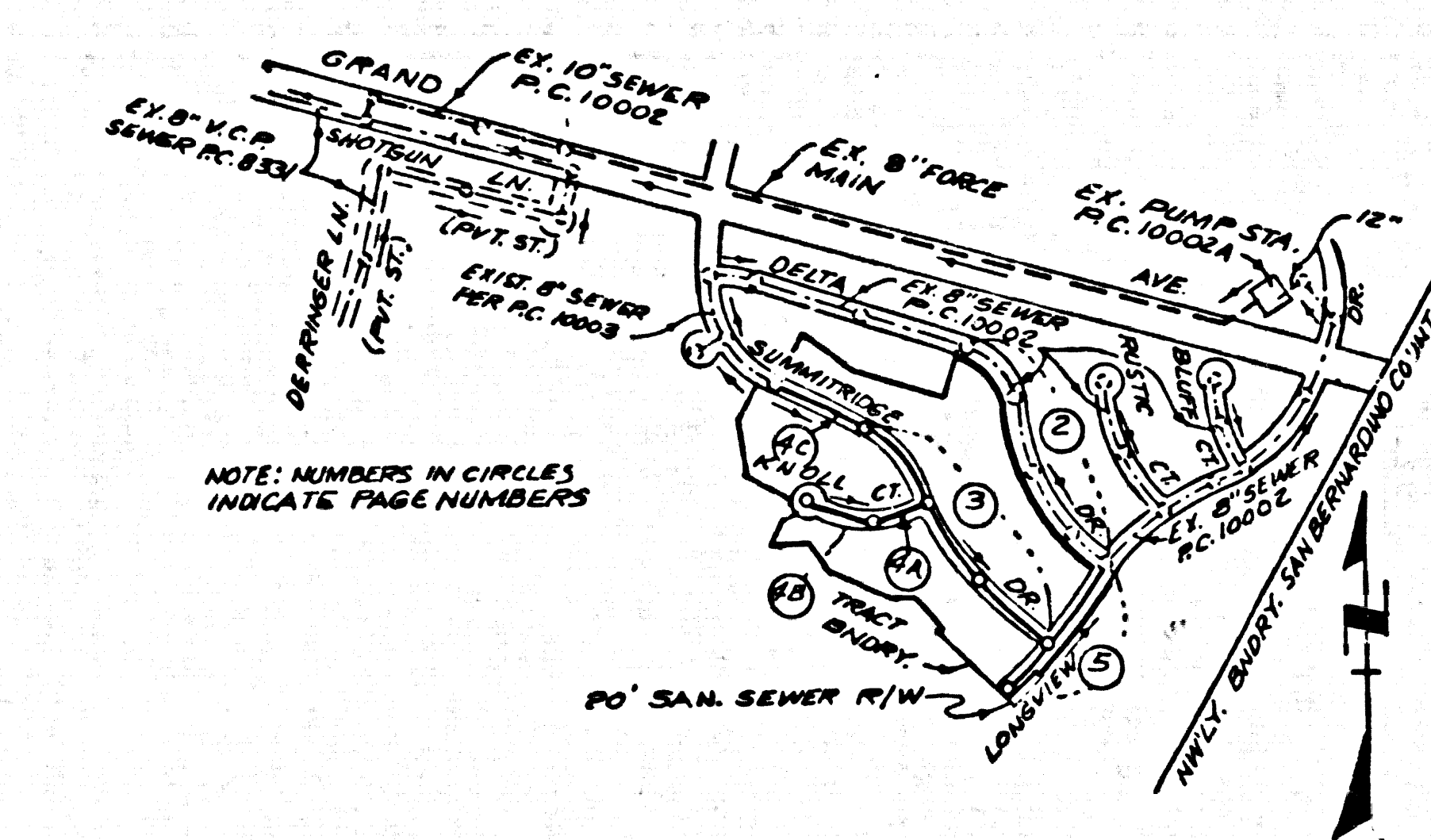
CONSTRUCTION NOTES CONT'D

16. FULL COMPLIANCE WITH PART 12 OF THE SPECIAL PROVISIONS IS REQUIRED FOR THE INSTALLATION OF A.B.S. COMPOSITE PIPE.
17. MANHOLE WATER STOP GASKETS & CLAMPS ARE REQUIRED FOR THE CONNECTION OF A.B.S. COMPOSITE PIPE TO MANHOLE STRUCTURES.
18. A.B.S. SOLID WALL PIPE MUST BE USED FOR WYE & HOUSE LATERAL CONNECTIONS TO A.B.S. COMPOSITE MANHOLE SEWER PIPE.
19. A.B.S. COMPOSITE PIPE SHALL BE BEDDED IN CONFORMANCE WITH THE TABLE IN SECTION 8-1.1 OF PART 12 OF THE SPECIAL PROVISIONS.
20. PIPE DEFLECTION FITTINGS ARE REQUIRED FOR RADIUS OF CURVATURE LESS THAN 300 FEET WHEN USING 8" A.B.S.C.R.
21. NO CONNECTIONS FOR DISPOSAL OF INDUSTRIAL WASTE IS ALLOWED IF A.B.S. COMPOSITE PIPE IS USED.
22. (7E) INDICATES DEPTH OF H.L. AT PROPERTY LINE.

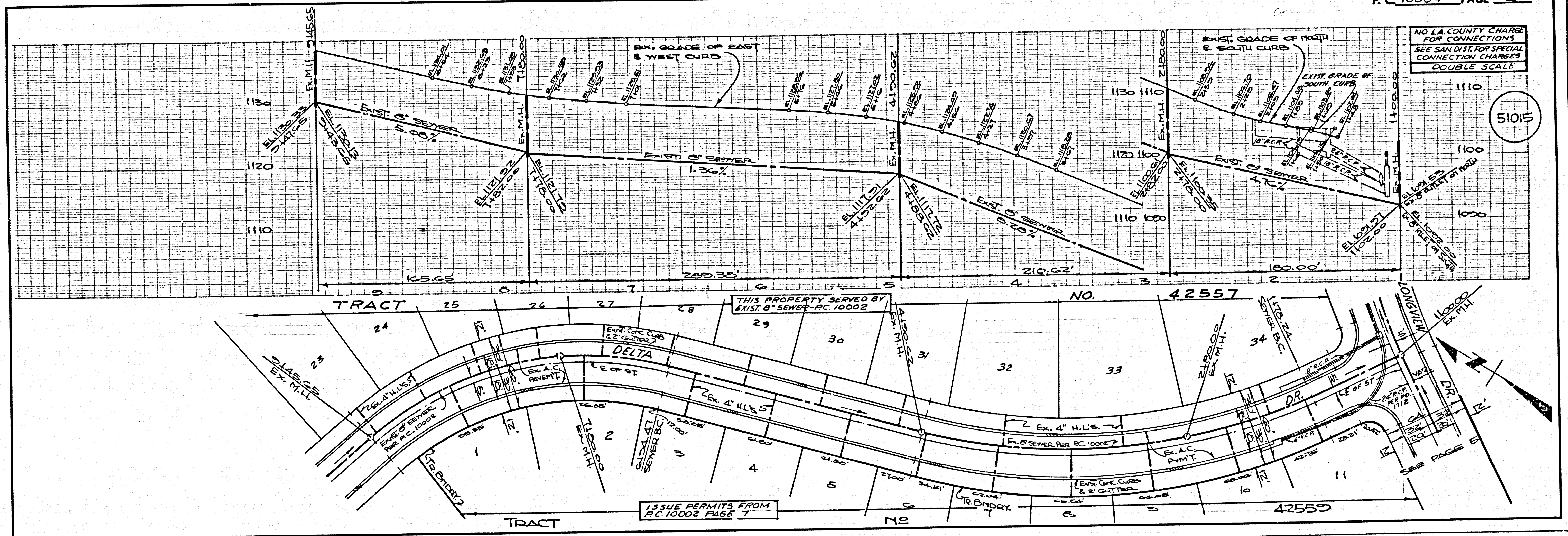
ISSUE NO HOUSE CONNECTION PERMITS UNTIL P.C. 10002 & 10002A ARE ACCEPTED.

B.M. CG BOLL ELEV. 825.550
L & T I.M. 840 C B 44 FT 9 + 50 FT
W. C. L. INT. GRAND AVE. 4" DIAMETER
BAR 6" x 10" (M&D BY C-12)

STERBEIN QUAD. 19 1/2



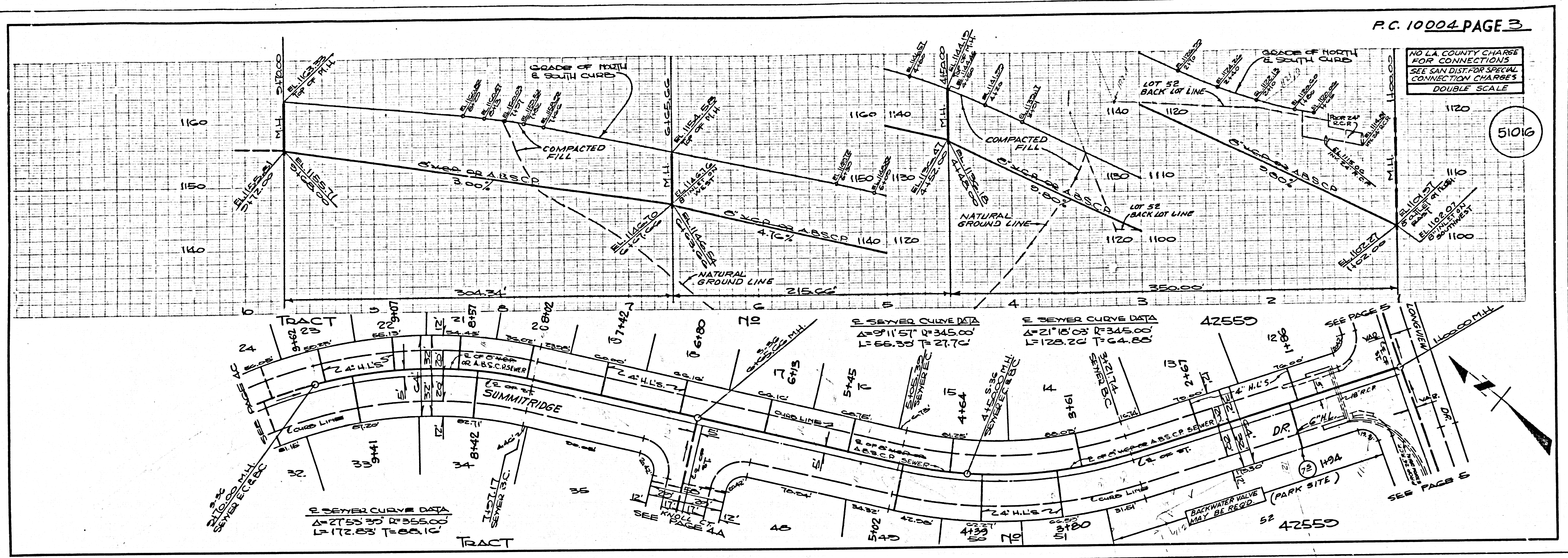
INDEX MAP
TRACT NO 42559
P.C. 10004
SCALE: 1" = 600'



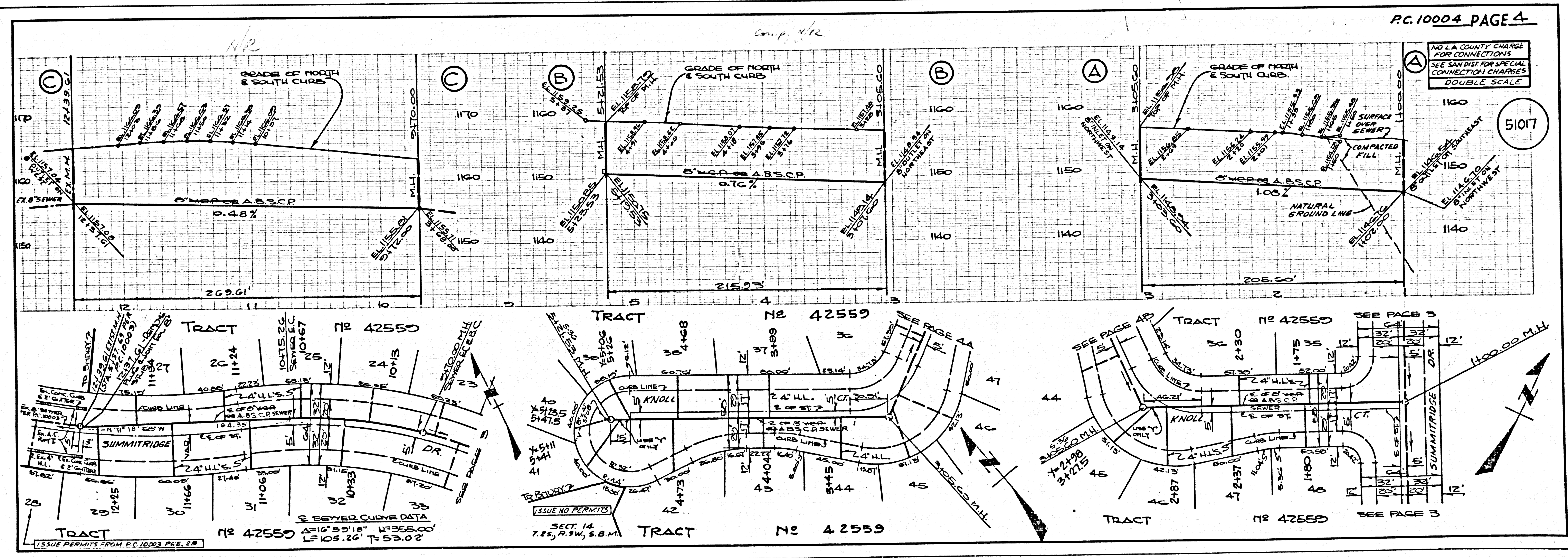
5105

400129

2252 0V TRACT



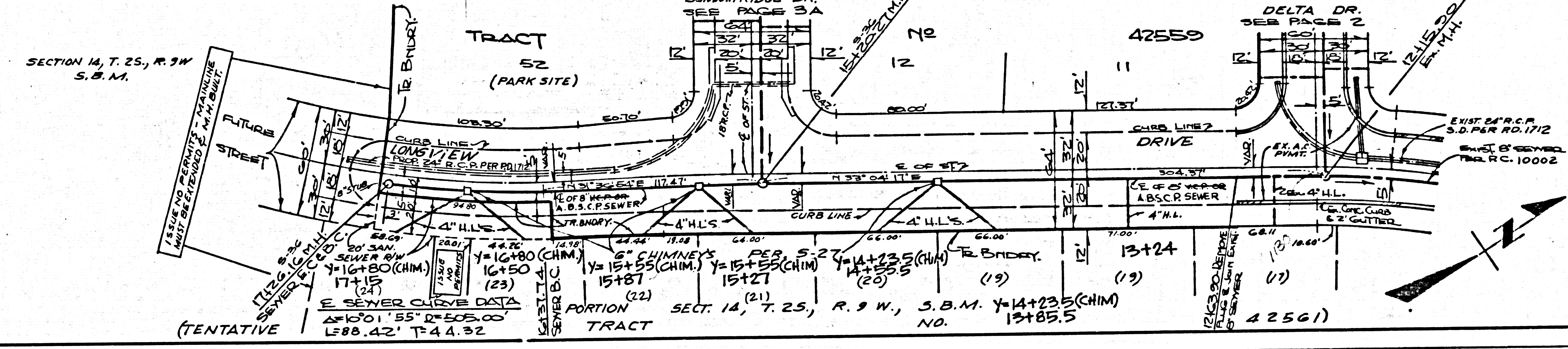
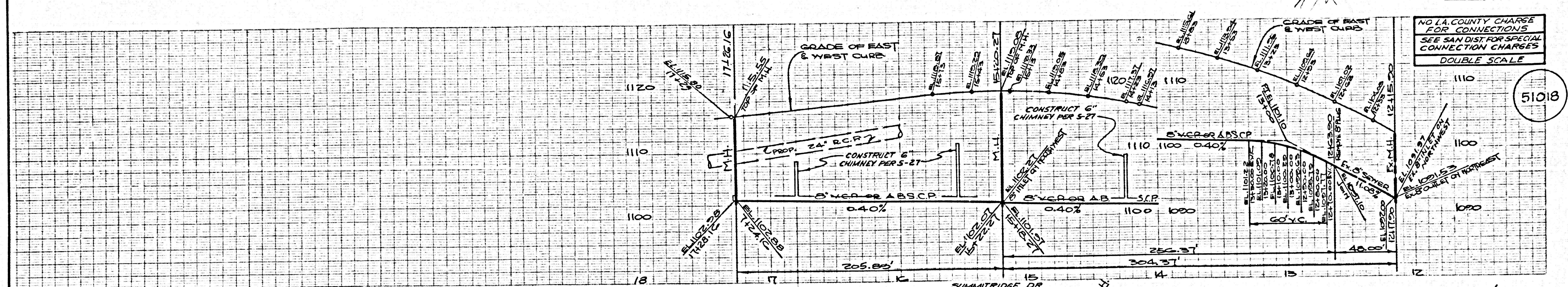
P.C. 10001 29



P.2254 .0M TRACT

NO L.A. COUNTY CHARGE FOR CONNECTIONS
SEE SAN DIST. FOR SPECIAL CONNECTION CHARGES
DOUBLE SCALE

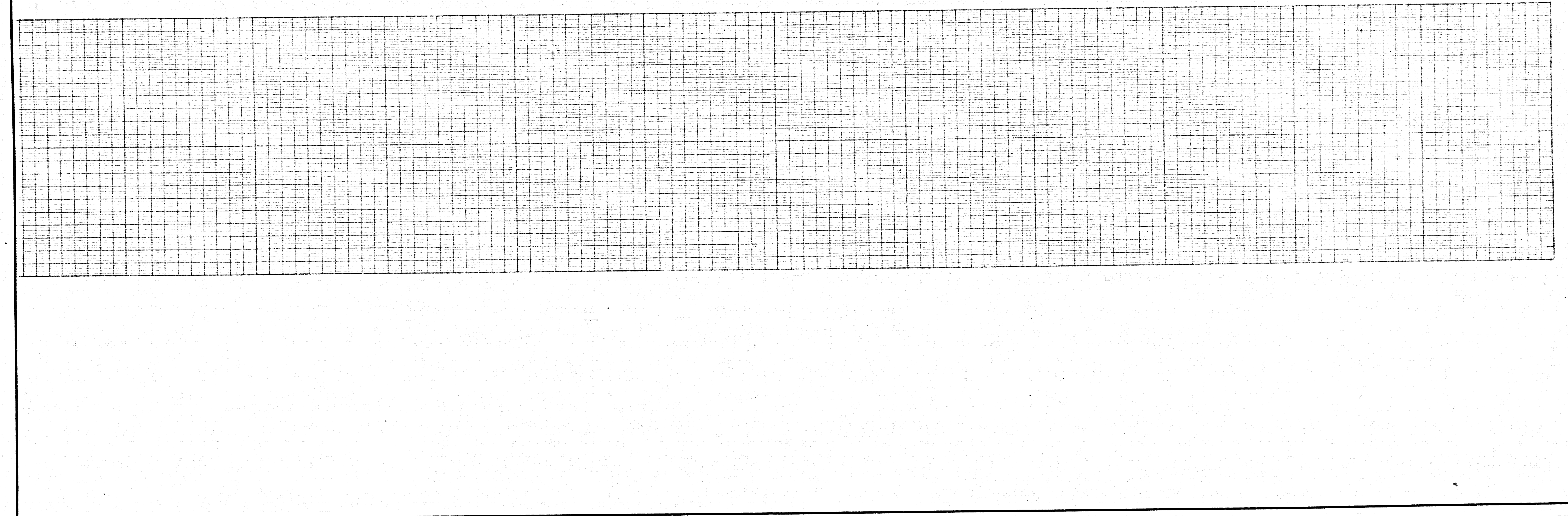
51018



SECTION 14, T. 25, R. 9 W. S.B.M. Y=14+23 (CHIM) NO. 13185.5

TRAJECTORY DATA
 Δ=1001.55° D=505.00'
 L=88.42' T=44.32'

(TENTATIVE)



4001 29

P2222 ON TRACT