

SANITARY SEWERS

TO BE CONSTRUCTED IN

TRACT NO. 42561  
PRIVATE CONTRACT NO. 10005

W.S. 39-04  
2 SHEETS, 4 PAGES  
SCALE: VERT. 1"=4'  
HORIZ. 1"=40'  
SEPTEMBER, 1981  
PREPARED IN THE OFFICES OF  
LIND B. HILLERD, INC.  
2055 HUNTINGTON DRIVE  
SAN MARINO CA 91084  
BY: J.H. [Signature]  
REG. C.E. No. 12233

50965

PRIVATE ENGINEERS NOTICE TO CONTRACTORS

The existence and location of any underground utility pipes or structures shown on these plans are obtained by search of the available records. To the best of our knowledge there are no existing utilities except as shown on these plans. The contractor is required to take due precautionary measures to protect the utility lines shown and any other lines not of record or not shown on these plans.

[Signature]  
Registered Engineer R.C.E. 19233

NO CONNECTION FOR THE DISPOSAL OF INDUSTRIAL WASTES SHALL BE MADE TO SEWERS SHOWN ON THESE DRAWINGS UNTIL A PERMIT FOR INDUSTRIAL WASTEWATER DISCHARGE HAS BEEN ISSUED BY THE SANITATION DISTRICTS FOR SAID CONNECTION.

BEFORE BREAKING INTO OR CONSTRUCTION ON A COUNTY SANITATION DISTRICT SEWER AND PRIOR TO FINAL ACCEPTANCE OF THE PROJECT, SANITATION DISTRICT INSPECTOR SHALL BE NOTIFIED BY PHONE 962-8605, SO THAT REQUIRED INSPECTION CAN BE MADE.

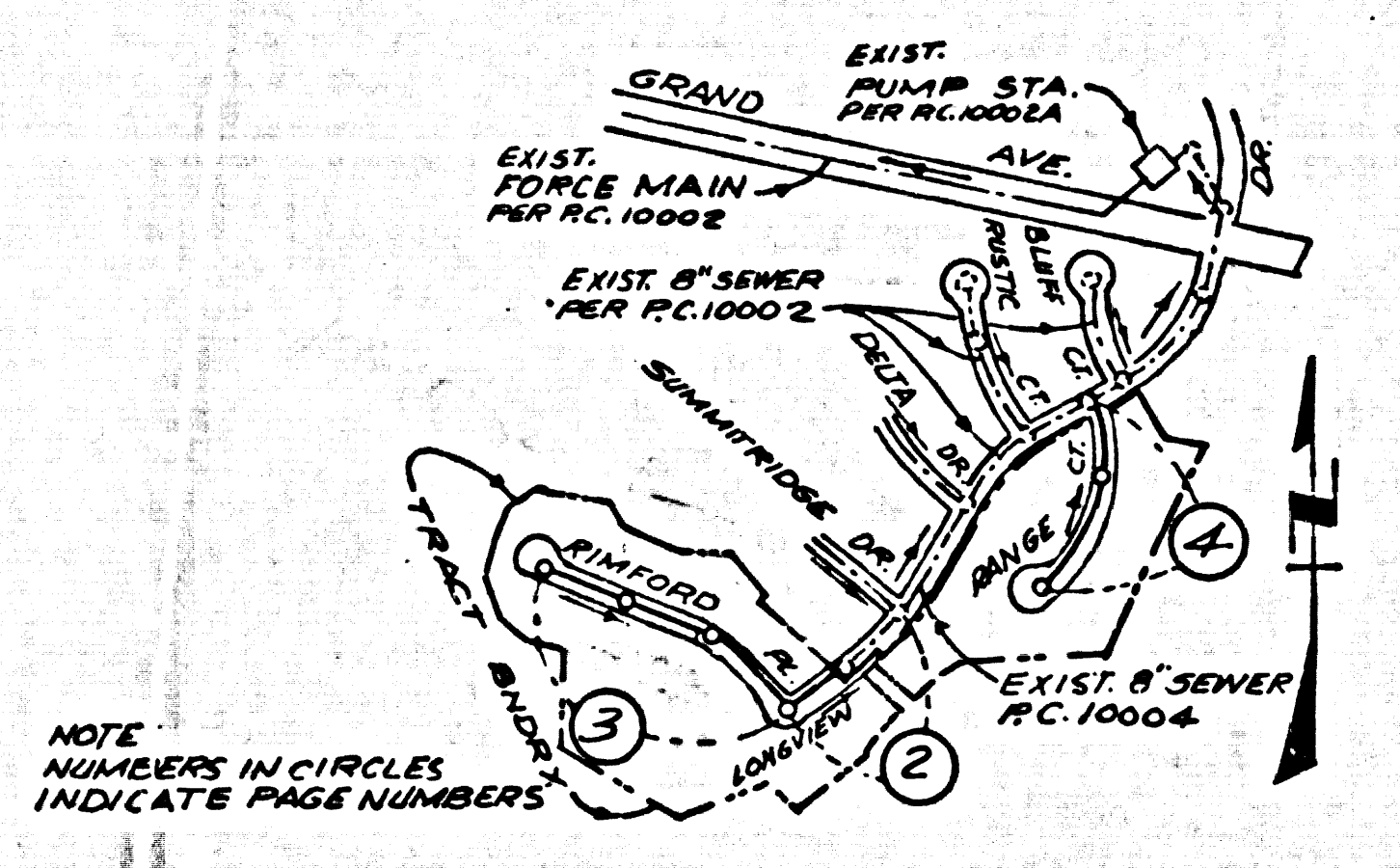
CONSTRUCTION NOTES CONT'D

- 16. FULL COMPLIANCE WITH PART 23 OF THE SPECIAL PROVISIONS IS REQUIRED FOR THE INSTALLATION OF A.B.S. COMPOSITE PIPE.
- 17. MAINLINE WATER STOP GASKETS & CLAMPS ARE REQUIRED FOR THE CONNECTION OF A.B.S. COMPOSITE PIPE TO MANHOLE STRUCTURES.
- 18. A.B.S. SOLID WALL PIPE MUST BE USED FOR NYE & HOUSE LATERAL CONNECTIONS TO A.B.S. COMPOSITE MAINLINE SEWER PIPE.
- 19. A.B.S. COMPOSITE PIPE SHALL BE BEDDED IN CONFORMANCE WITH THE TABLE IN SECTION B-3.1 OF PART 23 OF THE SPECIAL PROVISIONS.
- 20. PIPE DEFLECTION FITTINGS ARE REQUIRED FOR RADII OF CURVATURE LESS THAN 300 FEET WHEN USING "A" A.B.S.C.R.
- 21. NO CONNECTIONS FOR DISPOSAL OF INDUSTRIAL WASTE IS ALLOWED IF A.B.S. COMPOSITE PIPE IS USED.

NOTE: LOTS 16 & 17 SERVED BY R.C. 10002 PG. 2A.  
LOTS 18-24 SERVED BY R.C. 10004 PG. 5.

ISSUE NO HOUSE CONNECTION PERMITS UNTIL R.C.'S 10004, 10002 & 10002A ARE ACCEPTED.

B.M. CG 3911 ELEV. 895.95G  
L&T IN E END C.B. 44 FT S+  
96 FT IN C&L INT GRAND AVE  
+ DIAMOND BAR BLVD  
(MKD BM C-12)  
OTTENBEN QUAD. 1925

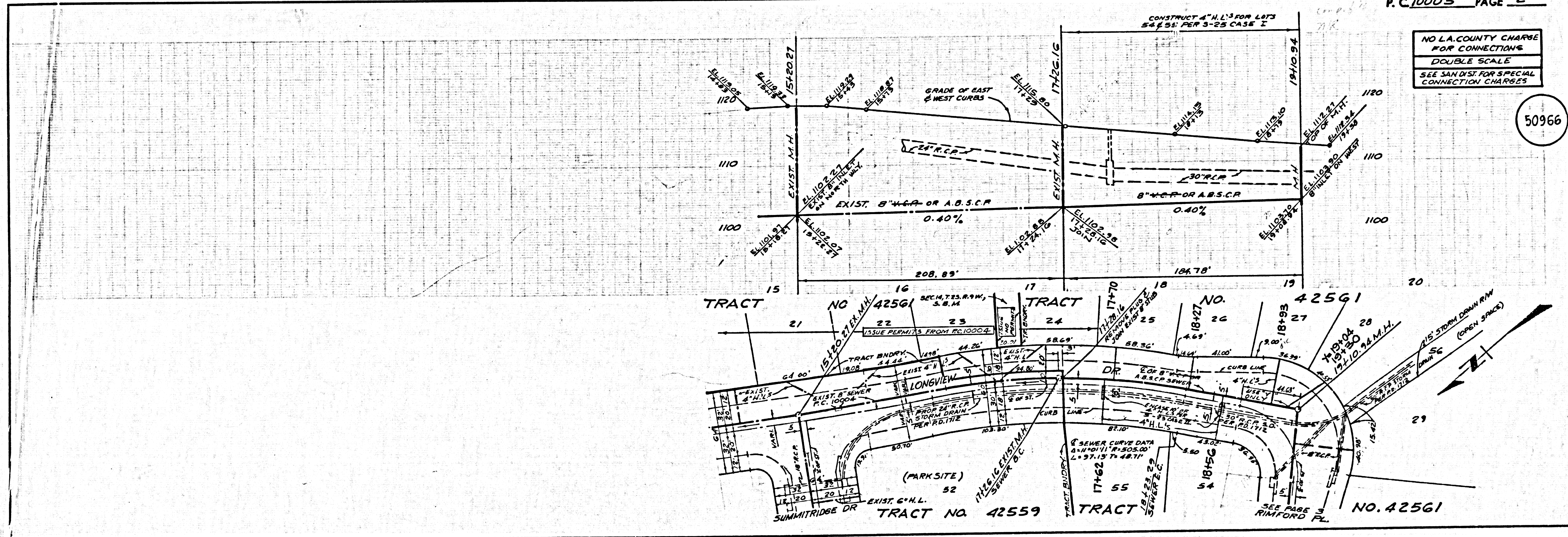


INDEX MAP  
TRACT NO. 42561  
R.C. 10005  
SCALE: 1"=600'

THE FOLLOWING LATEST REVISED STANDARD PLANS ON FILE IN THE OFFICE OF THE COUNTY ENGINEER SHALL APPLY IN THE CONSTRUCTION OF THIS PROJECT.

MINIMUM PUBLIC SAFETY REQUIREMENTS	5-1
MINIMUM PUBLIC SAFETY REQUIREMENTS	5-2
MINIMUM PUBLIC SAFETY REQUIREMENTS	5-3
MINIMUM PUBLIC SAFETY REQUIREMENTS	5-4
MINIMUM PUBLIC SAFETY REQUIREMENTS	5-5
MINIMUM PUBLIC SAFETY REQUIREMENTS	5-6
MINIMUM PUBLIC SAFETY REQUIREMENTS	5-7
MINIMUM PUBLIC SAFETY REQUIREMENTS	5-8
MINIMUM PUBLIC SAFETY REQUIREMENTS	5-9
MINIMUM PUBLIC SAFETY REQUIREMENTS	5-10
MINIMUM PUBLIC SAFETY REQUIREMENTS	5-11
MINIMUM PUBLIC SAFETY REQUIREMENTS	5-12
MINIMUM PUBLIC SAFETY REQUIREMENTS	5-13
MINIMUM PUBLIC SAFETY REQUIREMENTS	5-14
MINIMUM PUBLIC SAFETY REQUIREMENTS	5-15
MINIMUM PUBLIC SAFETY REQUIREMENTS	5-16
MINIMUM PUBLIC SAFETY REQUIREMENTS	5-17
MINIMUM PUBLIC SAFETY REQUIREMENTS	5-18
MINIMUM PUBLIC SAFETY REQUIREMENTS	5-19
MINIMUM PUBLIC SAFETY REQUIREMENTS	5-20
MINIMUM PUBLIC SAFETY REQUIREMENTS	5-21
MINIMUM PUBLIC SAFETY REQUIREMENTS	5-22
MINIMUM PUBLIC SAFETY REQUIREMENTS	5-23
MINIMUM PUBLIC SAFETY REQUIREMENTS	5-24
MINIMUM PUBLIC SAFETY REQUIREMENTS	5-25

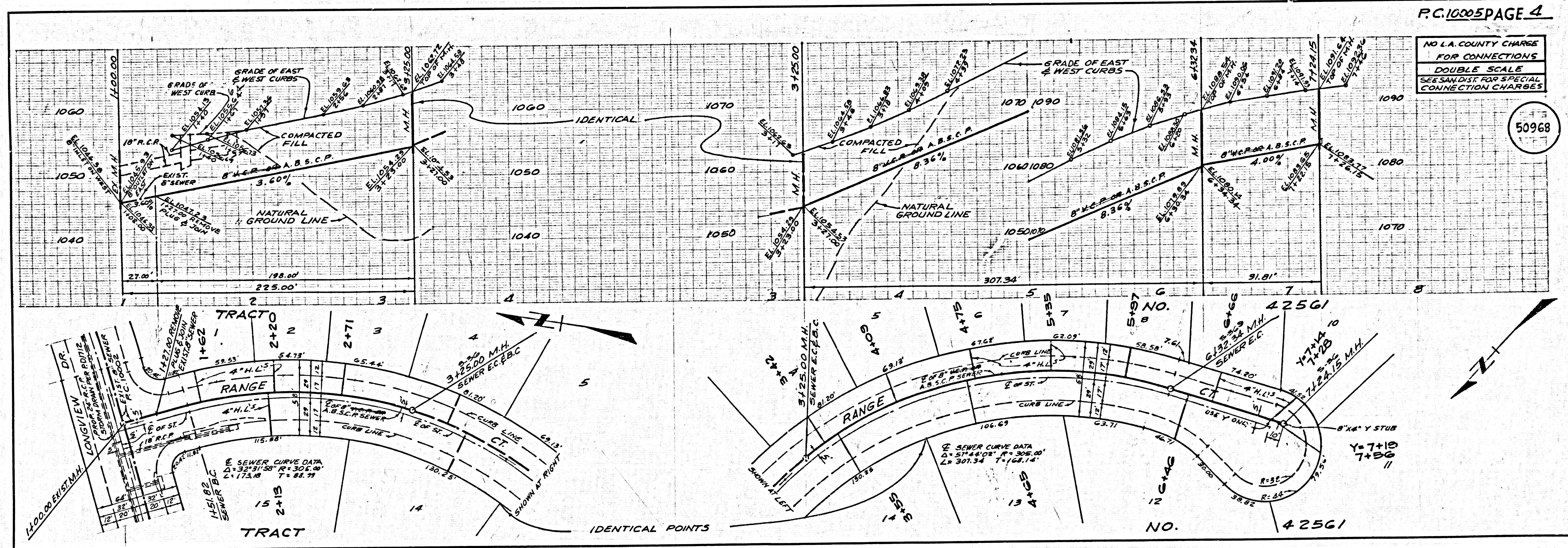
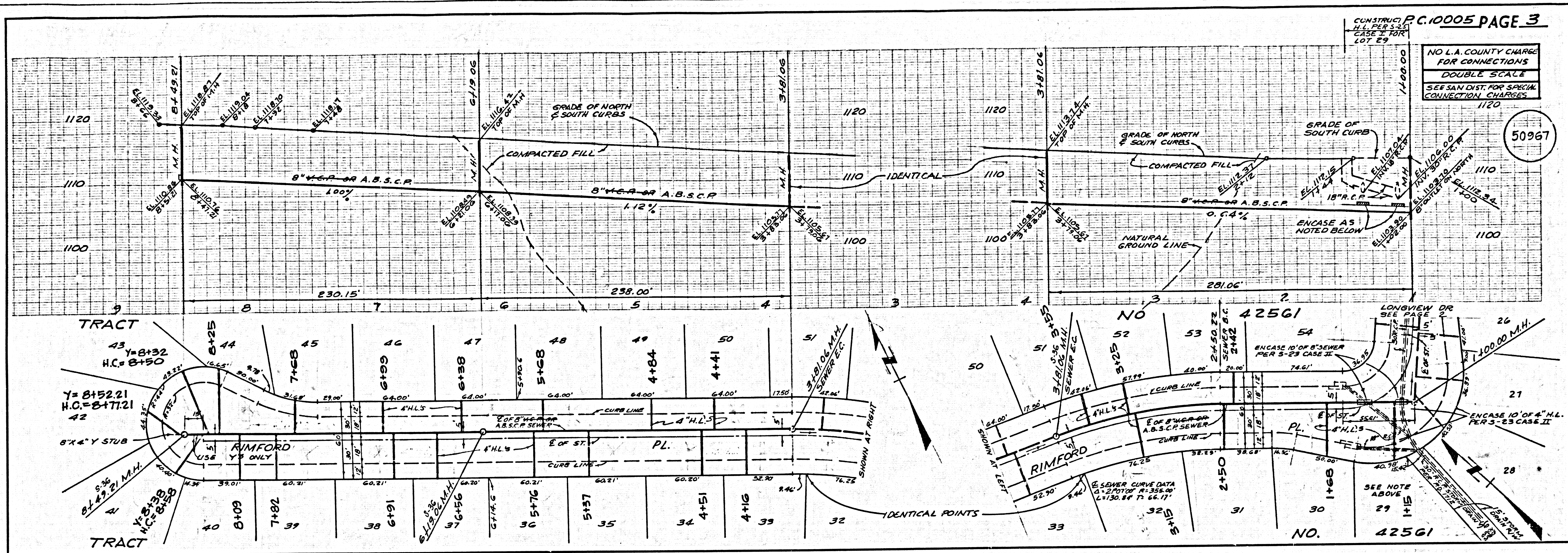
COUNTY OF LOS ANGELES, CALIFORNIA  
STEPHEN J. KOONCE, COUNTY ENGINEER CHARLES W. CASHY, CHIEF ENGINEER  
APPROVED: [Signature] SAN DIMAS PROFESSIONAL ENGINEER STATE  
CHECKED: [Signature] DATE  
REG. C.E. NO. 16883  
SAN DIMAS BLDG. DIST. 10.00



NO L.A. COUNTY CHARGE FOR CONNECTIONS  
DOUBLE SCALE  
SEE SAN DIST FOR SPECIAL CONNECTION CHARGES

50966





2001 29

1254 ON TRACT