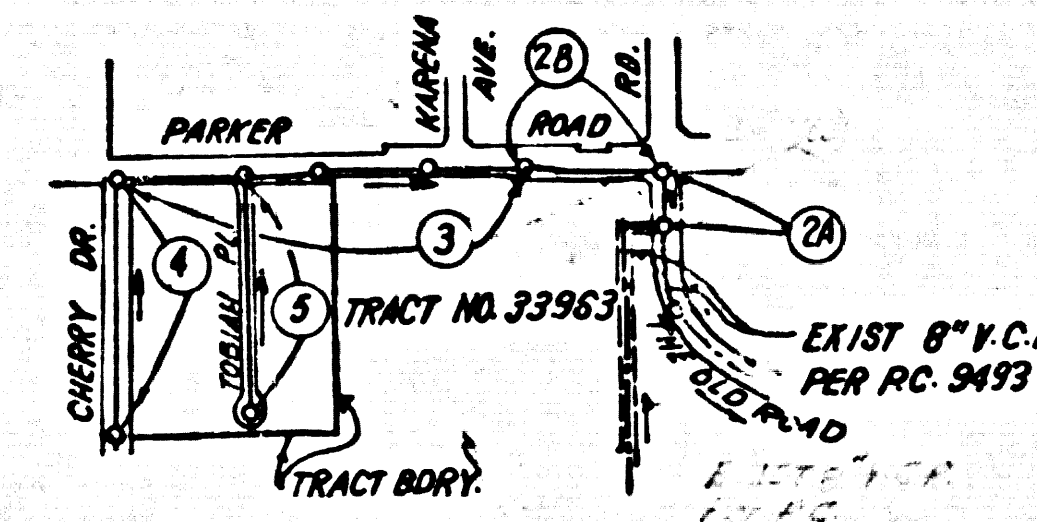


B.M. C.L. 3988 ELEV. 1184.640'  
 U.S.C. & G.S. MON. & N.W. COR. BRIDGE  
 NO. 8 1778 17 FT. N. CAL. CALIFORNIA RD.  
 & 20 FT. E. GOLDEN STATE FRWY  
 ON RAMP MKD (F. 1919-1971)  
 NEWHALL QUAD. 1978



INDEX MAP  
 SCALE: 1"=600'  
 P.C. 10007  
 TRACT NO. 33963

NOTE:  
 NUMBERS IN CIRCLES INDICATE PAGE NUMBER

DOUBLE SCALE:

GENERAL NOTES:  
 1. REVISIONS ARE TO BE MADE IN THE PLAN AND GRADE SHEETS WITHOUT THE APPROVAL OF THE COUNTY ENGINEER.  
 2. NO REPRESENTATIVE OF THE COUNTY ENGINEER WILL SURVEY OR LAY OUT ANY PORTION OF THE WORK.  
 3. CHANGES TO WHICH THIS IMPROVEMENT IS TO BE CONSTRUCTED ARE SHOWN ON PLANS AND PROFILES. GRADE POINTS FOR TOP OF CURBS, CENTER LINE OF STREETS, OR CENTER LINE OF ALLEYS ARE SHOWN BY CIRCLES ON PROFILES. AT ALL POINTS BETWEEN DESIGNATED POINTS THE GRADE SHALL BE ESTABLISHED SO AS TO CONFORM TO A STRAIGHT LINE BETWEEN SAID DESIGNATED POINTS.  
 4. THE PRIVATE ENGINEER SHALL FURNISH THE COUNTY ENGINEER WITH GRADE SHEETS AND STATIONING FOR ALL HOUSE LATERALS AND "T" OR "Y" BRANCHES AND SHALL PROVIDE STAKES FOR THEM AT THESE PROPOSED LOCATIONS WITH STATIONING PLAINLY MARKED. ALL HOUSE LATERALS SHALL BE CONSTRUCTED IN A STRAIGHT ALIGNMENT AT RIGHT ANGLES FROM THE MAIN LINE SEWER EXCEPT AS SHOWN ON THE PLANS. HOUSE LATERALS FROM CHIMNEYS SHALL NOT HAVE AN ANGLE OF LESS THAN 45° WITH THE MAIN LINE SEWER. ANY CHANGE IN ALIGNMENT SHALL BE REQUESTED IN WRITING BY THE PRIVATE ENGINEER.  
 5. THE PRIVATE ENGINEER SHALL FURNISH THE HOUSE LATERAL DEPTH AT THE PROPERTY LINE BELOW THE TOP OF CURB ELEVATION FOR EACH HOUSE LATERAL ON THE GRADE SHEET.  
 6. BEFORE WORK CAN BE STARTED, THE CONTRACTOR MUST OBTAIN A PERMIT TO EXCAVATE IN COUNTY STREETS FROM THE L.A. COUNTY ROAD DEPT., DISTRICT OFFICE NO. 3, AND PAY 2 FEES TO THE COUNTY ENGINEER, 900 S. VEDMONT AVE., L.A., CALIF. 90020, TO COVER THE COST OF CONSTRUCTION INSPECTION AND RECORD PLANS.  
 7. IF WORK IS TO BE DONE IN A STATE HIGHWAY, A PERMIT MUST BE OBTAINED FROM THE STATE OF CALIFORNIA, DIVISION OF HIGHWAYS, 126 SOUTH SPRING STREET, LOS ANGELES, CALIFORNIA.  
 8. APPROVAL OF THIS PLAN BY THE COUNTY OF LOS ANGELES DOES NOT CONSTITUTE A REPRESENTATION AS TO THE ACCURACY OF THE LOCATION OF OR THE EXISTENCE OR NON-EXISTENCE OF ANY UNDERGROUND UTILITY PIPE, OR STRUCTURE WITHIN THE LIMITS OF THIS PROJECT. THIS NOTE APPLIES TO ALL PAGES.  
 9. REFER TO SECTION 7-10.4.1 OF THE STANDARD SPECIFICATIONS REGARDING SAFETY ORDERS.  
 10. PRIOR TO THE ISSUANCE OF THE REQUIRED SEWER CONSTRUCTION PERMIT, THE CONTRACTOR SHALL OBTAIN & FILE WITH THE COUNTY ENGINEER COPIES OF A PERMIT TO EXCAVATE IN COUNTY STREETS FROM THE LOS ANGELES COUNTY RD. DEPT., A PERMIT FOR EXCAVATIONS AND TRENCHES FROM THE STATE OF CALIFORNIA, DIVISION OF INDUSTRIAL SAFETY AND A CERTIFICATE OF WORKERS COMPENSATION INSURANCE, WITH THE DEPT. OF COUNTY ENGINEER, 950 S. VEDMONT, ROOM 405, LOS ANGELES, CALIF. 90020, NAMED AS THE CERTIFICATE HOLDER TO BE NOTIFIED 30 DAYS PRIOR TO CANCELLATION OF POLICY.

CONSTRUCTION NOTES:  
 1. WORK SHALL BE CONSTRUCTED ACCORDING TO THE STANDARD SPECIFICATIONS FOR PUBLIC WORKS CONSTRUCTION 1982 EDITION WITH SUPPLEMENT AND COUNTY ENGINEER SPECIAL PROVISIONS FOR THE CONSTRUCTION OF SANITARY SEWERS DATED SEPTEMBER 1976 AND SHALL BE PROSECUTED ONLY IN THE PRESENCE OF THE COUNTY ENGINEER.  
 2. THE CONTRACTOR SHALL NOTIFY THE ENV. DEV. DIVISION BY TELEPHONE, 738-2158, AT LEAST TWENTY-FOUR HOURS BEFORE STARTING ANY WORK UNDER THIS CONTRACT.  
 3. HOUSE LATERALS TO BE CONSTRUCTED WITH INVERTS AT PROPERTY LINE 6 FEET BELOW CURB GRADE EXCEPT AS NOTED.  
 4. "T" OR "Y" BRANCHES MAY BE USED FOR CONNECTIONS TO MAINLINE SEWERS EXCEPT AS NOTED.  
 5. ALL STRUCTURES SHALL BE EITHER BRICK MANHOLES PER S-3 OR PRECAST CONCRETE MANHOLES PER S-3A, CASE "B" OR "C".  
 6. PROVIDE STAKES ON THE PROPERTY LINE OR PROPERTY LINES PRODUCED AT RIGHT ANGLES TO THE SEWER LINE AT THE CENTER LINE OF EACH MANHOLE.  
 7. MANHOLE TOPS IN UNIMPROVED RIGHTS OF WAY TO BE 6 INCHES ABOVE FINISHED GRADE.  
 8. VITRIFIED CLAY PIPE JOINTS SHALL BE TYPE "B", OR "C" PER STANDARD SPECIFICATIONS SECTION 300-2.  
 9. IF A POWER POLE IS WITHIN THREE FEET OF THE SEWER, THE SEWER SHALL BE ENCASED, PER S-32, CASE B, TWO FEET ON EACH SIDE FROM THE POINT OF INTERFERENCE.  
 10. IF DURING THE COURSE OF CONSTRUCTION IT IS DETERMINED THAT THERE IS LESS THAN FOUR FEET OF COVER OVER THE TOP OF A MAIN LINE OR HOUSE LATERAL V.C.P. SEWER WHICH IS NOT INDICATED ON THE PLANS, THE PIPE SHALL BE ENCASED PER S-32, CASE B, UNLESS OTHERWISE APPROVED BY THE COUNTY ENGINEER.  
 11. ALL JOINTS BETWEEN CAST IRON PIPE AND VITRIFIED CLAY PIPE SHALL BE MADE WITH A RUBBER SLEEVE JOINT, TYPE "C" OR "D", WITH BUSHING IF NECESSARY PER STANDARD SPECIFICATIONS, SECTION 300-2.  
 12. SEWERS TO BE TESTED FOR LEAKAGE PER SECTION 300-1.6 OF THE STANDARD SPECIFICATIONS AND SPECIAL PROVISIONS.  
 13. REPAIRS TO ALL TRENCHES WITHIN PAVED AREAS TO MEET L.A. COUNTY ROAD DEPT. OR CALIFORNIA STATE HIGHWAY REQUIREMENTS IN ACCORDANCE WITH PERMITS.  
 14. FULL COMPLIANCE WITH SECTION 300-1.8 OF THE SPECIAL PROVISIONS WILL BE REQUIRED FOR BACKFILL IN STREETS. CERTIFICATION OF ADEQUATE COMPACTION AND SAND EQUIVALENTS BY A QUALIFIED, REGISTERED TESTING LABORATORY SHALL BE PROVIDED BY THE PERMITTEE PRIOR TO THE ISSUANCE OF A CERTIFICATE OF PARTIAL ACCEPTANCE.

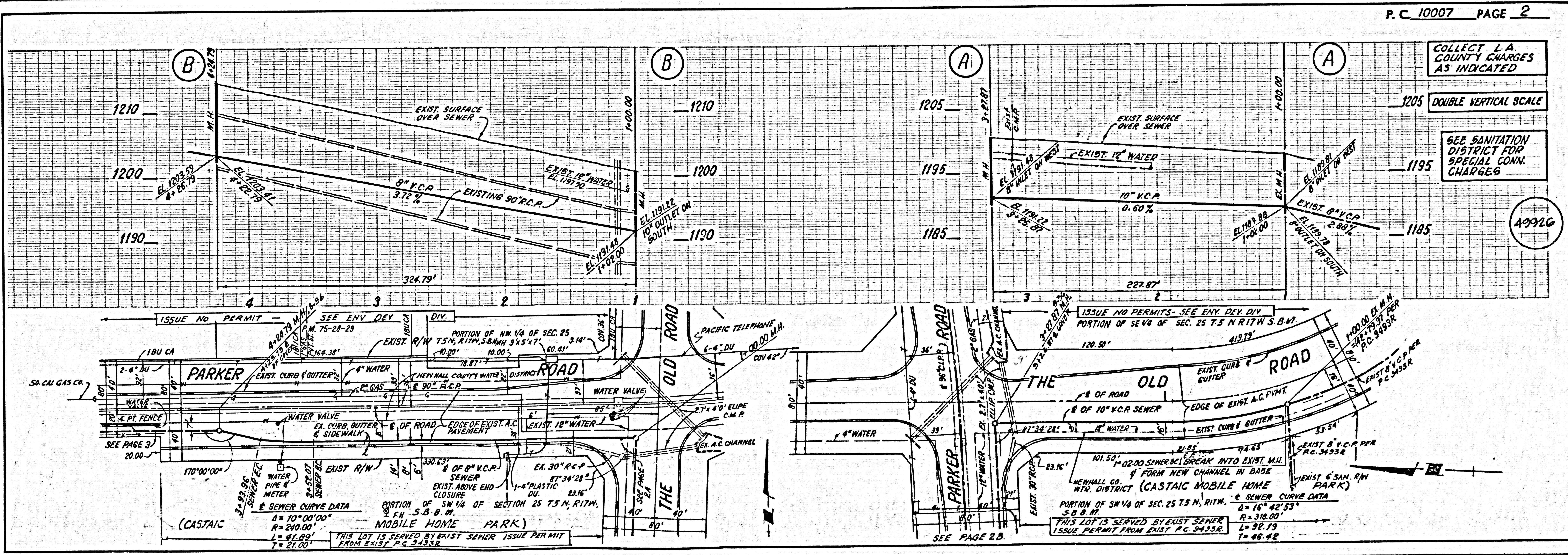
NO CONNECTION FOR THE DISPOSAL OF INDUSTRIAL WASTES SHALL BE MADE TO SEWERS SHOWN ON THESE DRAWINGS UNTIL A PERMIT FOR INDUSTRIAL WASTEWATER DISCHARGE HAS BEEN ISSUED BY THE SANITATION DISTRICTS FOR SAID CONNECTION.  
 BEFORE BREAKING INTO OR CONSTRUCTION ON A COUNTY SANITATION DISTRICT SEWER PRIOR TO FINAL ACCEPTANCE OF THE PROJECT, SANITATION DISTRICT INSPECTOR SHALL BE NOTIFIED BY PHONE - 942-8403, 938-4342 SO THAT REQUIRED INSPECTION CAN BE MADE.

PROFILE, ALIGNMENT AND GRADE OF  
**SANITARY SEWERS** PAGE 1  
 TO BE CONSTRUCTED IN  
 TRACT NO. 33963  
 PRIVATE CONTRACT NO. 10007  
 W.S. 77-A-5  
 3 SHEETS; 5 PAGES  
 49925  
 SCALE: HORIZ. 1"=40' VERT. 1"=4'  
 NOVEMBER, 1981  
 PREPARED IN THE OFFICES OF  
 SIKAND ENGINEERING ASSOCIATES  
 1230 BURBANK BLVD., VAN NUYS  
 CALIFORNIA 91411 (213) 87-8550  
 BY: *Narab C. Lem...*  
 REG. C.E. No. 21873

THE FOLLOWING LATEST REVISED STANDARD PLANS ON FILE IN THE OFFICE OF THE COUNTY ENGINEER SHALL APPLY IN THE CONSTRUCTION OF THIS PROJECT:

LEGEND	S-1
MINIMUM PUBLIC SAFETY REQUIREMENTS	S-2
BRICK MANHOLE	S-3
STAIN AND MANHOLE STEP	S-4
HOODING FOR SEWER PIPE	S-5
CRADLING AND BRACEMENT	S-6
WYE OR TEE SUPPORT	S-7
ALLOWABLE TRENCH WIDTHS	S-8
ENCASING MANHOLE FRAME AND COVER	S-9
NON-REINFORCED PRECAST CONCRETE MANHOLES	S-10
DESIGN REQUIREMENTS FOR SANITARY SEWERS IN THE VICINITY OF PRESSURE WATER MAINS	S-11

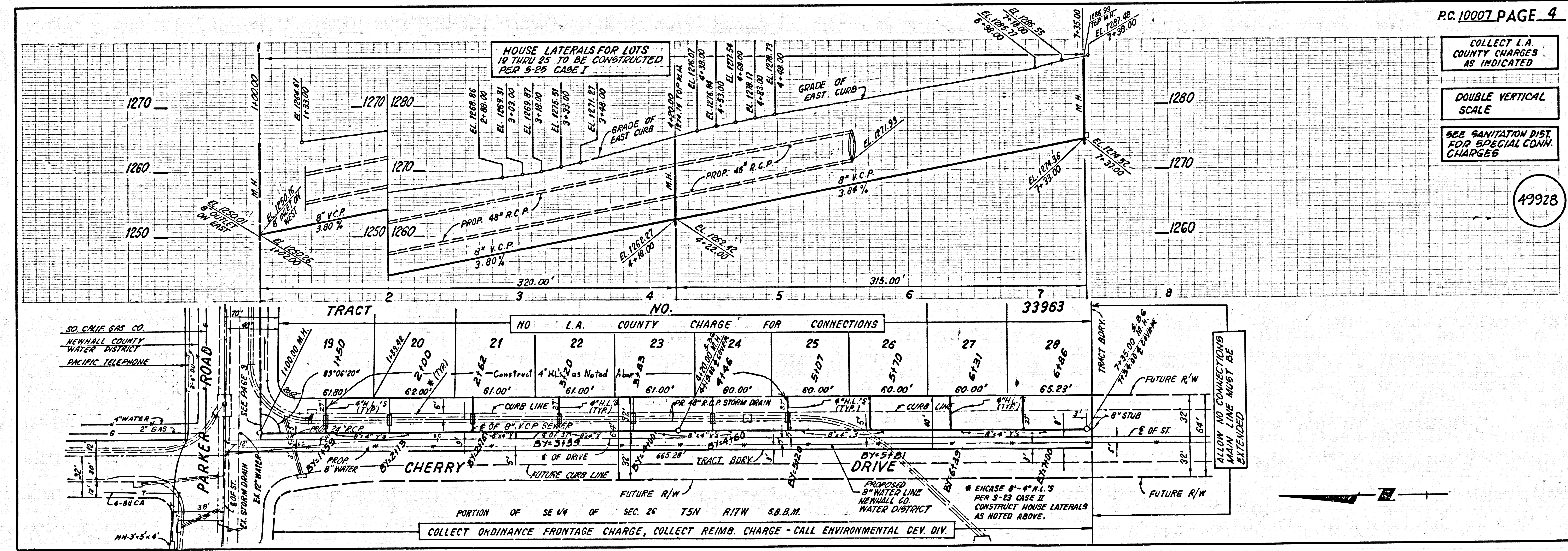
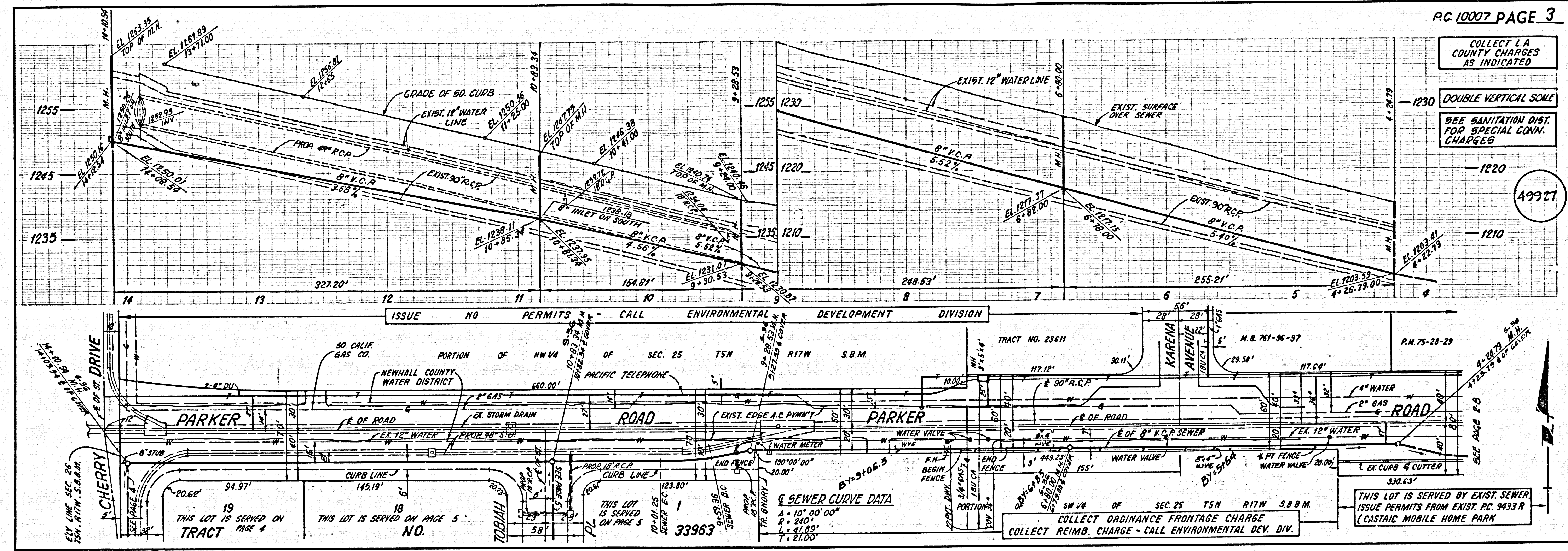
COUNTY OF LOS ANGELES, CALIFORNIA  
 STEPHEN J. ROOPE, COUNTY ENGINEER WALTER E. BARRISON, CHIEF ENGINEER  
 CO. SAN. DIST. NO. 32  
 APPROVED: *K. R. Murphy 7-27-82* APPROVED: *Dean M. Fuller 7/30/82*  
 DATE: DATE: *for OFFICE ENGINEER*  
 CHECKED: *Halp D. ... 7/24/82*  
 REG. C.E. NO. 16873  
 SANTA CLARITA VALLEY BLDG. DIST. 82



P.C. 10007 PAGE 2

COLLECT L.A. COUNTY CHARGES AS INDICATED  
 DOUBLE VERTICAL SCALE  
 SEE SANITATION DISTRICT FOR SPECIAL CONN. CHARGES  
 49926

1 BC 10001 33963 ON TRACT



BC 100129 63833 ON TRACT