

B.M. C.G. 4235 ELEV. 605.513
 RDBM TAG IN No. CD BALAN ROAD S' W/4
 S/E 47' W/4 & 20' N/4 & INT. PEPPERDALE
 DRIVE.
 OTTERBEIN QUAD. 1975 (adj.)

PRIVATE ENGINEER NOTICE TO CONTRACTORS:

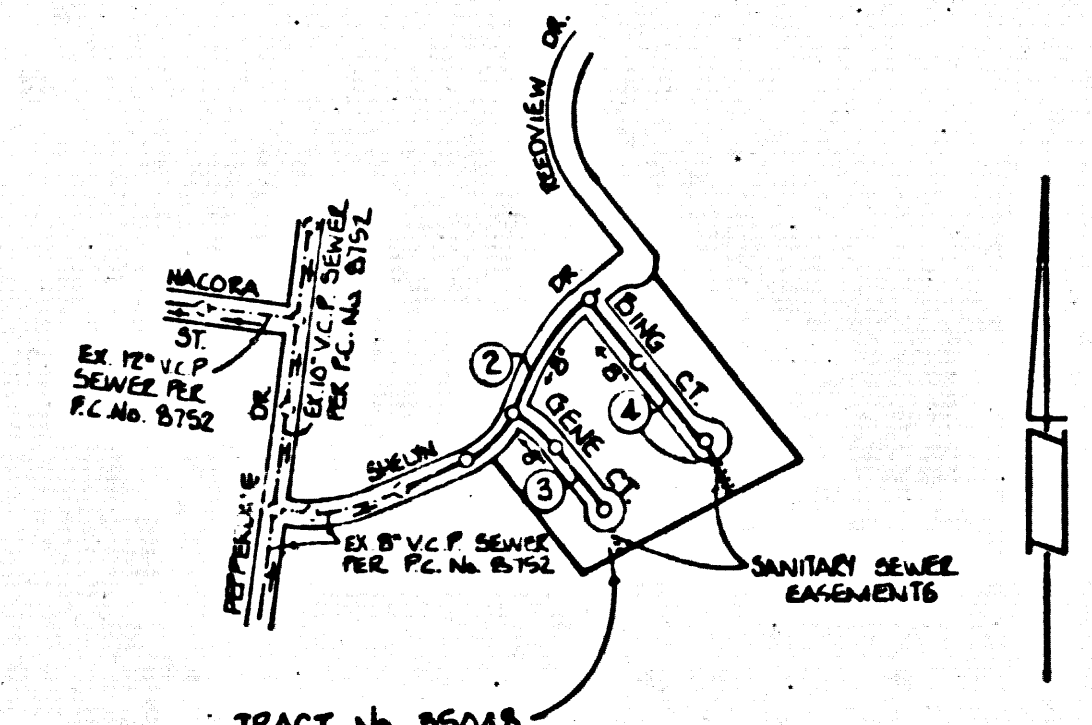
THE EXISTENCE AND APPROXIMATE LOCATION OF UNDERGROUND UTILITIES OR STRUCTURES SHOWN ON THESE PLANS WERE DETERMINED BY A SEARCH OF AVAILABLE PUBLIC RECORDS. TO THE BEST OF OUR KNOWLEDGE THERE ARE NO EXISTING UNDERGROUND UTILITIES OR STRUCTURES EXCEPT AS SHOWN ON THESE PLANS.

THE CONTRACTOR IS REQUIRED TO TAKE DUE PRECAUTIONARY MEASURES TO PROTECT THE EXISTING UNDERGROUND UTILITIES OR STRUCTURES SHOWN AND ANY OTHER EXISTING UNDERGROUND UTILITIES OR STRUCTURES NOT OF RECORD OR NOT SHOWN ON THESE PLANS.

CONTRACTOR AGREES THAT HE SHALL ASSUME SOLE AND COMPLETE RESPONSIBILITY FOR JOB SITE CONDITIONS DURING THE COURSE OF CONSTRUCTION OF THIS PROJECT, INCLUDING SAFETY OF ALL PERSONS AND PROPERTY; THAT THIS REQUIREMENT SHALL APPLY CONTINUOUSLY AND NOT BE LIMITED TO NORMAL WORKING HOURS, AND THAT THE CONTRACTOR SHALL DEFEND INDEMNIFY AND HOLD THE OWNER AND ENGINEER HARMLESS FROM ANY AND ALL LIABILITY, REAL OR ALLEGED, IN CONNECTION WITH THE PERFORMANCE OF WORK ON THIS PROJECT, EXCEPT FOR LIABILITY ARISING FROM THE SOLE NEGLIGENCE OF THE OWNER OR ENGINEER.

Robert P. Galle
 Date

REVISION NO. 1 DATE 12/9/91
 REVISED LOT FRONTAGE
 DIMENSIONS ON LOTS 1, 2, 3, 10, 11 & 19
 APPROVED *Ralph David Lewat* 12/9/91
 OFFICE OF COUNTY ENGINEER



INDEX MAP
 TRACT No. 35048
 T.C. No. 10012
 SCALE: 1"=600'

NOTE: MANHOLE IN CIRCLE INDICATED PAGE NUMBER

NO CONNECTION FOR THE DISPOSAL OF INDUSTRIAL WASTES SHALL BE MADE TO SEWERS SHOWN ON THESE PLANS UNLESS A PERMIT FOR INDUSTRIAL WASTE SEWER CONNECTION HAS BEEN ISSUED BY THE SANITATION DISTRICTS FOLLOWING CONNECTION.

BEFORE BEGINNING WORK OR CONSTRUCTION ON A CHIMNEY OR MANHOLE, THE CONTRACTOR SHALL OBTAIN THE NECESSARY PERMITS OF THE SANITATION DISTRICTS. THESE PERMITS SHALL BE OBTAINED BEFORE ANY WORK IS DONE ON THE CHIMNEY OR MANHOLE.

CONSTRUCTION NOTES CONTINUED
 16. FULL COMPLIANCE WITH PART 302 OF THE SPECIAL PROVISIONS IS REQUIRED FOR THE INSTALLATION OF A 6" DIA. CLAYPIPE PIPE.
 17. MANHOLE WALLS, TOP COCKETS AND CLIMBERS ARE REQUIRED FOR THE CONNECTION OF ALL CLAYPIPE PIPE TO MANHOLE STRUCTURES.
 18. A 3" DIA. WALL PIPE MAY BE USED FOR WYE AND HOUSE LATERAL CONNECTIONS TO A 6" DIA. CLAYPIPE MANHOLE SERVICE PIPE.
 19. A 3" DIA. CLAYPIPE PIPE SHALL BE SHIPPED IN CONFORMANCE WITH THE TABLE IN SECTION 306-1.1 OF THE SPECIAL PROVISIONS.
 20. PIPE DEFLECTION FITTINGS REQUIRED FOR RADIUS OF CURVATURE OF LESS THAN 500 FT.

GENERAL NOTES: DOUBLE SCALE

- ELEVATIONS ARE IN FEET ABOVE U.S.C. & G.S. SEA LEVEL DATUM OF 1929
- NO REVISIONS SHALL BE MADE IN THESE PLANS WITHOUT THE APPROVAL OF THE COUNTY ENGINEER.
- NO REPRESENTATIVE OF THE COUNTY ENGINEER WILL SURVEY OR LAY OUT ANY PORTION OF THE WORK.
- GRADES TO WHICH THIS IMPROVEMENT IS TO BE CONSTRUCTED ARE SHOWN ON PLANS AND PROFILES. GRADE POINTS FOR TOP OF CURBS, CENTER LINE OF STREETS, OR CENTER LINE OF ALLEYS ARE SHOWN BY CIRCLES ON PROFILES. AT ALL POINTS BETWEEN SAID DESIGNATED POINTS THE GRADE SHALL BE ESTABLISHED SO AS TO CONFORM TO A STRAIGHT LINE DRAWN BETWEEN SAID DESIGNATED POINTS.
- THE PRIVATE ENGINEER SHALL FURNISH THE COUNTY ENGINEER WITH GRADE SHEETS AND STATIONING FOR ALL HOUSE LATERALS AND "T" OR "Y" BRANCHES AND SHALL PROVIDE STAKES FOR THEM AT THEIR PROPER LOCATIONS WITH STATIONING PLAINLY MARKED. ALL HOUSE LATERALS SHALL BE CONSTRUCTED IN A STRAIGHT ALIGNMENT AT RIGHT ANGLES FROM THE MAIN LINE SEWER EXCEPT AS SHOWN ON THE PLANS. HOUSE LATERALS FROM CHIMNEYS SHALL NOT HAVE AN ANGLE OF LESS THAN 45° WITH THE MAIN LINE SEWER. ANY CHANGE IN ALIGNMENT SHALL BE REQUESTED IN WRITING BY THE PRIVATE ENGINEER.
- THE PRIVATE ENGINEER SHALL FURNISH THE HOUSE LATERAL DEPTH AT THE PROPERTY LINE BELOW THE TOP OF CURB ELEVATION FOR EACH HOUSE LATERAL ON THE GRADE SHEET.
- BEFORE WORK CAN BE STARTED, THE CONTRACTOR MUST OBTAIN A PERMIT TO EXCAVATE IN COUNTY STREETS FROM THE L.A. COUNTY ROAD DEPT., DISTRICT OFFICE NO. 1 AND P.L. & E. TO THE COUNTY ENGINEER, 30 E. SOUTH, P.O. BOX 390, SAN DIEGO, CALIF. REGIONAL OFFICE, TO COVER THE COST OF CONSTRUCTION INSPECTION AND RECORD PLANS.
- IF WORK IS TO BE DONE IN A STATE HIGHWAY, A PERMIT MUST BE OBTAINED FROM THE STATE OF CALIFORNIA, DIVISION OF HIGHWAYS, 100 SOUTH SPRING STREET, LOS ANGELES, CALIFORNIA.
- APPROVAL OF THIS PLAN BY THE COUNTY OF LOS ANGELES DOES NOT CONSTITUTE A REPRESENTATION AS TO THE ACCURACY OF THE LOCATION OF OR THE EXISTENCE OR NON-EXISTENCE OF ANY UNDERGROUND UTILITY PIPE, OR STRUCTURE WITHIN THE LIMITS OF THIS PROJECT. THIS NOTE APPLIES TO ALL PAGES.
- REFER TO SECTION 306-1.1 OF THE STANDARD SPECIFICATIONS, REGARDING SAFETY ORDERS.
- PRIOR TO THE ISSUANCE OF THE REQUIRED SEWER CONNECTION PERMIT BY THE COUNTY ENGINEER THE CONTRACTOR SHALL OBTAIN A PERMIT TO EXCAVATE FROM THE STATE OF CALIFORNIA, DEPARTMENT OF INDUSTRIAL RELATIONS, DIVISION OF INDUSTRIAL SAFETY, AND SHALL FILE A CERTIFICATE OF WORKERS COMPENSATION INSURANCE WITH THE COUNTY ENGINEER.

TO BE CONSTRUCTED IN
 TRACT No. 35048
 PRIVATE CONTRACT NO. 10012

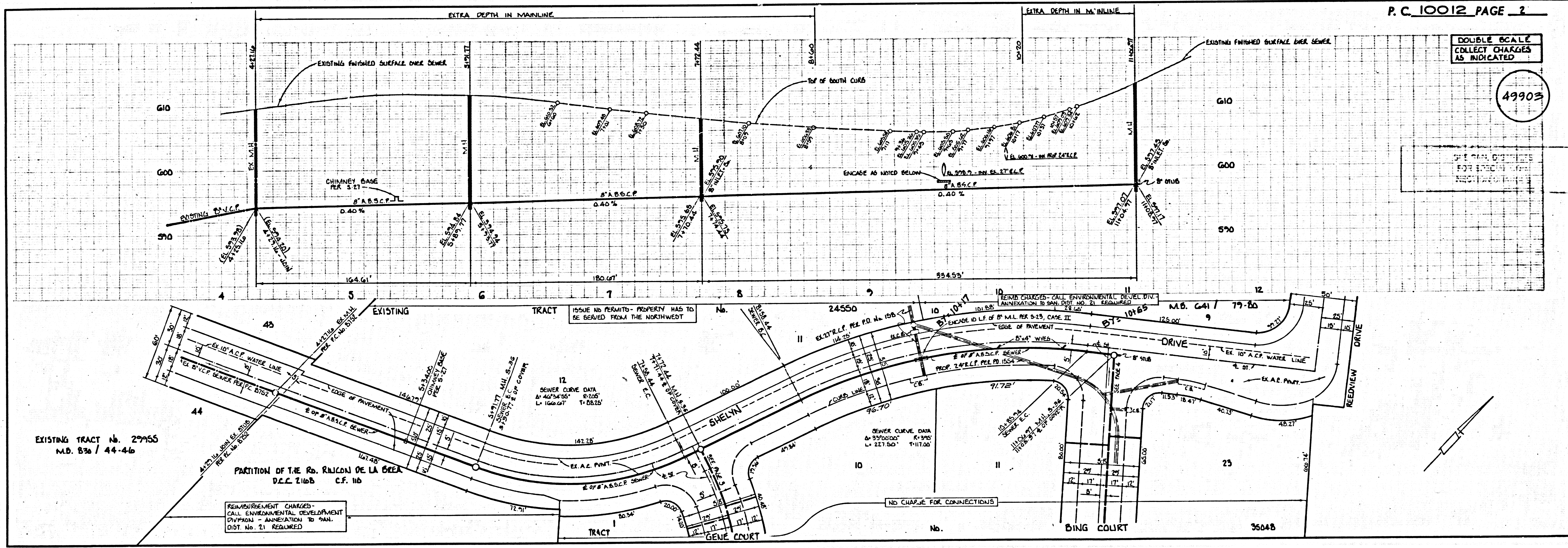
W.S. 39-A,4
 2 SHEETS, 4 PAGES
 SCALE: VERT. 1"=8'
 HORIZ. 1"=40'
 OCTOBER 1991
 PREPARED IN THE OFFICES OF
PFEILER & ASSOCIATES
 ENGINEERS
 1839 W. COMMUNWELLTH AVE.
 FULLERTON, CALIFORNIA 92633
 BY: *Robert P. Galle*
 REG. G.E. No. 12507

49902

THE FOLLOWING LATEST REVISED STANDARD PLANS ON FILE IN THE OFFICE OF THE COUNTY ENGINEER SHALL APPLY IN THE CONSTRUCTION OF THIS PROJECT.

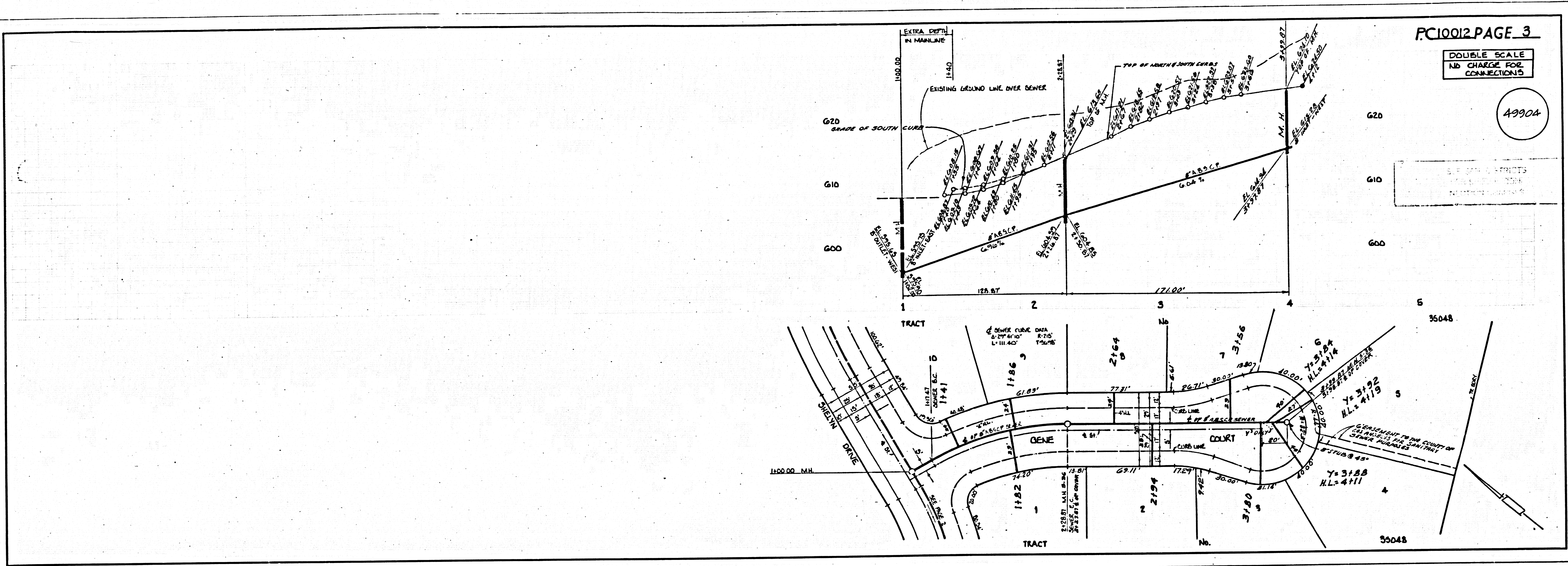
LEGEND	8-1
MINIMUM PUBLIC SAFETY REQUIREMENTS	8-2
BRICK MANHOLE	8-3
STANDARD MANHOLE STEP	8-7
BEDDING FOR SEWER PIPE	8-8
CRADLING AND ENCASMENT	8-9
W/P OR THE SUPPORT	8-10
ALLOWABLE TRENCH WIDTHS	8-11
LOCKING MANHOLE FRAME AND COVER	8-12
NON-REINFORCED PERCAST CONCRETE MANHOLE	8-13
BEDDING REQUIREMENTS FOR PLASTIC PIPE	8-14
CHIMNEY BASE	8-15

COUNTY OF LOS ANGELES, CALIFORNIA
 STEPHEN J. KADANCE, COUNTY ENGINEER
 W.E. GARRISON, CHIEF ENGINEER
 APPROVED *Sam Miller* 11/9/91
 SAN DIEGO REGIONAL ENGINEER (DATE)
 APPROVED *Ralph David Lewat* 11/13/91
 FOR OFFICE ENGINEER (DATE)
 REG. C.E. No. 16883
 LA PUENTE BIDG. DIST. 200



DOUBLE SCALE
 COLLECT CHARGES
 AS INDICATED

49903



PC 1001 29 84032 ON TRACT

