

B.M. CG 3011 ELEV 825.55
 LET IN E END C B 44 FT 5 + 00 FT
 W/L INT GRAND AVE + DIAMOND
 BAR BLVD (MKD BM C-12)

OTTERBEIN QUAD. 1915

PRIVATE ENGINEERS NOTICE TO CONTRACTORS

The existence and location of any underground utility pipes or structures shown on these plans are obtained by search of the available records. To the best of our knowledge there are no existing utilities except as shown on these plans. The contractor is required to take due diligence in measures to protect the utility lines shown and any other lines not of record or not shown on these plans.

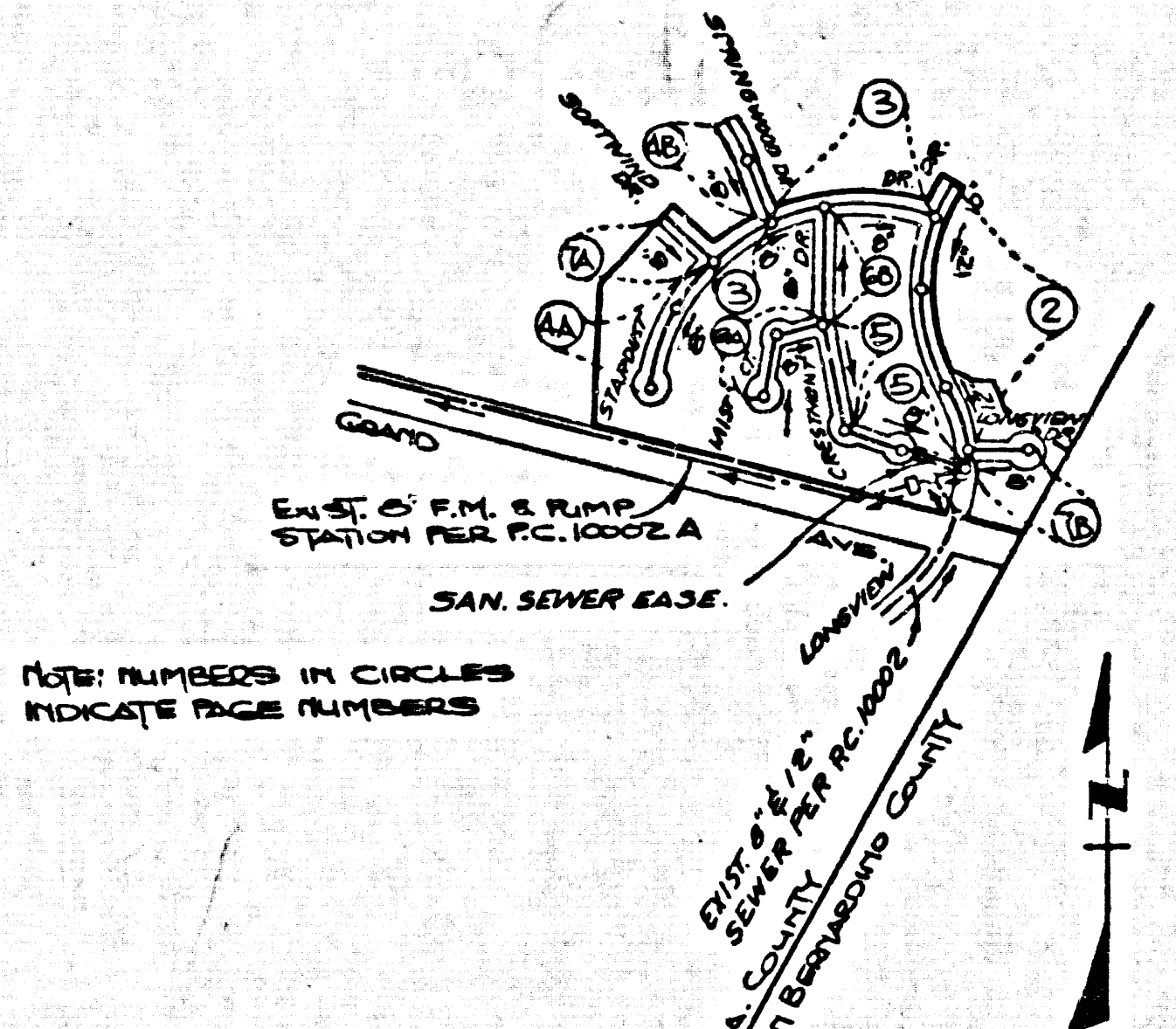
J.H.L.
 Registered Engineer R.C.E. 10233

NO CONNECTION FOR THE DISPOSAL OF INDUSTRIAL WASTES SHALL BE MADE TO SEWERS SHOWN ON THESE DRAWINGS UNTIL A PERMIT FOR INDUSTRIAL WASTEWATER DISCHARGE HAS BEEN ISSUED BY THE SANITATION DISTRICTS FOR SAID CONNECTION.

BEFORE BREAKING INTO OR CONSTRUCTION ON A COUNTY SANITATION DISTRICT SEWER AND PRIOR TO FINAL ACCEPTANCE OF THE PROJECT, SANITATION DISTRICT INSPECTOR SHALL BE NOTIFIED BY PHONE 962-8605 SO THAT REQUIRED INSPECTION CAN BE MADE.

CONSTRUCTION NOTES CONT'D.

- 16. FULL COMPLIANCE WITH PART 13 OF THE SPECIAL PROVISIONS IS REQUIRED FOR THE INSTALLATION OF A.B.S. COMPOSITE PIPE.
- 17. MANHOLE WATER STOP GASKETS & CLAMPS ARE REQUIRED FOR THE CONNECTION OF A.B.S. COMPOSITE PIPE TO MANHOLE STRUCTURES.
- 18. A.B.S. SOLID WALL PIPE MUST BE USED FOR WYE & HOUSE LATERAL CONNECTIONS TO A.B.S. COMPOSITE MAINLINE SEWER PIPE.
- 19. A.B.S. COMPOSITE PIPE SHALL BE RECESSED IN CONFORMANCE WITH THE TABLE IN SECTION 5-2.1 OF PART 13 OF THE SPECIAL PROVISIONS.
- 20. PIPE DEFLECTION FITTINGS ARE REQUIRED FOR RADII OF CURVATURES LESS THAN 300 FEET WHEN USING 8" A.B.S.C.P.
- 21. NO CONNECTIONS FOR DISPOSAL OF INDUSTRIAL WASTES IS ALLOWED IF A.B.S. COMPOSITE PIPE IS USED.
- 22. ϕ INDICATES DEPTH OF H.L. AT PROPERTY LINE.



INDEX MAP
 P.C. 10016 - TRACT NO. 42558
 SCALE: 1" = 600'

ISSUE NO HOUSE CONNECTION PERMITS UNTIL
 R.C.'S 10002 AND 10002A ARE ACCEPTED

GENERAL NOTES:

1. ELEVATIONS ARE IN FEET ABOVE U.S.C. & G.S. SEA LEVEL DATUM OF 1929.
2. NO REVISIONS SHALL BE MADE IN THESE PLANS WITHOUT THE APPROVAL OF THE COUNTY ENGINEER.
3. NO REPRESENTATIVE OF THE COUNTY ENGINEER WILL SURVEY OR LAY OUT ANY PORTION OF THE WORK.
4. GRADES TO WHICH THIS IMPROVEMENT IS TO BE CONSTRUCTED ARE SHOWN ON PLANS AND PROFILES. GRADE POINTS FOR TOP OF CURB, CENTER LINE OF STREET, OR CENTER LINE OF ALLEYS ARE SHOWN BY CIRCLES ON PROFILES. AT ALL POINTS BETWEEN DESIGNATED POINTS THE GRADE SHALL BE ESTABLISHED SO AS TO CONFORM TO A STRAIGHT LINE DRAWN BETWEEN SAID DESIGNATED POINTS.
5. THE PRIVATE ENGINEER SHALL FURNISH THE COUNTY ENGINEER WITH GRADE SHEETS AND STATISTICS FOR ALL HOUSE LATERALS AND 10" WYES AND SHALL PROVIDE STAKES FOR THEM AT THEIR PROPER LOCATIONS WITH STATYONING PLAINLY MARKED. ALL HOUSE LATERALS SHALL BE CONSTRUCTED IN A STRAIGHT ALIGNMENT AT RIGHT ANGLES FROM THE MAIN LINE SEWER EXCEPT AS SHOWN ON THE PLANS. HOUSE LATERALS FROM OWNERS SHALL NOT HAVE AN ANGLE OF LESS THAN 45° WITH THE MAIN LINE SEWER. ANY CHANGE IN ALIGNMENT SHALL BE REQUESTED IN WRITING BY THE PRIVATE ENGINEER.
6. THE PRIVATE ENGINEER SHALL FURNISH THE HOUSE LATERAL DEPTH AT THE PROPERTY LINE BELOW THE TOP OF CURB ELEVATION FOR EACH HOUSE LATERAL ON THE GRADE SHEET.
7. BEFORE WORK CAN BE STARTED, THE CONTRACTOR MUST OBTAIN A PERMIT TO EXCAVATE IN COUNTY STREETS FROM THE L.A. COUNTY ROAD DEPT., DISTRICT OFFICE NO. _____, AND PAY A FEE TO THE COUNTY ENGINEER, 880 S. VERMONT AVENUE, LOS ANGELES, CA 90004, TO COVER THE COST OF CONSTRUCTION INSPECTION AND RECORD PLANS.
8. IF WORK IS TO BE DONE IN A STATE HIGHWAY, A PERMIT MUST BE OBTAINED FROM THE STATE OF CALIFORNIA, DIVISION OF HIGHWAYS, 800 SOUTH BRINK STREET, LOS ANGELES, CALIFORNIA.
9. APPROVAL OF THIS PLAN BY THE COUNTY OF LOS ANGELES DOES NOT CONSTITUTE A REPRESENTATION AS TO THE ACCURACY OF THE LOCATION OF OR THE EXISTENCE OR NON-EXISTENCE OF ANY UNDERGROUND UTILITY PIPE, OR STRUCTURE WITHIN THE LIMITS OF THIS PROJECT. THIS NOTE APPLIES TO ALL PAGES.
10. REFER TO SECTION 7.1.1.1 OF THE STANDARD SPECIFICATIONS, REGARDING SAFETY ORDERS.
11. PRIOR TO THE ISSUANCE OF THE REQUIRED SEWER CONSTRUCTION PERMIT, THE CONTRACTOR SHALL OBTAIN AND FILE WITH THE COUNTY ENGINEER COPIES OF A PERMIT TO EXCAVATE IN COUNTY STREETS FROM THE LOS ANGELES COUNTY ROAD DEPARTMENT, A PERMIT FOR EXCAVATIONS AND TRENCHES FROM THE STATE OF CALIFORNIA, DIVISION OF INDUSTRIAL SAFETY AND CERTIFICATE OF WORKERS COMPENSATION INSURANCE WITH THE DEPARTMENT OF COUNTY ENGINEER, 80 SOUTH VERMONT, RM. 408, LOS ANGELES, CALIFORNIA 90004, NAMED AS THE CERTIFICATE HOLDER TO BE NOTIFIED 30 DAYS PRIOR TO CANCELLATION OF POLICY.

CONSTRUCTION NOTES:

1. WORK SHALL BE CONSTRUCTED ACCORDING TO THE STANDARD SPECIFICATIONS FOR PUBLIC WORKS CONSTRUCTION (1988 EDITION WITH SUPPLEMENTS) AND COUNTY ENGINEER SPECIAL PROVISIONS FOR THE CONSTRUCTION OF SANITARY SEWERS DATED 08/27/76 AND SHALL BE PROSECUTED ONLY IN THE PRESENCE OF THE COUNTY ENGINEER.
2. THE CONTRACTOR SHALL NOTIFY THE ENVIRONMENTAL DEVELOPMENT DIVISION BY TELEPHONE 738-2186, AT LEAST TWENTY-FOUR HOURS BEFORE STARTING ANY WORK UNDER THIS CONTRACT.
3. HOUSE LATERALS TO BE CONSTRUCTED WITH WYES AT PROPERTY LINE 8 FEET BELOW CURB GRADE EXCEPT AS NOTED.
4. WYE OR TEE BRANCHES MAY BE USED FOR CONNECTIONS TO MAINLINE SEWERS EXCEPT AS NOTED.
5. ALL WYE BRANCHES ONLY MAY USE UNDRILLED 10" PRECAST CONCRETE MANHOLES PER 5-2.3.1 EXCEPT AS NOTED.
6. PROVIDE STAKES ON THE PROPERTY LINE OR PROPERTY LINES PRODUCED AT RIGHT ANGLES TO THE SEWER LINE AT THE CENTER LINE OF EACH MANHOLE.
7. MANHOLE TOPS IN UNIMPROVED RIGHTS OF WAY TO BE SIX INCHES ABOVE FINISHED GRADE.
8. WITHIN CLAY PIPE JOINTS SHALL BE TYPE "D" OR "E" PER STANDARD SPECIFICATIONS SECTION 505-2.
9. IF POWER POLES ARE WITHIN THREE FEET OF THE SEWER, THE SEWER SHALL BE ENCASED PER 5-2.3.1. CASE II, TWO FEET ON EACH SIDE FROM THE POINT OF INTERFERENCE.
10. IF DURING THE COURSE OF CONSTRUCTION IT IS DETERMINED THAT THERE IS LESS THAN FOUR FEET OF COVER OVER THE TOP OF A MAIN LINE OR HOUSE LATERAL WHICH IS NOT INDICATED ON THE PLANS, THE PIPE SHALL BE ENCASED PER 5-2.3.1. CASE II UNLESS OTHERWISE APPROVED BY THE COUNTY ENGINEER.
11. ALL JOINTS BETWEEN CAST IRON PIPE AND WITHIN CLAY PIPE SHALL BE MADE WITH A RUBBER SLEEVE JOINT, TYPE "D" OR "E", WITH RUBBER IF NECESSARY PER STANDARD SPECIFICATIONS SECTION 505-2.
12. ALL JOINTS BETWEEN PRECAST CONCRETE MANHOLES SHALL BE MADE WITH APPROVED BITUMENS WITH APPROVED BITUMENS.
13. SEWERS TO BE TESTED FOR LEAKAGE PER SECTION 505-1.4 OF THE STANDARD SPECIFICATIONS AND SPECIAL PROVISIONS.
14. REPAIR/REPLACE ALL TRENCHES WITHIN PAVED AREAS TO MEET L.A. COUNTY ROAD DEPT. OR CALIFORNIA STATE HIGHWAY REQUIREMENTS IN ACCORDANCE WITH PERMITS.
15. FULL COMPLIANCE WITH SECTION 505-1.3.1 OF THE SPECIAL PROVISIONS WILL BE REQUIRED FOR BACKFILL IN STREETS. CERTIFICATION OF BACKFILL COMPACTION AND SAND EQUIVALENTS BY A QUALIFIED, REGISTERED TESTING LABORATORY SHALL BE PROVIDED BY THE PERMITTEE PRIOR TO THE ISSUANCE OF A CERTIFICATE OF PARTIAL ACCEPTANCE.
16. SPECIAL BACKFILL REQUIREMENTS FOR CONSTRUCTION: (A) BACKFILL, TRENCH AND REPLACE OTHER EARTH SO AS TO ACHIEVE THE NATURAL OR FINISHED GRADES AND SLOPES SHOWN ON THE GRADING PLAN APPROVED FOR THIS DEVELOPMENT BY THE BUILDING AND SAFETY DIVISION; (B) ALL BACKFILL AND EARTH REPLACED SHALL BE COMPACTED TO A MINIMUM OF 90% OF MAXIMUM DENSITY PER A.S.T.M. 97B METHOD OF TEST UNLESS AS NOTED; ACCEPTABLE CERTIFICATION OF SUCH COMPACTION SHALL BE SUBMITTED TO THE ENVIRONMENTAL DEVELOPMENT DIVISION.

DOUBLE SCALE

PROFILE, ALIGNMENT AND GRADE OF PAGE 1

SANITARY SEWERS

TO BE CONSTRUCTED IN
TRACT No. 42558
 PRIVATE CONTRACT NO. 10016

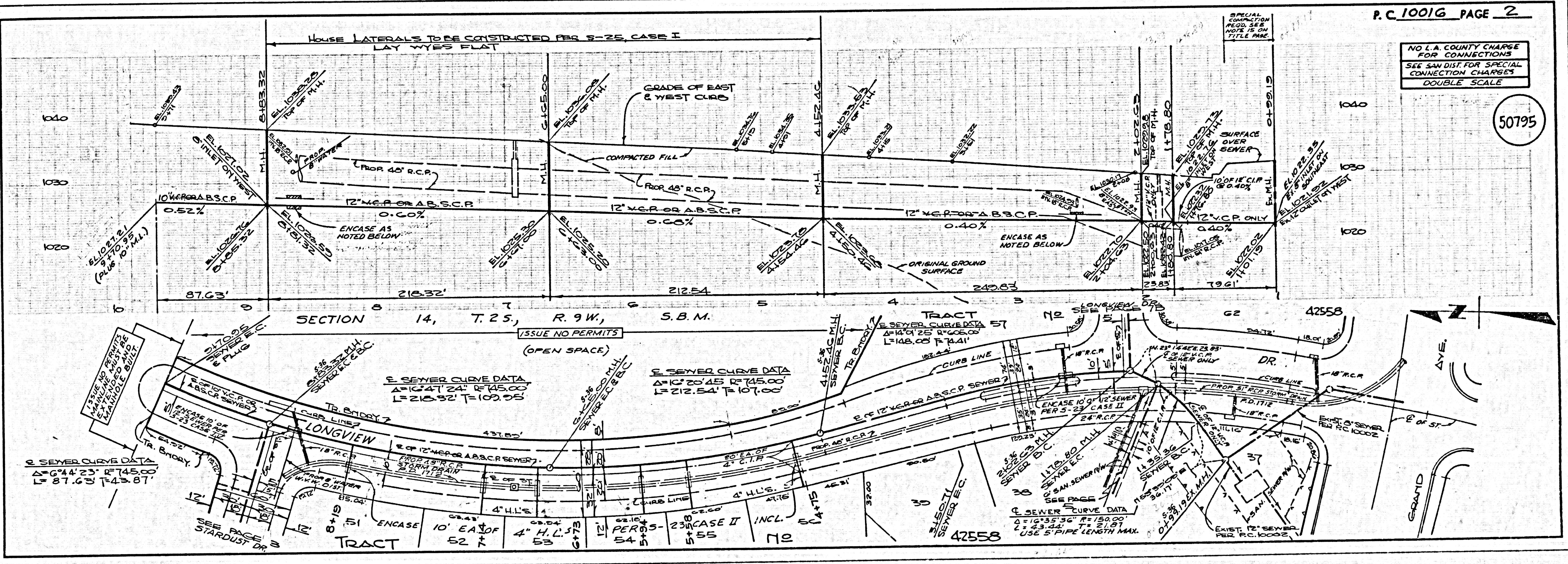
W.S. 39-D,3
 4 SHEETS, 7 PAGES
 DATE: OCTOBER, 1981
 PREPARED IN THE OFFICES OF
 LIND & HILLEBRAND, INC.
 2026 HUNTINGTON DRIVE
 BOUNTY VALLEY, CA 91005
 BY: *J.H.L.*
 REG. C.E. No. 10233

50794

THE FOLLOWING LATEST REVISED STANDARD PLANS ON FILE IN THE OFFICE OF THE COUNTY ENGINEER SHALL APPLY IN THE CONSTRUCTION OF THIS PROJECT:

1.0000B	5-1
MINIMUM PAVEMENT REQUIREMENTS	5-2
2.0000B	5-3
STANDARD MANHOLE STEP	5-4
3.0000B	5-5
REWORKING FOR SEWER PIPE	5-6
4.0000B	5-7
CHANGING AND ENLARGING	5-8
WYE OR TEE SUPPORT	5-9
5.0000B	5-10
ALLOWABLE TRENCH WIDTHS	5-11
6.0000B	5-12
LOCATING MANHOLES FRAME AND COVER	5-13
7.0000B	5-14
NON-SUPPORTS PRECAST CONCRETE MANHOLES	5-15
8.0000B	5-16
9.0000B	5-17
10.0000B	5-18
11.0000B	5-19
12.0000B	5-20
13.0000B	5-21
14.0000B	5-22
15.0000B	5-23
16.0000B	5-24
17.0000B	5-25
18.0000B	5-26
19.0000B	5-27
20.0000B	5-28
21.0000B	5-29
22.0000B	5-30
23.0000B	5-31
24.0000B	5-32
25.0000B	5-33
26.0000B	5-34
27.0000B	5-35
28.0000B	5-36
29.0000B	5-37
30.0000B	5-38
31.0000B	5-39
32.0000B	5-40
33.0000B	5-41
34.0000B	5-42
35.0000B	5-43
36.0000B	5-44
37.0000B	5-45
38.0000B	5-46
39.0000B	5-47
40.0000B	5-48
41.0000B	5-49
42.0000B	5-50
43.0000B	5-51
44.0000B	5-52
45.0000B	5-53
46.0000B	5-54
47.0000B	5-55
48.0000B	5-56
49.0000B	5-57
50.0000B	5-58
51.0000B	5-59
52.0000B	5-60
53.0000B	5-61
54.0000B	5-62
55.0000B	5-63
56.0000B	5-64
57.0000B	5-65
58.0000B	5-66
59.0000B	5-67
60.0000B	5-68
61.0000B	5-69
62.0000B	5-70
63.0000B	5-71
64.0000B	5-72
65.0000B	5-73
66.0000B	5-74
67.0000B	5-75
68.0000B	5-76
69.0000B	5-77
70.0000B	5-78
71.0000B	5-79
72.0000B	5-80
73.0000B	5-81
74.0000B	5-82
75.0000B	5-83
76.0000B	5-84
77.0000B	5-85
78.0000B	5-86
79.0000B	5-87
80.0000B	5-88
81.0000B	5-89
82.0000B	5-90
83.0000B	5-91
84.0000B	5-92
85.0000B	5-93
86.0000B	5-94
87.0000B	5-95
88.0000B	5-96
89.0000B	5-97
90.0000B	5-98
91.0000B	5-99
92.0000B	5-100

COUNTY OF LOS ANGELES, CALIFORNIA
 STEPHEN J. KOONCE, COUNTY ENGINEER CHARLES W. CARRY, CHIEF ENGINEER
 CO. SAN DIST. NO. 25
 APPROVED *James Miller 10/10/81* APPROVED *Charles W. Carry 10/10/81*
 SAN DIMAS REGIONAL ENGINEER DATE
 CHECKED *Walter Davis 10/10/81*
 DATE
 SAN DIMAS, BLDG. DIST. 10000



P.C. 10016 PAGE 2

NO L.A. COUNTY CHARGE
 FOR CONNECTIONS
 SEE SAN DIST. FOR SPECIAL
 CONNECTION CHARGES
 DOUBLE SCALE

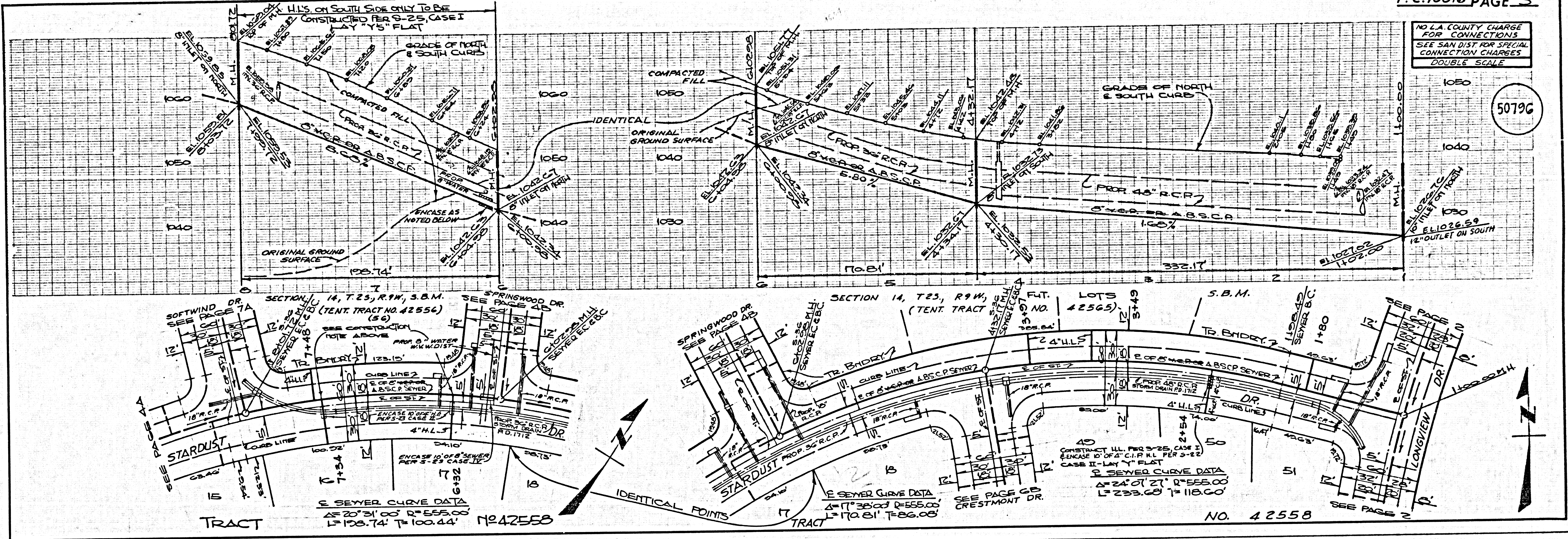
50795

BC 10016

82525 ON TRACT

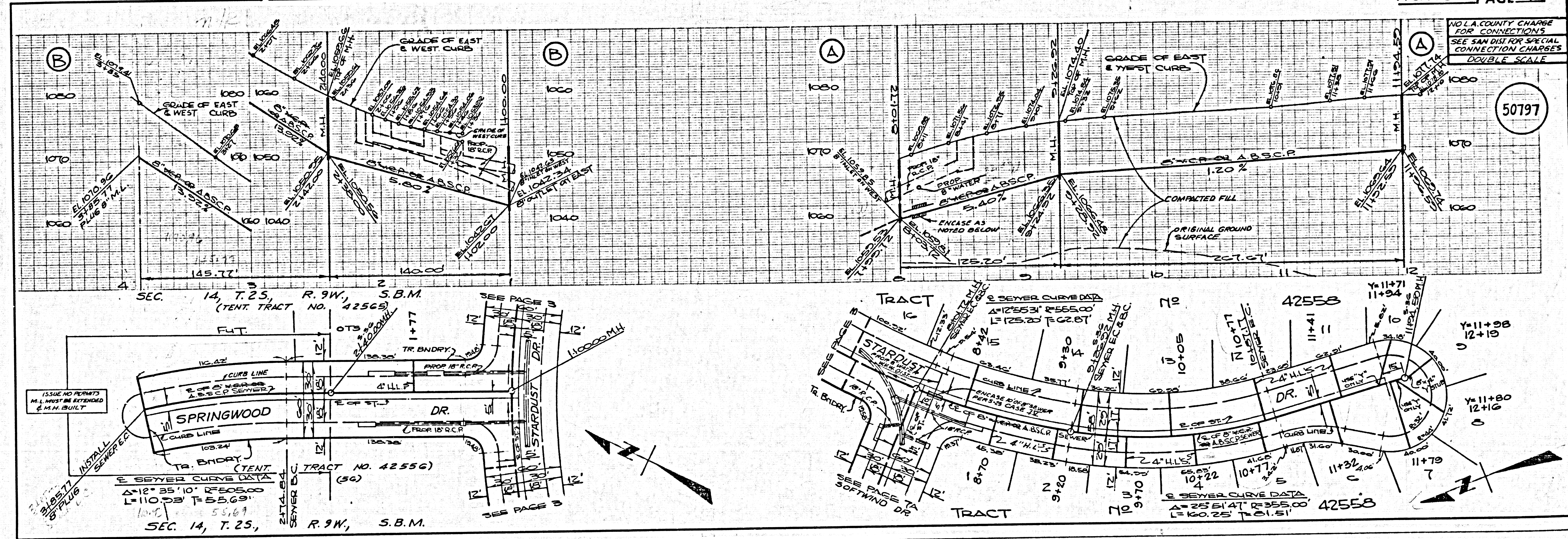
NO L.A. COUNTY CHARGE FOR CONNECTIONS SEE SAN DIST FOR SPECIAL CONNECTION CHARGES DOUBLE SCALE

50796



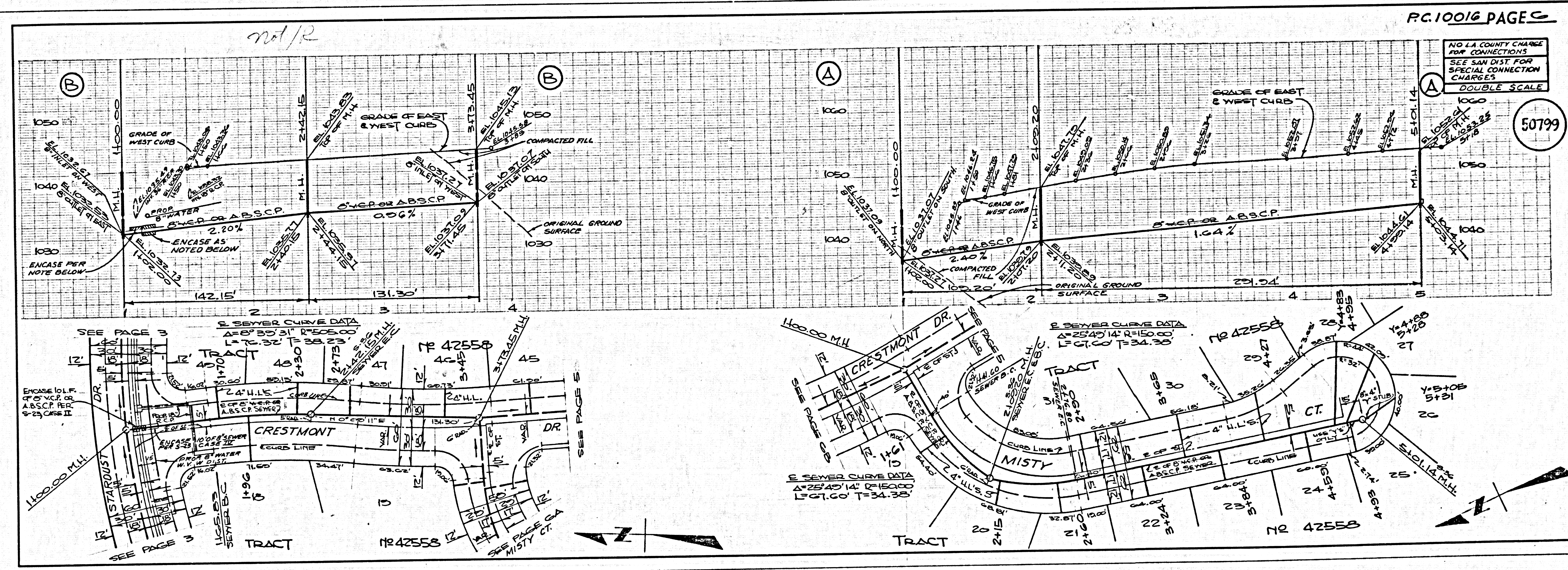
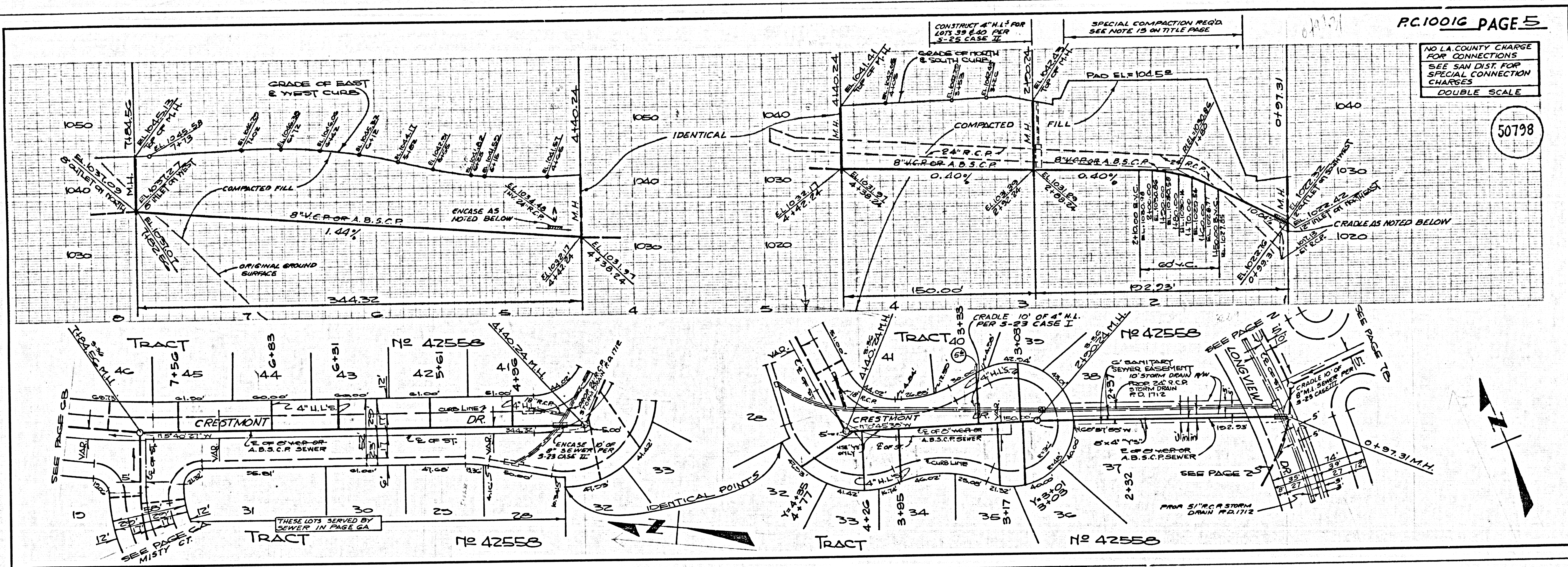
NO L.A. COUNTY CHARGE FOR CONNECTIONS SEE SAN DIST FOR SPECIAL CONNECTION CHARGES DOUBLE SCALE

50797



510013A

02254-01-10A11

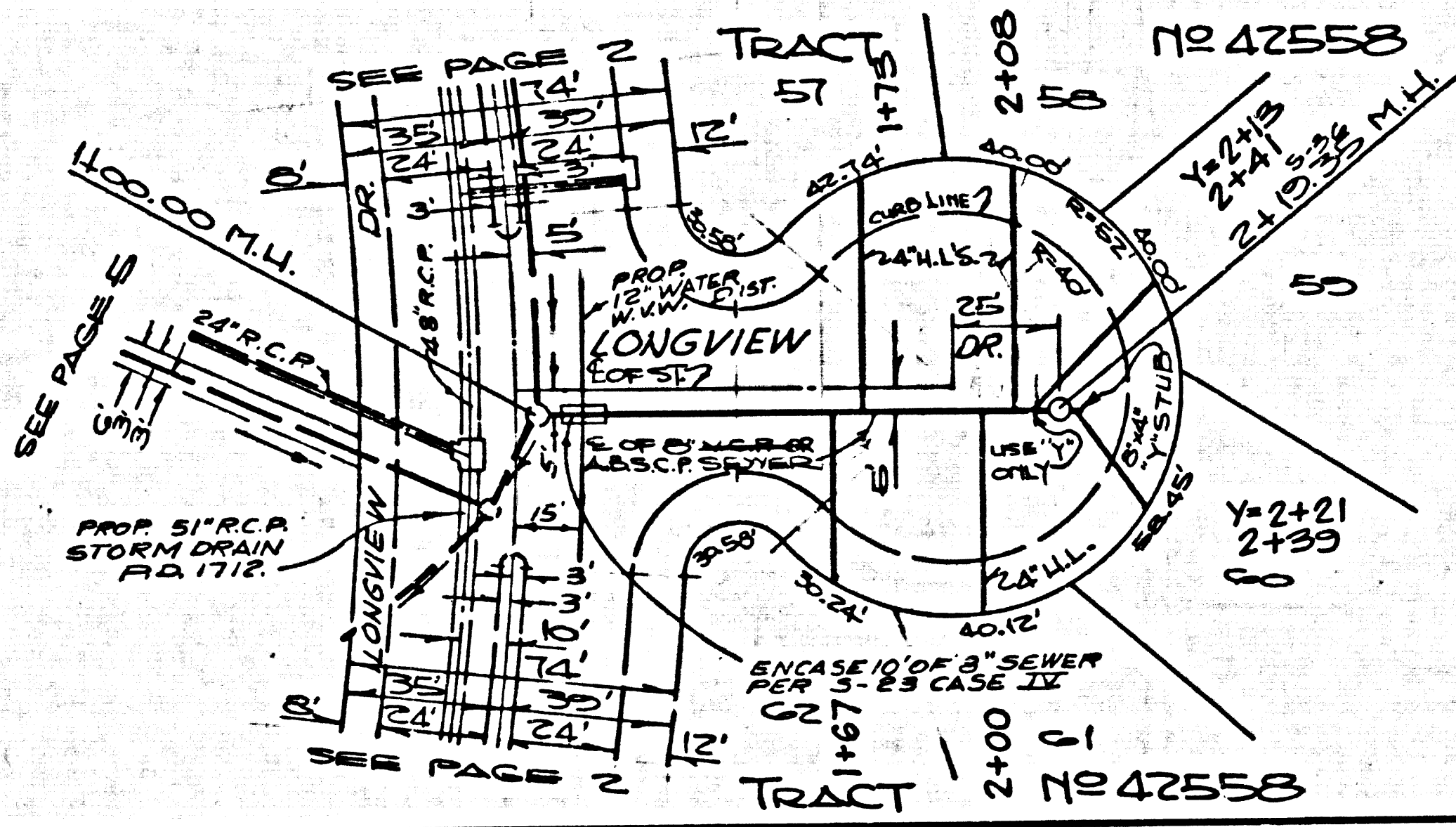
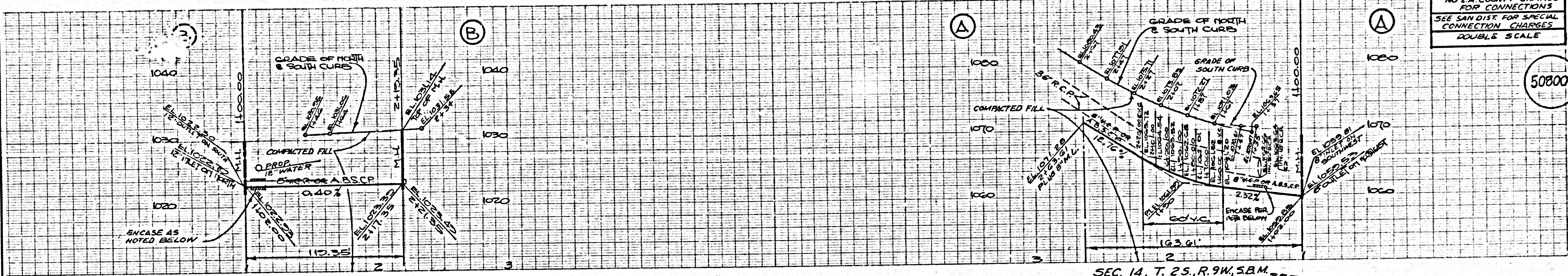


PC.10016A

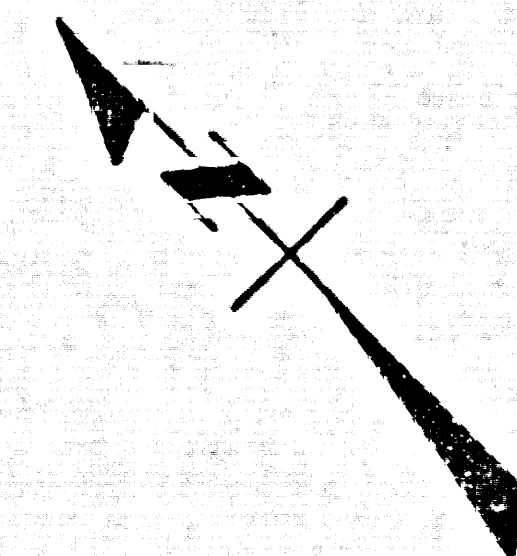
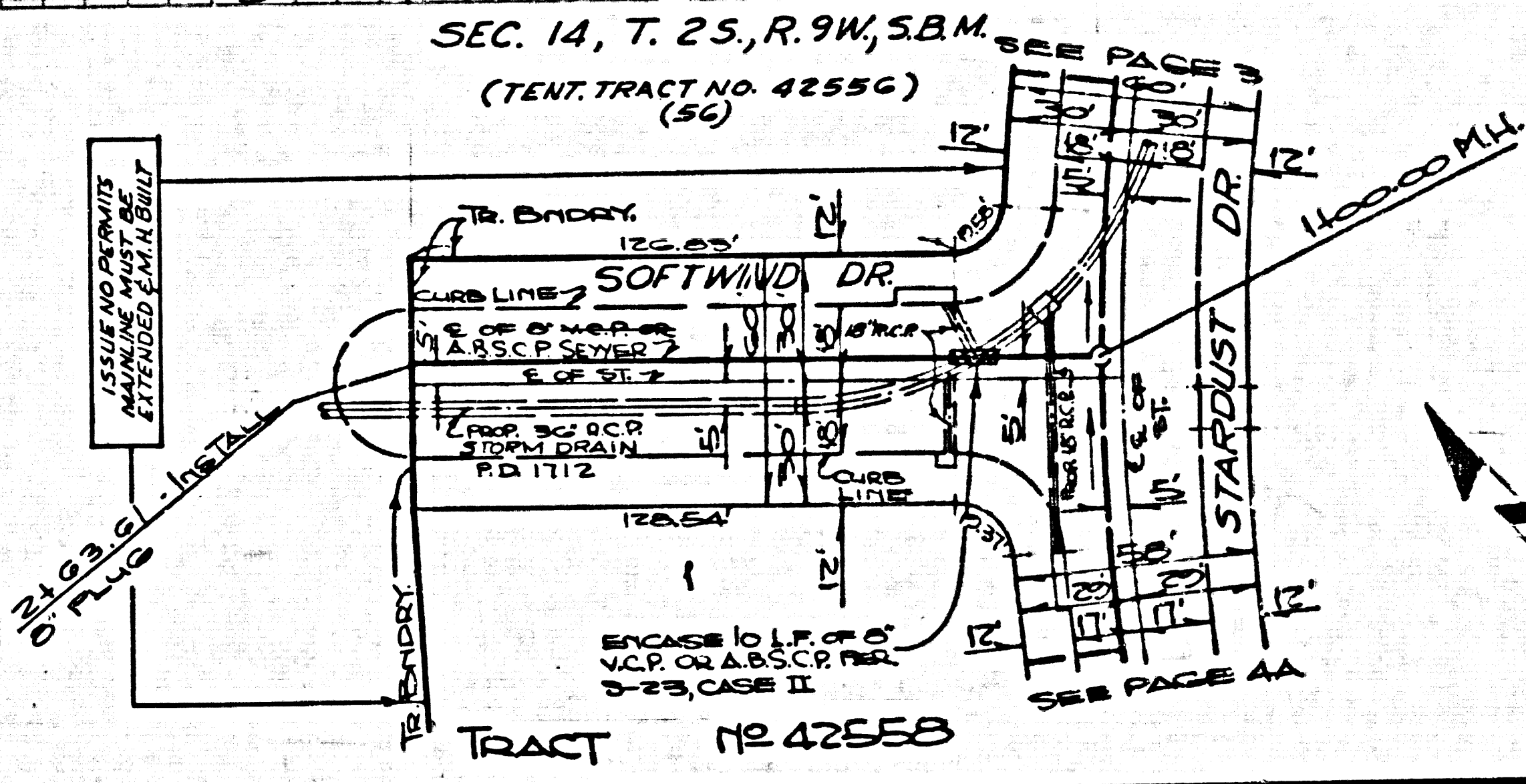
B25A .0M TCAIT

NO L.A. COUNTY CHARGE FOR CONNECTIONS
SEE SAN DIST. FOR SPECIAL CONNECTION CHARGES
DOUBLE SCALE

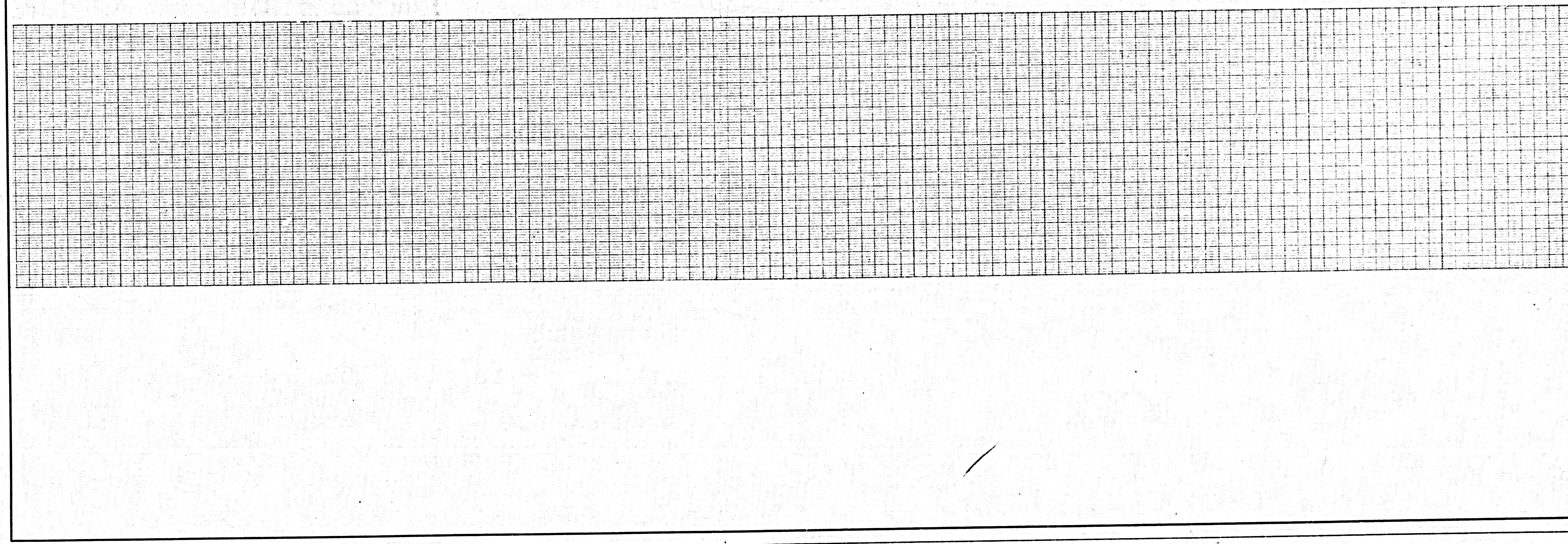
50800



S-23 IV



PAGE



P.C.10016

TRACT NO. 42558