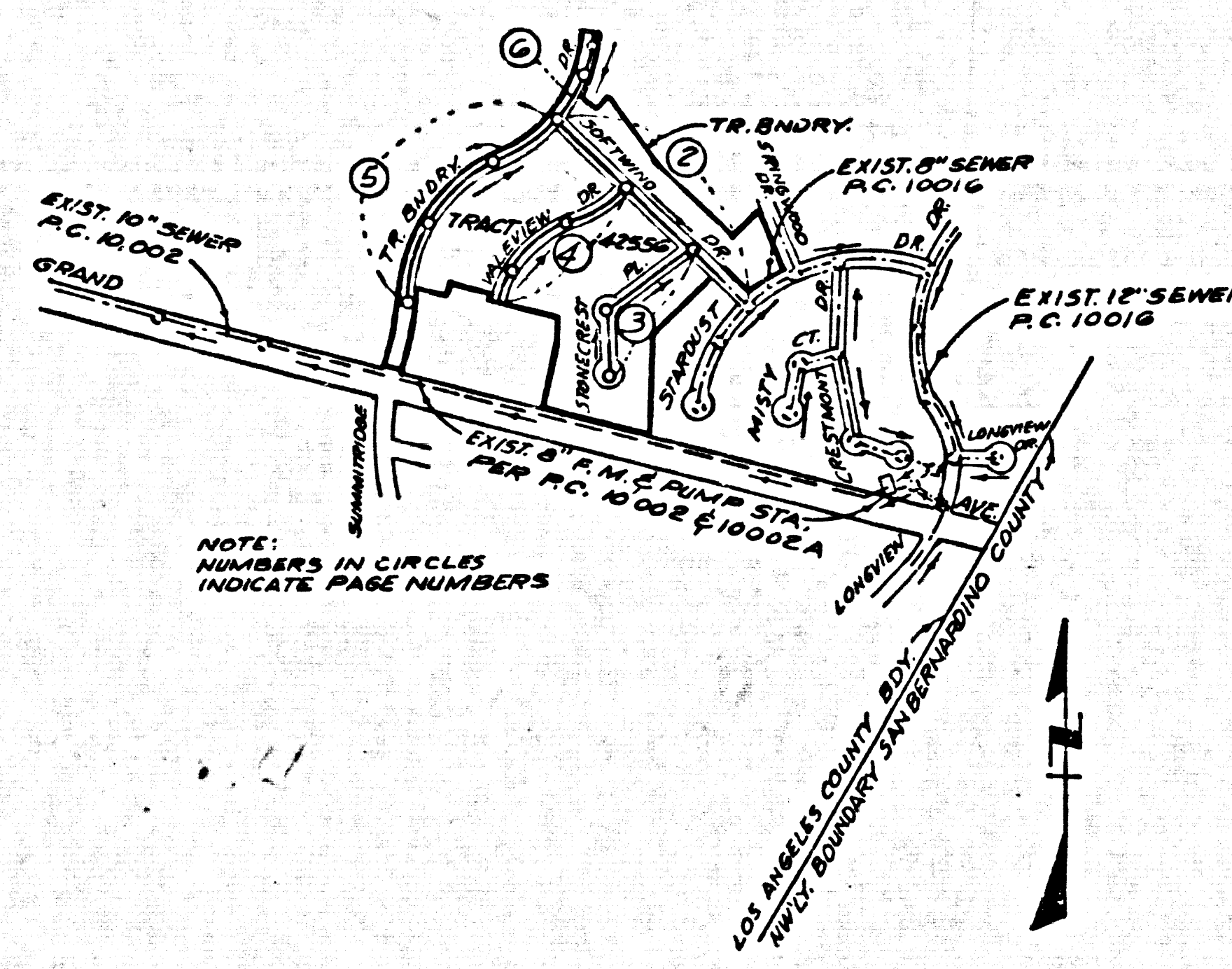


B.M. CG 3911 ELEV. 895.556
 LET IN E END C 8'4" FT 5' +
 36 FT W.C. INT GRAND AVE
 A DIAMOND BAR BLVD
 (MKD BM C-12)
 OTTERBEIN QUAD. 19 75



INDEX MAP
 TRACT NO. 42556
 P.C. 10017
 SCALE: 1"=600'

PRIVATE ENGINEERS NOTICE TO CONTRACTORS

The existence and location of any underground utility pipes or structures shown on these plans are obtained by search of the available records. To the best of our knowledge there are no existing utilities except as shown on these plans. The contractor is required to take due precautionary measures to protect the utility lines shown and any other lines not of record or not shown on these plans.

J.R.C.
 Registered Engineer R.C.E. 19233

NO CONNECTION FOR THE DISPOSAL OF INDUSTRIAL WASTES SHALL BE MADE TO SEWERS SHOWN ON THESE DRAWINGS UNTIL A PERMIT FOR INDUSTRIAL WASTEWATER DISCHARGE HAS BEEN ISSUED BY THE SANITATION DISTRICTS FOR SAID CONNECTION.

BEFORE BREAKING INTO OR CONSTRUCTION ON A COUNTY SANITATION DISTRICT SEWER AND PRIOR TO FINAL ACCEPTANCE OF THE PROJECT, SANITATION DISTRICT INSPECTOR SHALL BE NOTIFIED BY PHONE 962-8605, SO THAT REQUIRED INSPECTION CAN BE MADE.

CONSTRUCTION NOTES CONT'D.

16. FULL COMPLIANCE WITH PART III OF THE SPECIAL PROVISIONS IS REQUIRED FOR THE INSTALLATION OF A.B.S. COMPOSITE PIPE.
17. MANHOLE WATER STOP BASKETS & CLAMPS ARE REQUIRED FOR THE CONNECTION OF A.B.S. COMPOSITE PIPE TO MANHOLE STRUCTURES.
18. A.B.S. SOLID WALL PIPE MUST BE USED FOR WYE & HOUSE LATERAL CONNECTIONS TO A.B.S. COMPOSITE MAINLINE SEWER PIPE.
19. A.B.S. COMPOSITE PIPE SHALL BE BEDDED IN CONFORMANCE WITH THE TABLE IN SECTION B-3.1 OF PART III OF THE SPECIAL PROVISIONS.
20. PIPE DEFLECTION FITTINGS ARE REQUIRED FOR RADII OF CURVATURE LESS THAN 300 FEET MANHOLE TO 8" A.B.S. P.
21. NO CONNECTIONS FOR DISPOSAL OF INDUSTRIAL WASTE IS ALLOWED IF A.B.S. COMPOSITE PIPE IS USED.

ISSUE NO HOUSE CONNECTION PERMITS UNTIL P.C.'S 1001G, 10002 & 10002A ARE ACCEPTED

GENERAL NOTES: DOUBLE SCALE

1. ELEVATIONS ARE IN FEET ABOVE U.S.C. & G.S. SEA LEVEL, DATUM OF 1988.
2. NO REVISIONS SHALL BE MADE IN THESE PLANS WITHOUT THE APPROVAL OF THE COUNTY ENGINEER.
3. NO REPRESENTATIVE OF THE COUNTY ENGINEER WILL SURVEY OR LAY OUT ANY PORTION OF THE WORK.
4. GRADES TO WHICH THIS IMPROVEMENT IS TO BE CONSTRUCTED ARE SHOWN ON PLANS AND PROFILES. GRADE POINTS FOR TOP OF CURBS, CENTER LINE OF STREETS, OR CENTER LINE OF ALLEYS ARE SHOWN BY CIRCLES ON PROFILES. AT ALL POINTS BETWEEN DESIGNATED POINTS THE GRADE SHALL BE ESTABLISHED SO AS TO CONFORM TO A STRAIGHT LINE DRAWN BETWEEN SAID DESIGNATED POINTS.
5. THE PRIVATE ENGINEER SHALL FURNISH THE COUNTY ENGINEER WITH GRADE SHEETS AND STATIONING FOR ALL HOUSE LATERALS AND "Y" OR "T" BRANCHES AND SHALL PROVIDE STAKES FOR THEM AT THEIR PROPER LOCATIONS WITH STATIONING PLAINLY MARKED. ALL HOUSE LATERALS SHALL BE CONSTRUCTED IN A STRAIGHT ALIGNMENT AT RIGHT ANGLES FROM THE MAIN LINE SEWER EXCEPT AS SHOWN ON THE PLANS. HOUSE LATERALS FROM CHIMNEYS SHALL NOT HAVE AN ANGLE OF LESS THAN 45° WITH THE MAIN LINE SEWER. ANY CHANGE IN ALIGNMENT SHALL BE REQUESTED IN WRITING BY THE PRIVATE ENGINEER.
6. THE PRIVATE ENGINEER SHALL FURNISH THE HOUSE LATERAL DEPTH AT THE PROPERTY LINE BELOW THE TOP OF CURB ELEVATION FOR EACH HOUSE LATERAL ON THE GRADE SHEET.
7. BEFORE WORK CAN BE STARTED, THE CONTRACTOR MUST OBTAIN A PERMIT TO EXCAVATE IN COUNTY STREETS FROM THE L.A. COUNTY ROAD DEPT., DISTRICT OFFICE NO. 1, AND PAY A FEE TO THE COUNTY ENGINEER, 800 S. VERMONT AVENUE, LOS ANGELES, CA 90005, TO COVER THE COST OF CONSTRUCTION INSPECTION AND RECORD PLANS.
8. IF WORK IS TO BE DONE IN A STATE HIGHWAY, A PERMIT MUST BE OBTAINED FROM THE STATE OF CALIFORNIA, DIVISION OF HIGHWAY, 120 SOUTH SPRING STREET, LOS ANGELES, CALIFORNIA.
9. APPROVAL OF THIS PLAN BY THE COUNTY OF LOS ANGELES DOES NOT CONSTITUTE A REPRESENTATION AS TO THE ACCURACY OF THE LOCATION OF OR THE EXISTENCE OR NON-EXISTENCE OF ANY UNDERGROUND UTILITY PIPE, OR STRUCTURE WITHIN THE LIMITS OF THE PROJECT. THIS NOTE APPLIES TO ALL PAGES.
10. REFER TO SECTION 7.16.4.1 OF THE STANDARD SPECIFICATIONS, REBANDING SAFETY ORDERS.
11. PRIOR TO THE ISSUANCE OF THE REQUIRED SEWER CONSTRUCTION PERMIT, THE CONTRACTOR SHALL OBTAIN AND FILE WITH THE COUNTY ENGINEER COPIES OF A PERMIT TO EXCAVATE IN COUNTY STREETS FROM THE LOS ANGELES COUNTY ROAD DEPARTMENT, A PERMIT FOR EXCAVATIONS AND TRENCHES FROM THE STATE OF CALIFORNIA, DIVISION OF INDUSTRIAL SAFETY AND A CERTIFICATE OF WORKERS COMPENSATION INSURANCE WITH THE DEPARTMENT OF COUNTY ENGINEER, 800 SOUTH VERMONT, RM. 408, LOS ANGELES, CALIFORNIA 90005, NAMED AS THE CERTIFICATE HOLDER TO BE NOTIFIED 30 DAYS PRIOR TO CANCELLATION OF POLICY.

CONSTRUCTION NOTES:

1. WORK SHALL BE CONSTRUCTED ACCORDING TO THE STANDARD SPECIFICATIONS FOR PUBLIC WORKS CONSTRUCTION (1988 EDITION WITH SUPPLEMENTS AND COUNTY ENGINEER SPECIAL PROVISIONS FOR THE CONSTRUCTION OF SANITARY SEWERS DATED SEPT. 24, 1976) AND SHALL BE PROTECTED ONLY IN THE PRESENCE OF THE COUNTY ENGINEER.
2. THE CONTRACTOR SHALL NOTIFY THE ENVIRONMENTAL DEVELOPMENT DIVISION BY TELEPHONE, 726-5186, AT LEAST TWENTY-FOUR HOURS BEFORE STARTING ANY WORK UNDER THE CONTRACT.
3. HOUSE LATERALS TO BE CONSTRUCTED WITH INVERTS AT PROPERTY LINE 4 FEET BELOW CURB GRADE EXCEPT AS NOTED.
4. WYE OR TEE BRANCHES MAY BE USED FOR CONNECTIONS TO MAINLINE SEWERS EXCEPT AS NOTED.
5. ALL BRANCH CONNECTIONS TO MAINLINE SEWERS SHALL BE MADE BY PRECAST CONCRETE MANHOLES PER B-3L EXCEPT AS NOTED. STRUCTURES SHALL BE EITHER BRICK MANHOLES PER B-4 OR PRECAST CONCRETE MANHOLES PER B-3L EXCEPT AS NOTED.
6. PROVIDE STAKES ON THE PROPERTY LINE OR PROPERTY LINES PRODUCED AT RIGHT ANGLES TO THE SEWER LINE AT THE CENTER LINE OF EACH MANHOLE.
7. MANHOLE TOPS IN UNIMPROVED AREAS MAY TO BE SIX INCHES ABOVE FINISHED GRADE.
8. WITHIN CLAY PIPE JOINTS SHALL BE TYPE "O" OR "N" PER STANDARD SPECIFICATIONS SECTION 308-3.
9. IF A POWER POLE IS WITHIN THREE FEET OF THE SEWER, THE SEWER SHALL BE ENCASED, PER B-3L CASE 8, TWO FEET ON EACH SIDE FROM THE POINT OF INTERFERENCE.
10. IF DURING THE COURSE OF CONSTRUCTION IT IS DETERMINED THAT THERE IS LESS THAN FOUR FEET OF COVER OVER THE TOP OF A MAIN LINE OR HOUSE LATERAL SEWER WHICH IS NOT INDICATED ON THE PLANS, THE PIPE SHALL BE ENCASED PER B-3L CASE 8 UNLESS OTHERWISE APPROVED BY THE COUNTY ENGINEER.
11. ALL JOINTS BETWEEN CAST IRON PIPE AND WITHIN CLAY PIPE SHALL BE MADE WITH A RUBBER SLEEVE JOINT, TYPE "O" OR "N", WITH BUSHING IF NECESSARY PER STANDARD SPECIFICATIONS SECTION 308-3. FITTINGS SHALL BE TYPE "O" OR "N" PER STANDARD SPECIFICATIONS SECTION 308-3 AND SPECIAL PROVISIONS.
12. SEWERS TO BE TESTED FOR LEAKAGE PER SECTION 308-14 OF THE STANDARD SPECIFICATIONS AND SPECIAL PROVISIONS.
13. REWORK ALL TRENCHES WITHIN PAVED AREAS TO MEET L.A. COUNTY ROAD DEPT. OR CALIFORNIA STATE HIGHWAY REQUIREMENTS IN ACCORDANCE WITH PERMITS.
14. FULL COMPLIANCE WITH SECTION 308-1.8 OF THE SPECIAL PROVISIONS WILL BE REQUIRED FOR BACKFILL IN STREETS. ORIENTATION OF BACKFILL COMPACTOR AND SAND EQUIVALENTS BY A QUALIFIED, REGISTERED TESTING LABORATORY SHALL BE PROVIDED BY THE PERMITTEE PRIOR TO THE ISSUANCE OF A CERTIFICATE OF PARTIAL ACCEPTANCE.
15. SPECIAL BACKFILL IN EASEMENT CONSTRUCTION: (A) BACKFILL TRENCH AND REPLACE OTHER EARTH SO AS TO ACHIEVE THE NATURAL OR FINISHED GRADES AND SLOPES SHOWN ON THE GRADING PLAN APPROVED FOR THE DEVELOPMENT BY THE BUILDING AND SAFETY DIVISION; (B) ALL BACKFILL AND EARTH REPLACEMENT SHALL BE COMPACTED TO A MINIMUM OF 90% OF MAXIMUM DENSITY PER A.S.T.M. STD. METHOD OF TEST D9557 AS MODIFIED, ACCEPTABLE CERTIFICATION OF SUCH COMPACTATION SHALL BE SUBMITTED TO THE ENVIRONMENTAL DEVELOPMENT DIVISION.

SANITARY SEWERS

TO BE CONSTRUCTED IN
TRACT No. 42556
PRIVATE CONTRACT NO. 10017

W.S. 39-03
 3 SHEETS, 6 PAGES
 SCALE: VERT. 1"=5' HORIZ. 1"=40'
 OCTOBER, 1981

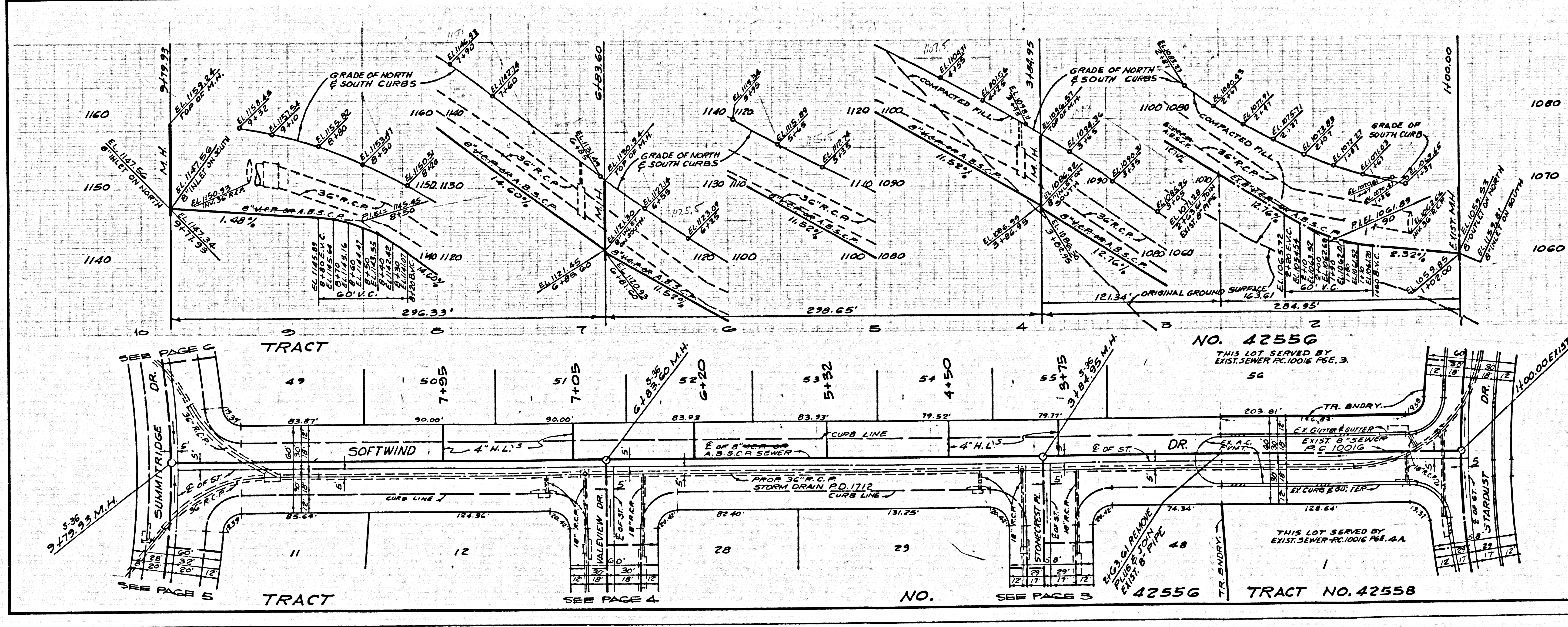
PREPARED IN THE OFFICES OF
 LIND & HILLERUD, INC.
 8056 WASHINGTON DRIVE
 SAN MARINO CA 91088
 BY: *J.R.C.*
 REG. C.E. No. 13233

50865

THE FOLLOWING LATEST REVISED STANDARD PLANS ON FILE IN THE OFFICE OF THE COUNTY ENGINEER SHALL APPLY IN THE CONSTRUCTION OF THIS PROJECT:

MINIMUM PUBLIC SANITARY REQUIREMENTS	5-1
MINIMUM PUBLIC SANITARY REQUIREMENTS	5-2
MINIMUM PUBLIC SANITARY REQUIREMENTS	5-3
MINIMUM PUBLIC SANITARY REQUIREMENTS	5-4
MINIMUM PUBLIC SANITARY REQUIREMENTS	5-5
MINIMUM PUBLIC SANITARY REQUIREMENTS	5-6
MINIMUM PUBLIC SANITARY REQUIREMENTS	5-7
MINIMUM PUBLIC SANITARY REQUIREMENTS	5-8
MINIMUM PUBLIC SANITARY REQUIREMENTS	5-9
MINIMUM PUBLIC SANITARY REQUIREMENTS	5-10
MINIMUM PUBLIC SANITARY REQUIREMENTS	5-11
MINIMUM PUBLIC SANITARY REQUIREMENTS	5-12
MINIMUM PUBLIC SANITARY REQUIREMENTS	5-13
MINIMUM PUBLIC SANITARY REQUIREMENTS	5-14
MINIMUM PUBLIC SANITARY REQUIREMENTS	5-15
MINIMUM PUBLIC SANITARY REQUIREMENTS	5-16
MINIMUM PUBLIC SANITARY REQUIREMENTS	5-17
MINIMUM PUBLIC SANITARY REQUIREMENTS	5-18
MINIMUM PUBLIC SANITARY REQUIREMENTS	5-19
MINIMUM PUBLIC SANITARY REQUIREMENTS	5-20
MINIMUM PUBLIC SANITARY REQUIREMENTS	5-21
MINIMUM PUBLIC SANITARY REQUIREMENTS	5-22
MINIMUM PUBLIC SANITARY REQUIREMENTS	5-23
MINIMUM PUBLIC SANITARY REQUIREMENTS	5-24
MINIMUM PUBLIC SANITARY REQUIREMENTS	5-25
MINIMUM PUBLIC SANITARY REQUIREMENTS	5-26
MINIMUM PUBLIC SANITARY REQUIREMENTS	5-27
MINIMUM PUBLIC SANITARY REQUIREMENTS	5-28
MINIMUM PUBLIC SANITARY REQUIREMENTS	5-29
MINIMUM PUBLIC SANITARY REQUIREMENTS	5-30
MINIMUM PUBLIC SANITARY REQUIREMENTS	5-31
MINIMUM PUBLIC SANITARY REQUIREMENTS	5-32
MINIMUM PUBLIC SANITARY REQUIREMENTS	5-33
MINIMUM PUBLIC SANITARY REQUIREMENTS	5-34
MINIMUM PUBLIC SANITARY REQUIREMENTS	5-35
MINIMUM PUBLIC SANITARY REQUIREMENTS	5-36
MINIMUM PUBLIC SANITARY REQUIREMENTS	5-37
MINIMUM PUBLIC SANITARY REQUIREMENTS	5-38
MINIMUM PUBLIC SANITARY REQUIREMENTS	5-39
MINIMUM PUBLIC SANITARY REQUIREMENTS	5-40
MINIMUM PUBLIC SANITARY REQUIREMENTS	5-41
MINIMUM PUBLIC SANITARY REQUIREMENTS	5-42
MINIMUM PUBLIC SANITARY REQUIREMENTS	5-43
MINIMUM PUBLIC SANITARY REQUIREMENTS	5-44
MINIMUM PUBLIC SANITARY REQUIREMENTS	5-45
MINIMUM PUBLIC SANITARY REQUIREMENTS	5-46
MINIMUM PUBLIC SANITARY REQUIREMENTS	5-47
MINIMUM PUBLIC SANITARY REQUIREMENTS	5-48
MINIMUM PUBLIC SANITARY REQUIREMENTS	5-49
MINIMUM PUBLIC SANITARY REQUIREMENTS	5-50
MINIMUM PUBLIC SANITARY REQUIREMENTS	5-51
MINIMUM PUBLIC SANITARY REQUIREMENTS	5-52
MINIMUM PUBLIC SANITARY REQUIREMENTS	5-53
MINIMUM PUBLIC SANITARY REQUIREMENTS	5-54
MINIMUM PUBLIC SANITARY REQUIREMENTS	5-55
MINIMUM PUBLIC SANITARY REQUIREMENTS	5-56
MINIMUM PUBLIC SANITARY REQUIREMENTS	5-57
MINIMUM PUBLIC SANITARY REQUIREMENTS	5-58
MINIMUM PUBLIC SANITARY REQUIREMENTS	5-59
MINIMUM PUBLIC SANITARY REQUIREMENTS	5-60
MINIMUM PUBLIC SANITARY REQUIREMENTS	5-61
MINIMUM PUBLIC SANITARY REQUIREMENTS	5-62
MINIMUM PUBLIC SANITARY REQUIREMENTS	5-63
MINIMUM PUBLIC SANITARY REQUIREMENTS	5-64
MINIMUM PUBLIC SANITARY REQUIREMENTS	5-65
MINIMUM PUBLIC SANITARY REQUIREMENTS	5-66
MINIMUM PUBLIC SANITARY REQUIREMENTS	5-67
MINIMUM PUBLIC SANITARY REQUIREMENTS	5-68
MINIMUM PUBLIC SANITARY REQUIREMENTS	5-69
MINIMUM PUBLIC SANITARY REQUIREMENTS	5-70
MINIMUM PUBLIC SANITARY REQUIREMENTS	5-71
MINIMUM PUBLIC SANITARY REQUIREMENTS	5-72
MINIMUM PUBLIC SANITARY REQUIREMENTS	5-73
MINIMUM PUBLIC SANITARY REQUIREMENTS	5-74
MINIMUM PUBLIC SANITARY REQUIREMENTS	5-75
MINIMUM PUBLIC SANITARY REQUIREMENTS	5-76
MINIMUM PUBLIC SANITARY REQUIREMENTS	5-77
MINIMUM PUBLIC SANITARY REQUIREMENTS	5-78
MINIMUM PUBLIC SANITARY REQUIREMENTS	5-79
MINIMUM PUBLIC SANITARY REQUIREMENTS	5-80
MINIMUM PUBLIC SANITARY REQUIREMENTS	5-81
MINIMUM PUBLIC SANITARY REQUIREMENTS	5-82
MINIMUM PUBLIC SANITARY REQUIREMENTS	5-83
MINIMUM PUBLIC SANITARY REQUIREMENTS	5-84
MINIMUM PUBLIC SANITARY REQUIREMENTS	5-85
MINIMUM PUBLIC SANITARY REQUIREMENTS	5-86
MINIMUM PUBLIC SANITARY REQUIREMENTS	5-87
MINIMUM PUBLIC SANITARY REQUIREMENTS	5-88
MINIMUM PUBLIC SANITARY REQUIREMENTS	5-89
MINIMUM PUBLIC SANITARY REQUIREMENTS	5-90
MINIMUM PUBLIC SANITARY REQUIREMENTS	5-91
MINIMUM PUBLIC SANITARY REQUIREMENTS	5-92
MINIMUM PUBLIC SANITARY REQUIREMENTS	5-93
MINIMUM PUBLIC SANITARY REQUIREMENTS	5-94
MINIMUM PUBLIC SANITARY REQUIREMENTS	5-95
MINIMUM PUBLIC SANITARY REQUIREMENTS	5-96
MINIMUM PUBLIC SANITARY REQUIREMENTS	5-97
MINIMUM PUBLIC SANITARY REQUIREMENTS	5-98
MINIMUM PUBLIC SANITARY REQUIREMENTS	5-99
MINIMUM PUBLIC SANITARY REQUIREMENTS	5-100

COUNTY OF LOS ANGELES, CALIFORNIA
 STEPHEN J. KOONCE, COUNTY ENGINEER CHARLES W. CARRY, CHIEF ENGINEER
 APPROVED: *John Miller* 2/10/83 APPROVED: *Charles W. Carry* 2/10/83
 SAN DIMAS REGIONAL ENGINEER DATE SAN DIMAS OFFICE DIVISION
 CHECKED: *Ralph Paul Saint* 2/10/83 DATE
 REG. C.E. No. 16783
 SAN DIMAS BLDG. DIST. 10.00



NO L.A. COUNTY CHARGE FOR CONNECTIONS
 DOUBLE SCALE
 SEE SAN DIST. FOR SPECIAL CONNECTION CHARGES

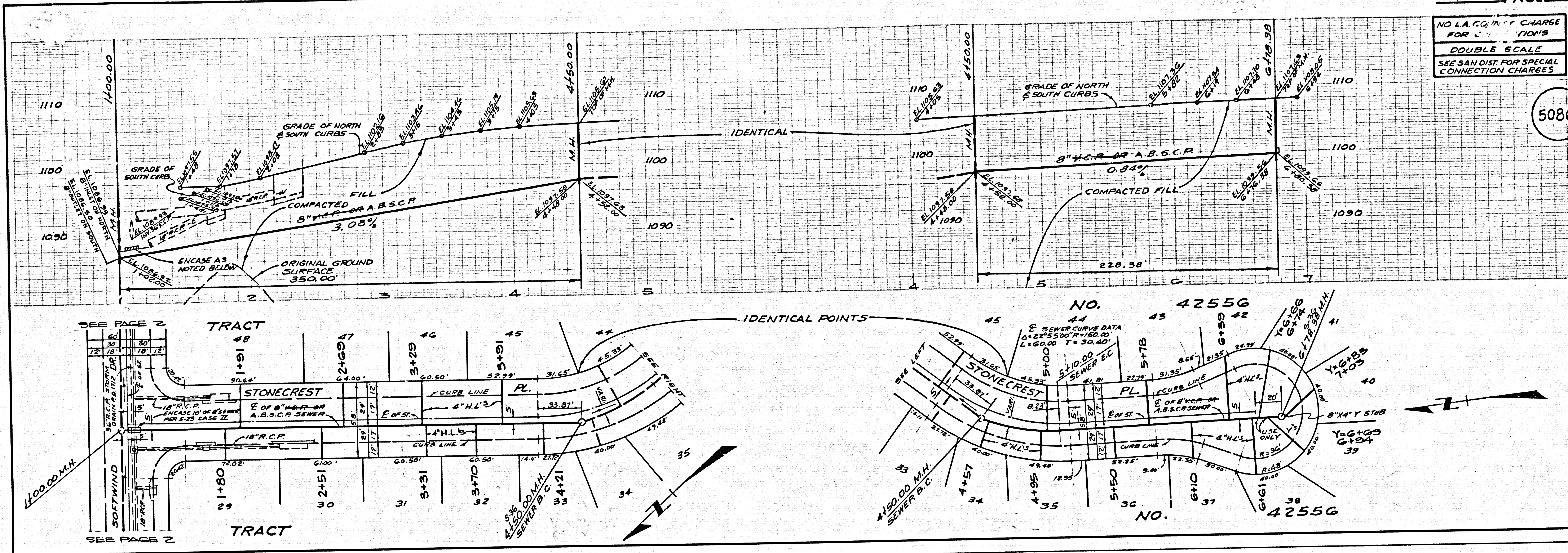
50866

10017

42556

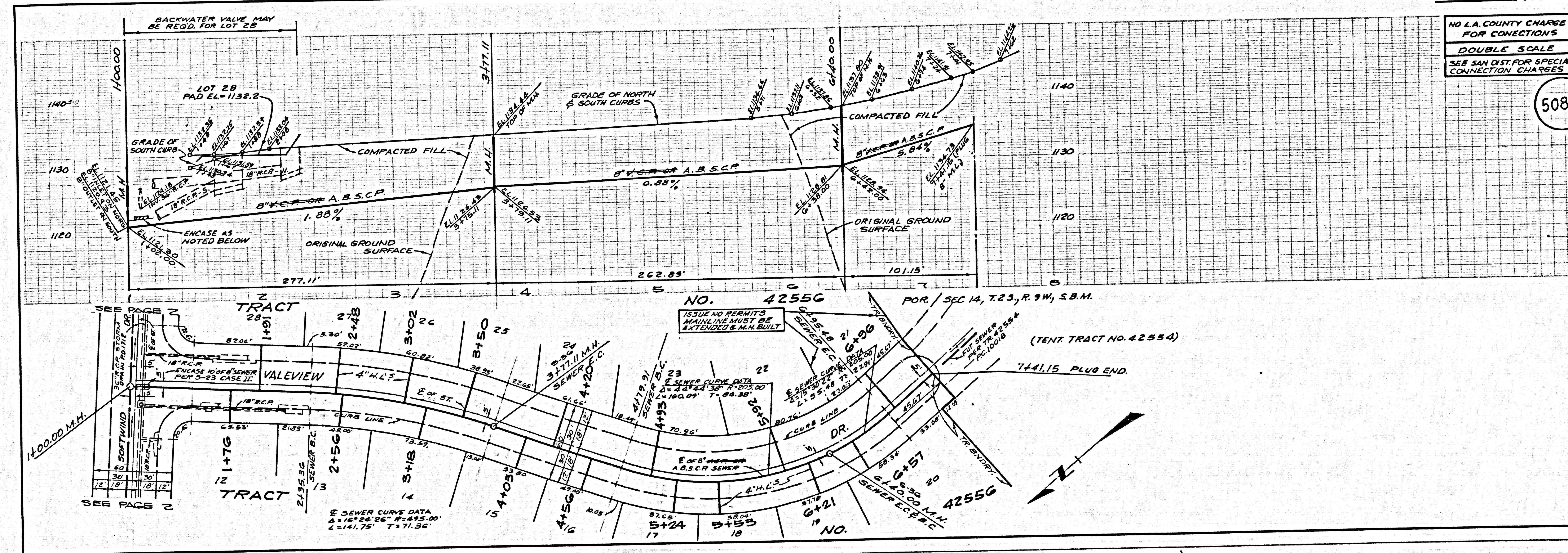
NO L.A. COUNTY CHARGE FOR CONNECTIONS
DOUBLE SCALE
SEE SAN DIST FOR SPECIAL CONNECTION CHARGES

50867



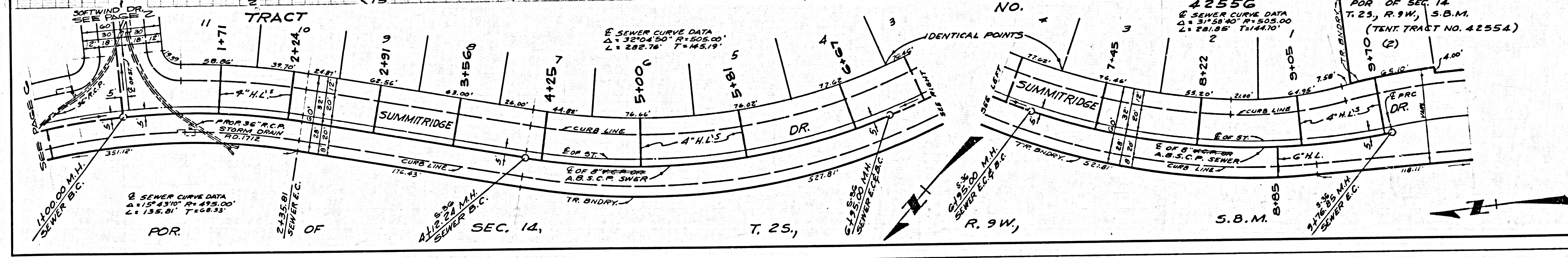
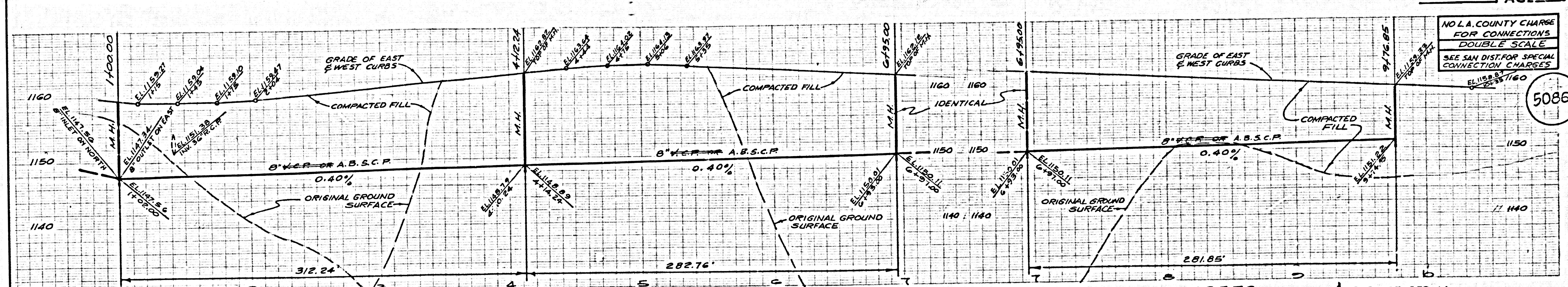
NO L.A. COUNTY CHARGE FOR CONNECTIONS
DOUBLE SCALE
SEE SAN DIST FOR SPECIAL CONNECTION CHARGES

50868



NO L.A. COUNTY CHARGE FOR CONNECTIONS DOUBLE SCALE SEE SAN DIST. FOR SPECIAL CONNECTION CHARGES

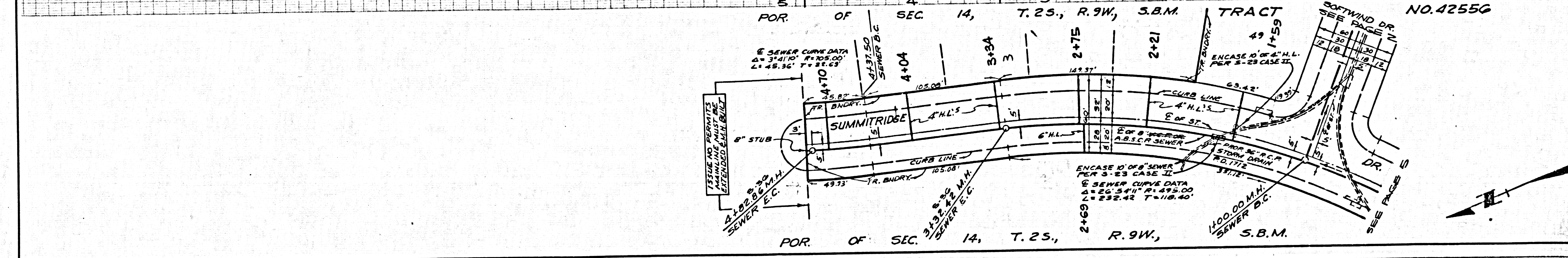
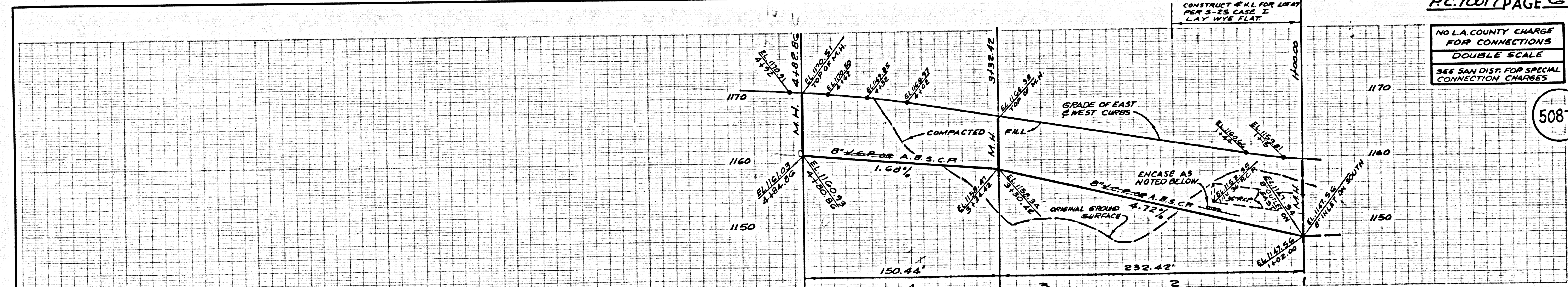
50869



11001.29

NO L.A. COUNTY CHARGE FOR CONNECTIONS DOUBLE SCALE SEE SAN DIST. FOR SPECIAL CONNECTION CHARGES

50870



0255A.00 TRACT