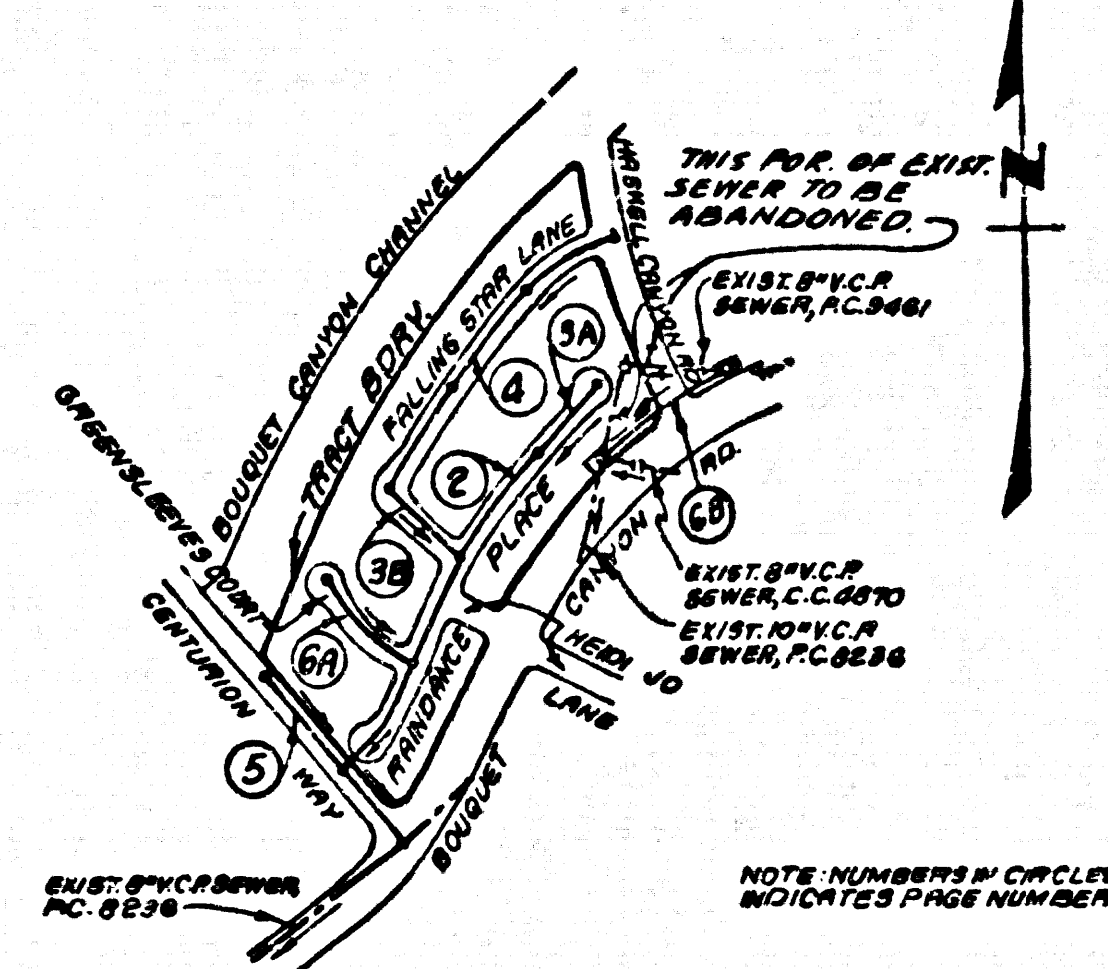


B.M. CL 3825 ELEV. 1296.17
 L.A.'S 5th MAIN NE COR CONC BASE CITY OF
 L.A. WET TOWER 1/8 1/8 160 FT W BOUQUET CYN.
 RD. 601 MI NWLY CL SUSAN BETH WAY MND.
 (B.M. 204-7 1966)
 NEWHALL QUAD. 19 78



INDEX MAP
 TRACT No. 42249
 R.C. 10025
 SCALE: 1"=100'

- CONSTRUCTION NOTES CONT'D.**
16. FULL COMPLIANCE WITH PART II OF THE SPECIAL PROVISIONS IS REQUIRED FOR THE INSTALLATION OF R.S. COMPOSITE PIPE.
 17. MANHOLE WATER STOP GASKETS AND CLAMPS ARE REQUIRED FOR THE CONNECTION OF R.S. COMPOSITE PIPE TO MANHOLE STRUCTURES.
 18. R.S. SOLID WALL PIPE MUST BE USED FOR THE MAIN HOUSE LATERAL CONNECTIONS TO R.S. COMPOSITE MAIN LINE SEWER PIPE.
 19. A R.S. COMPOSITE PIPE SHALL BE USED IN COMPLIANCE WITH THE TABLE IN SECTION 8-31 OF PART II OF THE SPECIAL PROVISIONS.
 20. 3 DEGREE DEFLECTION COLUMNS SHOULD BE USED TO ACCOMMODATE MOVES OF CONNECTIONS LESS THAN 24".
 21. FLOW IS TO BE MAINTAINED AT ALL TIMES ON PG. 60.

BEFORE BREAKING INTO OR CONSTRUCTION ON A COUNTY SANITATION DISTRICT SEWER AND PRIOR TO FINAL ACCEPTANCE OF THE PROJECT, SANITATION DISTRICT INSPECTOR SHALL BE NOTIFIED BY PHONE - 342-8605, SO THAT REQUIRED INSPECTION CAN BE MADE.

LOT 30 IS A L.A. CO. FLOOD CONTROL LOT AND IS NOT SERVED WITH A HOUSE LATERAL.

THE EXISTENCE AND LOCATION OF ANY UNDERGROUND UTILITY PIPES OR STRUCTURES SHOWN ON THESE PLANS ARE OBTAINED BY A SEARCH OF THE AVAILABLE RECORDS TO THE BEST OF OUR KNOWLEDGE THERE ARE NO EXISTING UTILITIES EXCEPT AS SHOWN ON THIS MAP. THE CONTRACTOR IS REQUIRED TO TAKE PRECAUTIONARY MEASURES TO PROTECT THE UTILITY LINES SHOWN AND ANY OTHER LINES NOT OF RECORD OR NOT SHOWN ON THIS DRAWING.

Robert T. Quinn R.C.E. 24988

- GENERAL NOTES:**
1. EXISTENCE AND LOCATION OF ALL UTILITIES TO BE MAINTAINED SHALL BE MAINTAINED AS SHOWN ON THESE PLANS.
 2. NO EXCAVATIONS SHALL BE MADE IN THESE PLANS WITHOUT THE APPROVAL OF THE COUNTY ENGINEER.
 3. NO REPRESENTATIVE OF THE COUNTY ENGINEER WILL SURVEY OR LAY OUT ANY PORTION OF THE WORK.
 4. GRADES TO WHICH THIS IMPROVEMENT IS TO BE CONSTRUCTED ARE SHOWN ON THESE PLANS AND PROFILES. GRADE POINTS FOR TOP OF CURBS, CENTER LINE OF STREETS, OR CENTER LINE OF ALLEYS ARE SHOWN BY CIRCLES ON PROFILES. AT ALL POINTS BETWEEN DESIGNATED POINTS THE GRADE SHALL BE ESTABLISHED TO BE TO CONFORM TO A STRAIGHT LINE DRAWN BETWEEN SAID DESIGNATED POINTS.
 5. THE PRIVATE ENGINEER SHALL FURNISH THE COUNTY ENGINEER WITH GRADE SHEETS AND STATIONING FOR ALL HOUSE LATERALS AND "T" OR "Y" BRANCHES AND SHALL PROVIDE STAKES FOR THEM AT THESE PROPOSED LOCATIONS WITH STATIONING PLAINLY MARKED. ALL HOUSE LATERALS SHALL BE CONSTRUCTED IN A STRAIGHT ALIGNMENT AT 90 DEGREE ANGLES FROM THE MAIN LINE SEWER EXCEPT AS SHOWN ON THE PLANS. HOUSE LATERALS FROM CHIMNEYS SHALL NOT HAVE AN ANGLE OF LESS THAN 45° WITH THE MAIN LINE SEWER. ANY CHANGE IN ALIGNMENT SHALL BE REQUESTED IN WRITING BY THE PRIVATE ENGINEER.
 6. THE PRIVATE ENGINEER SHALL FURNISH THE HOUSE LATERAL DEPTH AT THE PROPERTY LINE BELOW THE TOP OF CURB ELEVATION FOR EACH HOUSE LATERAL ON THE GRADE SHEET.
 7. BEFORE WORK CAN BE STARTED, THE CONTRACTOR MUST OBTAIN A PERMIT TO EXCAVATE IN COUNTY STREETS FROM THE L.A. COUNTY ROAD DEPT. DISTRICT OFFICE NO. 8... AND PAY A FEE TO THE COUNTY ENGINEER, \$50.00 PER FRONT FOOT.
 8. IF WORK IS TO BE DONE IN A STATE HIGHWAY, A PERMIT MUST BE OBTAINED FROM THE STATE OF CALIFORNIA, DIVISION OF HIGHWAYS, 130 SOUTH SPRING STREET, LOS ANGELES, CALIFORNIA.
 9. APPROVAL OF THE PLAN BY THE COUNTY OF LOS ANGELES DOES NOT CONSTITUTE A REPRESENTATION AS TO THE ACCURACY OF THE LOCATION OR THE EXISTENCE OR NON-EXISTENCE OF ANY UNDERGROUND UTILITY PIPE, OR STRUCTURE WITHIN THE LIMITS OF THE PROJECT. THIS NOTE APPLIES TO ALL PAGES.
 10. PRIOR TO BEGINNING OF THE PROPOSED SEWER CONSTRUCTION, THE CONTRACTOR SHALL OBTAIN AND FILE WITH THE COUNTY ENGINEER A PERMIT TO EXCAVATE IN COUNTY STREETS FROM THE LOS ANGELES COUNTY ROAD DEPARTMENT, 130 SOUTH SPRING STREET, LOS ANGELES, CALIFORNIA, FOR THE CONSTRUCTION OF THE SEWER.
 11. ALL STRUCTURES SHALL BE BUILT IN ACCORDANCE WITH THE SPECIAL PROVISIONS OF THE COUNTY ENGINEER, 850 SOUTH VERMONT STREET, LOS ANGELES, CALIFORNIA, 90080 HANDED TO THE CONTRACTOR TO BE NOTIFIED SOONEST TO THE COUNTY ENGINEER.

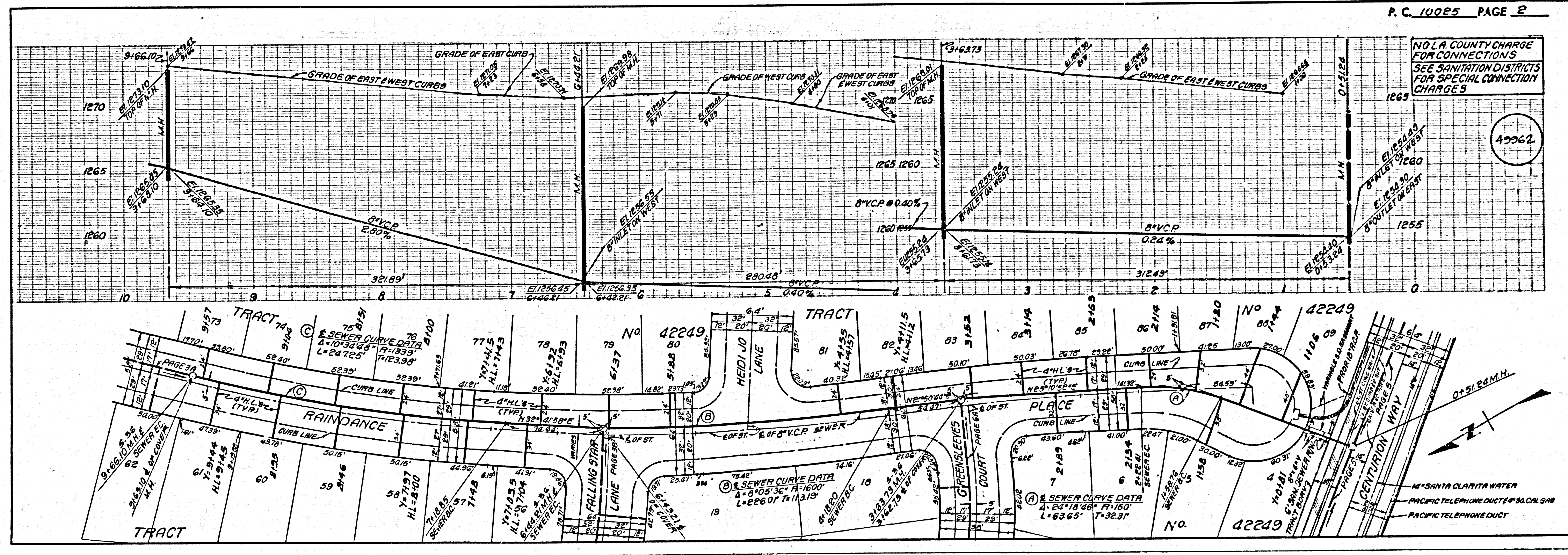
- CONSTRUCTION NOTES:**
1. WORK SHALL BE CONSTRUCTED ACCORDING TO THE STANDARD SPECIFICATIONS FOR PUBLIC WORKS CONSTRUCTION (1981 EDITION) AND SHALL BE PROTECTED ONLY IN THE PRESENCE OF THE COUNTY ENGINEER.
 2. THE CONTRACTOR SHALL NOTIFY THE ENVIRONMENTAL DEVELOPMENT DIVISION BY PHONE 738-8298 AT LEAST TWENTY-FOUR HOURS BEFORE STARTING ANY WORK UNDER THIS CONTRACT.
 3. HOUSE LATERALS TO BE CONSTRUCTED WITH INVERTS AT PROPERTY LINE 6 FEET BELOW CURB GRADE EXCEPT AS NOTED.
 4. "T" OR "Y" BRANCHES MAY BE USED FOR CONNECTIONS TO MAINLINE SEWERS EXCEPT AS NOTED.
 5. ALL STRUCTURES SHALL BE BUILT IN ACCORDANCE WITH THE SPECIAL PROVISIONS OF THE COUNTY ENGINEER, 850 SOUTH VERMONT STREET, LOS ANGELES, CALIFORNIA, 90080 HANDED TO THE CONTRACTOR TO BE NOTIFIED SOONEST TO THE COUNTY ENGINEER.
 6. PROVIDE STAKES ON THE PROPERTY LINE OR PROPERTY LINES PRODUCE AT RIGHT ANGLES TO THE SEWER LINE AT THE CENTER LINE OF EACH MANHOLE.
 7. MANHOLE TOPS IN UNIMPROVED AREAS OF WAY TO BE 18 INCHES ABOVE FINISHED GRADE.
 8. WITHIN CLAY PIPE JOINTS SHALL BE TYPE "W", OR "W" PER STANDARD SPECIFICATIONS SECTION 802.3.
 9. IF A POWER POLE IS WITHIN THREE FEET OF THE SEWER SHALL BE ENCASED PER S.S. CASE 2 TWO FEET ON EACH SIDE FROM THE POINT OF INTERFERENCE.
 10. IF DURING THE COURSE OF CONSTRUCTION IT IS DETERMINED THAT THERE IS LESS THAN FOUR FEET OF COVER OVER THE TOP OF A MAIN LINE OF HOUSE LATERAL V.C.P. SEWER WHICH IS NOT INDICATED ON THESE PLANS, THE PIPE SHALL BE ENCASED PER S.S. CASE 2 UNLESS OTHERWISE APPROVED BY THE COUNTY ENGINEER.
 11. ALL JOINTS BETWEEN CAST IRON PIPE AND WITHIN CLAY PIPE SHALL BE MADE WITH A RUBBER SLEEVE JOINT, TYPE "C" OR "W".
 12. ALL JOINTS BETWEEN CAST IRON PIPE AND WITHIN CLAY PIPE SHALL BE MADE WITH A RUBBER SLEEVE JOINT, TYPE "C" OR "W".
 13. ALL JOINTS BETWEEN CAST IRON PIPE AND WITHIN CLAY PIPE SHALL BE MADE WITH A RUBBER SLEEVE JOINT, TYPE "C" OR "W".
 14. ALL JOINTS BETWEEN CAST IRON PIPE AND WITHIN CLAY PIPE SHALL BE MADE WITH A RUBBER SLEEVE JOINT, TYPE "C" OR "W".
 15. SPECIAL BACKFILL IN EXCAVATIONS CONSTRUCTED FOR SEWER LATERALS SHALL BE 3/4" SAND OR EQUIVALENT TO A MINIMUM OF 18 INCHES ABOVE THE SEWER LATERAL AND SHALL BE COMPACTED TO A MINIMUM OF 95% OF MAXIMUM DENSITY PER A.S.T.M. STD. METHOD OF TEST D. 1557. THE CONTRACTOR SHALL SUBMIT TO THE ENVIRONMENTAL DEVELOPMENT DIVISION.

PROFILE, ALIGNMENT AND GRADE OF
SANITARY SEWERS PAGE 1
 TO BE CONSTRUCTED IN
TRACT No. 42249
PRIVATE CONTRACT NO. 10025
 INDEX 270 5 129 C-A-84
 W.S. 62
 3 SHEETS, 6 PAGES
 SCALE: VERT. 1"=4' HORIZ. 1"=40'
 PREPARED IN THE OFFICES OF
EL. PEARSON AND ASSOCIATES
 1555 W. REDONDO BEACH BLVD., GARDEN, CALIF. 90247
 BY: *Robert T. Quinn*
 REG. C.E. No. 24988

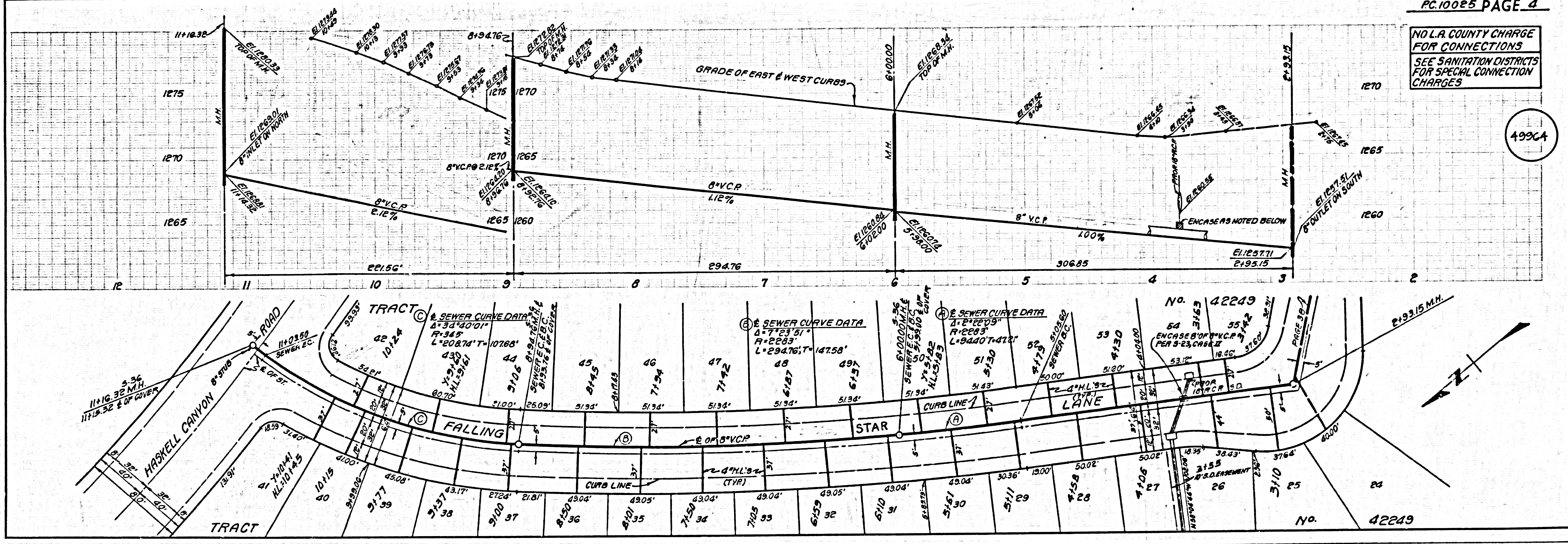
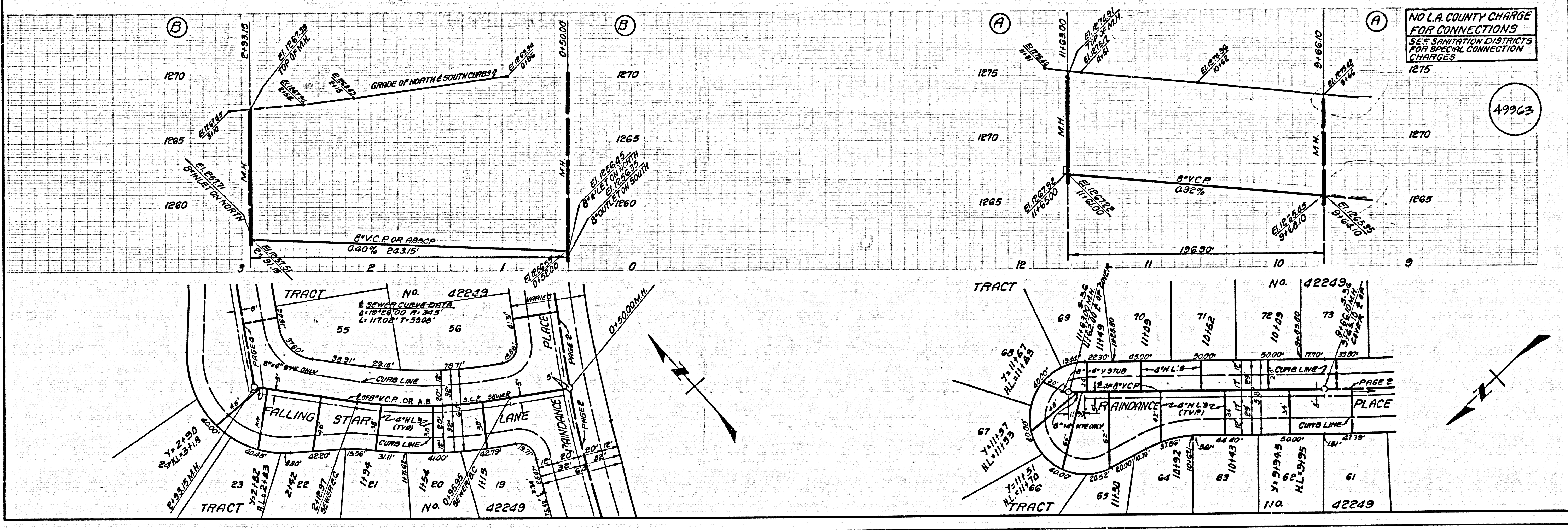
THE FOLLOWING LATEST REVISED STANDARD PLANS ON FILE IN THE OFFICE OF THE COUNTY ENGINEER SHALL APPLY IN THE CONSTRUCTION OF THIS PROJECT:

STANDARD SPECIFICATIONS FOR PUBLIC WORKS CONSTRUCTION (1981 EDITION)	8-1
STANDARD SPECIFICATIONS FOR SEWER PIPE	8-2
STANDARD SPECIFICATIONS FOR SEWER MANHOLES	8-3
STANDARD SPECIFICATIONS FOR SEWER TRENCHES	8-4
STANDARD SPECIFICATIONS FOR SEWER CONNECTIONS	8-5
STANDARD SPECIFICATIONS FOR SEWER LATERALS	8-6
STANDARD SPECIFICATIONS FOR SEWER MANHOLE TOPS	8-7

COUNTY OF LOS ANGELES, CALIFORNIA
 STEPHEN J. KOONCE, COUNTY ENGINEER WALTER E. HARRISON, CHIEF ENGINEER
 APPROVED *Robert T. Quinn* 8-10-82 APPROVED *Walter E. Harrison* 8/11/82
 CHECKED *Ralph Paul* 8/10/82
 REG. C.E. NO. 16583
 SANTA CLARITA BLDG. DIST. 8 E



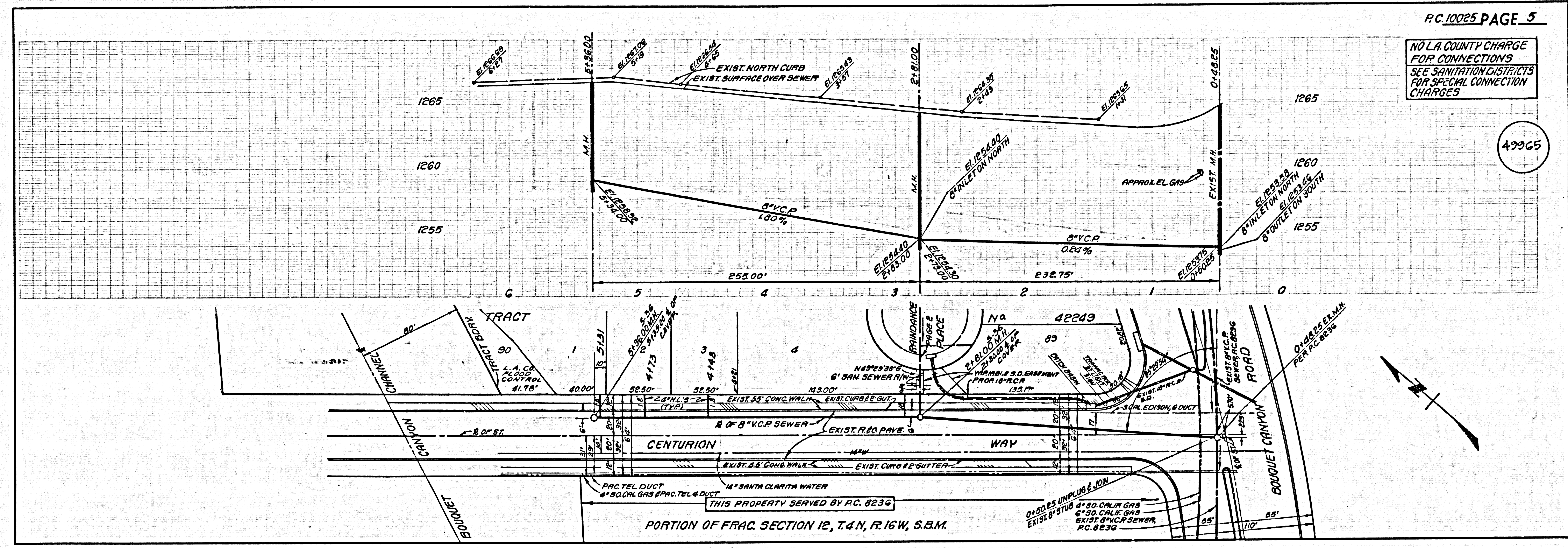
25001 29 88551707A7



250019 6557 010927

NO L.A. COUNTY CHARGE FOR CONNECTIONS SEE SANITATION DISTRICTS FOR SPECIAL CONNECTION CHARGES

49965



PORTION OF TRACT SECTION 12, T.4N, R.16W, S.B.M.

NO L.A. COUNTY CHARGE FOR CONNECTIONS SEE SANITATION DISTRICTS FOR SPECIAL CONNECTION CHARGES

49966

