

SANITARY SEWERS

TO BE CONSTRUCTED IN

PARCEL MAP NO. 14787

PRIVATE CONTRACT NO. 10028

W.S. 38

1 SHEET 2 PAGES

50131

SCALE: 1" = 10' HORIZONTAL, 1" = 2' VERTICAL

OCTOBER, 1981

PREPARED IN THE OFFICES OF

ROGOWAY / BORKOWITZ, ASSOCIATES

4465 WILSHIRE BLVD., LOS ANGELES CALIF. 9000

BY: Jon M. Ziegler, REG. C.E. NO. 18802

THE FOLLOWING LATEST REVISED STANDARD PLANS ON FILE IN THE OFFICE OF THE COUNTY ENGINEER SHALL APPLY IN THE CONSTRUCTION OF THIS PROJECT:

| | |
|--|-------|
| STANDARD PUBLIC SAFETY REQUIREMENTS | 5-1 |
| STANDARD SPECIFICATIONS FOR CONSTRUCTION OF SANITARY SEWERS | 5-2 |
| STANDARD SPECIFICATIONS FOR CONSTRUCTION OF SANITARY SEWER MAINS | 5-3 |
| STANDARD SPECIFICATIONS FOR CONSTRUCTION OF SANITARY SEWER MANHOLES | 5-4 |
| STANDARD SPECIFICATIONS FOR CONSTRUCTION OF SANITARY SEWER TRENCHES | 5-5 |
| STANDARD SPECIFICATIONS FOR CONSTRUCTION OF SANITARY SEWER CONNECTIONS | 5-6 |
| STANDARD SPECIFICATIONS FOR CONSTRUCTION OF SANITARY SEWER EASEMENTS | 5-7 |
| STANDARD SPECIFICATIONS FOR CONSTRUCTION OF SANITARY SEWER EASEMENT ENCLOSURES | 5-8 |
| STANDARD SPECIFICATIONS FOR CONSTRUCTION OF SANITARY SEWER EASEMENT ENCLOSURE WALLS | 5-9 |
| STANDARD SPECIFICATIONS FOR CONSTRUCTION OF SANITARY SEWER EASEMENT ENCLOSURE ROOFS | 5-10 |
| STANDARD SPECIFICATIONS FOR CONSTRUCTION OF SANITARY SEWER EASEMENT ENCLOSURE FLOORS | 5-11 |
| STANDARD SPECIFICATIONS FOR CONSTRUCTION OF SANITARY SEWER EASEMENT ENCLOSURE DOORS | 5-12 |
| STANDARD SPECIFICATIONS FOR CONSTRUCTION OF SANITARY SEWER EASEMENT ENCLOSURE WINDOWS | 5-13 |
| STANDARD SPECIFICATIONS FOR CONSTRUCTION OF SANITARY SEWER EASEMENT ENCLOSURE VENTILATION | 5-14 |
| STANDARD SPECIFICATIONS FOR CONSTRUCTION OF SANITARY SEWER EASEMENT ENCLOSURE LIGHTING | 5-15 |
| STANDARD SPECIFICATIONS FOR CONSTRUCTION OF SANITARY SEWER EASEMENT ENCLOSURE PAINT | 5-16 |
| STANDARD SPECIFICATIONS FOR CONSTRUCTION OF SANITARY SEWER EASEMENT ENCLOSURE SIGNAGE | 5-17 |
| STANDARD SPECIFICATIONS FOR CONSTRUCTION OF SANITARY SEWER EASEMENT ENCLOSURE SECURITY | 5-18 |
| STANDARD SPECIFICATIONS FOR CONSTRUCTION OF SANITARY SEWER EASEMENT ENCLOSURE MAINTENANCE | 5-19 |
| STANDARD SPECIFICATIONS FOR CONSTRUCTION OF SANITARY SEWER EASEMENT ENCLOSURE INSULATION | 5-20 |
| STANDARD SPECIFICATIONS FOR CONSTRUCTION OF SANITARY SEWER EASEMENT ENCLOSURE SOUND | 5-21 |
| STANDARD SPECIFICATIONS FOR CONSTRUCTION OF SANITARY SEWER EASEMENT ENCLOSURE VIBRATION | 5-22 |
| STANDARD SPECIFICATIONS FOR CONSTRUCTION OF SANITARY SEWER EASEMENT ENCLOSURE AIR QUALITY | 5-23 |
| STANDARD SPECIFICATIONS FOR CONSTRUCTION OF SANITARY SEWER EASEMENT ENCLOSURE TEMPERATURE | 5-24 |
| STANDARD SPECIFICATIONS FOR CONSTRUCTION OF SANITARY SEWER EASEMENT ENCLOSURE HUMIDITY | 5-25 |
| STANDARD SPECIFICATIONS FOR CONSTRUCTION OF SANITARY SEWER EASEMENT ENCLOSURE PARTICULATE | 5-26 |
| STANDARD SPECIFICATIONS FOR CONSTRUCTION OF SANITARY SEWER EASEMENT ENCLOSURE OZONE | 5-27 |
| STANDARD SPECIFICATIONS FOR CONSTRUCTION OF SANITARY SEWER EASEMENT ENCLOSURE NOX | 5-28 |
| STANDARD SPECIFICATIONS FOR CONSTRUCTION OF SANITARY SEWER EASEMENT ENCLOSURE SO2 | 5-29 |
| STANDARD SPECIFICATIONS FOR CONSTRUCTION OF SANITARY SEWER EASEMENT ENCLOSURE CO | 5-30 |
| STANDARD SPECIFICATIONS FOR CONSTRUCTION OF SANITARY SEWER EASEMENT ENCLOSURE O2 | 5-31 |
| STANDARD SPECIFICATIONS FOR CONSTRUCTION OF SANITARY SEWER EASEMENT ENCLOSURE PH | 5-32 |
| STANDARD SPECIFICATIONS FOR CONSTRUCTION OF SANITARY SEWER EASEMENT ENCLOSURE TOXIC GASES | 5-33 |
| STANDARD SPECIFICATIONS FOR CONSTRUCTION OF SANITARY SEWER EASEMENT ENCLOSURE RADON | 5-34 |
| STANDARD SPECIFICATIONS FOR CONSTRUCTION OF SANITARY SEWER EASEMENT ENCLOSURE ASBESTOS | 5-35 |
| STANDARD SPECIFICATIONS FOR CONSTRUCTION OF SANITARY SEWER EASEMENT ENCLOSURE LEAD | 5-36 |
| STANDARD SPECIFICATIONS FOR CONSTRUCTION OF SANITARY SEWER EASEMENT ENCLOSURE MERCURY | 5-37 |
| STANDARD SPECIFICATIONS FOR CONSTRUCTION OF SANITARY SEWER EASEMENT ENCLOSURE CHLORINE | 5-38 |
| STANDARD SPECIFICATIONS FOR CONSTRUCTION OF SANITARY SEWER EASEMENT ENCLOSURE FLUORIDE | 5-39 |
| STANDARD SPECIFICATIONS FOR CONSTRUCTION OF SANITARY SEWER EASEMENT ENCLOSURE SILICA | 5-40 |
| STANDARD SPECIFICATIONS FOR CONSTRUCTION OF SANITARY SEWER EASEMENT ENCLOSURE CARBON MONOXIDE | 5-41 |
| STANDARD SPECIFICATIONS FOR CONSTRUCTION OF SANITARY SEWER EASEMENT ENCLOSURE ETHYLENE GLYCOL | 5-42 |
| STANDARD SPECIFICATIONS FOR CONSTRUCTION OF SANITARY SEWER EASEMENT ENCLOSURE ETHANOL | 5-43 |
| STANDARD SPECIFICATIONS FOR CONSTRUCTION OF SANITARY SEWER EASEMENT ENCLOSURE ACETONE | 5-44 |
| STANDARD SPECIFICATIONS FOR CONSTRUCTION OF SANITARY SEWER EASEMENT ENCLOSURE BENZENE | 5-45 |
| STANDARD SPECIFICATIONS FOR CONSTRUCTION OF SANITARY SEWER EASEMENT ENCLOSURE TOLUENE | 5-46 |
| STANDARD SPECIFICATIONS FOR CONSTRUCTION OF SANITARY SEWER EASEMENT ENCLOSURE XYLENE | 5-47 |
| STANDARD SPECIFICATIONS FOR CONSTRUCTION OF SANITARY SEWER EASEMENT ENCLOSURE STYRENE | 5-48 |
| STANDARD SPECIFICATIONS FOR CONSTRUCTION OF SANITARY SEWER EASEMENT ENCLOSURE VINYL CHLORIDE | 5-49 |
| STANDARD SPECIFICATIONS FOR CONSTRUCTION OF SANITARY SEWER EASEMENT ENCLOSURE ACRYLONITRILE | 5-50 |
| STANDARD SPECIFICATIONS FOR CONSTRUCTION OF SANITARY SEWER EASEMENT ENCLOSURE METHACRYLONITRILE | 5-51 |
| STANDARD SPECIFICATIONS FOR CONSTRUCTION OF SANITARY SEWER EASEMENT ENCLOSURE METHYL METHACRYLATE | 5-52 |
| STANDARD SPECIFICATIONS FOR CONSTRUCTION OF SANITARY SEWER EASEMENT ENCLOSURE DIMETHYL METHACRYLATE | 5-53 |
| STANDARD SPECIFICATIONS FOR CONSTRUCTION OF SANITARY SEWER EASEMENT ENCLOSURE ETHYL METHACRYLATE | 5-54 |
| STANDARD SPECIFICATIONS FOR CONSTRUCTION OF SANITARY SEWER EASEMENT ENCLOSURE BUTYL METHACRYLATE | 5-55 |
| STANDARD SPECIFICATIONS FOR CONSTRUCTION OF SANITARY SEWER EASEMENT ENCLOSURE ISOBUTYL METHACRYLATE | 5-56 |
| STANDARD SPECIFICATIONS FOR CONSTRUCTION OF SANITARY SEWER EASEMENT ENCLOSURE TERT-BUTYL METHACRYLATE | 5-57 |
| STANDARD SPECIFICATIONS FOR CONSTRUCTION OF SANITARY SEWER EASEMENT ENCLOSURE VINYL ACETATE | 5-58 |
| STANDARD SPECIFICATIONS FOR CONSTRUCTION OF SANITARY SEWER EASEMENT ENCLOSURE ETHYL ACRYLATE | 5-59 |
| STANDARD SPECIFICATIONS FOR CONSTRUCTION OF SANITARY SEWER EASEMENT ENCLOSURE BUTYL ACRYLATE | 5-60 |
| STANDARD SPECIFICATIONS FOR CONSTRUCTION OF SANITARY SEWER EASEMENT ENCLOSURE ISOBUTYL ACRYLATE | 5-61 |
| STANDARD SPECIFICATIONS FOR CONSTRUCTION OF SANITARY SEWER EASEMENT ENCLOSURE TERT-BUTYL ACRYLATE | 5-62 |
| STANDARD SPECIFICATIONS FOR CONSTRUCTION OF SANITARY SEWER EASEMENT ENCLOSURE METHACRYLAMIDE | 5-63 |
| STANDARD SPECIFICATIONS FOR CONSTRUCTION OF SANITARY SEWER EASEMENT ENCLOSURE METHYL METHACRYLAMIDE | 5-64 |
| STANDARD SPECIFICATIONS FOR CONSTRUCTION OF SANITARY SEWER EASEMENT ENCLOSURE DIMETHYL METHACRYLAMIDE | 5-65 |
| STANDARD SPECIFICATIONS FOR CONSTRUCTION OF SANITARY SEWER EASEMENT ENCLOSURE ETHYL METHACRYLAMIDE | 5-66 |
| STANDARD SPECIFICATIONS FOR CONSTRUCTION OF SANITARY SEWER EASEMENT ENCLOSURE BUTYL METHACRYLAMIDE | 5-67 |
| STANDARD SPECIFICATIONS FOR CONSTRUCTION OF SANITARY SEWER EASEMENT ENCLOSURE ISOBUTYL METHACRYLAMIDE | 5-68 |
| STANDARD SPECIFICATIONS FOR CONSTRUCTION OF SANITARY SEWER EASEMENT ENCLOSURE TERT-BUTYL METHACRYLAMIDE | 5-69 |
| STANDARD SPECIFICATIONS FOR CONSTRUCTION OF SANITARY SEWER EASEMENT ENCLOSURE VINYL CARBAZOLE | 5-70 |
| STANDARD SPECIFICATIONS FOR CONSTRUCTION OF SANITARY SEWER EASEMENT ENCLOSURE ETHYL VINYL CARBAZOLE | 5-71 |
| STANDARD SPECIFICATIONS FOR CONSTRUCTION OF SANITARY SEWER EASEMENT ENCLOSURE BUTYL VINYL CARBAZOLE | 5-72 |
| STANDARD SPECIFICATIONS FOR CONSTRUCTION OF SANITARY SEWER EASEMENT ENCLOSURE ISOBUTYL VINYL CARBAZOLE | 5-73 |
| STANDARD SPECIFICATIONS FOR CONSTRUCTION OF SANITARY SEWER EASEMENT ENCLOSURE TERT-BUTYL VINYL CARBAZOLE | 5-74 |
| STANDARD SPECIFICATIONS FOR CONSTRUCTION OF SANITARY SEWER EASEMENT ENCLOSURE VINYL PYRROLIDONE | 5-75 |
| STANDARD SPECIFICATIONS FOR CONSTRUCTION OF SANITARY SEWER EASEMENT ENCLOSURE ETHYL VINYL PYRROLIDONE | 5-76 |
| STANDARD SPECIFICATIONS FOR CONSTRUCTION OF SANITARY SEWER EASEMENT ENCLOSURE BUTYL VINYL PYRROLIDONE | 5-77 |
| STANDARD SPECIFICATIONS FOR CONSTRUCTION OF SANITARY SEWER EASEMENT ENCLOSURE ISOBUTYL VINYL PYRROLIDONE | 5-78 |
| STANDARD SPECIFICATIONS FOR CONSTRUCTION OF SANITARY SEWER EASEMENT ENCLOSURE TERT-BUTYL VINYL PYRROLIDONE | 5-79 |
| STANDARD SPECIFICATIONS FOR CONSTRUCTION OF SANITARY SEWER EASEMENT ENCLOSURE VINYL PIPERIDINE | 5-80 |
| STANDARD SPECIFICATIONS FOR CONSTRUCTION OF SANITARY SEWER EASEMENT ENCLOSURE ETHYL VINYL PIPERIDINE | 5-81 |
| STANDARD SPECIFICATIONS FOR CONSTRUCTION OF SANITARY SEWER EASEMENT ENCLOSURE BUTYL VINYL PIPERIDINE | 5-82 |
| STANDARD SPECIFICATIONS FOR CONSTRUCTION OF SANITARY SEWER EASEMENT ENCLOSURE ISOBUTYL VINYL PIPERIDINE | 5-83 |
| STANDARD SPECIFICATIONS FOR CONSTRUCTION OF SANITARY SEWER EASEMENT ENCLOSURE TERT-BUTYL VINYL PIPERIDINE | 5-84 |
| STANDARD SPECIFICATIONS FOR CONSTRUCTION OF SANITARY SEWER EASEMENT ENCLOSURE VINYL PIPERAZINE | 5-85 |
| STANDARD SPECIFICATIONS FOR CONSTRUCTION OF SANITARY SEWER EASEMENT ENCLOSURE ETHYL VINYL PIPERAZINE | 5-86 |
| STANDARD SPECIFICATIONS FOR CONSTRUCTION OF SANITARY SEWER EASEMENT ENCLOSURE BUTYL VINYL PIPERAZINE | 5-87 |
| STANDARD SPECIFICATIONS FOR CONSTRUCTION OF SANITARY SEWER EASEMENT ENCLOSURE ISOBUTYL VINYL PIPERAZINE | 5-88 |
| STANDARD SPECIFICATIONS FOR CONSTRUCTION OF SANITARY SEWER EASEMENT ENCLOSURE TERT-BUTYL VINYL PIPERAZINE | 5-89 |
| STANDARD SPECIFICATIONS FOR CONSTRUCTION OF SANITARY SEWER EASEMENT ENCLOSURE VINYL IMIDAZOLE | 5-90 |
| STANDARD SPECIFICATIONS FOR CONSTRUCTION OF SANITARY SEWER EASEMENT ENCLOSURE ETHYL VINYL IMIDAZOLE | 5-91 |
| STANDARD SPECIFICATIONS FOR CONSTRUCTION OF SANITARY SEWER EASEMENT ENCLOSURE BUTYL VINYL IMIDAZOLE | 5-92 |
| STANDARD SPECIFICATIONS FOR CONSTRUCTION OF SANITARY SEWER EASEMENT ENCLOSURE ISOBUTYL VINYL IMIDAZOLE | 5-93 |
| STANDARD SPECIFICATIONS FOR CONSTRUCTION OF SANITARY SEWER EASEMENT ENCLOSURE TERT-BUTYL VINYL IMIDAZOLE | 5-94 |
| STANDARD SPECIFICATIONS FOR CONSTRUCTION OF SANITARY SEWER EASEMENT ENCLOSURE VINYL PYRIDINE | 5-95 |
| STANDARD SPECIFICATIONS FOR CONSTRUCTION OF SANITARY SEWER EASEMENT ENCLOSURE ETHYL VINYL PYRIDINE | 5-96 |
| STANDARD SPECIFICATIONS FOR CONSTRUCTION OF SANITARY SEWER EASEMENT ENCLOSURE BUTYL VINYL PYRIDINE | 5-97 |
| STANDARD SPECIFICATIONS FOR CONSTRUCTION OF SANITARY SEWER EASEMENT ENCLOSURE ISOBUTYL VINYL PYRIDINE | 5-98 |
| STANDARD SPECIFICATIONS FOR CONSTRUCTION OF SANITARY SEWER EASEMENT ENCLOSURE TERT-BUTYL VINYL PYRIDINE | 5-99 |
| STANDARD SPECIFICATIONS FOR CONSTRUCTION OF SANITARY SEWER EASEMENT ENCLOSURE VINYL TRIPYRIDINE | 5-100 |

COUNTY OF LOS ANGELES, CALIFORNIA
 STEPHEN J. KOONCE, COUNTY ENGINEER
 WALTER E. GARRISON, CHIEF ENGINEER
 APPROVED: *John L. Mungy* 3-20-81
 CHECKED: *Ralph D. Davis* 3/20/81
 LA PUENTE BLDG. DIST. 2.00

CITY OF INDUSTRY, CALIF.
 JOHN J. RADECKI, JR., CITY ENGINEER
 APPROVED: *John J. Radecki*
 J.N. 3/19/82

DOUBLE SCALE:

REVISION NO. 1 DATE 6-28-83

REVISED MAIN LINE ALIGNMENT FROM STATION 3+70 TO STATION 10+49.39 AND SERVICE LOCATIONS FROM STATION 1+90 TO STATION 10+49.39, PAGE 2.

APPROVED: *Sanjay G. Ibell* R.C. 5-33134 OFFICE OF COUNTY ENGINEER

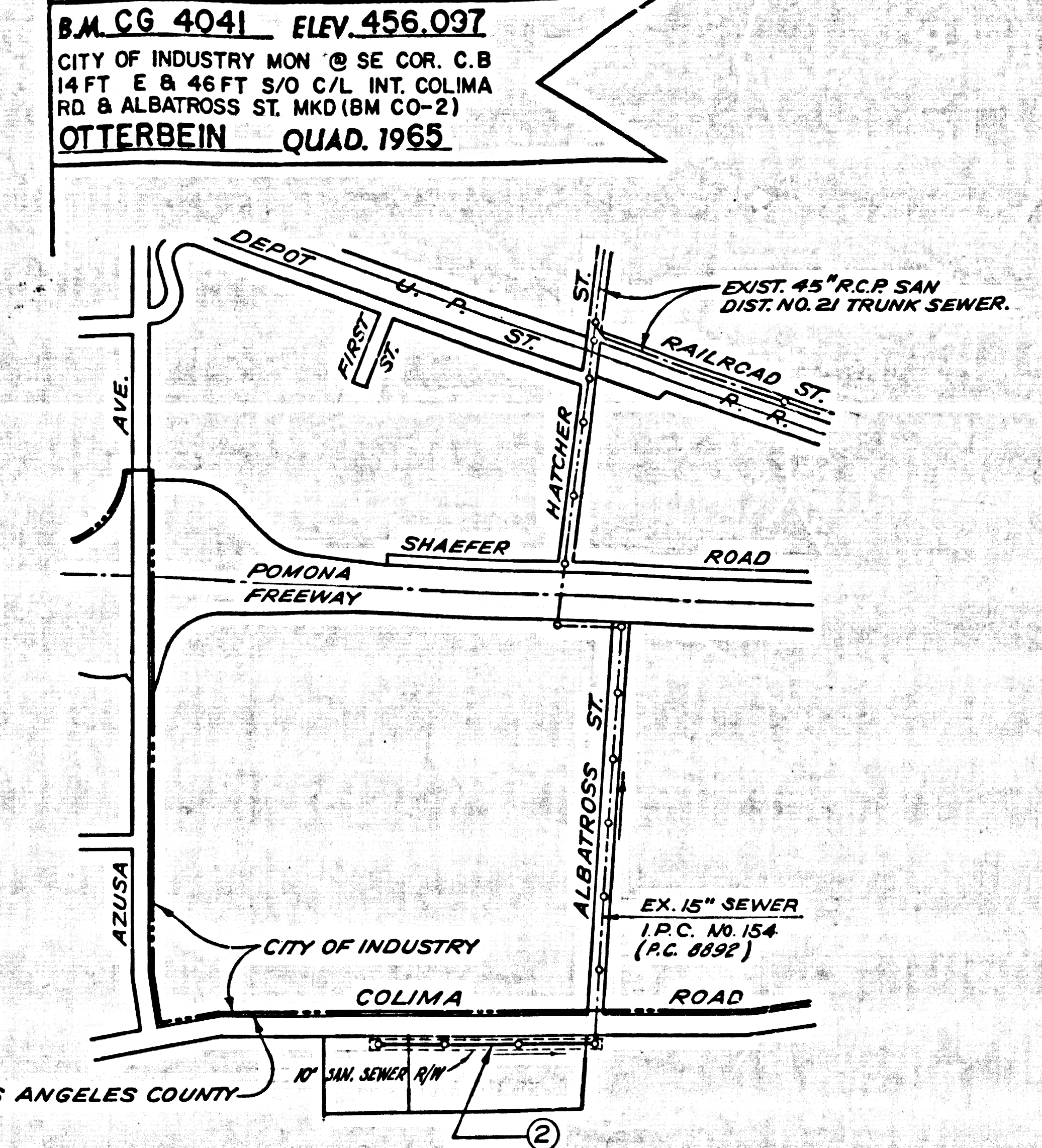
REVISION NO. 2 DATE 1-7-83

ADDED MANHOLE AT STATION 0+02 AND CHANGED PIPE SIZE FROM 16" C.I.P. TO 8" C.I.P. FROM STATION 0+04 TO STATION 0+18, PAGE 2.

APPROVED: *Sanjay G. Ibell* R.C. 5-33134

NOTE: NO CONNECTION FOR THE DISPOSAL OF INDUSTRIAL WASTES SHALL BE MADE TO SEWERS SHOWN ON THESE DRAWINGS UNTIL A PERMIT FOR INDUSTRIAL WASTEWATER DISCHARGE HAS BEEN ISSUED BY THE SANITATION DISTRICTS FOR SAID CONNECTION.

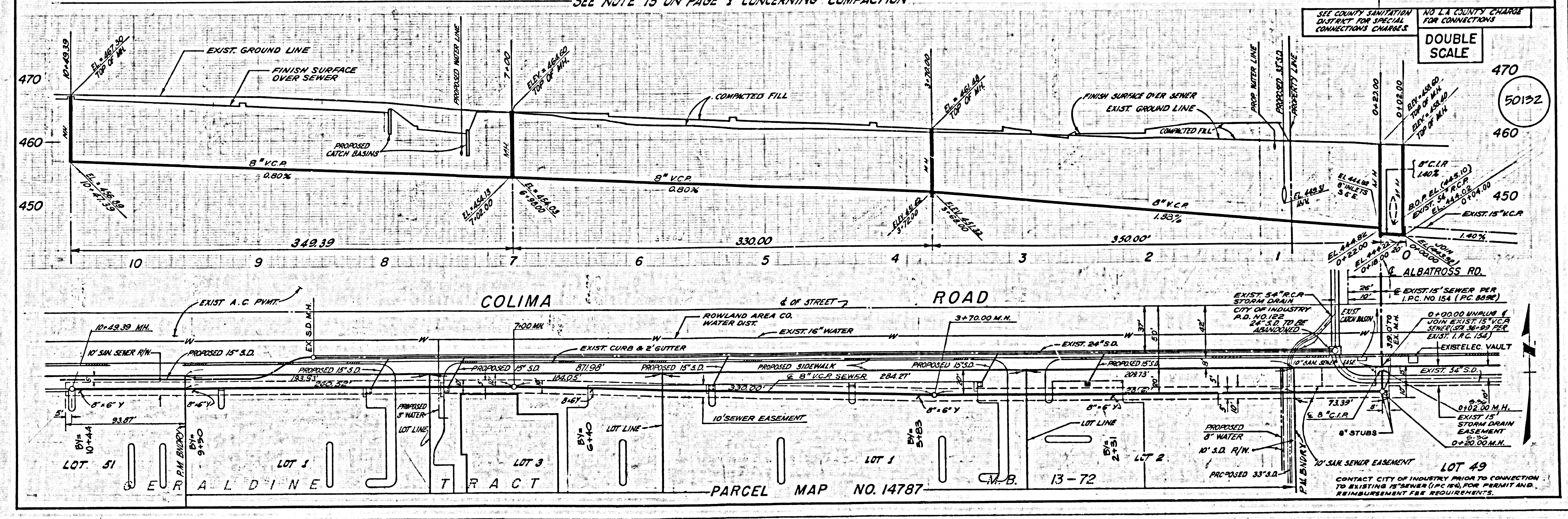
BEFORE BREAKING INTO OR CONSTRUCTION ON A COUNTY SANITATION DISTRICT SEWER AND PRIOR TO FINAL ACCEPTANCE OF THE PROJECT, SANITATION DISTRICTS INSPECTORS SHALL BE NOTIFIED BY PHONE 442-8403, 634-1454, SO THAT REQUIRED INSPECTION CAN BE MADE.



INDEX MAP
 SCALE: 1" = 600'
 P.C. 10028
 P.M. 14787

NOTE: NUMBER IN CIRCLE INDICATES PAGE NO.

SEE NOTE 15 ON PAGE 1 CONCERNING COMPACTION



DOUBLE SCALE

50132

SEE COUNTY SANITATION DISTRICT FOR SPECIAL CONNECTIONS CHARGES

NO L.A. COUNTY CHARGE FOR CONNECTIONS

SEE COUNTY SANITATION DISTRICT FOR SPECIAL CONNECTIONS CHARGES

NO L.A. COUNTY CHARGE FOR CONNECTIONS

SEE COUNTY SANITATION DISTRICT FOR SPECIAL CONNECTIONS CHARGES

NO L.A. COUNTY CHARGE FOR CONNECTIONS

SEE COUNTY SANITATION DISTRICT FOR SPECIAL CONNECTIONS CHARGES

NO L.A. COUNTY CHARGE FOR CONNECTIONS

SEE COUNTY SANITATION DISTRICT FOR SPECIAL CONNECTIONS CHARGES

NO L.A. COUNTY CHARGE FOR CONNECTIONS

SEE COUNTY SANITATION DISTRICT FOR SPECIAL CONNECTIONS CHARGES

NO L.A. COUNTY CHARGE FOR CONNECTIONS

SEE COUNTY SANITATION DISTRICT FOR SPECIAL CONNECTIONS CHARGES

NO L.A. COUNTY CHARGE FOR CONNECTIONS

SEE COUNTY SANITATION DISTRICT FOR SPECIAL CONNECTIONS CHARGES

NO L.A. COUNTY CHARGE FOR CONNECTIONS

SEE COUNTY SANITATION DISTRICT FOR SPECIAL CONNECTIONS CHARGES

NO L.A. COUNTY CHARGE FOR CONNECTIONS

8500154 BC 10058 18741 W-9