

B.M. CL 3019 ELEV. 1314.729
 L.A.C. MON IN W. CB OF E. SERVICE RD. OF
 SECO CYN RD 14 FT W. Q/L & 54 FT S/O END
 CB IN FRONT OF HSE # 27656 0.1 MI. N. CALVELLO
 NEWMALL QUAD. 1978 DR.

DOUBLE VERTICAL SCALE

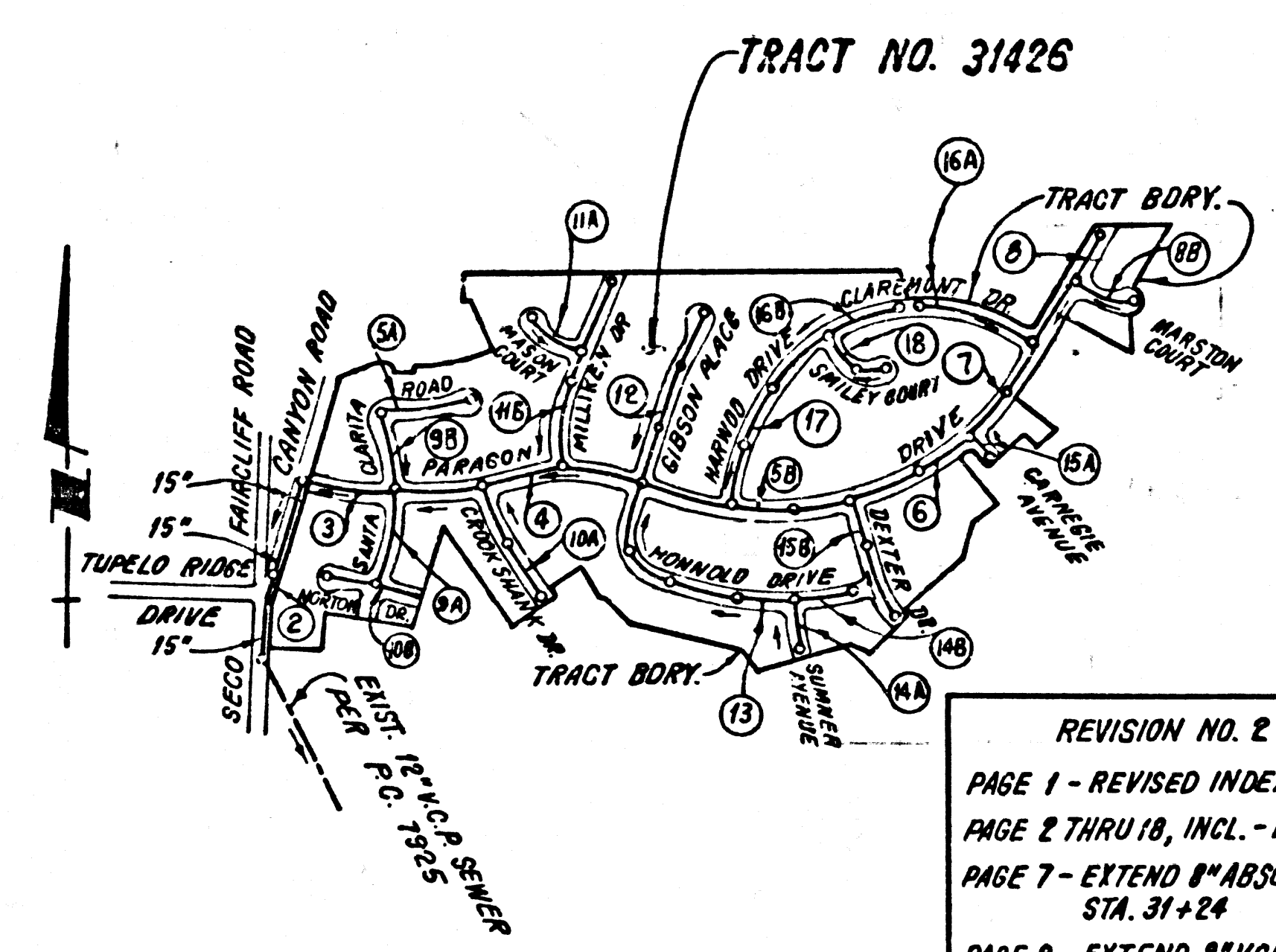
CONSTRUCTION NOTES (CONT'D)
 16. FULL COMPLIANCE WITH PART IV OF THE SPECIAL PROVISIONS IS REQUIRED FOR THE INSTALLATION OF A.B.S. COMPOSITE PIPE.
 17. MANHOLE WATER STOP GASKETS AND CLAMPS ARE REQUIRED FOR THE CONNECTION OF A.B.S. COMPOSITE PIPE TO MANHOLE STRUCTURES.
 18. A.B.S. SOLID WALL PIPE MUST BE USED FOR WYE AND HOUSE LATERAL CONNECTIONS TO A.B.S. COMPOSITE MAINLINE SEWER PIPE.
 19. A.B.S. COMPOSITE PIPE SHALL BE BEDDED IN CONFORMANCE WITH THE TABLE IN SECTION 8-3.1 OF PART IV OF THE SPECIAL PROVISIONS.
 20. 3 DEGREE DEFLECTION COUPLERS SHALL BE USED TO ACCOMPLISH RADII OF CURVATURE LESS THAN 300'.

CONSTRUCTION NOTES CONT'D

4A. WYE BRANCHES ONLY MAY BE USED FOR CONNECTIONS TO MAINLINE SEWER IF A.B.S.C.P. IS USED.
 11A. ALL JOINTS BETWEEN CAST IRON PIPE & A.B.S.C.P. SHALL BE MADE WITH APPROVED FITTINGS.

NO CONNECTION FOR THE DISPOSAL OF INDUSTRIAL WASTES SHALL BE MADE TO SEWERS SHOWN ON THESE DRAWINGS UNTIL A PERMIT FOR INDUSTRIAL WASTEWATER DISCHARGE HAS BEEN ISSUED BY THE SANITATION DISTRICTS FOR SAID CONNECTION.
 BEFORE BREAKING INTO OR CONSTRUCTION ON A COUNTY SANITATION DISTRICT SEWER MAIN PRIOR TO FINAL ACCEPTANCE OF THE PROJECT, SANITATION DISTRICT INSPECTOR SHALL BE NOTIFIED BY PHONE - 962-8605, 638-1161 SO THAT REQUIRED INSPECTION CAN BE MADE.

REVISION NO. 1 DATE 7/19/83
 PAGE 2. REVISED ALIGNMENT FOR STA 4+00 TO EXISTING M.H. # 173 PROFILE, ADDED ANGLE FOR STUB @ STA. 7+12.02
 APPROVED BY: Ralph David Siret 7/19/83



NOTE: NUMBERS IN CIRCLES INDICATE PAGE NUMBERS

INDEX MAP
 SCALE: 1"=600'
 TRACT NO. 31426
 R.C. NO. 10037

REVISION NO. 2 DATE 12/11/83
 PAGE 1 - REVISED INDEX MAP
 PAGE 2 THROUGH 10 - REVISED ALL LOT NUMBERS
 PAGE 7 - EXTEND 15" A.B.S.C.P. MAINLINE TO STA. 3+12.02
 PAGE 8 - EXTEND 15" V.C.P. MAINLINE TO STA. 7+17.31
 PAGE 10A - DELETE H.C.'S AT STA. 1+54
 PAGE 15B - DELETE H.C.'S AT STA. 2+00 AND STA. 2+08
 APPROVED BY: Ralph David Siret

GENERAL NOTES:

- ELEVATIONS ARE IN FEET ABOVE U.S. & G.S. SEA LEVEL DATUM OF 1929.
- NO REVISIONS SHALL BE MADE IN THESE PLANS WITHOUT THE APPROVAL OF THE COUNTY ENGINEER.
- NO REPRESENTATIVE OF THE COUNTY ENGINEER WILL BE ON CALL AT ANY PORTION OF THE WORK.
- GRADES TO WHICH THIS IMPROVEMENT IS TO BE CONSTRUCTED ARE SHOWN ON PLANS AND PROFILES. GRADE POINTS FOR TOP OF CURBS, CENTER LINE OF STREETS, OR CENTER LINE OF ALLEYS ARE SHOWN BY CIRCLES ON PROFILES. AT ALL POINTS BETWEEN DESIGNATED POINTS THE GRADE SHALL BE ESTABLISHED SO AS TO CONFORM TO A STRAIGHT LINE DRAWN BETWEEN SAID DESIGNATED POINTS.
- THE PRIVATE ENGINEER SHALL FURNISH THE COUNTY ENGINEER WITH GRADE SHEETS AND STATIONING FOR ALL HOUSE LATERALS AND "T" OR "Y" BRANCHES AND SHALL PROVIDE STAKES FOR THEM AT THEIR PROPER LOCATIONS WITH STATIONING PLAINLY MARKED. ALL HOUSE LATERALS SHALL BE CONSTRUCTED IN A STRAIGHT ALIGNMENT AT RIGHT ANGLES FROM THE MAIN LINE SEWER EXCEPT AS SHOWN ON THE PLANS. HOUSE LATERALS FROM CHIMNEYS SHALL NOT HAVE AN ANGLE OF LESS THAN 45° WITH THE MAIN LINE SEWER. ANY CHANGE IN ALIGNMENT SHALL BE REQUESTED BY WRITING BY THE PRIVATE ENGINEER.
- THE PRIVATE ENGINEER SHALL FURNISH THE HOUSE LATERAL DEPTH AT THE PROPERTY LINE BELOW THE TOP OF CURB ELEVATION FOR EACH HOUSE LATERAL ON THE GRADE SHEET.
- BEFORE WORK CAN BE STARTED, THE CONTRACTOR MUST OBTAIN A PERMIT TO EXCAVATE IN COUNTY STREETS FROM THE L.A. COUNTY ROAD DEPT., DISTRICT OFFICE NO. 6, AND PAY A FEE TO THE COUNTY ENGINEER, REGIONAL OFFICE, TO COVER THE COST OF CONSTRUCTION INSPECTION AND RECORD PLANS.
- IF WORK IS TO BE DONE IN A STATE HIGHWAY, A PERMIT MUST BE OBTAINED FROM THE STATE OF CALIFORNIA, DIVISION OF HIGHWAYS, 120 SOUTH SPRING STREET, LOS ANGELES, CALIFORNIA.
- APPROVAL OF THIS PLAN BY THE COUNTY OF LOS ANGELES DOES NOT CONSTITUTE A REPRESENTATION AS TO THE ACCURACY OF THE LOCATION OF OR THE EXISTENCE OR NON-EXISTENCE OF ANY UNDERGROUND UTILITY PIPE, OR STRUCTURE WITHIN THE LIMITS OF THIS PROJECT. THIS NOTE APPLIES TO ALL PAGES.
- REFER TO SECTION 7-10.41 OF THE STANDARD SPECIFICATIONS REGARDING SAFETY ORDERS.
- FROM THE ISSUANCE OF THE REQUIRED SEWER CONSTRUCTION PERMIT, THE CONTRACTOR SHALL OBTAIN AND FILE WITH THE COUNTY ENGINEER COPIES OF A PERMIT TO SEWERAGE IN COUNTY STREETS FROM THE LOS ANGELES COUNTY ROAD DEPARTMENT, A PERMIT FOR EXCAVATIONS AND TRENCHES FROM THE STATE OF CALIFORNIA, DIVISION OF INDUSTRIAL SAFETY AND A CERTIFICATE OF WORKER'S COMPENSATION INSURANCE WITH THE DEPARTMENT OF COUNTY ENGINEER, 500 SOUTH VERNON, RM. 400, LOS ANGELES, CALIFORNIA 90009, MARKED AS THE CERTIFICATE HOLDER TO BE NOTIFIED 30 DAYS PRIOR TO CANCELLATION OF POLICY.

CONSTRUCTION NOTES:

- WORK SHALL BE CONSTRUCTED ACCORDING TO THE STANDARD SPECIFICATIONS FOR PUBLIC WORKS CONSTRUCTION 11-82 EDITION WITH 1982 SUPPLEMENTS AND COUNTY ENGINEER SPECIAL PROVISIONS FOR THE CONSTRUCTION OF SANITARY SEWERS DATED SECT. 8-1876 AND SHALL BE PROSECUTED ONLY IN THE PRESENCE OF THE COUNTY ENGINEER.
- THE CONTRACTOR SHALL NOTIFY THE CONSTRUCTION DIVISION BY TELEPHONE, IN DIVISION 9 0747, EXT. 81531, AT LEAST TWENTY-FOUR HOURS BEFORE STARTING ANY WORK UNDER THIS CONTRACT.
- HOUSE LATERALS TO BE CONSTRUCTED WITH INVERTS AT PROPERTY LINE & FEET BELOW CURB GRADE EXCEPT AS NOTED.
- WYE OR TEE BRANCHES MAY BE USED FOR CONNECTIONS TO MAINLINE SEWERS EXCEPT AS NOTED.
- ALL STRUCTURES SHALL BE EITHER BRICK MANHOLES PER S-3 OR PRECAST CONCRETE MANHOLES PER S-36, EXCEPT AS NOTED.
- PROVIDE STAKES ON THE PROPERTY LINE OR PROPERTY LINES PRODUCED AT RIGHT ANGLES TO THE SEWER LINE AT THE CENTER LINE OF EACH MANHOLE.
- MANHOLE TOPS IN UNIMPAVED AREAS SHALL BE 30 INCHES ABOVE FINISHED GRADE.
- VITRIFIED CLAY PIPE JOINTS SHALL BE TYPE "B", OR "C" PER STANDARD SPECIFICATIONS SECTION 308-2.
- IF A POWER POLE IS WITHIN THREE FEET OF THE SEWER, THE SEWER SHALL BE ENCASED, PER S-23, CASE B, TWO FEET ON EACH SIDE FROM THE POINT OF INTERFERENCE.
- IF DURING THE COURSE OF CONSTRUCTION IT IS DETERMINED THAT THERE IS LESS THAN FOUR FEET OF COVER OVER THE TOP OF A MAIN LINE OR HOUSE LATERAL V.C.P. SEWER WHICH IS NOT INDICATED ON THE PLANS, THE PIPE SHALL BE ENCASED PER S-23, CASE B UNLESS OTHERWISE APPROVED BY THE COUNTY ENGINEER.
- ALL JOINTS BETWEEN CAST IRON PIPE AND VITRIFIED CLAY PIPE SHALL BE MADE WITH A RUBBER SLEEVE JOINT, TYPE "C" OR "D", WITH BUSHING IF NECESSARY PER STANDARD SPECIFICATIONS SECTION 308-2.
- SEWERS TO BE TESTED FOR LEAKAGE PER SECTION 306-3.2 OF THE STANDARD SPECIFICATIONS AND SPECIAL PROVISIONS.
- REINFORCE ALL TRENCHES WITHIN PAVED AREAS TO MEET L.A. COUNTY ROAD DEPT. OR CALIFORNIA STATE HIGHWAY REQUIREMENTS IN ACCORDANCE WITH PERMITS.
- FULL COMPLIANCE WITH SECTION 306-1.3 OF THE SPECIAL PROVISIONS WILL BE REQUIRED FOR BACKFILL IN STREETS. CERTIFICATION OF BACKFILL COMPACTION AND SAND EQUIVALENCY BY A QUALIFIED, RESEARCHED TESTING LABORATORY SHALL BE PROVIDED BY THE PERMITTEE PRIOR TO THE ISSUANCE OF A CERTIFICATE OF PARTIAL ACCEPTANCE.
- SPECIAL BACKFILL IN PAVED CONSTRUCTION: (A) BACKFILL TRENCH AND REPLACE OTHER EARTH SO AS TO ACHIEVE THE NATURAL OR FINISHED GRADES AND SLOPES SHOWN ON THE BONDING PLAN APPROVED FOR THIS DEVELOPMENT BY THE BONDING AND SAFETY DIVISION. (B) ALL BACKFILL AND SAND RELATED SHALL BE COMPLETED TO A MINIMUM OF 95% BACKFILL DENSITY PER A.S.T.M. STD. METHOD OF TEST D698-57T AS MODIFIED ACCEPTABLE CERTIFICATION OF SUCH COMPACTION SHALL BE SUBMITTED TO THE ENVIRONMENTAL DEVELOPMENT DIVISION.

PROFILE, ALIGNMENT AND GRADE OF
SANITARY SEWERS PAGE 1
 TO BE CONSTRUCTED IN
TRACT NO. 31426

PRIVATE CONTRACT NO. 10037
 INDEX C-A-92

W.S. 62
 9 SHEETS, 18 PAGES
 SCALE: VERT. 1"=8'
 HORIZ. 1"=40'
 NOVEMBER, 1981
 PREPARED IN THE OFFICES OF

50199

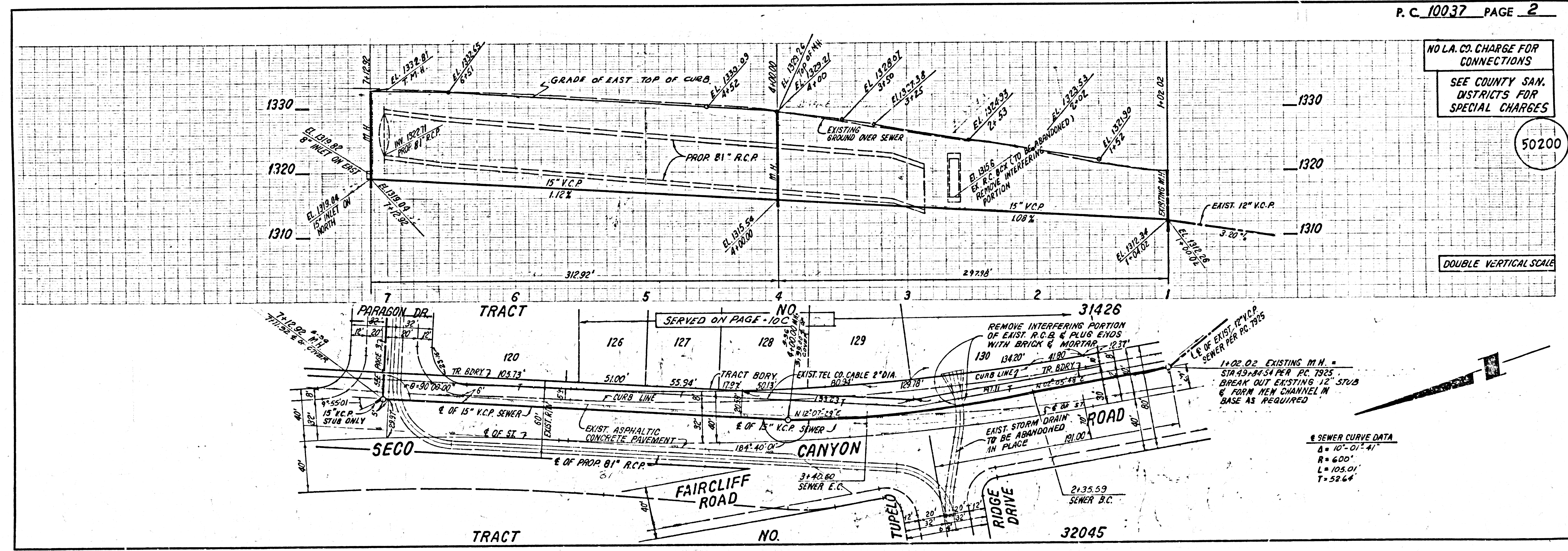
SIMAND ENGINEERING ASSOCIATES
 1530 S. GARDEN BLVD., VAN NUYS
 CALIFORNIA 91411, (213) 787-8550
 REG. C.E. NO. 21893

THE FOLLOWING LATEST REVISED STANDARD PLANS ON FILE IN THE OFFICE OF THE COUNTY ENGINEER SHALL APPLY IN THE CONSTRUCTION OF THIS PROJECT:

SEWER	S-1
MINIMUM PUBLIC SAFETY REQUIREMENTS	S-2
BRICK MANHOLE	S-3
STANDARD MANHOLE STEP	S-17
BEDDING FOR SEWER PIPE	S-21
CLEANING AND ENCASING	S-22
WYE OR TEE SUPPORT	S-23
ALLOWABLE TRENCH WIDTHS	S-24
LOCKING MANHOLE FRAME AND COVER	S-25
NON-IMPEDING HIGHEST COVER PER MANHOLE	S-26
SPECIAL HOUSE LATERALS	S-27
SPECIAL SUPPORT AND PROTECTION	S-28
CHIMNEY PIPE & BASE	S-29

COUNTY OF LOS ANGELES, CALIFORNIA
 STEPHEN J. KOONCE, COUNTY ENGINEER
 WALTER E. GARRISON, CHIEF ENGINEER
 CO. SAN. DIST. NO. 26
 APPROVED: *Walter E. Garrison* 7-13-83
 APPROVED: *Stephen J. Koonce* 7/14/83
 CHECKED: *Sandra G. Ball* 7-13-83
 W.S. C.E. NO. 33134
 SANTA CLARITA VALLEY INDG. DIST. 82

P.C. 10037 PAGE 2

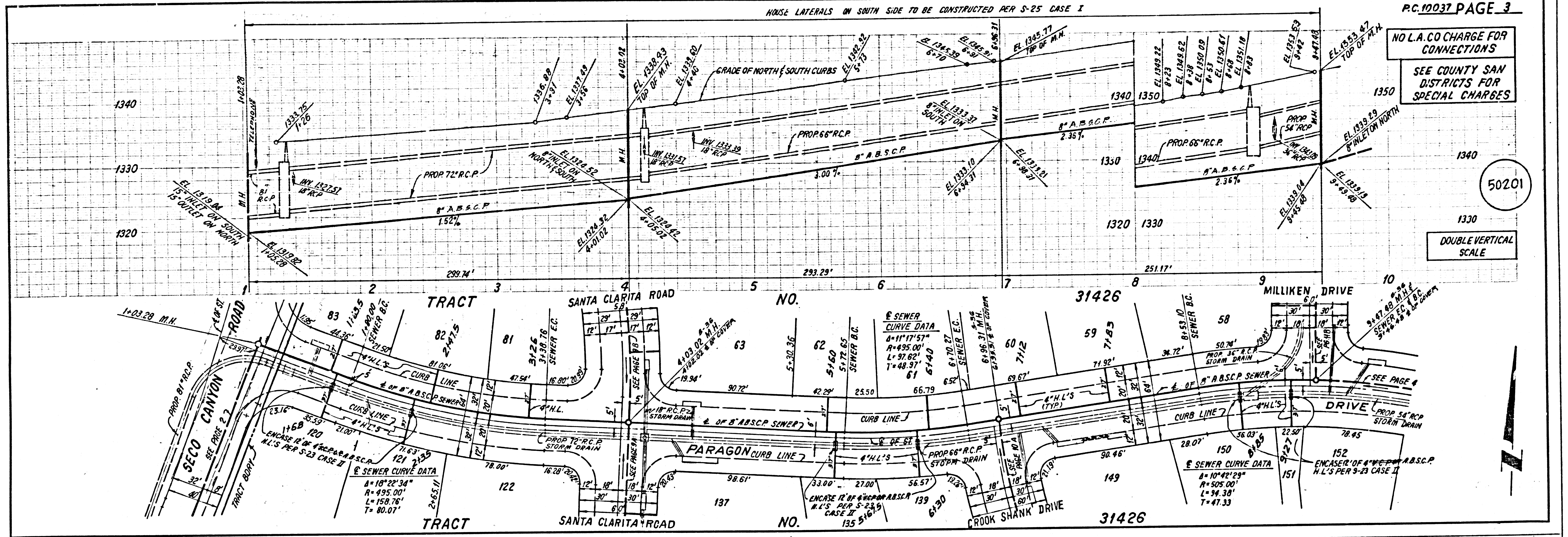


NO L.A. CO. CHARGE FOR CONNECTIONS
 SEE COUNTY SAN. DISTRICTS FOR SPECIAL CHARGES

50200

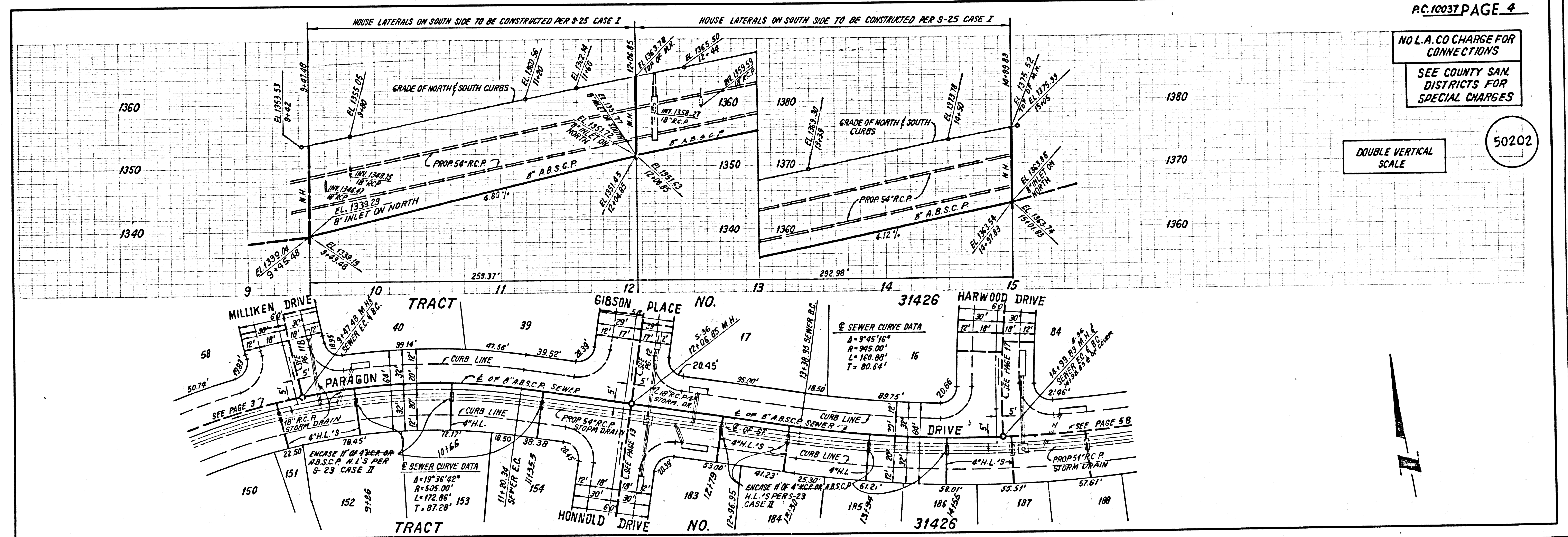
DOUBLE VERTICAL SCALE

SEWER CURVE DATA
 Δ = 10'-07"-41"
 R = 600'
 L = 105.01'
 T = 52.64'



PC.10037 PAGE 3
 NO L.A. CO CHARGE FOR CONNECTIONS
 SEE COUNTY SAN DISTRICTS FOR SPECIAL CHARGES

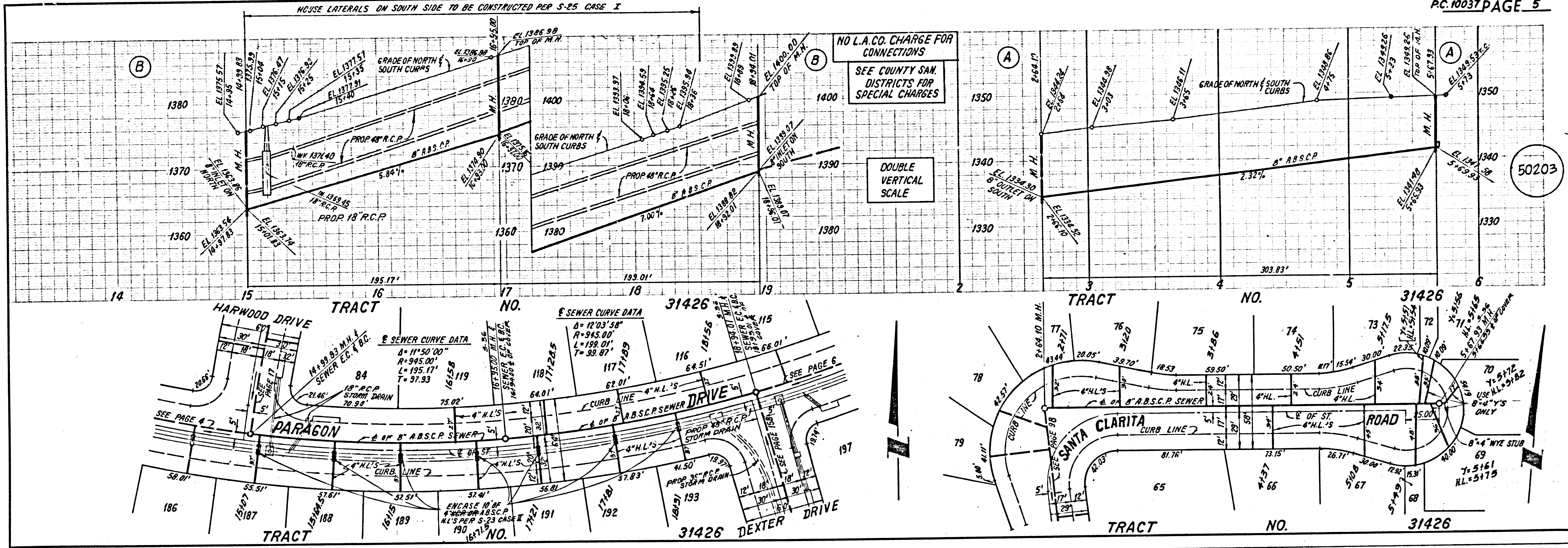
50201
 DOUBLE VERTICAL SCALE



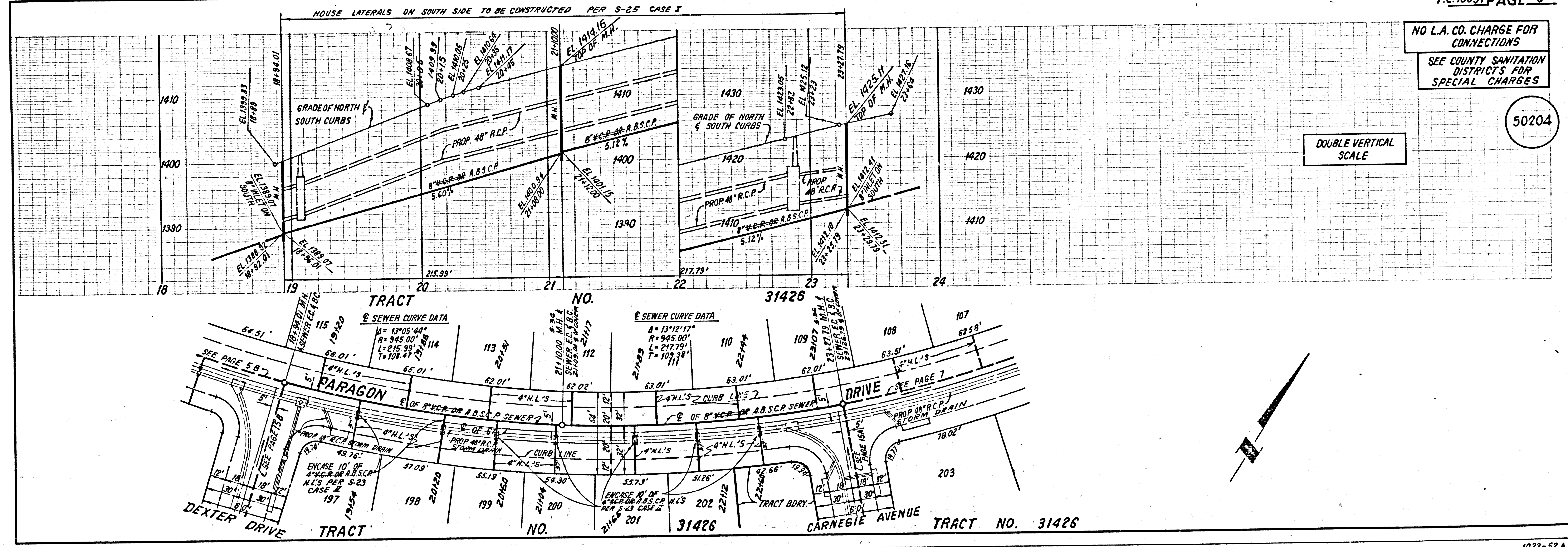
PC.10037 PAGE 4
 NO L.A. CO CHARGE FOR CONNECTIONS
 SEE COUNTY SAN DISTRICTS FOR SPECIAL CHARGES

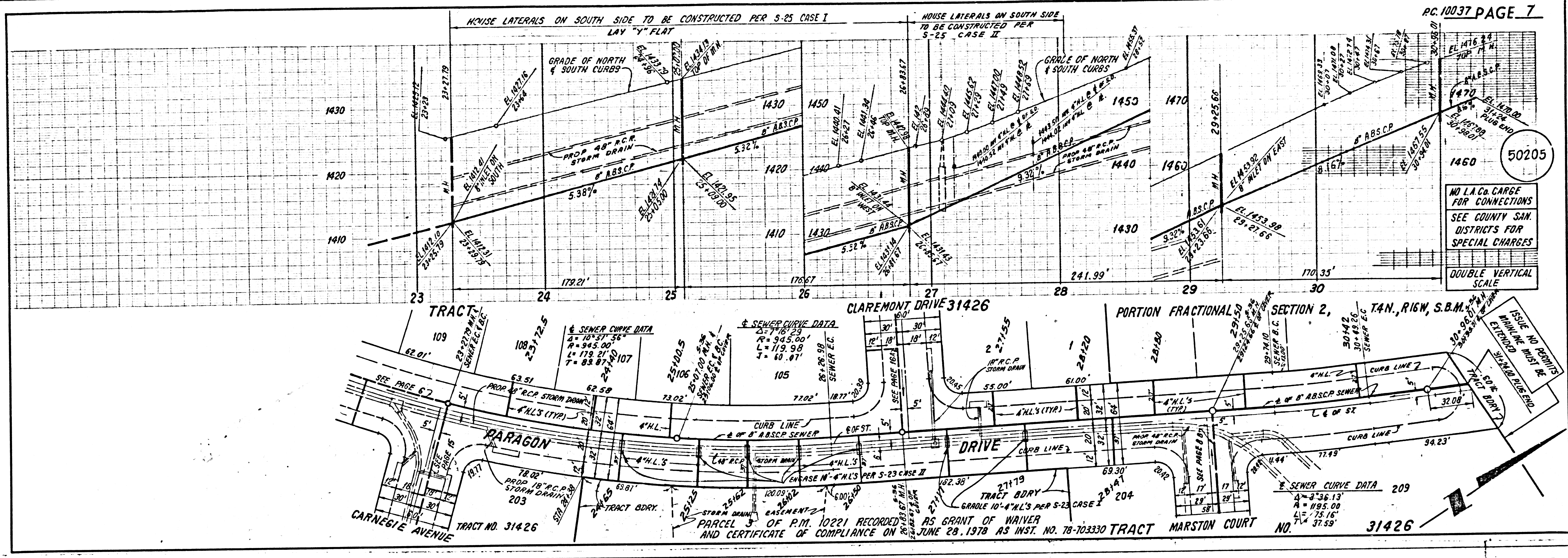
50202
 DOUBLE VERTICAL SCALE

S 16001 29 25NE ON TRACT

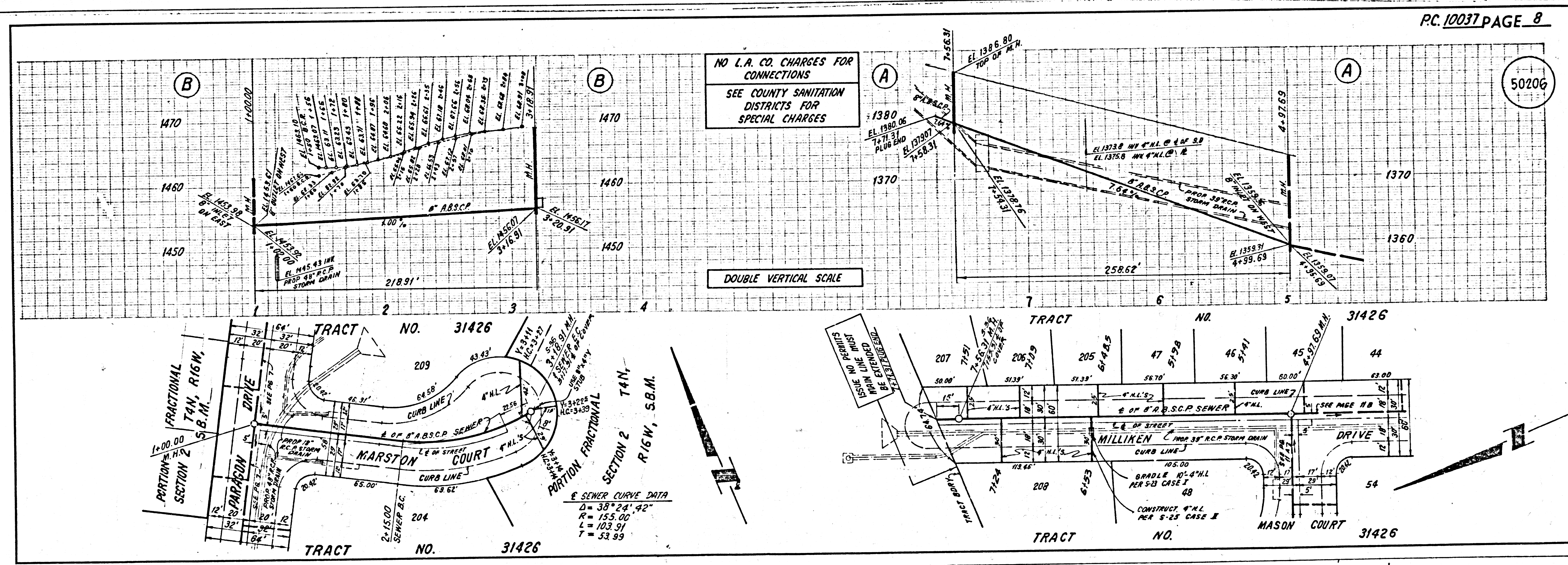


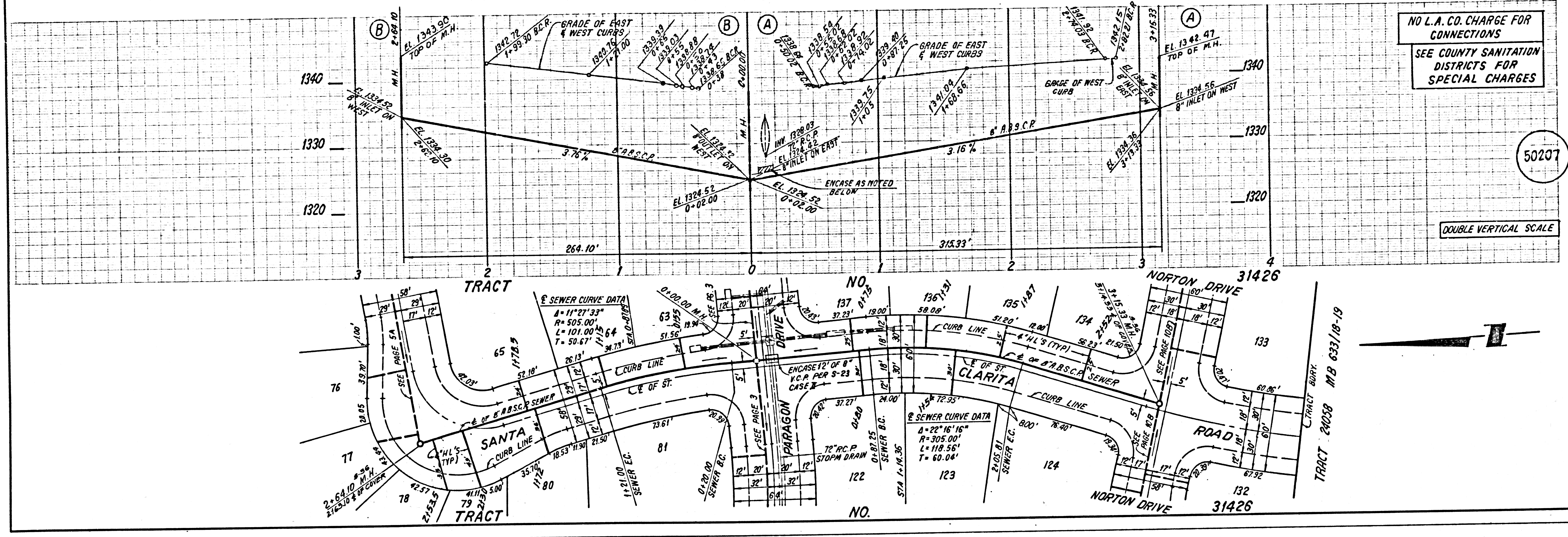
TRACT NO. 31426 BC 10037 ③



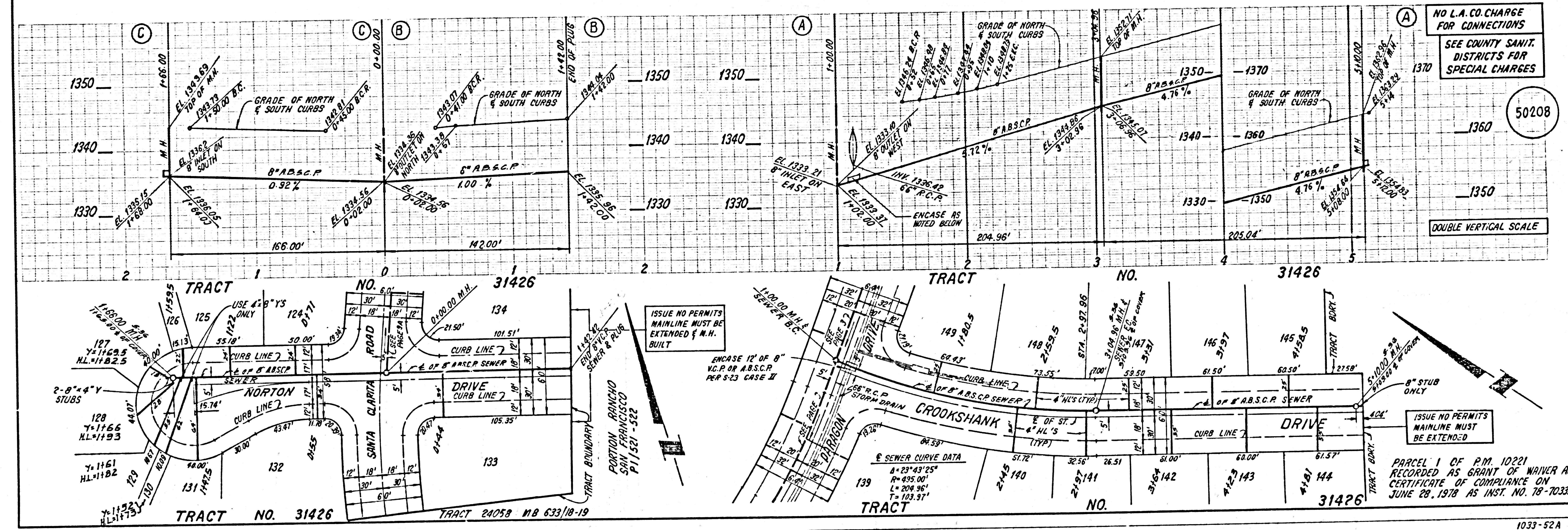


7E001 29 ASPIC ON T3ART





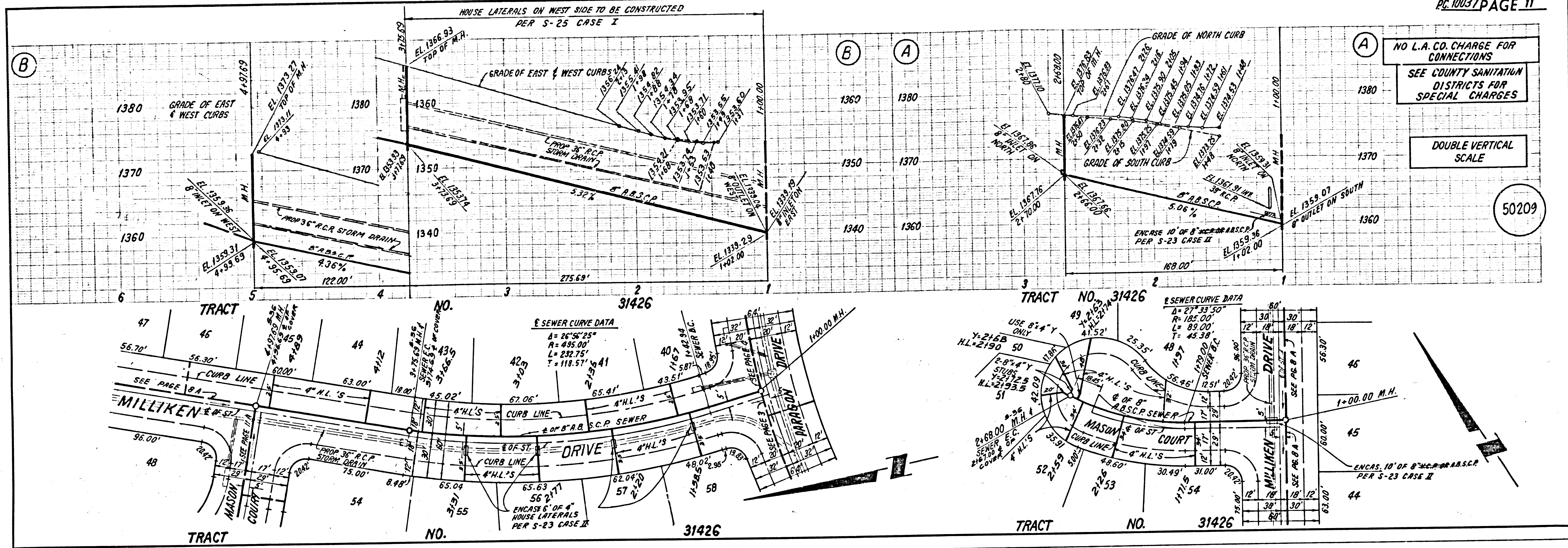
TRACT 24058 MB 633/10-19



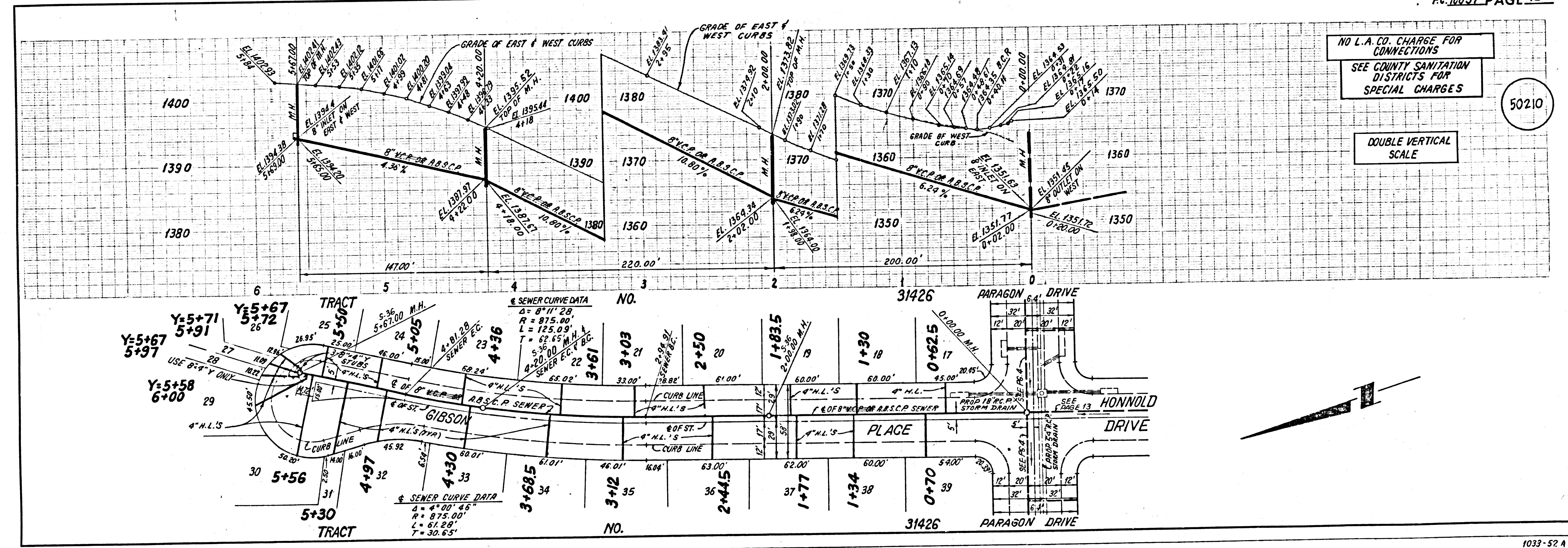
ISSUE NO PERMITS MAINLINE MUST BE EXTENDED & M.H. BUILT

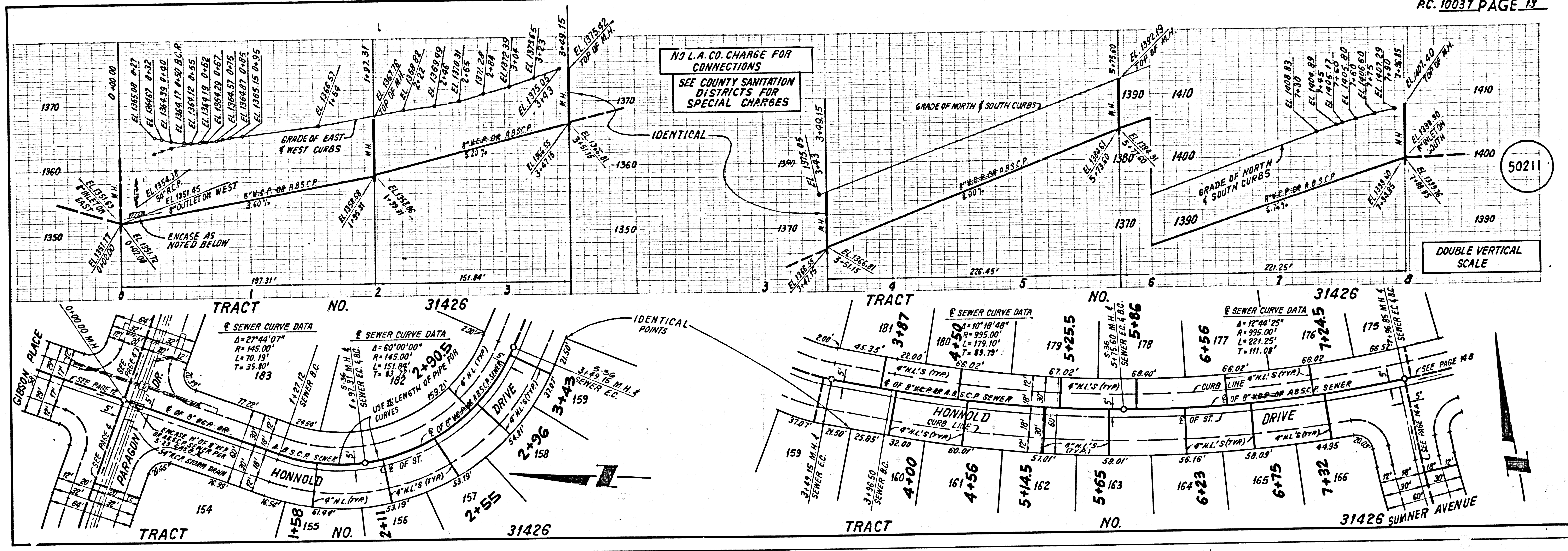
ISSUE NO PERMITS MAINLINE MUST BE EXTENDED

PARCEL 1 OF P.M. 10221 RECORDED AS GRANT OF WAIVER AND CERTIFICATE OF COMPLIANCE ON JUNE 28, 1978 AS INST. NO. 78-703330

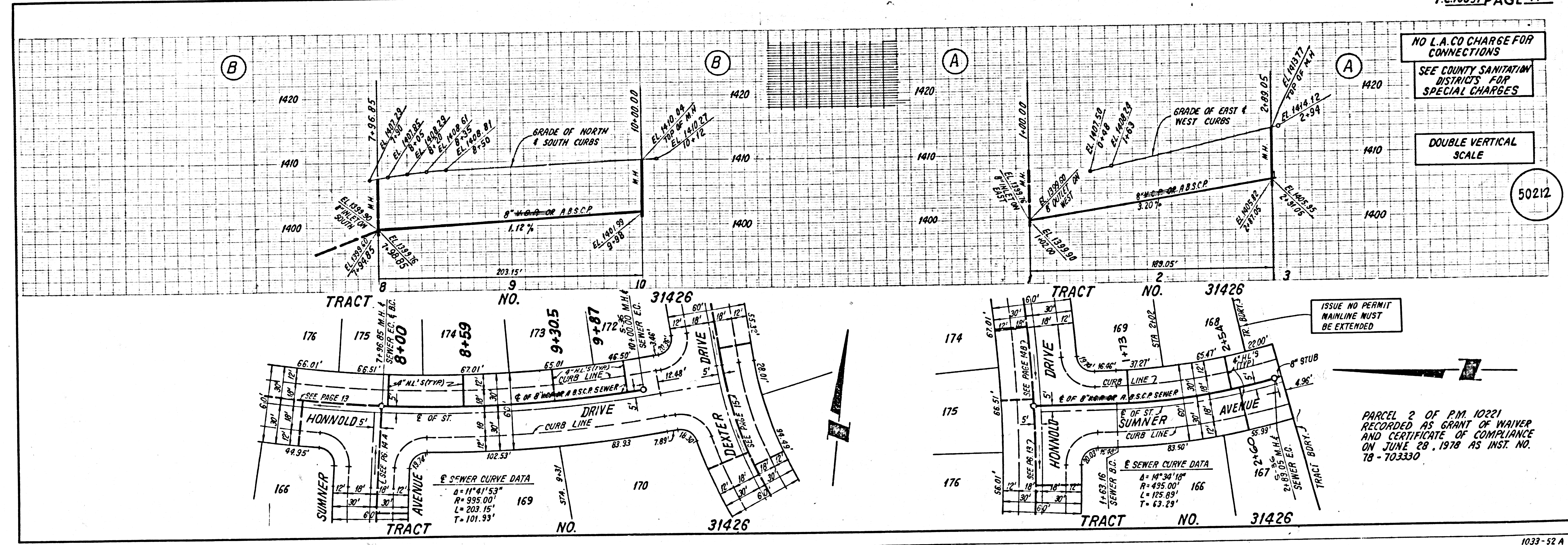


LEGEND ON TRACT



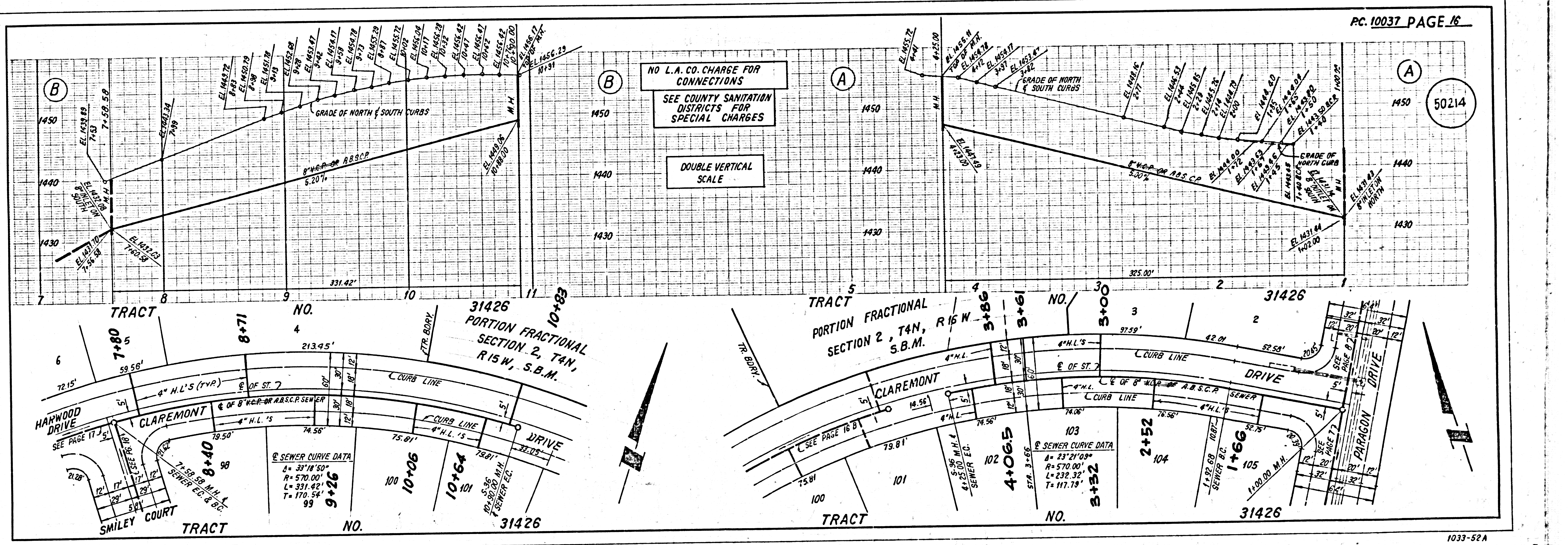
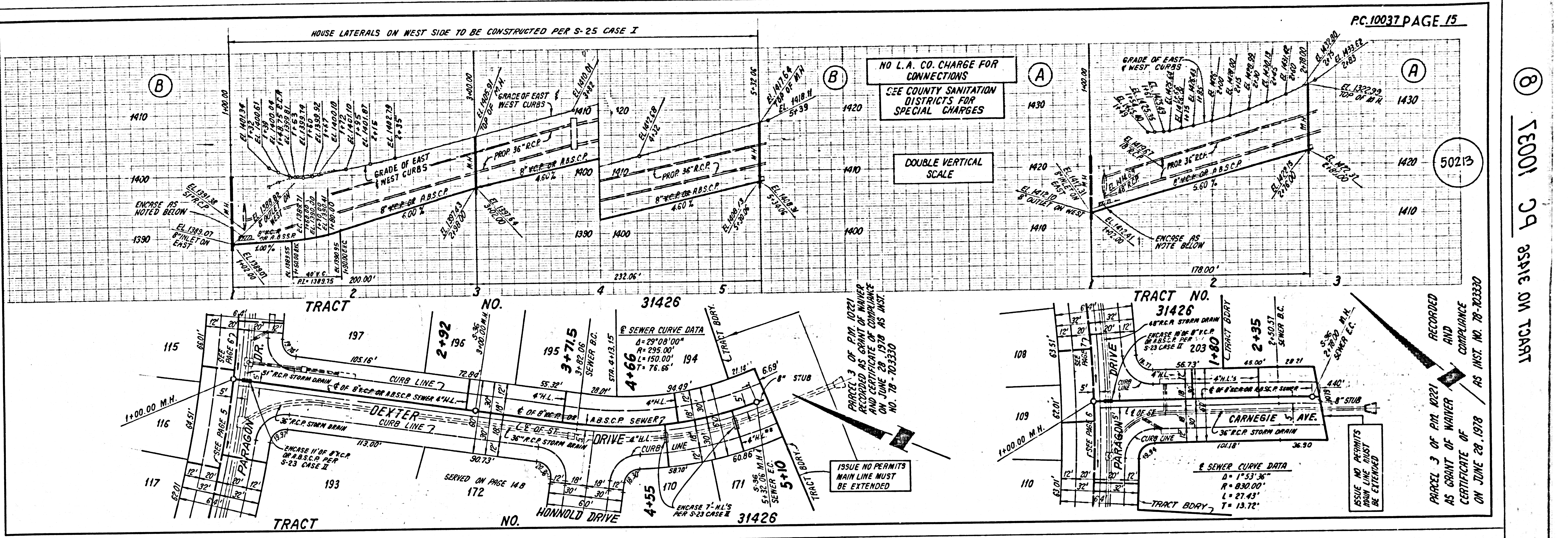


5001 29 3336 ON TRACT



ISSUE NO PERMIT MAINLINE MUST BE EXTENDED

PARCEL 2 OF P.M. 10221 RECORDED AS GRANT OF WAIVER AND CERTIFICATE OF COMPLIANCE ON JUNE 28, 1978 AS INST. NO. 78-703330

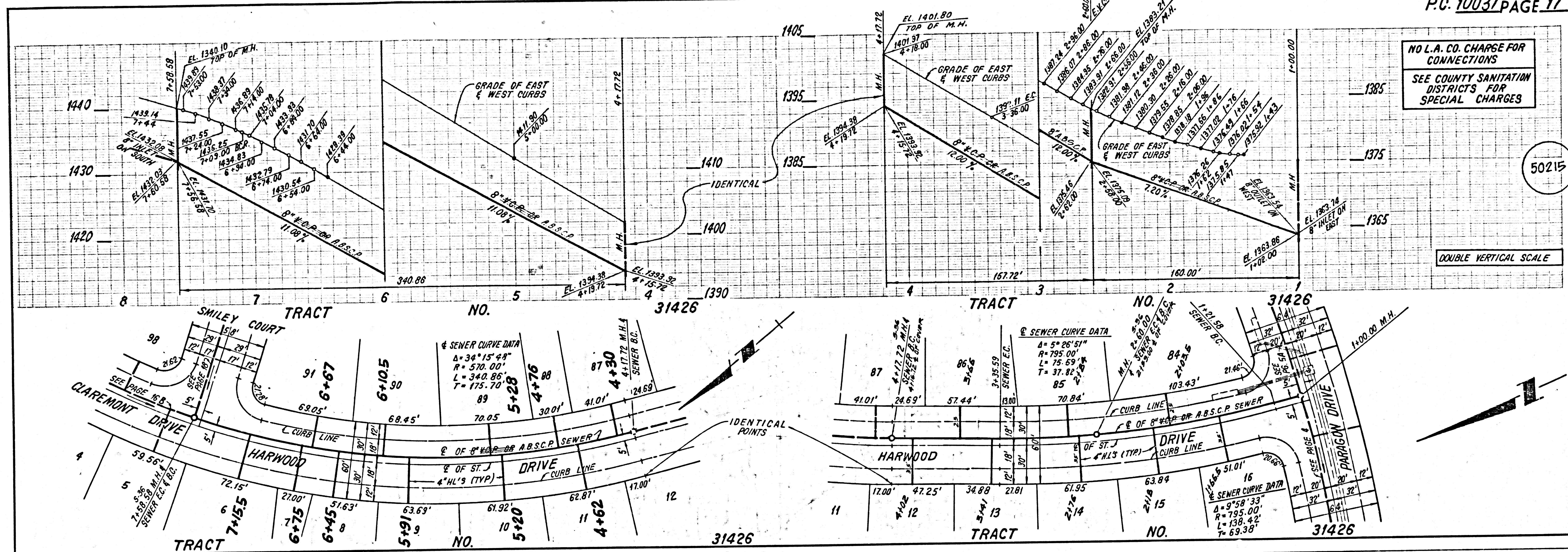


8
 15001 29 85816 ON TRACT

NO L.A. CO. CHARGE FOR CONNECTIONS
SEE COUNTY SANITATION DISTRICTS FOR SPECIAL CHARGES

50215

DOUBLE VERTICAL SCALE



NO L.A. CO. CHARGE FOR CONNECTIONS
SEE COUNTY SANITATION DISTRICTS FOR SPECIAL CHARGES

50216

DOUBLE VERTICAL SCALE

