

B.M. 06-08540 ELEV. 876.624
 L.A.C.E. WIRE SPIKE IN W. CURB
 SHELTONDALE AVE. 4'S. OF B.C.
 CB RET'S OF VANOWEN ST
 MALIBU QUAD. 19 75 ADJ.

DOUBLE SCALE

PROFILE, ALIGNMENT AND GRADE OF
SANITARY SEWERS
 TO BE CONSTRUCTED IN
TRACT No. 33949

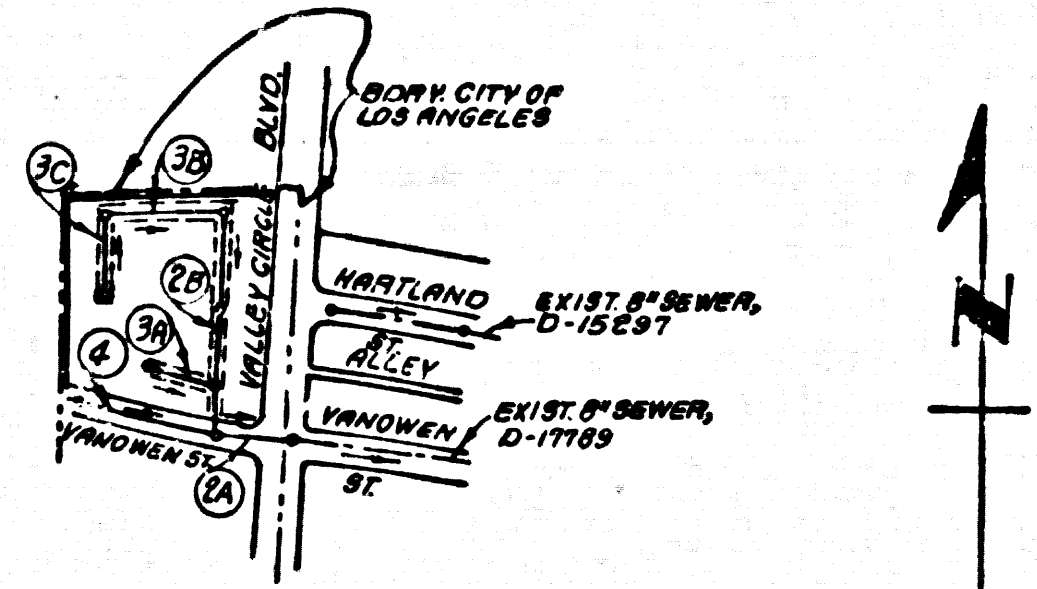
PRIVATE CONTRACT NO. 10039

C-218
 W.S. 174-077 (60)
 2 SHEETS, 4 PAGES

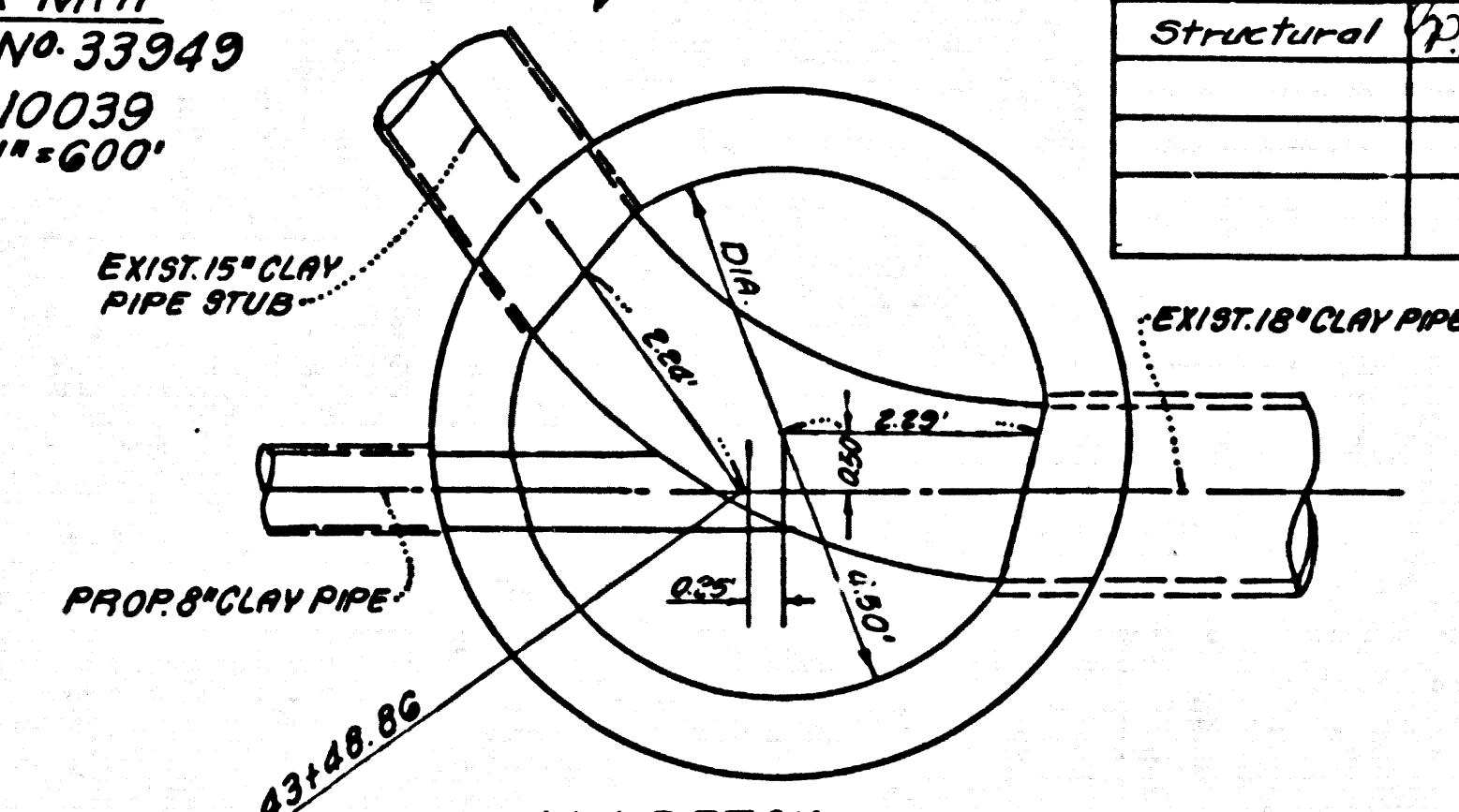
49969

SCALE: VERT. 1"=8'
 HORIZ. 1"=20'
 NOVEMBER, 1981
 PREPARED IN THE OFFICES OF
E.L. PEARSON & ASSOCIATES
 1555 W. REDONDO BEACH BLVD., GARDEN, 90027
 BY: *Robert T. Quinn*
 REG. C. E. No. 24288

NOTE: NUMBERS IN CIRCLES
 INDICATE PHOTO NUMBERS

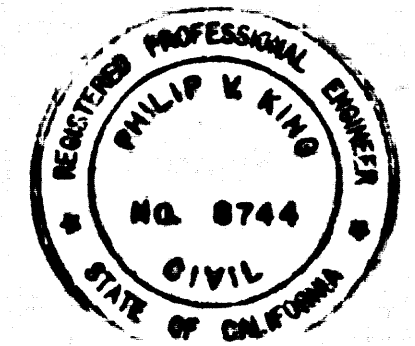


INDEX MAP
 TRACT No. 33949
 P.C. No. 10039
 SCALE: 1"=600'



M.H. DETAIL
 EXIST. CITY OF L.A. OFFSET MODIFIED M.H.B
 PAGE 2A, STS. 43+48.06
 NO SCALE

CITY OF LOS ANGELES			
APPROVALS	ENGINEER	DATE	
Transportation	<i>W. Bradley</i>	7/13/81	DIVISION ENGINEER
Structural	<i>P.H. S. Park</i>	7/13/81	DEPUTY ENGINEER
		7/13/81	APPROVED
			ACTING CITY ENGINEER



THE EXISTENCE AND LOCATION OF ANY UNDERGROUND UTILITY
 PIPES OR STRUCTURES SHOWN ON THESE PLANS ARE OBTAINED
 BY A SEARCH OF THE AVAILABLE RECORDS TO THE BEST OF
 OUR KNOWLEDGE THERE ARE NO EXISTING UTILITIES EXCEPT
 AS SHOWN ON THIS MAP. THE CONTRACTOR IS REQUIRED TO
 TAKE PRECAUTIONARY MEASURES TO PROTECT THE UTILITY
 LINES SHOWN AND ANY OTHER LINES NOT OF RECORD OR NOT
 SHOWN ON THIS DRAWING.

Robert T. Quinn R.C.E. 24288

GENERAL NOTES:

- ELEVATIONS ARE IN FEET ABOVE U.S.C. & G.S. MEAN LEVEL, DATUM OF 1929.
- NO REVISIONS SHALL BE MADE IN THESE PLANS WITHOUT THE APPROVAL OF THE COUNTY ENGINEER.
- NO REPRESENTATIVE OF THE COUNTY ENGINEER WILL SURVEY OR LAY OUT ANY PORTION OF THE WORK.
- GRADES TO WHICH THIS IMPROVEMENT IS TO BE CONSTRUCTED ARE SHOWN ON PLANS AND PROFILES. GRADE POINTS FOR TOP OF CURBS, CENTER LINE OF STREETS, OR CENTER LINE OF ALLEYS ARE SHOWN BY CIRCLES ON PROFILES. AT ALL POINTS BETWEEN DESIGNATED POINTS THE GRADE SHALL BE ESTABLISHED SO AS TO CONFORM TO A STRAIGHT LINE DRAWN BETWEEN SAID DESIGNATED POINTS.
- THE PRIVATE ENGINEER SHALL FURNISH THE COUNTY ENGINEER WITH GRADE SHEETS AND STATIONINGS FOR ALL HOUSE LATERALS AND "T" OR "Y" BRANCHES AND SHALL PROVIDE STAKES FOR THEM AT THEIR PROPER LOCATIONS WITH STATIONINGS PLAINLY MARKED. ALL HOUSE LATERALS SHALL BE CONSTRUCTED IN A STRAIGHT ALIGNMENT AT RIGHT ANGLES FROM THE MAIN LINE SEWER EXCEPT AS SHOWN ON THE PLANS. HOUSE LATERALS FROM CHIMNEYS SHALL NOT HAVE AN ANGLE OF LESS THAN 45° WITH THE MAIN LINE SEWER. ANY CHANGE IN ALIGNMENT SHALL BE REQUESTED IN WRITING BY THE PRIVATE ENGINEER.
- THE PRIVATE ENGINEER SHALL FURNISH THE HOUSE LATERAL DEPTH AT THE PROPERTY LINE BELOW THE TOP OF CURB ELEVATION FOR EACH HOUSE LATERAL ON THE GRADE SHEET.
- BEFORE WORK CAN BE STARTED, THE CONTRACTOR MUST OBTAIN A PERMIT TO EXCAVATE IN COUNTY STREETS FROM THE L.A. COUNTY ROAD DEPT., DISTRICT OFFICE NO. 3, AND PAY A FEE TO THE COUNTY ENGINEER, 800 S. VERMONT AVENUE, LOS ANGELES, CA 90017 TO COVER THE COST OF CONSTRUCTION INSPECTION AND RECORD PLANS.
- IF WORK IS TO BE DONE IN A STATE HIGHWAY, A PERMIT MUST BE OBTAINED FROM THE STATE OF CALIFORNIA, DIVISION OF HIGHWAYS, 120 SOUTH SPRING STREET, LOS ANGELES, CALIFORNIA.
- APPROVAL OF THIS PLAN BY THE COUNTY OF LOS ANGELES DOES NOT CONSTITUTE A REPRESENTATION AS TO THE ACCURACY OF THE LOCATION OF OR THE EXISTENCE OR NON-EXISTENCE OF ANY UNDERGROUND UTILITY PIPE, OR STRUCTURE WITHIN THE LIMITS OF THIS PROJECT. THIS NOTE APPLIES TO ALL PAGES.
- REFER TO SECTION 7.16A.1 OF THE STANDARD SPECIFICATIONS, REGARDING SAFETY ORDERS.
- PRIOR TO THE ISSUANCE OF THE REQUIRED SEWER CONSTRUCTION PERMIT, THE CONTRACTOR SHALL OBTAIN AND FILE WITH THE COUNTY ENGINEER COPIES OF A PERMIT TO EXCAVATE IN COUNTY STREETS FROM THE LOS ANGELES COUNTY ROAD DEPARTMENT, A PERMIT FOR EXCAVATIONS AND TRENCHES FROM THE STATE OF CALIFORNIA, DIVISION OF INDUSTRIAL SAFETY AND A CERTIFICATE OF WORKERS COMPENSATION INSURANCE WITH THE DEPARTMENT OF COUNTY ENGINEER, 800 SOUTH VERMONT, P.O. BOX 108, LOS ANGELES, CALIFORNIA 90001, NAMED AS THE CERTIFICATE HOLDER TO BE NOTIFIED 30 DAYS PRIOR TO CANCELLATION OF POLICY.

CONSTRUCTION NOTES:

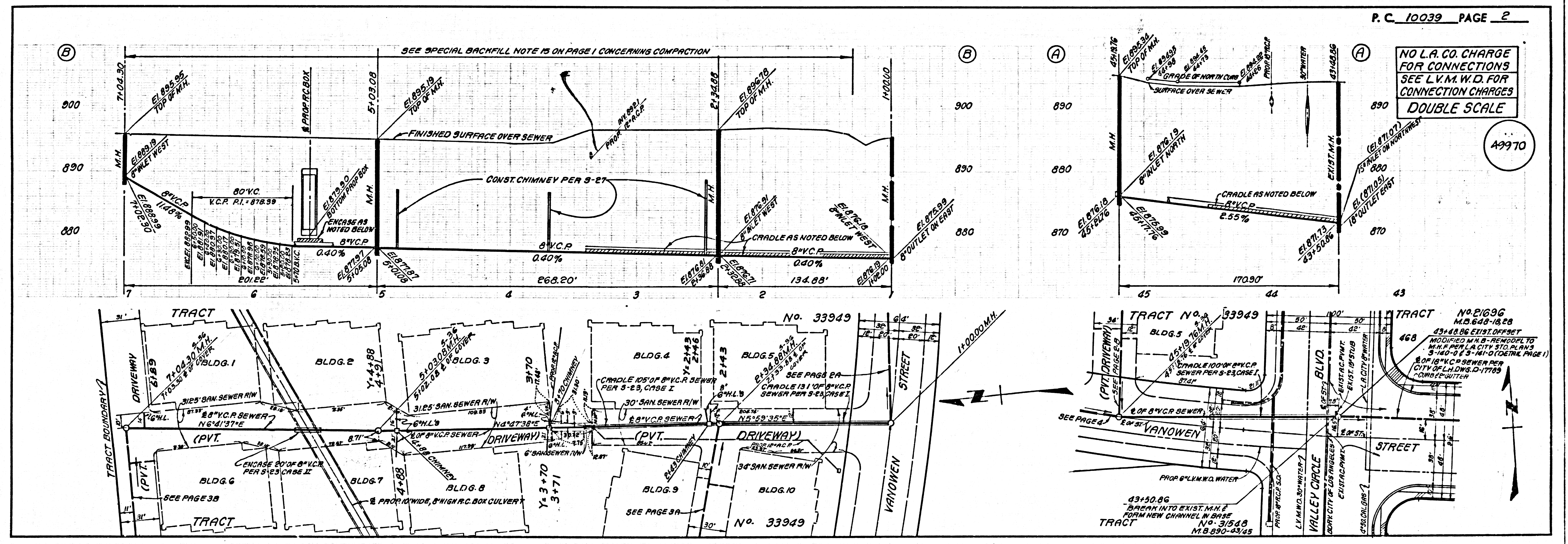
- WORK SHALL BE CONSTRUCTED ACCORDING TO THE STANDARD SPECIFICATIONS FOR PUBLIC WORKS CONSTRUCTION (1979 EDITION WITH SUPPLEMENTS) AND COUNTY ENGINEER SPECIAL PROVISIONS FOR THE CONSTRUCTION OF SANITARY SEWERS DATED 11/27/78 AND SHALL BE PROSECUTED ONLY IN THE PRESENCE OF THE COUNTY ENGINEER.
- THE CONTRACTOR SHALL NOTIFY THE ENVIRONMENTAL DEVELOPMENT DIVISION BY TELEPHONE, 726-5100, AT LEAST TWENTY-FOUR HOURS BEFORE STARTING ANY WORK UNDER THIS CONTRACT.
- HOUSE LATERALS TO BE CONSTRUCTED WITH INVERTS AT PROPERTY LINE 4 FEET BELOW CURB GRADE EXCEPT AS NOTED.
- WYE OR TEE BRANCHES MAY BE USED FOR CONNECTIONS TO MAINLINE SEWERS EXCEPT AS NOTED.
- ALL STRUCTURES SHALL BE EITHER BRICK MANHOLES PER 8-3 OR PRECAST CONCRETE MANHOLES PER 8-28, EXCEPT AS NOTED.
- PROVIDE STAKES ON THE PROPERTY LINE OR PROPERTY LINES PRODUCED AT RIGHT ANGLES TO THE SEWER LINE AT THE CENTER LINE OF EACH MANHOLE.
- MANHOLE TOPS IN UNIMPROVED RIGHTS OF WAY TO BE SIX INCHES ABOVE FINISHED GRADE.
- WITHEDED CLAY PIPE JOINTS SHALL BE TYPE "D" OR "B" PER STANDARD SPECIFICATIONS SECTION 808-2.
- IF A POWER POLE IS WITHIN THREE FEET OF THE SEWER, THE SEWER SHALL BE ENCASED, PER 8-28, CASE II, TWO FEET ON EACH SIDE FROM THE POINT OF INTERFERENCE.
- IF DURING THE COURSE OF CONSTRUCTION IT IS DETERMINED THAT THERE IS LESS THAN FOUR FEET OF COVER OVER THE TOP OF A MAIN LINE OR HOUSE LATERAL SEWER WHICH IS NOT INDICATED ON THE PLANS, THE PIPE SHALL BE ENCASED PER 8-28, CASE II UNLESS OTHERWISE APPROVED BY THE COUNTY ENGINEER.
- ALL JOINTS BETWEEN CAST IRON PIPE AND WITHEDED CLAY PIPE SHALL BE MADE WITH A RUBBER GULCH JOINT, TYPE "C" OR "D", WITH RUBBING IF NECESSARY PER STANDARD SPECIFICATIONS, SECTION 308-2.
- SEWERS TO BE TESTED FOR LEAKAGE PER SECTION 308-14 OF THE STANDARD SPECIFICATIONS AND SPECIAL PROVISIONS.
- RESURFACE ALL TRENCHES WITHIN PAVED AREAS TO MEET L.A. COUNTY ROAD DEPT. OR CALIFORNIA STATE HIGHWAY REQUIREMENTS IN ACCORDANCE WITH PERMITS.
- FULL COMPLIANCE WITH SECTION 308-13.3 OF THE SPECIAL PROVISIONS WILL BE REQUIRED FOR BACKFILL IN STREETS. CERTIFICATION OF BACKFILL COMPACTION AND SAND EQUIVALENTS BY A QUALIFIED, REGISTERED TESTING LABORATORY MUST BE PROVIDED BY THE PERMITTEE PRIOR TO THE ISSUANCE OF A CERTIFICATE OF PARTIAL ACCEPTANCE.
- SPECIAL BACKFILL IN BASEMENT CONSTRUCTION: (A) BACKFILL TRENCH AND REPLACE OTHER EARTH SO AS TO ACHIEVE THE NATURAL OR FINISHED GRADES AND SLOPES SHOWN ON THE BASING PLAN APPROVED FOR THIS DEVELOPMENT BY THE BUILDING AND SAFETY DIVISION. (B) ALL BACKFILL AND EARTH REPLACES SHALL BE COMPACTED TO A MINIMUM OF 90% OF MAXIMUM DENSITY PER A.S.T.M. STD. METHOD OF TEST D1557 AS MODIFIED. ACCEPTABLE CERTIFICATION OF SUCH COMPACTION SHALL BE SUBMITTED TO THE ENVIRONMENTAL DEVELOPMENT DIVISION.
- SEWER TRENCH RE SURFACING WITHIN THE CITY OF LOS ANGELES (CTR. 43+48 TO 43+58, PAGE 2A), SHALL BE 8" V.C. ON 10% G.E.

THE FOLLOWING LATEST REVISED STANDARD PLANS ON FILE IN THE OFFICE OF THE COUNTY ENGINEER SHALL APPLY IN THE CONSTRUCTION OF THIS PROJECT:

MINIMUM PUBLIC SAFETY ENCLOSURES	8-1
BRICK MANHOLE	8-2
STANDARD MANHOLE STEP	8-17
ENCASING FOR SEWER PIPE	8-29
CLASING AND BRICKMANS	8-30
WYE OR TEE SUPPORT	8-36
ALLOWABLE TRENCH WIDTH	8-38
SECTION MANHOLE FRAME AND COVER	8-39
NON-SIPHONIC PRECAST CONCRETE MANHOLE	8-40
CHIMNEY PIPE 4" DIA. 8'	8-47

CITY OF LOS ANGELES STANDARD PLANS
 SEWER MANHOLE 18" DIAMETER 8-140-0
 24" DIA. MANHOLE 8-141-0

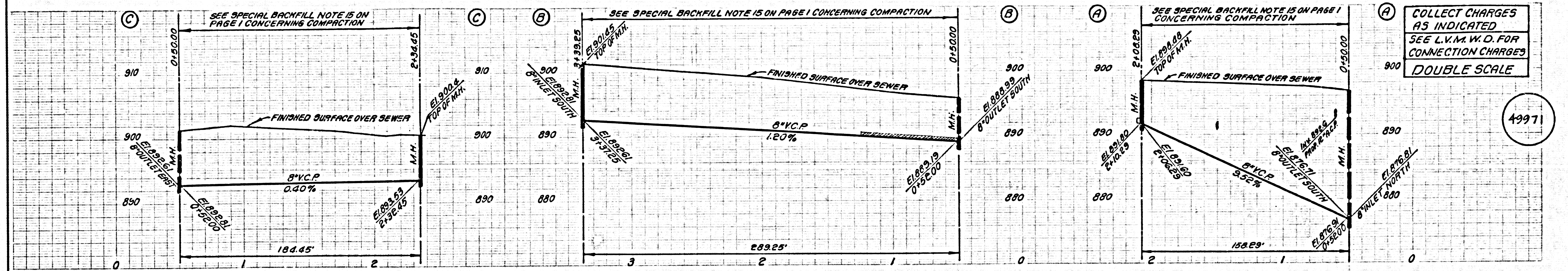
COUNTY OF LOS ANGELES, CALIFORNIA
 STEPHEN J. KOONCE, COUNTY ENGINEER LRS VIRGENES MUNICIPAL WATER DISTRICT
 APPROVED: *K.P. Murphy* 7/16/81
 CHECKED: *Ralph David West* 7/13/81
 H.W. STOKES, CHIEF ENGINEER
 REG. C.E. NO. 16993
 CALABASAS BLDG. DIST. 81



P. C. 10039 PAGE 2

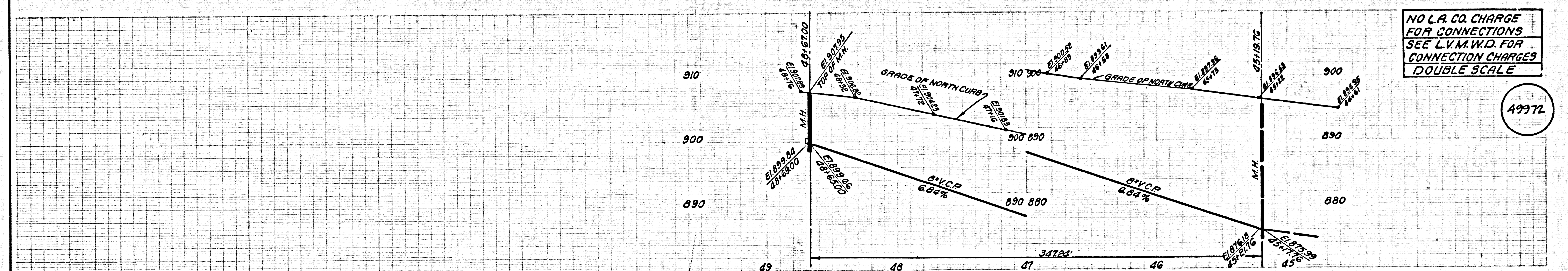
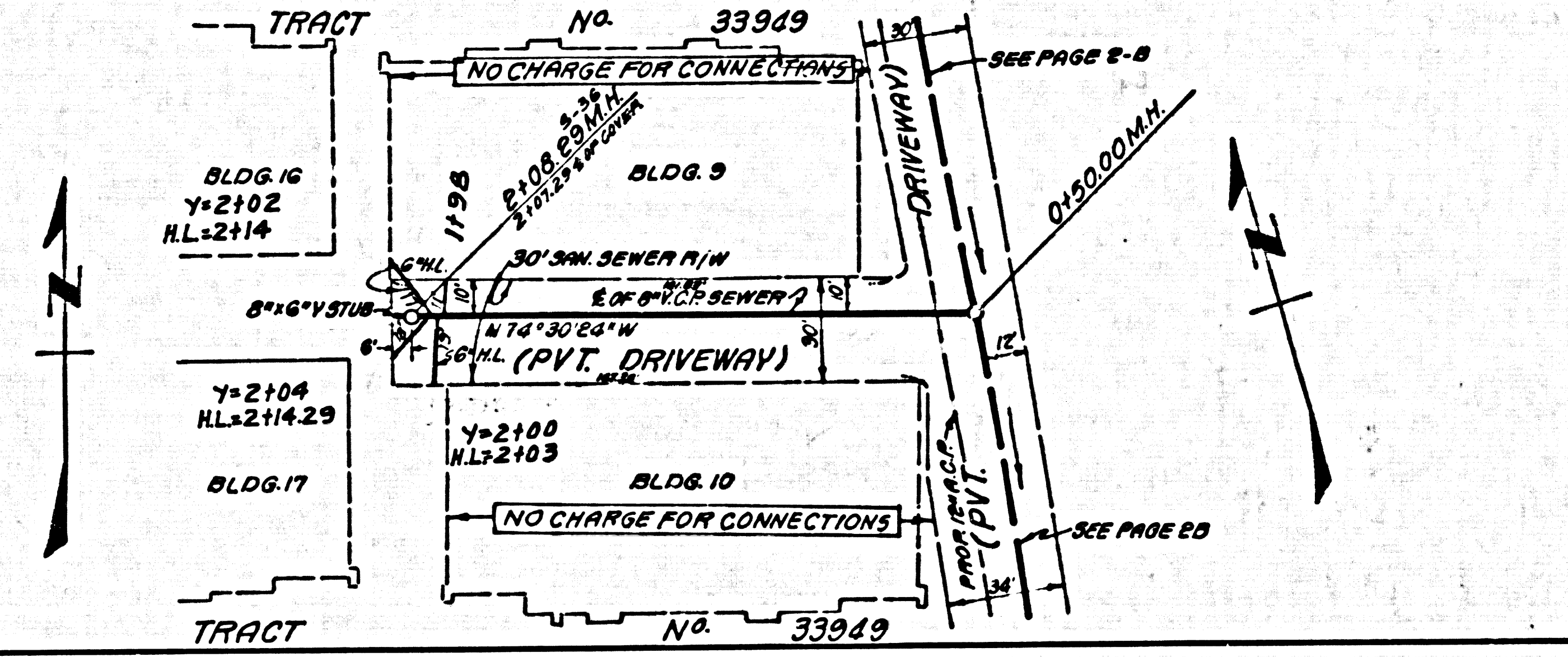
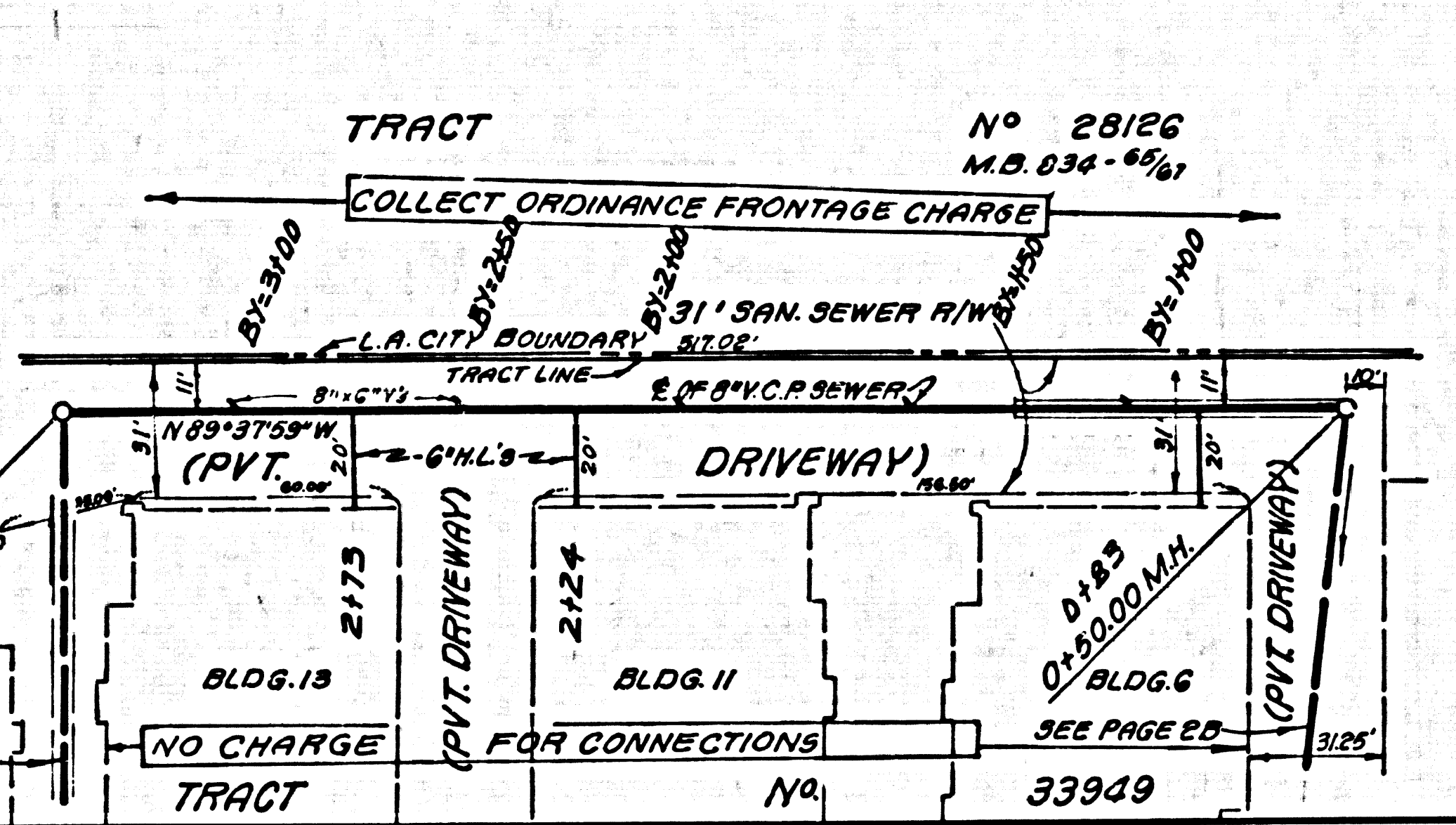
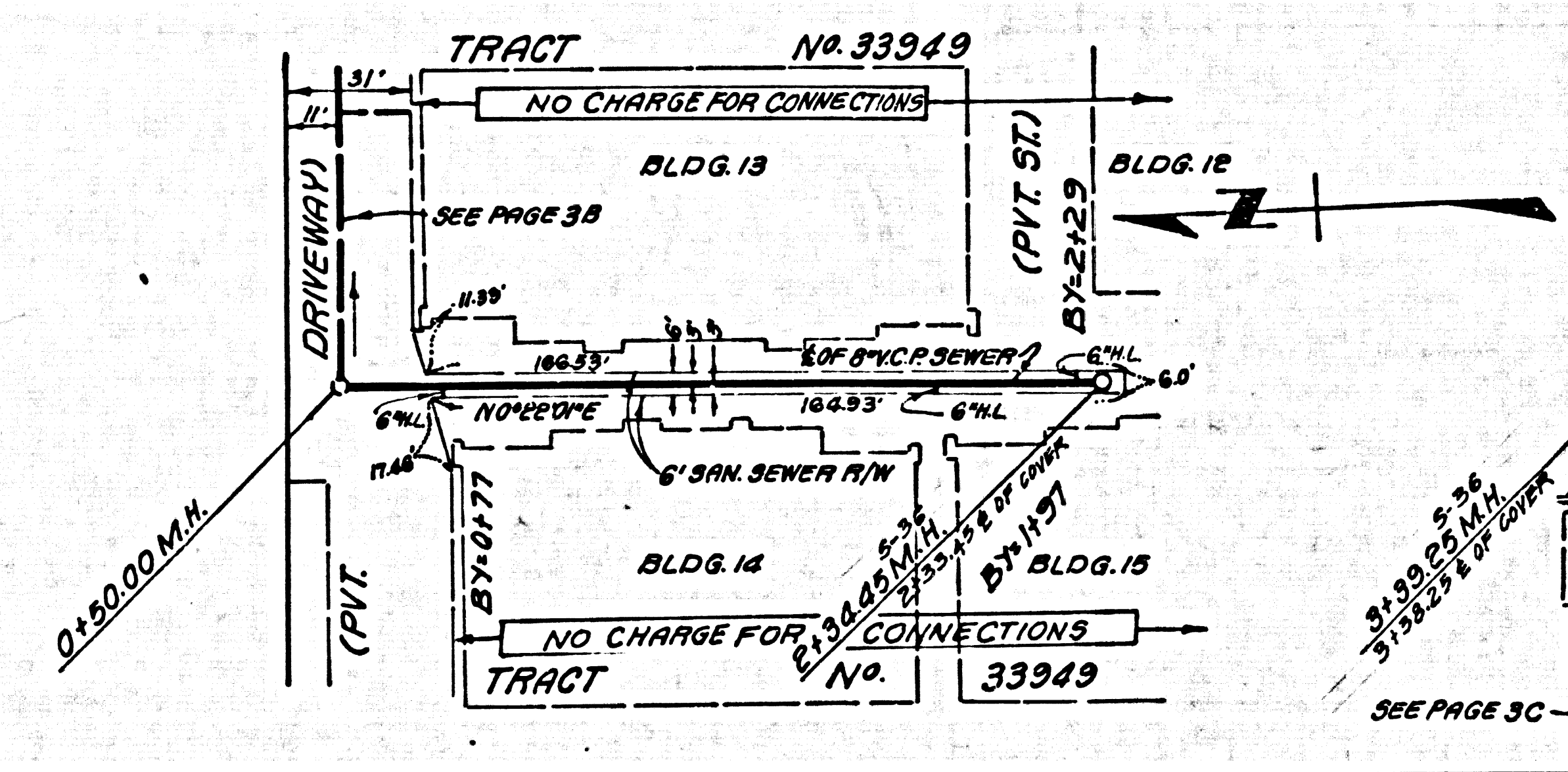
NO L.A. CO. CHARGE FOR CONNECTIONS
 SEE L.V.M.W.D. FOR CONNECTION CHARGES
 DOUBLE SCALE

49970



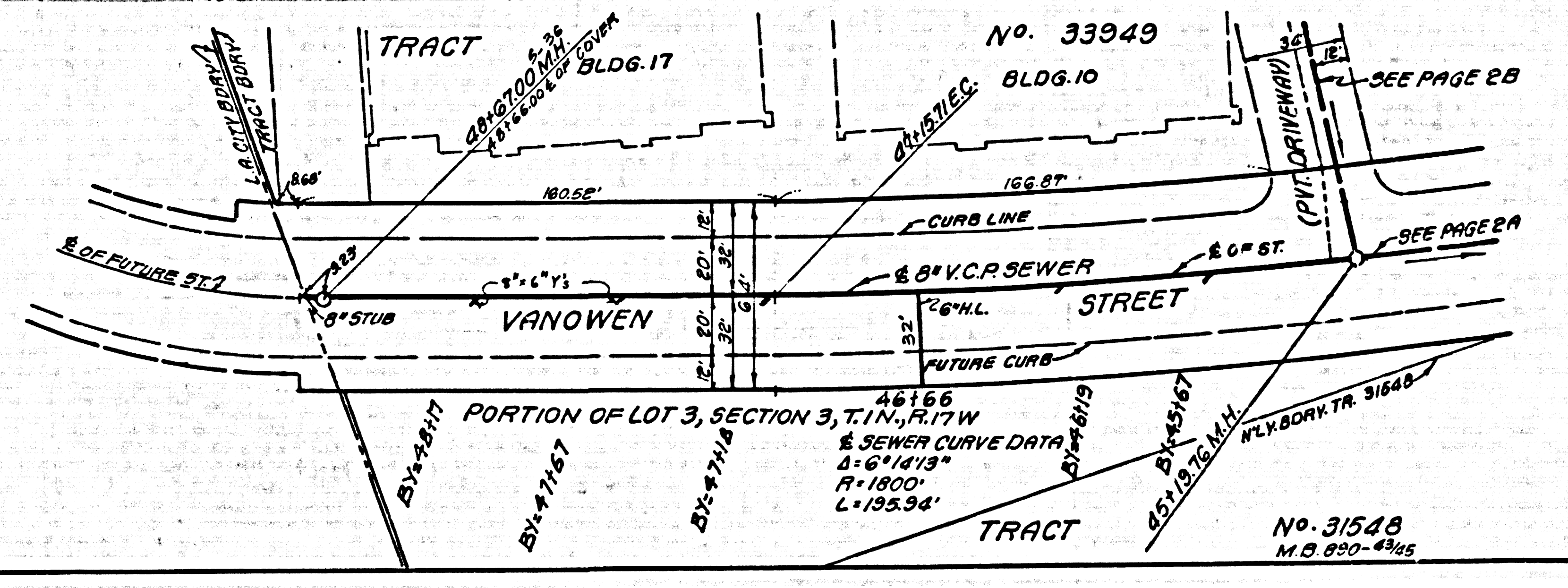
COLLECT CHARGES AS INDICATED
SEE L.V.M.W.D. FOR CONNECTION CHARGES
DOUBLE SCALE

49971



NO L.A. CO. CHARGE FOR CONNECTIONS
SEE L.V.M.W.D. FOR CONNECTION CHARGES
DOUBLE SCALE

49972



800129 EDEEN TRACT