

TRACT NO. 33854
 PRIVATE CONTRACT NO. 10042
 INDEX 258 S145
 W.S. 62
 1 SHEET OF 2 PAGES

SCALE: VERT. 1"=4'
 HORIZ. 1"=20'
 FEBRUARY, 1982
 PREPARED IN THE OFFICES OF

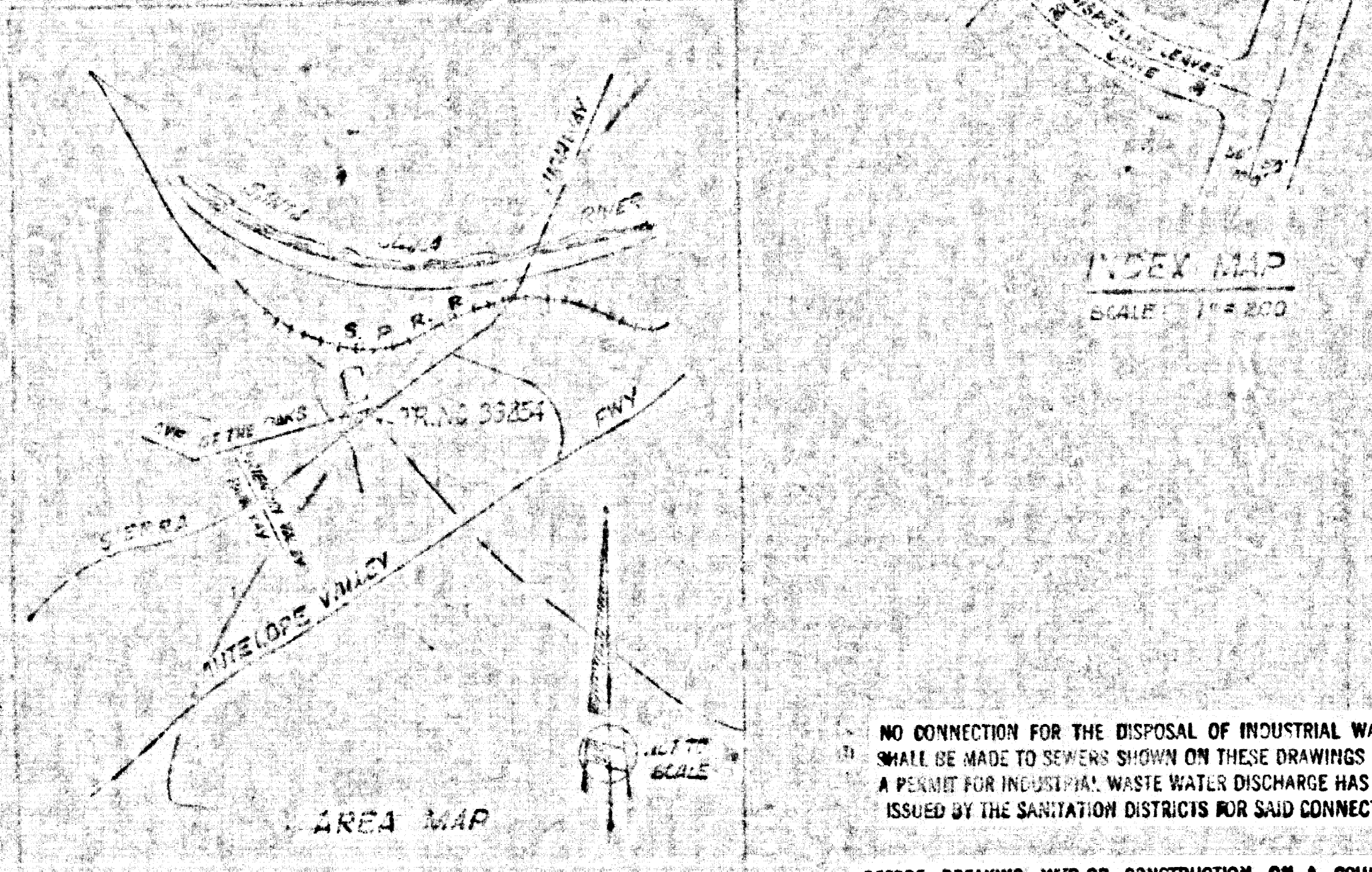
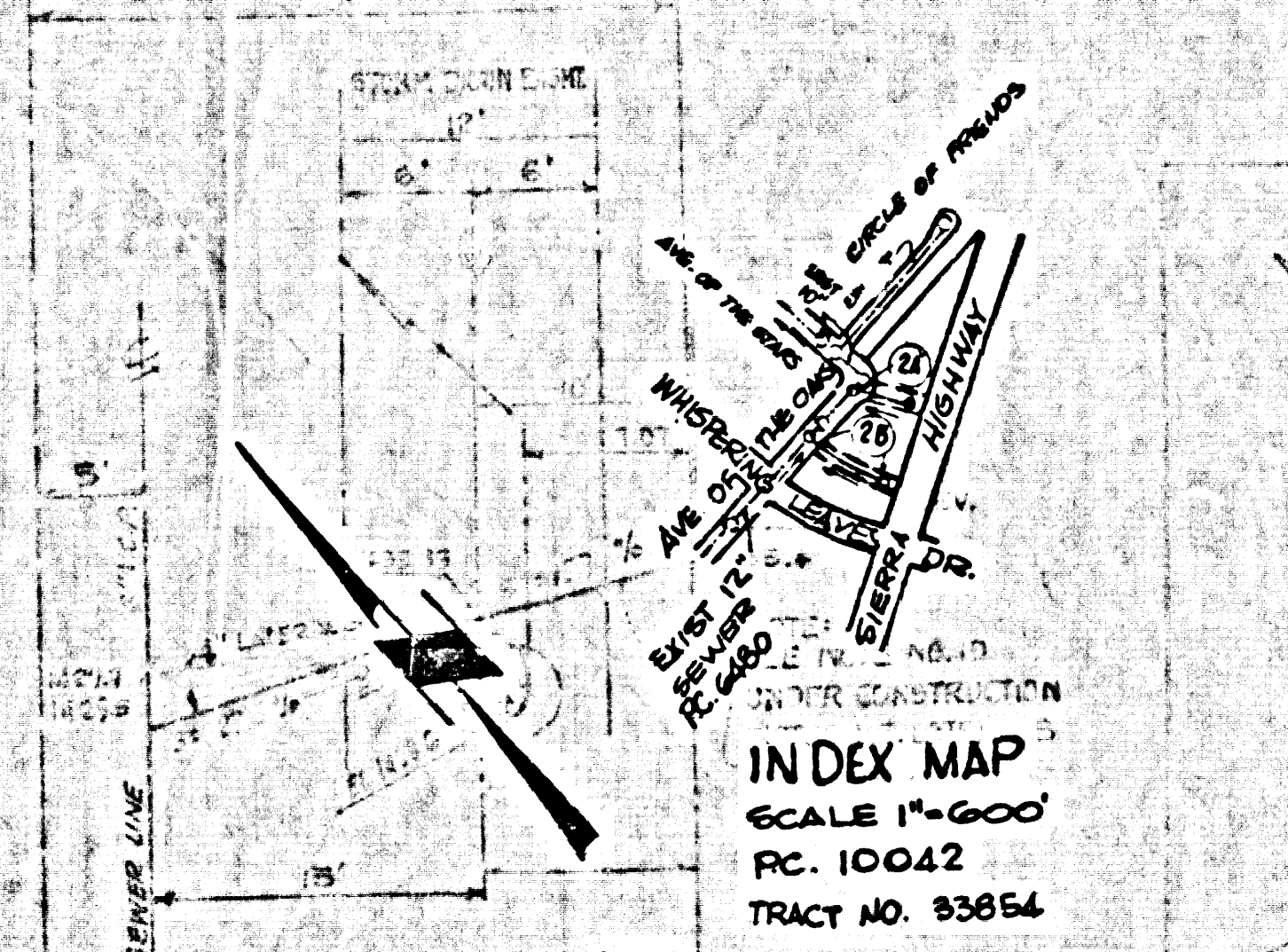
ANDEL ENGINEERING CO.
 BY: *Ed. Bolde*
 REG. C. E. No. 10533

50987

B.M. BL 2891 ELEV. 1447.297
 RD. LEFT BENCH MARK TAG N CATCH BASIN
 WHISPERING LEAVES DR. 1 FT. W. B.C.R. @ N.W.
 COR. SIERRA HWY. & WHISPERING LEAVES DR. 76' W. 1'
 20' S. CL. INT. NEWHALL QUAD 1972

SPECIAL BACKFILL IN EASEMENT CONSTRUCTION
 A. BACKFILL TRENCH AND REPLACE OTHER EARTH SO
 AS TO ACHIEVE THE NATURAL OR FINISHED GRADES
 AND SLOPES SHOWN ON GRADING PLAN APPROVED
 FOR THIS DEVELOPMENT BY THE BUILDING AND
 SAFETY DIVISION.
 B. ALL BACKFILL AND EARTH REPLACED SHALL BE
 COMPACTED TO A MINIMUM OF 90% OF MAXIMUM
 DENSITY FOR A S.T.M. STANDARD METHOD OF
 TEST D 698-57T AS MODIFIED ACCEPTABLE
 CERTIFICATION OF SUCH CONSTRUCTION SHALL BE
 SUBMITTED TO THE ENVIRONMENTAL DEVELOP-
 MENT DIVISION.

GENERAL NOTES:
 1. ELEVATIONS ARE IN FEET ABOVE U.S.C. & G.S. SEA LEVEL DATUM OF 1929.
 2. NO REVISIONS SHALL BE MADE IN THESE PLANS WITHOUT THE APPROVAL OF THE COUNTY ENGINEER.
 3. NO REPRESENTATIVE OF THE COUNTY ENGINEER WILL BE ON PLANS AND PROVEE. GRADE POINTS FOR TOP OF
 CURBS, CENTER LINE OF STREETS, OR CENTER LINE OF ALLEYS ARE SHOWN BY CIRCLES ON PROFILES. AT ALL POINTS BETWEEN DESIGNATED
 POINTS THE GRADE SHALL BE ESTABLISHED SO AS TO CONFORM TO A STRAIGHT LINE DRAWN BETWEEN SAID DESIGNATED
 POINTS.
 4. THE PRIVATE ENGINEER SHALL FURNISH THE COUNTY ENGINEER WITH GRADE SHEETS AND STATIONING FOR ALL HOUSE LATERALS
 AND "Y" OR "T" BRANCHES AND SHALL PROVIDE STAKES FOR THESE AT THEIR PROPER LOCATIONS WITH SETTING NUMBER
 BARBERS. ALL HOUSE LATERALS SHALL BE CONSTRUCTED IN A STRAIGHT ALIGNMENT AT RIGHT ANGLES FROM THE MAIN LINE SEWER
 EXCEPT AS SHOWN ON THE PLANS. HOUSE LATERALS FROM CHIMNEYS SHALL NOT HAVE AN ANGLE OF LESS THAN 45° WITH THE
 MAIN LINE SEWER. ANY CHANGE IN ALIGNMENT SHALL BE REQUESTED BY WRITING BY THE PRIVATE ENGINEER.
 5. THE PRIVATE ENGINEER SHALL FURNISH THE HOUSE LATERAL DEPTH AT THE PROPERTY LINE BELOW THE TOP OF CURB ELEVATION
 FOR EACH HOUSE LATERAL ON THE GRADE SHEET.
 6. BEFORE WORK CAN BE STARTED, THE CONTRACTOR MUST OBTAIN A PERMIT TO EXCAVATE IN COUNTY STREETS FROM THE L.A. COUNTY
 ROAD DEPT., DISTRICT OFFICE NO. 5, 120 SOUTH SPRING STREET, LOS ANGELES, CALIFORNIA. PERMIT NO. 1567/1982/10042
 7. IF WORK IS TO BE DONE IN A STATE HIGHWAY, A PERMIT MUST BE OBTAINED FROM THE STATE OF CALIFORNIA, DIVISION OF HIGH-
 WAYS, 1200 SOUTH SPRING STREET, LOS ANGELES, CALIFORNIA.
 8. APPROVAL OF THIS PLAN BY THE COUNTY OF LOS ANGELES DOES NOT CONSTITUTE A REPRESENTATION AS TO THE ACCURACY OF THE
 LOCATION OF OR THE EXISTENCE OR NON-EXISTENCE OF ANY UNDERGROUND UTILITY PIPE, OR STRUCTURE WITHIN THE LIMITS OF
 THIS PROJECT. THIS NOTE APPLIES TO ALL PAGES.
 9. REFER TO SECTION 110.01 OF THE STANDARD SPECIFICATIONS REGARDING SAFETY SIGNALS.
 10. PRIOR TO THE ISSUANCE OF THE REQUIRED SEWER CONSTRUCTION PERMIT, THE CONTRACTOR
 SHALL OBTAIN AND FILE WITH THE COUNTY ENGINEER COPIES OF A PERMIT
 TO EXCAVATE IN COUNTY STREETS FROM THE LOS ANGELES
 COUNTY ROAD DEPARTMENT, A PERMIT FOR EXCAVATION
 AND TRENCHES FROM THE STATE OF CALIFORNIA, DIVISION
 OF INDUSTRIAL SAFETY AND A CERTIFICATE OF WORKERS
 COMPENSATION INSURANCE WITH THE DEPARTMENT OF
 COUNTY ENGINEER 550 SOUTH VERMONT AVENUE, LOS
 ANGELES, CALIFORNIA 90010. THESE PERMITS MUST BE
 OBTAINED 30 DAYS PRIOR TO CANCELLATION OF POLICY.

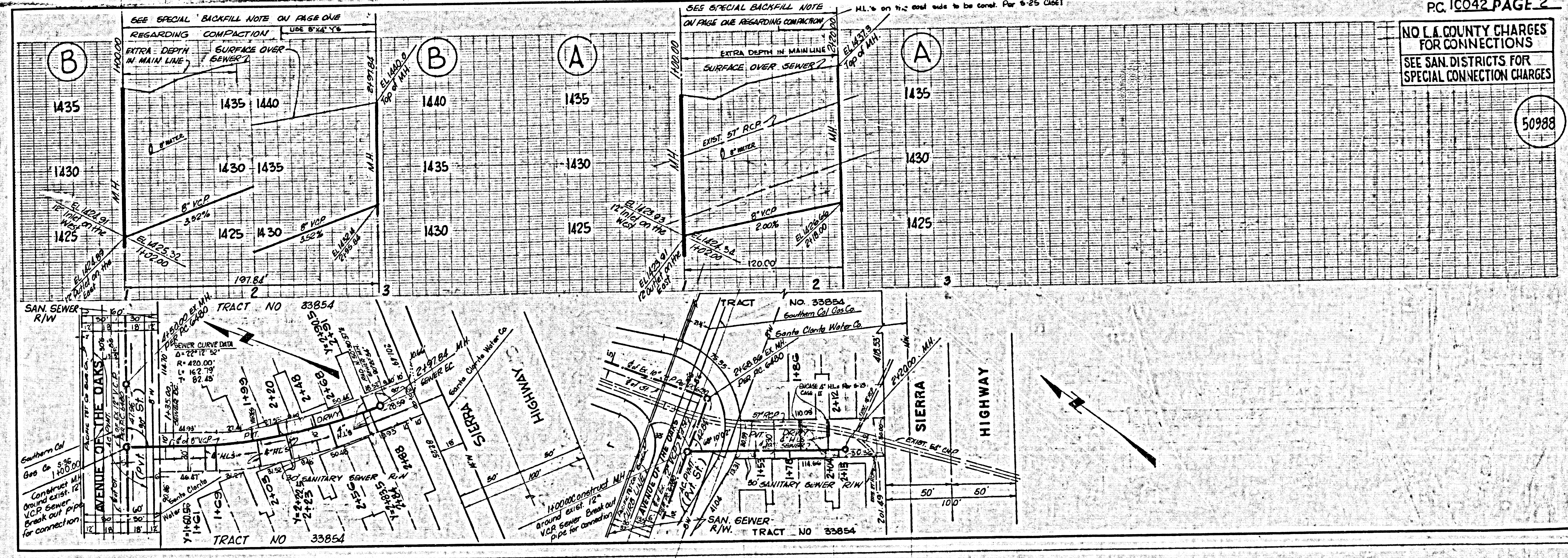


NO CONNECTION FOR THE DISPOSAL OF INDUSTRIAL WASTES
 SHALL BE MADE TO SEWERS SHOWN ON THESE DRAWINGS UNLESS
 A PERMIT FOR INDUSTRIAL WASTE WATER DISCHARGE HAS BEEN
 ISSUED BY THE SANITATION DISTRICTS FOR SAID CONNECTION.
 BEFORE BREAKING INTO OR CONSTRUCTION ON A COUNTY
 HIGHWAY DISTRICT SEWER AND PRIOR TO FINAL ACCEPTANCE
 OF THE PROJECT SANITATION DISTRICT INSPECTOR SHALL BE
 NOTIFIED BY PHONE AND 48 HOURS BEFORE THAT REQUIRED INSPECTION
 CAN BE MADE.

THE FOLLOWING LATEST REVISED STANDARD PLANS ON FILE IN THE OFFICE OF THE COUNTY ENGINEER SHALL APPLY IN THE CON-
 STRUCTION OF THIS PROJECT.

LEGEND	5-1
MINIMUM PUBLIC SAFETY REQUIREMENTS	5-2
BRICK MANHOLE	5-3
STANDARD MANHOLE STEP	5-17
BIDDING FOR SEWER PIPE	5-39
CRACKING AND ENCASING	5-39
WYE ON THE SUPPORT	5-39
ALUMINUM FRAMES WRITE	5-39
ACCESSING MANHOLE FRAME AND COVER	5-39
NON-REINFORCED PRECAST CONCRETE MANHOLE	5-39
SPECIAL HOUSE LATERALS	5-26

COUNTY OF LOS ANGELES, CALIFORNIA
 STYLOHEN J. KODICE, COUNTY ENGINEER
 WALTER E. GARRISON, CHIEF ENGINEER
 APPROVED: *Michael Murphy 4-1-82* APPROVED: *Frank R. Davis 4/1/82*
 CHECKED: *Ralph David Siewert 4/1/82*
 REG. C. E. NO. 16983
 SANTA CLARITA VALLEY BLDG. DIST. 82



PC 10042 PAGE 2
 NO L.A. COUNTY CHARGES
 FOR CONNECTIONS
 SEE SAN. DISTRICTS FOR
 SPECIAL CONNECTION CHARGES

50988