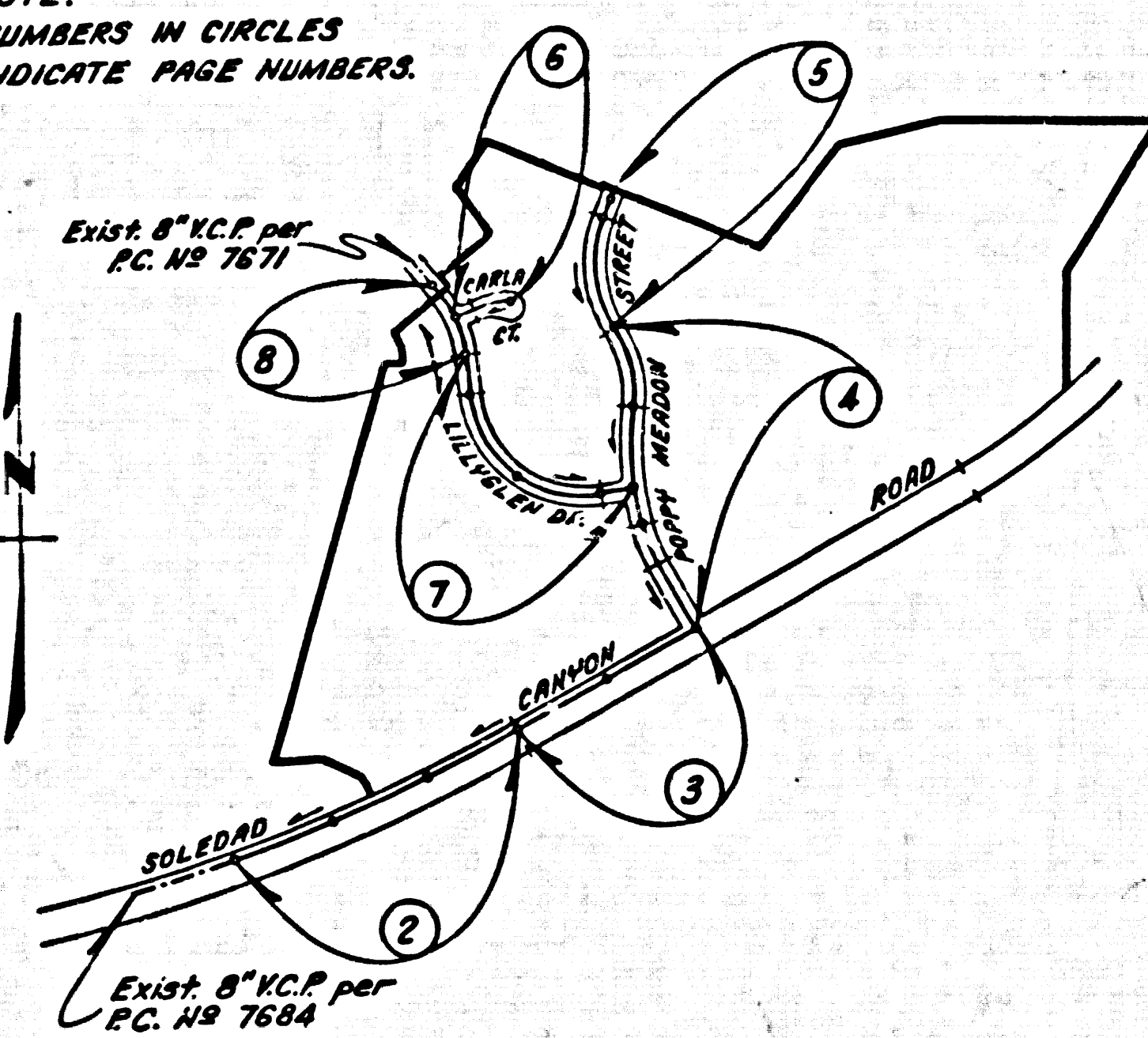


B.M. CL 5003 ELEV. 1605.585
 ROAD TAB IN N'LY CB 4' W'LY BCR @
 NW'LY COR SOLEDAD CANYON RD @
 FLOWER PARK DR 42' NO 4' 48' W C/L INT.
 NEWHALL QUAD. 1978

NOTE:
 NUMBERS IN CIRCLES
 INDICATE PAGE NUMBERS.



INDEX MAP
 P.C. NO 10061
 SCALE: 1"=600'
 TRACT NO 34820

NO CONNECTION FOR THE DISPOSAL OF INDUSTRIAL WASTES SHALL BE MADE TO SEWERS SHOWN ON THESE DRAWINGS UNTIL A PERMIT FOR INDUSTRIAL WASTEWATER DISCHARGE HAS BEEN ISSUED BY THE SANITATION DISTRICTS FOR SAID CONNECTION.

BEFORE BREAKING INTO OR CONSTRUCTION OF A COUNTY SANITATION DISTRICT SEWER AND PRIOR TO FINAL ACCEPTANCE OF THE PROJECT, SANITATION DISTRICT INSPECTOR SHALL BE NOTIFIED BY PHONE - 962-8605, 628-5281 SO THAT REQUIRED INSPECTION CAN BE MADE.

CONSTRUCTION NOTES: (CONT.)

16. WYE BRANCHES MUST BE USED FOR CONNECTIONS TO MAIN LINE SEWER IF A.B.S.C.P. IS USED.
17. ALL JOINTS BETWEEN CAST IRON PIPE AND A.B.S.C.P. SHALL BE MADE WITH APPROVED FITTINGS.
18. FULL COMPLIANCE WITH PART 16 OF THE SPECIAL PROVISIONS IS REQUIRED FOR THE INSTALLATION OF A.B.S.C.P. PIPE AND A.B.S.C.P. SHALL MAINTAIN LATERALS.
19. MANHOLE WINTER STOP BASKETS AND CLEANING ARE REQUIRED FOR THE CONNECTION OF A.B.S.C.P. COMPPOSITE PIPE TO EXISTING 8" STRUCTURES.
20. A.B.S.C.P. SHALL HAVE MUST BE USED FOR WYE AND BRUSH LATERAL CONNECTIONS TO A.B.S.C.P. COMPOSITE MANHOLE SEWER PIPE.
21. 8" DEGREE REFLECTION COEFFICIENTS SHOULD BE USED TO ACCOMPLISH RADIUS OF CURVATURE LONG THAN 300'.
22. A.B.S.C.P. COMPOSITE PIPE SHALL BE BEADED IN CONFORMANCE WITH THE TABLE IN SECTION 8-51 OF PART 16 OF SPECIAL PROVISIONS.
23. PRIOR TO CONNECTIONS THE LINE MUST BE BACKCUT OFF AND RANDED AND INSPECTED BY NEWHALL COUNTY WATER DISTRICT.

Double Scale

PRIVATE ENGINEER'S
 NOTICE TO CONTRACTOR

THE EXISTENCE AND LOCATION OF ANY UNDERGROUND UTILITY PIPES OR STRUCTURES SHOWN ON THESE PLANS ARE OBTAINED BY A SEARCH OF THE AVAILABLE RECORDS TO THE BEST OF OUR KNOWLEDGE. THERE ARE NO EXISTING UTILITIES EXCEPT AS SHOWN ON THIS MAP. THE CONTRACTOR IS REQUIRED TO TAKE PRECAUTIONARY MEASURES TO PROTECT THE UTILITY LINES SHOWN AND ANY OTHER LINES NOT OF RECORD OR NOT SHOWN ON THIS DRAWING.

GENERAL NOTES:

1. ELEVATIONS ARE IN FEET ABOVE U.S.C. & G.S. MEAN LEVEL DATUM OF 1929.
2. NO REVISIONS SHALL BE MADE IN THESE PLANS WITHOUT THE APPROVAL OF THE COUNTY ENGINEER.
3. NO REPRESENTATIVE OF THE COUNTY ENGINEER WILL SURVEY OR LAY OUT ANY PORTION OF THE WORK.
4. GRADES TO WHICH THIS IMPROVEMENT IS TO BE CONSTRUCTED ARE SHOWN ON PLANS AND PROFILES. GRADE POINTS FOR TOP OF CURBS, CENTER LINE OF STREETS, OR CENTER LINE OF ALLEYS ARE SHOWN BY CIRCLES ON PROFILES. AT ALL POINTS BETWEEN DESIGNATED POINTS THE GRADE SHALL BE ESTABLISHED SO AS TO CONFORM TO A STRAIGHT LINE DRAWN BETWEEN SAID DESIGNATED POINTS.
5. THE PRIVATE ENGINEER SHALL FURNISH THE COUNTY ENGINEER WITH GRADE SHEETS AND STATIONING FOR ALL HOUSE LATERALS AND "ON" BRANCHES AND SHALL PROVIDE STAKES FOR THEM AT THEIR PROPOSED LOCATIONS WITH THE STATIONING PLAINLY MARKED. ALL HOUSE LATERALS SHALL BE CONSTRUCTED IN A STRAIGHT ALIGNMENT AT POINT ANGLES FROM THE MAIN LINE SEWER EXCEPT AS SHOWN ON THE PLANS. HOUSE LATERALS FROM CHIMNEYS SHALL NOT HAVE AN ANGLE OF LESS THAN 45° WITH THE MAIN LINE SEWER. ANY CHANGE IN ALIGNMENT SHALL BE RECORDED IN WRITING BY THE PRIVATE ENGINEER.
6. THE PRIVATE ENGINEER SHALL FURNISH THE HOUSE LATERAL DEPTH AT THE PROPERTY LINE BELOW THE TOP OF CURB ELEVATION FOR EACH HOUSE LATERAL ON THE GRADE SHEET.
7. BEFORE WORK CAN BE STARTED, THE CONTRACTOR MUST OBTAIN A PERMIT TO EXCAVATE IN COUNTY STREETS FROM THE L.A. COUNTY ROAD DEPT., DISTRICT OFFICE NO. 3 AND PAY A FEE TO THE COUNTY ENGINEER, 250 S. WILSON, ROOM 405, 12th STREET, LOS ANGELES, TO COVER THE COST OF CONSTRUCTION INSPECTION AND RECORD PLANS.
8. IF WORK IS TO BE DONE IN A STATE HIGHWAY, A PERMIT MUST BE OBTAINED FROM THE STATE OF CALIFORNIA, DIVISION OF HIGHWAYS, 130 SOUTH SPRING STREET, LOS ANGELES, CALIFORNIA.
9. APPROVAL OF THIS PLAN BY THE COUNTY ENGINEER DOES NOT CONSTITUTE A REPRESENTATION AS TO THE ACCURACY OF THE LOCATION OF OR THE EXISTENCE OR NON-EXISTENCE OF ANY UNDERGROUND UTILITY PIPE, OR STRUCTURE WITHIN THE LIMITS OF THE PROJECT. THIS NOTE APPLIES TO ALL PAGES.
10. REFER TO SECTION 7.10.41 OF THE STANDARD SPECIFICATIONS.
11. PRIOR TO THE ISSUANCE OF THE REQUIRED SEWER CONSTRUCTION PERMIT, THE CONTRACTOR SHALL OBTAIN AND FILE WITH THE COUNTY ENGINEER COPIES OF A PERMIT TO EXCAVATE IN COUNTY STREETS FROM THE LOS ANGELES COUNTY ROAD DEPARTMENT, A PERMIT FOR EXCAVATION AND TRENCHES FROM THE STATE OF CALIFORNIA, DIVISION OF INDUSTRIAL SAFETY AND A CERTIFICATE OF WORKERS COMPENSATION INSURANCE WITH THE DEPARTMENT OF COUNTY ENGINEER, 800 SOUTH WILSON, ROOM 405, LOS ANGELES, CALIFORNIA 90008, NAMED AS THE CERTIFICATE HOLDER TO BE NOTIFIED 30 DAYS PRIOR TO CANCELLATION OF POLICY.

CONSTRUCTION NOTES:

1. WORK SHALL BE CONSTRUCTED ACCORDING TO THE STANDARD SPECIFICATIONS FOR PUBLIC WORKS CONSTRUCTION (1982 EDITION) WITH 1983 SUPPLEMENT IN COUNTY STREETS FROM THE LOS ANGELES COUNTY ROAD DEPARTMENT, 250 S. WILSON, ROOM 405, 12th STREET, LOS ANGELES, CALIFORNIA 90008.
2. THE CONTRACTOR SHALL NOTIFY THE ENVIRONMENTAL DEVELOPMENT DIVISION BY TELEPHONE, 728-2189, AT LEAST TWENTY-FOUR HOURS BEFORE STARTING ANY WORK UNDER THIS CONTRACT.
3. HOUSE LATERALS TO BE CONSTRUCTED WITH INVERTS AT PROPERTY LINE 6 FEET BELOW CURB GRADE EXCEPT AS NOTED.
4. WYE OR TEE BRANCHES MAY BE USED FOR CONNECTIONS TO MAINLINE SEWERS EXCEPT AS NOTED.
5. ALL STRUCTURES SHALL BE EITHER BRICK MANHOLES PER 8-50 OR PRECAST CONCRETE MANHOLES PER 8-50, EXCEPT AS NOTED.
6. PROVIDE STAKES ON THE PROPERTY LINE OR PROPERTY LINES PRODUCED AT RIGHT ANGLES TO THE SEWER LINE AT THE CENTER LINE OF EACH MANHOLE.
7. MANHOLE TOPS IN UNIMPROVED AREAS OF WAY TO BE SIX INCHES ABOVE FINISHED GRADE.
8. WITHIN CLAY PIPE JOINTS SHALL BE TYPE "D" OR "B" PER STANDARD SPECIFICATIONS SECTION 308-2.
9. IF A POWER POLE IS WITHIN THREE FEET OF THE SEWER, THE SEWER SHALL BE ENCASED, PER 8-50, CASE 4, TWO FEET ON EACH SIDE FROM THE POINT OF INTERFERENCE.
10. IF DURING THE COURSE OF CONSTRUCTION IT IS DETERMINED THAT THERE IS LESS THAN FOUR FEET OF COVER OVER THE TOP OF A MAIN LINE OR BRUSH LATERAL, 8" OR 6" A.B.S.C.P. SEWER WHICH IS NOT INDICATED ON THE PLANS, THE PIPE SHALL BE ENCASED PER 8-50, CASE 2, UNLESS OTHERWISE APPROVED BY THE COUNTY ENGINEER.
11. ALL JOINTS BETWEEN CAST IRON PIPE AND WITHIN CLAY PIPE SHALL BE MADE WITH A RUBBER BLEED JOINT, TYPE "C" OR "D", WITH BLEEDING IF NECESSARY PER STANDARD SPECIFICATIONS, SECTION 308-3.
12. SEWERS TO BE TESTED FOR LEAKAGE PER SECTION 308-1.4 OF THE STANDARD SPECIFICATIONS AND SPECIAL PROVISIONS.
13. RESURFACE ALL TRENCHES WITHIN PAVED AREAS TO MEET L.A. COUNTY ROAD DEPT. OR CALIFORNIA STATE HIGHWAY REQUIREMENTS IN ACCORDANCE WITH PERMITS.
14. FULL COMPLIANCE WITH SECTION 308-3.5 OF THE SPECIAL PROVISIONS WILL BE REQUIRED FOR BACKFILL IN STREETS. CERTIFICATION OF BACKFILL COMPACTION AND SAND EQUIVALENTS BY A QUALIFIED, REGISTERED TESTING LABORATORY SHALL BE PROVIDED BY THE PERMITTEE PRIOR TO THE ISSUANCE OF A CERTIFICATE OF PARTIAL ACCEPTANCE.
15. SPECIAL BACKFILL IN BASEMENT CONSTRUCTION (A) BACKFILL TRENCH AND REPLACE OTHER EARTH SO AS TO ACHIEVE THE NATURAL OR FINISHED GRADES AND SLOPES SHOWN ON THE DRAWING PLAN APPROVED FOR THE DEVELOPMENT BY THE BUILDING AND SAFETY DIVISION. (B) ALL BACKFILL AND EARTH REPLACED SHALL BE COMPACTED TO A MINIMUM OF 90% OF MAXIMUM DENSITY PER A.S.T.M. STD. METHOD OF TEST D9597 AS MODIFIED. ACCEPTABLE CERTIFICATION OF SUCH COMPACTION SHALL BE SUBMITTED TO THE ENVIRONMENTAL DEVELOPMENT DIVISION.

SANITARY SEWERS

TO BE CONSTRUCTED IN

TRACT NO 34820

PRIVATE CONTRACT NO. 10061
 Index C-A-75
 W.S. 62

SCALE: VERT. 1"=6' HORIZ. 1"=60' 1982

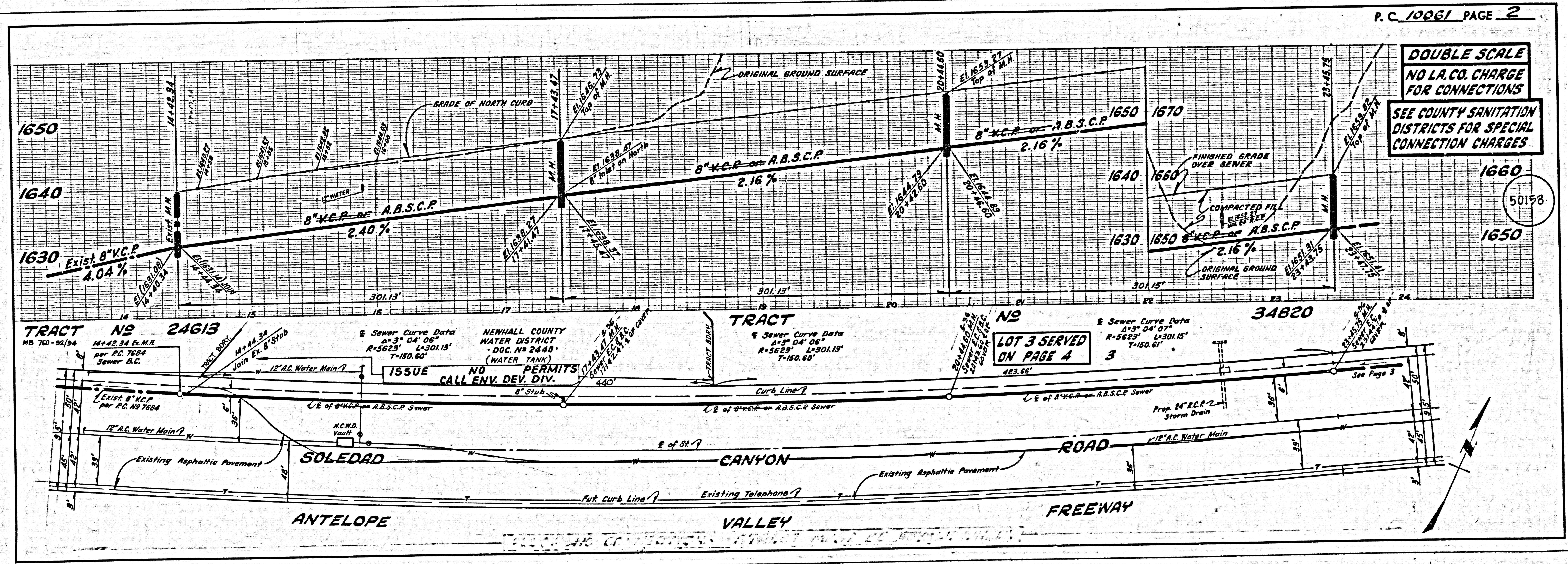
PREPARED IN THE OFFICES OF
 ENGINEERING SERVICE CORPORATION
 5015 BOSTON, PASADENA, CALIF. 91104
 CULVER CITY, CA. 90230 TEL: (818) 417-7888
 BY: [Signature] REG. C. E. No. 13055

THE FOLLOWING LATEST REVISED STANDARD PLANS ON FILE IN THE OFFICE OF THE COUNTY ENGINEER SHALL APPLY IN THE CONSTRUCTION OF THIS PROJECT.

LEGEND	8-1
MINIMUM PUBLIC SAFETY REQUIREMENTS	8-2
BRICK MANHOLE	8-3
STANDARD MANHOLE ETP	8-7
ROOFING FOR SEWER PIPE	8-8
CHASING AND INCASING	8-9
WYE OR TEE SUPPORT	8-10
ALUMINUM TRENCH WITHE	8-11
WOODING MANHOLE FRAME AND COVER	8-12
NON-REINFORCED PRECAST CONCRETE MANHOLE	8-13

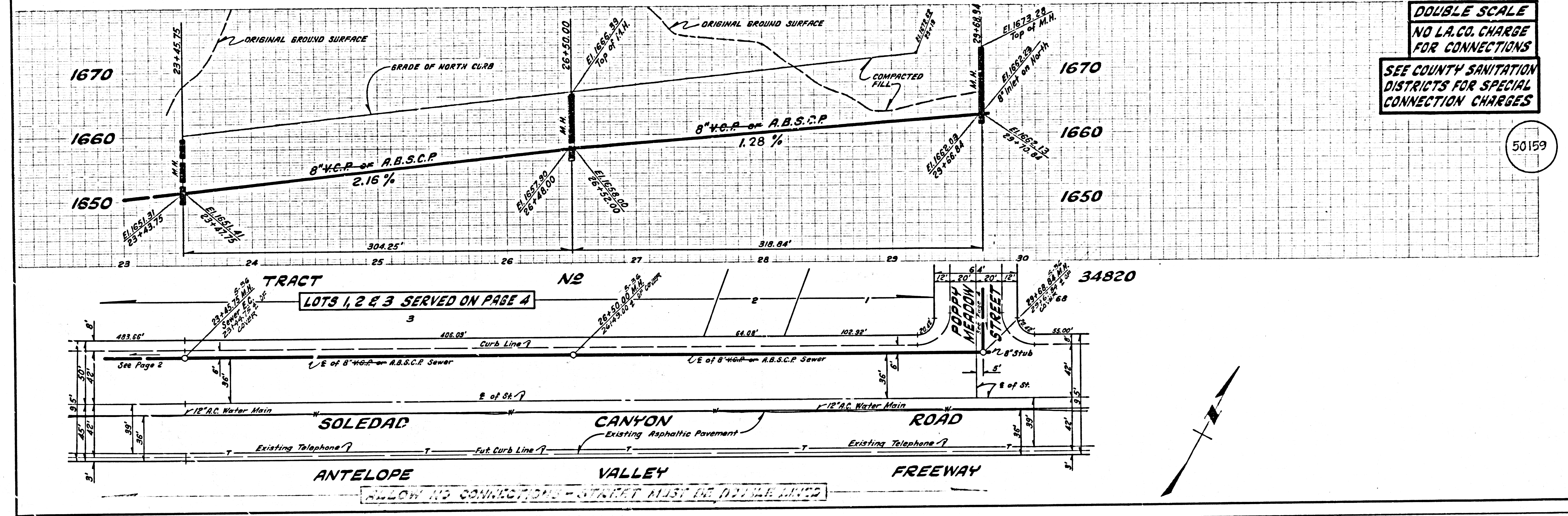
COUNTY OF LOS ANGELES, CALIFORNIA

STEPHEN J. KOONCE, COUNTY ENGINEER
 WALTER E. GARRISON, CHIEF ENGINEER
 CO. SAN. DIST. NO. 28
 APPROVED: [Signature] DATE: 5/13/82
 APPROVED: [Signature] DATE: 5/13/82
 CHECKED: [Signature] DATE: 5/13/82
 FOR THE NEWHALL COUNTY WATER DISTRICT
 APPROVED BY: [Signature] DATE: 5/13/82
 CHIEF ENGINEER AND GENERAL MANAGER
 NEWHALL COUNTY WATER DISTRICT



DOUBLE SCALE
NO L.A. CO. CHARGE
FOR CONNECTIONS
SEE COUNTY SANITATION
DISTRICTS FOR SPECIAL
CONNECTION CHARGES

50159

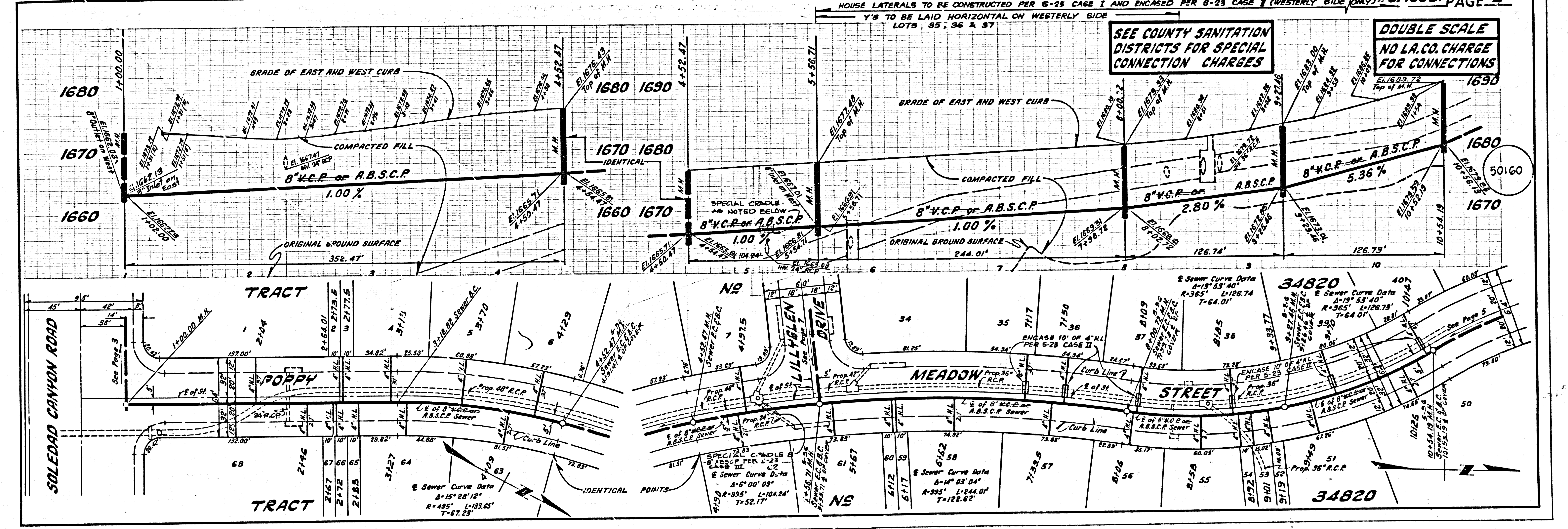


5
13001 29 0584E 24 7287

SEE COUNTY SANITATION
DISTRICTS FOR SPECIAL
CONNECTION CHARGES

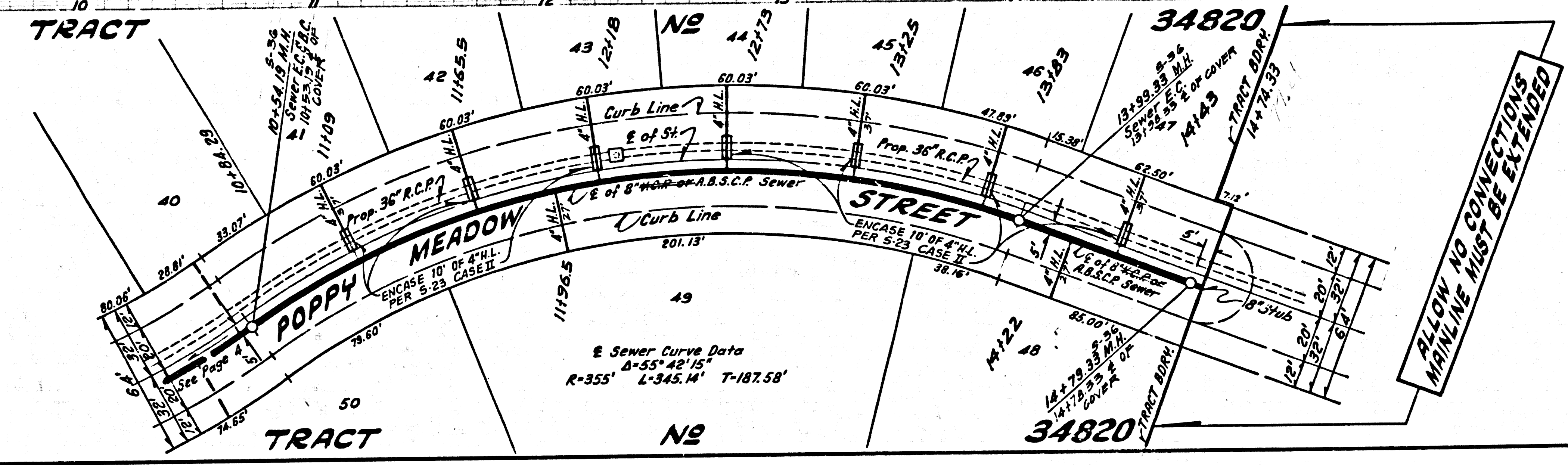
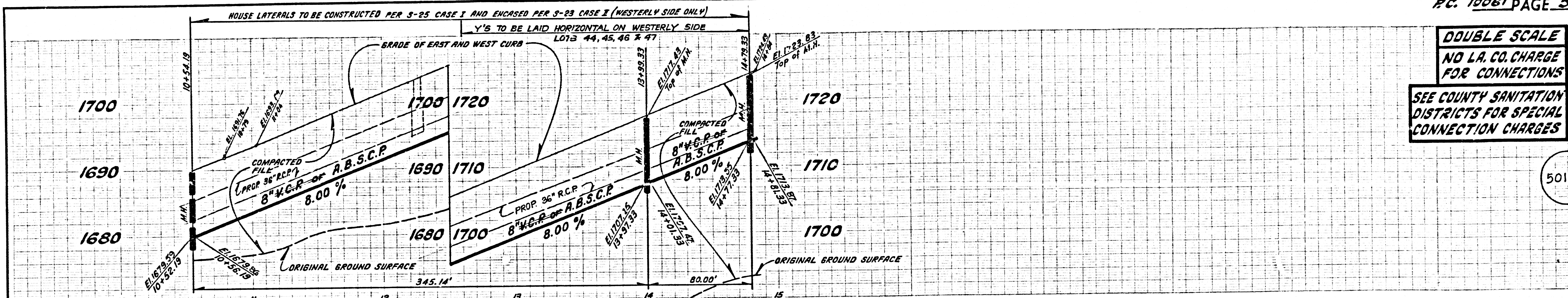
DOUBLE SCALE
NO L.A. CO. CHARGE
FOR CONNECTIONS

50160



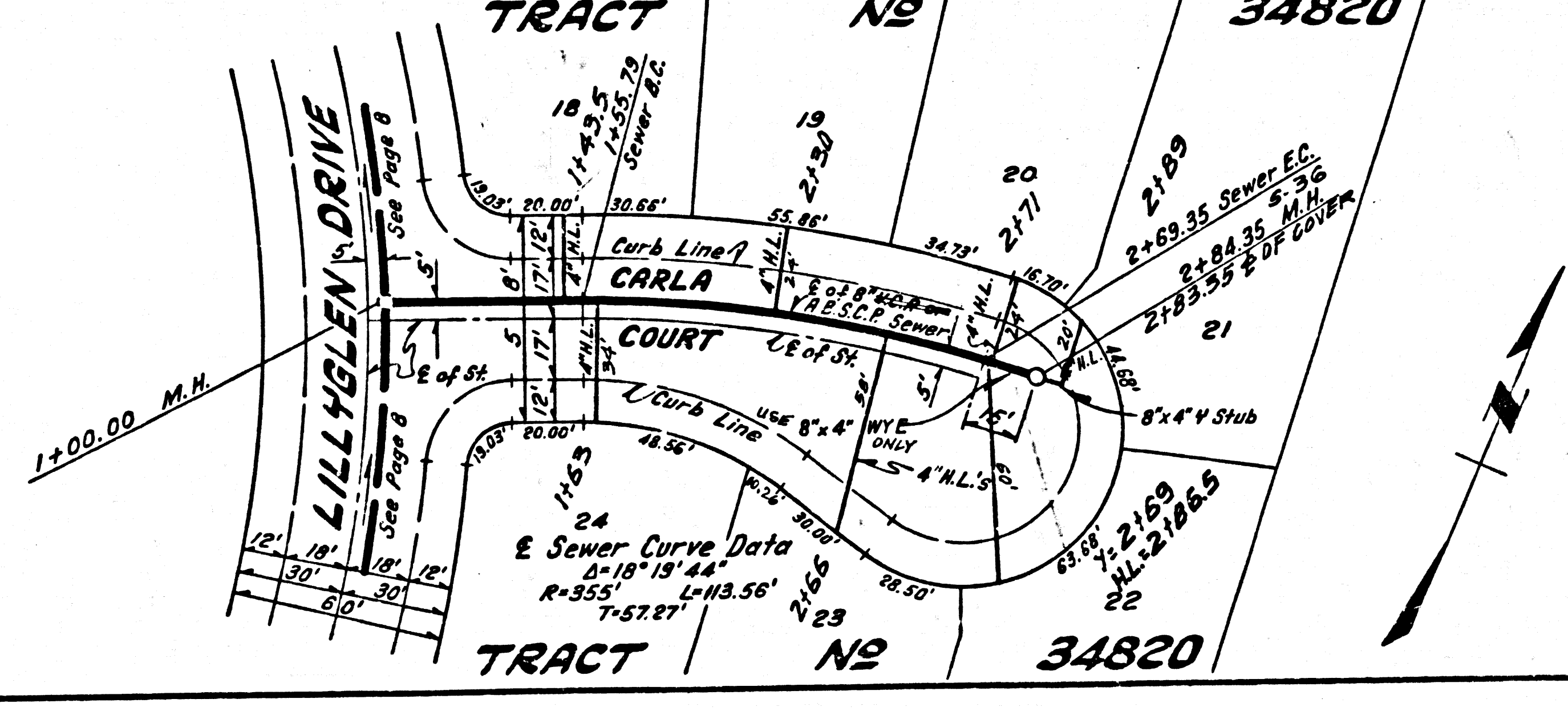
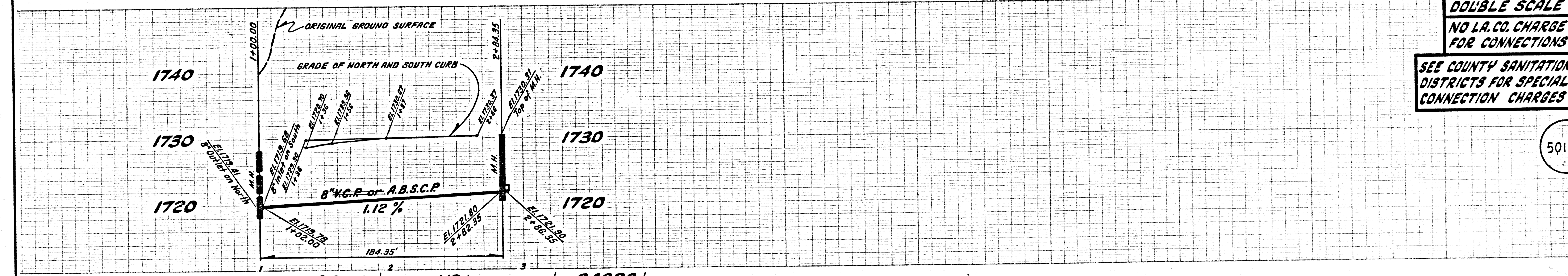
DOUBLE SCALE
NO L.A. CO. CHARGE
FOR CONNECTIONS
SEE COUNTY SANITATION
DISTRICTS FOR SPECIAL
CONNECTION CHARGES

50161

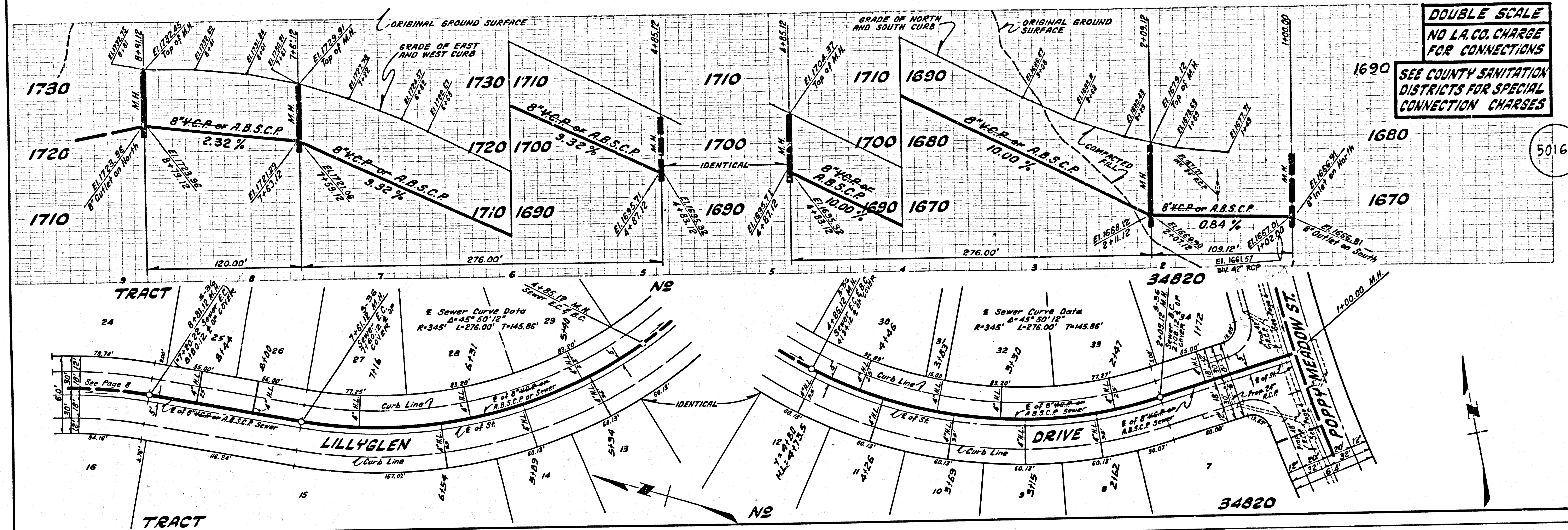


DOUBLE SCALE
NO L.A. CO. CHARGE
FOR CONNECTIONS
SEE COUNTY SANITATION
DISTRICTS FOR SPECIAL
CONNECTION CHARGES

50162

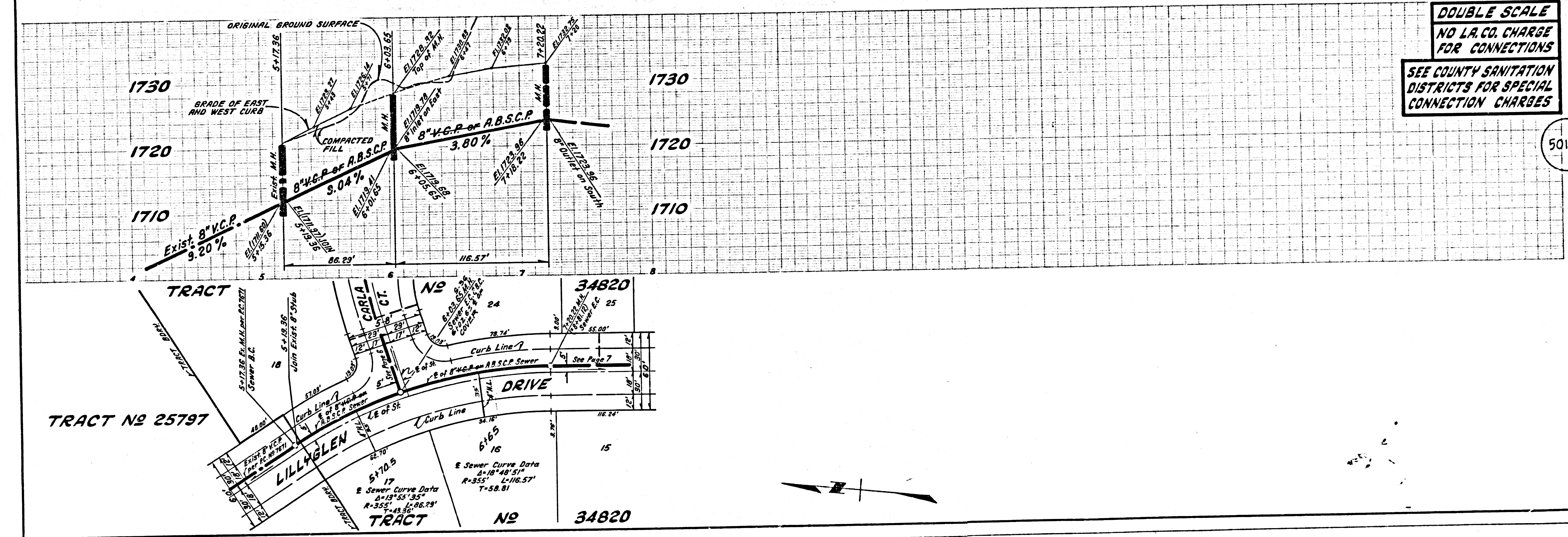


18001 29 USBAE 24 TRACT



DOUBLE SCALE
 NO L.A. CO. CHARGE
 FOR CONNECTIONS
 SEE COUNTY SANITATION
 DISTRICTS FOR SPECIAL
 CONNECTION CHARGES

50163



DOUBLE SCALE
 NO L.A. CO. CHARGE
 FOR CONNECTIONS
 SEE COUNTY SANITATION
 DISTRICTS FOR SPECIAL
 CONNECTION CHARGES

50164