

TO BE CONSTRUCTED IN
TRACT No. 32945

PRIVATE CONTRACT NO. 10062

C-A-80
 W.S. 82

2 SHEETS; 4 PAGES

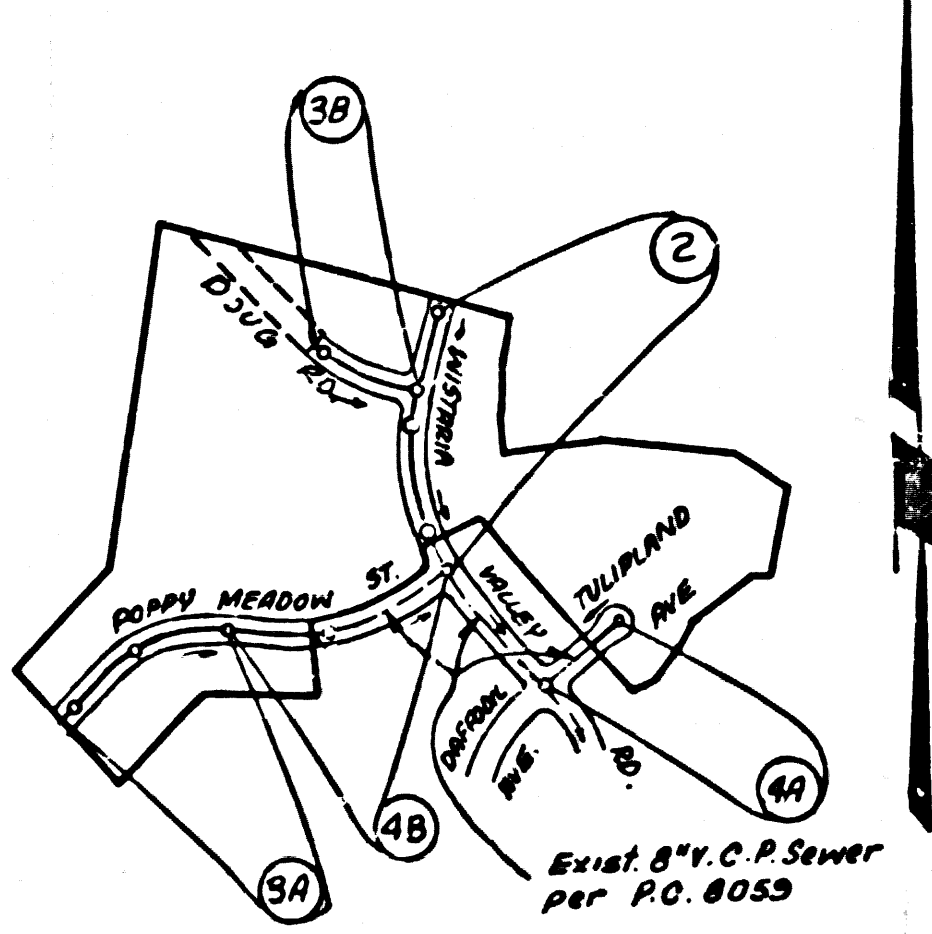
50018

MAY, 1982

ENGINEERING SERVICE CORPORATION
 6017 BRISTOL PARKWAY, CULVER CITY, CALIFORNIA 90230 (213) 417-7999

B.M. BL. 3777 ELEV. 1630.793
 L.A. FC TIES IN W/END SPOR CONC. HDWL. #440339
 16 FT S/D SINK TRACKS + 0.85 MI. E/D OVERPASS
 OVER OAK SPRINGS CH. RD.
 NEWHALL QUAD. 19 72

DOUBLE SCALE



INDEX MAP
 SCALE: 1" = 600'

P.C. No 10062
 TRACT No 32945

NOTE: NUMBERS IN CIRCLES INDICATE PAGE NUMBERS

NO CONNECTION FOR THE DISPOSAL OF INDUSTRIAL WASTES SHALL BE MADE TO SEWERS SHOWN ON THESE DRAWINGS UNTIL A PERMIT FOR INDUSTRIAL WASTEWATER DISCHARGE HAS BEEN ISSUED BY THE SANITATION DISTRICTS FOR SAID CONNECTION.

BEFORE BREAKING INTO OR CONSTRUCTION ON A COUNTY SANITATION DISTRICT SEWER AND PRIOR TO FINAL ACCEPTANCE OF THE PROJECT, SANITATION DISTRICT INSPECTOR SHALL BE NOTIFIED BY PHONE - 462-8669, 638-1461 SO THAT REQUIRED INSPECTION CAN BE MADE.

- CONSTRUCTION NOTES (CONT.):**
12. HAVE BRANCHES ONLY MADE BY CONNECTIONS TO MAINLINE SEWER IF AS S.C.A. 14.003.
 13. ALL JOINTS BETWEEN CAST IRON PIPE AND A.B.C.P. SHALL BE MADE WITH APPROVED FITTINGS.
 14. FULL COMPLIANCE WITH PART 85 OF SPECIAL PROVISIONS IS REQUIRED FOR THE INSTALLATION OF A.B.C.P. COMPOSITE PIPE AND A.B.C.P. SOLID WALL HOUSE LATERALS.
 15. MANHOLE DEPTH FROM FINISHED GRADE AND CLAMPS SHALL BE AS REQUIRED FOR THE CONNECTION OF A.B.C.P. COMPOSITE PIPE TO HOUSE LATERALS.
 16. A.B.C.P. SOLID WALL PIPE MUST BE USED FOR INVE AND HOUSE LATERAL CONNECTIONS TO A.B.C.P. COMPOSITE MAINLINE SEWER PIPE.
 17. 3-DRAWN DEFLECTION DIMENSIONS SHOULD BE USED AS INDICATED IN THE SEWER CURVE DATA IN THIS PLAN SHEET.
 18. SPECIAL BACKFILL IN DEVELOPMENT CONSTRUCTION.
 19. BRICKL TRENCH AND REPLACE UNDER EXIST. SO AS TO MAINTAIN THE NATURAL OR FINISHED GRADE OR SLOPE SHOWN ON THE GRADING PLAN APPROVED FOR THIS DEVELOPMENT BY THE BUILDING AND SAFETY DIVISION.
 20. ALL BRICKL AND EXIST. MANHOLES SHALL BE CONFORMED TO A MINIMUM OF 80% OF STANDARD QUALITY PER 8.01(C). STANDARD METHOD OF CONSTRUCTION SHALL BE MODIFIED, ACCEPTABLE CERTIFICATION OF SUCH CONSTRUCTION SHALL BE SUBMITTED TO THE ENVIRONMENTAL DEVELOPMENT DIVISION.

FOR THE NEWHALL COUNTY WATER DISTRICT
 Approved By: *[Signature]* DATE 6/20/82
 CHIEF ENGINEER AND GENERAL MANAGER
NEWHALL COUNTY WATER DISTRICT

PRIVATE ENGINEER'S NOTICE TO CONTRACTOR

The existence and location of any underground utility pipes or structures shown on these plans are obtained by a search of the available records. To the best of our knowledge there are no existing utilities except as shown on this map.

The Contractor is required to take precautionary measures to protect the utility lines shown and any other lines not of record or not shown on this drawing.

Contractor agrees that he shall assume sole and complete responsibility for job site conditions during the course of construction of this Project, including safety of all persons and property, that this requirement shall apply continuously and not be limited to normal working hours; and that the Contractor shall defend, indemnify and hold the Owner and the Engineer harmless from any and all liability, real or alleged, in connection with the performance of work on this Project, excepting for liability arising from the sole negligence of the Owner or the Engineer.

GENERAL NOTES:

1. ELEVATIONS ARE IN FEET ABOVE U.S.C. & G.S. SEA LEVEL DATUM OF 1929.
2. NO REVISIONS SHALL BE MADE IN THIS PLAN WITHOUT THE APPROVAL OF THE COUNTY ENGINEER.
3. NO DIMENSIONS OF THE COUNTY ENGINEER WILL SURVEY OR LAY OUT ANY PORTION OF THE WORK.
4. GRADES TO WHICH 1% IMPROVEMENT IS TO BE CONSTRUCTED ARE SHOWN ON PLANS AND PROFILES. GRADE POINTS FOR TOP OF CURB, CENTER LINE OF STREETS, OR CENTER LINE OF ALLEYS ARE SHOWN BY CIRCLES ON PROFILES. AT ALL POINTS BETWEEN DESIGNATED POINTS THE GRADE SHALL BE ESTABLISHED SO AS TO CONFORM TO A STRAIGHT LINE DRAWN BETWEEN SAID DESIGNATED POINTS.
5. THE PRIVATE ENGINEER SHALL FURNISH THE COUNTY ENGINEER WITH GRADE SHEETS AND STATIONING FOR ALL HOUSE LATERALS AND "T" OR "Y" BRANCHES AND SHALL PROVIDE STAKES FOR THEM AT THEIR PROPER LOCATIONS WITH STATIONING PLAINLY MARKED. ALL HOUSE LATERALS SHALL BE CONSTRUCTED IN A STRAIGHT ALIGNMENT AT RIGHT ANGLES FROM THE MAIN LINE SEWER EXCEPT AS SHOWN ON THE PLANS. HOUSE LATERALS FROM CHIMNEYS SHALL NOT HAVE AN ANGLE OF LESS THAN 45° WITH THE MAIN LINE SEWER. ANY CHANGE IN ALIGNMENT SHALL BE REQUESTED IN WRITING BY THE PRIVATE ENGINEER.
6. THE PRIVATE ENGINEER SHALL FURNISH THE COUNTY ENGINEER WITH THE HOUSE LATERAL DATA AT THE PROPERTY LINE BELOW THE TOP OF CURB ELEVATION FOR EACH HOUSE LATERAL ON THE HOUSE SHEET.
7. BEFORE WORK CAN BE STARTED, THE CONTRACTOR MUST OBTAIN A PERMIT TO EXCAVATE IN COUNTY STREETS FROM THE L.A. COUNTY ROAD DEPT., DISTRICT OFFICE NO. 5, AND PAY A FEE TO THE COUNTY ENGINEER, 550 S. VERMONT, ROOM 420, TO COVER THE COST OF CONSTRUCTION INSPECTION AND RECORD PLANS.
8. IF WORK IS TO BE DONE IN A STATE HIGHWAY, A PERMIT MUST BE OBTAINED FROM THE STATE OF CALIFORNIA, DIVISION OF HIGHWAYS, 138 SOUTH SPRING STREET, LOS ANGELES, CALIFORNIA.
9. APPROVAL OF THIS PLAN BY THE COUNTY OF LOS ANGELES DOES NOT CONSTITUTE A REPRESENTATION AS TO THE ACCURACY OF THE LOCATION OF OR THE EXISTENCE OR NON-EXISTENCE OF ANY UNDERGROUND UTILITY PIPE, OR STRUCTURE WITHIN THE LIMITS OF THIS PROJECT. THIS NOTE APPLIES TO ALL PAGES.
10. REFER TO SECTION 7-18.1 OF THE STANDARD SPECIFICATIONS, REGARDING SAFETY ORDERS.
11. PRIOR TO THE ISSUANCE OF THE REQUIRED BEFORE CONSTRUCTION PERMIT, THE CONTRACTOR SHALL OBTAIN AND FILE WITH THE COUNTY ENGINEER, COPIES OF A PERMIT TO EXCAVATE IN COUNTY STREETS FROM THE LOS ANGELES COUNTY ROAD DEPARTMENT, A PERMIT TO EXCAVATE IN HIGHWAYS FROM THE STATE OF CALIFORNIA, DIVISION OF INDUSTRIAL SAFETY AND CERTIFICATES OF WORKERS' COMPENSATION INSURANCE WITHIN THE JURISDICTION OF COUNTY ENGINEER, 550 SOUTH VERMONT, ROOM 406, LOS ANGELES CALIFORNIA 90012, NAMED AS THE CERTIFICATE HOLDER TO BE NOTIFIED 30 DAYS PRIOR TO CANCELLATION OF POLICY.

CONSTRUCTION NOTES:

1. WORK SHALL BE CONSTRUCTED ACCORDING TO THE STANDARD SPECIFICATIONS FOR PUBLIC WORKS CONSTRUCTION 1978 EDITION WITH 80% SUPPLEMENT AND COUNTY ENGINEER SPECIAL PROVISIONS FOR THE CONSTRUCTION OF SANITARY SEWERS DATED 5/27/82, 8/27/82 AND SHALL BE PROSECUTED ONLY IN THE PRESENCE OF THE COUNTY ENGINEER.
2. THE CONTRACTOR SHALL NOTIFY THE ENVIRONMENTAL DEVELOPMENT DIVISION BY TELEPHONE 824/708-2266, AT LEAST TWENTY-FOUR HOURS BEFORE STARTING ANY WORK UNDER THIS CONTRACT.
3. HOUSE LATERALS TO BE CONSTRUCTED WITH INVERTS AT PROPERTY LINE & FEET BELOW CURB GRADE EXCEPT AS NOTED.
4. WYE OR TE BRANCHED MAY BE USED FOR CONNECTIONS TO MAINLINE SEWERS EXCEPT AS NOTED.
5. ALL STRUCTURES SHALL BE EITHER BRICK MANHOLES PER 8-3 OR PRECAST CONCRETE MANHOLES PER 1-34, EXCEPT AS NOTED.
6. PROVIDE STAKES ON THE PROPERTY LINE OR PROPERTY LINES PRODUCED AT RIGHT ANGLES TO THE SEWER LINE AT THE CENTER LINE OF EACH MANHOLE.
7. MANHOLE TOPS IN UNIMPROVED RIGHTS OF WAY TO BE SIX INCHES ABOVE FINISHED GRADE.
8. WETTED CLAY PIPE JOINTS MUST BE TYPE "B", OR "C" PER STANDARD SPECIFICATIONS SECTION 306-2.
9. IF A POWER POLE IS WITHIN THREE FEET OF THE SEWER, THE SEWER SHALL BE ENCASED, PER 8-23, CASE II, TWO FEET ON EACH SIDE FROM THE POINT OF INTERFERENCE.
10. IF DURING THE COURSE OF CONSTRUCTION IT IS DETERMINED THAT THERE IS LESS THAN FOUR FEET OF COVER OVER THE TOP OF A MANHOLE OR HOUSE LATERAL, PER 8-23.1.2, THE CONTRACTOR SHALL BE RESPONSIBLE FOR THE PROTECTION OF THE SAME UNLESS OTHERWISE APPROVED BY THE COUNTY ENGINEER.
11. ALL JOINTS BETWEEN CAST IRON PIPE AND WETTED CLAY PIPE SHALL BE MADE WITH A RUBBER SLEEVE JOINT, TYPE "C" OR "D", FIFTH EDITION, IF NECESSARY PER STANDARD SPECIFICATIONS, SECTION 306-2.
12. RESURFACE ALL TERRACES WITHIN PAVED AREAS TO MEET L.A. COUNTY ROAD DEPT. OR CALIFORNIA STATE HIGHWAY REQUIREMENTS IN ACCORDANCE WITH PERMITS.
13. FULL COMPLIANCE WITH SECTION 306-1.8 OF THE SPECIAL PROVISIONS WILL BE REQUIRED FOR BACKFILL IN STREETS. CERTIFICATION OF BACKFILL COMPACTION AND SAND EQUIVALENTS BY A QUALIFIED, REGISTERED TESTING LABORATORY SHALL BE PROVIDED BY THE PERMITTEE PRIOR TO THE ISSUANCE OF A CERTIFICATE OF PARTIAL ACCEPTANCE.
14. A.B.C.P. COMPOSITE PIPE SHALL BE DESIGNED IN CONFORMANCE WITH THE TABLE IN SECTION 8-2.1 OF PART IX OF THE SPECIAL PROVISIONS.

THE FOLLOWING LATEST REVISED STANDARD PLANS ON FILE IN THE OFFICE OF THE COUNTY ENGINEER SHALL APPLY IN THE CONSTRUCTION OF THIS PROJECT:

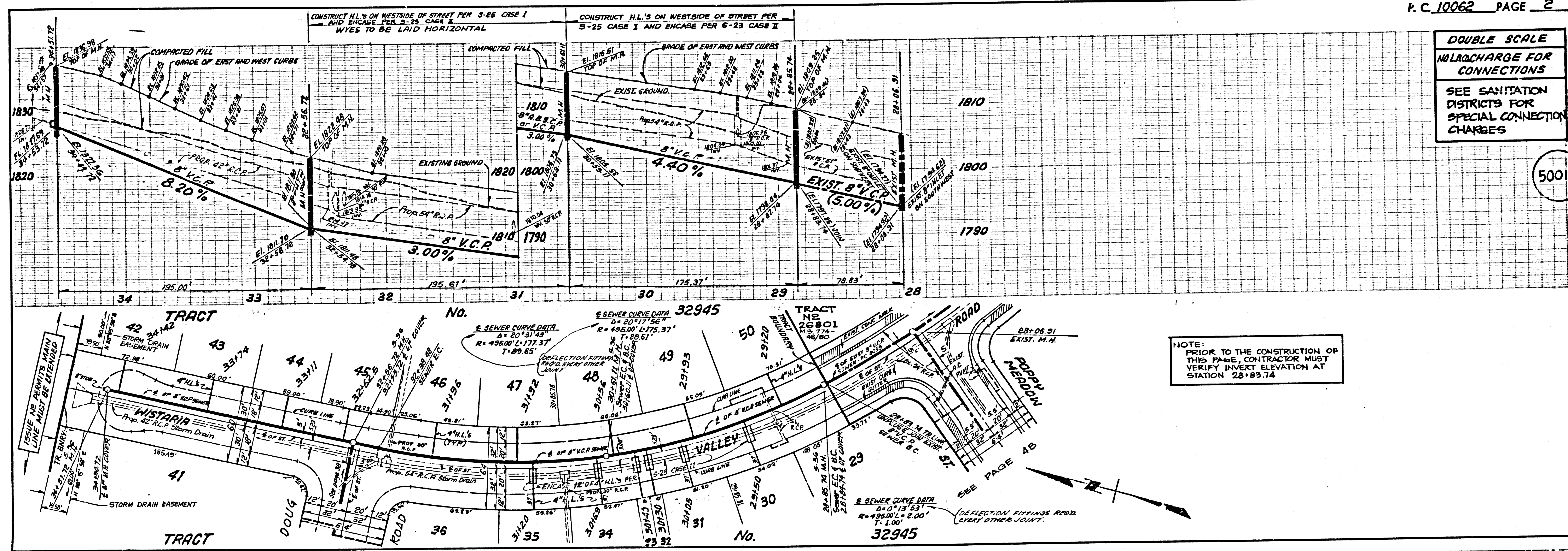
LEGEND	8-1
MINIMUM PUBLIC SAFETY REQUIREMENTS	8-2
BRICK MANHOLE	8-3
STANDARD MANHOLE STOP	8-17
BRICKING FOR SEWER PIPE	8-21
CRACKING AND ENCASEMENT	8-23
WYE OR TE SUPPORT	8-26
ALLOWABLE TRENCH WIDTHS	8-28
SOCKET MANHOLE FRAME AND COVER	8-29
NON-BRICKWORK PRECAST CONCRETE MANHOLE	8-30
SPECIAL HOUSE LATERALS	8-24
BRICKS FOR HOUSE LATERALS	8-25
BRICKING FOR A.B.C.P. PIPE	8-27A

COUNTY OF LOS ANGELES, CALIFORNIA
 STEPHEN U. NOONKE, COUNTY ENGINEER WALTER E. GARRARDIN, CHIEF ENGINEER
 CO. SAN DIST. NO. 78

APPROVED: *[Signature]* DATE 6/25/82 APPROVED: *[Signature]* DATE 6/29/82
 CHECKED: *[Signature]* DATE 6/25/82 J.P. OFFICE ENGINEER

REG. C.E. NO. 16983 DATE

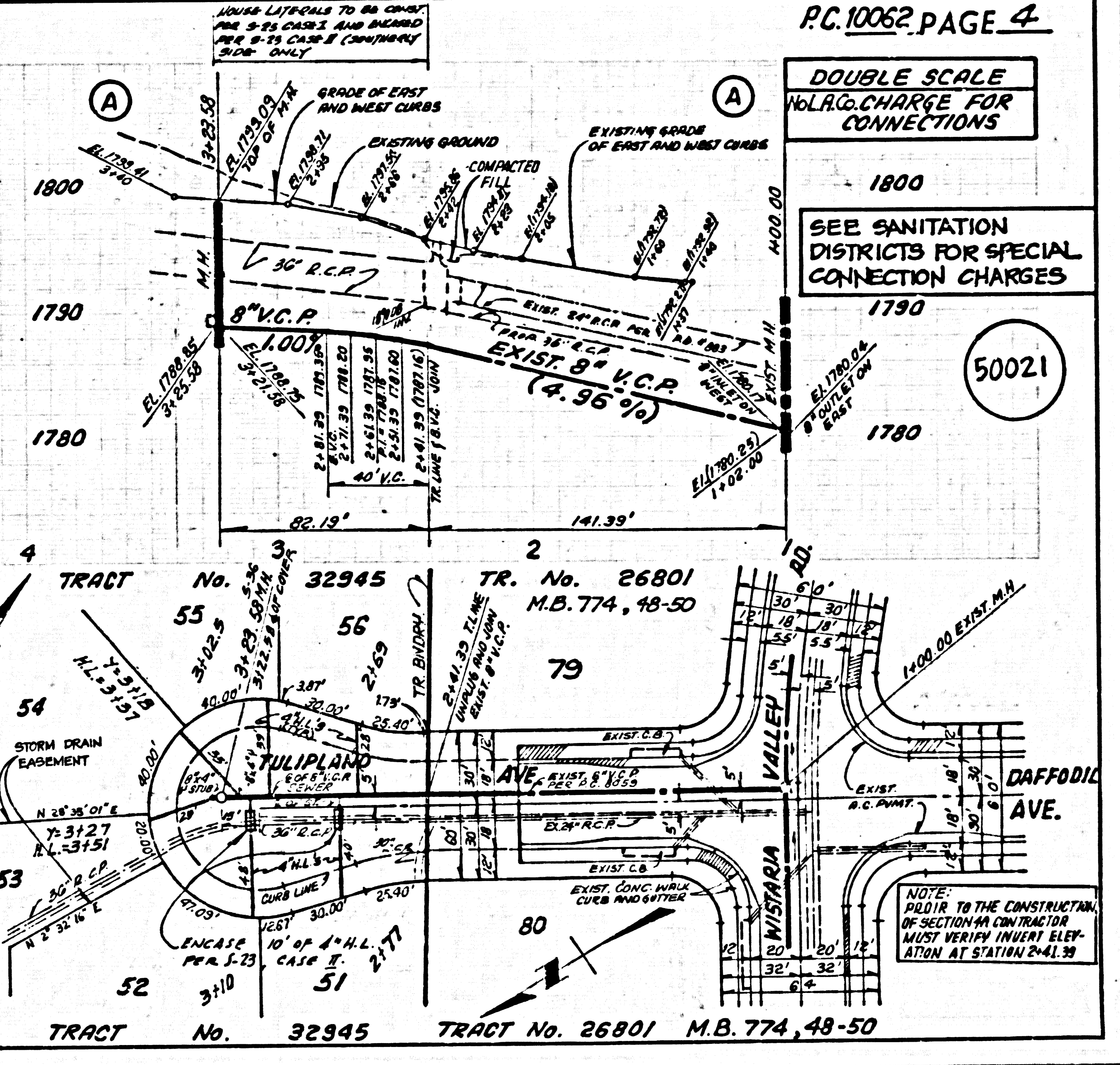
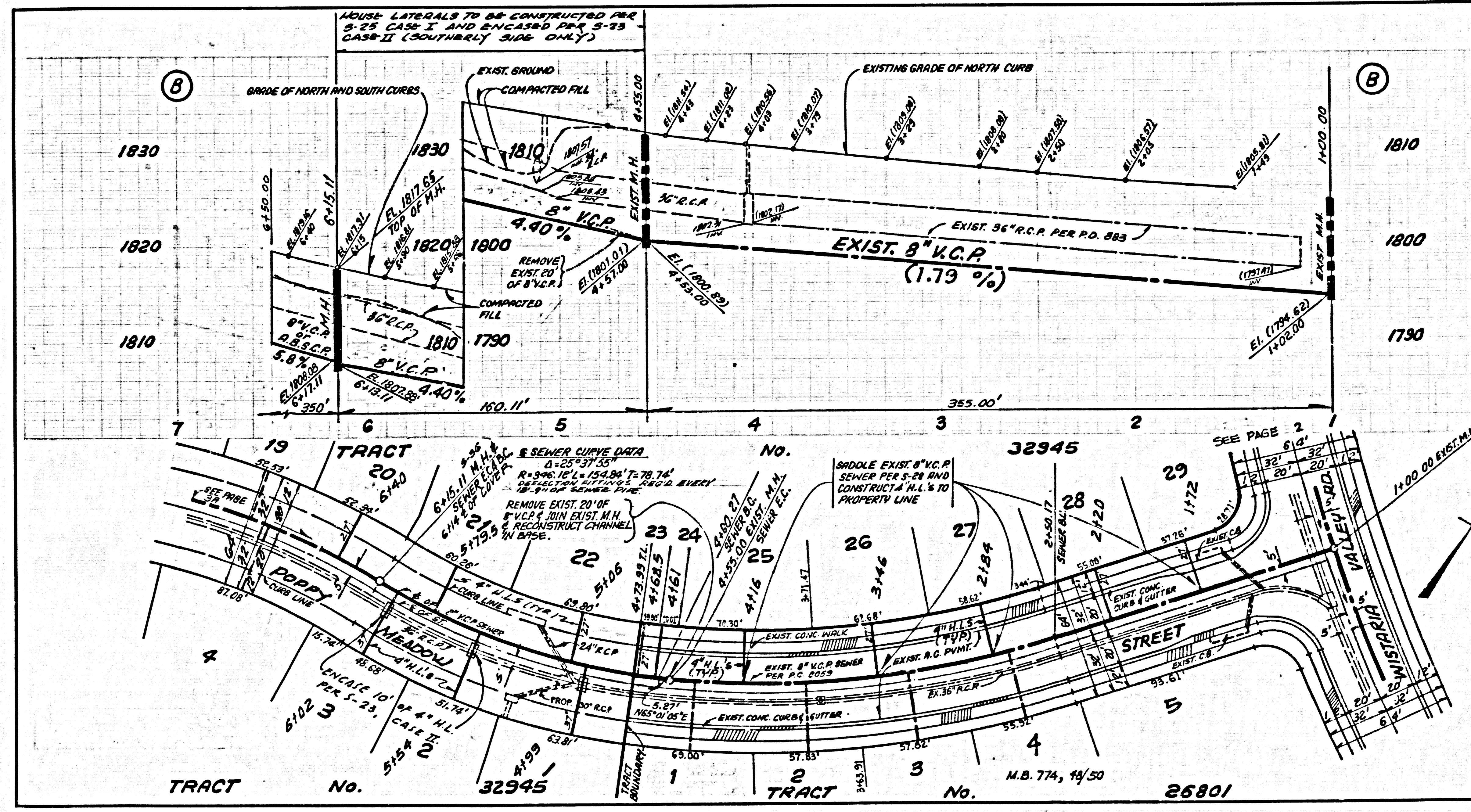
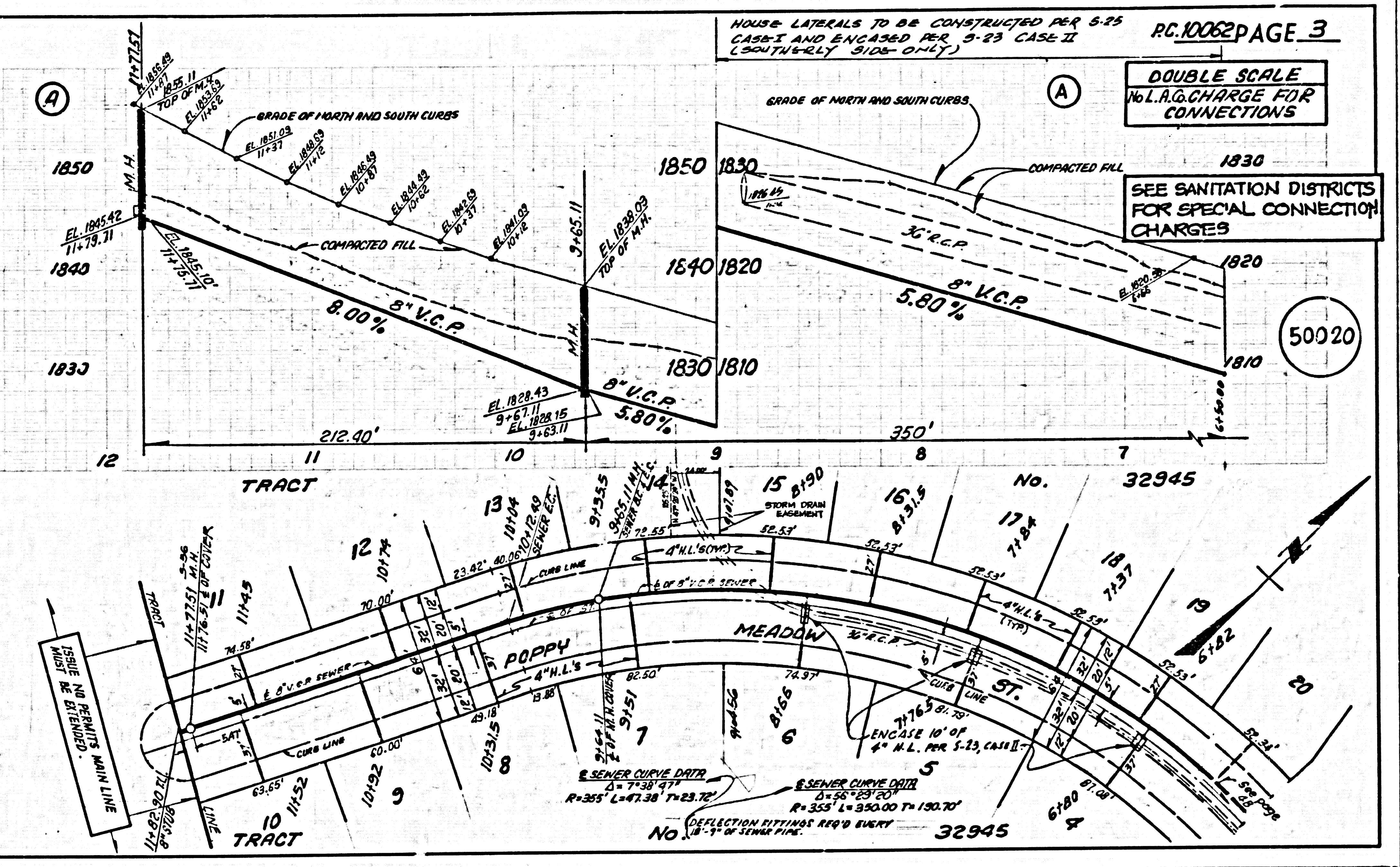
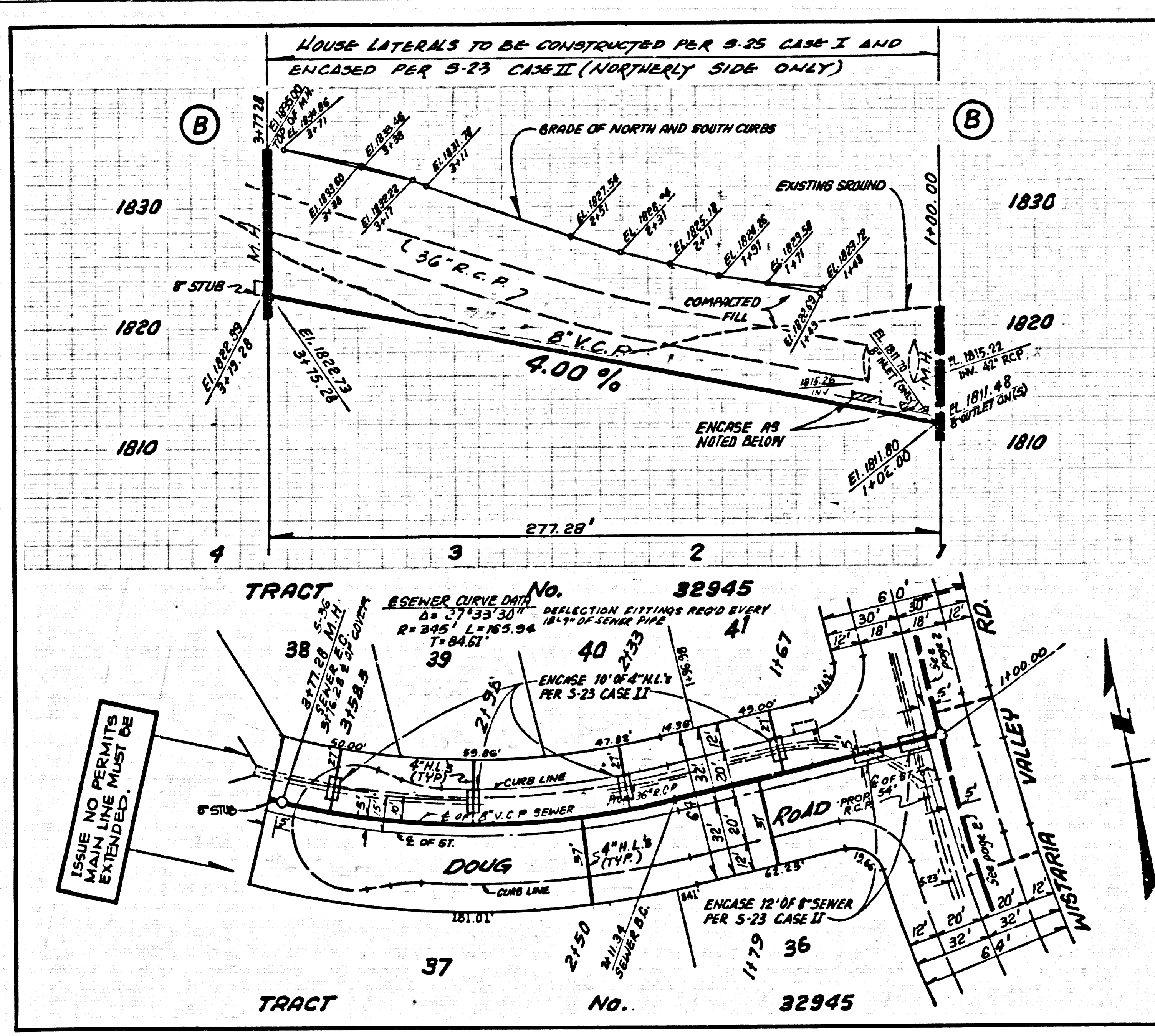
SOUTH CLAYTON WALLEY BLDG. DIST. 62



DOUBLE SCALE
 NO CHARGE FOR CONNECTIONS
 SEE SANITATION DISTRICTS FOR SPECIAL CONNECTION CHARGES

50019

NOTE: PRIOR TO THE CONSTRUCTION OF THIS PAGE, CONTRACTOR MUST VERIFY INVERT ELEVATION AT STATION 28+89.74.



DOUBLE SCALE
 NO L.A.C. CHARGE FOR CONNECTIONS

SEE SANITATION DISTRICTS FOR SPECIAL CONNECTION CHARGES

DOUBLE SCALE
 NO L.A.C. CHARGE FOR CONNECTIONS

SEE SANITATION DISTRICTS FOR SPECIAL CONNECTION CHARGES

NOTE: TO THE CONTRACTOR OR SECTION MAN CONTRACTOR MUST VERIFY INVERT ELEVATION AT STATION 2+41.38