

B.M. BY 7540A ELEV. 1135.51
 POBEM TAG 9 END BRIDGE 53-10251
 OVER VENTURA HWY @ THE CORNER
 CALABASAS RD & MUREAU RD 100
 FT. + 21 FT. E. S. INT.
 MALIBU QUAD. 1912

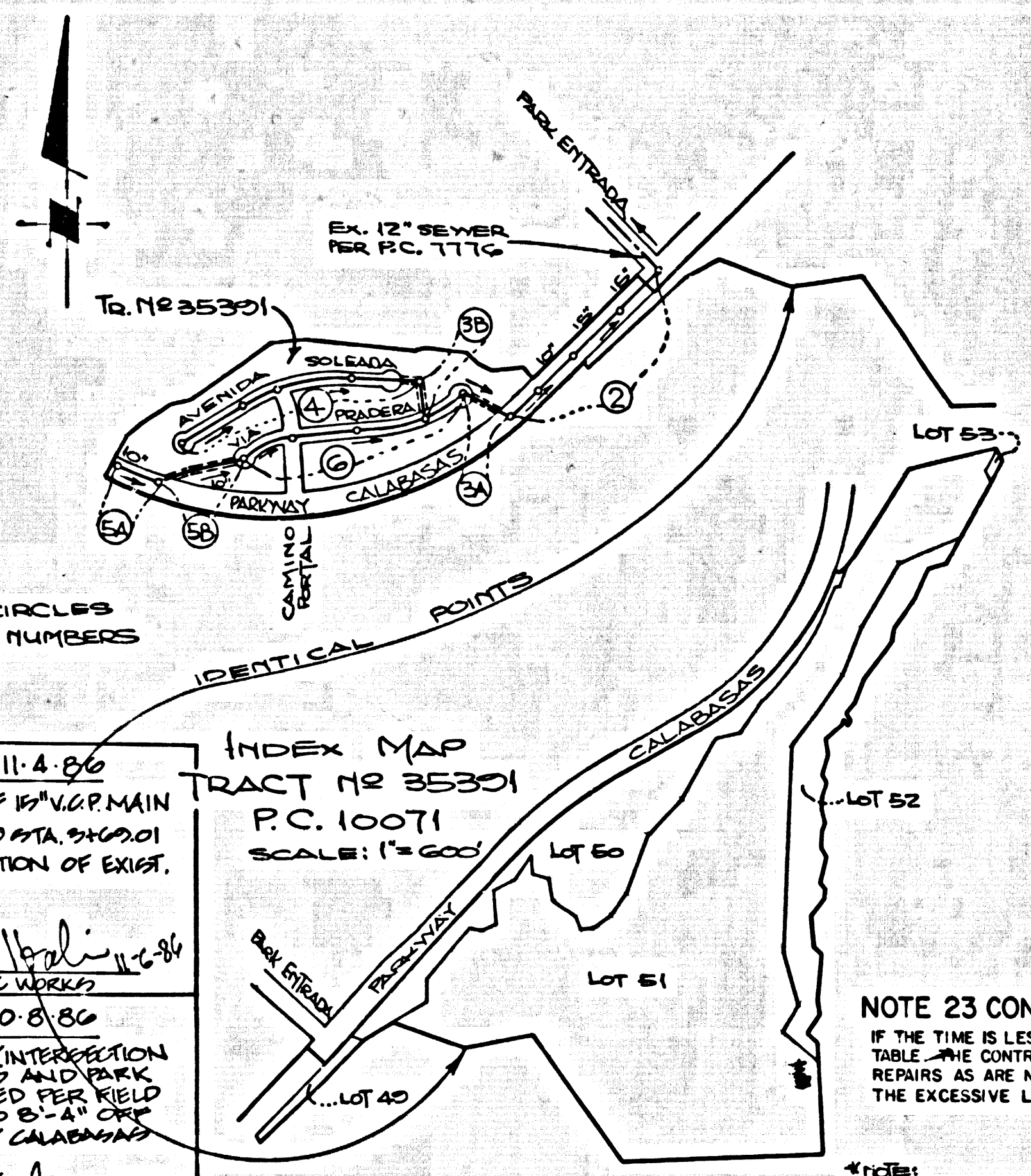
PRIVATE ENGINEERS NOTICE TO CONTRACTORS

The existence and location of any underground utility pipes or structures shown on these plans are obtained by search of the available records. To the best of our knowledge there are no existing utilities shown on these plans. The contractor is required to take due precautionary measures to protect the utility lines shown and any other lines not of record or not shown on these plans.

John R. C. E.
 Registered Engineer R.C.E., 10233

CONSTRUCTION NOTES CONT'D.

16. FULL COMPLIANCE WITH PART IV OF THE SPECIAL PROVISIONS IS REQUIRED FOR THE INSTALLATION OF A.B.S. COMPOSITE PIPE.
 17. MANHOLE WATER STOP GASKETS AND CLAMPS ARE REQUIRED FOR THE CONNECTION OF A.B.S. COMPOSITE PIPE TO MANHOLE STRUCTURES.
 18. A.B.S. SOLID WALL PIPE MUST BE USED FOR VEE AND HOUSE LATERAL CONNECTIONS TO A.B.S. COMPOSITE MAINLINE SEWER PIPE.
 19. A.B.S. COMPOSITE PIPE SHALL BE BEDED IN CONFORMANCE WITH THE TABLE IN SECTION 9-3.1 OF PART IV OF THE SPECIAL PROVISIONS.
 20. THREE DEGREE DEFLECTION COEFFICIENTS ARE REQUIRED FOR RADIUS OF CURVATURE LESS THAN 280 FEET WHEN USING 8" A.B.S. COMPOSITE PIPE.
 21. NO CONNECTIONS FOR DISPOSAL OF INDUSTRIAL WASTE IS ALLOWED IF A.B.S. COMPOSITE PIPE IS USED.
 22. SEWER LINE CURVATURE SHALL NOT BE ACHIEVED BY PULLING OF JOINTS OR BEVELING PIPE ENDS WHEN USING PLASTIC PIPE INCLUDING A.B.S. COMPOSITE PIPE.
 23. VEE AND HOUSE LATERALS ARE TO BE LOCATED AT LEAST FIVE FEET APART & WHEN POSSIBLE NOT CLOSER THAN FIVE FEET TO ANY MANHOLE.
 24. A.B.S. SOLID WALL PIPE IS NOT ACCEPTABLE FOR USE AS MAINLINE SEWER.
 25. ONLY VEE BRANCHES ARE TO BE USED FOR CONNECTION TO A.B.S. COMPOSITE MAINLINE SEWER PIPE.
- TESTING PER LAS VIRGENES MUNICIPAL WATER DISTRICT:
- A. INFILTRATION & LEAKAGE TESTS: METHOD USED FOR TESTING WILL BE THE SAME AS L.A. COUNTY EXCEPT THE FORMULA TO BE USED IS AS FOLLOWS:
 0.033 GALLONS/MINUTE/INCH OF DIAMETER/1,000 FEET
 250 GALLONS/DAY/INCH OF DIAMETER/MILE
 - B. MANHOLE LEAKAGE TESTS: AT THE DISCRETION OF THE DISTRICT'S REPRESENTATIVE, THE MANHOLE JOINT OF EVERY TEN MANHOLES MINIMUM OF TWO WILL BE FILLED WITH WATER & AFTER THREE HOURS THE WATER LEVEL SHALL BE RECHECKED. IF THE WATER LEVEL HAS DROPPED MORE THAN ONE INCH, FIVE MORE WILL BE TESTED AT THE DISCRETION OF THE DISTRICT'S REPRESENTATIVE.
 - C. AIR TESTING: WHERE THE DIFFERENCE IN ELEVATION BETWEEN THE INVERT OF THE UPPER STRUCTURE & THE INVERT OF THE LOWER STRUCTURE IS MORE THAN SIX (6) FEET, AN AIR TEST WILL BE MADE.
 IF THE TIME IS LESS THAN LISTED IN THE TABLE, THE CONTRACTOR SHALL MAKE SUCH REPAIRS AS ARE NECESSARY TO ELIMINATE THE EXCESSIVE LEAKAGE.
- | PIPE DIAMETER | MINIMUM TIME LOSS |
|---------------|-------------------|
| 4" - 6" | 15 MINUTES |
| 8" - 10" | 20 MINUTES |
| 12" - 18" | 30 MINUTES |
| 24" - 36" | 45 MINUTES |
- NOTE: THE TABLE APPLIES ONLY TO SEWER MAINS, OPERATED & MAINTAINED BY L.M.W.D.



REVISION NO. 2 DATE: 11-4-86
 PAGE 2: REVISE GRADE OF 18" V.C.P. MAIN LINE FROM STA. 1102.00 TO STA. 0901.01 ADJUSTED PER FIELD LOCATION OF EXIST. CONDUIT.

APPROVED: *John R. C. E.*
 DEPT. OF PUBLIC WORKS

REVISION NO. 1 DATE: 10-8-86
 MANHOLE AT STA. 1100 INTERSECTION OF PARKWAY CALABASAS AND PARK ENTRADA TO BE ADJUSTED PER FIELD LOCATION FROM LOT 1 TO 5. ALL CURVE OF EXISTING PARKWAY CALABASAS CURVE PAGE (PAGE 2)

APPROVED: *John R. C. E.*
 DEPT. OF PUBLIC WORKS

NOTE 23 CONT'D.

GENERAL NOTES: DOUBLE SCALE

1. ELEVATIONS ARE IN FEET ABOVE U.S.C. & G.S. 1928. LEVEL DATUM OF 1928.
2. NO REVISIONS SHALL BE MADE IN THESE PLANS WITHOUT THE APPROVAL OF THE COUNTY ENGINEER.
3. NO REPRESENTATIVE OF THE COUNTY ENGINEER WILL SURVEY OR LAY OUT ANY PORTION OF THE WORK.
4. GRADES TO WHICH THIS IMPROVEMENT IS TO BE CONSTRUCTED ARE SHOWN ON PLANS AND PROFILES. GRADE POINTS FOR TOP OF CURBS, CENTER LINE OF STREETS, OR CENTER LINE OF ALLEYS ARE SHOWN BY CIRCLES ON PROFILES. AT ALL POINTS BETWEEN DESIGNATED POINTS THE GRADE SHALL BE ESTABLISHED SO AS TO CONFORM TO A STRAIGHT LINE DRAWN BETWEEN SAID DESIGNATED POINTS.
5. THE PRIVATE ENGINEER SHALL FURNISH THE COUNTY ENGINEER WITH GRADATION SHEETS AND STATIONING FOR ALL HOUSE LATERALS AND "Y" OR "T" BRANCHES AND SHALL PROVIDE STAKES FOR THEM AT THEIR PROPER LOCATIONS WITH STATIONING PLAINLY MARKED. ALL HOUSE LATERALS SHALL BE CONSTRUCTED IN A STRAIGHT ALIGNMENT AT RIGHT ANGLES FROM THE MAIN LINE SEWER EXCEPT AS SHOWN ON THE PLANS. HOUSE LATERALS FROM CHIMNEYS SHALL NOT HAVE AN ANGLE OF LESS THAN 45° WITH THE MAIN LINE SEWER. ANY CHANGE IN ALIGNMENT SHALL BE REQUESTED IN WRITING BY THE PRIVATE ENGINEER.
6. THE PRIVATE ENGINEER SHALL FURNISH THE HOUSE LATERAL DEPTH AT THE PROPERTY LINE BELOW THE TOP OF CURB ELEVATION FOR EACH HOUSE LATERAL ON THE GRADE SHEET.
7. BEFORE WORK CAN BE STARTED, THE CONTRACTOR MUST OBTAIN A PERMIT TO EXCAVATE IN COUNTY STREETS FROM THE L.A. COUNTY ROAD DEPT., DISTRICT OFFICE NO. 5, AND PAY A FEE TO THE COUNTY ENGINEER, 800 S. VERMONT AVENUE, LOS ANGELES, CALIFORNIA.
8. IF WORK IS TO BE DONE IN A STATE HIGHWAY, A PERMIT MUST BE OBTAINED FROM THE STATE OF CALIFORNIA, DIVISION OF HIGHWAYS, 120 SOUTH SPRING STREET, LOS ANGELES, CALIFORNIA.
9. APPROVAL OF THIS PLAN BY THE COUNTY OF LOS ANGELES DOES NOT CONSTITUTE A REPRESENTATION AS TO THE ACCURACY OF THE LOCATION OR OF THE EXISTENCE OR NON-EXISTENCE OF ANY UNDERGROUND UTILITY PIPE, OR STRUCTURE WITHIN THE LIMITS OF THE PROJECT. THIS NOTE APPLIES TO ALL HADES.
10. REFER TO SECTION 7.14 OF THE STANDARD SPECIFICATIONS, REGARDING SAFETY ORDERS.
11. PRIOR TO THE BEGAINING OF THE REQUIRED SEWER CONSTRUCTION PERMIT, THE CONTRACTOR SHALL OBTAIN AND FILE WITH THE COUNTY ENGINEER COPIES OF A PERMIT TO EXCAVATE IN COUNTY STREETS FROM THE LOS ANGELES COUNTY ROAD DEPARTMENT, A PERMIT FOR EXCAVATIONS AND TRENCHES FROM THE STATE OF CALIFORNIA, DIVISION OF INDUSTRIAL SAFETY AND CERTIFICATE OF WORKER'S COMPENSATION INSURANCE WITH THE DEPARTMENT OF COUNTY ENGINEER, 800 SOUTH VERMONT, RM. 408, LOS ANGELES, CALIFORNIA. THESE MUST BE OBTAINED BY THE CONTRACTOR PRIOR TO CANCELLATION OF POLICY.

CONSTRUCTION NOTES:

1. WORK SHALL BE CONSTRUCTED ACCORDING TO THE STANDARD SPECIFICATIONS FOR PUBLIC WORKS CONSTRUCTION (1985 EDITION) AND SUPPLEMENTAL SPECIFICATIONS AND COUNTY ENGINEER SPECIAL PROVISIONS FOR THE CONSTRUCTION OF SANITARY SEWERS DATED 5/21/85. ALL SPECIFICATIONS AND SPECIAL PROVISIONS SHALL BE IN THE PRESENCE OF THE COUNTY ENGINEER.
2. THE CONTRACTOR SHALL NOTIFY THE ENVIRONMENTAL DEVELOPMENT DIVISION BY TELEPHONE 728-2181, AT LEAST TWENTY-FOUR HOURS BEFORE STARTING ANY WORK UNDER THIS CONTRACT.
3. HOUSE LATERALS TO BE CONSTRUCTED WITHIN AREAS AT PROPERTY LINE FEET BELOW CURB GRADE EXCEPT AS NOTED.
4. VEE OR TEE BRANCHES MAY BE USED FOR CONNECTIONS TO MAINLINE SEWERS EXCEPT AS NOTED.
5. ALL STRUCTURES SHALL BE EITHER BRICK MANHOLES PER 3-0 OR PRECAST CONCRETE MANHOLES PER 3-0, EXCEPT AS NOTED.
6. PROVIDE STAKES ON THE PROPERTY LINE OR PROPERTY LINES PRODUCED AT RIGHT ANGLES TO THE SEWER LINE AT THE CENTER LINE OF EACH MANHOLE.
7. MANHOLE TOPS IN UNIMPROVED AREAS TO BE SIX INCHES ABOVE FINISHED GRADE.
8. WITHIN CLAY PIPE JOINTS SHALL BE TYPE "D" OR "E" PER STANDARD SPECIFICATIONS SECTION 308-2.
9. IF A POWER POLE IS WITHIN THREE FEET OF THE SEWER, THE SEWER SHALL BE ENCASED, PER CASE II, TWO FEET ON EACH SIDE FROM THE POINT OF INTERFERENCE.
10. IF DURING THE COURSE OF CONSTRUCTION IT IS DETERMINED THAT THERE IS LESS THAN FOUR FEET OF COVER OVER THE TOP OF A MAIN LINE OR HOUSE LATERAL SEWER WHICH IS NOT INDICATED ON THE PLANS, THE PIPE SHALL BE ENCASED PER CASE II UNLESS OTHERWISE APPROVED BY THE COUNTY ENGINEER.
11. ALL JOINTS BETWEEN CAST IRON PIPE AND WITHIN CLAY PIPE SHALL BE MADE WITH A RUBBER BLEVUE JOINT, TYPE "D" OR "E", WITH BUSHING IF NECESSARY, PER STANDARD SPECIFICATIONS SECTION 308-2.
12. ALL JOINTS BETWEEN PRECAST CONCRETE PIPE SHALL BE MADE WITH A RUBBER BLEVUE JOINT, TYPE "D" OR "E", WITH BUSHING IF NECESSARY, PER STANDARD SPECIFICATIONS SECTION 308-2.
13. SEWERS TO BE TESTED FOR LEAKAGE PER SECTION 308-1.4 OF THE STANDARD SPECIFICATIONS AND SPECIAL PROVISIONS.
14. REPAIRS SHALL BE FINISHED WITHIN PAVED AREAS TO MEET L.A. COUNTY ROAD DEPT. ON CALIFORNIA STATE HIGHWAY PRECONSTRUCTION IN ACCORDANCE WITH PERMITS.
15. FULL COMPLIANCE WITH SECTION 308-1.5.3 OF THE SPECIAL PROVISIONS WILL BE REQUIRED FOR BACKFILL IN STREETS. CERTIFICATION OF BACKFILL COMPACTION AND SAND EQUIVALENTS BY A QUALIFIED, REGISTERED TESTING LABORATORY SHALL BE PROVIDED BY THE CONTRACTOR PRIOR TO THE BEGAINING OF A CERTIFICATE OF PARTIAL ACCEPTANCE.
16. SPECIAL BACKFILL AND EASEMENT CONSTRUCTION: ALL BACKFILL TRENCH AND REPAIRS TO EARTH SO AS TO ACHIEVE THE NATURAL OR FINISHED GRADES AND BLORES SHOWN ON THE GRADING PLAN APPROVED FOR THIS DEVELOPMENT BY THE BUILDING AND SAFETY DIVISION. ALL BACKFILL AND EARTH REPAIRS SHALL BE COMPACTED TO A MINIMUM OF 90% OF MAXIMUM DENSITY PER A.S.T.M. STD. METHOD OF TEST D1557 AS MODIFIED. ACCEPTABLE CERTIFICATION OF SUCH COMPACTION SHALL BE SUBMITTED TO THE ENVIRONMENTAL DEVELOPMENT DIVISION.

PROFILE, ALIGNMENT AND GRADE OF
SANITARY SEWERS
 TO BE CONSTRUCTED IN

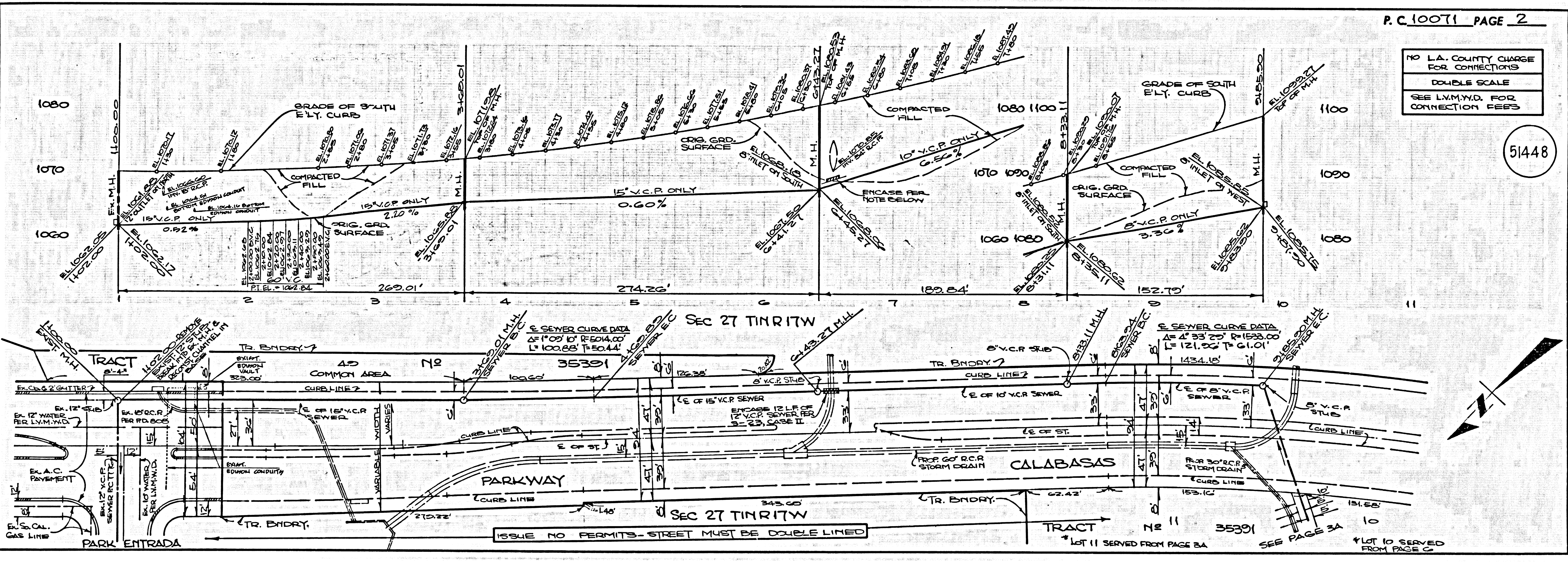
TRACT No 35391
 PRIVATE CONTRACT NO. 10071
 C-232
 W.S. 60

3 SHEETS, 6 PAGES
 SCALE: HORIZ. 1"=50' VERT. 1"=5'
 JUNE, 1982
 PREPARED IN THE OFFICES OF
 LIND & WILLESBERG, INC.
 2000 LUNINGTON DR., SAN MARINO, CALIF. 91766
 REG. C. E. No. 10233

THE FOLLOWING LATEST REVISED STANDARD PLANS ON FILE IN THE OFFICE OF THE COUNTY ENGINEER SHALL APPLY IN THE CONSTRUCTION OF THIS PROJECT:

MINIMUM PUBLIC SANITARY MANHOLES	5-1
BRICK MANHOLES	5-2
STANDARD MANHOLE SET	5-7
WORKING FOR SEWER PIPE	5-8
CLEARING AND ENCASING	5-28
W/P ON THE SUPPORT	5-28
ALUMINUM FINISH BRUSH	5-28
JOCKING MANHOLE FRAME AND COVER	5-28
NON-IMPRESSED PRECAST CONCRETE MANHOLE	5-28
BEDDING REQUIREMENTS FOR PLASTIC PIPE	5-21A
SPECIAL HOUSE LATERALS	5-28
CHIMNEY PIPE & CASE	5-27

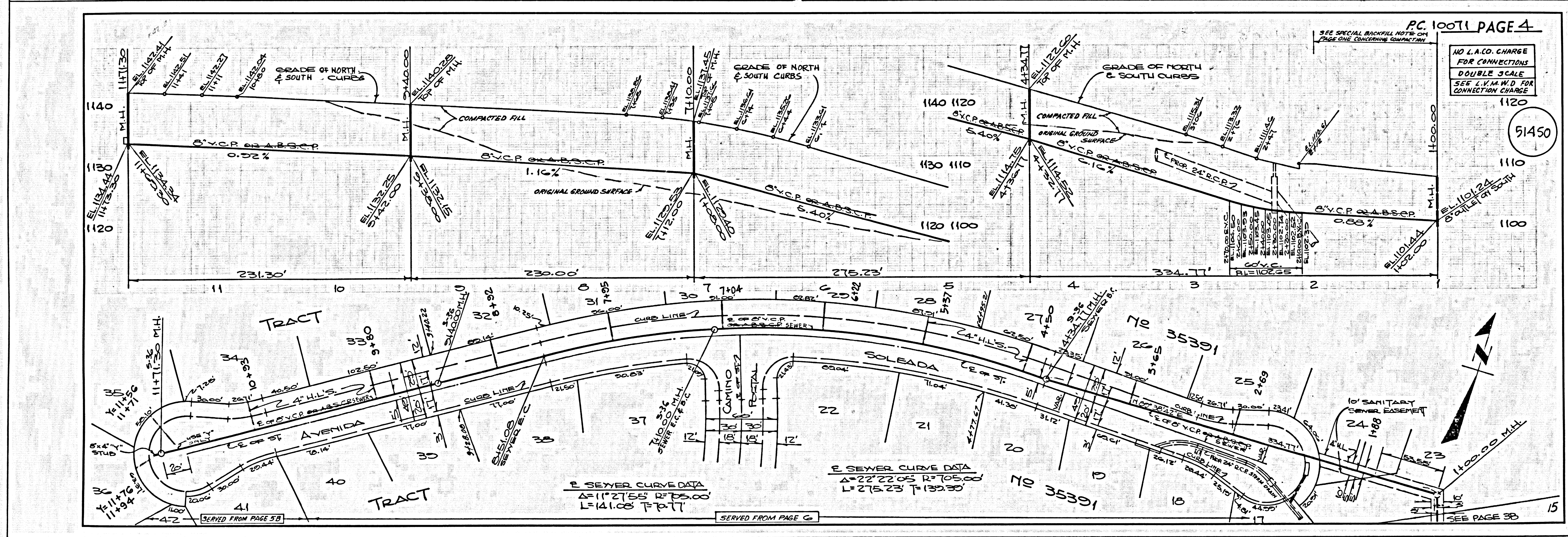
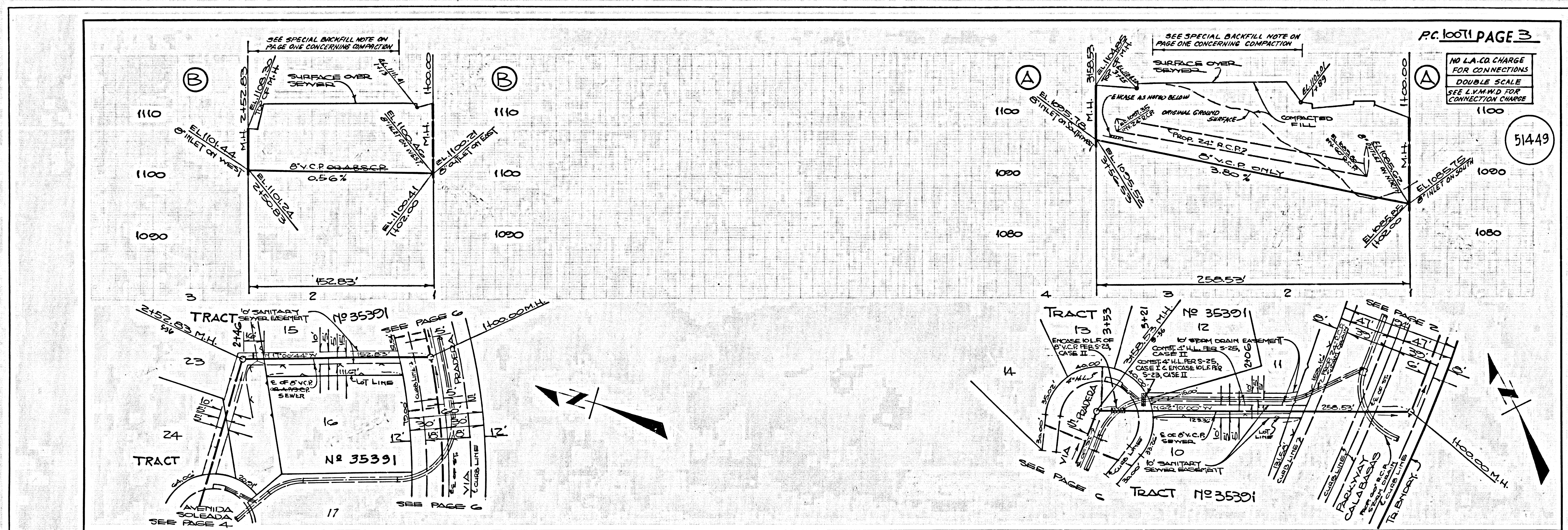
COUNTY OF LOS ANGELES, CALIFORNIA
 STEPHEN J. KOONCE, COUNTY ENGINEER
 LAS VIRGENES MUNICIPAL WATER DISTRICT
 APPROVED: *John R. C. E.* DATE: 4-26-88
 CHECKED: *Ralph David* DATE: 1/11/83
 REG. C. E. NO. 14883
 CALABASAS BLDG. DIST. 21



P.C. 10071 PAGE 2

NO L.A. COUNTY CHARGE FOR CONNECTIONS
 DOUBLE SCALE
 SEE L.M.W.D. FOR CONNECTION FEES

51448



17001.09A LEGEND SW TRACT

5

