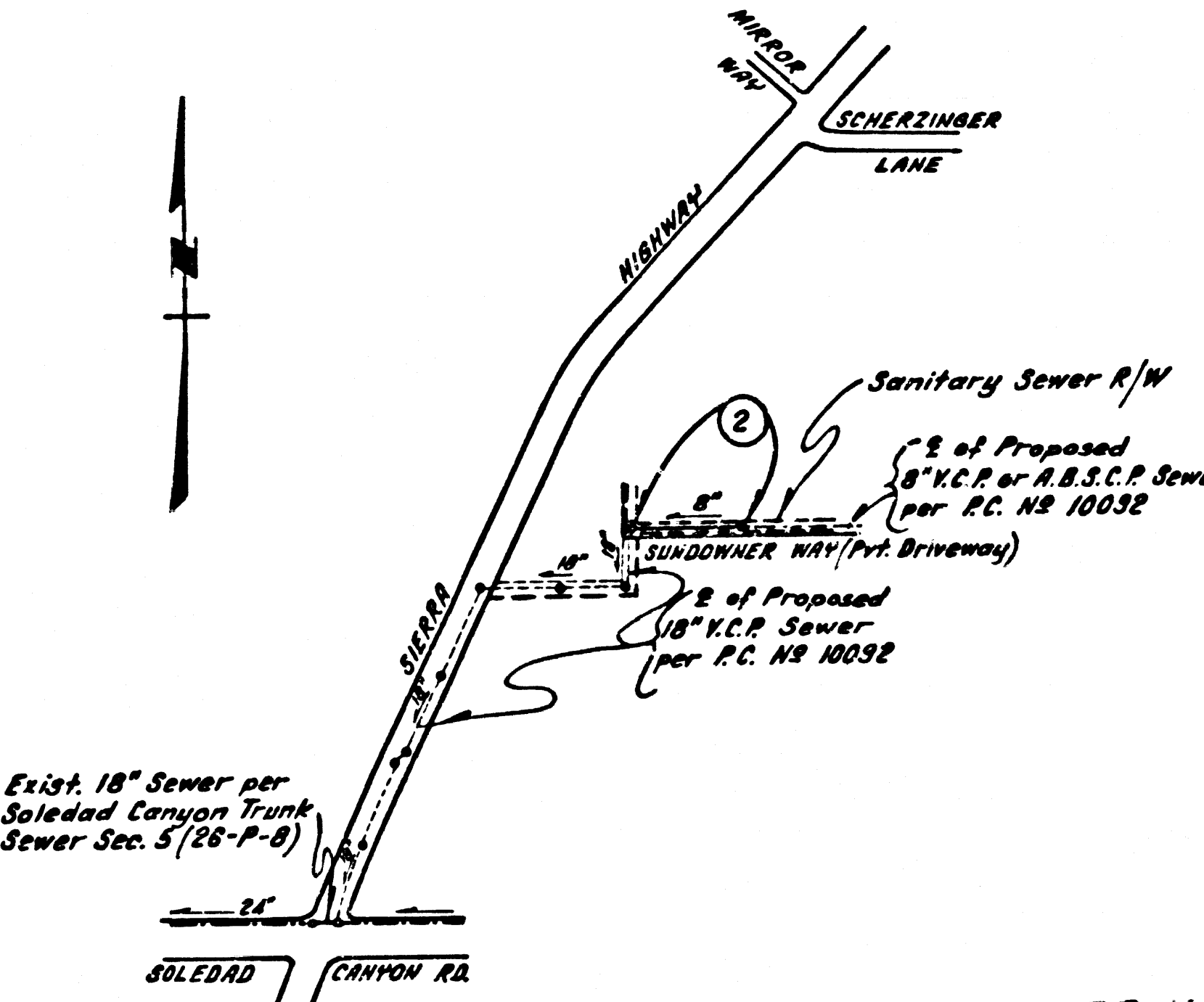


B.M. CL 1594 ELEV. 1474.995
 CSBM MON W. HOWL. CULV. 8.90 @ 53
 56.77' W. CL. SIERRA HWY @ D.I.M. S. MIRROR
 WAY 12 FT. NE PP 1443570 E. MKD/BM 201-109 1961
 NEWHALL QUAD. 19 78

DOUBLE SCALE

CONSTRUCTION NOTES: (cont)

16. WYE BRANCHES ONLY MAY BE USED FOR CONNECTIONS TO MAIN LINE SEWER IF A.B.S.C.P. IS USED.
17. ALL JOINT BETWEEN CAST IRON PIPE AND A.B.S.C.P. SHALL BE MADE WITH APPROVED FITTINGS.
18. FULL COMPLIANCE WITH PART IV. OF THE SPECIAL PROVISIONS IS REQUIRED FOR THE INSTALLATION OF A.B.S. COMPOSITE PIPE AND A.B.S. SOLID WALL HOUSE LATERALS.
19. MANHOLE WATER STOP BRACKETS AND CLAMPS ARE REQUIRED FOR THE CONNECTION OF A.B.S. COMPOSITE PIPE TO IRONPIPE STRUCTURES.
20. A.B.S. SOLID WALL PIPE MUST BE USED FOR WYE AND HOUSE LATERAL CONNECTIONS TO A.B.S. COMPOSITE MAINLINE SEWER PIPE.
21. 3 DEGREE DEFLECTION COUPLERS MUST BE USED TO ACCOMPLISH RADIUS OF CURVATURE LESS THAN 360'.
22. A.B.S. COMPOSITE PIPE SHALL BE BEDDED IN CONFORMANCE WITH THE TABLE IN SECTION 8-31 OF PART IV. OF SPECIAL PROVISIONS.



**SEWER IN SUNDOWNER WAY (PVT. DRIVEWAY)
 INDEX MAP
 P.C. NO 10092-A
 Scale: 1" = 600'**

ISSUE NO HOUSE CONNECTION PERMITS UNTIL THE OUTLET SEWER PRIVATE CONTRACT NO 10092 IS ACCEPTED FOR PUBLIC USE BY THE COUNTY OF LOS ANGELES

NO CONNECTION FOR THE DISPOSAL OF INDUSTRIAL WASTES SHALL BE MADE TO SEWERS SHOWN ON THESE DRAWINGS UNTIL A PERMIT FOR INDUSTRIAL WASTEWATER DISCHARGE HAS BEEN ISSUED BY THE SANITATION DISTRICTS FOR SAID CONNECTION.
 BEFORE BREAKING INTO OR CONSTRUCTION ON A COUNTY SANITATION DISTRICT SEWER AND PRIOR TO FINAL ACCEPTANCE OF THE PROJECT, SANITATION DISTRICT INSPECTOR SHALL BE NOTIFIED BY PHONE - 962-8605, 638-8161 SO THAT REQUIRED INSPECTION CAN BE MADE.

GENERAL NOTES:

1. ELEVATIONS ARE IN FEET ABOVE U.S.C. & G.S. ST. LEVEL, DATUM OF 1929.
2. NO REVISIONS SHALL BE MADE IN THESE PLANS WITHOUT THE APPROVAL OF THE COUNTY ENGINEER.
3. NO REPRESENTATIVE OF THE COUNTY ENGINEER WILL SURVEY FOR LAY OUT ANY PORTION OF THE WORK.
4. DETAILS TO WHICH THIS WORK IS TO BE CONSTRUCTED ARE SHOWN IN PLANS AND PROFILES. WORK POINTS SHALL BE TO CURBS. CENTER LINE OF STREETS OR CENTER LINE OF ALLEYS ARE SHOWN BY CURVES ON PROFILES AT ALL POINTS BETWEEN DESIGNATED POINTS THE SHAPE SHALL BE ESTABLISHED BY STAKES TO CONFORM TO A STRAIGHT LINE DRAWN BETWEEN SAID DESIGNATED POINTS.
5. THE PRIVATE ENGINEER SHALL FURNISH THE COUNTY ENGINEER WITH GRADE SHEETS AND STATIONING FOR ALL HOUSE LATERALS AND WYE OR TEE BRANCHES AND SHALL PROVIDE STAKES FOR THEM AT THE PROPERTY LINE. ALL STATIONING SHALL BE IN FEET AND INCHES. ALL HOUSE LATERALS SHALL BE CONSTRUCTED IN STRAIGHT LINES AT RIGHT ANGLES TO THE MAIN LINE. S. W. PER A. CASE AS SHOWN ON THE PLANS. HOUSES AT ALL STATIONING POINTS SHALL NOT HAVE AN ANGLE OF LESS THAN 45° WITH THE MAIN LINE SEWER. ANY CHANGE IN ALIGNMENT SHALL BE REQUESTED IN WRITING BY THE PRIVATE ENGINEER.
6. THE PRIVATE ENGINEER SHALL FURNISH THE HOUSE LATERAL DEPTH AT THE PROPERTY LINE BELOW THE TOP OF CURB ELEVATION FOR EACH HOUSE LATERAL ON THE GRADE SHEET.
7. BEFORE WORK CAN BE STARTED, THE CONTRACTOR MUST OBTAIN A PERMIT TO EXCAVATE IN COUNTY STREETS FROM THE L.A. COUNTY ROAD DEPT. (DISTRICT OFFICE NO. 8) AND PAY A FEE TO THE COUNTY ENGINEER, 500 S. VERMONT AVENUE, LOS ANGELES, CALIFORNIA, TO COVER THE COST OF CONSTRUCTION INSPECTION AND RECORD PLANS.
8. IF WORK IS TO BE DONE ON A STATE HIGHWAY, A PERMIT MUST BE OBTAINED FROM THE STAFF OF CALIFORNIA DIVISION OF HIGHWAYS, 150 SOUTH SPRING STREET, LOS ANGELES, CALIFORNIA.
9. APPROVAL OF THIS PLAN BY THE COUNTY OF LOS ANGELES DOES NOT CONSTITUTE A REPRESENTATION AS TO THE ACCURACY OF THE LOCATION OF OR THE EXISTENCE OR NON-EXISTENCE OF ANY UNDERGROUND UTILITY PIPE, OBSTRUCTION WITHIN THE LIMITS OF THIS PROJECT. THIS NOTE APPLIES TO ALL DEPT'S.
10. REFER TO SECTION 716.41 OF THE STANDARD SPECIFICATIONS, REGARDING SAFETY ORDERS.
11. PRIOR TO THE ISSUANCE OF THE REQUIRED SEWER CONSTRUCTION PERMIT, THE CONTRACTOR SHALL OBTAIN AND FILE WITH THE COUNTY ENGINEER COPIES OF A PERMIT TO EXCAVATE IN COUNTY STREETS FROM THE LOS ANGELES COUNTY ROAD DEPARTMENT. A PERMIT FOR EXCAVATION AND TRENCHES FROM THE STATE OF CALIFORNIA DIVISION OF INDUSTRIAL SAFETY AND CERTIFICATE OF WORKERS COMPENSATION INSURANCE WITH THE DEPARTMENT OF COUNTY ENGINEER, 500 SOUTH VERMONT, RM. 408, LOS ANGELES, CALIFORNIA 90005, NAMED AS THE CERTIFICATE HOLDER TO BE NOTIFIED 30 DAYS PRIOR TO CANCELLATION OF POLICY.

CONSTRUCTION NOTES:

1. WORK SHALL BE CONSTRUCTED ACCORDING TO THE STANDARD SPECIFICATIONS FOR PUBLIC WORKS CONSTRUCTION (1983 EDITION WITH 1985 SUPPLEMENTS) COUNTY ENGINEER SPECIAL PROVISIONS FOR THE CONSTRUCTION OF SANITARY SEWERS DATED SEP. 21, 1978 AND SHALL BE PROSECUTED ONLY IN THE PRESENCE OF THE COUNTY ENGINEER.
2. THE CONTRACTOR SHALL NOTIFY THE ENVIRONMENTAL DEVELOPMENT DIVISION BY TELEPHONE 724-2156, AT LEAST TWENTY-FOUR HOURS BEFORE STARTING ANY WORK UNDER THIS CONTRACT.
3. HOUSE LATERALS TO BE CONSTRUCTED WITH INVERTS AT PROPERTY LINE 6 FEET BELOW CURB GRADE EXCEPT AS NOTED.
4. WYE OR TEE BRANCHES MAY BE USED FOR CONNECTIONS TO MAINLINE SEWERS EXCEPT AS NOTED.
5. ALL STRUCTURES SHALL BE EITHER BRICK MANHOLES PER S. 3 OR PRECAST CONCRETE MANHOLES PER S. 36 EXCEPT AS NOTED.
6. PROVIDE STAKES ON THE PROPERTY LINE OR PROPERTY LINE PRODUCE AT RIGHT ANGLES TO THE SEWER LINE AT THE CENTER LINE OF EACH MANHOLE.
7. MANHOLE TOPS IN IMPROVED RIGHTS OF WAY TO BE LEVEL WITH FINISHED GRADE.
8. VITRIFIED CLAY PIPE JOINTS SHALL BE TYPE "D" OR "G" PER STANDARD SPECIFICATIONS SECTION 200.2.
9. IN A POWER POLE IS WITHIN THREE FEET OF THE SEWER, THE SEWER SHALL BE ENCASED PER S. 23, CASE II, TWO FEET ON EACH SIDE FROM THE POINT OF INTERFERENCE.
10. DURING THE COURSE OF CONSTRUCTION THE CONTRACTOR SHALL MAINTAIN THAT THERE IS LESS THAN FOUR FEET OF COVER OVER THE TOP OF MAIN LINE HOUSE LATERALS OR SEWER OR A.B.S.C.P. HOUSE LATERALS UNLESS OTHERWISE NOTED ON THE PLANS. THE PIPE SHALL BE ENCASED PER S. 23, CASE II, UNLESS OTHERWISE APPROVED BY THE COUNTY ENGINEER.
11. ALL JOINTS BETWEEN CAST IRON PIPE AND VITRIFIED CLAY PIPE SHALL BE MADE WITH A RUBBER SLEEVE JOINT, TYPE "C" OR "D" (WITH BUSHINGS) IF NECESSARY PER STANDARD SPECIFICATIONS SECTION 200.2.
12. SEWERS TO BE TESTED FOR LEAKAGE PER SECTION 301.4 OF THE STANDARD SPECIFICATIONS AND SPECIAL PROVISIONS.
13. REINFORCE ALL TRENCHES WITHIN PAVED AREAS TO MEET L.A. COUNTY ROAD DEPT. OR CALIFORNIA STATE HIGHWAY REQUIREMENTS IN ACCORDANCE WITH PERMITS.
14. FULL COMPLIANCE WITH SECTION 306.1-15 OF THE SPECIAL PROVISIONS WILL BE REQUIRED FOR BACKFILL IN TRENCHES. CERTAIN TRENCHES SHALL BE TESTED FOR LEAKAGE AND SAND EQUIVALENTS BY A QUALIFIED REGISTERED TESTING LABORATORY SHALL BE PROVIDED BY THE PERMITTEE PRIOR TO THE ISSUANCE OF A CERTIFICATE OF PARTIAL ACCEPTANCE.
15. SPECIAL BACKFILL IN EASTMENT CONSTRUCTION (A) BACKFILL TRENCH AND REPLACE OTHER EARTH SOIL AS TO ACHIEVE THE NATURAL OR FINISHED GRADES AND SLOPES SHOWN ON THE DRAWINGS AND APPROVED FOR THIS DEVELOPMENT BY THE BUILDING AND SAFETY DIVISION. (B) ALL BACKFILL AND OTHER MATERIALS SHALL BE COMPACTED TO A MINIMUM OF 90% OF MAXIMUM DENSITY PER ASTM 510. METHOD OF TEST DENSITY AS MODIFIED. ACCEPTABLE CERTIFICATION OF SUCH COMPACTION SHALL BE SUBMITTED TO THE ENVIRONMENTAL DEVELOPMENT DIVISION.

SANITARY SEWERS

TO BE CONSTRUCTED IN

SUNDOWNER WAY (PVT. DRIVEWAY)

PRIVATE CONTRACT NO. 10092-A

A-60
 W.S. 62

50290

SCALE: VERT. 1" = 4'
 HORIZ. 1" = 40'
 DATE: JUNE 1983
 PREPARED IN THE OFFICES OF
ENGINEERING SERVICE CORPORATION
 2075 W. FULLERTON STREET, FULLERTON, CALIF. 92631
 BY: J.R. Powell
 R.F.C. No. 13235

THE FOLLOWING LATEST REVISED STANDARD PLANS ON FILE IN THE OFFICE OF THE COUNTY ENGINEER SHALL APPLY IN THE CONSTRUCTION OF THIS PROJECT:

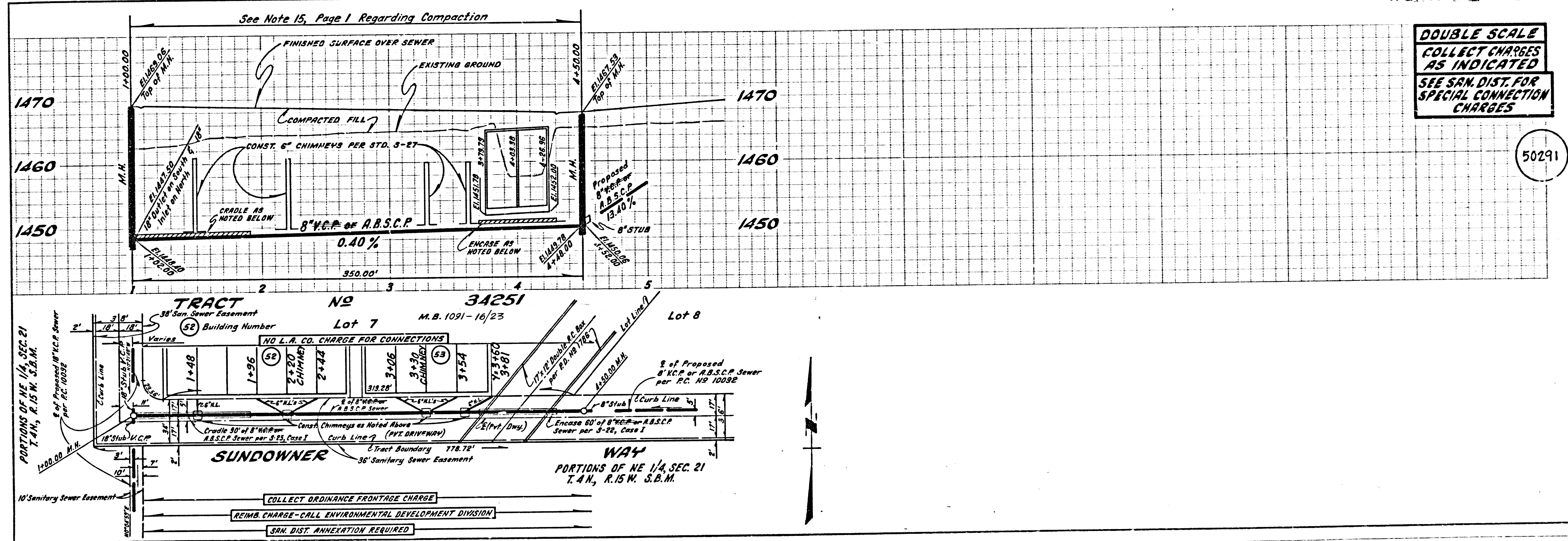
LEGEND	5.1
MINIMUM PUBLIC SAFETY REQUIREMENTS	5.2
BRICK MANHOLE	5.3
STANDARD MANHOLE STEP	5.4
BEDDING FOR SEWER PIPE	5.5
CEILING AND ENGAGEMENT	5.6
WYE OR TEE SUPPORT	5.7
ALLOWABLE TRENCH WIDTHS	5.8
LOCKING MANHOLE FRAME AND COVER	5.9
NON-REINFORCED PRECAST CONCRETE MANHOLE	5.10
CHIMNEY PIPE AND BASE	5.11

COUNTY OF LOS ANGELES, CALIFORNIA
 STEPHEN J. KOONCE, COUNTY ENGINEER WALTER E. GARRISON, CHIEF ENGINEER

APPROVED: Martin L. Muehly 6-27-83 APPROVED: [Signature] 6-27-83

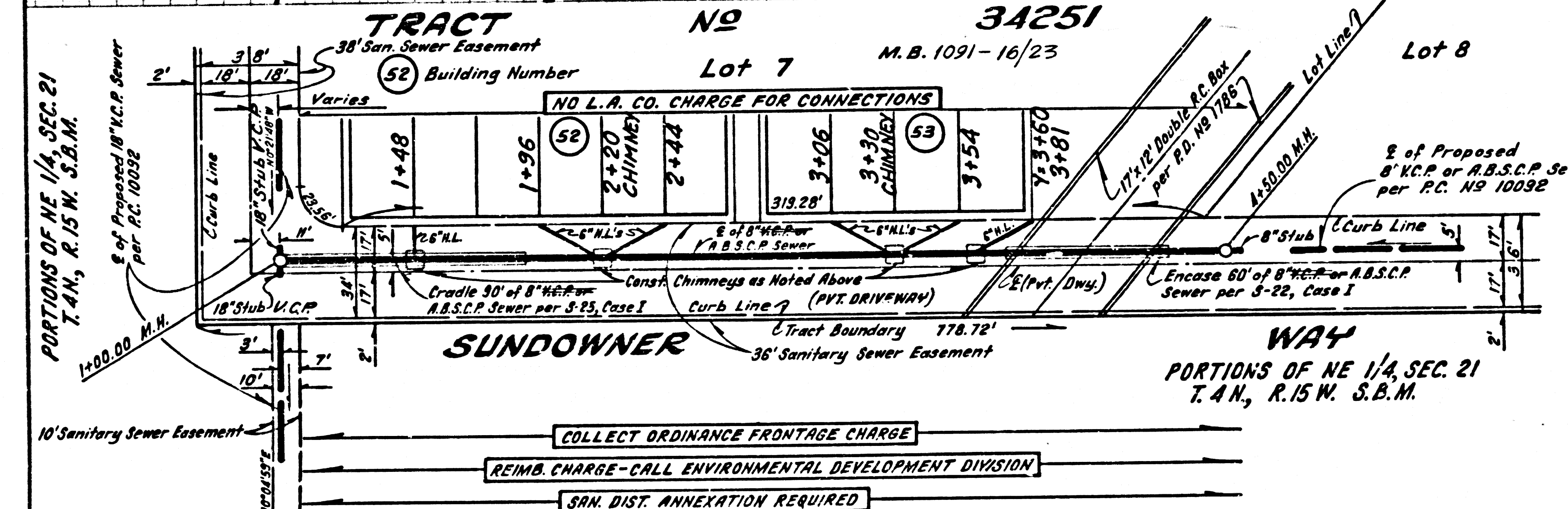
CHECKED: Satya G. Patel 6-29-83
 NO. C.E. NO. 33134

Santa Clarita Valley - BLDG. DIST. 8.2



**DOUBLE SCALE
 COLLECT CHARGES
 AS INDICATED
 SEE SAN. DIST. FOR
 SPECIAL CONNECTION
 CHARGES**

50291



COLLECT ORDINANCE FRONTAGE CHARGE
 REIMB. CHARGE - CALL ENVIRONMENTAL DEVELOPMENT DIVISION
 SAN. DIST. ANNEXATION REQUIRED

A-56001 C (P) SANITARY SEWERS IN SUNDOWNER WAY

SANITARY SEWERS

TO BE CONSTRUCTED IN TRACT No 34251

PRIVATE CONTRACT NO. 10092

C-A-60 W.S. 62

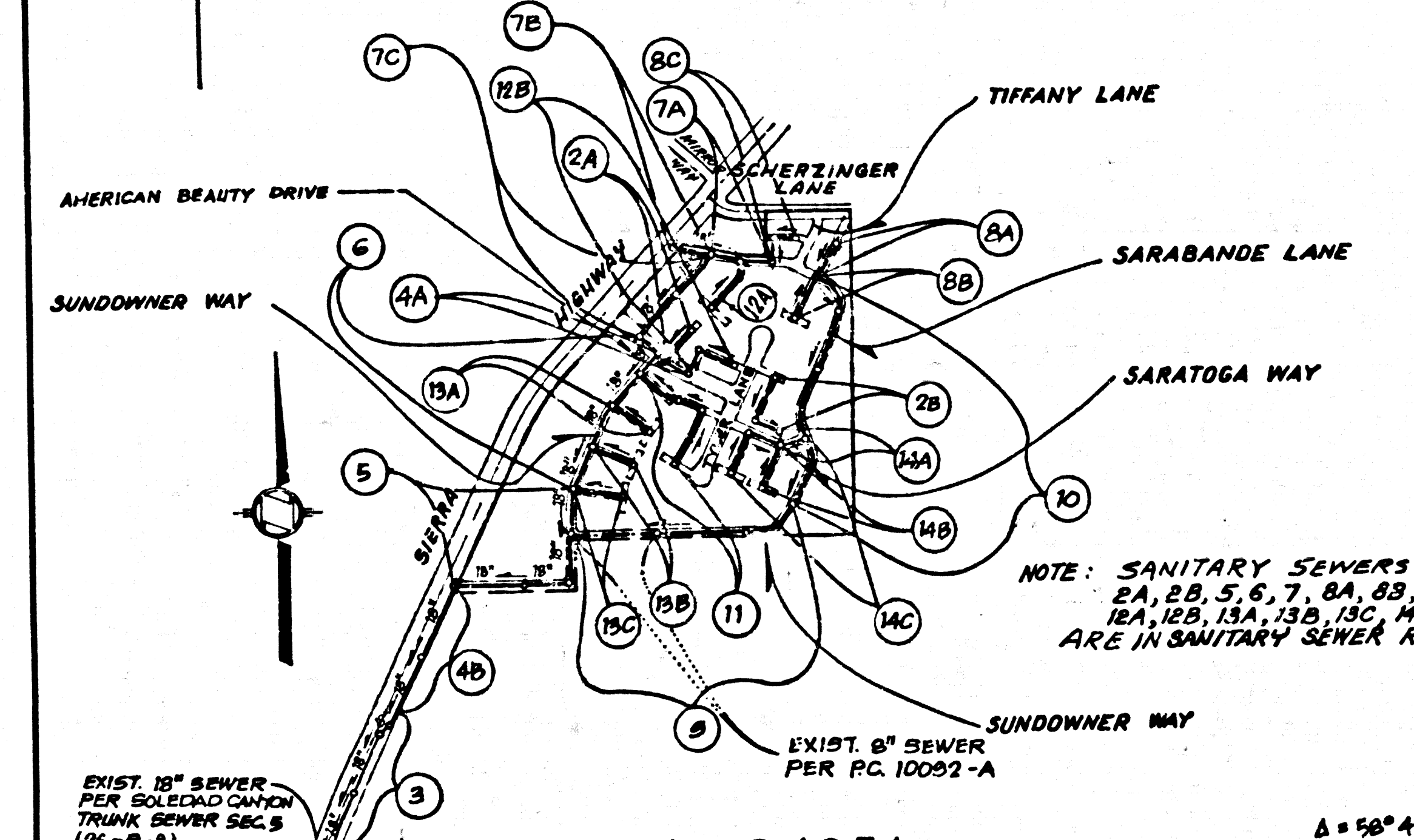
7 SHEETS, 14 PAGES

50319

SCALE: VERT. 1"=4' HORIZ. 1"=40' AUG. 26, 1982 PREPARED IN THE OFFICES OF ENGINEERING SERVICE CORPORATION

THE FOLLOWING LATEST REVISED STANDARD PLANS ON FILE IN THE OFFICE OF THE COUNTY ENGINEER SHALL APPLY IN THE CONSTRUCTION OF THIS PROJECT. LEGEND: MINIMUM PUBLIC SAFETY REQUIREMENTS S-1, BRICK MANHOLE S-2, STANDARD MANHOLE STEPS S-3, BEDDING FOR SEWER PIPE S-4, CURBING AND INCHASMENT S-5, WYE OR TEES S-6, ALLOWABLE TRENCH WIDTH S-7, LOCKING MANHOLE FRAME AND COVER S-8, NON-BRIBBLED PRECAST CONCRETE MANHOLE S-9. IN ADDITION THE FOLLOWING COUNTY SANITATION DISTRICT STANDARDS SHALL APPLY TO THE CONSTRUCTION OF THIS PROJECT. STANDARD MANHOLE TYPE "D" S-A-204, STANDARD MANHOLE TYPE "E" S-A-206. COUNTY OF LOS ANGELES, CALIFORNIA. STEPHEN J. KOONCE, COUNTY ENGINEER, WALTER E. GARRISON, CHIEF ENGINEER. APPROVED: Martin L. Murphy 5-18-83, APPROVED: [Signature] 5/17/83. CHECKED: Ralph Donald [Signature] 5/17/83. REG. C. E. No. 13095. SANTA CLARITA VALLEY BLDG. DIST. B.2.

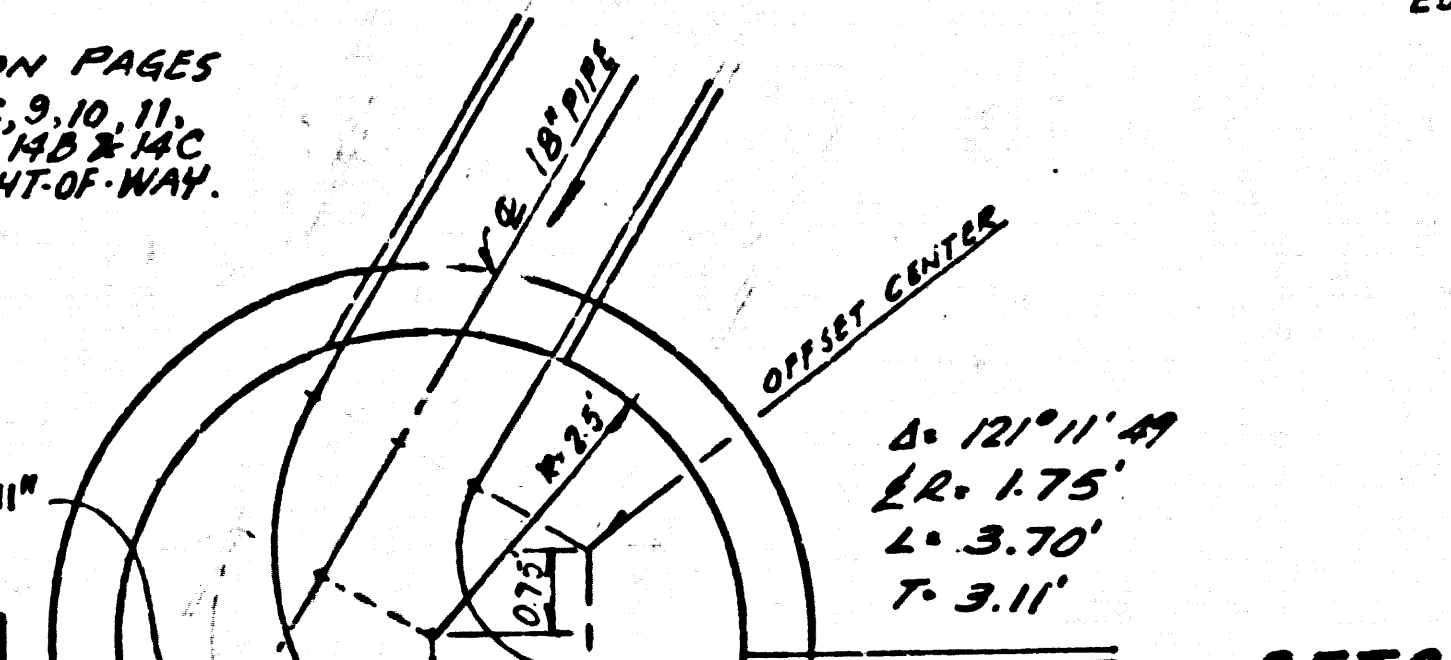
B.M. CL 1594 ELEV. 1474.995 CSBM ALON. W. HDWL. CULV. 8 90 @ 53 26 FT. W. CL SIERRA HWY. @ 0.1 MI. 5 MIRROR WAY 12 FT. NE PP 1443570E M.H. 1 BM 201-103 (1981) NEWHALL QUAD. 1978. DOUBLE SCALE



TRACT No. 34251 INDEX MAP P.C. No. 10092 SCALE: 1 INCH = 600 FEET. REVISION NO. 2 DATE 4-6-83 REVISE 10" SEWER STATION C+90.01 TO 12+70.81 ON PAGES 9 & A. REVISE 10" SEWER STA. C+115.96 TO STA. 5+80.00 ON PAGE 5. APPROVED: [Signature] RCE 33134 OFFICE OF COUNTY ENGINEER. REVISION NO. 3 DATE 9-21-83 MOVE M.H. FROM STA. 3+80.00 TO STA. 4+24.50 AND CONST. S.I.P. OF 8" V.C.P. PAGE 5. CONST. S.I.P. OF 8" V.C.P. IN Sundowner Way at M.H. STA. 7+83.07 PAGE 5. CONST. S.I.P. OF 8" V.C.P. IN American Beauty Drive Sta. 17+24.14 to Sta. 17+61.04 PAGE 7c. CONST. S.I.P. OF 8" V.C.P. IN American Beauty Drive Sta. 17+24.14 to Sta. 17+61.04 PAGE 7c. APPROVED: [Signature] RCE 33134 OFFICE OF COUNTY ENGINEER.

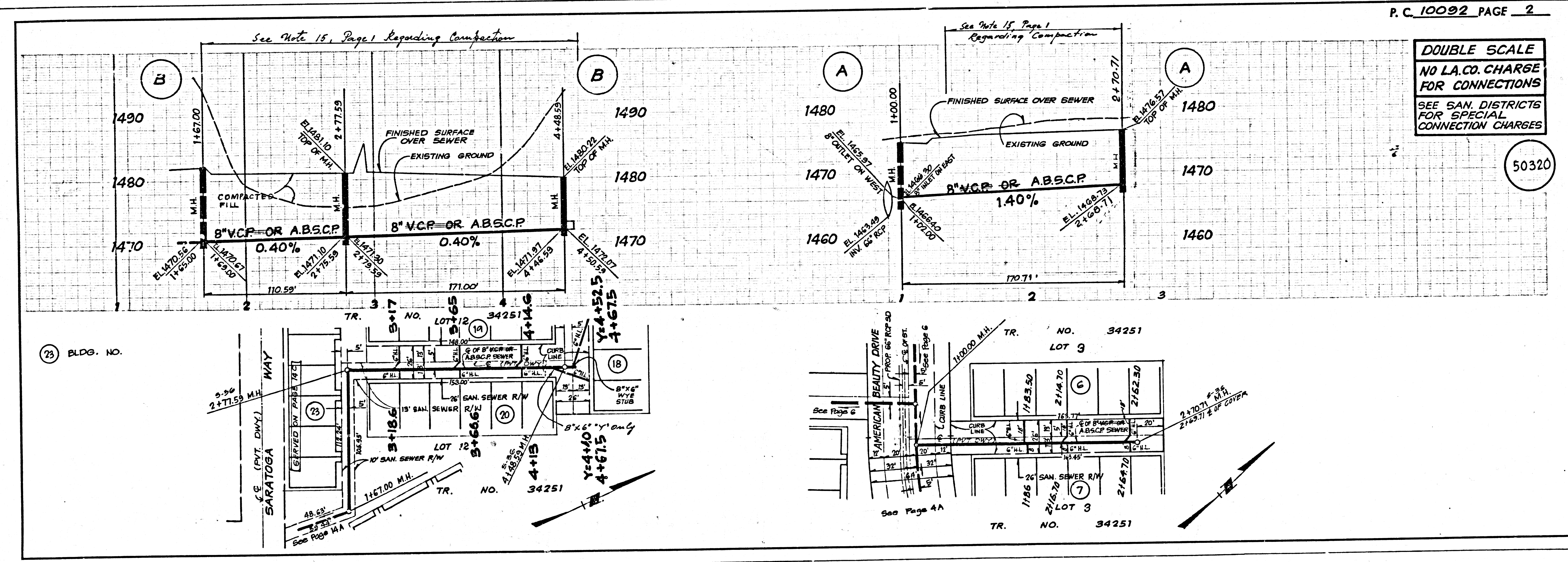
CONSTRUCTION NOTES: (CONT.) 17. WYE BRANCHES ONLY MAY BE USED FOR CONNECTIONS TO MAIN LINE SEWER IF A.B.S.C.P. IS USED. 18. ALL JOINTS BETWEEN CAST IRON PIPE AND A.B.S.C.P. SHALL BE MADE WITH APPROVED FITTINGS. 19. FULL COMPLIANCE WITH PART 14 OF THE SPECIAL PROVISIONS IS REQUIRED FOR THE INSTALLATION OF A.B.S. COMPOSITE PIPE AND A.B.S. SOLID WALL HOUSE LATERALS. 20. MANHOLE WIPER STOP GASKETS AND CLAMPS ARE REQUIRED FOR THE CONNECTION OF A.B.S. COMPOSITE PIPE TO MANHOLE STRUCTURES. 21. A.B.S. SOLID WALL MUST BE USED FOR WYE AND HOUSE LATERAL CONNECTIONS TO A.B.S. COMPOSITE 1" SINKING SEWER PIPE. 22. 3 ORBERE DEFLECTION COUPLERS MUST BE USED TO ACCOMPLISH RADIUS OF CURVATURE LESS THAN 300'. 23. A.B.S. COMPOSITE PIPE SHALL BE BEDDED IN CONFORMANCE WITH THE TABLE IN SECTION B-51 OF PART 15 OF SPECIAL PROVISIONS.

SPECIAL S.I.D. MANHOLES PER S-3 OR S-2-206, CASE III WITH S-35 FRAMES & COVERS. Page 4D M.H. 12174.1 Page 5 M.H. 5+57.62 Page 6 M.H. 10+14.93 Page 7D M.H. 11+28.14 Page 7c M.H. 11+28.14



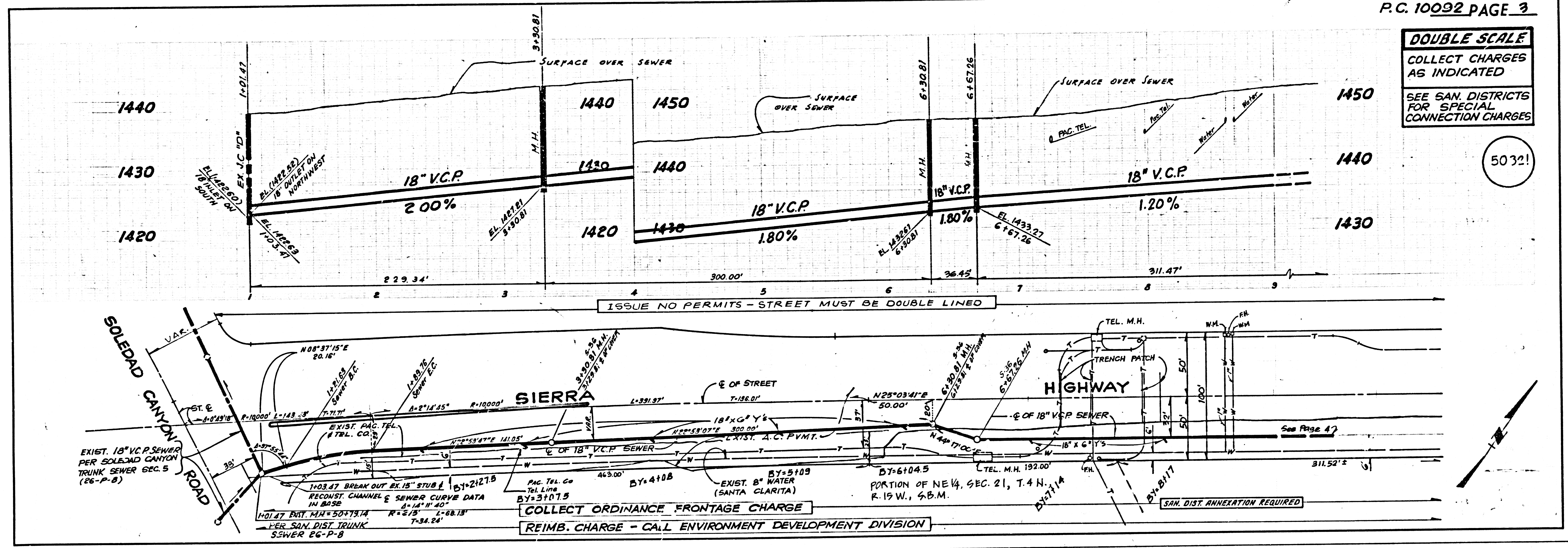
GENERAL NOTES: 1. ELEVATIONS ARE IN FEET ABOVE U.S.C. & G.S. SEA LEVEL DATUM OF 1988. 2. NO REVISIONS SHALL BE MADE IN THESE PLANS WITHOUT THE APPROVAL OF THE COUNTY ENGINEER. 3. NO REPRESENTATIVE OF THE COUNTY ENGINEER WILL SURVEY OR LAY OUT ANY PORTION OF THE WORK. 4. GRADES TO WHICH THIS IMPROVEMENT IS TO BE CONSTRUCTED ARE SHOWN BY CIRCLES ON PLANS AND PROFILES. GRADE POINTS FOR TOP OF CURBS, CENTER LINE OF ALLEYS ARE SHOWN BY CIRCLES ON PROFILES. AT ALL POINTS BETWEEN DESIGNATED POINTS THE GRADE SHALL BE ESTABLISHED SO AS TO CONFORM TO A STRAIGHT LINE DRAWN BETWEEN SAID DESIGNATED POINTS. 5. THE PRIVATE ENGINEER SHALL FURNISH THE COUNTY ENGINEER WITH GRADE SHEETS AND STATIONING FOR ALL HOUSE LATERALS AND "T" OR "Y" BRANCHES AND SHALL PROVIDE STAKES FOR THEM AT THEIR PROPER LOCATIONS WITH STATIONING PLAINLY MARKED. ALL HOUSE LATERALS SHALL BE CONSTRUCTED AT RIGHT ANGLES FROM THE MAIN LINE SEWER EXCEPT AS SHOWN ON THE PLANS. HOUSE LATERALS FROM CHIMNEYS SHALL NOT HAVE AN ANGLE OF LESS THAN 80° WITH THE MAIN LINE SEWER. ANY CHANGE IN ALIGNMENT SHALL BE REQUESTED IN WRITING BY THE PRIVATE ENGINEER. 6. THE PRIVATE ENGINEER SHALL FURNISH THE HOUSE LATERAL DEPTH AT THE PROPERTY LINE BELOW THE TOP OF CURB ELEVATION FOR EACH HOUSE LATERAL ON THE GRADE SHEET. 7. BEFORE WORK CAN BE STARTED, THE CONTRACTOR MUST OBTAIN A PERMIT TO EXCAVATE IN COUNTY STREETS FROM THE L.A. COUNTY ROAD DEPT., DISTRICT OFFICE NO. 1, AND PAY A FEE TO THE COUNTY ENGINEER, 800 S. VERMONT AVENUE, LOS ANGELES, CA 90008, TO COVER THE COST OF CONSTRUCTION INSPECTION AND RECORD PLANS. 8. WORK IS TO BE DONE IN A STATE HIGHWAY. A PERMIT MUST BE OBTAINED FROM THE STATE OF CALIFORNIA, DIVISION OF HIGHWAYS, 120 SOUTH SPRING STREET, LOS ANGELES, CALIFORNIA. 9. APPROVAL OF THIS PLAN BY THE COUNTY OF LOS ANGELES DOES NOT CONSTITUTE A REPRESENTATION AS TO THE ACCURACY OF THE LOCATION OF OR THE EXISTENCE OR NON-EXISTENCE OF ANY UNDERGROUND UTILITY PIPE, OR STRUCTURE WITHIN THE LIMITS OF THE PROJECT. THIS NOTE APPLIES TO ALL PAGES. 10. REFER TO SECTION 7.18.1 OF THE STANDARD SPECIFICATIONS, REGARDING SAFETY ORDERS. 11. PRIOR TO THE ISSUANCE OF THE REQUIRED SEWER CONSTRUCTION PERMIT, THE CONTRACTOR SHALL OBTAIN AND FILE WITH THE COUNTY ENGINEER COPIES OF A PERMIT TO EXCAVATE IN COUNTY STREETS FROM THE LOS ANGELES COUNTY ROAD DEPARTMENT, A PERMIT FOR EXCAVATIONS AND TRENCHES FROM THE STATE OF CALIFORNIA, DIVISION OF INDUSTRIAL SAFETY AND CERTIFICATE OF WORKERS COMPENSATION INSURANCE WITH THE DEPARTMENT OF COUNTY ENGINEER, 800 SOUTH VERMONT, RM. 406, LOS ANGELES, CALIFORNIA 90008, NAMED AS THE CERTIFICATE HOLDER TO BE NOTICED 30 DAYS PRIOR TO CANCELLATION OF POLICY.

CONSTRUCTION NOTES: 1. WORK SHALL BE CONSTRUCTED ACCORDING TO THE STANDARD SPECIFICATIONS FOR PUBLIC WORKS CONSTRUCTION (1982 EDITION WITH 1983 SUPPLEMENT) AND COUNTY ENGINEER SPECIAL PROVISIONS FOR THE CONSTRUCTION OF SANITARY SEWERS. 2. THE CONTRACTOR SHALL NOTIFY THE ENVIRONMENTAL DEVELOPMENT DIVISION BY TELEPHONE, 738-2100, AT LEAST TWENTY-FOUR HOURS BEFORE STARTING ANY WORK UNDER THIS CONTRACT. 3. HOUSE LATERALS TO BE CONSTRUCTED WITH INVERTS AT PROPERTY LINE 8 FEET BELOW CURB GRADE EXCEPT AS NOTED. 4. WYE OR TEE BRANCHES MAY BE USED FOR CONNECTIONS TO MAIN LINE SEWERS EXCEPT AS NOTED. 5. ALL STRUCTURES SHALL BE EITHER BRICK MANHOLES PER S-3 OR PRECAST CONCRETE MANHOLES PER S-9, EXCEPT AS NOTED. 6. PROVIDE STAKES ON THE PROPERTY LINE OR PROPERTY LINES PRODUCED AT RIGHT ANGLES TO THE SEWER LINE AT THE CENTER LINE OF EACH MANHOLE. 7. MANHOLE TOPS IN IMPROVED PORTS OF WAY TO BE L.B.V.M. WITH FINISHED GRADE. 8. WETTED CLAY PIPE JOINTS SHALL BE TYPE "D" OR "E" PER STANDARD SPECIFICATIONS SECTION 300-2. 9. IF A POWER POLE IS WITHIN THREE FEET OF THE SEWER, THE SEWER SHALL BE ENCASED PER S-25 CASE II, TWO FEET ON EACH SIDE FROM THE POINT OF INTERFERENCE. 10. IF DURING THE COURSE OF CONSTRUCTION IT IS DETERMINED THAT THERE IS LESS THAN FOUR FEET OF COVER OVER THE TOP OF A MAIN LINE SEWER LATERAL OR SCRAM A.B.S.C.P. SEWER WHICH IS NOT INDICATED BY THE PLANS, THE PIPE SHALL BE ENCASED PER S-25 CASE II UNLESS OTHERWISE APPROVED BY THE COUNTY ENGINEER. 11. ALL JOINTS BETWEEN CAST IRON PIPE AND WETTED CLAY PIPE SHALL BE MADE WITH A RUBBER SLEEVE JOINT, TYPE "C" OR "D". 12. THE LOCATION OF BACKFILL CONSTRUCTION SHALL BE AS SHOWN ON THE PLANS. 13. SEWERS TO BE TESTED FOR LEAKAGE PER SECTION 300-1.4 OF THE STANDARD SPECIFICATIONS AND SPECIAL PROVISIONS. 14. RESURFACE ALL TRENCHES WITHIN PAVED AREAS TO MEET L.A. COUNTY ROAD DEPT. OR CALIFORNIA STATE HIGHWAY REQUIREMENTS IN ACCORDANCE WITH PERMITS. 15. ALL JOINTS BETWEEN CAST IRON PIPE AND WETTED CLAY PIPE SHALL BE MADE WITH A RUBBER SLEEVE JOINT, TYPE "C" OR "D". 16. FULL COMPLIANCE WITH SECTION 208.1.2.3 OF THE SPECIAL PROVISIONS WILL BE REQUIRED FOR BACKFILL IN STREETS OR CITY. 17. BACKFILL IN EASEMENT CONSTRUCTION (A) BACKFILL TRENCH AND REPLACE OTHER EARTH SO AS TO ACHIEVE THE NATURAL OR FINISHED GRADES AND SLOPES SHOWN ON THE GRADE PLAN APPROVED FOR THIS DEVELOPMENT BY THE BUILDING AND SAFETY DIVISION. (B) ALL BACKFILL AND EARTH REPLACED SHALL BE COMPACTED TO A MINIMUM OF 90% OF MAXIMUM DENSITY PER A.S.T.M. 970. METHOD OF TEST D998 BY AN APPROVED ACCEPTABLE CERTIFICATION OF SUCH COMPACTION SHALL BE SUBMITTED TO THE ENVIRONMENTAL DEVELOPMENT DIVISION.



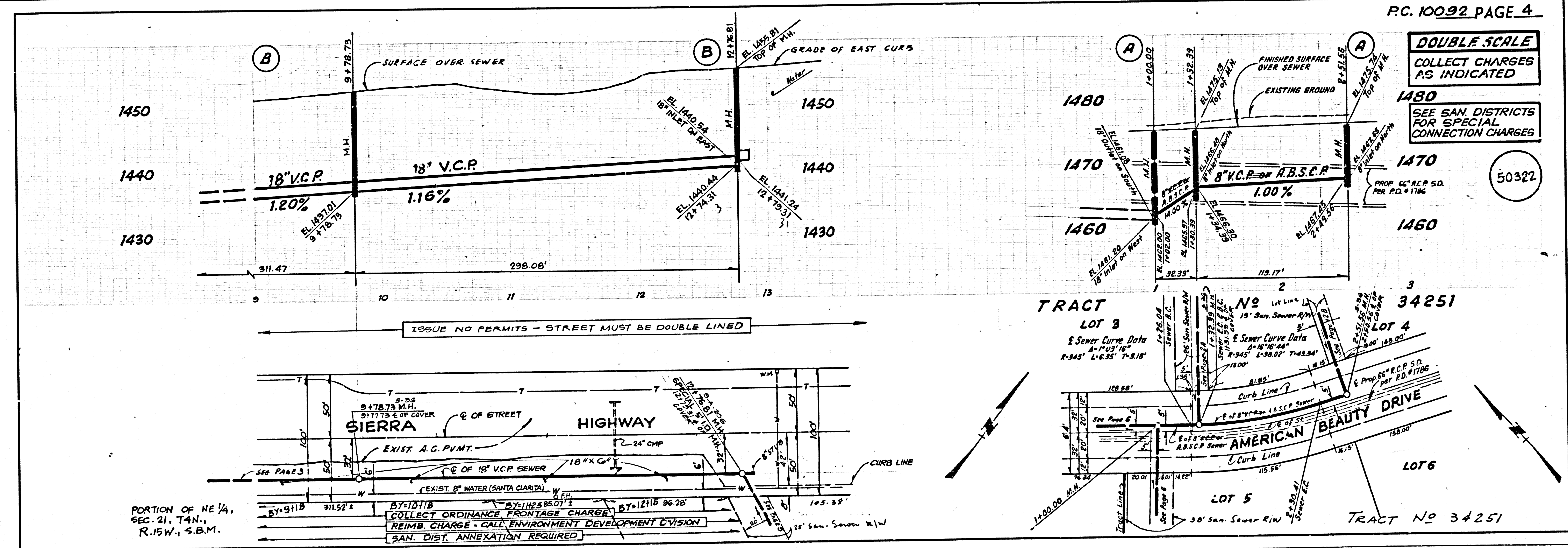
DOUBLE SCALE
COLLECT CHARGES AS INDICATED
SEE SAN. DISTRICTS FOR SPECIAL CONNECTION CHARGES

50321

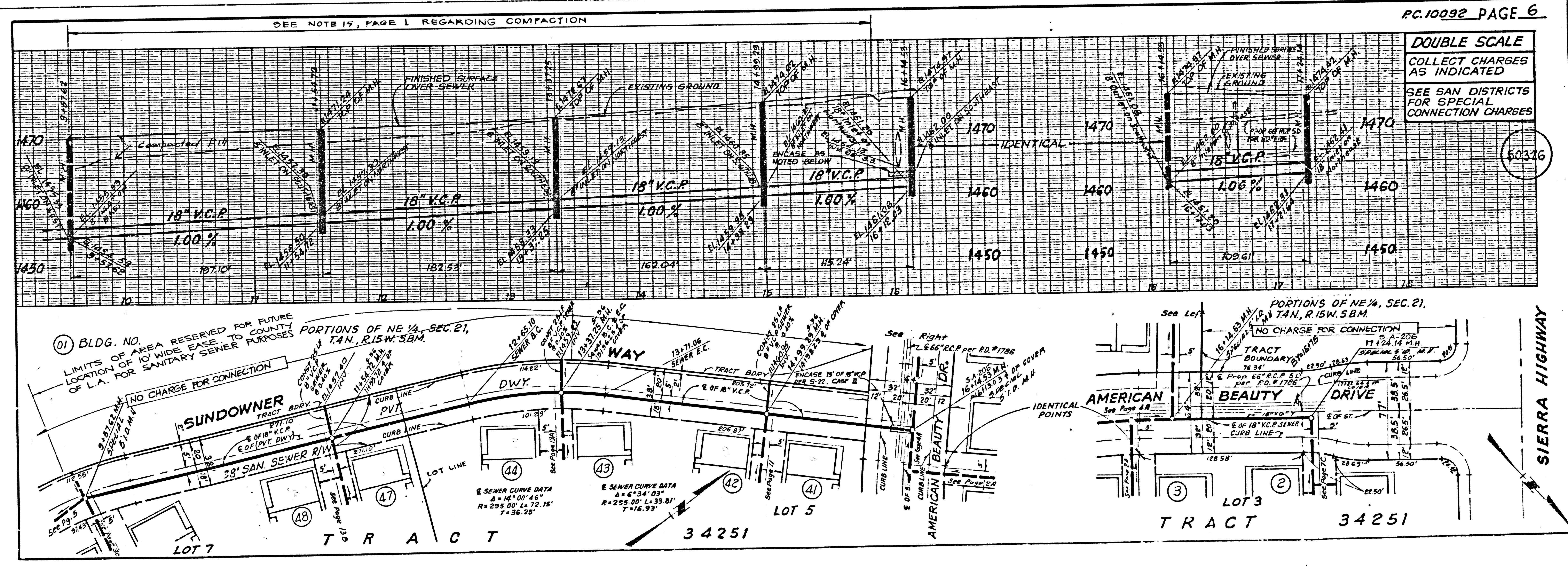
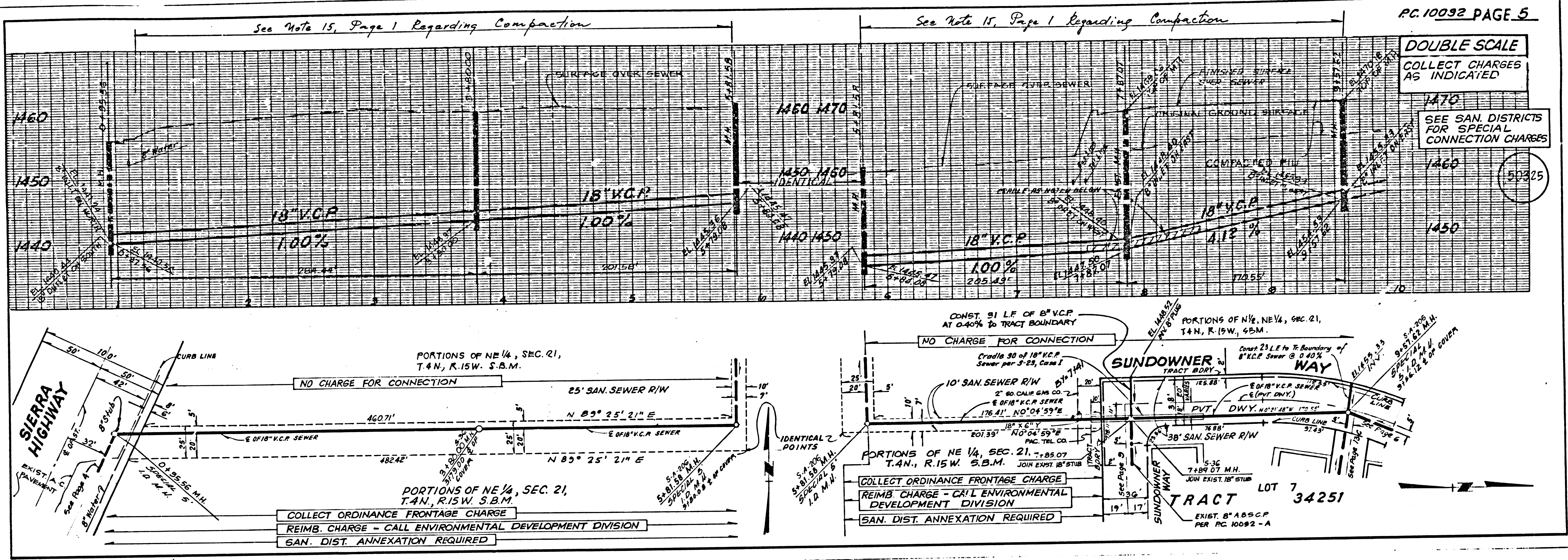


DOUBLE SCALE
COLLECT CHARGES AS INDICATED
SEE SAN. DISTRICTS FOR SPECIAL CONNECTION CHARGES

50322

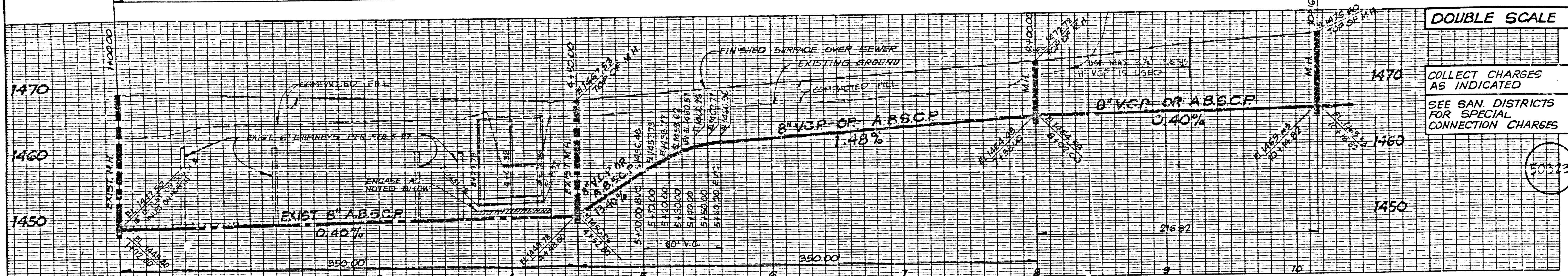


S
SE001 29 ISSUE 9A TCR97



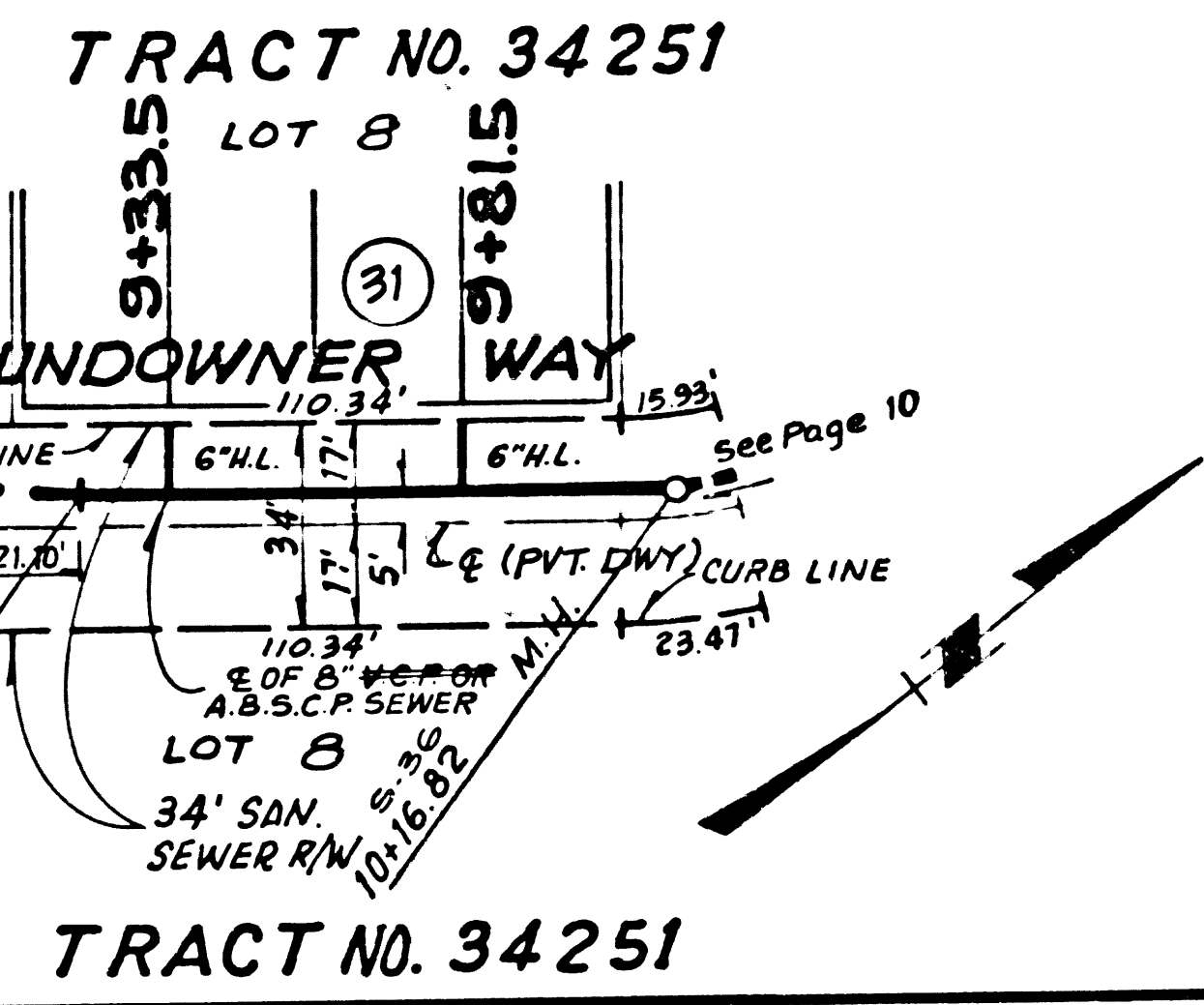
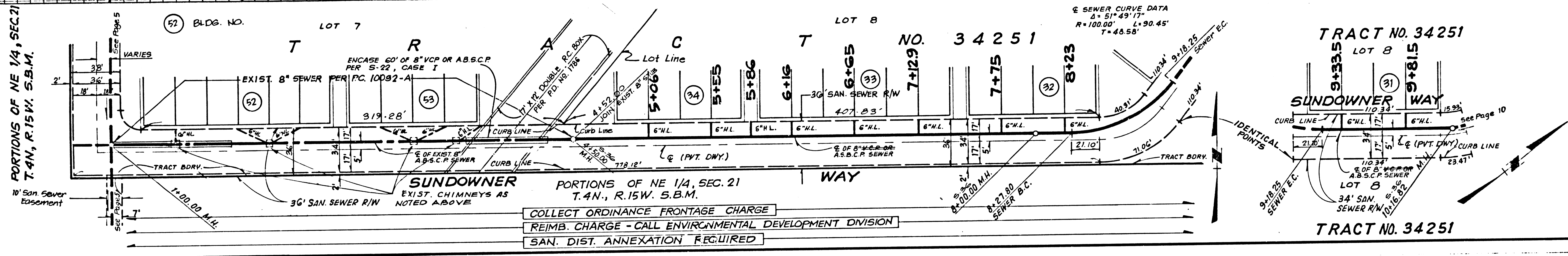
36001 29 1254E 04 TRACT

SEE NOTE 15, PAGE 1 REGARDING COMPACTION



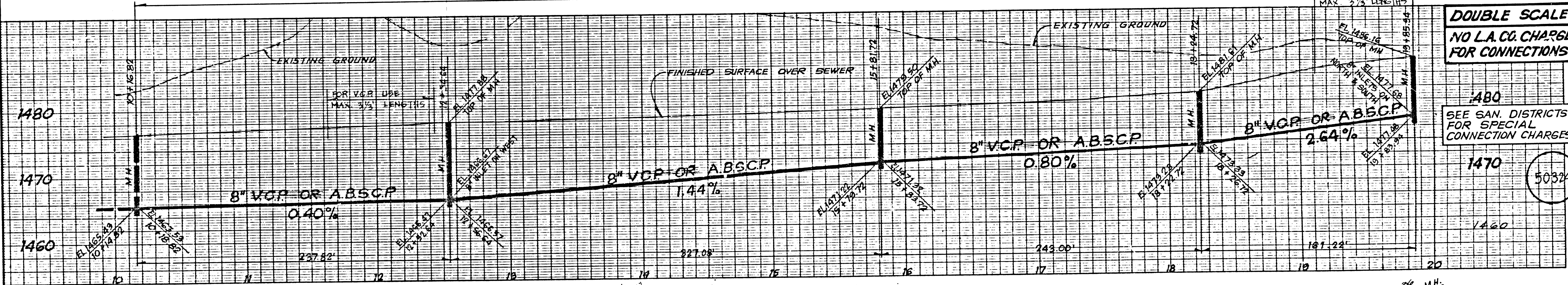
DOUBLE SCALE

COLLECT CHARGES AS INDICATED
SEE SAN DISTRICTS FOR SPECIAL CONNECTION CHARGES



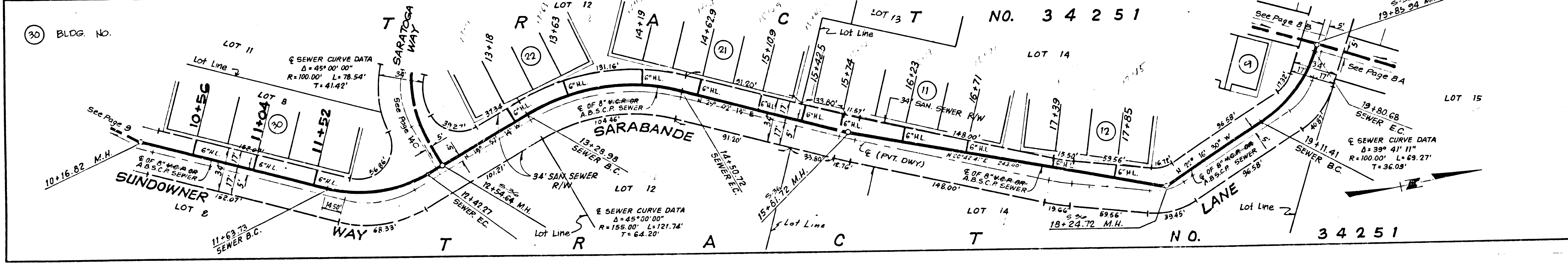
COLLECT ORDINANCE FRONTAGE CHARGE
REIMB. CHARGE - CALL ENVIRONMENTAL DEVELOPMENT DIVISION
SAN. DIST. ANNEXATION REQUIRED

SEE NOTE 15, PAGE 1 REGARDING COMPACTION



DOUBLE SCALE
NO L.A. CO. CHARGE FOR CONNECTIONS

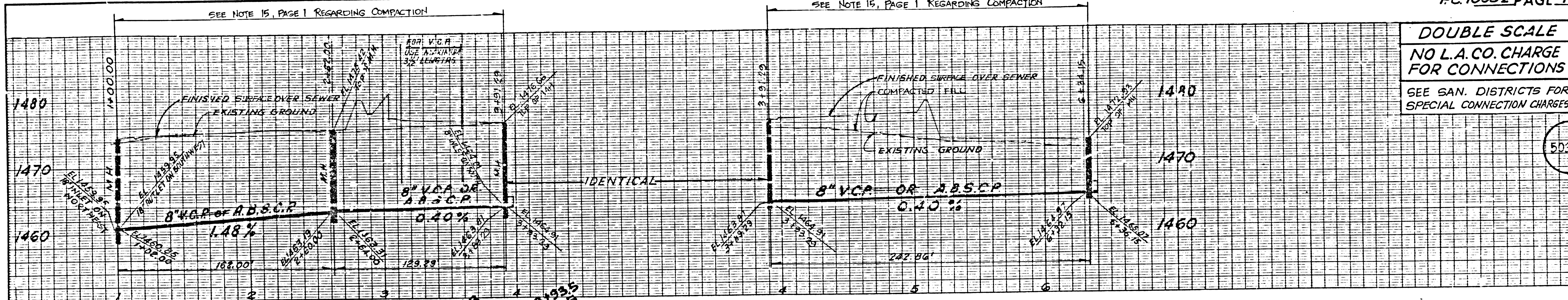
SEE SAN DISTRICTS FOR SPECIAL CONNECTION CHARGES



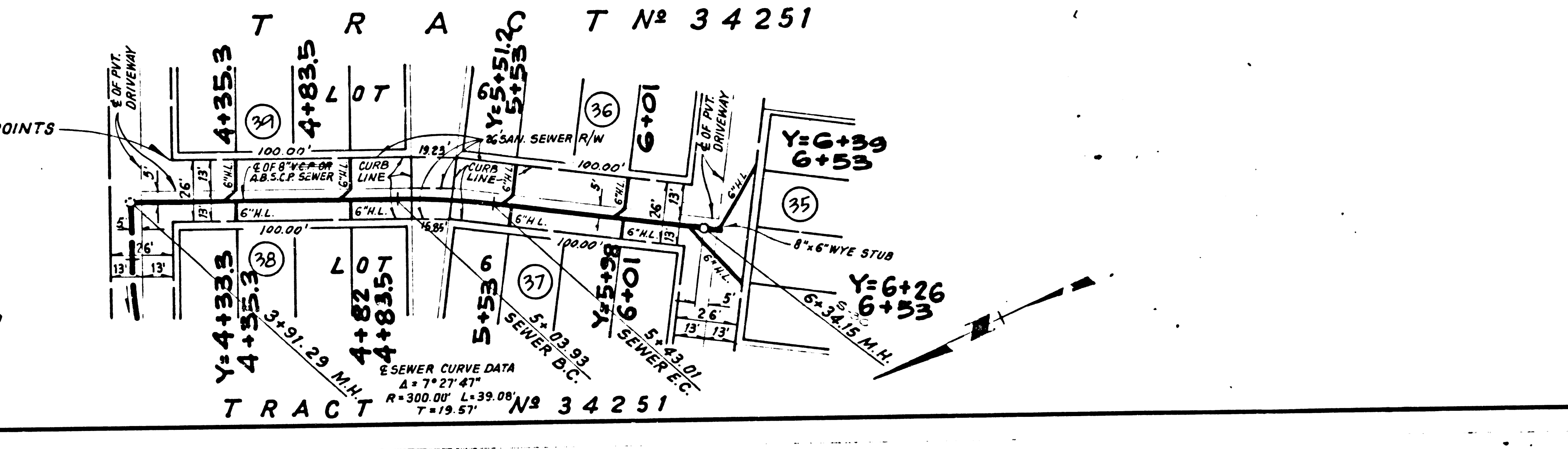
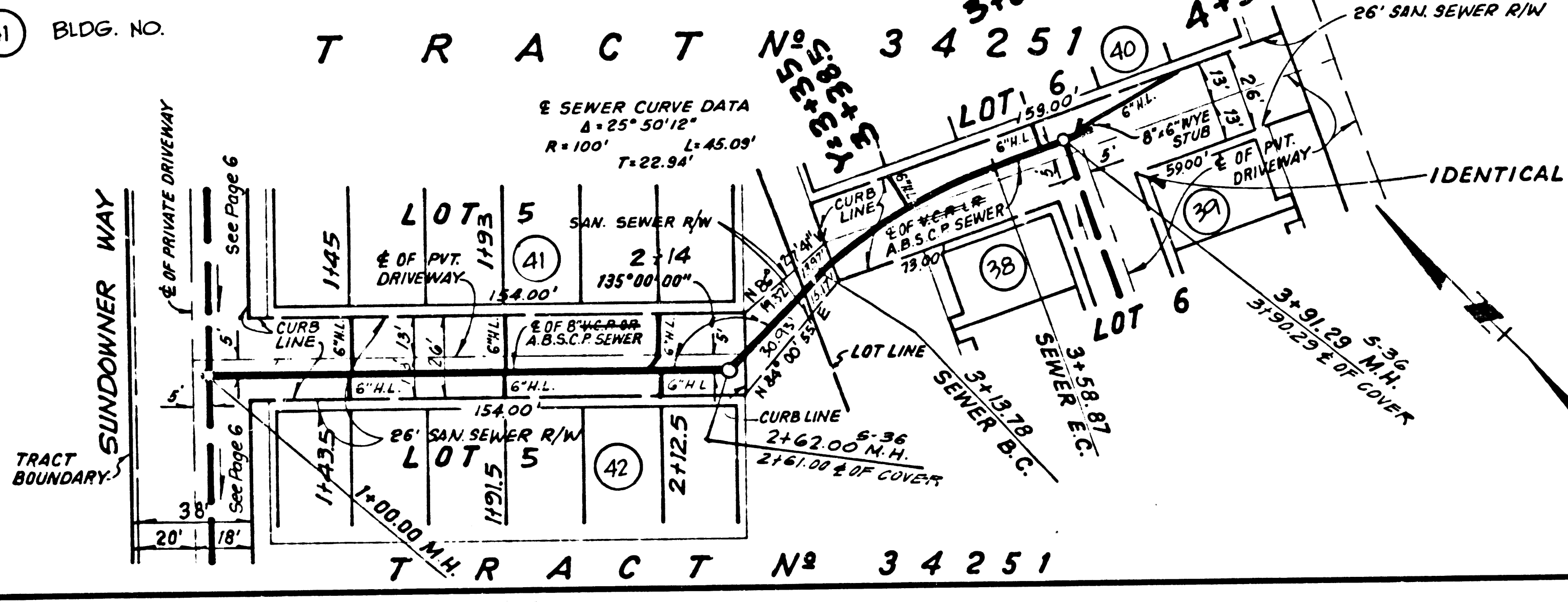
2
SEWAGE TRACT

DOUBLE SCALE
NO L.A. CO. CHARGE
FOR CONNECTIONS
SEE SAN. DISTRICTS FOR
SPECIAL CONNECTION CHARGES

50329

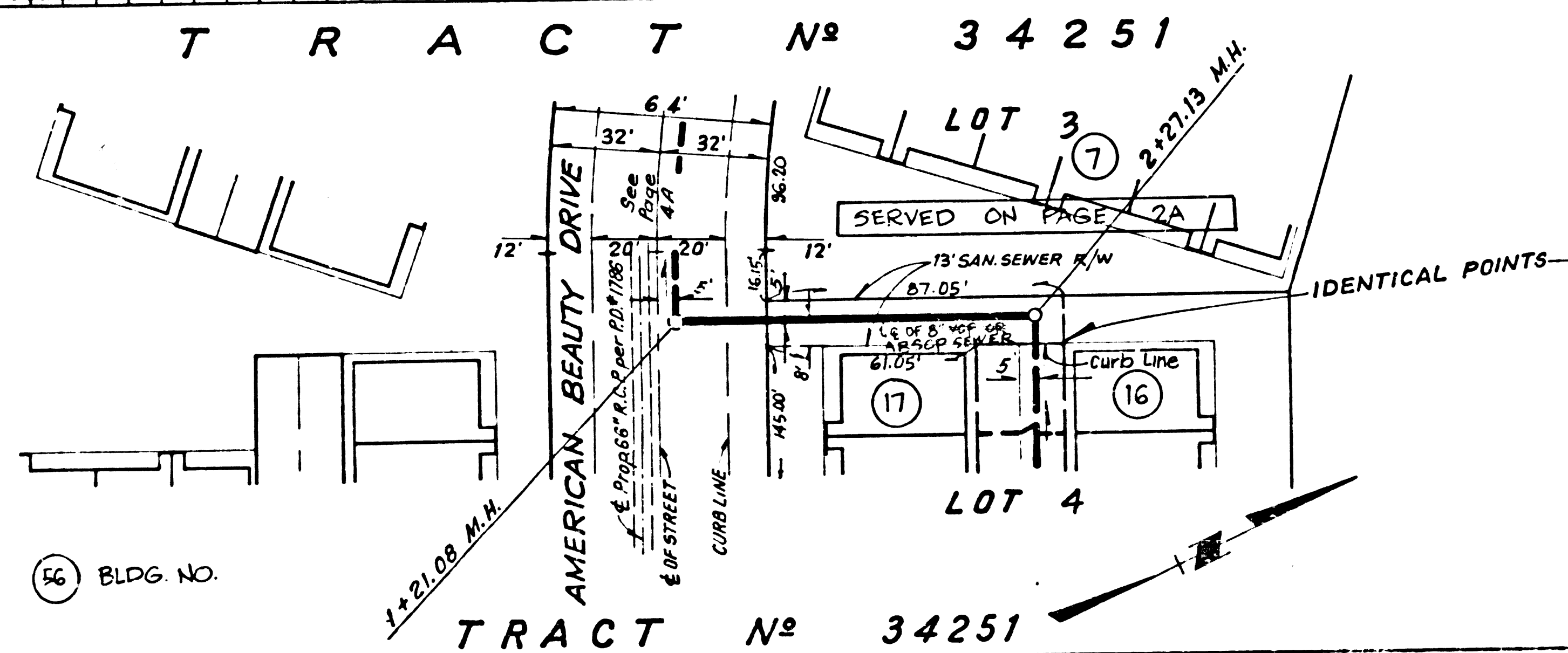
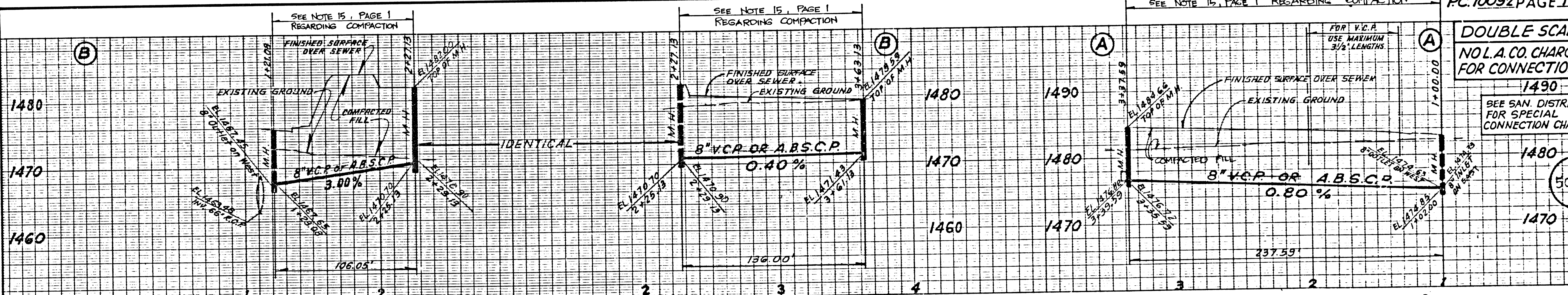


(41) BLDG. NO.

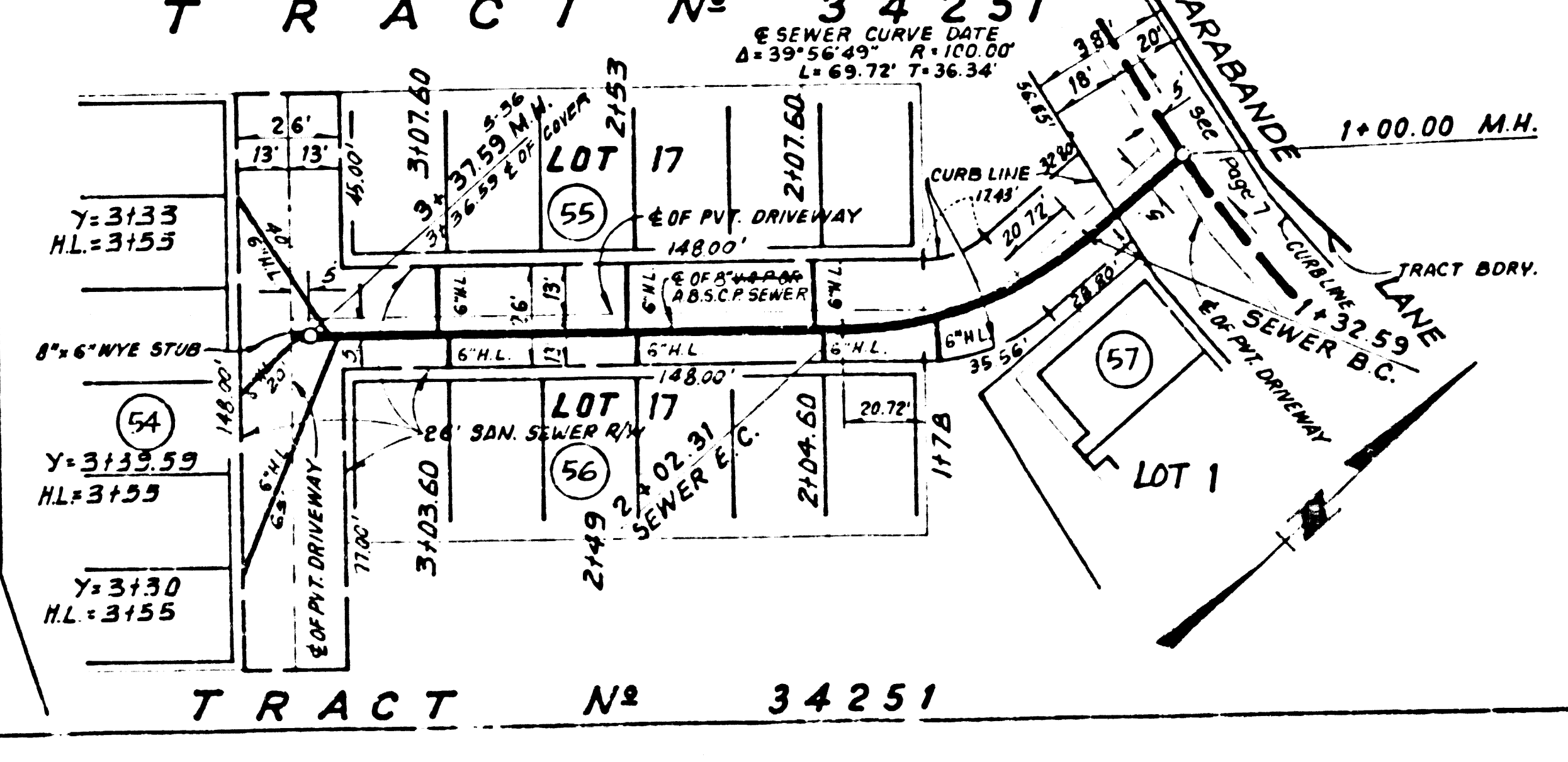
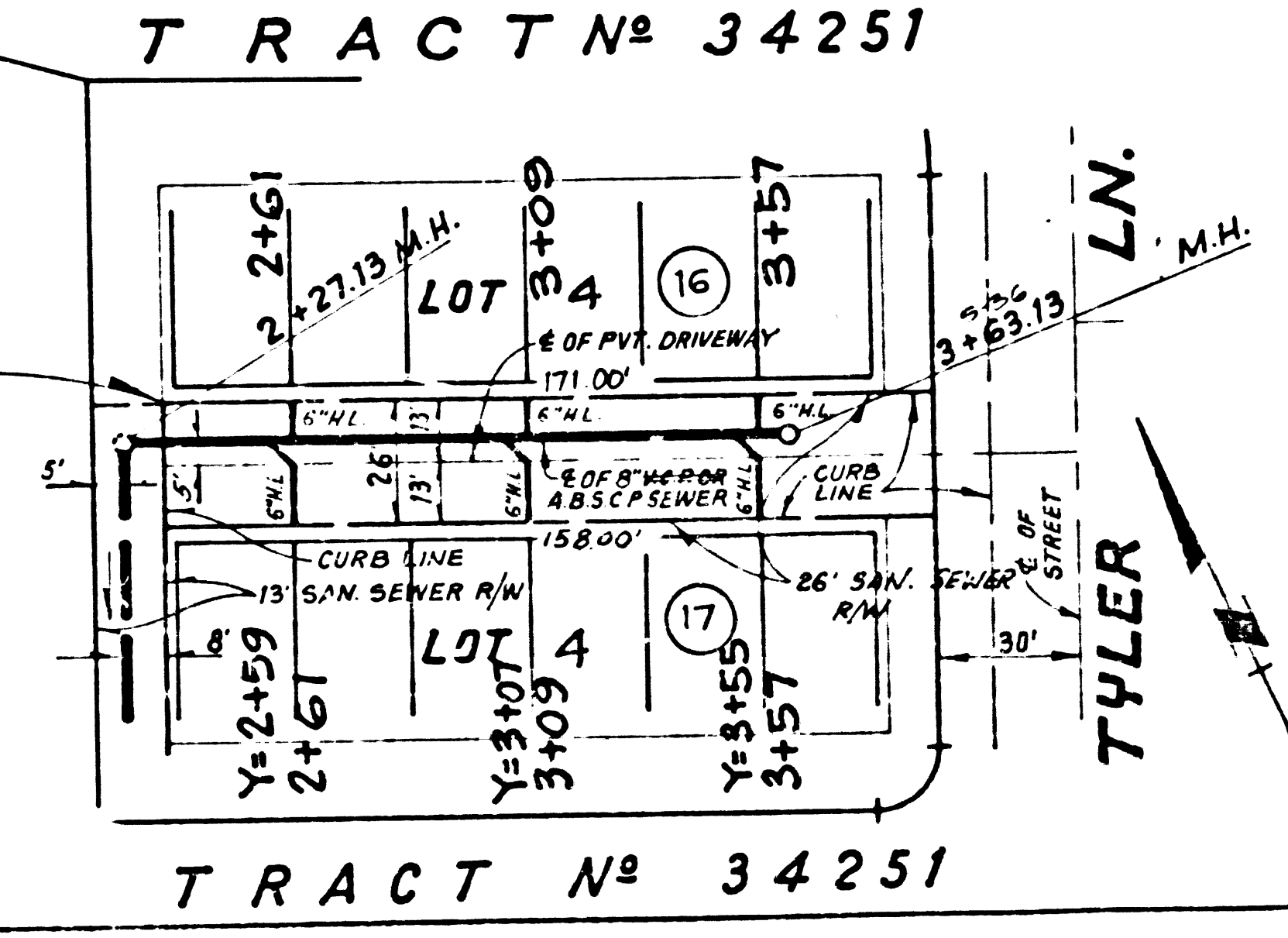


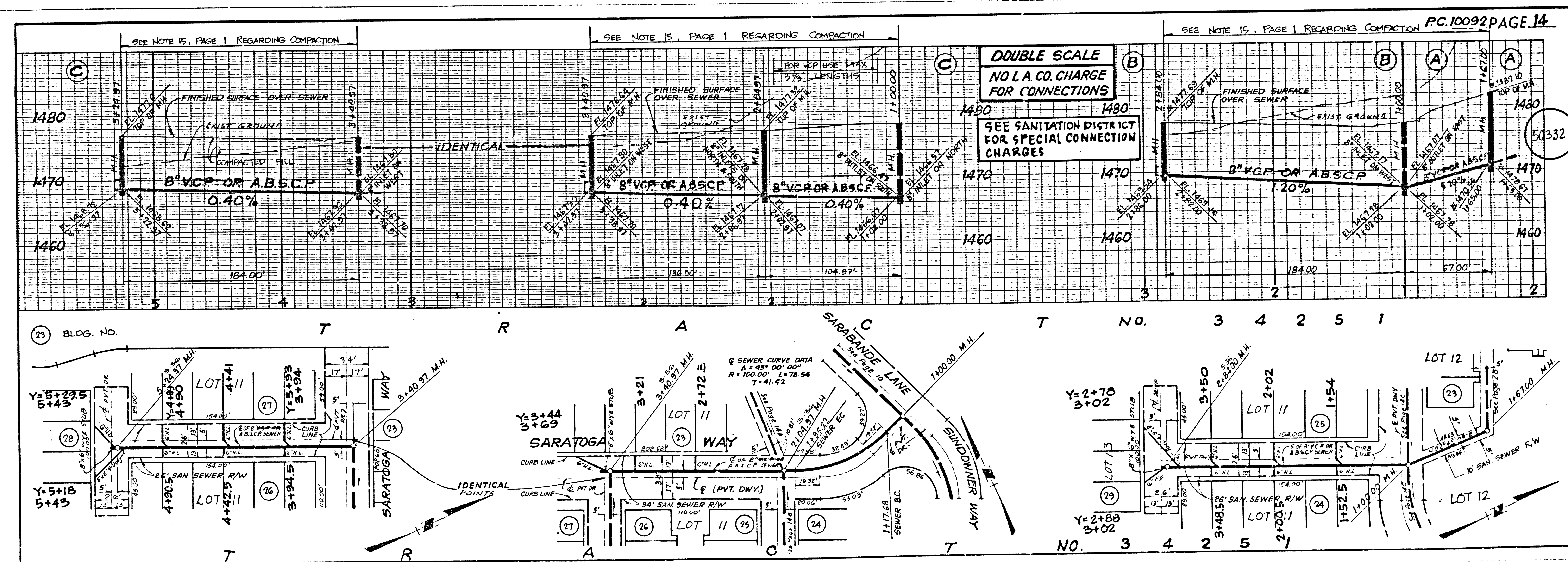
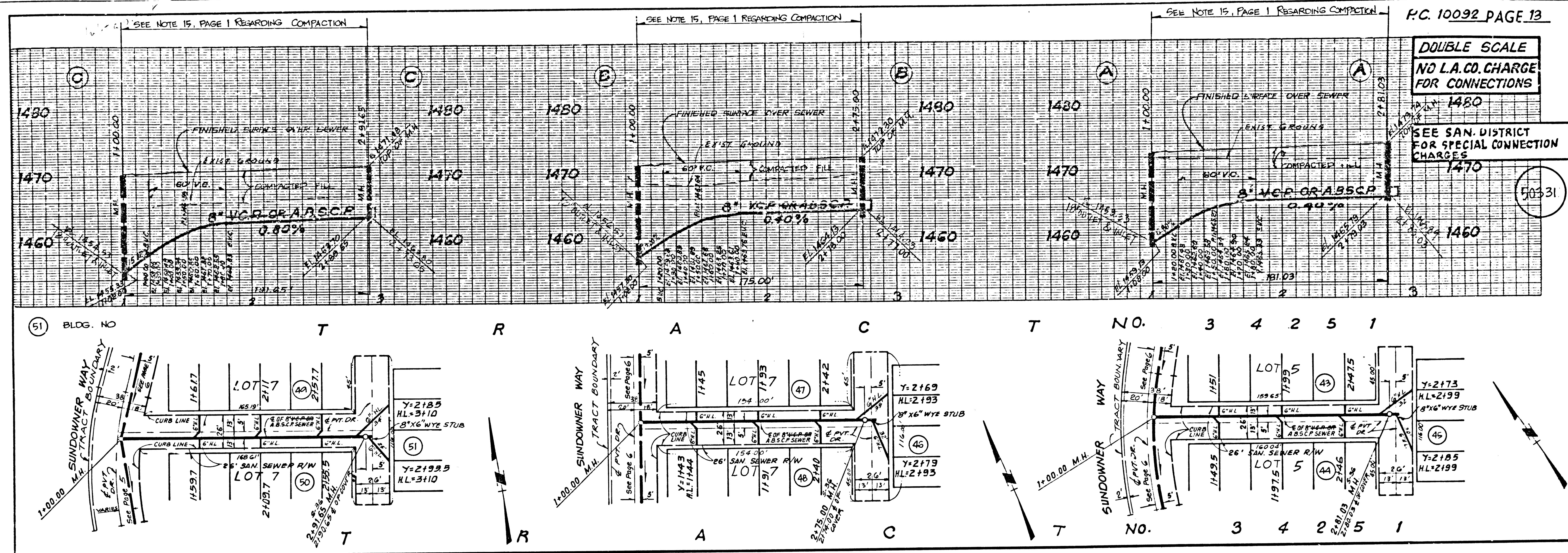
DOUBLE SCALE
NO L.A. CO. CHARGE
FOR CONNECTIONS
SEE SAN. DISTRICT
FOR SPECIAL
CONNECTION CHARGES

50330



(56) BLDG. NO.





SEWEL 39 125AE 9A T3A9T