

SANITARY SEWERS

TO BE CONSTRUCTED IN

TRACT NO. 35979

PRIVATE CONTRACT NO. 10093

C-223
W.S. 90

2 SHEETS, 3 PAGES

50692

SCALE: VERT. 1"=8'
HORIZ. 1"=40'

SEPTEMBER, 1982
PREPARED IN THE OFFICES OF
VANTAGE ENGINEERING COMPANY
6525 1/2 FALLBROOK AVENUE
CANAJO PARK, CA 91307
REG. C. E. No. 14815

THE FOLLOWING LATEST REVISED STANDARD PLANS ON FILE IN THE OFFICE OF THE COUNTY ENGINEER SHALL APPLY IN THE CONSTRUCTION OF THIS PROJECT:

LEGEND	51
MINIMUM PUBLIC SAFETY REQUIREMENTS	52
BRICE MANHOLE	53
STANDARD MANHOLE STEP	517
REPAIRING FOR SEWER PIPE	521
CHASING AND ENCASING	522
WYE OR THE SUPPORT	526
ALLOWABLE TRENCH WIDTH	533
LOCKING MANHOLE FRAME AND COVER	533
NON-REINFORCED PRECAST CONCRETE MANHOLE	534

COUNTY OF LOS ANGELES, CALIFORNIA
STEPHEN J. KOONCE, COUNTY ENGINEER LAS VIRGENES MUNICIPAL WATER DISTRICT
APPROVED *George J. ...* DATE *9/1/82* APPROVED *Heidi ...* DATE *9/1/82*

CHECKED *Ralph ...* DATE *9/1/82*
NO. C.E. NO. 16183

CALIFORNIA BLDG. DIST. 91

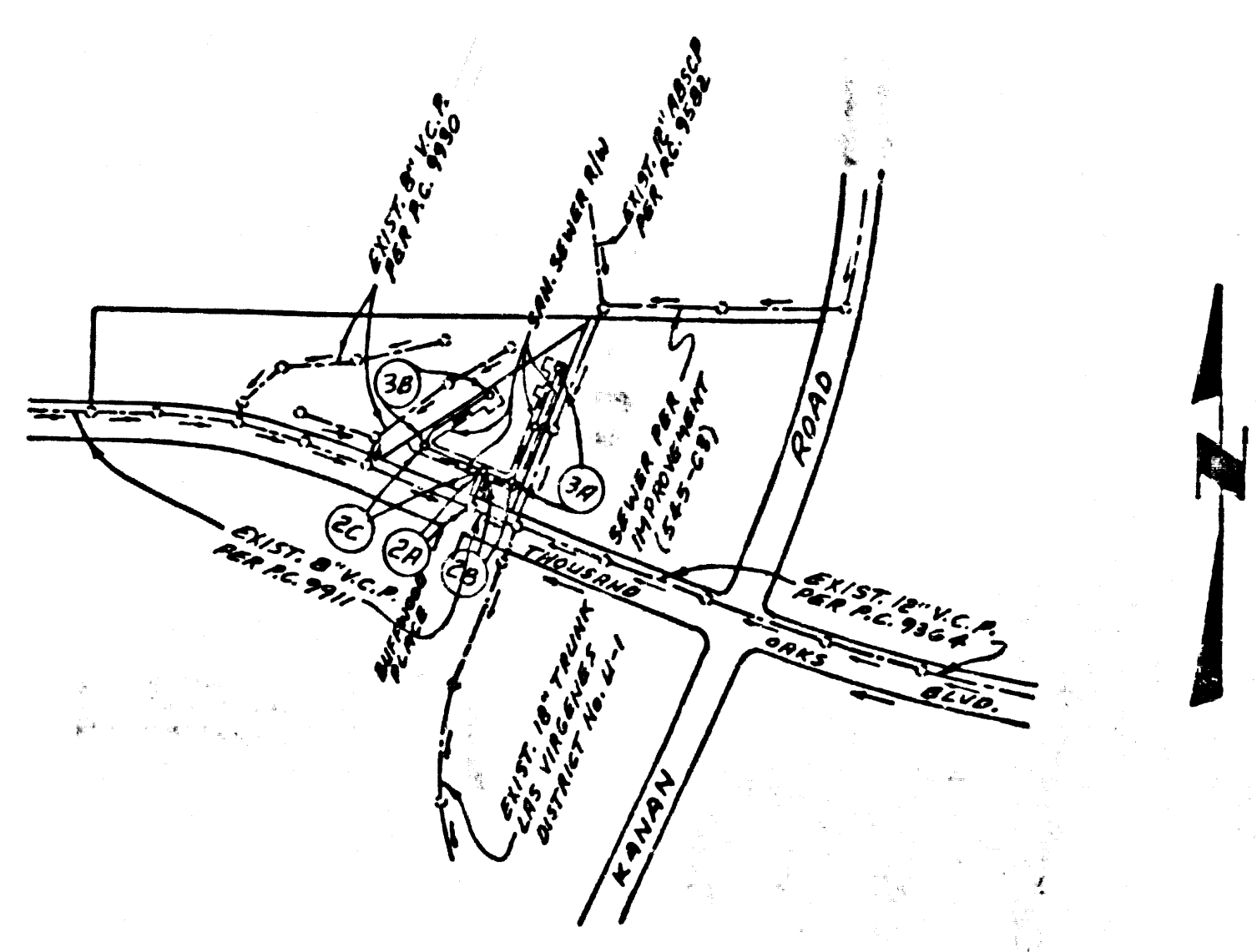
GENERAL NOTES:

- ELEVATIONS ARE IN FEET ABOVE U.S.C. & G.S. SEA LEVEL DATUM OF 1929.
- NO REVISIONS SHALL BE MADE IN THESE PLANS WITHOUT THE APPROVAL OF THE COUNTY ENGINEER.
- NO REPRESENTATIVE OF THE COUNTY ENGINEER WILL VERIFY OR LAY OUT ANY PORTION OF THE WORK.
- GRADES TO WHICH THIS IMPROVEMENT IS TO BE CONSTRUCTED ARE SHOWN ON PLANS AND PROFILE GRADE POINTS FOR TOP OF CURBS, CENTER LINE OF STREETS, OR CENTER LINE OF ALLEYS ARE SHOWN BY CIRCLES ON PROFILES. AT ALL POINTS BETWEEN DESIGNATED POINTS THE GRADE SHALL BE ESTABLISHED SO AS TO CONFORM TO A STRAIGHT LINE DRAWN BETWEEN SAID DESIGNATED POINTS.
- THE PRIVATE ENGINEER SHALL FURNISH THE COUNTY ENGINEER WITH GRADE SHEETS AND STATIONING FOR ALL HOUSE LATERALS AND "T" OR "T" BRANCHES AND SHALL PROVIDE STAKES FOR THEM AT THREE (3) FOOT LOCATIONS WITH STATIONING PLAINLY MARKED. ALL HOUSE LATERALS SHALL BE CONSTRUCTED BY A STRAIGHT ALIGNMENT AT RIGHT ANGLES FROM THE MAIN LINE SEWER EXCEPT AS SHOWN ON THE PLANS. HOUSE LATERALS FROM CHIMNEYS SHALL NOT HAVE AN ANGLE OF LESS THAN 45° WITH THE MAIN LINE SEWER. ANY CHANGE IN ALIGNMENT SHALL BE REQUESTED IN WRITING BY THE PRIVATE ENGINEER.
- THE PRIVATE ENGINEER SHALL FURNISH THE HOUSE LATERAL DEPTH AT THE PROPERTY LINE BELOW THE TOP OF CURB ELEVATION FOR EACH HOUSE LATERAL ON THE GRADE SHEET.
- BEFORE WORK CAN BE STARTED, THE CONTRACTOR MUST OBTAIN A PERMIT TO EXCAVATE IN COUNTY STREETS FROM THE L.A. COUNTY ROAD DEPT., DISTRICT OFFICE NO. 3, AND PAY A FEE TO THE COUNTY ENGINEER, 330 S. YERBONIMO AVE., L.A., CA, 90005, TO COVER THE COST OF CONSTRUCTION INSPECTION AND RECORD PLANS.
- IF WORK IS TO BE DONE IN A STATE HIGHWAY, A PERMIT MUST BE OBTAINED FROM THE STATE OF CALIFORNIA, DIVISION OF HIGHWAYS, 126 SOUTH SPRING STREET, LOS ANGELES, CALIFORNIA.
- APPROVAL OF THIS PLAN BY THE COUNTY OF LOS ANGELES DOES NOT CONSTITUTE A REPRESENTATION AS TO THE ACCURACY OF THE LOCATION OF OR THE EXISTENCE OR NON-EXISTENCE OF ANY UNDERGROUND UTILITY PIPE, OR STRUCTURE WITHIN THE LIMITS OF THIS PROJECT. THIS NOTE APPLIES TO ALL PAGES.
- REFER TO SECTION 7-18.6.1 OF THE STANDARD SPECIFICATIONS, REGARDING SAFETY SIGNS.
- THE UNDERGROUND UTILITY COMPANIES WITHIN THE LIMITS OF THIS PROJECT ARE AS FOLLOWS:
 - GAS: SOUTHERN CALIFORNIA GAS CO.
 - ELECTRIC: SOUTHERN CALIFORNIA EDISON CO.
 - WATER: LAS VIRGENES MUNICIPAL WATER DISTRICT
 - TELEPHONE: PACIFIC TELEPHONE CO.

CONSTRUCTION NOTES:

- WORK SHALL BE CONSTRUCTED ACCORDING TO THE STANDARD SPECIFICATIONS FOR PUBLIC WORKS CONSTRUCTION (1982 EDITION) AND COUNTY ENGINEER'S SPECIAL PROVISIONS FOR THE CONSTRUCTION OF SANITARY SEWERS DATED SEPTEMBER 1978, AND SHALL BE PROSECUTED ONLY IN THE PRESENCE OF THE COUNTY ENGINEER.
- THE CONTRACTOR SHALL NOTIFY THE ENVIRONMENTAL DEVELOPMENT DIVISION BY TELEPHONE (213) 738-2156 AT LEAST TWENTY FOUR HOURS BEFORE STARTING ANY WORK UNDER THIS CONTRACT.
- HOUSE LATERALS TO BE CONSTRUCTED WITH INVERTS AT 1' MIN. LINE & 1' MIN. GRADE EXCEPT AS NOTED.
- WYE OR THE MANHOLES MAY BE USED FOR CONNECTIONS TO MAINLINE SEWERS EXCEPT AS NOTED.
- ALL STRUCTURES SHALL BE EITHER BRICE MANHOLES PER S-34, OR PRECAST CONCRETE MANHOLES PER S-34, EXCEPT AS NOTED.
- PROVIDE STAKES ON THE PROPERTY LINE OR PROPERTY LINES PRODUCED AT RIGHT ANGLES TO THE SEWER LINE AT THE CENTER LINE OF EACH MANHOLE.
- MANHOLE TOPS IN IMPROVED RIGHTS OF WAY TO BE LEVEL WITH FINISHED GRADE.
- VITRIFIED CLAY PIPE JOINTS SHALL BE TYPE "B", OR "C" PER STANDARD SPECIFICATIONS SECTION 306-3.
- IF A POWER POLE IS WITHIN THREE FEET OF THE SEWER, THE SEWER SHALL BE ENCASED, PER S-24, CASE 2, TWO FEET ON EACH SIDE FROM THE POINT OF INTERFERENCE.
- IF DURING THE COURSE OF CONSTRUCTION IT IS DETERMINED THAT THERE IS LESS THAN FOUR FEET OF COVER OVER THE TOP OF A MAIN LINE OR HOUSE LATERAL V.C.P. SEWER WHICH IS NOT INDICATED ON THE PLANS, THE PIPE SHALL BE ENCASED PER S-23, CASE 2, UNLESS OTHERWISE APPROVED BY THE COUNTY ENGINEER.
- ALL JOINTS BETWEEN CAST IRON PIPE AND VITRIFIED CLAY PIPE SHALL BE MADE WITH A RUBBER SLEEVE JOINT, TYPE "C" OR "D", WITH GASKETING IF NECESSARY PER STANDARD SPECIFICATIONS, SECTION 306-2.
- SEWERS TO BE HIGH PRESSURE TESTED FOR LEAKAGE PER SECTION 306-46 OF THE STD. SPECIFICATIONS.
- RESURFACE ALL TRENCHES WITHIN PAVED AREAS TO MEET L.A. COUNTY ROAD DEPT. OR CALIFORNIA STATE HIGHWAY REQUIREMENTS IN ACCORDANCE WITH PERMITS.
- ALL COMPLIANCE WITH SECTION 306-1.5, & 6.0 OF THE SPECIAL PROVISIONS WILL BE REQUIRED FOR STREETS CERTIFICATION OR BACKFILL COMPACTION AND SAND EQUIVALENTS BY A QUALIFIED, REGISTERED TESTING LABORATORY SHALL BE PROVIDED BY THE PERMITTEE PRIOR TO THE ISSUANCE OF A CERTIFICATE OF PARTIAL ACCEPTANCE.

B.M. CY 3006 ELEV. 882.562
ROOM TAG IN SOUTH CURB 2' E. OF B.C.R.
AT S.E. COR. OF KANAN ROAD & THOUSAND
OAKS BLVD. 42' S. 1' 75" E. OF 1/2 INTERSECTION
MALIBU QUAD. 1980



INDEX MAP
PC. 10093 TR. No. 35979
SCALE: 1"=1000'

GENERAL NOTES (CONT.)

12. PRIOR TO ISSUANCE OF THE REQUIRED SEWER CONSTRUCTION PERMIT, THE CONTRACTOR SHALL OBTAIN AND FILE WITH THE COUNTY ENGINEER COPIES OF A PERMIT TO EXCAVATE IN COUNTY STREETS FROM THE LOS ANGELES COUNTY ROAD DEPARTMENT, A PERMIT FOR EXCAVATIONS AND TRENCHES FROM THE STATE OF CALIFORNIA DIVISION OF INDUSTRIAL SAFETY, AND A CERTIFICATE OF WORKMANS COMPENSATION INSURANCE WITH THE DEPARTMENT OF THE COUNTY ENGINEER, 550 SOUTH VERMONT AVE. LOS ANGELES, CALIFORNIA 90020, RM. 406, NAMED AS THE CERTIFICATE HOLDER TO BE NOTIFIED 30 DAYS PRIOR TO CANCELLATION OF THE POLICY.

CONSTRUCTION NOTES (CONT.)

- SPECIAL BACKFILL IN EASEMENT CONSTRUCTION
 - BACKFILL TRENCH AND REPLACE OTHER EARTH SO AS TO ACHIEVE THE NATURAL OR FINISHED GRADES AND SLOPES SHOWN ON THE GRADING PLAN APPROVED FOR THIS DEVELOPMENT BY BUILDING AND SAFETY DIVISION.
 - ALL BACKFILL AND EARTH REPLACED SHALL BE COMPACTED TO A MINIMUM OF 90% MAXIMUM DENSITY PER A.S.T.M. STANDARD METHOD OF TEST D-1557 - 57T AS MODIFIED. ACCEPTABLE CERTIFICATION OF SUCH COMPACTION SHALL BE SUBMITTED TO THE ENVIRONMENTAL DEVELOPMENT DIVISION.

NOTE: ALLOW NO CONNECTIONS UNTIL OUTLET SEWER P.C. 9911 HAS BEEN ACCEPTED BY THE COUNTY OF LOS ANGELES.

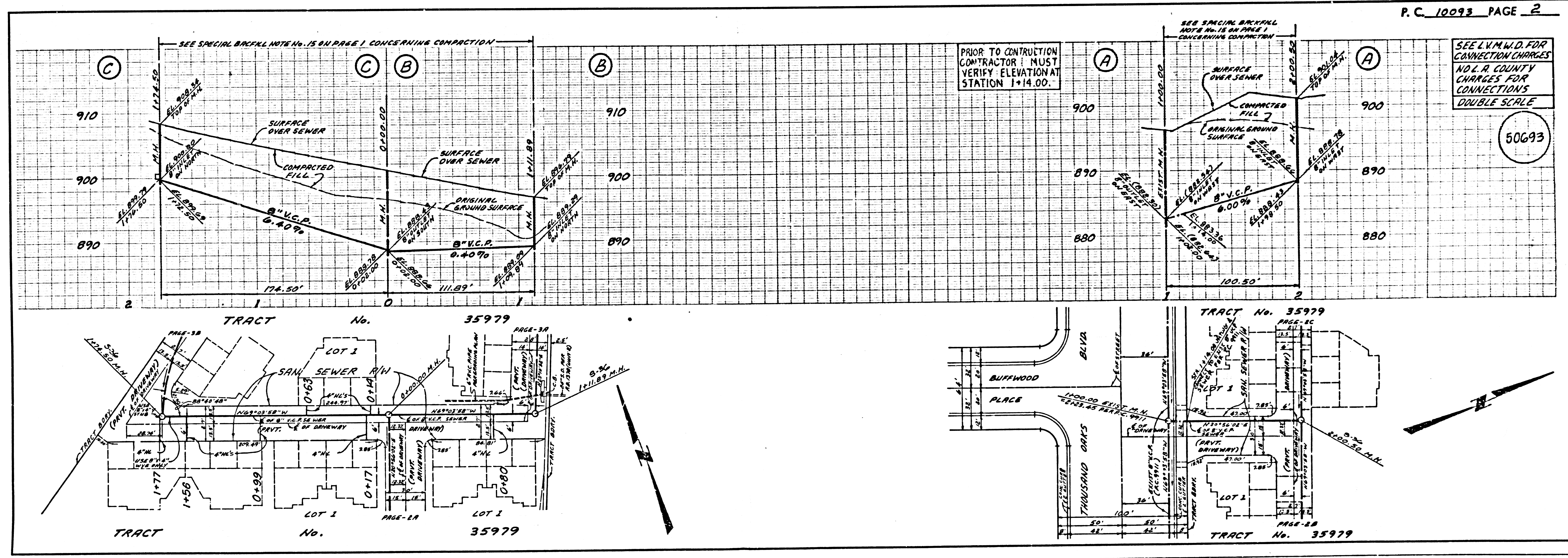
NOTE: NUMBERS IN CIRCLES INDICATE PAGE NUMBERS

REVISION NO. 2 DATE 9-25-84
AS BUILT HOUSE LATERALS.

APPROVED *[Signature]*
OFFICE OF COUNTY ENGINEER

REVISION NO. 1 DATE 8-18-84
RAISED GRADE OF 8" V.C.P. SEWERS FROM STA. 1+02.00 TO STA. 4+53.79 LINE 3 A

APPROVED *[Signature]*
OFFICE OF COUNTY ENGINEER



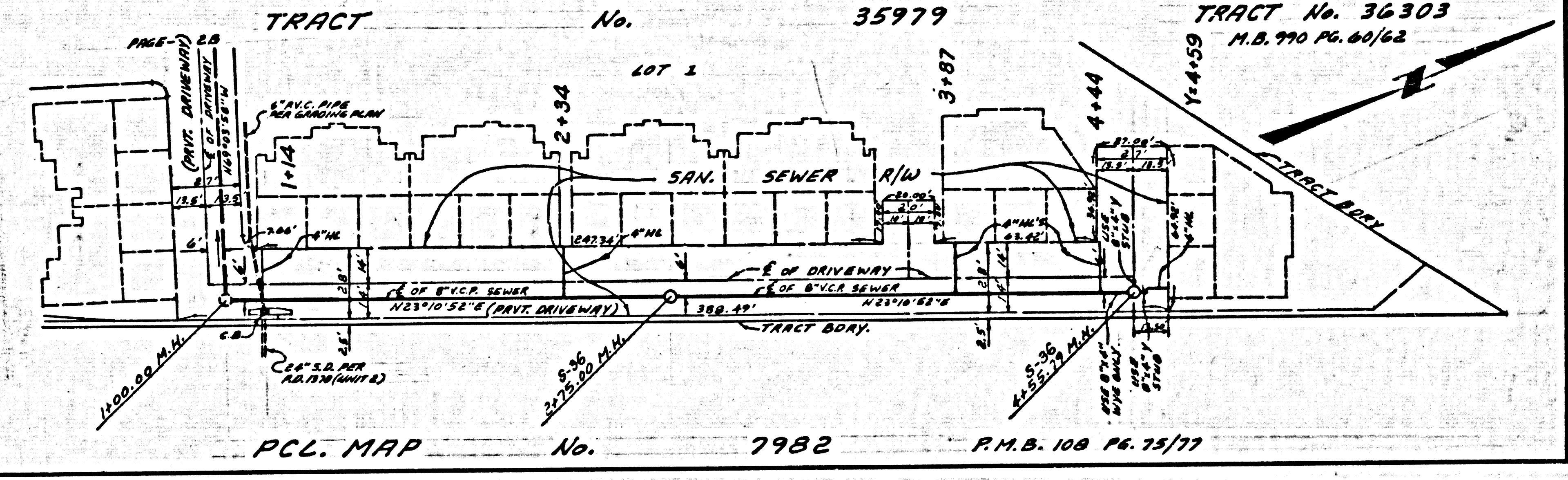
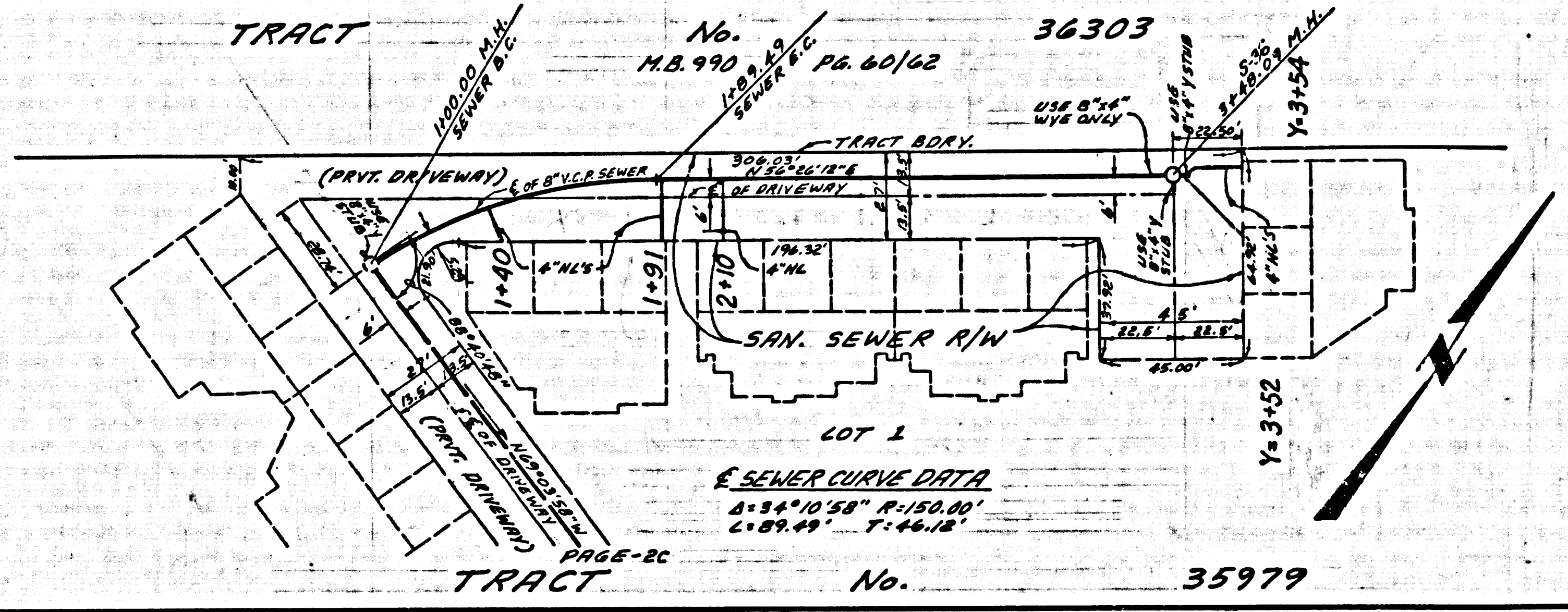
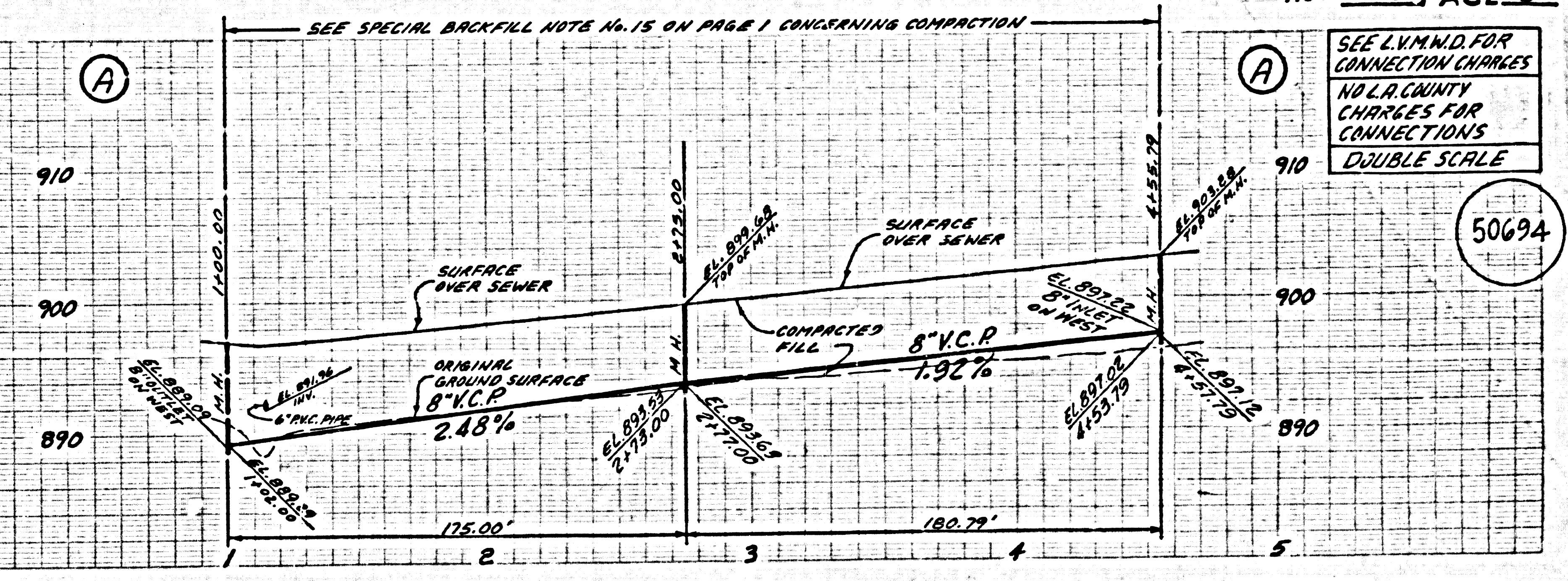
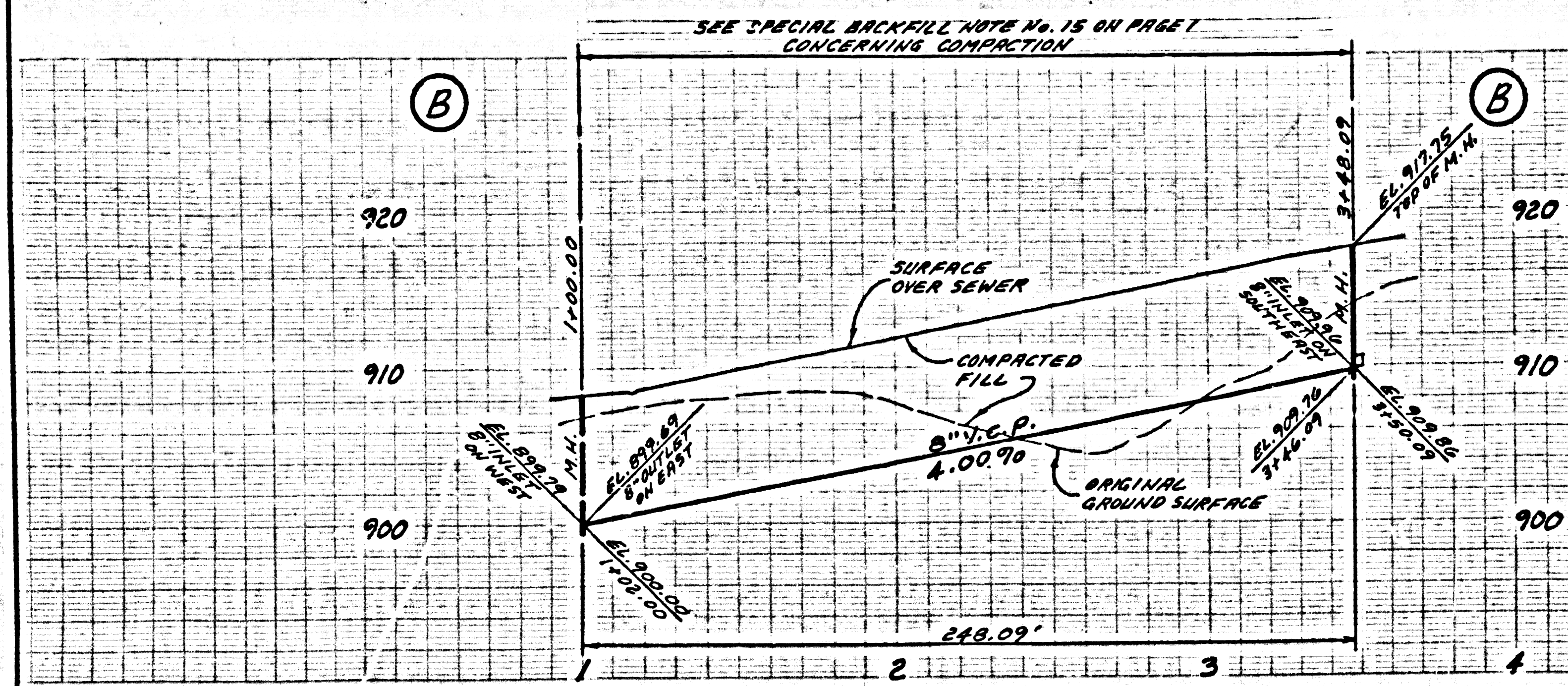
PRIOR TO CONSTRUCTION CONTRACTOR MUST VERIFY ELEVATION AT STATION 1+14.00.

SEE L.V.M.W.D. FOR CONNECTION CHARGES NO L.A. COUNTY CHARGES FOR CONNECTIONS DOUBLE SCALE

50693

SEE L.V.M.M.D. FOR CONNECTION CHARGES
NO L.A. COUNTY CHARGES FOR CONNECTIONS
DOUBLE SCALE

50694



5 ERWIN J.A. 22222 AN TRACT