

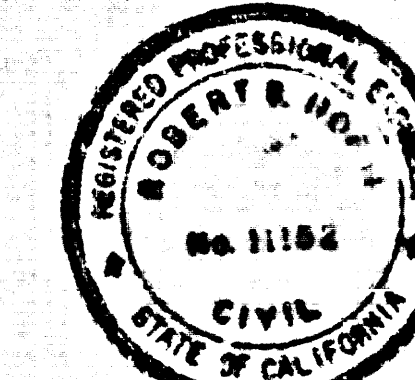
B.M. CL 1068 ELEV. 113.076
 L. 6 ON CONC. HEADWALL & ENTRANCE
 TO CONTRACTORS YARD LEFT N.W. &
 SANTA SUSANA PASS ROAD 0.3 MILE
 W.V. FREEWAY ENTRANCE
 NEWHALL QUAD. 19.72

DOUBLE SCALE

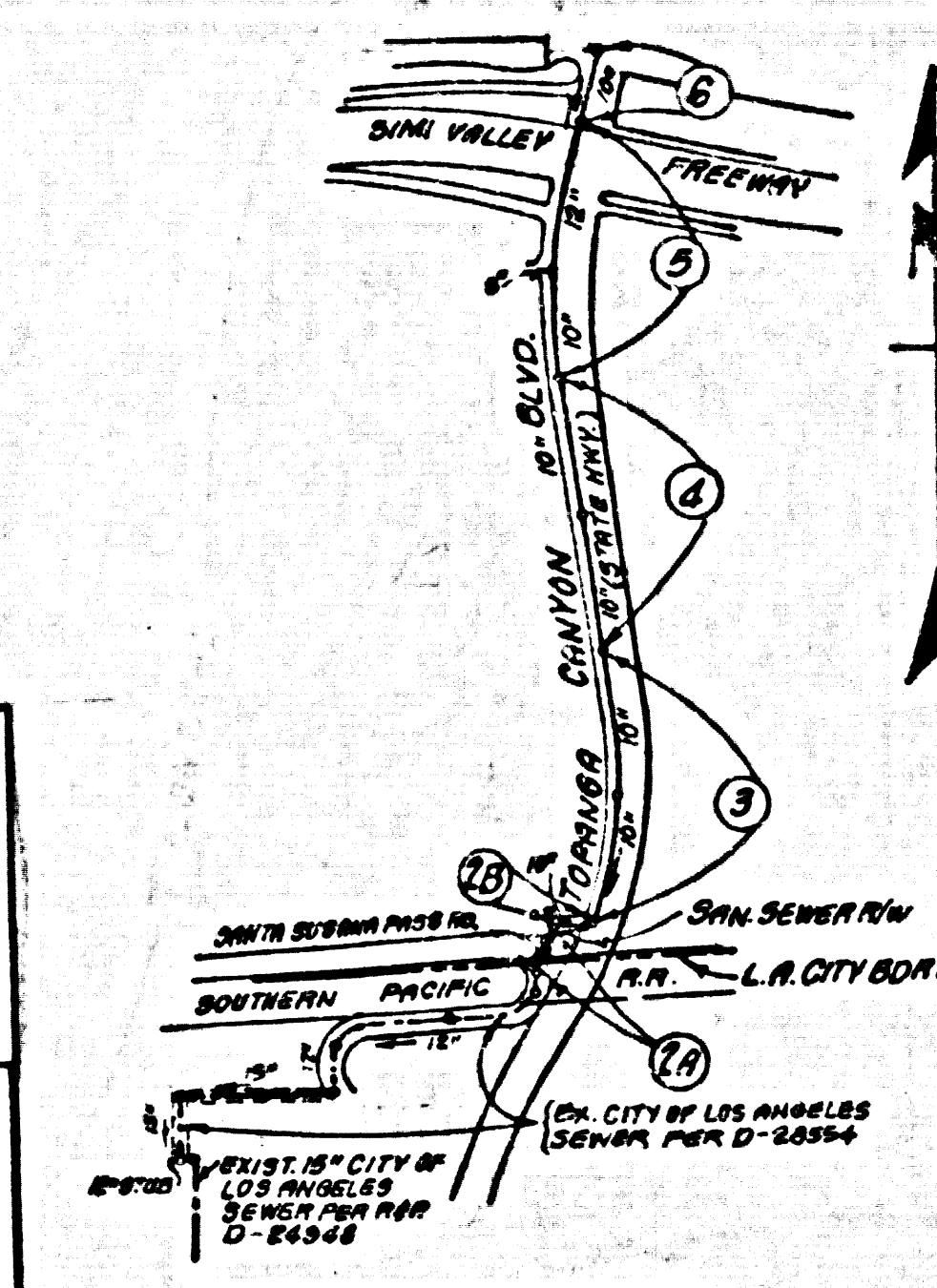
GENERAL NOTES: (CONT'D)
 12. ALL REFERENCE ON THIS PLAN TO THE COUNTY ENGINEER, THE ROAD DEPARTMENT, OR THE
 FLOOD CONTROL DIST. SHALL APPLY TO THOSE APPROPRIATE SECTIONS OF THE
 DEPARTMENT OF PUBLIC WORKS.

TRAFFIC LANE REQUIREMENTS:

ALL TRAFFIC LANES ON MAJOR & SECONDARY STREETS
 (INCLUDING THROUGH, TURNING & PARKING LANES) SHALL BE
 UNOBTENDED FROM 3:30 PM TO 4 AM OF THE NEXT DAY.
 ALL LANE CLOSURES SHALL CONFORM TO THE LATEST
 WATCH MANUAL REQUIREMENTS.
 REVISIONS TO THE TRAFFIC REQUIREMENTS SHALL
 BE BY CHANGE ORDER.



CITY OF LOS ANGELES			
APPROVALS	ENGINEER	DATE	
	Robert T. Quinn	9-7-82	DATE
	Deputy Engineer	9-16-82	DATE
APPROVED			
	Robert T. Quinn	9-16-82	DATE
	City Engineer		DATE



NOTE: NUMBERS IN CIRCLES
 INDICATE PAGE NUMBERS.

INDEX MAP
 P.C. NO. 10094
 SCALE: 1"=600'

REVISION NO. 3 DATE 2-6-87
 PAGE 6, REVISE ALIGNMENT, GRADE AND
 M.H. LOCATION.
 APPROVED: *Sam G. Beck* 1-10-87
 DEPT. OF PUBLIC WORKS DATE

REVISION NO. 2 DATE 8-30-82
 PAGES 5 & 6, ADJUST DISTANCES BETWEEN M.H.'S
 INVERT ELEVATIONS FROM STA. 16123.93 TO STA.
 26+72.72.
 APPROVED: *Sam G. Beck* 8-16-82
 DEPT. OF PUBLIC WORKS

REVISION NO. 1 DATE 5/20/82
 PAGE 2, REVISE LINE (A) FROM STATION 1+47.50
 TO STATION 2+02.50
 APPROVED: *William Miller* 5-25-82
 DEPT. OF PUBLIC WORKS

THE EXISTENCE AND LOCATION OF ANY UNDERGROUND UTILITY PIPES
 OR STRUCTURES SHOWN ON THESE PLANS ARE OBTAINED BY A
 SEARCH OF THE AVAILABLE RECORDS. TO THE BEST OF MY KNOWLEDGE
 THERE ARE NO EXISTING UTILITIES EXCEPT AS SHOWN ON THESE
 PLANS. THE CONTRACTOR IS REQUIRED TO TAKE DUE PRECAUTIONARY
 MEASURES TO PROTECT THE UTILITIES SHOWN AND ALL
 OTHER LINES NOT OF RECORD OR NOT SHOWN ON THESE PLANS.

THE CONTRACTOR SHALL NOTIFY UNDERGROUND SERVICE ALERT
 1-800-482-4133 CALL U.S.A./C. FOR UNDERGROUND LOCATING
 & WORKING DAYS PRIOR TO ANY EXCAVATION.

ALLOW NO CONNECTIONS UNTIL CITY OF L.A. OUTLET SEWER D-28554
 IS DEDICATED FOR PUBLIC USE BY THE CITY OF LOS ANGELES

GENERAL NOTES:

- ELEVATIONS ARE IN FEET ABOVE U.S.C. & G.S. SEA LEVEL DATUM OF 1988.
- NO REVISIONS SHALL BE MADE IN THESE PLANS WITHOUT THE APPROVAL OF THE COUNTY ENGINEER.
- NO REPRESENTATIVE OF THE COUNTY ENGINEER WILL SURVEY OR LAY OUT ANY PORTION OF THE WORK.
- GRADES TO WHICH THE IMPROVEMENT IS TO BE CONSTRUCTED ARE SHOWN ON PLANS AND PROFILES. GRADE POINTS FOR TOP OF CURBS, CENTER LINE OF STREETS, OR CENTER LINE OF ALLEYS ARE SHOWN BY CIRCLES ON PROFILES AT ALL POINTS BETWEEN DESIGNATED POINTS. THE GRADE SHALL BE ESTABLISHED TO CONFORM TO A STRAIGHT LINE DRAWN BETWEEN SAID DESIGNATED POINTS.
- THE PRIVATE ENGINEER SHALL FURNISH THE COUNTY ENGINEER WITH GRADE SHEETS AND STATIONINGS FOR ALL HOUSE LATERALS AND 7" OR 10" BRANCHES AND SHALL PROVIDE STAKES FOR THEM AT THEIR PROPER LOCATIONS WITH STATIONING PLAINLY MARKED. ALL HOUSE LATERALS SHALL BE CONSTRUCTED IN A STRAIGHT ALIGNMENT AT RIGHT ANGLES FROM THE MAIN LINE SEWER EXCEPT AS SHOWN ON THE PLANS. HOUSE LATERALS FROM CHIMNEYS SHALL NOT HAVE AN ANGLE OF LESS THAN 45° WITH THE MAIN LINE SEWER. ANY CHANGE IN ALIGNMENT SHALL BE REQUESTED IN WRITING BY THE PRIVATE ENGINEER.
- THE PRIVATE ENGINEER SHALL FURNISH THE HOUSE LATERAL DEPTH AT THE PROPERTY LINE BELOW THE TOP OF CURB ELEVATION FOR EACH HOUSE LATERAL ON THE GRADE SHEET.
- REPORT WORK CAN BE STARTED. THE CONTRACTOR MUST OBTAIN A PERMIT TO EXCAVATE IN COUNTY STREETS FROM THE L.A. COUNTY ROAD DEPT., DISTRICT OFFICE NO. 1 AND PAY A FEE TO THE COUNTY ENGINEER, 880 S. VERMONT AVENUE, LOS ANGELES, CA 90005, TO COVER THE COST OF CONSTRUCTION INSPECTION AND RECORD PLANS.
- IF WORK IS TO BE DONE IN A STATE HIGHWAY A PERMIT MUST BE OBTAINED FROM THE STATE OF CALIFORNIA, DIVISION OF HIGHWAYS, 120 SOUTH SPRING STREET, LOS ANGELES, CALIFORNIA.
- APPROVAL OF THIS PLAN BY THE COUNTY OF LOS ANGELES DOES NOT CONSTITUTE A REPRESENTATION AS TO THE ACCURACY OF THE LOCATION OF OR THE EXISTENCE OR NON-EXISTENCE OF ANY UNDERGROUND UTILITY PIPE, OR STRUCTURE WITHIN THE LIMITS OF THIS PROJECT. THIS NOTE APPLIES TO ALL PAGES.
- REFER TO SECTION 7.16.41 OF THE STANDARD SPECIFICATIONS, REGARDING SAFETY CLOSURE.
- PRIOR TO THE ISSUANCE OF THE REQUIRED SEWER CONSTRUCTION PERMIT, THE CONTRACTOR SHALL OBTAIN AND FILE WITH THE COUNTY ENGINEER COPIES OF A PERMIT TO EXCAVATE IN COUNTY STREETS FROM THE LOS ANGELES COUNTY ROAD DEPARTMENT, COUNTY ENGINEER'S OFFICE AND TRENCHES FROM THE STATE OF CALIFORNIA, DIVISION OF INDUSTRIAL SAFETY AND CERTIFICATE OF WORKERS COMPENSATION INSURANCE WITH THE DEPARTMENT OF PUBLIC WORKS, 880 SOUTH VERMONT, RM. 644 LL-9 ANGELES, CALIFORNIA 90005, NAMED AS THE CERTIFICATE HOLDER TO BE NOTIFIED 30 DAYS PRIOR TO CANCELLATION OF POLICY.

CONSTRUCTION NOTES:

- WORK SHALL BE CONSTRUCTED ACCORDING TO THE STANDARD SPECIFICATIONS FOR PUBLIC WORKS CONSTRUCTION (1982) EDITION AND COUNTY ENGINEER SPECIAL PROVISIONS FOR THE CONSTRUCTION OF SANITARY SEWERS DATED 8/27/82, 1978 AND SHALL BE PROSECUTED ONLY IN THE PRESENCE OF THE COUNTY ENGINEER.
- THE CONTRACTOR SHALL NOTIFY THE CONSTRUCTION DIVISION - PUBLIC WORKS BY TELEPHONE (213) 475-9281, AT LEAST THIRTY (30) HOURS BEFORE STARTING ANY WORK UNDER THIS CONTRACT.
- HOUSE LATERALS TO BE CONSTRUCTED WITH 1/2" RISE PER FOOT TO EDGE OF 4" W/LINE - EXCEPT AS NOTED.
- PIPE OR TEST BRANCHES MAY BE USED FOR CONNECTIONS TO MAINLINE BEWERS EXCEPT AS NOTED.
- ALL STRUCTURES SHALL BE EITHER BRICK MANHOLES PER S-2 OR PRECAST CONCRETE MANHOLES PER S-2B, EXCEPT AS NOTED.
- PROVIDE STAKES ON THE PROPERTY LINE AND PROPERTY LINES PRODUCED AT RIGHT ANGLES TO THE CENTER LINE AT THE CENTER LINE OF EACH MANHOLE.
- MANHOLE TOPS IN UNIMPROVED AREAS OF WAY TO BE SIX INCHES ABOVE FINISHED GRADE.
- WITHEDED CLAY PIPE JOINTS SHALL BE TYPE "O" OR "N" PER STANDARD SPECIFICATIONS SECTION 289-2.
- IF A POWER POLE IS WITHIN THREE FEET OF THE SEWER, THE SEWER SHALL BE ENCASED PER S-2B, CASE II, TWO FEET ON EACH SIDE FROM THE POINT OF INTERFERENCE.
- IF DURING THE COURSE OF CONSTRUCTION IT IS DETERMINED THAT THERE IS LESS THAN FOUR FEET OF COVER OVER THE TOP OF A MAIN LINE OR HOUSE LATERAL SEWER WHICH IS NOT INDICATED ON THE PLANS, THE PIPE SHALL BE ENCASED PER S-2B, CASE II UNLESS OTHERWISE APPROVED BY THE COUNTY ENGINEER.
- ALL JOINTS BETWEEN CAST IRON PIPE AND WITHEDED CLAY PIPE SHALL BE MADE WITH A RUBBER SLEEVE JOINT, TYPE "O" OR "N", (WITH BUSHINGS IF NECESSARY) PER STANDARD SPECIFICATIONS, SECTION 289-2.
- SEWERS TO BE TESTED FOR LEAKAGE PER SECTION 289-1.4 OF THE STANDARD SPECIFICATIONS AND SPECIAL PROVISIONS.
- RESURFACE ALL TRENCHES WITHIN PAVED AREAS TO MEET L.A. COUNTY ROAD DEPT. OR CALIFORNIA STATE HIGHWAY REQUIREMENTS IN ACCORDANCE WITH PERMITS.
- FULL COMPLIANCE WITH SECTION 289-1.5.2 OF THE SPECIAL PROVISIONS WILL BE REQUIRED FOR BACKFILL IN STREETS. CERTIFICATION OF BACKFILL COMPACTION AND SAND EQUIVALENTS BY A QUALIFIED, REGISTERED TESTING LABORATORY SHALL BE PROVIDED BY THE CONTRACTOR PRIOR TO THE ISSUANCE OF A CERTIFICATE OF MATERIAL ACCEPTANCE.
- SPECIAL BACKFILL IN EASEMENT CONSTRUCTION: (A) BACKFILL TRENCH AND REPLACE OTHER EARTH SO AS TO ACHIEVE THE NATURAL OR FINISHED GRADES AND SLOPES SHOWN ON THE DRAINAGE PLAN APPROVED FOR THIS DEVELOPMENT BY THE BUILDING AND SAFETY DIVISION; (B) ALL BACKFILL AND EARTH REPLACEMENTS SHALL BE COMPACTED TO A MINIMUM OF 90% OF MAXIMUM DENSITY PER AASHTO METHOD OF TEST CONDUCTED BY AN APPROVED, ACCEPTABLE CERTIFICATION OF SUCH COMPACTION SHALL BE SUBMITTED TO THE CONSTRUCTION DIVISION - PUBLIC WORKS.
- SEWER TRENCH SURFACING WITHIN THE CITY OF LOS ANGELES SHALL BE EQUIVALENT TO THE EXISTING.

SANITARY SEWERS

TO BE CONSTRUCTED IN
TOPANGA CANYON BOULEVARD

PRIVATE CONTRACT NO. 10094
 INDEX C211-214

W.S. 60
 3 SHEETS, 6 PAGES

51763

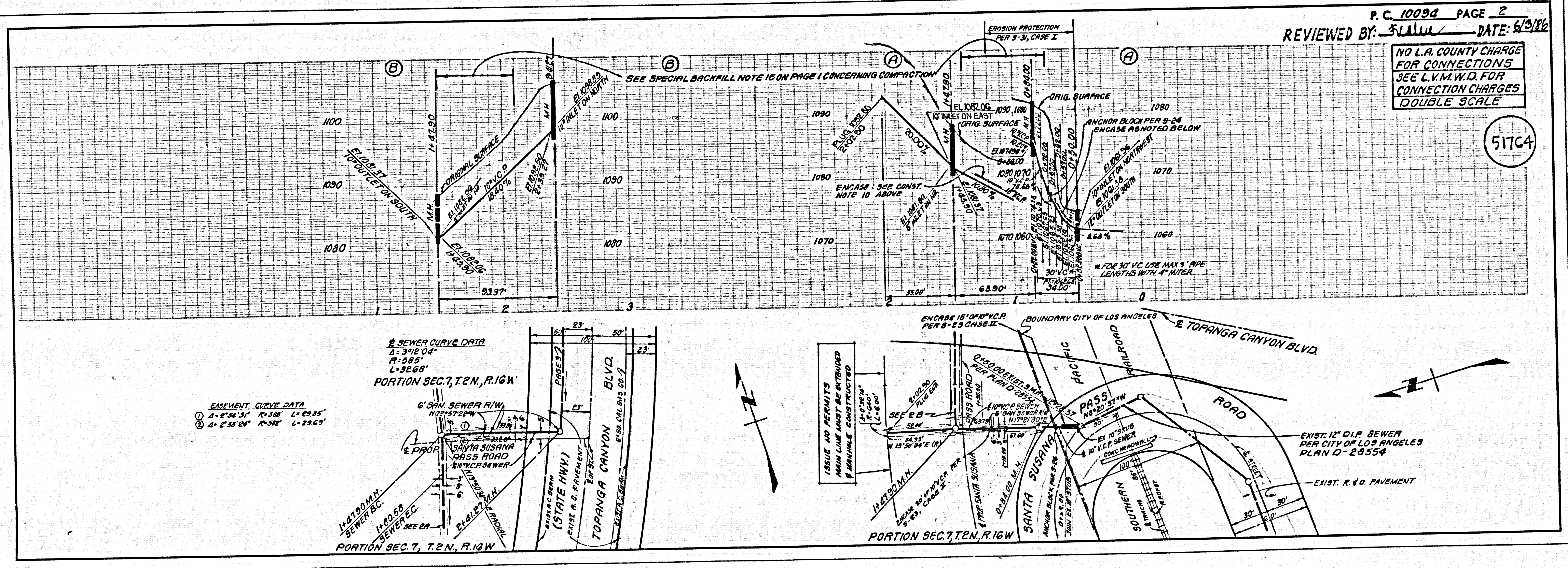
SCALE: VERT. 1"=8'
 HORIZ. 1"=80'
 AUGUST, 1982
 W.S. 60
 PREPARED IN THE OFFICES OF
 E.L. PEARSON & ASSOCIATES
 1555 W. REDONDO BEACH BLVD. GARDENA 90247
 BY: *Robert T. Quinn*
 REG. C.E. No. 24388

THE FOLLOWING LATEST REVISED STANDARD PLANS ON FILE IN THE OFFICE OF THE COUNTY ENGINEER SHALL APPLY IN THE CONSTRUCTION OF THIS PROJECT.

MANHOLE	5-2
MANHOLE PUBLIC SAFETY ENCLOSURES	5-2
BRICK MANHOLE	5-2
STANDARD MANHOLE STEP	5-17
BRICKS FOR SEWER PIPE	5-2
CHIMNEY AND ENCASING	5-2
WYE OR TE SUPPORT	5-2
ALLOWABLE TRENCH WIDTH	5-2
LOCKING MANHOLE FRAME AND COVER	5-2
NON-REINFORCED PRECAST CONCRETE MANHOLES	5-2
REINFORCED PRECAST CONCRETE MANHOLES	5-2
TYPE OF LOS ANGELES STATIONING PLANS	5-10
SEWER MANHOLES - GENERAL	5-10
SEWER MANHOLES	5-10

COUNTY OF LOS ANGELES, CALIFORNIA

THOMAS A. TIDEMANSON DIRECTOR OF PUBLIC WORKS
 APPROVED: *Carl J. Quinn* 4/3/82
 N.W. STONES - CHIEF ENGINEER
 APPROVED: *Robert T. Quinn* 8-28-82
 DATE 6/3/86
 REG. C.E. NO. 16881
 CALAB2388 BLDG. DIST. 31



P.C. 10094 PAGE 2
 REVIEWED BY: *William Miller* DATE: 6/3/86

NO L.A. COUNTY CHARGE
 FOR CONNECTIONS
 SEE L.V.M.W.D. FOR
 CONNECTION CHARGES
 DOUBLE SCALE

51764

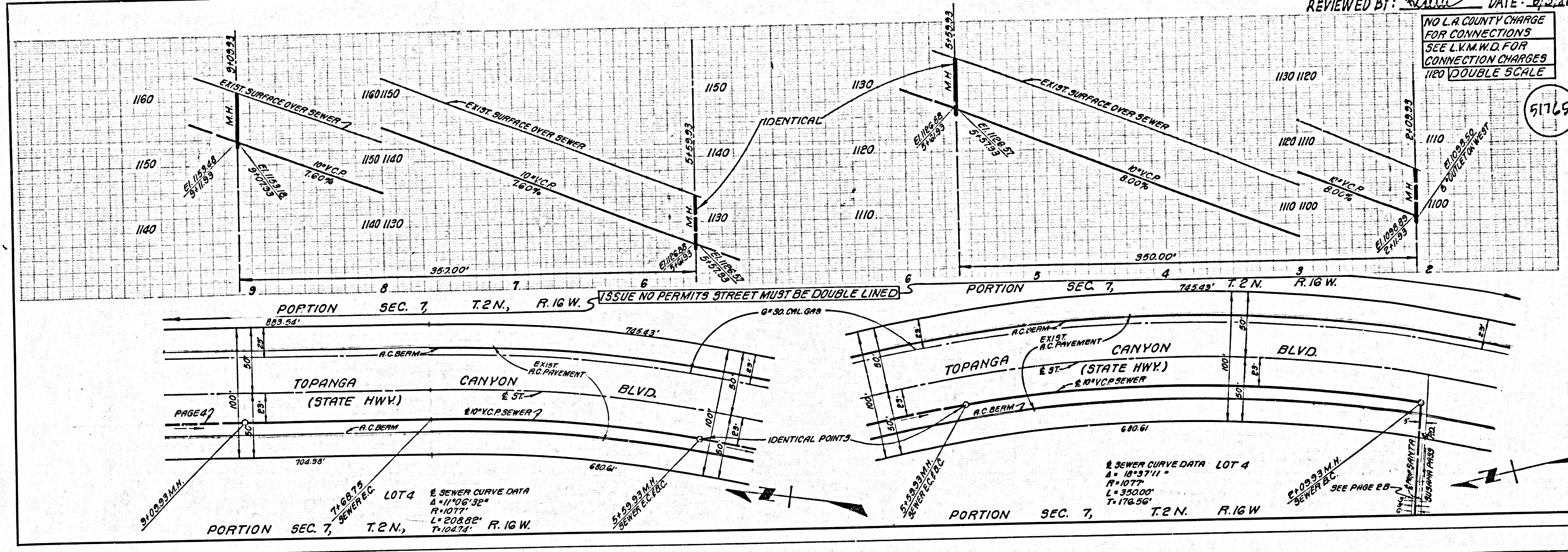
SEWER CURVE DATA
 Δ = 342.04'
 R = 585'
 L = 326.68'
 PORTION SEC. 7, T.2N., R.16W

EASEMENT CURVE DATA
 Δ = 8°34'31" R = 585' L = 28.85'
 Δ = 2°55'26" R = 585' L = 28.65'

PC 10094 PAGE 3
REVIEWED BY: *Scullin* DATE: 6/2/86

NO L.A. COUNTY CHARGE FOR CONNECTIONS
SEE L.V.M.W.D. FOR CONNECTION CHARGES
1180 DOUBLE SCALE

51765

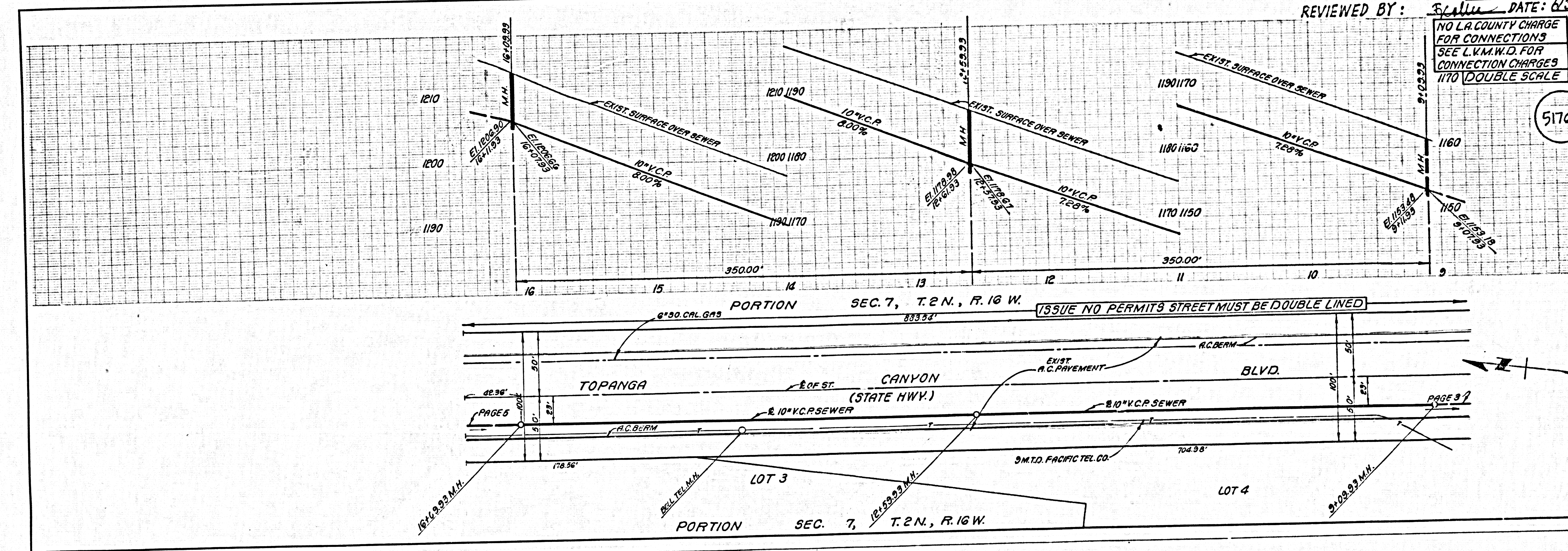


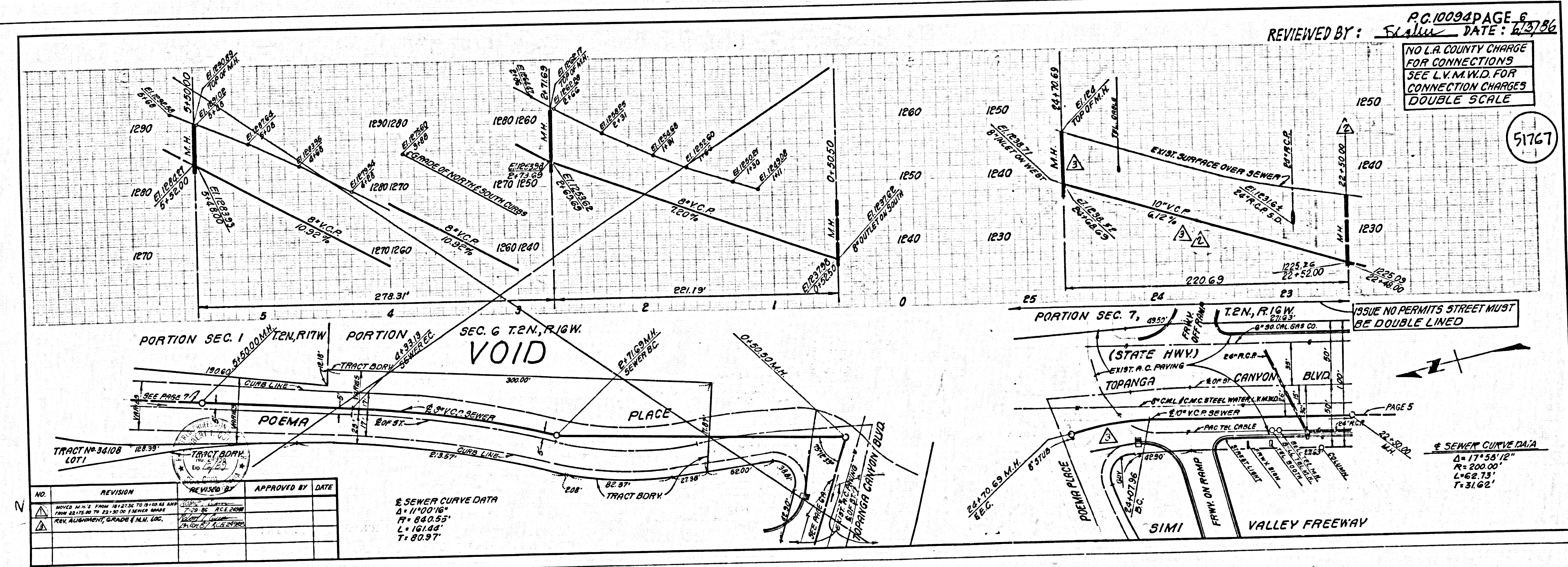
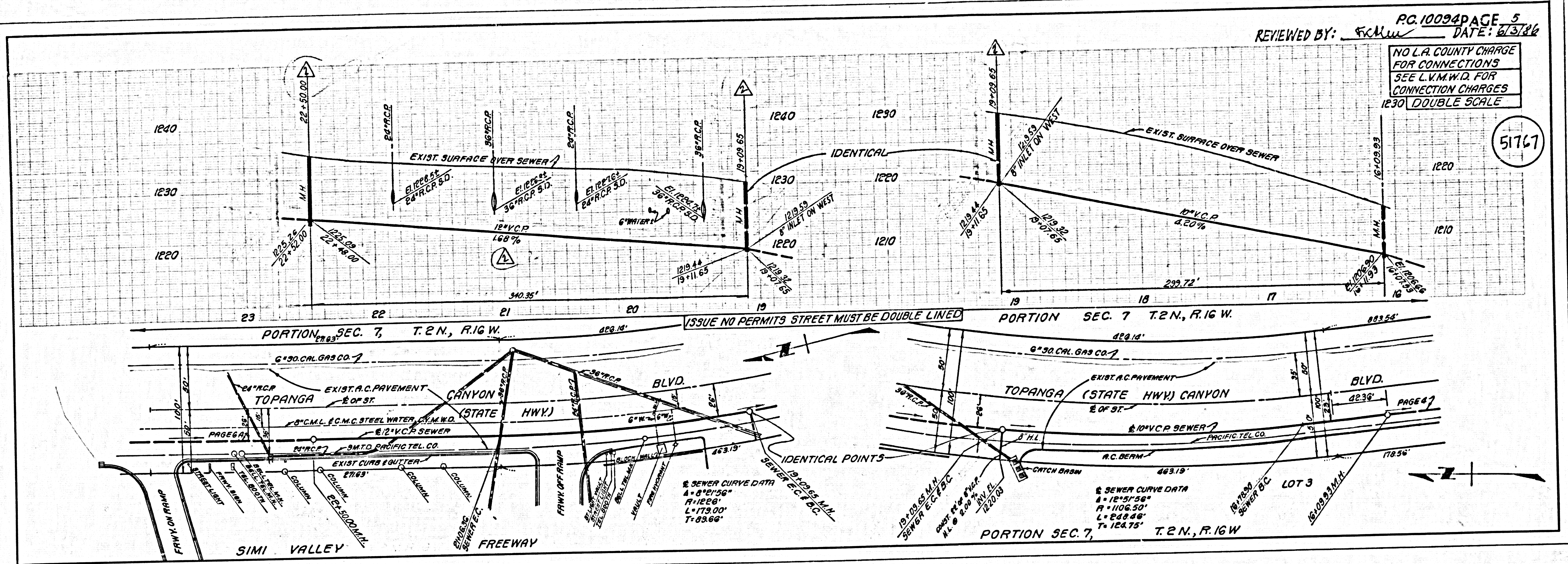
PC 1001 2A

PC 10094 PAGE 4
REVIEWED BY: *Scullin* DATE: 6/2/86

NO L.A. COUNTY CHARGE FOR CONNECTIONS
SEE L.V.M.W.D. FOR CONNECTION CHARGES
1170 DOUBLE SCALE

51766





NO.	REVISION	REVISION BY	APPROVED BY	DATE
1	REVISED			
2	REVISED			
3	REVISED			

16501 59

51767

51767