

SANITARY SEWERS

TO BE CONSTRUCTED IN
PARCEL MAP 14777

PRIVATE CONTRACT NO. 10100

C-A-59

W.S. 62

50189

5 SHEETS, 10 PAGES

SCALE: HORIZ. 1"=40' VERT. 1"=4'
JULY, 1982

PREPARED IN THE OFFICES OF
SHALLER & LOHR, INC.
1503 SOUTH COAST DR.
COSTA MESA, CALIF. 92626 (714) 754-5714

BY: *Paul J. Koonce*

REG. C.E. No. 20508

THE FOLLOWING LATEST REVISION STANDARDS PLANS ON FILE IN THE OFFICE OF THE COUNTY ENGINEER SHALL APPLY IN THE CONSTRUCTION OF THIS PROJECT:

1. L.S.D.S.	5.2
2. MINIMUM PUBLIC SAFETY REQUIREMENTS	5.2
3. BRICE MANHOLE	5.2
4. STAMMERS MANHOLE STOP	5.17
5. BIDDING FOR SEWER PIPE	5.17
6. SPECIAL SUPPORT AND PROTECTION	5.17
7. CHECKING AND ENCASUREMENT	5.23
8. WTS ON THE SUPPORT	5.23
9. ALLOWABLE TRENCH WIDTHS	5.23
10. SOCCING MANHOLE FRAME AND COVER	5.23
11. NON-SHOCKING PRECAST CONCRETE MANHOLE	5.23
12. SADDLES FOR HOUSE LATERALS	5.23
13. IN ADDITION THE FOLLOWING COUNTY SANITATION DISTRICT	5.23
14. STANDARDS SHALL APPLY TO THE CONSTRUCTION OF THIS	
15. PROJECT	
16. STANDARD METHODS FOR CONNECTION TO PIPES AND STRUCTURES 5-B-56	

COUNTY OF LOS ANGELES, CALIFORNIA

STEPHEN J. KOONCE, COUNTY ENGINEER

WALTER E. GARRISON, CHIEF ENGINEER

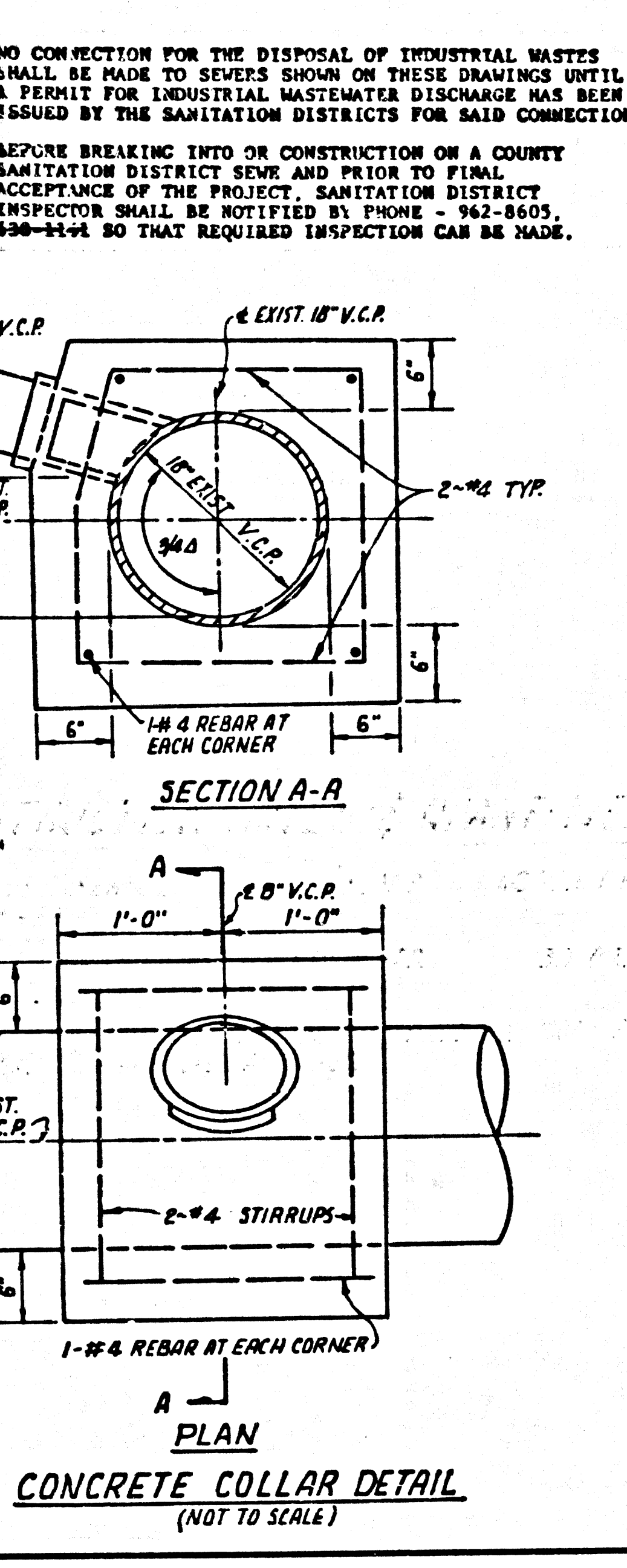
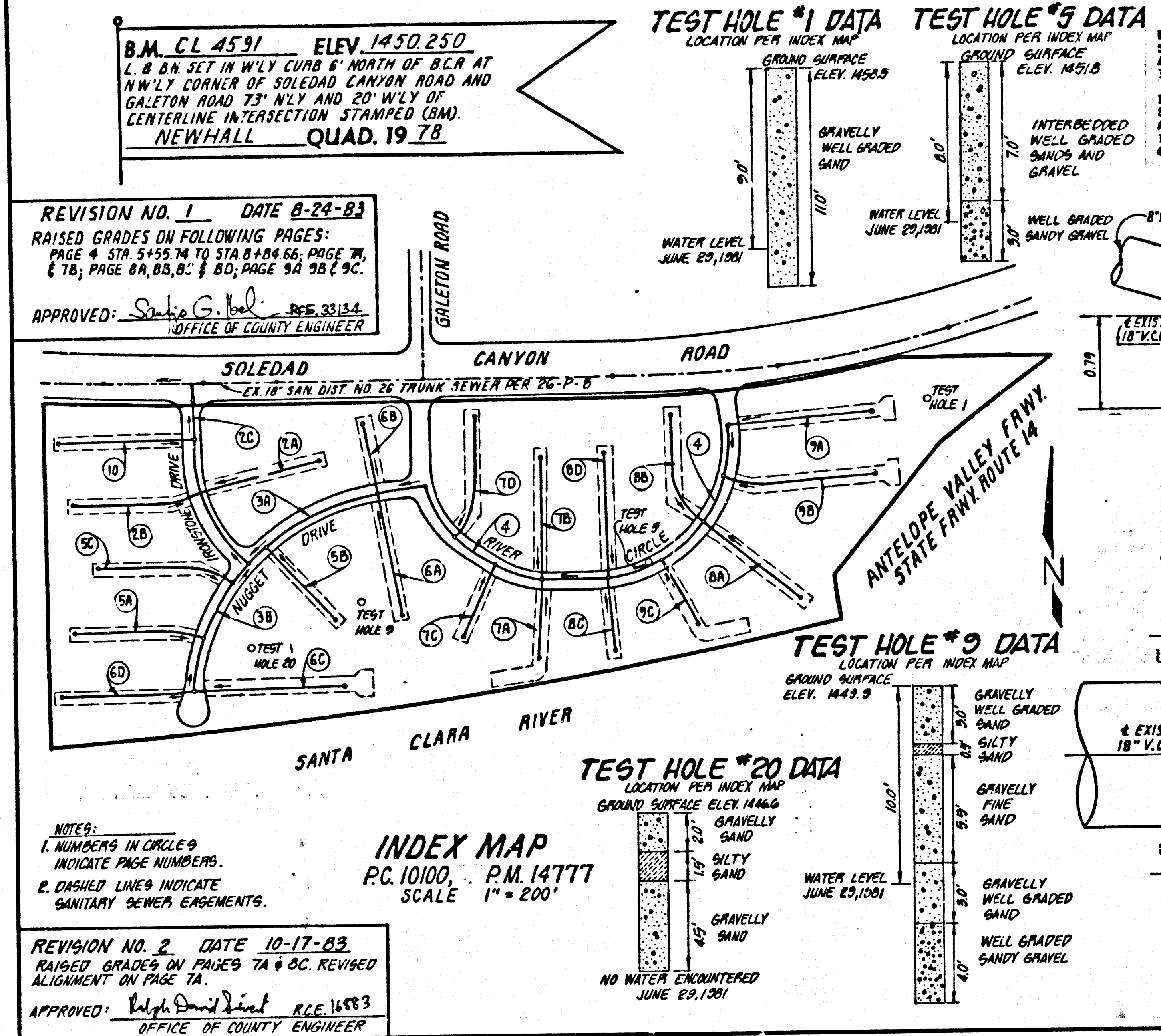
APPROVED: *Walter E. Garrison* DATE: 7/2/82

APPROVED: *Paul J. Koonce* DATE: 7/2/82

CHECKED: *Paul J. Koonce* DATE: 7/2/82

REG. C.E. No. 16787

SANTA CLARITA VALLEY BLDG. DIST. 92

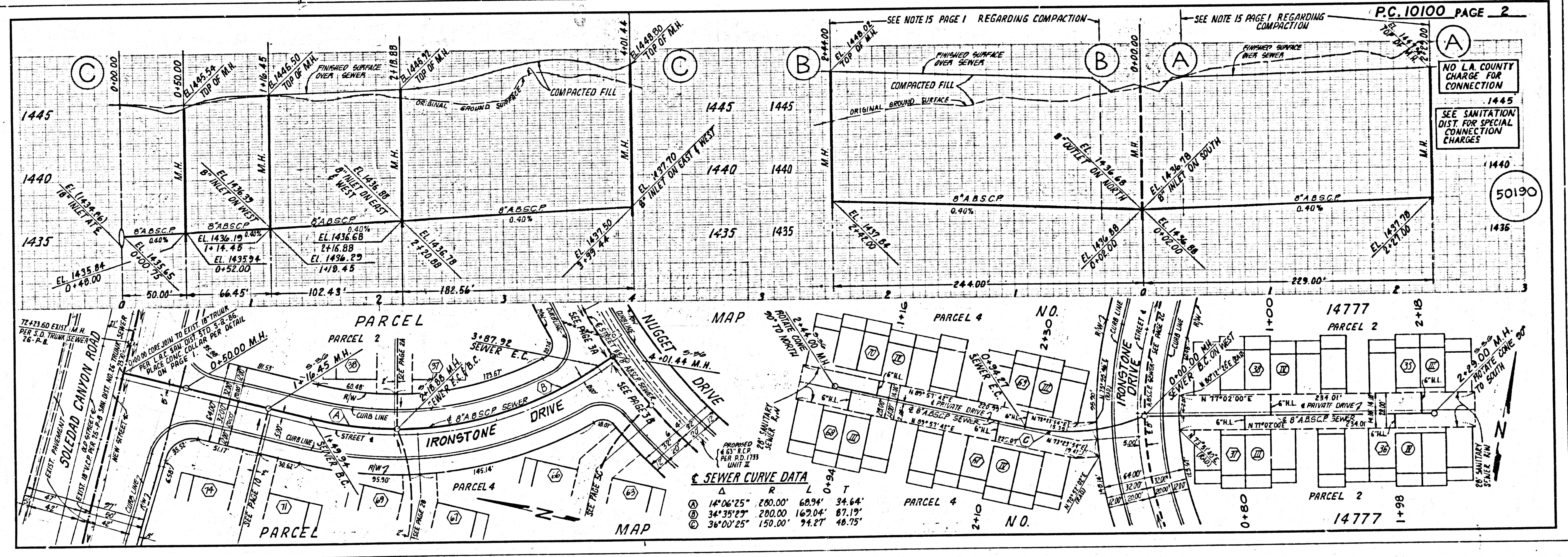


GENERAL NOTES:

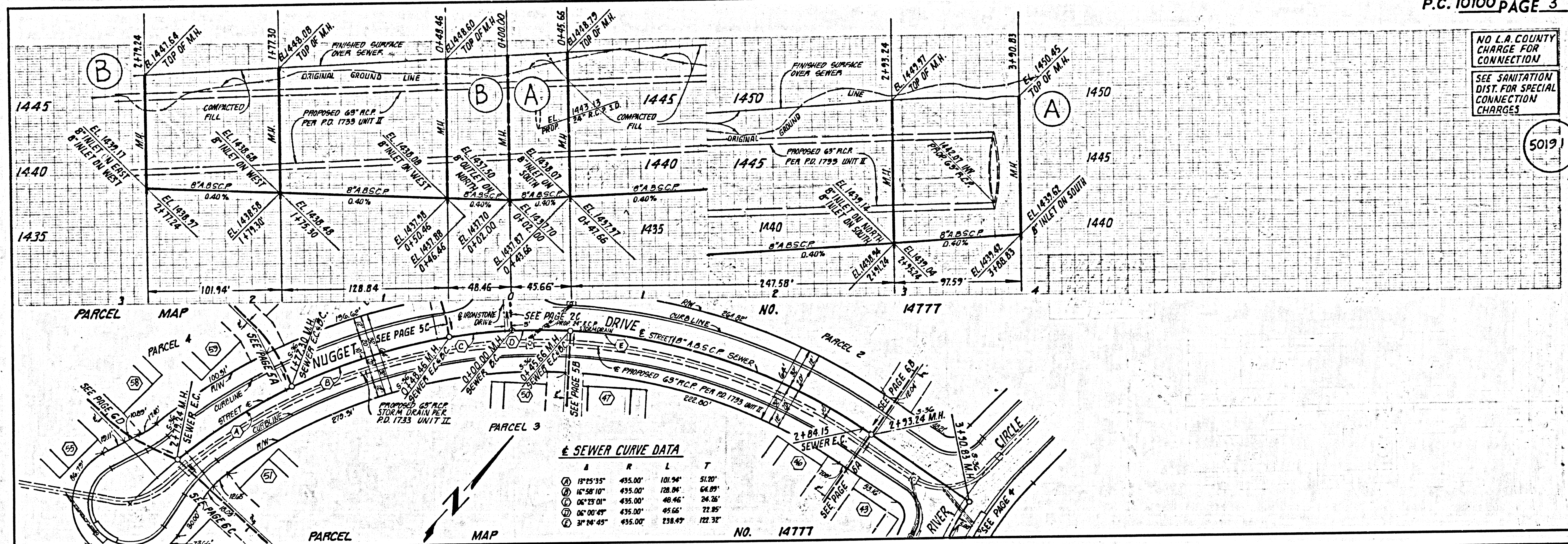
- ELEVATIONS ARE IN FEET ABOVE U.S.C. & G.S. SEA LEVEL DATUM OF 1988.
- NO REVISIONS SHALL BE MADE IN THESE PLANS WITHOUT THE APPROVAL OF THE COUNTY ENGINEER.
- NO REPRESENTATIVE OF THE COUNTY ENGINEER WILL SURVEY OR LAY OUT ANY PORTION OF THE WORK.
- GRADES TO WHICH THIS IMPROVEMENT IS TO BE CONSTRUCTED ARE SHOWN ON PLANS AND PROFILES. GRADE POINTS FOR TOP OF CURBS, CENTER LINE OF STREETS, OR CENTER LINE OF ALLEYS ARE SHOWN BY CIRCLES ON PROFILES. AT ALL POINTS BETWEEN DESIGNATED POINTS THE GRADE SHALL BE ESTABLISHED SO AS TO CONFORM TO A STRAIGHT LINE DRAWN BETWEEN SAID DESIGNATED POINTS.
- THE PRIVATE ENGINEER SHALL FURNISH THE COUNTY ENGINEER WITH GRADE SHEETS AND STATIONING FOR ALL HOUSE LATERALS AND 10" OR 12" BRANCHES AND SHALL PROVIDE STAKES FOR THEM AT THEIR PROPER LOCATIONS WITH STATIONING PLAINLY MARKED. ALL HOUSE LATERALS SHALL BE CONSTRUCTED IN A STRAIGHT ALIGNMENT AT RIGHT ANGLES FROM THE MAIN LINE SEWER EXCEPT AS SHOWN ON THE PLANS. HOUSE LATERALS FROM CHIMNEYS SHALL NOT HAVE AN ANGLE OF LESS THAN 45° WITH THE MAIN LINE SEWER, AND ANY CHANGE IN ALIGNMENT SHALL BE INDICATED IN WRITING BY THE PRIVATE ENGINEER.
- THE PRIVATE ENGINEER SHALL FURNISH THE HOUSE LATERAL DEPTH AT THE PROPERTY LINE BELOW THE TOP OF CURB ELEVATION FOR EACH HOUSE LATERAL ON THE GRADE SHEET.
- BEFORE WORK CAN BE STARTED, THE CONTRACTOR MUST OBTAIN A PERMIT TO EXCAVATE IN COUNTY STREETS FROM THE L.A. COUNTY ROAD DEPT., DISTRICT OFFICE NO. 1, AND PAY A FEE TO THE COUNTY ENGINEER, 880 S. VERNON AVENUE, LOS ANGELES, CA 90024, TO COVER THE COST OF CONSTRUCTION INSPECTION AND RECORD PLANS.
- IF WORK IS TO BE DONE IN A STATE HIGHWAY, A PERMIT MUST BE OBTAINED FROM THE STATE OF CALIFORNIA, DIVISION OF HIGHWAYS, 120 SOUTH SPRING STREET, LOS ANGELES, CALIFORNIA.
- APPROVAL OF THIS PLAN BY THE COUNTY OF LOS ANGELES DOES NOT CONSTITUTE A REPRESENTATION AS TO THE ACCURACY OF THE LOCATION OF OR THE EXISTENCE OR NON-EXISTENCE OF ANY UNDERGROUND UTILITY PIPE, OR STRUCTURE WITHIN THE LIMITS OF THIS PROJECT. THIS NOTE APPLIES TO ALL PAGES.
- REFER TO SECTION 7.04.1 OF THE STANDARD SPECIFICATIONS, REGARDING SAFETY ORDERS.
- PRIOR TO THE ISSUANCE OF THE REQUIRED SEWER CONSTRUCTION PERMIT, THE CONTRACTOR SHALL OBTAIN AND FILE WITH THE COUNTY ENGINEER COPIES OF A PERMIT TO EXCAVATE IN COUNTY STREETS FROM THE LOS ANGELES COUNTY ROAD DEPARTMENT, A PERMIT FOR EXCAVATIONS AND TRENCHES FROM THE STATE OF CALIFORNIA, DIVISION OF INDUSTRIAL SAFETY AND CERTIFICATION OF WORKERS COMPENSATION INSURANCE WITH THE DEPARTMENT OF COUNTY ENGINEER, 880 SOUTH VERNON, P.O. BOX 100, LOS ANGELES, CALIFORNIA 90024, NAMED AS THE CERTIFICATE HOLDER TO BE NOTIFIED 30 DAYS PRIOR TO CANCELLATION OF POLICY.

CONSTRUCTION NOTES:

- WORK SHALL BE CONSTRUCTED ACCORDING TO THE STANDARD SPECIFICATIONS FOR PUBLIC WORKS CONSTRUCTION (1982 EDITION) AND SHALL BE PROSECUTED ONLY IN THE PRESENCE OF THE COUNTY ENGINEER.
- THE CONTRACTOR SHALL NOTIFY THE ENVIRONMENTAL DEVELOPMENT DIVISION BY TELEPHONE, 726-2181, AT LEAST TWENTY-FOUR HOURS BEFORE STARTING ANY WORK UNDER THIS CONTRACT.
- HOUSE LATERALS TO BE CONSTRUCTED WITH 18" V.C.P. 1" OR 1 1/2" LINE & 2 FEET BELOW CURB GRADE EXCEPT AS NOTED.
- WIRE OR FIBER OPTIC CABLES SHALL BE USED FOR CONNECTIONS TO MAINLINE SEWERS EXCEPT AS NOTED.
- ALL STRUCTURES SHALL BE EITHER BRICK MANHOLES PER 8-03 OR PRECAST CONCRETE MANHOLES PER 8-03, EXCEPT AS NOTED.
- PROVIDE STAKES ON THE PROPERTY LINE OR PROPERTY LINES LOCATED AT RIGHT ANGLES TO THE SEWER LINE AT THE CENTER LINE OF EACH MANHOLE.
- MANHOLE TOPS IN UNIMPROVED RIGHTS OF WAY TO BE SIX INCHES ABOVE FINISHED GRADE.
- WETTED CLAY PIPE JOINTS SHALL BE TYPE "D" OR "E" PER STANDARD SPECIFICATIONS SECTION 208-2.
- IF A POWER POLE IS WITHIN THREE FEET OF THE SEWER, THE SEWER SHALL BE ENCASED, PER 8-03, CASE 4, TWO FEET ON EACH SIDE FROM THE POINT OF INTERFERENCE.
- IF DURING THE COURSE OF CONSTRUCTION IT IS DETERMINED THAT THERE IS LESS THAN FOUR FEET OF COVER OVER THE TOP OF A MAIN LINE OR HOUSE LATERAL SEWER WHICH IS NOT INDICATED ON THE PLANS, THE PIPE SHALL BE ENCASED PER 8-03, CASE 4 UNLESS OTHERWISE APPROVED BY THE COUNTY ENGINEER.
- ALL JOINTS BETWEEN CAST IRON PIPE AND WETTED CLAY PIPE SHALL BE MADE WITH A RUBBER SLEEVE JOINT, TYPE "C" OR "D", (WITH BUSHING IF NECESSARY) PER STANDARD SPECIFICATIONS, SECTION 208-3.
- SEWERS TO BE TESTED FOR LEAKAGE PER SECTION 208-1.1 OF THE STANDARD SPECIFICATIONS AND SPECIAL PROVISIONS.
- REWORK ALL TRENCHES WITHIN PAVED AREAS TO MEET L.A. COUNTY ROAD DEPT. OR CALIFORNIA STATE HIGHWAY REQUIREMENTS IN ACCORDANCE WITH PERMITS.
- FULL COMPLIANCE WITH SECTION 208-1.2 OF THE SPECIAL PROVISIONS WILL BE REQUIRED FOR BACKFILL IN STREETS. CERTIFICATION OF BACKFILL COMPACTION AND SAND EQUIVALENTS BY A QUALIFIED, REGISTERED TESTING LABORATORY SHALL BE PROVIDED BY THE PERMITTEE PRIOR TO THE ISSUANCE OF A CERTIFICATE OF PARTIAL ACCEPTANCE.
- SPECIAL BACKFILL IN EMBANKMENT CONSTRUCTION: (A) BACKFILL TRENCH AND REPLACE OTHER EARTH SO AS TO ACHIEVE THE NATURAL OR FINISHED GRADES AND SLOPES SHOWN ON THE GRADING PLAN APPROVED FOR THIS DEVELOPMENT BY THE BUILDING AND SAFETY DIVISION. (B) ALL BACKFILL AND EARTH REPLACED SHALL BE COMPACTED TO A MINIMUM OF 90% MAXIMUM DENSITY PER A.S.T.M. 97D METHOD OF TEST DIRECTLY AS SHOWN, ACCEPTABLE CERTIFICATION OF SUCH COMPACTION SHALL BE SUBMITTED TO THE ENVIRONMENTAL DEVELOPMENT DIVISION.



PC 10100 1 50189 175741.M.9

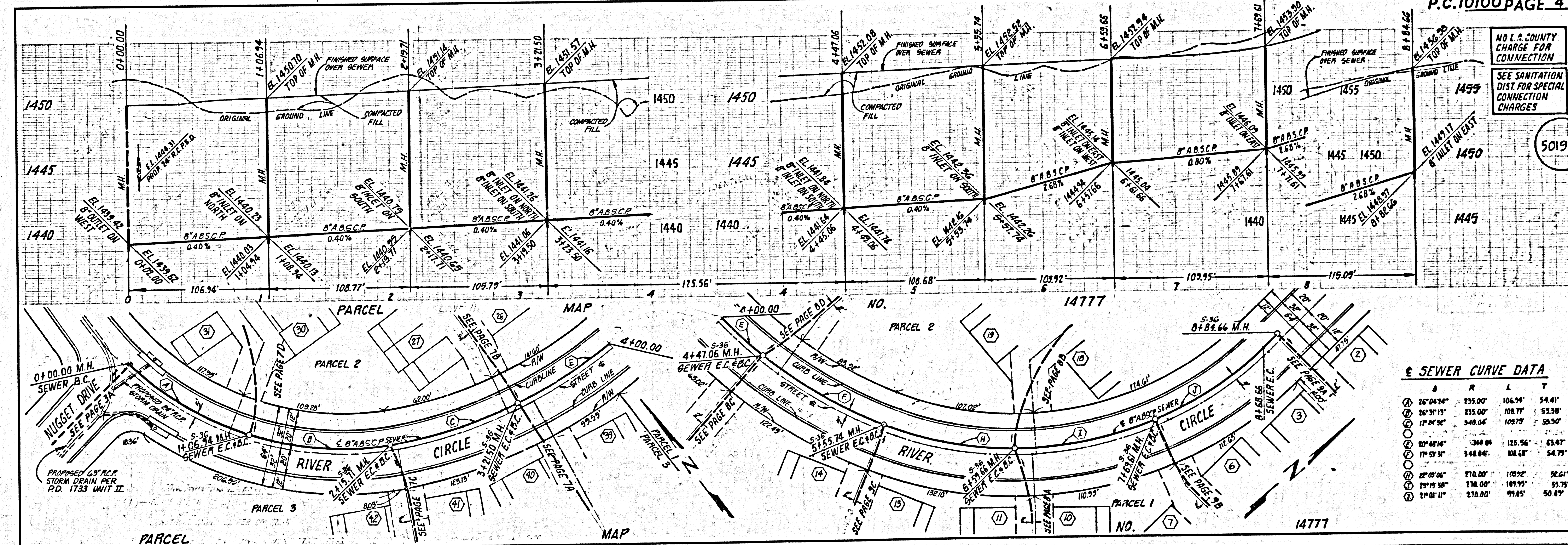


NO L.A. COUNTY CHARGE FOR CONNECTION
SEE SANITATION DIST. FOR SPECIAL CONNECTION CHARGES

5019

SEWER CURVE DATA

Station	A	R	L	T
15°25'35"	435.00'	101.94'	51.20'	
16°58'10"	435.00'	128.84'	64.09'	
06°23'01"	435.00'	48.46'	24.26'	
06°00'45"	435.00'	45.66'	22.85'	
3°16'45"	435.00'	238.47'	122.32'	



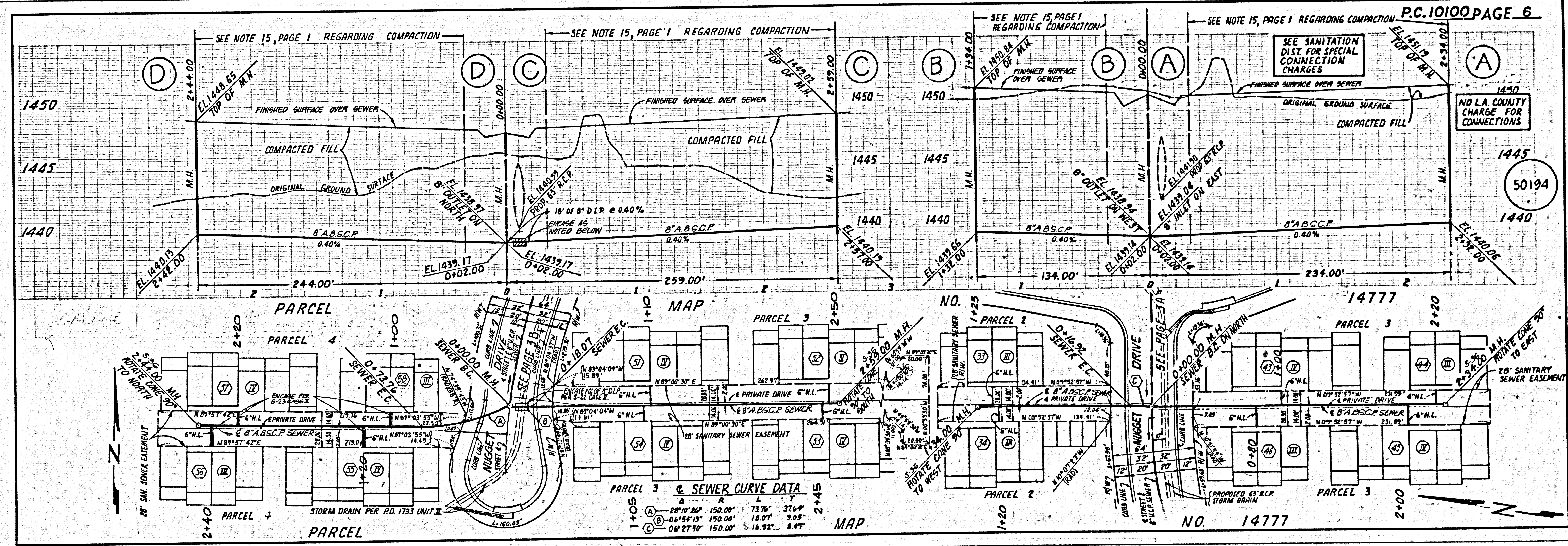
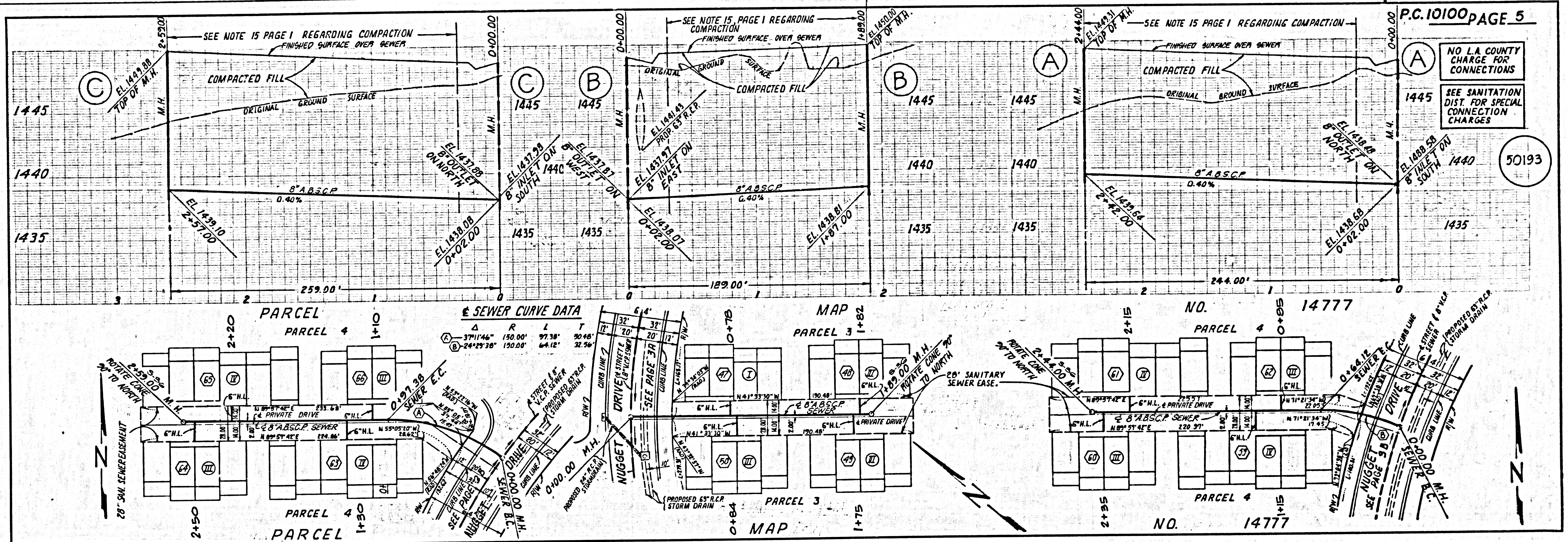
NO L.A. COUNTY CHARGE FOR CONNECTION
SEE SANITATION DIST. FOR SPECIAL CONNECTION CHARGES

50192

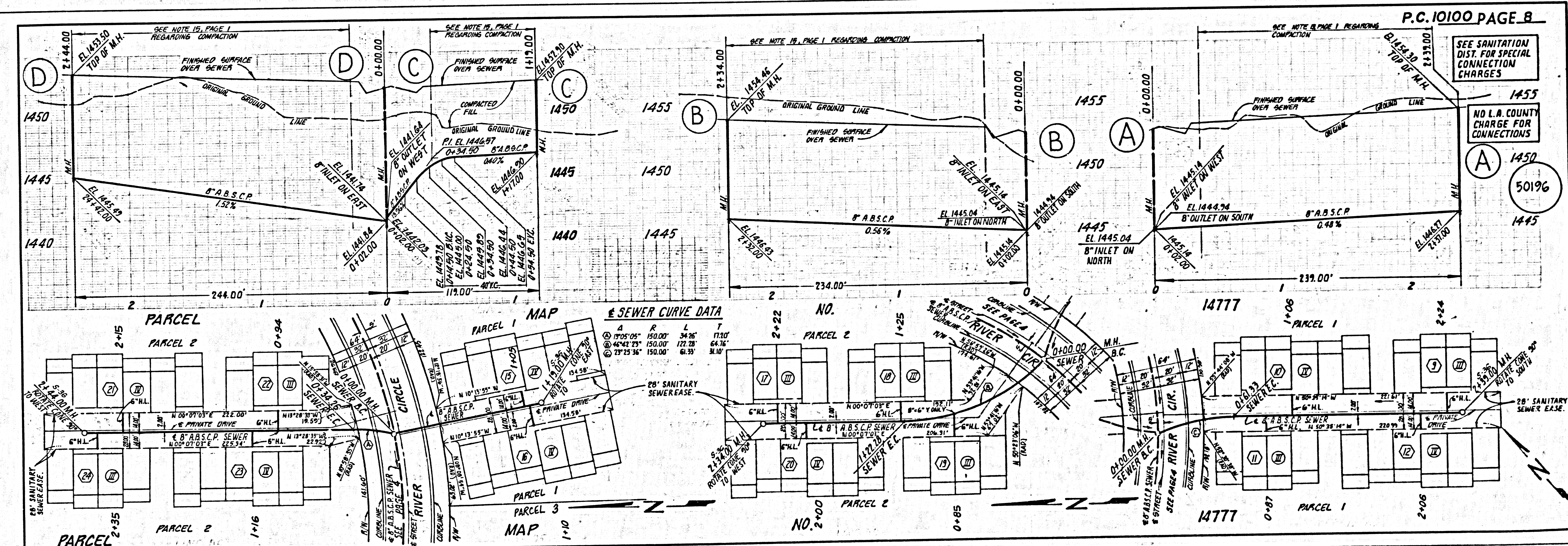
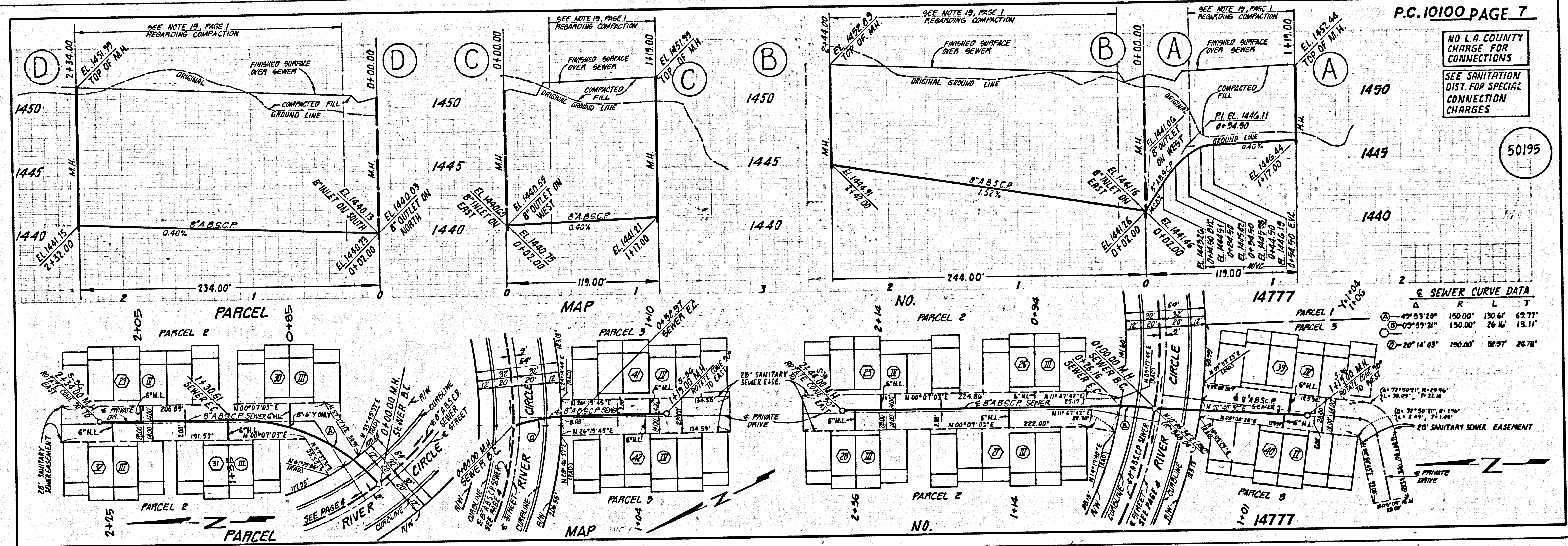
SEWER CURVE DATA

Station	A	R	L	T
26°04'34"	235.00'	106.94'	54.41'	
16°31'15"	235.00'	108.77'	53.38'	
17°24'56"	248.04'	109.79'	58.50'	
10°48'14"	348.04'	125.56'	63.41'	
17°53'31"	348.04'	108.68'	54.79'	
22°02'06"	270.00'	102.25'	52.61'	
22°19'28"	270.00'	101.93'	52.75'	
21°01'11"	270.00'	95.85'	50.81'	

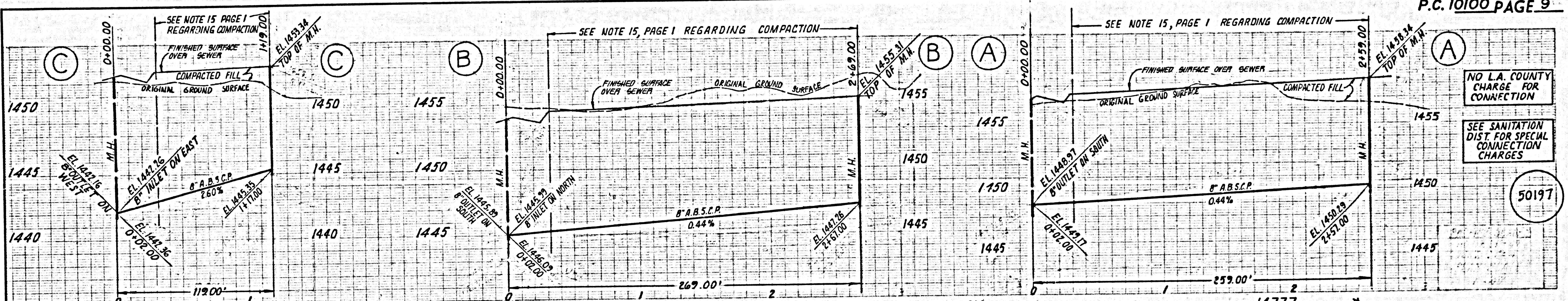
S 0010139 T5751.M.9



3
 001013P
 TTTA1.M.P



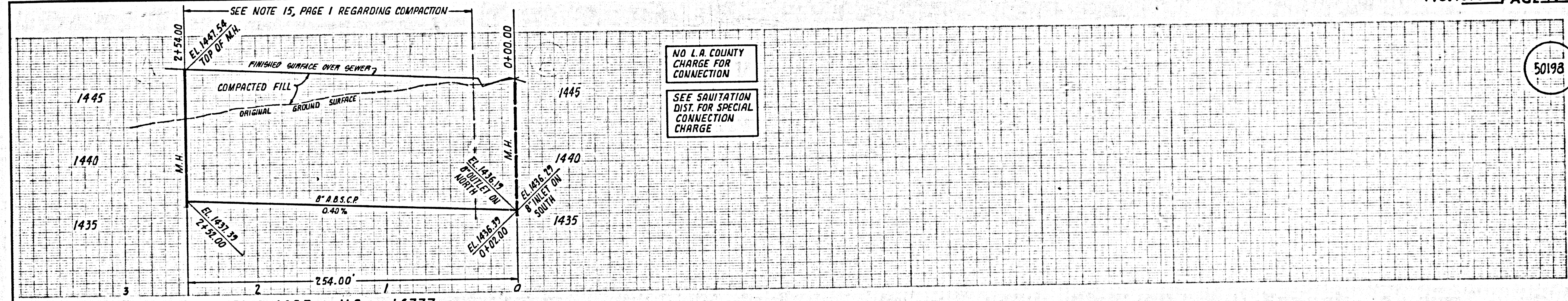
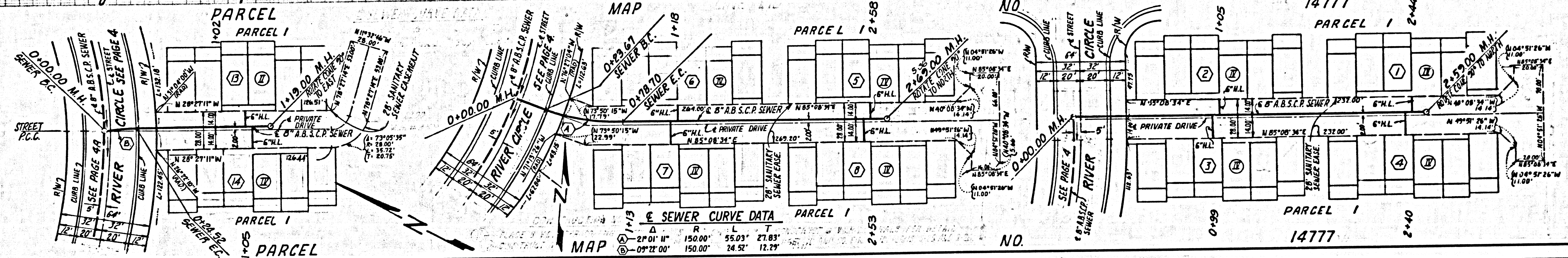
0010139
75741.M.9



NO L.A. COUNTY CHARGE FOR CONNECTION

SEE SANITATION DIST. FOR SPECIAL CONNECTION CHARGES

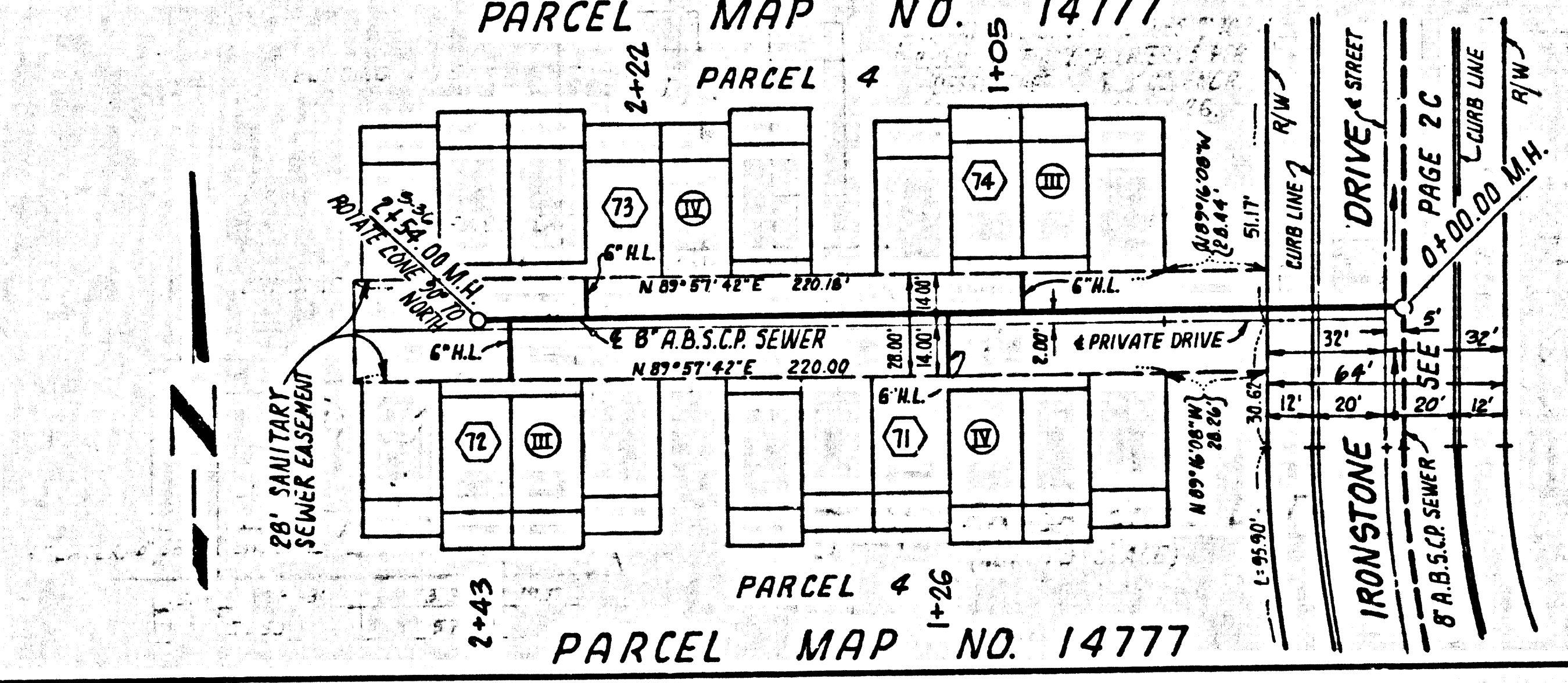
50197



NO L.A. COUNTY CHARGE FOR CONNECTION

SEE SANITATION DIST. FOR SPECIAL CONNECTION CHARGE

50198



2

0010109

STPA.M.9