

SANITARY SEWERS

TO BE CONSTRUCTED IN

TRACT NO 34367 (POR.)

PRIVATE CONTRACT NO. 10108

C-A-61

W.S. 62

5 SHEETS; 10 PAGES

50831

SCALE: VERT. 1" = 4' HORIZ. 1" = 40'

NOV 15, 1982

PREPARED IN THE OFFICES OF

ENGINEERING SERVICE CORPORATION

BY: *[Signature]*

REG. C. E. No. 13095

GENERAL NOTES:

- ELEVATIONS ARE IN FEET ABOVE U.S.C. & G.S. SEA LEVEL DATUM OF 1929.
- NO REVISIONS SHALL BE MADE IN THESE PLANS WITHOUT THE APPROVAL OF THE COUNTY ENGINEER.
- NO REPRESENTATIVE OF THE COUNTY ENGINEER WILL SURVEY OR LAY OUT ANY PORTION OF THE WORK.
- GRADES TO WHICH THIS IMPROVEMENT IS TO BE CONSTRUCTED ARE SHOWN ON PLANS AND PROFILES. GRADE POINTS FOR TOP OF CURBS, CENTER LINE OF STREETS, OR CENTER LINE OF ALLEYS ARE SHOWN BY CIRCLES ON PROFILES AT ALL POINTS BETWEEN DESIGNATED POINTS THE GRADE SHALL BE ESTABLISHED AS TO CONFORM TO A STRAIGHT LINE DRAWN BETWEEN SAID DESIGNATED POINTS.
- THE PRIVATE ENGINEER SHALL FURNISH THE COUNTY ENGINEER WITH GRADE SHEETS AND STATIONING FOR ALL HOUSE LATERALS AND "T" OR "Y" BRANCHES AND SHALL PROVIDE STAKES FOR THEIR PROPER LOCATION WITH STATIONING PLAINLY MARKED AND "D" OR "T" BRANCHES AND SHALL PROVIDE STAKES FOR THEIR PROPER LOCATION WITH STATIONING PLAINLY MARKED AS SHOWN ON THE PLANS. HOUSE LATERALS FROM CHIMNEYS SHALL NOT HAVE AN ANGLE OF LESS THAN 45° WITH THE MAIN LINE SEWER. ANY CHANGE IN ALIGNMENT SHALL BE REQUESTED IN WRITING BY THE PRIVATE ENGINEER.
- THE PRIVATE ENGINEER SHALL FURNISH THE COUNTY ENGINEER WITH THE 1. USE LATERAL DEPTH AT THE PROPERTY LINE BELOW THE TOP OF CURB ELEVATION FOR EACH HOUSE LATERAL ON THE GRADE SHEET.
- BEFORE WORK CAN BE STARTED, THE CONTRACTOR MUST OBTAIN A PERMIT TO EXCAVATE IN COUNTY STREETS FROM THE L.A. COUNTY ROAD DEPT., DISTRICT OFFICE NO. 5, 100 SOUTH WENTWORTH AVENUE, WENBROOK AVENUE, LOS ANGELES, CA 90001 TO COVER THE COST OF CONSTRUCTION INSPECTION AND RECORD PLANS.
- IF WORK IS TO BE DONE IN A STATE HIGHWAY, A PERMIT MUST BE OBTAINED FROM THE STATE OF CALIFORNIA, DIVISION OF HIGHWAYS, 120 SOUTH SPRING STREET, LOS ANGELES, CALIFORNIA.
- APPROVAL OF THIS PLAN BY THE COUNTY OF LOS ANGELES DOES NOT CONSTITUTE A REPRESENTATION AS TO THE ACCURACY OF THE LOCATION OF OR THE EXISTENCE OR NON-EXISTENCE OF ANY UNDERGROUND UTILITY PIPE, OR STRUCTURE WITHIN THE LIMITS OF THIS PROJECT. THIS NOTE APPLIES TO ALL PAGES.
- REFER TO SECTION 7.10.1.1 OF THE STANDARD SPECIFICATIONS, REGARDING SAFETY ORDERS.
- PRIOR TO THE ISSUANCE OF THE REQUIRED SEWER CONSTRUCTION PERMIT, THE CONTRACTOR SHALL OBTAIN AND FILE WITH THE COUNTY ENGINEER COPIES OF A PERMIT TO EXCAVATE IN COUNTY STREETS FROM THE LOS ANGELES COUNTY ROAD DEPARTMENT, A PERMIT FOR EXCAVATIONS AND TRENCHES FROM THE STATE OF CALIFORNIA, DIVISION OF INDUSTRIAL SAFETY AND A CERTIFICATE OF WORKERS COMPENSATION INSURANCE WITH THE DEPARTMENT OF COUNTY ENGINEER, 900 SOUTH WENTWORTH, RM. 406, LOS ANGELES, CALIFORNIA 90008, NAMED AS THE CERTIFICATE HOLDER TO BE NOTIFIED 30 DAYS PRIOR TO CANCELLATION OF POLICY.

CONSTRUCTION NOTES:

- WORK SHALL BE CONSTRUCTED ACCORDING TO THE STANDARD SPECIFICATIONS FOR PUBLIC WORKS CONSTRUCTION AND THE STANDARD SPECIFICATIONS FOR SANITARY SEWERS.
- THE CONTRACTOR SHALL NOTIFY THE PROJECT MANAGEMENT DIVISION BY TELEPHONE, 738-2188, AT LEAST TWENTY-FOUR HOURS BEFORE STARTING ANY WORK UNDER THIS CONTRACT.
- HOUSE LATERALS TO BE CONSTRUCTED WITH INVERTS AT PROPERTY LINE 8 FEET BELOW CURB GRADE EXCEPT AS NOTED.
- WYE OR TEE BRANCHES MAY BE USED FOR CONNECTIONS TO MAINLINE SEWERS EXCEPT AS NOTED.
- ALL STRUCTURES SHALL BE EITHER BRICK MANHOLES PER 8-3 OR PRECAST CONCRETE MANHOLES PER 8-3B, EXCEPT AS NOTED.
- PROVIDE STAKES ON THE PROPERTY LINE OR PROPERTY LINES PRODUCED AT RIGHT ANGLES TO THE SEWER LINE AT THE CENTER LINE OF EACH MANHOLE.
- MANHOLE TOPS IN UNIMPROVED RIGHTS OF WAY TO BE SIX INCHES ABOVE FINISHED GRADE.
- VITRIFIED CLAY PIPE JOINTS SHALL BE TYPE "D" OR "E" PER STANDARD SPECIFICATIONS SECTION 208-2.
- IF A POWER POLE IS WITHIN THREE FEET OF THE SEWER, THE SEWER SHALL BE ENCASED, PER 8-3B, CASE II, TWO FEET ON EACH SIDE FROM THE POINT OF INTERFERENCE.
- IF DURING THE COURSE OF CONSTRUCTION IT IS DETERMINED THAT THERE IS LESS THAN FOUR FEET OF COVER OVER THE TOP OF A MAIN LINE OR HOUSE LATERAL SEWER WHICH IS NOT INDICATED ON THE PLANS, THE PIPE SHALL BE ENCASED PER 8-3B, CASE II UNLESS OTHERWISE APPROVED BY THE COUNTY ENGINEER.
- ALL JOINTS BETWEEN CAST IRON PIPE AND VITRIFIED CLAY PIPE SHALL BE MADE WITH A RUBBER SLEEVE JOINT, TYPE "C" OR "D", (WITH RUBBER IF NECESSARY) PER STANDARD SPECIFICATIONS, SECTION 208-2.
- SEWERS TO BE TESTED FOR LEAKAGE PER SECTION 208-1.4 OF THE STANDARD SPECIFICATIONS AND SPECIAL PROVISIONS.
- RESURFACE ALL TRENCHES WITHIN PAVED AREAS TO MEET L.A. COUNTY ROAD DEPT. OR CALIFORNIA STATE HIGHWAY REQUIREMENTS IN ACCORDANCE WITH PERMITS.
- FULL COMPLIANCE WITH SECTION 801.1.5 OF THE SPECIAL PROVISIONS WILL BE REQUIRED FOR BACKFILL IN STREETS. CERTIFIED MATERIAL OR FINISHED GRADES AND SLOPES SHOWN ON THE DRAINING PLAN APPROVED FOR THIS DEVELOPMENT BY THE BUILDING AND SAFETY DIVISION. (B) ALL BACKFILL AND EARTH REPLACED SHALL BE COMPACTED TO A MINIMUM OF 90% PROCTOR DENSITY AND SAFETY DIVISION. (B) ALL BACKFILL AND EARTH REPLACED SHALL BE COMPACTED TO A MINIMUM OF 90% PROCTOR DENSITY PER A.S.T.M. 97D. METHOD OF TEST DENSITY IS MODIFIED. ACCEPTABLE CERTIFICATION OF SUCH DENSITY SHALL BE SUBMITTED TO THE PROJECT MANAGEMENT DIVISION.

THE FOLLOWING LATEST REVISED STANDARD PLANS ON FILE IN THE OFFICE OF THE COUNTY ENGINEER SHALL APPLY IN THE CONSTRUCTION OF THIS PROJECT:

LEGEND	8-3
MINIMUM PUBLIC SAFETY REQUIREMENTS	8-3
BRICK MANHOLE	8-3
STANDARD MANHOLE STOP	8-3
BEDDING FOR SEWER PIPE	8-3
CHANGING AND INCREASEMENT	8-3
WYE OR TEE SUPPORT	8-3
ALLOWABLE TRENCH WIDTHS	8-3
LOCKING MANHOLE FRAME AND COVER	8-3
NON-SHIMPORED PRECAST CONCRETE MANHOLE	8-3
CHIMNEY PIPE & PLUMB	8-3
BEDDING FOR A.B.S.C.P. SEWER PIPE	8-3

COUNTY OF LOS ANGELES, CALIFORNIA

STEPHEN J. KOONCE, COUNTY ENGINEER CHARLES W. CARRY, CHIEF ENGINEER

APPROVED: *[Signature]* DATE: 7-21-82 APPROVED: *[Signature]* DATE: 7/1/82

CHECKED: *[Signature]* DATE: 7-21-82

SHA. C.E. NO. 27067

Santa Clarita Valley BLDG. DIST. 82

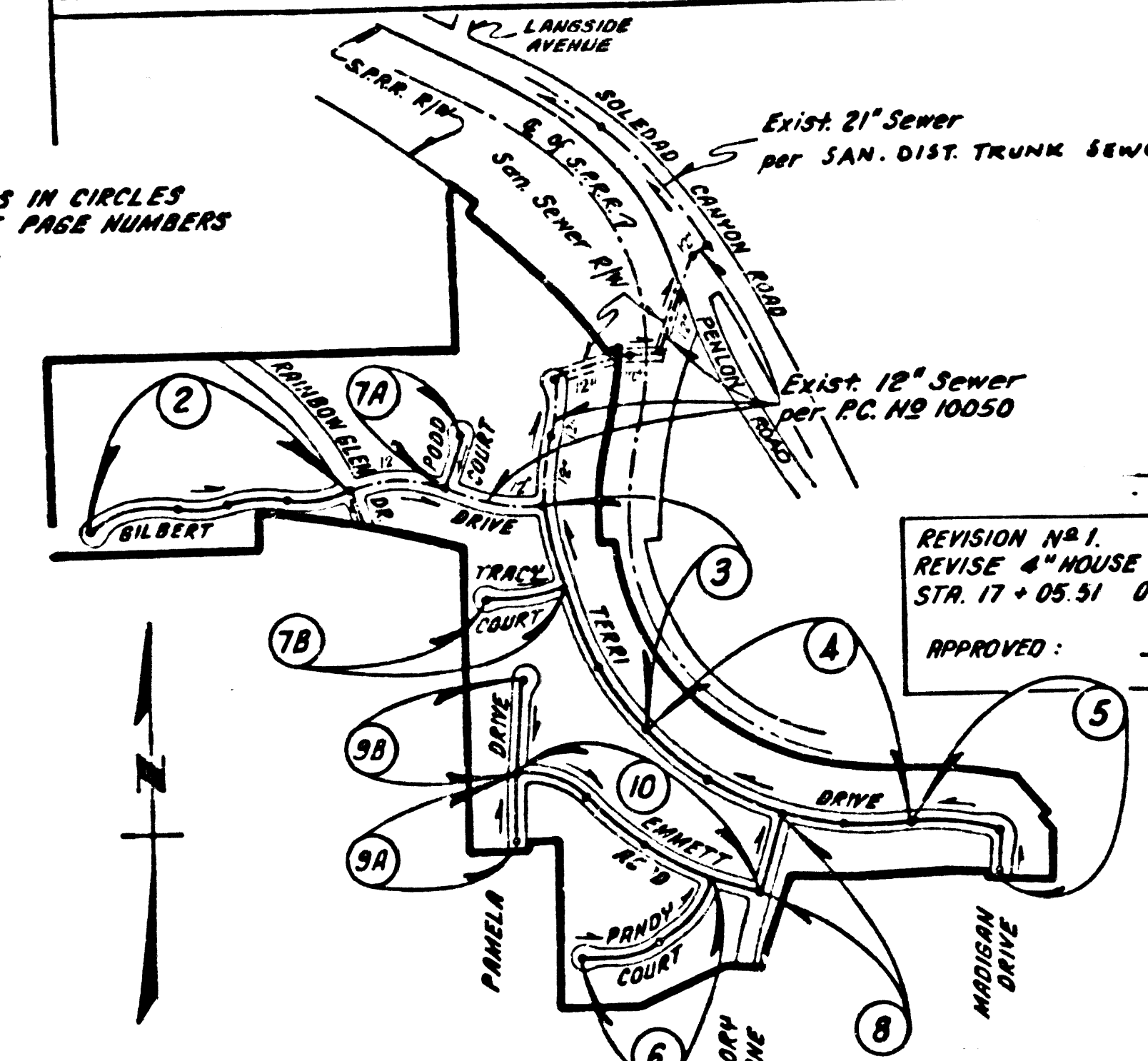
B.M. CL 4587 ELEV. 1327.698
 2.0 BM TAG IN CONC BASE TRAFFIC LIGHT
 ON NW COR SOLEDADO CANYON ROAD &
 LANESIDE AVENUE 43' N & 43' W G/L
 1/4" 13' E.L.M. 80'

Double Scale

CONSTRUCTION NOTES: (CONT.)

- WYE BRANCHES ONLY MAY BE USED FOR CONNECTIONS TO MAIN LINE SEWER IF A.B.S.C.P. IS USED.
- ALL JOINTS BETWEEN CAST IRON PIPE AND A.B.S.C.P. SHALL BE MADE WITH APPROVED FITTINGS.
- FULL COMPLIANCE WITH PART IX OF THE SPECIAL PROVISIONS IS REQUIRED FOR THE INSTALLATION OF A.B.S.C. COMPOSITE PIPE AND A.B.S.C. SOLID WALL HOUSE LATERALS.
- MANHOLE WATER STOP BRACKETS AND CLAMPS ARE REQUIRED FOR THE CONNECTION OF A.B.S.C. COMPOSITE PIPE TO MANHOLE STRUCTURES.
- A.B.S. SOLID WALL PIPE MUST BE USED FOR WYE AND HOUSE LATERAL CONNECTIONS TO A.B.S. COMPOSITE MAINLINE SEWER PIPE.
- 3 DEGREE DEFLECTION COUPLERS MUST BE USED TO ACCOMPLISH RADII OF CURVATURE LESS THAN 300'.
- A.B.S. COMPOSITE PIPE SHALL BE BEDDED IN COMPLIANCE WITH THE TABLE IN SECTION 8-3.I OF PART IX OF SPECIAL PROVISIONS.

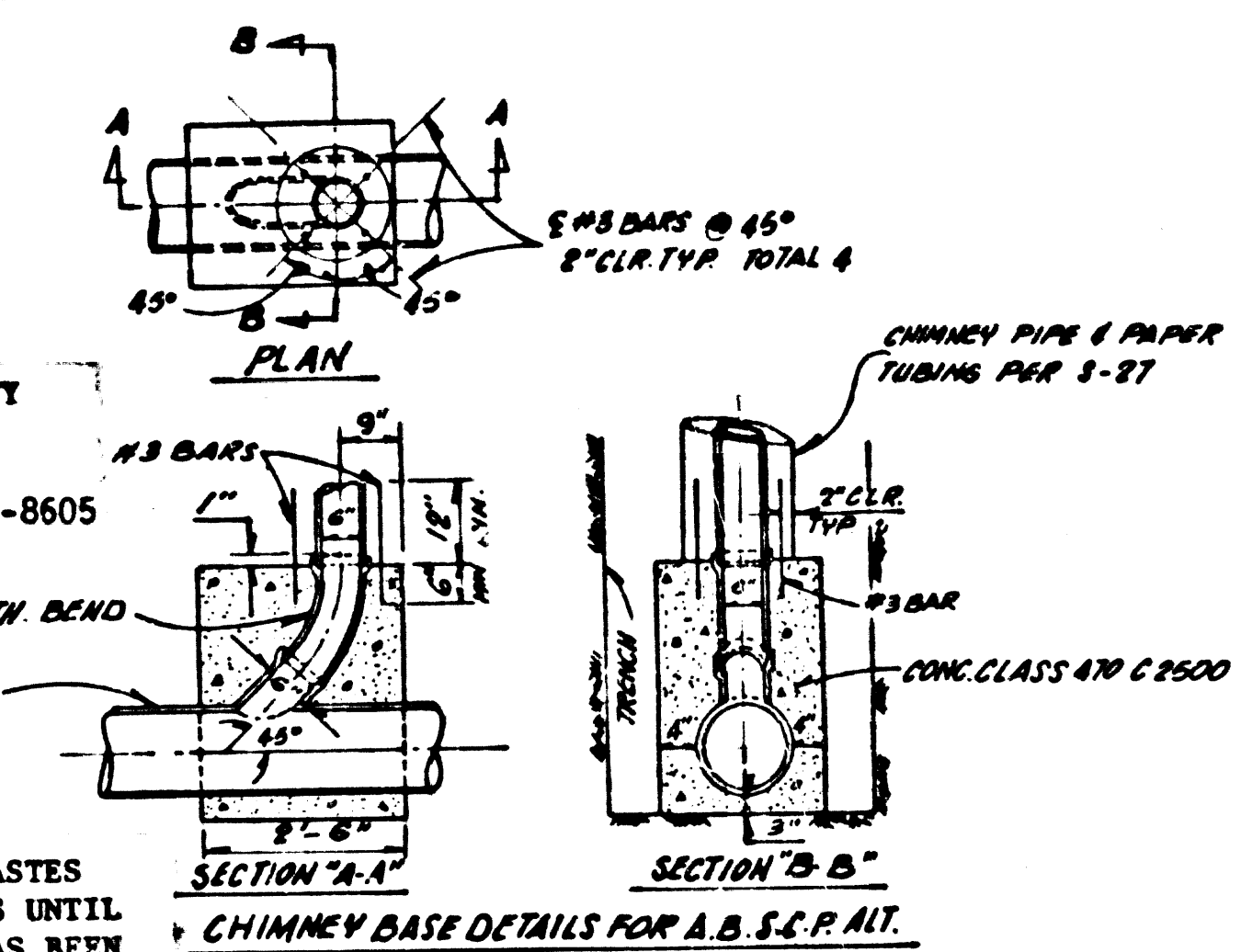
NOTE: NUMBERS IN CIRCLES INDICATE PAGE NUMBERS



INDEX MAP
 P.C. NO 10108
 SCALE: 1" = 600'
 TRACT NO 34367

REVISION NO. 1
 REVISE 4" HOUSE LATERALS FROM STA. 14+50.00 TO
 STA. 17+05.31 ON PAGE 4 N.W. SIDE
 DATE: 8-17-84
 APPROVED: *[Signature]*
 OFFICE OF COUNTY ENGINEER

ALLOW NO CONNECTIONS UNTIL PRIVATE CONTRACT 10050
 IS ACCEPTED FOR PUBLIC USE BY THE COUNTY OF
 LOS ANGELES.



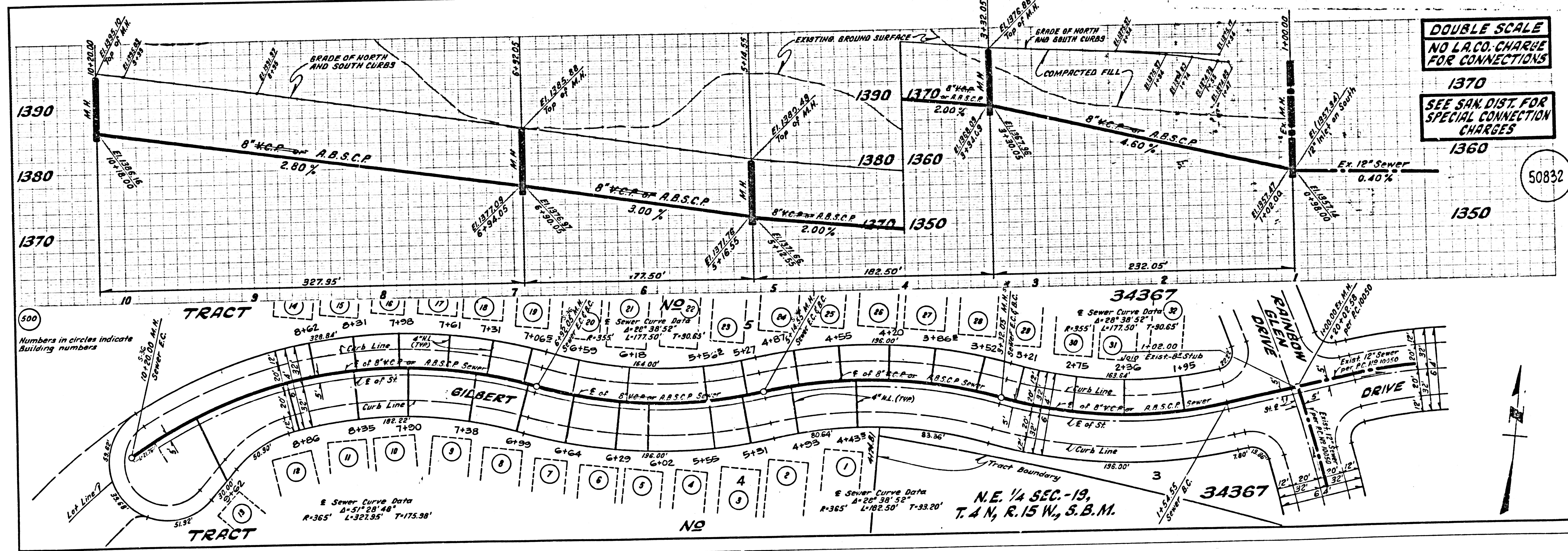
BEFORE BREAKING INTO OR CONSTRUCTION ON A COUNTY
 SANITATION DISTRICT SEWER AND PRIOR TO FINAL
 ACCEPTANCE OF THE PROJECT, SANITATION DISTRICT
 INSPECTOR SHALL BE NOTIFIED BY PHONE 818 - 962-8605
 SO THAT REQUIRED INSPECTION CAN BE MADE.

NO CONNECTION FOR THE DISPOSAL OF INDUSTRIAL WASTES
 SHALL BE MADE TO SEWERS SHOWN ON THESE DRAWINGS UNTIL
 A PERMIT FOR INDUSTRIAL WASTEWATER DISCHARGE HAS BEEN
 ISSUED BY THE SANITATION DISTRICTS FOR SAID CONNECTION.

DOUBLE SCALE NO L.A. CO. CHARGE FOR CONNECTIONS

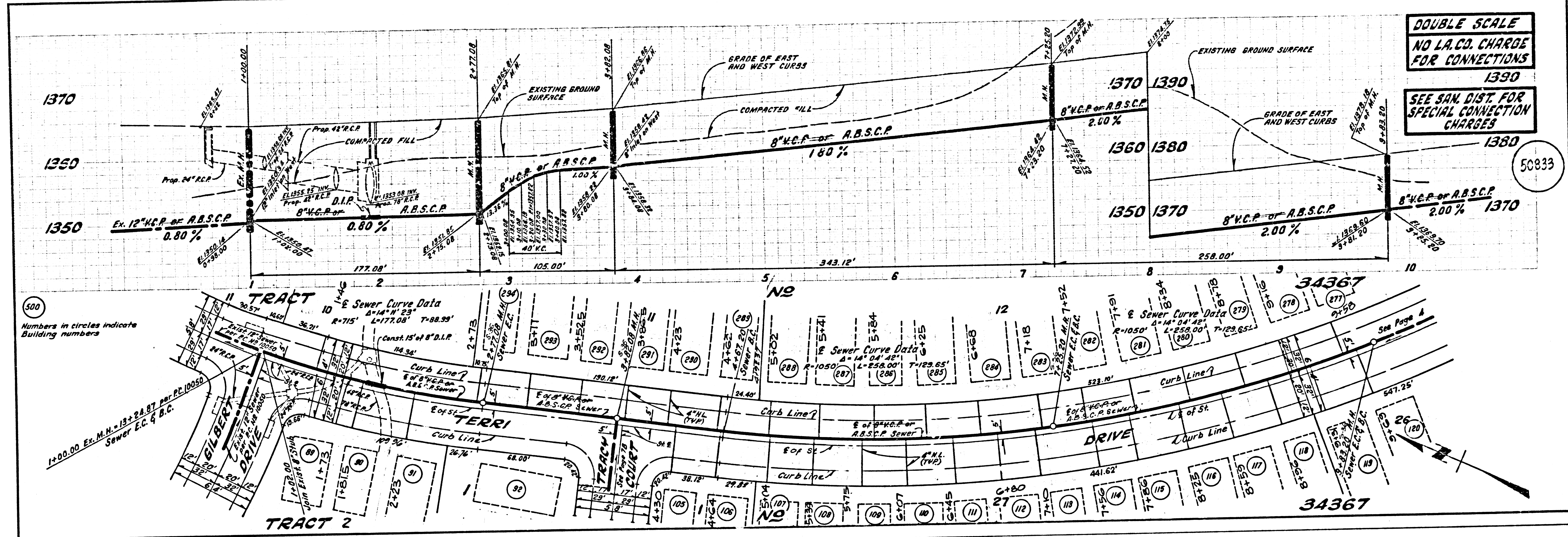
1370
 SEE SAN. DIST. FOR
 SPECIAL CONNECTION
 CHARGES

50832



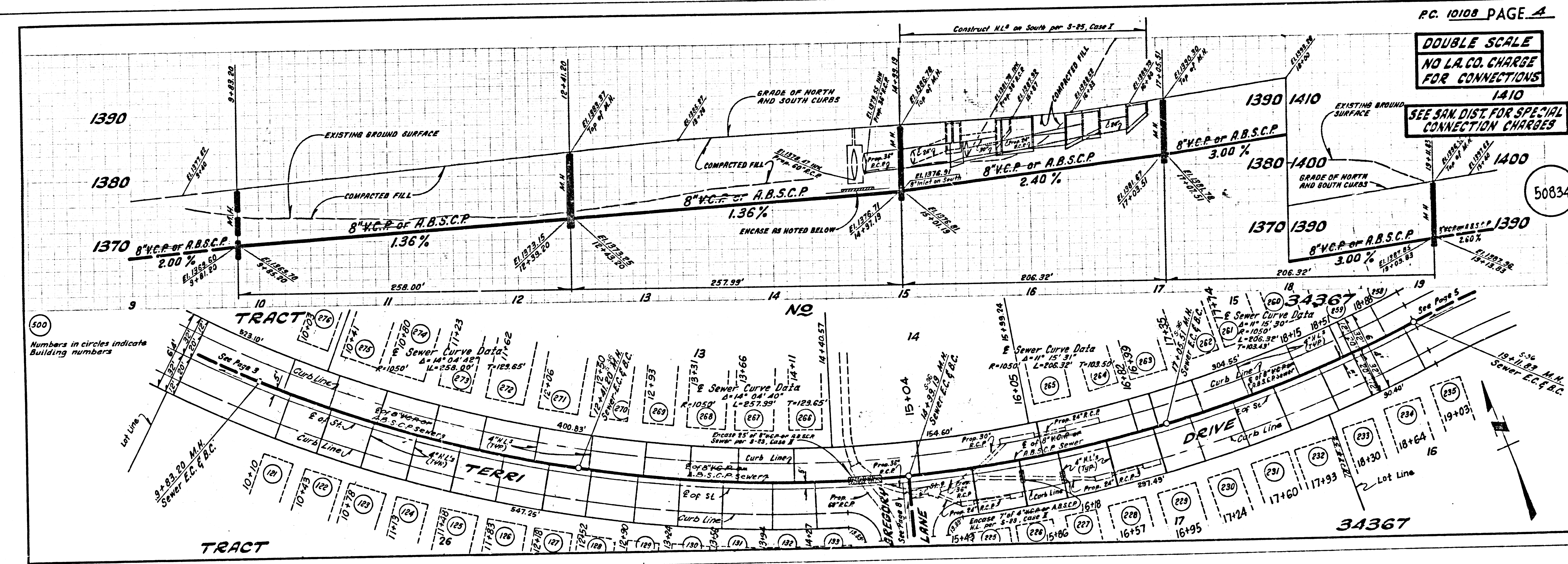
DOUBLE SCALE
NO L.A. CO. CHARGE
FOR CONNECTIONS

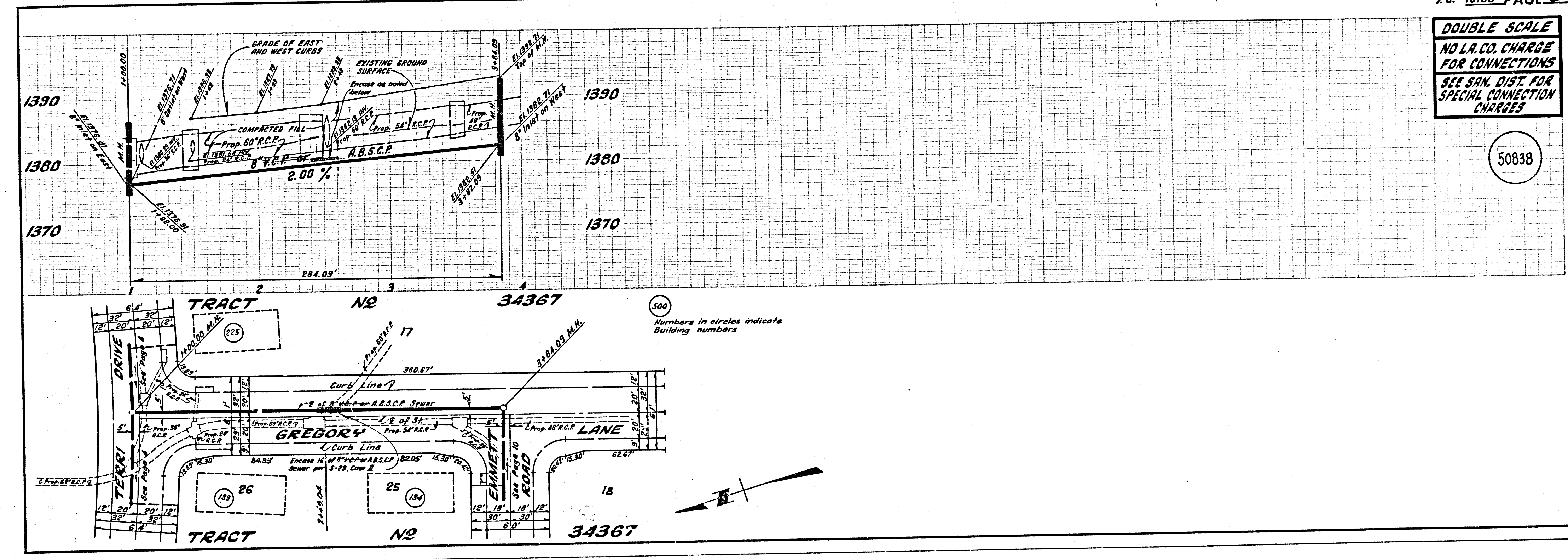
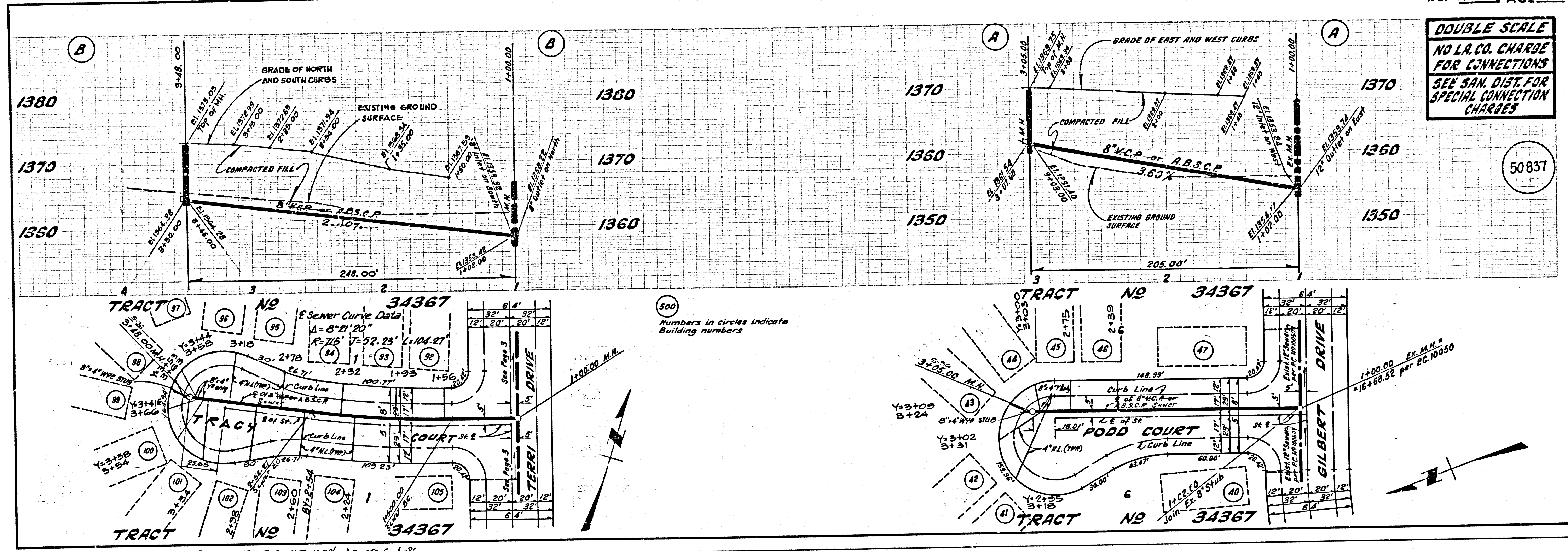
SEE SAN. DIST. FOR
SPECIAL CONNECTION
CHARGES



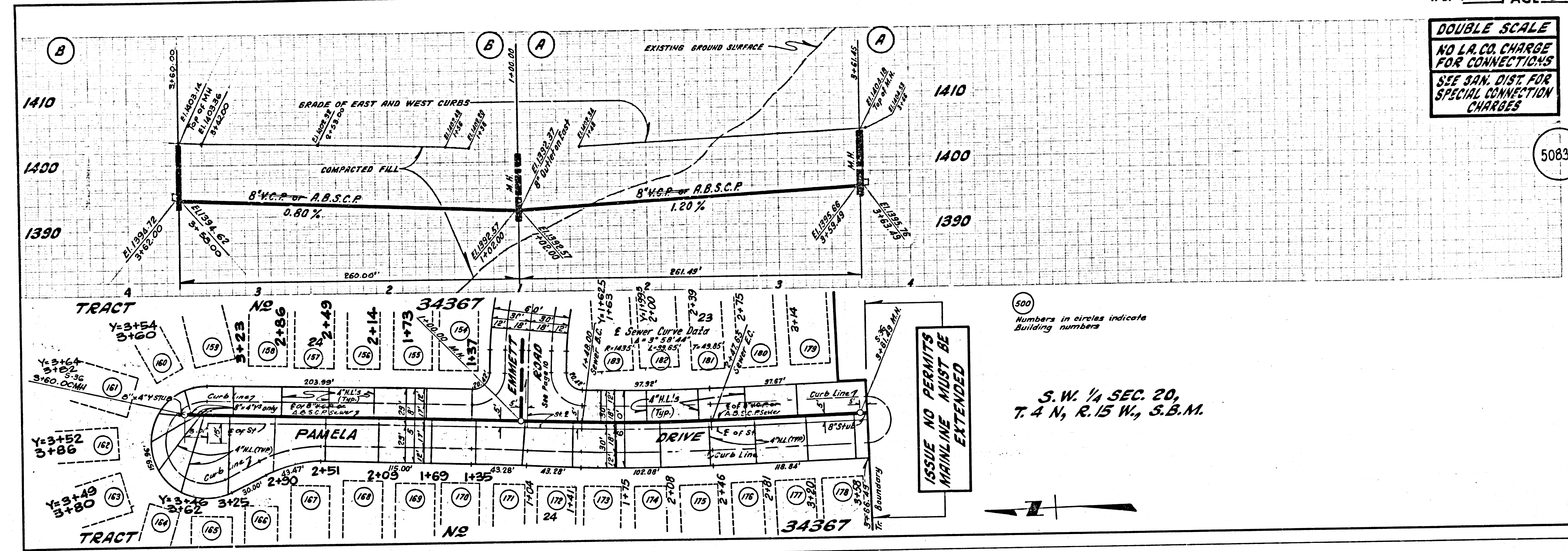
DOUBLE SCALE
NO L.A. CO. CHARGE
FOR CONNECTIONS

SEE SAN. DIST. FOR
SPECIAL CONNECTION
CHARGES





DOUBLE SCALE
NO L.A. CO. CHARGE
FOR CONNECTIONS
SEE SAN. DIST. FOR
SPECIAL CONNECTION
CHARGES



DOUBLE SCALE
NO L.A. CO. CHARGE
FOR CONNECTIONS
SEE SAN. DIST. FOR
SPECIAL CONNECTION
CHARGES

