

SANITARY SEWERS

TO BE CONSTRUCTED IN

TRACT NO 38519

PRIVATE CONTRACT NO. 10109

C-A-61

W.S. 62

5 SHEETS, 9 PAGES

51130

SCALE: VERT. 1"=4'
HORIZ. 1"=40'
NOV. 15, 1982
ENGINEERING SERVICE CORPORATION
5017 BAYVIEW DRIVE, LOS ANGELES, CALIF. 90044
REG. C.E. NO. 13032

THE FOLLOWING LATEST REVISED STANDARD PLANS ON FILE IN THE OFFICE OF THE COUNTY ENGINEER SHALL APPLY IN THE CONSTRUCTION OF THIS PROJECT.

LEGEND	5.1
MINIMUM PUBLIC SANITARY REQUIREMENTS	5.2
BRICK MANHOLE	5.3
STANDARD MANHOLE STEP	5.7
BEDDING FOR SEWER PIPE	5.8
CLADDING AND ENCASING	5.9
WYE ON SUPPORT	5.20
ALLOWABLE TRENCH WIDTHS	5.21
LOCKING MANHOLE FRAME AND COVER	5.22
NON-REINFORCED PRECAST CONCRETE MANHOLE	5.23

COUNTY OF LOS ANGELES, CALIFORNIA
STEPHEN J. KOONCE, COUNTY ENGINEER
APPROVED: [Signature] DATE: 11/22/82
CHECKED: [Signature] DATE: 11/22/82
REG. C.E. NO. 1084
Santa Clarita Valley BLDG. DIST. #2

GENERAL NOTES:

- ELEVATIONS ARE IN FEET ABOVE U.S.C. & G.S. SEA LEVEL DATUM OF 1929.
- NO REVISIONS SHALL BE MADE IN THESE PLANS WITHOUT THE APPROVAL OF THE COUNTY ENGINEER.
- NO REPRESENTATIVE OF THE COUNTY ENGINEER WILL SURVEY OR LAY OUT ANY PORTION OF THE WORK.
- GRADES TO WHICH THIS IMPROVEMENT IS TO BE CONSTRUCTED ARE SHOWN ON PLANS AND PROFILES. GRADE POINTS FOR TOP OF CURBS, CENTER LINE OF STREETS, OR CENTER LINE OF ALLEYS ARE SHOWN BY CIRCLES ON PROFILES. AT ALL POINTS BETWEEN DESIGNATED POINTS THE GRADE SHALL BE ESTABLISHED SO AS TO CONFORM TO A STRAIGHT LINE DRAWN BETWEEN SAID DESIGNATED POINTS.
- THE PRIVATE ENGINEER SHALL FURNISH THE COUNTY ENGINEER WITH GRADE SHEETS AND STATIONING FOR ALL HOUSE LATERALS AND "Y" OR "T" BRANCHES AND SHALL PROVIDE BAKES FOR THE SAME AT THEIR PROPER LOCATIONS WITH TYPING PLANT MARKED. ALL HOUSE LATERALS SHALL BE CONSTRUCTED IN A STRAIGHT ALIGNMENT AT RIGHT ANGLES FROM THE MAIN LINE SEWER EXCEPT AS SHOWN ON THE PLANS. HOUSE LATERALS FROM CHIMNEYS SHALL NOT HAVE AN ANGLE OF LESS THAN 45° WITH THE MAIN LINE SEWER. ANY CHANGE IN ALIGNMENT SHALL BE REQUESTED IN WRITING BY THE PRIVATE ENGINEER.
- THE PRIVATE ENGINEER SHALL FURNISH THE HOUSE LATERAL DEPTH AT THE PROPERTY LINE BELOW THE TOP OF CURB ELEVATION FOR EACH HOUSE LATERAL ON THE GRADE SHEET.
- BEFORE WORK CAN BE STARTED, THE CONTRACTOR MUST OBTAIN A PERMIT TO EXCAVATE IN COUNTY STREETS FROM THE L.A. COUNTY ROAD DEPT., DISTRICT OFFICE NO. 2, 800 SOUTH VERMONT, LOS ANGELES, CALIF. TO COVER THE COST OF CONSTRUCTION INSPECTION AND RECORD PLANS.
- IF WORK IS TO BE DONE IN A STATE HIGHWAY, A PERMIT MUST BE OBTAINED FROM THE STATE OF CALIFORNIA, DIVISION OF HIGHWAYS, 120 SOUTH SPRING STREET, LOS ANGELES, CALIFORNIA.
- APPROVAL OF THIS PLAN BY THE COUNTY OF LOS ANGELES DOES NOT CONSTITUTE A REPRESENTATION AS TO THE ACCURACY OF THE LOCATION OF OR THE EXISTENCE OR NON-EXISTENCE OF ANY UNDERGROUND UTILITY PIPE, OR STRUCTURE WITHIN THE LIMITS OF THIS PROJECT. THIS NOTE APPLIES TO ALL PAGES.
- REFER TO SECTION 7.10.4.1 OF THE STANDARD SPECIFICATIONS, REGARDING SAFETY ORDERS.
- PRIOR TO THE ISSUANCE OF THE REQUIRED SEWER CONSTRUCTION PERMIT, THE CONTRACTOR SHALL OBTAIN AND FILE WITH THE COUNTY ENGINEER COPIES OF A PERMIT TO EXCAVATE IN COUNTY STREETS FROM THE LOS ANGELES COUNTY ROAD DEPARTMENT, A PERMIT FOR EXCAVATIONS AND TRENCHES FROM THE STATE OF CALIFORNIA, DIVISION OF INDUSTRIAL SAFETY AND A CERTIFICATE OF WORKERS COMPENSATION INSURANCE WITH THE DEPARTMENT OF COUNTY ENGINEER, 800 SOUTH VERMONT, LOS ANGELES, CALIFORNIA. WORK NAMED AS THE CERTIFICATE HOLDER TO BE NOTIFIED 30 DAYS PRIOR TO CANCELLATION OF POLICY.

CONSTRUCTION NOTES:

- WORK SHALL BE CONSTRUCTED ACCORDING TO THE STANDARD SPECIFICATIONS FOR PUBLIC WORKS CONSTRUCTION (1982) EXCEPT WHERE SHOWN OTHERWISE. COUNTY ENGINEER SPECIAL PROVISIONS FOR SANITARY SEWERS SHALL BE PRESENTED ONLY IN THE PRESENCE OF THE COUNTY ENGINEER.
- THE CONTRACTOR SHALL NOTIFY THE PROJECT MANAGEMENT DIVISION BY TELEPHONE, 720-2108, AT LEAST TWENTY-FOUR HOURS BEFORE STARTING ANY WORK UNDER THE CONTRACT.
- HOUSE LATERALS TO BE CONSTRUCTED WITH INVERTS AT PROPERTY LINE 6 FEET BELOW CURB GRADE EXCEPT AS NOTED.
- WYE OR TEE BRANCHES MAY BE USED FOR CONNECTIONS TO EXISTING SEWERS EXCEPT AS NOTED.
- ALL STRUCTURES SHALL BE EITHER BRICK MANHOLES PER 5-3 OR PRECAST CONCRETE MANHOLES PER 5-3, EXCEPT AS NOTED.
- PROVIDE STAKES ON THE PROPERTY LINE OR PROPERTY LINES PRODUCED AT RIGHT ANGLES TO THE SEWER LINE AT THE CENTER LINE OF EACH MANHOLE.
- MANHOLE TOPS IN UNIMPROVED RIGHTS OF WAY TO BE SIX INCHES ABOVE FINISHED GRADE.
- WITHEDED CLAY PIPE JOINTS SHALL BE TYPE "D" OR "B" PER STANDARD SPECIFICATIONS SECTION 208-2.
- IF A POWER POLE IS WITHIN THREE FEET OF THE SEWER, THE SEWER SHALL BE ENCASED PER 5-3 CASE B TWO FEET ON EACH SIDE FROM THE POINT OF INTERFERENCE.
- IF DURING THE COURSE OF CONSTRUCTION IT IS DETERMINED THAT THERE IS LESS THAN FOUR FEET OF COVER OVER THE TOP OF A MAIN LINE OR HOUSE LATERAL EXCEPT AS NOTED, THE CONTRACTOR SHALL BE RESPONSIBLE FOR THE PROTECTION OF THE SEWER LINE PER 5-3, CASE B UNLESS OTHERWISE APPROVED BY THE COUNTY ENGINEER.
- ALL JOINTS BETWEEN CAST IRON PIPE AND WITHEDED CLAY PIPE SHALL BE MADE WITH A RUBBER SLEEVE JOINT, TYPE "C" OR "D", WITH GUSHING IF NECESSARY PER STANDARD SPECIFICATIONS, SECTION 208-2.
- SEWERS TO BE TESTED FOR LEAKAGE PER SECTION 208-1.0 OF THE STANDARD SPECIFICATIONS AND SPECIAL PROVISIONS.
- RESURFACE ALL TRENCHES WITHIN PAVED AREAS TO MEET L.A. COUNTY ROAD DEPT. OR CALIFORNIA STATE HIGHWAY REQUIREMENTS IN ACCORDANCE WITH PERMITS.
- FULL COMPLIANCE WITH SECTION 208-1.5 OF THE SPECIAL PROVISIONS WILL BE REQUIRED FOR BACKFILL IN STREETS. CERTIFIED BACKFILL COMPACTED AND SAND EQUIVALENTS BY A QUALIFIED, REGISTERED TESTING LABORATORY SHALL BE PROVIDED BY THE PERMITTEE PRIOR TO THE RESURFACING OF THE TRENCH APPROVED FOR THE DEVELOPMENT BY THE BUILDING AND SAFETY DIVISION. (B) ALL BACKFILL AND EARTH REPLACED SHALL BE COMPACTED TO A MINIMUM OF 90% OF MAXIMUM DENSITY PER A.S.T.M. METHOD OF TEST D1557 AS INCORPORATED. ACCEPTABLE CERTIFICATION OF SUCH COMPACTION SHALL BE SUBMITTED TO THE PROJECT MANAGEMENT DIVISION.

Double Scale

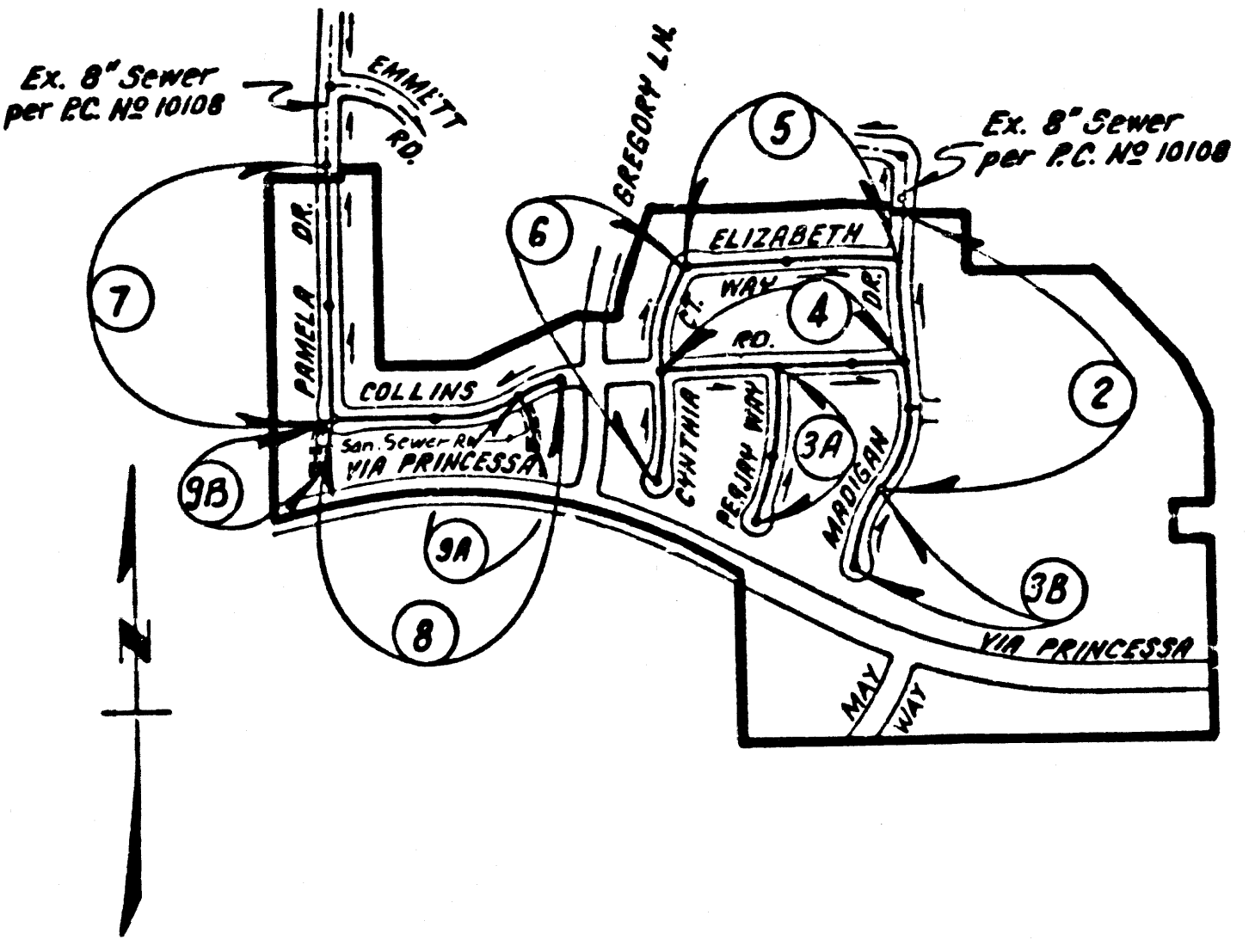
CONSTRUCTION NOTES: (CONT.)

- WYE BRANCHES ONLY MAY BE USED FOR CONNECTIONS TO MAIN LINE SEWER IF A.B.S.C.P. IS USED.
 - ALL JOINTS BETWEEN CAST IRON PIPE AND A.B.S.C.P. SHALL BE MADE WITH APPROVED FITTINGS.
 - FULL COMPLIANCE WITH PART II OF THE SPECIAL PROVISIONS IS REQUIRED FOR THE INSTALLATION OF A.B.S. COMPOSITE PIPE AND A.B.S. SOLID WALL HOUSE LATERALS.
 - MANHOLE WITHEDED STOP BRACKETS AND CLAMPS ARE REQUIRED FOR THE CONNECTION OF A.B.S. COMPOSITE PIPE TO MANHOLE STRUCTURES.
 - A.B.S. SOLID WALL PIPE MUST BE USED FOR WYE AND HOUSE LATERAL CONNECTIONS TO A.B.S. COMPOSITE MANHOLE SEWER PIPE.
 - 3 DEGREE DEFLECTION SADDLES MUST BE USED TO ACCOMPLISH RADII OF CURVATURE LESS THAN 360°.
 - A.B.S. COMPOSITE PIPE SHALL BE BEDDED IN CONFORMANCE WITH THE TABLE IN SECTION 5-3.1 OF PART II OF SPECIAL PROVISIONS.
- NO CONNECTION FOR THE DISPOSAL OF INDUSTRIAL WASTES SHALL BE MADE TO SEWERS SHOWN ON THESE DRAWINGS UNTIL A PERMIT FOR INDUSTRIAL WASTEWATER DISCHARGE HAS BEEN ISSUED BY THE SANITATION DISTRICTS FOR SAID CONNECTION.
- BEFORE BREAKING INTO OR CONSTRUCTION ON A COUNTY SANITATION DISTRICT SEWER AND PRIOR TO FINAL ACCEPTANCE OF THE PROJECT, SANITATION DISTRICT INSPECTOR SHALL BE NOTIFIED BY PHONE: 518 - 962-8605 SO THAT REQUIRED INSPECTION CAN BE MADE.

ALLOW NO CONNECTIONS UNTIL P.C. 10109 IS ACCEPTED FOR PUBLIC USE BY THE COUNTY OF LOS ANGELES

B.M. CL 4587 ELEV. 1327.698
RODM TAG IN CONC. BASE TRAFFIC LIGHT
ON NW COR SOLEDAD CANYON ROAD @
LANSDALE AVENUE 43FT N @ 45FT W CL
NOT SET FOR ELY BCR
NEWHALL QUAD. 1978

NOTE: SANITARY SEWERS ON PAGES 52-59 ARE IN SANITARY SEWER RIGHT-OF-WAY.

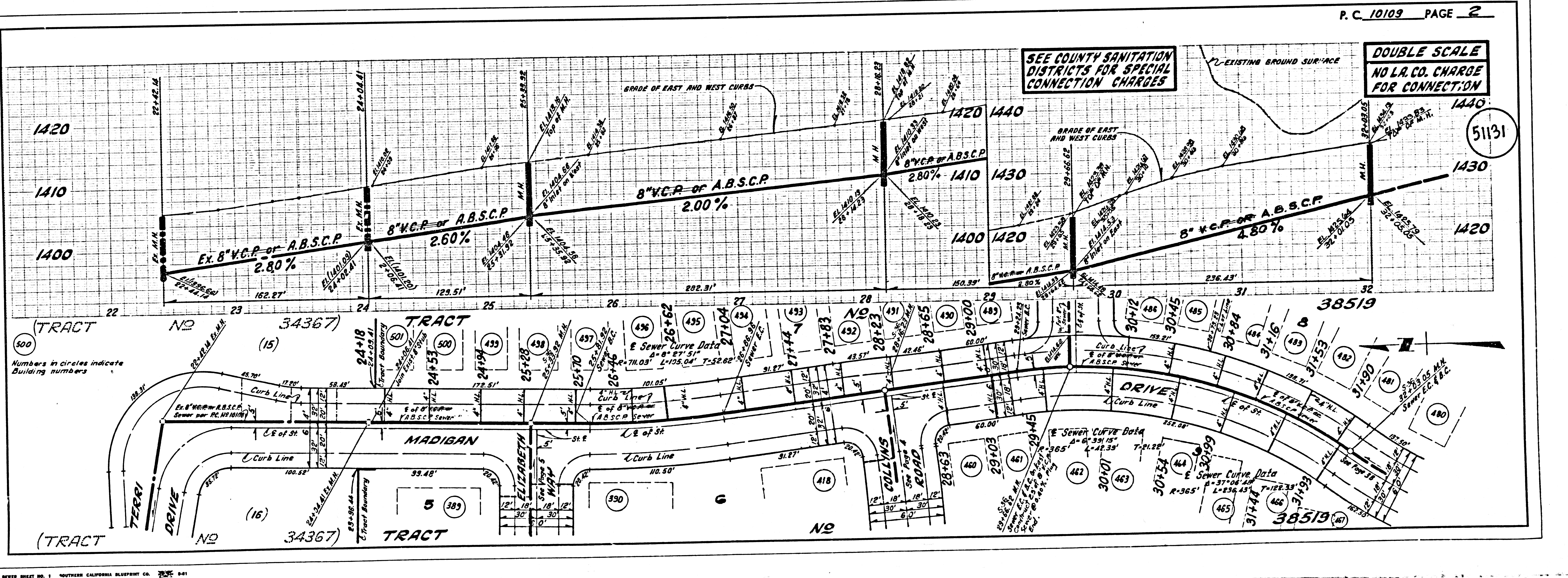


INDEX MAP
P.C. NO 10109
Scale: 1"=600'
TRACT NO 38519

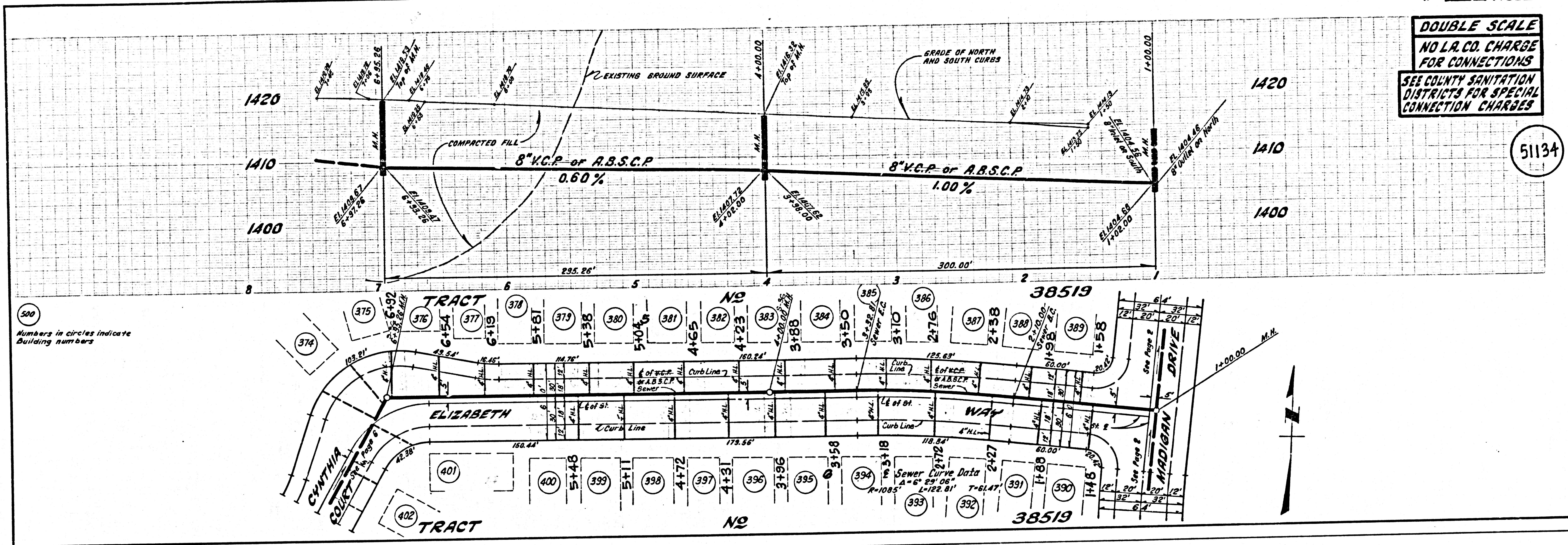
REVISION NO. 1 DATE 6-12-85
REVISED HOUSE LATERALS ON ALL PAGES
APPROVED: [Signature] R.C.E. 33134
OFFICE OF DEPT. OF PUBLIC WORKS

REVISION NO. 2 DATE 7-29-81
MOVED M.S. FROM 31+42.61 TO 31+42.71
ADDED 15' STAKE TO THE SAME M.S. ON PAGE 2
APPROVED: [Signature] R.C.E. 33134
OFFICE OF DEPT. OF PUBLIC WORKS

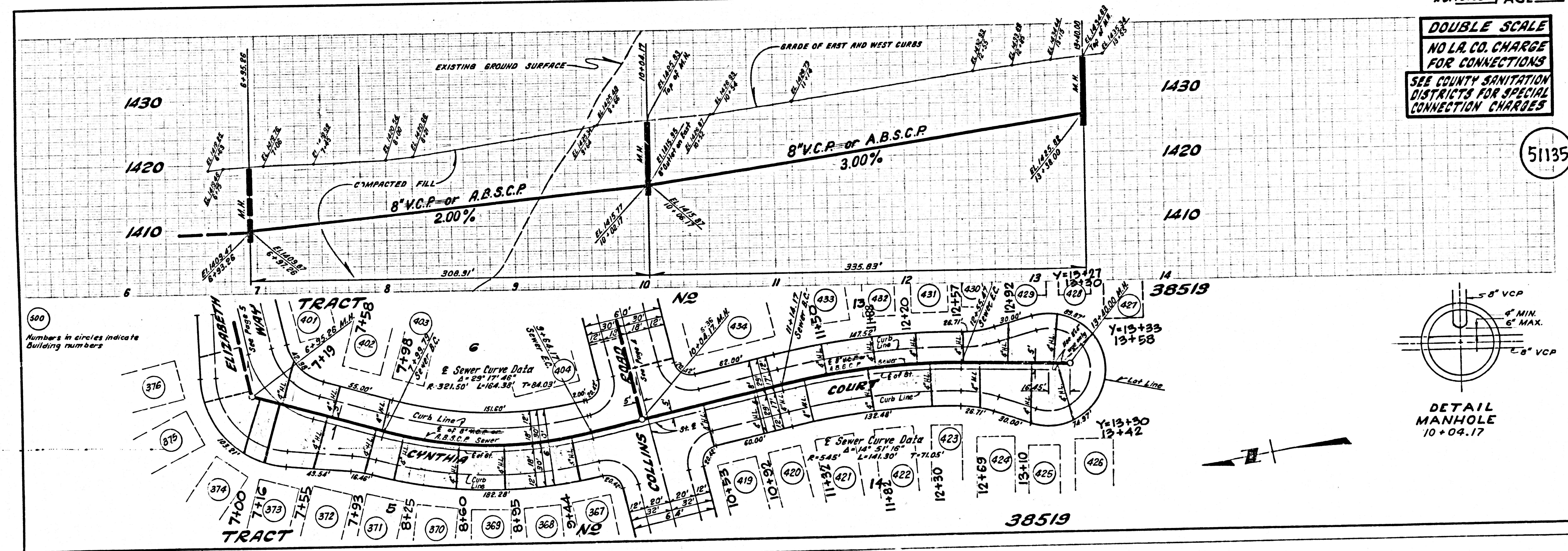
REVISION NO. 3 DATE 11-22-82
REVISED GRADE ON MADIGAN DRIVE ON PAGE 2 @ 3 AND PENALTY WAY ON PAGE 3.
APPROVED: [Signature] R.C.E. 33134
OFFICE OF DEPT. OF PUBLIC WORKS

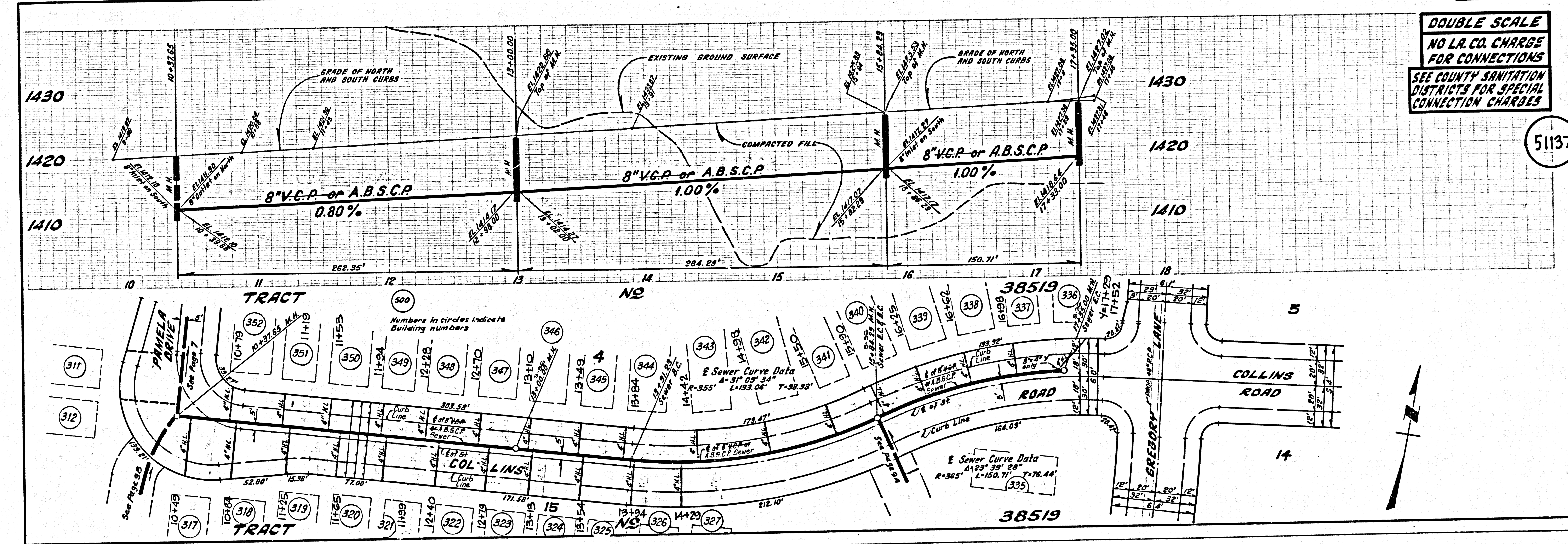
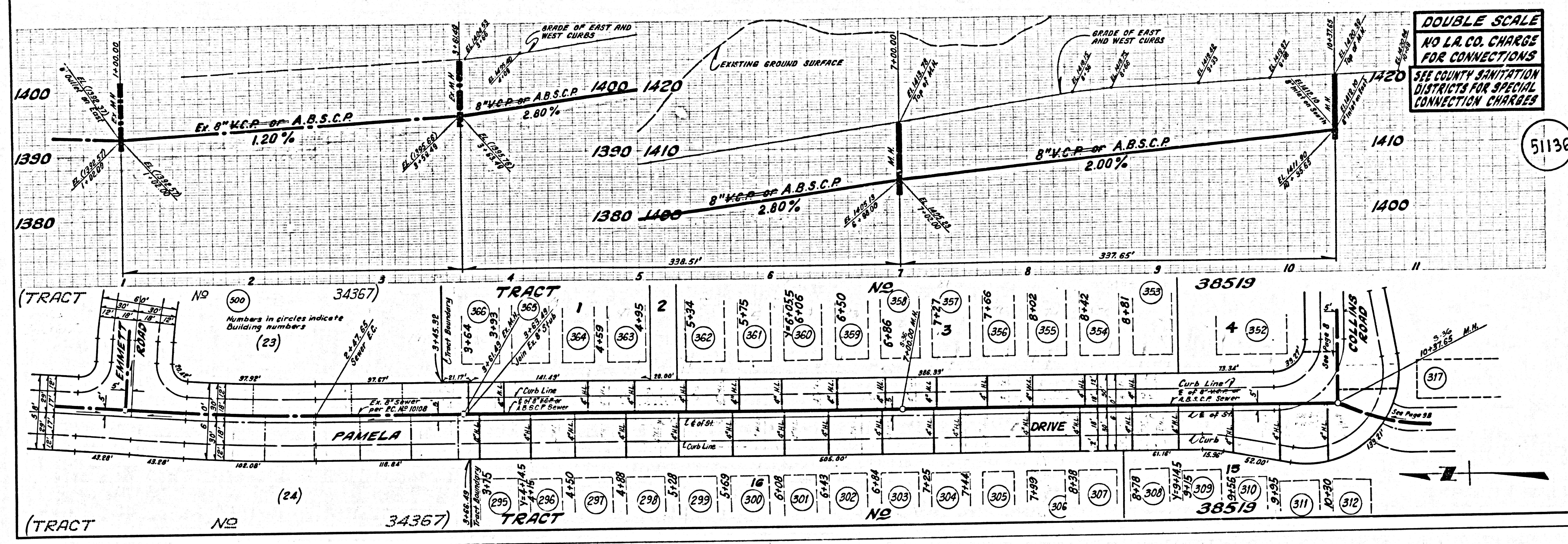


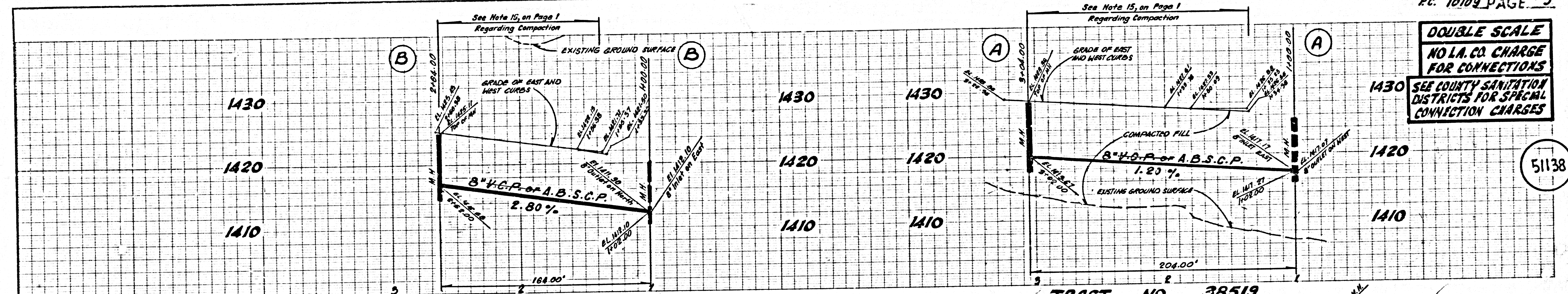
DOUBLE SCALE
NO L.A. CO. CHARGE
FOR CONNECTIONS
SEE COUNTY SANITATION
DISTRICTS FOR SPECIAL
CONNECTION CHARGES



DOUBLE SCALE
NO L.A. CO. CHARGE
FOR CONNECTIONS
SEE COUNTY SANITATION
DISTRICTS FOR SPECIAL
CONNECTION CHARGES





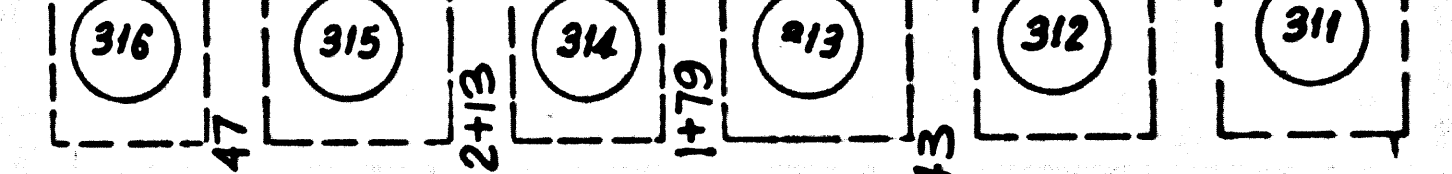


DOUBLE SCALE
NO I.A. CO. CHARGE
FOR CONNECTIONS
SEE COUNTY SANITATION
DISTRICTS FOR SPECIAL
CONNECTION CHARGES

51138

500
 Numbers in circles indicate
 Building numbers

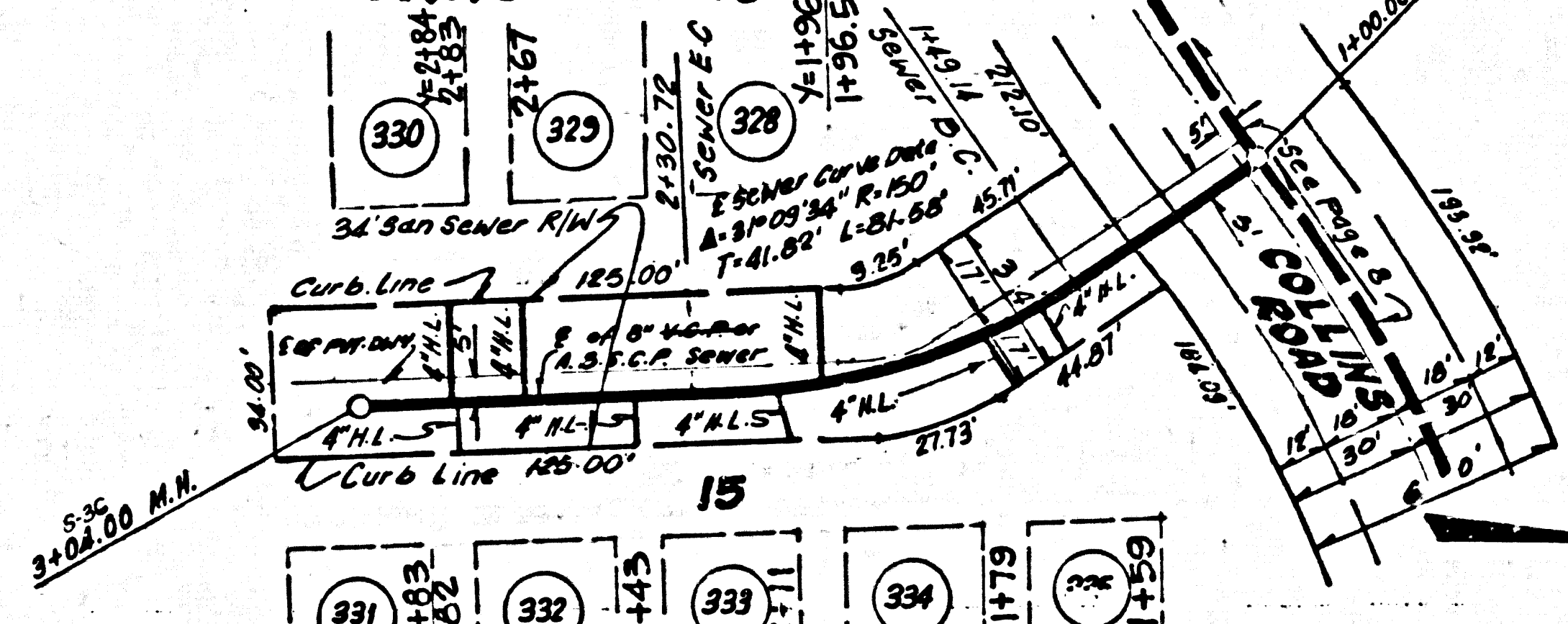
TRACT NO 38519



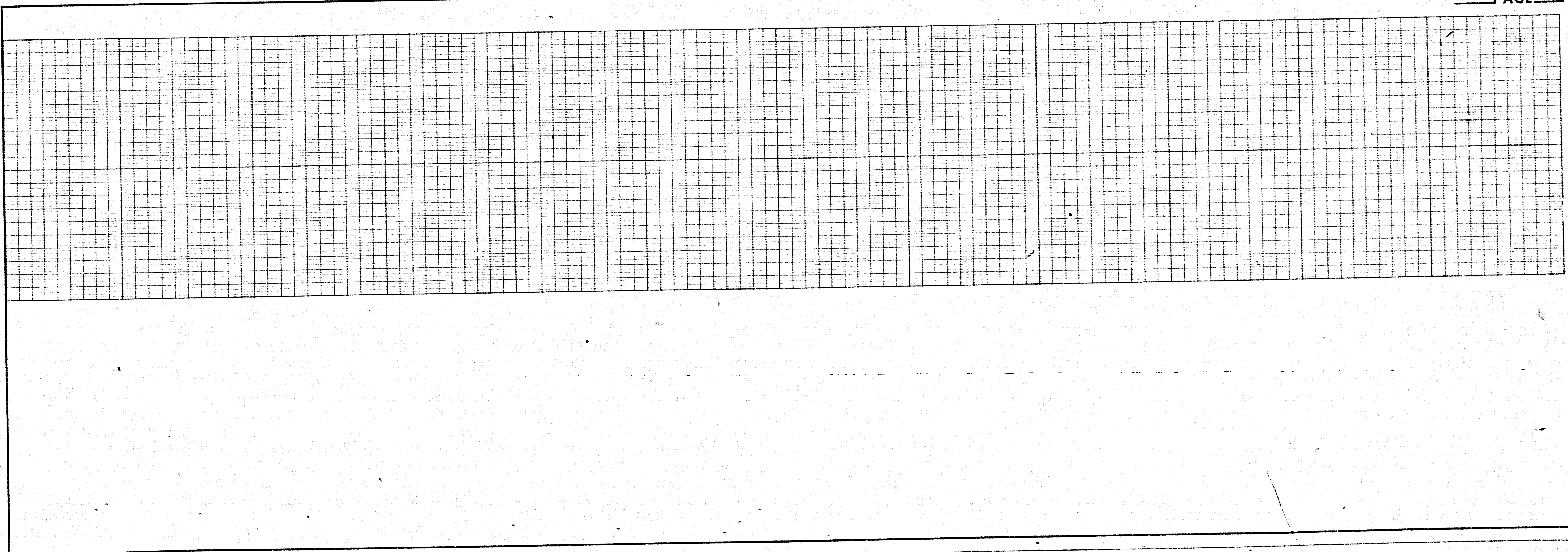
TRACT NO 38519

Sewer Curve Data
 R=150' L=71.62' T=38.50'

TRACT NO 38519



TRACT NO 38519



2010 29 0288 9N T39AT