

SANITARY SEWERS

TO BE CONSTRUCTED IN

TRACT No 38302  
PRIVATE CONTRACT NO. 10112

C-A-26  
W.S. 62

4 SHEETS, 7 PAGES

50393

SCALE: VERT. 1" = 5'  
HORIZ. 1" = 20'

DATE: DECEMBER 1, 1982  
PREPARED IN THE OFFICES OF  
LIND & HILLERUP, INC.  
2225 HUNTINGTON DRIVE  
SAN FRANCISCO, CA 94106

BY: [Signature]  
REG. C. E. No. 19233

THE FOLLOWING LATEST REVERSED STANDARD PLANS ON FILE IN THE OFFICE OF THE COUNTY ENGINEER SHALL APPLY IN THE CONSTRUCTION OF THIS PROJECT:

URDING	5-1
MINIMUM PUBLIC SAFETY REQUIREMENTS	5-2
BACK MANHOLE	5-3
STANDARD MANHOLE STEP	5-7
BEARING FOR SEWER PIPE	5-8
CHANGING AND ENCASING	5-9
WYS ON THE SUPPORT	5-10
ALLOWABLE TRENCH WIDTHS	5-11
LOCKING MANHOLE FRAME AND COVER	5-12
NON-REINFORCED PRECAST CONCRETE MANHOLES	5-13
TRENCHING TECHNIQUES FOR PLASTIC PIPES	5-14
SPECIAL HOUSE LATERALS	5-15

COUNTY OF LOS ANGELES, CALIFORNIA

STEPHEN J. KOONCE, COUNTY ENGINEER  
WALTER E. GARRISON, CHIEF ENGINEER

APPROVED: [Signatures]  
DATE: 5/1/83

CHECKED: [Signatures]  
DATE: 5/1/83

SANTA CLARITA VALLEY BLDG. DIST. B.2.

PRIVATE ENGINEER NOTICE TO CONTRACTORS

The existence and location of any underground utility pipes or structures shown on these plans are obtained by search of the available records. To the best of our knowledge there are no existing utilities except as shown on these plans. The contractor is required to take due precautionary measures to protect the utility lines shown and any other lines not of record or not shown on these plans.

[Signature]  
Registered Engineer R.C.E. 19233

ALLOW NO CONNECTIONS UNTIL OUTLET SEWER P.C. 0857 IS ACCEPTED FOR PUBLIC USE BY THE COUNTY OF L.A.

CONSTRUCTION NOTES CONT'D.

1. FULL COMPLIANCE WITH PART 12 OF THE SPECIAL PROVISIONS IS REQUIRED FOR THE INSTALLATION OF A.S.S. COMPOSITE PIPE.
2. MANHOLE WATER STOP GASKETS & CLAMPS ARE REQUIRED FOR THE CONNECTION OF A.S.S. COMPOSITE PIPE TO MANHOLES STRUCTURES.
3. A.S.S. SOLID WALL PIPE MUST BE USED FOR WYS & HOUSE LATERAL CONNECTIONS TO A.S.S. COMPOSITE MAINLINE SEWER PIPES.
4. A.S.S. COMPOSITE PIPE SHALL BE BEDDED IN CONFORMANCE WITH THE TABLE IN SECTION B-3.1 OF PART 12 OF THE SPECIAL PROVISIONS.
5. THREE DEGREE DEFLECTION COUPLERS ARE REQUIRED FOR CURVATURES LESS THAN 300 FEET WITH USING A.S.S.C.P.
6. NO CONNECTIONS FOR DISPOSAL OF INDUSTRIAL WASTE IS ALLOWED IF A.S.S. COMPOSITE PIPE IS USED.

NO CONNECTION FOR THE DISPOSAL OF INDUSTRIAL WASTES SHALL BE MADE TO SEWERS SHOWN ON THESE DRAWINGS UNTIL A PERMIT FOR INDUSTRIAL WASTEWATER DISCHARGE HAS BEEN ISSUED BY THE SANITATION DISTRICTS FOR SAID CONNECTION. BEFORE BREAKING INTO OR CONSTRUCTION ON A COUNTY SANITATION DISTRICT SEWER AND PRIOR TO FINAL ACCEPTANCE OF THE PROJECT, SANITATION DISTRICT INSPECTOR SHALL BE NOTIFIED BY PHONE - 942-1803, 638-2362 SO THAT REQUIRED INSPECTION CAN BE MADE.

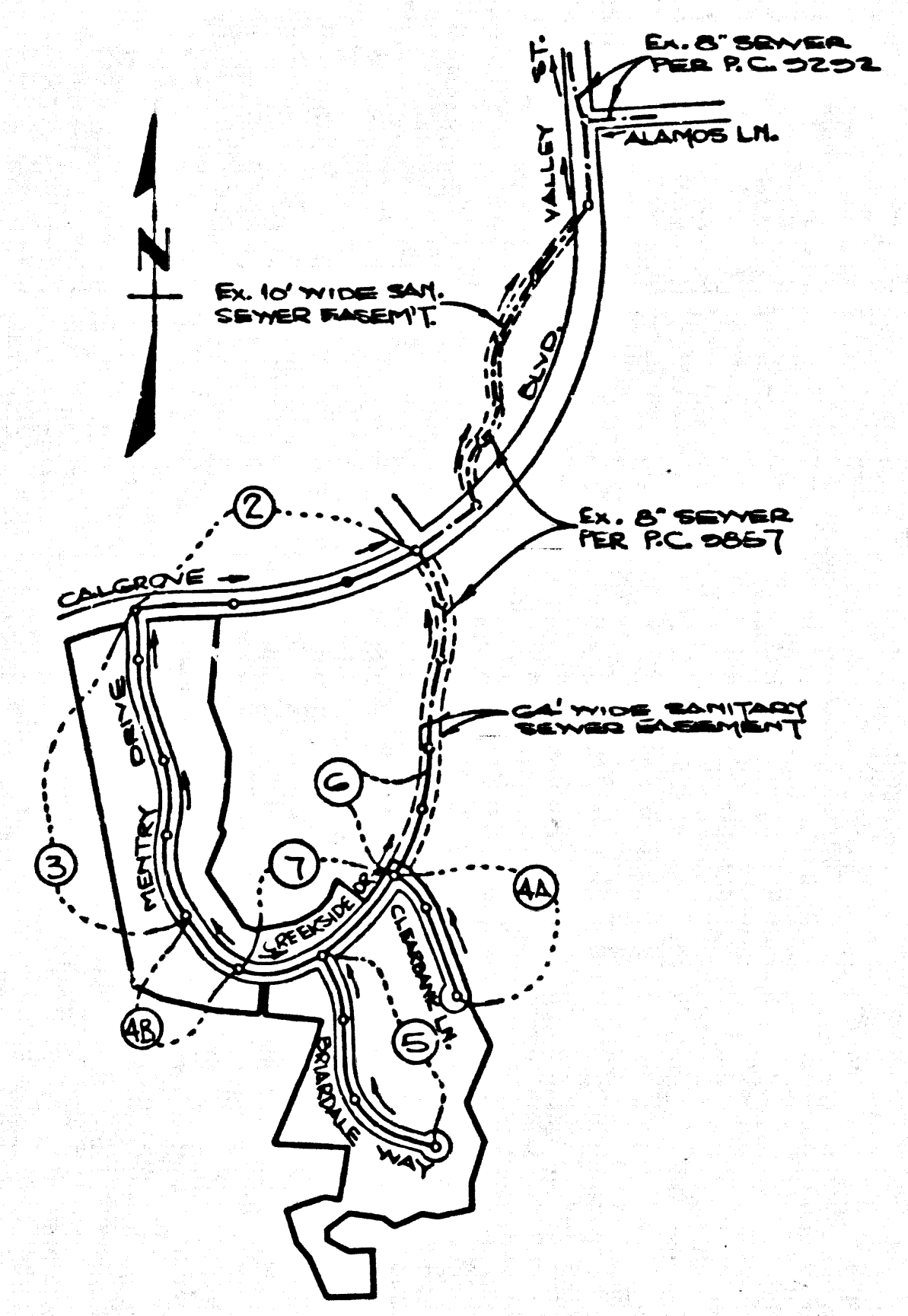
GENERAL NOTES: DOUBLE SCALE

1. ELEVATIONS ARE IN FEET ABOVE U.S.C. & G.S. SEA LEVEL DATUM OF 1929.
2. NO REVISIONS SHALL BE MADE IN THESE PLANS WITHOUT THE APPROVAL OF THE COUNTY ENGINEER.
3. NO REPRESENTATIVE OF THE COUNTY ENGINEER WILL SURVEY OR LAY OUT ANY PORTION OF THE WORK.
4. GRADES TO WHICH THIS IMPROVEMENT IS TO BE CONSTRUCTED ARE SHOWN ON PLANS AND PROFILES. GRADE POINTS FOR TOP OF CURBS, CENTER LINE OF STREETS, OR CENTER LINE OF ALLEYS ARE SHOWN BY CIRCLES ON PROFILES. AT ALL POINTS BETWEEN DESIGNATED POINTS THE GRADE SHALL BE ESTABLISHED SO AS TO CONFORM TO A STRAIGHT LINE DRAWN BETWEEN SAID DESIGNATED POINTS.
5. THE PRIVATE ENGINEER SHALL FURNISH THE COUNTY ENGINEER WITH GRADE SHEETS AND STATIONING FOR ALL HOUSE LATERALS AND "T" OR "Y" BRANCHES AND SHALL PROVIDE STAKES FOR THEM AT THEIR PROPER LOCATIONS WITH STATIONING PLAINLY MARKED. ALL HOUSE LATERALS SHALL BE CONSTRUCTED IN A STRAIGHT ALIGNMENT AT RIGHT ANGLES FROM THE MAIN LINE SEWER EXCEPT AS SHOWN ON THE PLANS. HOUSE LATERALS FROM CHIMNEYS SHALL NOT HAVE AN ANGLE OF LESS THAN 45° WITH THE MAIN LINE SEWER. ANY CHANGE IN ALIGNMENT SHALL BE REQUESTED IN WRITING BY THE PRIVATE ENGINEER.
6. THE PRIVATE ENGINEER SHALL FURNISH THE HOUSE LATERAL DEPTH AT THE PROPERTY LINE BELOW THE TOP OF CURB ELEVATION FOR EACH HOUSE LATERAL ON THE GRADE SHEET.
7. BEFORE WORK CAN BE STARTED, THE CONTRACTOR MUST OBTAIN A PERMIT TO EXCAVATE IN COUNTY STREETS FROM THE L.A. COUNTY ROAD DEPT., DISTRICT OFFICE NO. 5, AND PAY A FEE TO THE COUNTY ENGINEER, 880 S. VERNON AVENUE, LOS ANGELES, CA 90008, TO COVER THE COST OF CONSTRUCTION INSPECTION AND RECORD PLANS.
8. IF WORK IS TO BE DONE IN A STATE HIGHWAY A PERMIT MUST BE OBTAINED FROM THE STATE OF CALIFORNIA, DIVISION OF HIGHWAYS, 120 SOUTH BRIDGE STREET, LOS ANGELES, CALIFORNIA.
9. APPROVAL OF THIS PLAN BY THE COUNTY OF LOS ANGELES DOES NOT CONSTITUTE A REPRESENTATION AS TO THE ACCURACY OF THE LOCATION OF OR THE EXISTENCE OR NON-EXISTENCE OF ANY UNDERGROUND UTILITY PIPE, OR STRUCTURE WITHIN THE LIMITS OF THIS PROJECT. THIS NOTE APPLIES TO ALL PAGES.
10. REFER TO SECTION 7.1.1 OF THE STANDARD SPECIFICATIONS, REGARDING SAFETY ORDERS.
11. PRIOR TO THE ISSUANCE OF THE REQUIRED SEWER CONSTRUCTION PERMIT, THE CONTRACTOR SHALL OBTAIN AND FILE WITH THE COUNTY ENGINEER COPIES OF A PERMIT TO EXCAVATE IN COUNTY STREETS FROM THE LOS ANGELES COUNTY ROAD DEPARTMENT, A PERMIT FOR EXCAVATIONS AND TRENCHES FROM THE STATE OF CALIFORNIA, DIVISION OF INDUSTRIAL SAFETY AND A CERTIFICATE OF WORKERS COMPENSATION INSURANCE WITH THE DEPARTMENT OF COUNTY ENGINEER, 880 SOUTH VERNON, RM. 406, LOS ANGELES, CALIFORNIA 90008, NAMED AS THE CERTIFICATE HOLDER TO BE NOTIFIED 30 DAYS PRIOR TO CANCELLATION OF POLICY.

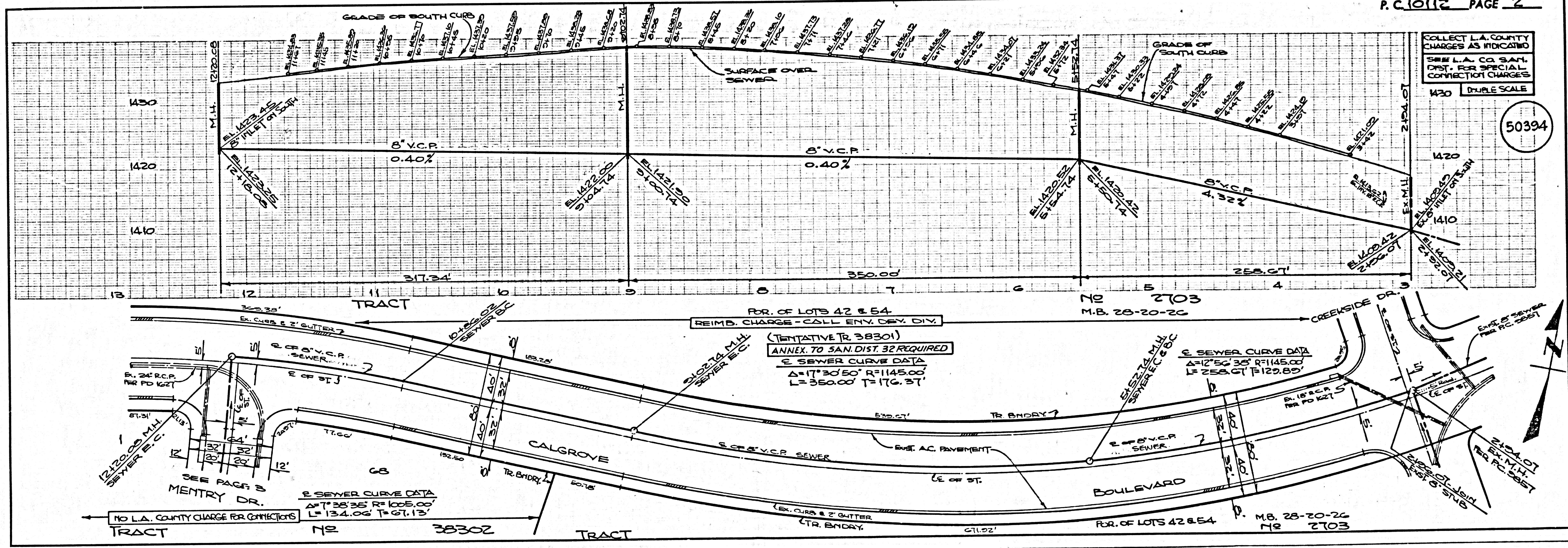
CONSTRUCTION NOTES:

1. WORK SHALL BE CONSTRUCTED ACCORDING TO THE STANDARD SPECIFICATIONS FOR PUBLIC WORKS CONSTRUCTION (1982 EDITION) AND COUNTY ENGINEER SPECIAL PROVISIONS FOR THE CONSTRUCTION OF SANITARY SEWERS DATED SEPT. 21, 1976, AND SHALL BE PROSECUTED ONLY IN THE PRESENCE OF THE COUNTY ENGINEER.
2. THE CONTRACTOR SHALL NOTIFY THE ENVIRONMENTAL DEVELOPMENT DIVISION BY TELEPHONE, 738-2186, AT LEAST TWENTY-FOUR HOURS BEFORE STARTING ANY WORK UNDER THIS CONTRACT.
3. HOUSE LATERALS TO BE CONSTRUCTED WITH INVERTS AT PROPERTY LINE 8 FEET BELOW CURB GRADE EXCEPT AS NOTED.
4. WYS OR TEE BRANCHES MAY BE USED FOR CONNECTIONS TO MAINLINE SEWERS EXCEPT AS NOTED.
5. ALL STRUCTURES SHALL BE SET ON PRECAST CONCRETE MANHOLES PER S-3, EXCEPT AS NOTED.
6. PROVIDE STAKES ON THE PROPERTY LINE OR PROPERTY LINES PRODUCED AT RIGHT ANGLES TO THE SEWER LINE AT THE CENTER LINE OF EACH MANHOLE.
7. MANHOLE TOPS IN UNIMPROVED AREAS MAY TO BE SIX INCHES ABOVE FINISHED GRADE.
8. WITHIN CLAY PIPE JOINTS SHALL BE TYPE "D" OR "E" PER STANDARD SPECIFICATIONS SECTION 308.8.
9. IF A POWER POLE IS WITHIN THREE FEET OF THE SEWER, THE SEWER SHALL BE ENCASED, PER S-28, CASE B, TWO FEET ON EACH SIDE FROM THE POINT OF INTERFERENCE.
10. IF DURING THE COURSE OF CONSTRUCTION IT IS DETERMINED THAT THERE IS LESS THAN FOUR FEET OF COVER OVER THE TOP OF A MAIN LINE OR HOUSE LATERAL SEWER WHICH IS NOT INDICATED ON THE PLANS, THE PIPE SHALL BE ENCASED PER S-28, CASE B UNLESS OTHERWISE APPROVED BY THE COUNTY ENGINEER.
11. ALL JOINTS BETWEEN CAST IRON PIPE AND VITRIFIED CLAY PIPE SHALL BE MADE WITH A RUBBER SLEEVE JOINT, TYPE "D" OR "E", (WITH PURGING IF NECESSARY) PER STANDARD SPECIFICATIONS SECTION 308.7.
12. ALL JOINTS BETWEEN VITRIFIED CLAY PIPE AND A.S.S.C.P. SHALL BE MADE WITH A RUBBER SLEEVE JOINT, TYPE "D" OR "E", PER STANDARD SPECIFICATIONS SECTION 308.7.
13. SEWERS TO BE TESTED FOR LEAKAGE PER SECTION 308.7.5 OF THE STANDARD SPECIFICATIONS AND ALL PROVISIONS.
14. REINFORCE ALL TRENCHES WITHIN PAVED AREAS TO MEET L.A. COUNTY ROAD DEPT. OR CALIFORNIA STATE HIGHWAY REQUIREMENTS IN ACCORDANCE WITH PERMITS.
15. FULL COMPLIANCE WITH SECTION 308.1.3.3 OF THE SPECIAL PROVISIONS WILL BE REQUIRED FOR BACKFILL IN STREETS. CERTIFICATION OF BACKFILL COMPACTION AND SAND EQUIVALENTS BY A QUALIFIED, REGISTERED TESTING LABORATORY SHALL BE PROVIDED BY THE PERMITTEE PRIOR TO THE ISSUANCE OF A CERTIFICATE OF PARTIAL ACCEPTANCE.
16. SPECIAL BACKFILL IN EASEMENT CONSTRUCTION (A) BACKFILL TRENCH AND REPLACE OTHER EARTH SO AS TO ACHIEVE THE NATURAL OR FINISHED GRADES AND SLOPES SHOWN ON THE GRADING PLAN APPROVED FOR THIS DEVELOPMENT BY THE BUILDING AND SAFETY DIVISION. (B) ALL BACKFILL AND EARTH REPLACED SHALL BE COMPACTED TO A MINIMUM OF 90% OF MAXIMUM DENSITY PER A.S.T.M. STD. METHOD OF TEST D1557 AS MODIFIED. ACCEPTABLE CERTIFICATION OF SUCH COMPACTION SHALL BE SUBMITTED TO THE ENVIRONMENTAL DEVELOPMENT DIVISION.

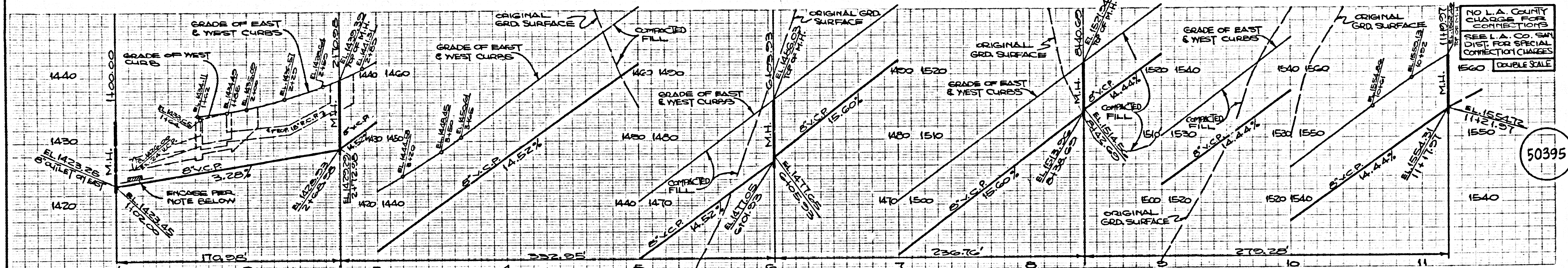
B.M. BLS13 ELEV. 1336.765  
LET CONC WALK TO USE 23410  
MAPLE ST 105 FT S C/L &  
GOFT W 9/4 VALLEY ST  
NEWHALL QUAD. 1912



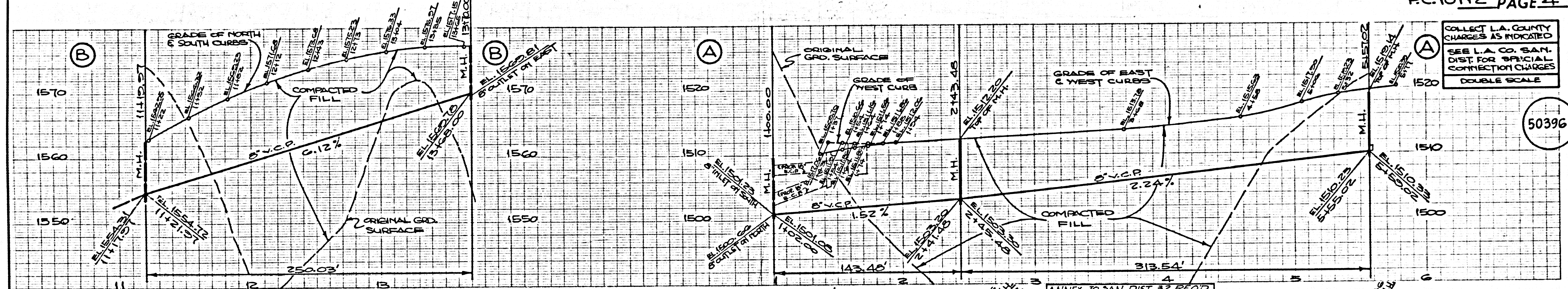
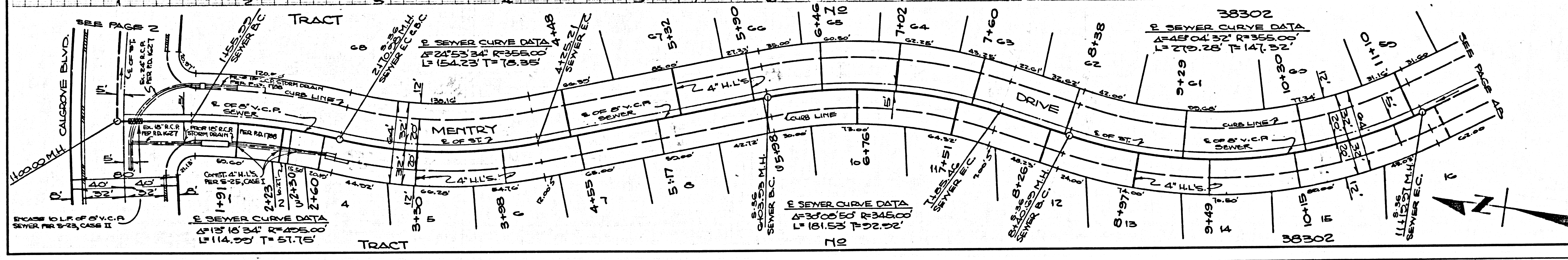
INDEX MAP  
TRACT NO 38302  
P.C. 10112  
SCALE: 1" = 600'



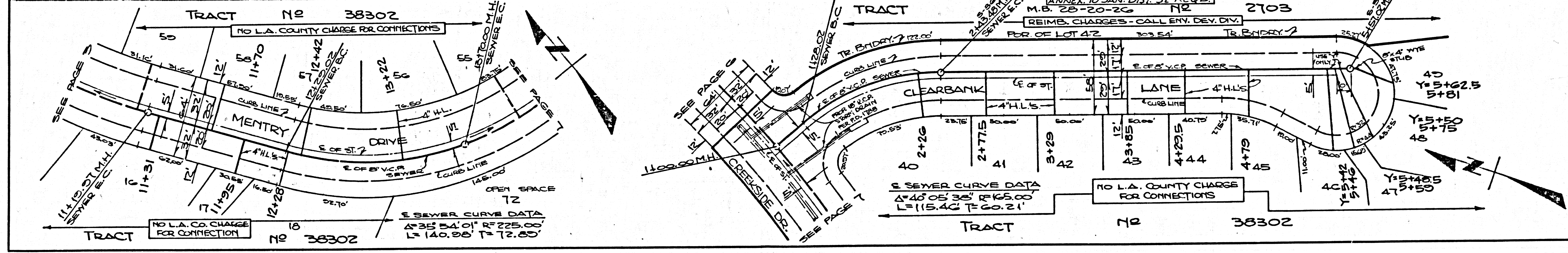
COLLECT L.A. COUNTY CHARGES AS INDICATED  
SEE L.A. CO. SAN. DIST. FOR SPECIAL CONNECTION CHARGES  
1430 DOUBLE SCALE  
50394



50395



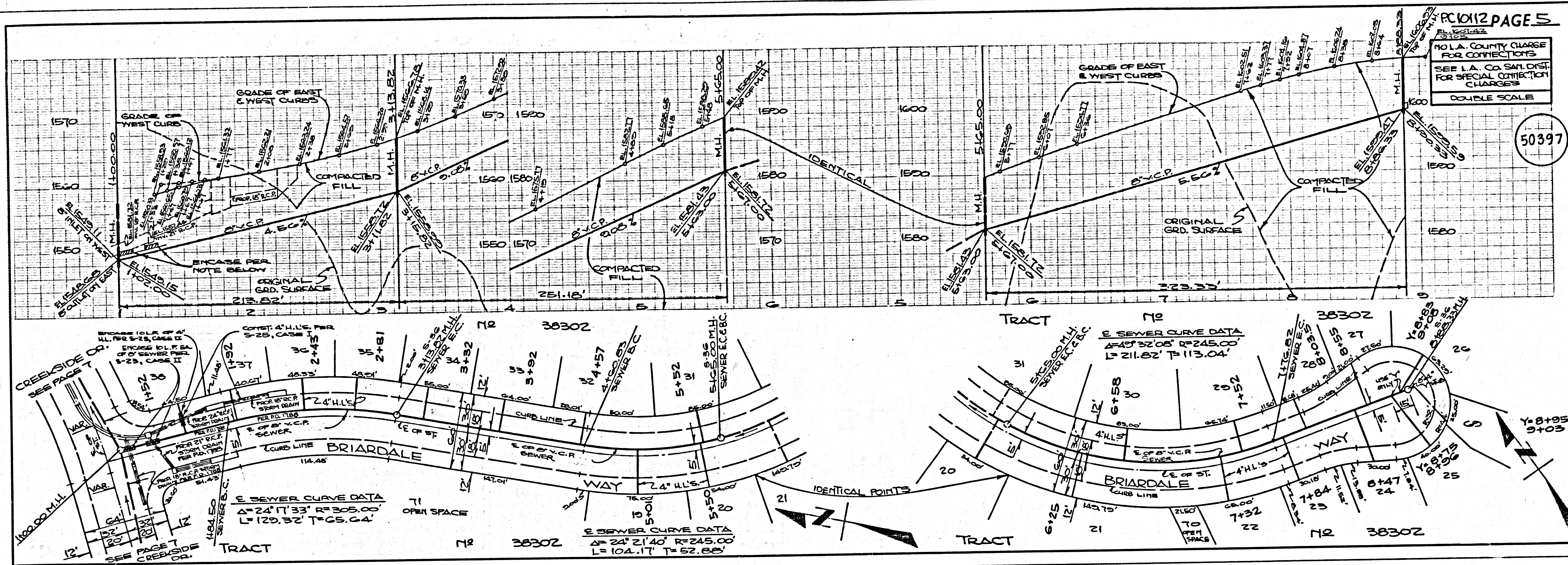
50396



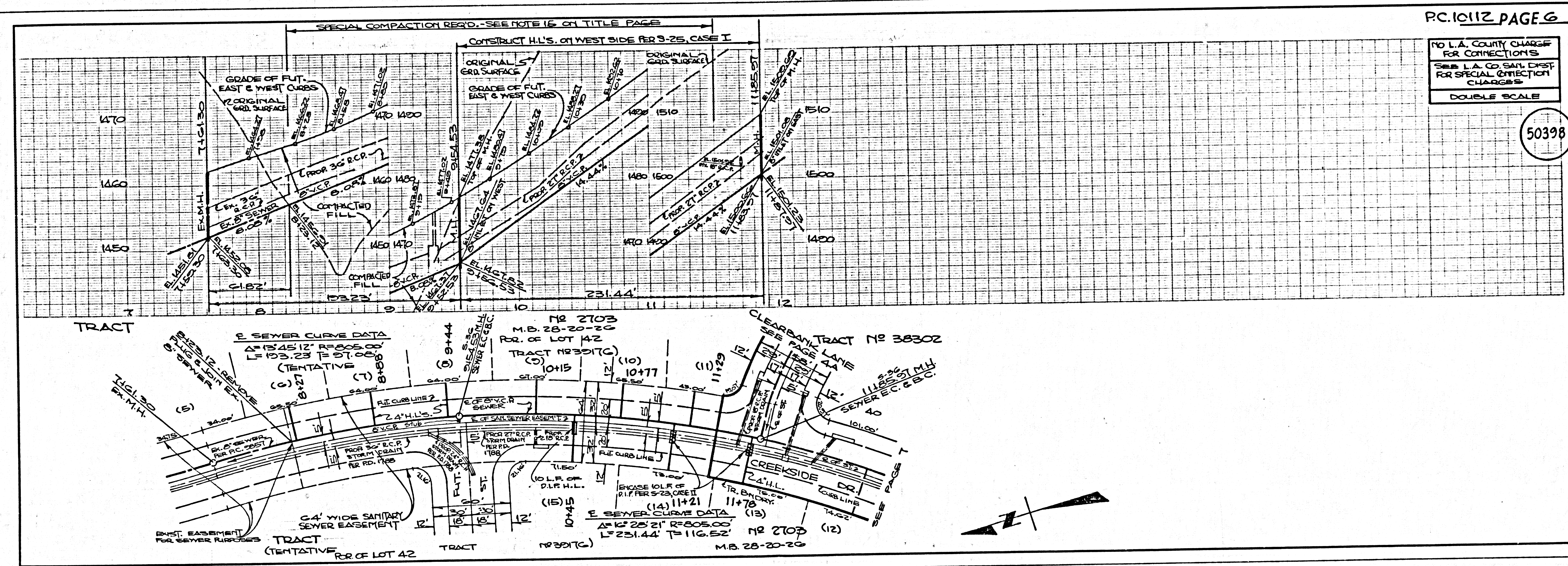
5

50395

50396



B.C. 10115



TRACT 48 38303

