

SANITARY SEWERS

TO BE CONSTRUCTED IN

TRACT No 39176
PRIVATE CONTRACT NO. 10113

C-A-26
W.S. 62
2 SHEETS, 3 PAGES

50423

SCALE: VERT. 1"=5'
HORIZ. 1"=20'

DECEMBER, 1982

PREPARED IN THE OFFICES OF

LIND & WILLEQUID, INC.

2500 WILMINGTON DRIVE
SANTA ANITA, CA 91108

BY: [Signature]
REG. C. E. No. 19233

THE FOLLOWING LATEST REVISED STANDARD PLANS ON FILE IN THE OFFICE OF THE COUNTY ENGINEER SHALL APPLY IN THE CONSTRUCTION OF THIS PROJECT:

Table with 2 columns: Item description and Page number. Includes items like LEGEND, MINIMUM PUBLIC SAFETY REQUIREMENTS, BRICK MANHOLE, etc.

COUNTY OF LOS ANGELES, CALIFORNIA

STEPHEN J. KOONCE, COUNTY ENGINEER WALTER E. GARRISON, CHIEF ENGINEER

APPROVED: [Signature] 5/4/83 APPROVED: [Signature] 5/12/83

CHECKED: [Signature] 5/4/83

REG. C.E. NO. 16813

SANTA CLARITA VALLEY BLDG. DIST. 2.2

PRIVATE ENGINEERS NOTICE TO CONTRACTORS

The existence and location of any underground utility pipes or structures shown on these plans are obtained by search of the available records. To the best of our knowledge there are no existing utilities except as shown on these plans. The contractor is required to take due precautionary measures to protect the utility lines shown and any other lines not of record or not shown on these plans.

[Signature]
Registered Engineer R.C.E. 19233

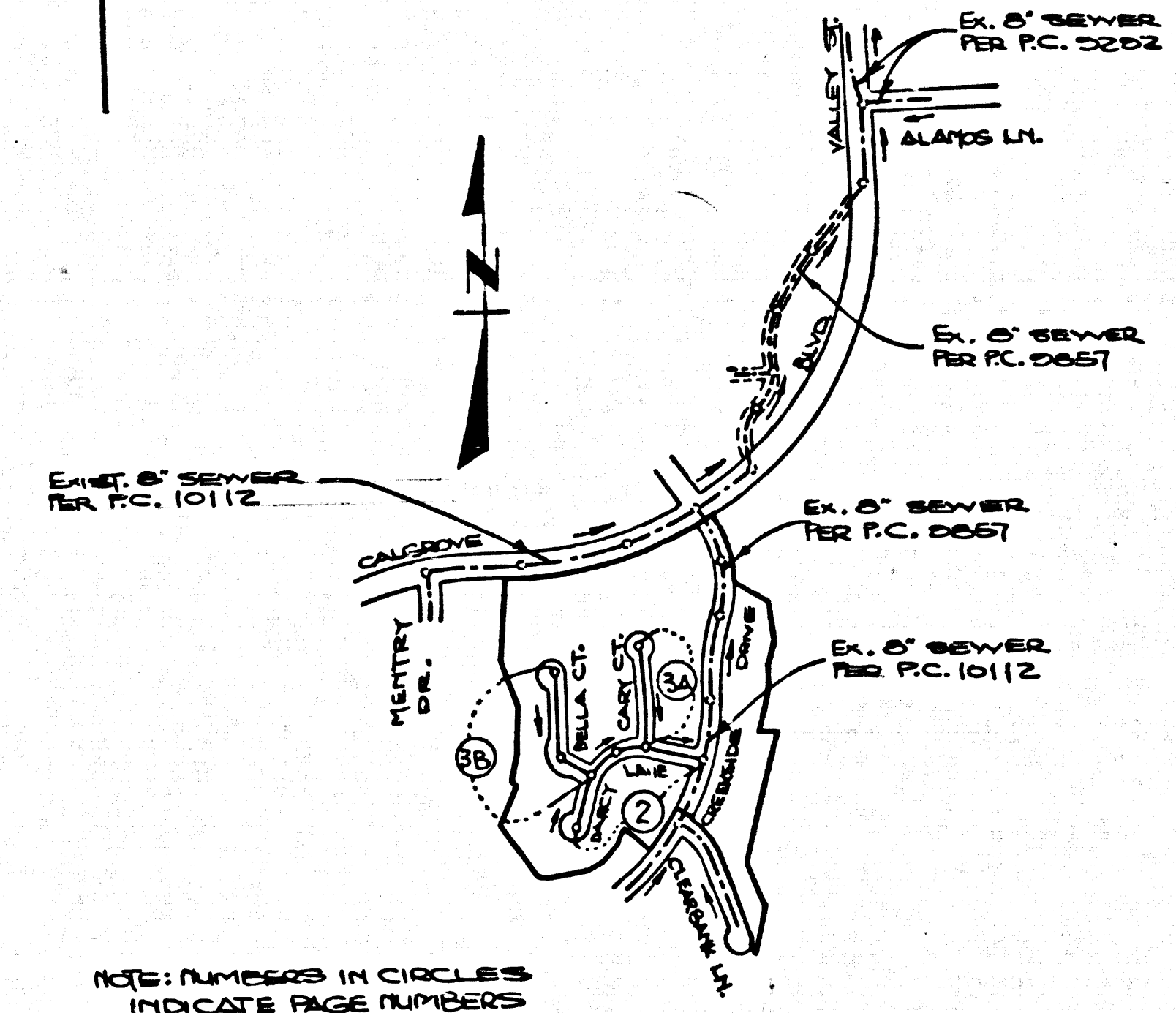
ALLOW NO CONNECTIONS UNTIL OUTLET SEWERS R.C. 2057 & 10112 ARE ACCEPTED FOR PUBLIC USE BY THE COUNTY OF L.A.

CONSTRUCTION NOTES CONT'D.

- 1. FULL COMPLIANCE WITH PART IX OF THE SPECIAL PROVISIONS IS REQUIRED FOR THE INSTALLATION OF A.B.S. COMPOSITE PIPES.
7. MANHOLE WATER TIGHT GASKETS & CLAMPS ARE REQUIRED FOR THE CONNECTION OF A.B.S. COMPOSITE PIPE TO MANHOLE STRUCTURES.
8. A.B.S. SOLID WALL PIPE MUST BE USED FOR WYE & HOUSE LATERAL CONNECTIONS TO A.B.S. COMPOSITE MAINLINE SEWER PIPES.
10. A.B.S. COMPOSITE PIPE SHALL BE BEDDED IN CONFORMANCE WITH THE TABLE IN SECTION D-3.1 OF PART IX OF THE SPECIAL PROVISIONS.
12. THREE DEGREE DEFLECTION COEFFICIENTS ARE REQUIRED FOR RADII OF CURVATURES LESS THAN 250 FEET WHEN USING 6" A.B.S.C.P.
21. NO CONNECTIONS FOR DISPOSAL OF INDUSTRIAL WASTES IS ALLOWED IF A.B.S. COMPOSITE PIPE IS USED.

NOTE: LOTS 1 THRU 5 SERVED BY R.C. 2057 P.S. 11
LOTS 6 THRU 15 SERVED BY R.C. 10112 P.S. 6 & 7

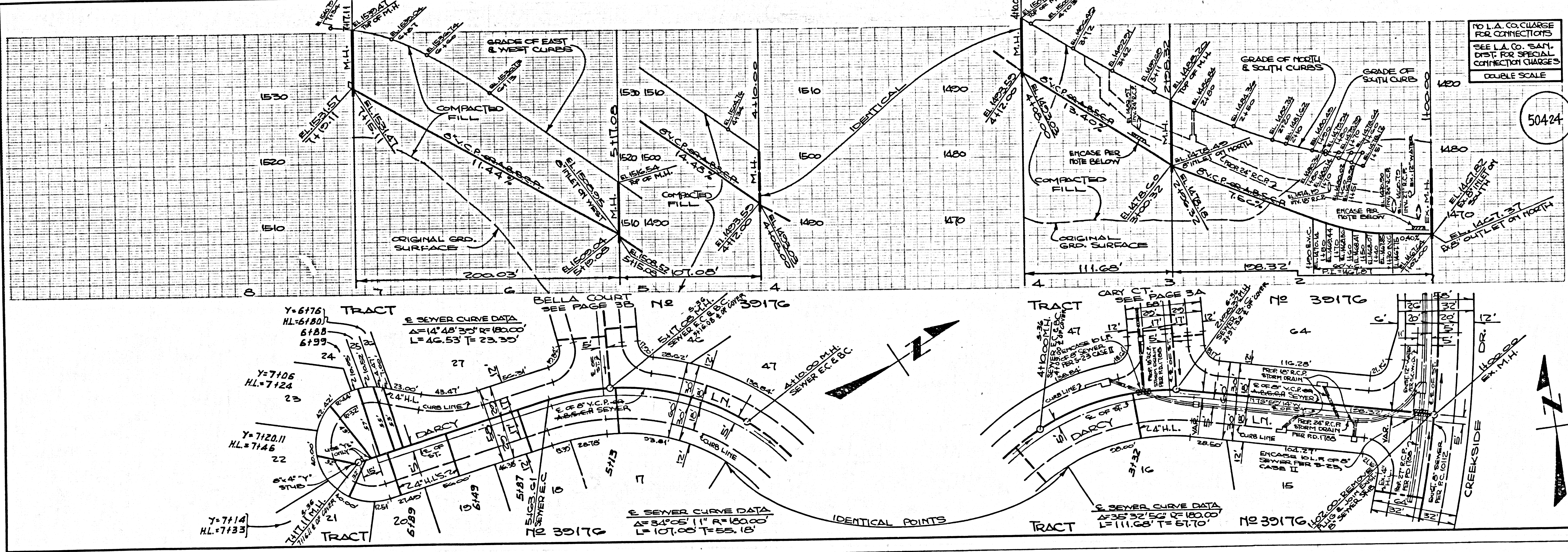
B.M. 51513 ELEV. 1338.785
1' AT CONC WALK TO USE
23x10 MAPLE ST 106 FT
5' W/L & 60 FT W/L VALLEY ST
NEWHALL QUAD. 1912



NOTE: NUMBERS IN CIRCLES INDICATE PAGE NUMBERS

NO CONNECTION FOR THE DISPOSAL OF INDUSTRIAL WASTES SHALL BE MADE TO SEWERS SHOWN ON THESE DRAWINGS UNTIL A PERMIT FOR INDUSTRIAL WASTEWATER DISCHARGE HAS BEEN ISSUED BY THE SANITATION DISTRICTS FOR SAID CONNECTION. BEFORE BREAKING INTO OR CONSTRUCTION ON A COUNTY SANITATION DISTRICT SEWER PRIOR TO FINAL ACCEPTANCE OF THE PROJECT, SANITATION DISTRICT INSPECTOR SHALL BE NOTIFIED BY PHONE - 842-8605, 838-3364 SO THAT REQUIRED INSPECTION CAN BE MADE.

INDEX MAP
TRACT No 30176
R.C. 10113
SCALE: 1"=200'



NO L.A. CO. CHARGE FOR CONNECTIONS
SEE L.A. CO. SAN. DIST. FOR SPECIAL CONNECTION CHARGES
DOUBLE SCALE

50424

STRES BY TCAST



