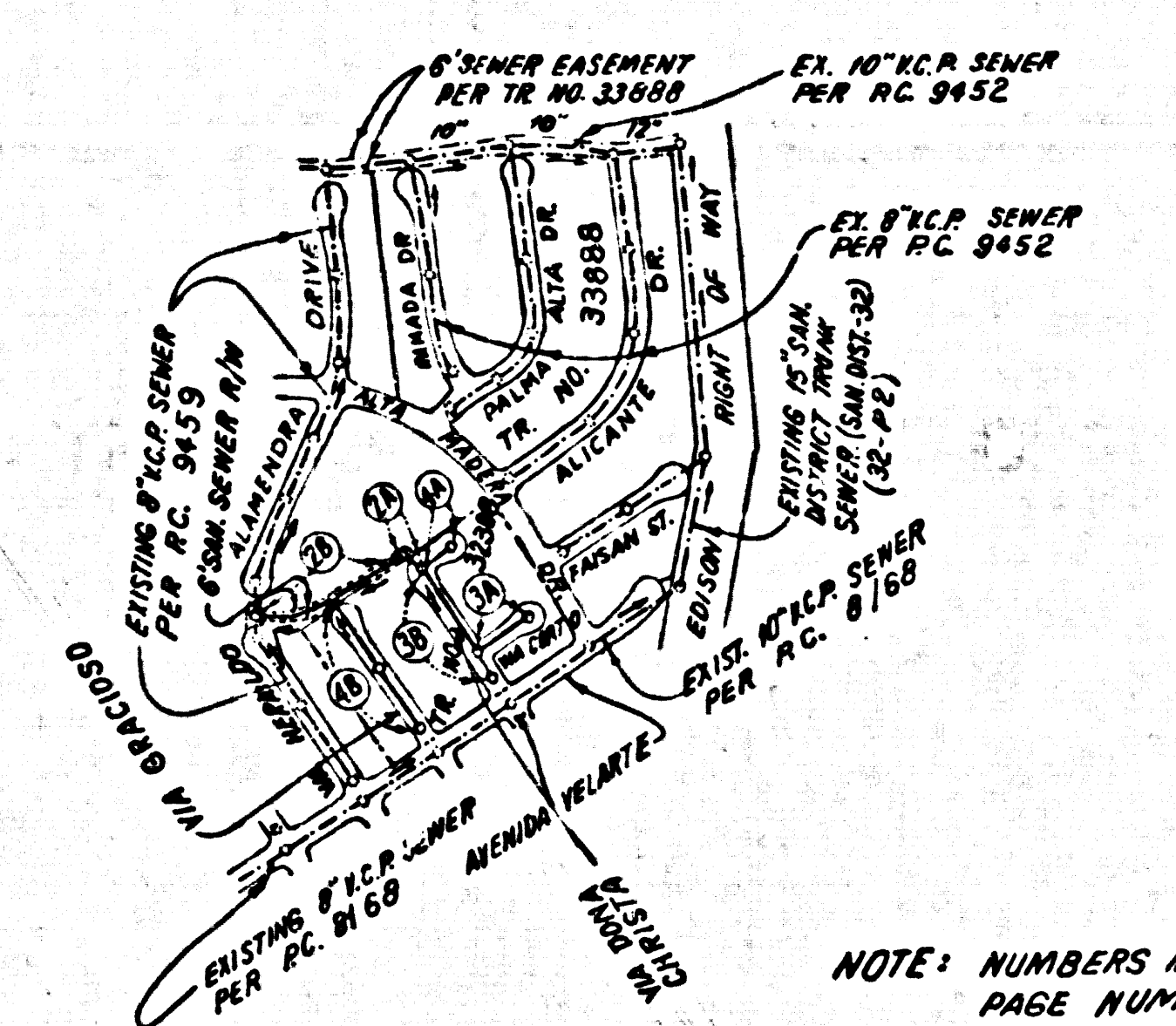


TRACT NO. 32308
PRIVATE CONTRACT NO. 10122

W.S. 62
 2 SHEETS, 4 PAGES
 VHT. 1" = 4'
 HONE. 1" = 4'
 SCALE: MAY 20, 1983
 PREPARED IN THE OFFICES OF
 SIKAND ENGINEERING ASSOCIATES
 15230 BURBANK BLVD. VAN NUYS
 CALIF. 91411 (213) 787-8550
 BY: *Norah C. G...*
 REG. C. E. No. 21833

50080

B.M. CL 4236 ELEV. 1211.497
 RD. BM TAG N CB AVENIDA NAVARRE
 77° E & 30' N/O INT. McBEAN PKWY
 @ NE COR
 NEW HALL QUAD. 1978



INDEX MAP
 SCALE 1" = 600'
 P.C. NO. 10122
 TRACT NO. 32308

NOTE: NUMBERS IN CIRCLES INDICATE PAGE NUMBERS

NO CONNECTION FOR THE DISPOSAL OF INDUSTRIAL WASTES SHALL BE MADE TO SEWERS SHOWN ON THESE DRAWINGS UNTIL A PERMIT FOR INDUSTRIAL WASTEWATER DISCHARGE HAS BEEN ISSUED BY THE SANITATION DISTRICTS FOR SAID CONNECTION.
 BEFORE BREAKING INTO OR CONSTRUCTION ON A COUNTY SANITATION DISTRICT SEWER AND PRIOR TO FINAL ACCEPTANCE OF THE PROJECT, SANITATION DISTRICT INSPECTOR SHALL BE NOTIFIED BY PHONE - 962-8405, 638-3382 SO THAT REQUIRED INSPECTION CAN BE MADE.

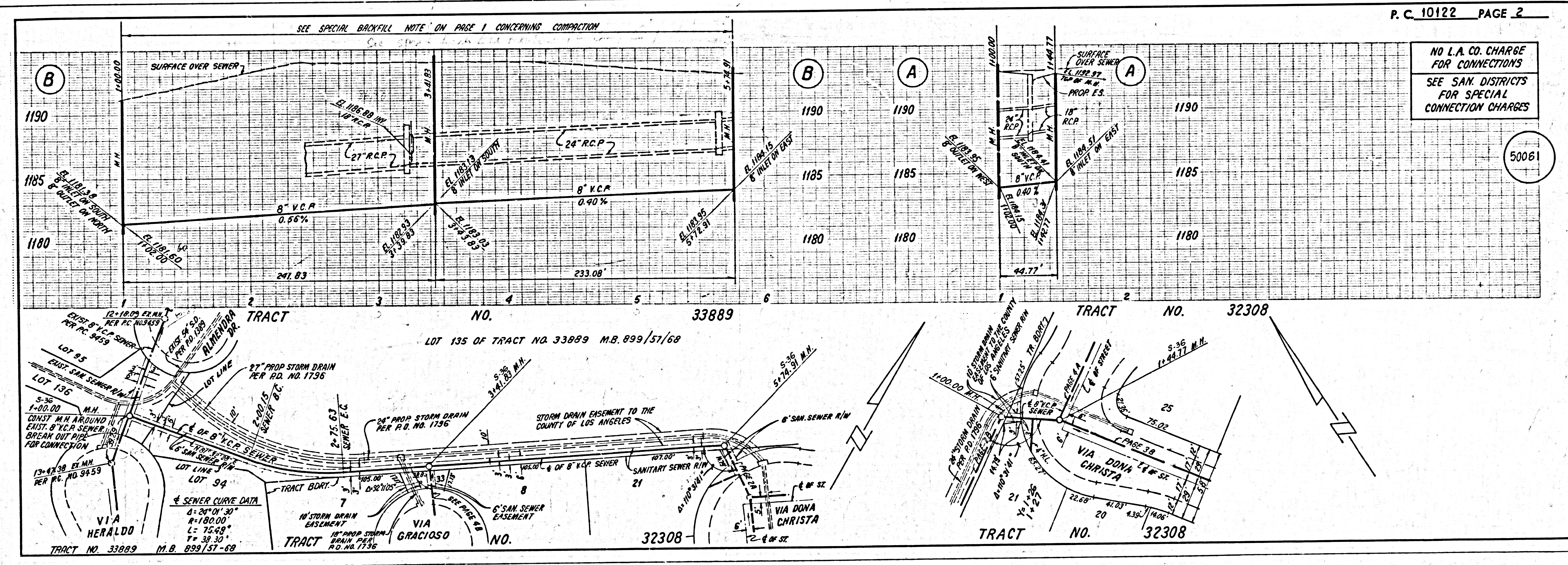
- GENERAL NOTES:**
1. ELEVATIONS ARE IN FEET ABOVE U.S.C. & G.S. SEA LEVEL DATUM OF 1983.
 2. NO REVISIONS SHALL BE MADE IN THESE PLANS WITHOUT THE APPROVAL OF THE COUNTY ENGINEER.
 3. NO REPRESENTATIVE OF THE COUNTY ENGINEER WILL SURVEY OR LAY OUT ANY PORTION OF THE WORK.
 4. GRADES TO WHICH THIS IMPROVEMENT IS TO BE CONSTRUCTED ARE SHOWN ON PLANS AND PROFILES. GRADE POINTS FOR TOP OF CURBS, CENTER LINE OF STREETS, OR CENTER LINE OF ALLEYS ARE SHOWN BY CIRCLES ON PROFILES. AT ALL POINTS BETWEEN DESIGNATED POINTS THE GRADE SHALL BE ESTABLISHED SO AS TO CONFORM TO A STRAIGHT LINE DRAWN BETWEEN SAID DESIGNATED POINTS.
 5. THE PRIVATE ENGINEER SHALL FURNISH THE COUNTY ENGINEER WITH GRADE SHEETS AND STATIONING FOR ALL HOUSE LATERALS AND "10" OR "12" BRANCHES AND SHALL PROVIDE STAKES FOR THE SAME AT THEIR PROPER LOCATIONS WITH STATIONING PLAINLY MARKED. ALL HOUSE LATERALS SHALL BE CONSTRUCTED IN A STRAIGHT ALIGNMENT AT RIGHT ANGLES FROM THE MAIN LINE SEWER EXCEPT AS SHOWN ON THE PLANS. HOUSE LATERALS FROM CHIMNEYS SHALL NOT HAVE AN ANGLE OF LESS THAN 45° WITH THE MAIN LINE SEWER. ANY CHANGE IN ALIGNMENT SHALL BE REQUESTED IN WRITING BY THE PRIVATE ENGINEER.
 6. THE PRIVATE ENGINEER SHALL FURNISH THE HOUSE LATERAL DEPTH AT THE PROPERTY LINE BELOW THE TOP OF CURB ELEVATION FOR EACH HOUSE LATERAL ON THE GRADE SHEET.
 7. BEFORE WORK CAN BE STARTED, THE CONTRACTOR MUST OBTAIN A PERMIT TO EXCAVATE IN COUNTY STREETS FROM THE L.A. COUNTY ROAD DEPT., DISTRICT OFFICE NO. _____ AND PAY A FEE TO THE COUNTY ENGINEER, 800 S. VERMONT AVENUE, LOS ANGELES, CA 90005 TO COVER THE COST OF CONSTRUCTION INSPECTION AND RECORD PLANS.
 8. IF WORK IS TO BE DONE IN A STATE HIGHWAY, A PERMIT MUST BE OBTAINED FROM THE STATE OF CALIFORNIA, DIVISION OF HIGHWAYS, 120 SOUTH SPRING STREET, LOS ANGELES, CALIFORNIA.
 9. APPROVAL OF THIS PLAN BY THE COUNTY OF LOS ANGELES DOES NOT CONSTITUTE A REPRESENTATION AS TO THE ACCURACY OF THE LOCATION OF OR THE EXISTENCE OR NON-EXISTENCE OF ANY UNDERGROUND UTILITY PIPE, OR STRUCTURE WITHIN THE LIMITS OF THIS PROJECT. THIS NOTE APPLIES TO ALL PAGES.
 10. REFER TO SECTION 7.16.41 OF THE STANDARD SPECIFICATIONS, REGARDING SAFETY ORDERS.
 11. UPON THE ISSUANCE OF THE REQUIRED SEWER CONSTRUCTION PERMIT, THE CONTRACTOR SHALL OBTAIN AND FILE WITH THE COUNTY ENGINEER COPIES OF A PERMIT TO EXCAVATE IN COUNTY STREETS FROM THE LOS ANGELES COUNTY ROAD DEPARTMENT, A PERMIT FOR EXCAVATIONS AND TRENCHES FROM THE STATE OF CALIFORNIA, DIVISION OF INDUSTRIAL SAFETY AND A CERTIFICATE OF WORKERS COMPENSATION INSURANCE WITH THE DEPARTMENT OF COUNTY ENGINEER, 800 SOUTH VERMONT, RM. 406, LOS ANGELES, CALIFORNIA 90005, NAMED AS THE CERTIFICATE HOLDER TO BE NOTIFIED 30 DAYS PRIOR TO CANCELLATION OF POLICY.

- CONSTRUCTION NOTES:**
1. WORK SHALL BE CONSTRUCTED ACCORDING TO THE STANDARD SPECIFICATIONS FOR PUBLIC WORKS CONSTRUCTION (1982 EDITION WITH 2001 SUPPLEMENTS) AND COUNTY ENGINEER SPECIAL PROVISIONS FOR THE CONSTRUCTION OF SANITARY SEWERS DATED 5/27/82. ALL SHALL BE PROTECTED ONLY IN THE PRESENCE OF THE COUNTY ENGINEER.
 2. THE CONTRACTOR SHALL NOTIFY THE ENVIRONMENTAL DEVELOPMENT DIVISION BY TELEPHONE, 726-2186, AT LEAST TWENTY-FOUR HOURS BEFORE STARTING ANY WORK UNDER THE CONTRACT.
 3. HOUSE LATERALS TO BE CONSTRUCTED WITH INVERTS AT PROPERTY LINE 8 FEET BELOW CURB GRADE EXCEPT AS NOTED.
 4. WYE OR TEE BRANCHES MAY BE USED FOR CONNECTIONS TO MAINLINE SEWERS EXCEPT AS NOTED.
 5. ALL STRUCTURES SHALL BE EITHER BRICK MANHOLES PER S-4 OR PRECAST CONCRETE MANHOLES PER S-38, EXCEPT AS NOTED.
 6. PROPOSED STAKES ON THE PROPERTY LINE OR PROPERTY LINES PRODUCED AT RIGHT ANGLES TO THE SEWER LINE AT THE CENTER LINE OF EACH MANHOLE.
 7. MANHOLE TOPS IN UNIMPROVED AREAS TO BE SIX INCHES ABOVE FINISHED GRADE.
 8. WITHEDED CLAY PIPE JOINTS SHALL BE TYPE "D" OR "B" PER STANDARD SPECIFICATIONS SECTION 208-5.
 9. IF A POWER POLE IS WITHIN THREE FEET OF THE SEWER, THE SEWER SHALL BE ENCASED, PER S-25, CASE II, TWO FEET ON EACH SIDE FROM THE POINT OF INTERFERENCE.
 10. IF DURING THE COURSE OF CONSTRUCTION IT IS DETERMINED THAT THERE IS LESS THAN FOUR FEET OF COVER OVER THE TOP OF A MAIN LINE OR HOUSE LATERAL SEWER WHICH IS NOT INDICATED ON THE PLANS, THE PIPE SHALL BE ENCASED PER S-25, CASE II UNLESS OTHERWISE APPROVED BY THE COUNTY ENGINEER.
 11. ALL JOINTS BETWEEN CAST IRON PIPE AND WITHEDED CLAY PIPE SHALL BE MADE WITH A RUBBER BLEEVE JOINT, TYPE "C" OR "D", (WITH BUSHING IF NECESSARY) PER STANDARD SPECIFICATIONS, SECTION 208-5.
 12. SEWERS TO BE TESTED FOR LEAKAGE PER SECTION 208-14 OF THE STANDARD SPECIFICATIONS AND SPECIAL PROVISIONS.
 13. RESURFACE ALL TRENCHES WITHIN PAVED AREAS TO MEET L.A. COUNTY ROAD DEPT. OR CALIFORNIA STATE HIGHWAY REQUIREMENTS IN ACCORDANCE WITH PERMITS.
 14. FULL COMPLIANCE WITH SECTION 208-15.02 OF THE SPECIAL PROVISIONS WILL BE REQUIRED FOR BACKFILL IN STREETS. CERTIFICATION OF BACKFILL COMPACTION AND SAND EQUIVALENTS BY A QUALIFIED, REGISTERED TESTING LABORATORY SHALL BE PROVIDED BY THE PERMITTEE PRIOR TO THE ISSUANCE OF A CERTIFICATE OF PARTIAL ACCEPTANCE.
 15. SPECIAL BACKFILL - IN EASEMENT CONSTRUCTION: (A) BACKFILL TRENCH AND REPLACE OTHER EARTH SO AS TO ACHIEVE THE ORIGINAL OR FINISHED GRADES AND SO COVER SHOWN ON THE GRADING PLANS APPROVED FOR THIS DEVELOPMENT BY THE BUILDING AND SAFETY DIVISION; (B) ALL BACKFILL AND EARTH REPLACED SHALL BE COMPACTED TO A MINIMUM OF 90% OF MAXIMUM DENSITY PER A.S.T.M. STD. METHOD OF TEST D698-65 AS APPROVED. ACCEPTABLE CERTIFICATION OF SUCH COMPACTION SHALL BE SUBMITTED TO THE ENVIRONMENTAL DEVELOPMENT DIVISION.

THE FOLLOWING LATEST REVISED STANDARD PLANS ON FILE IN THE OFFICE OF THE COUNTY ENGINEER SHALL APPLY IN THE CONSTRUCTION OF THIS PROJECT.

LOGS	5-1
MINIMUM PUBLIC SAFETY REQUIREMENTS	5-2
BRICK MANHOLES	5-3
STANDARD MANHOLE STEP	5-4
REINFORCING FOR SEWER PIPE	5-5
CRADLING AND ENCASEMENT	5-29
WYE OR TEE CONNECTION	5-30
ALLOWABLE TRENCH WIDTHS	5-34
LOCKING MANHOLE FRAME AND COVER	5-35
NON-REINFORCED PRECAST CONCRETE MANHOLE	5-38

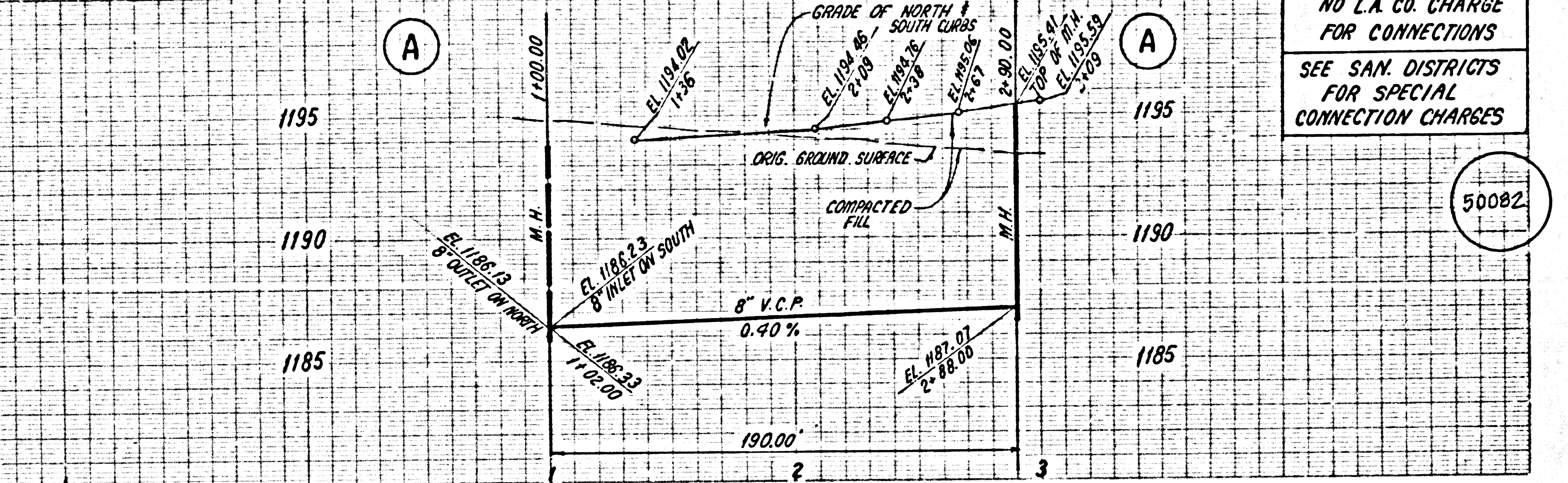
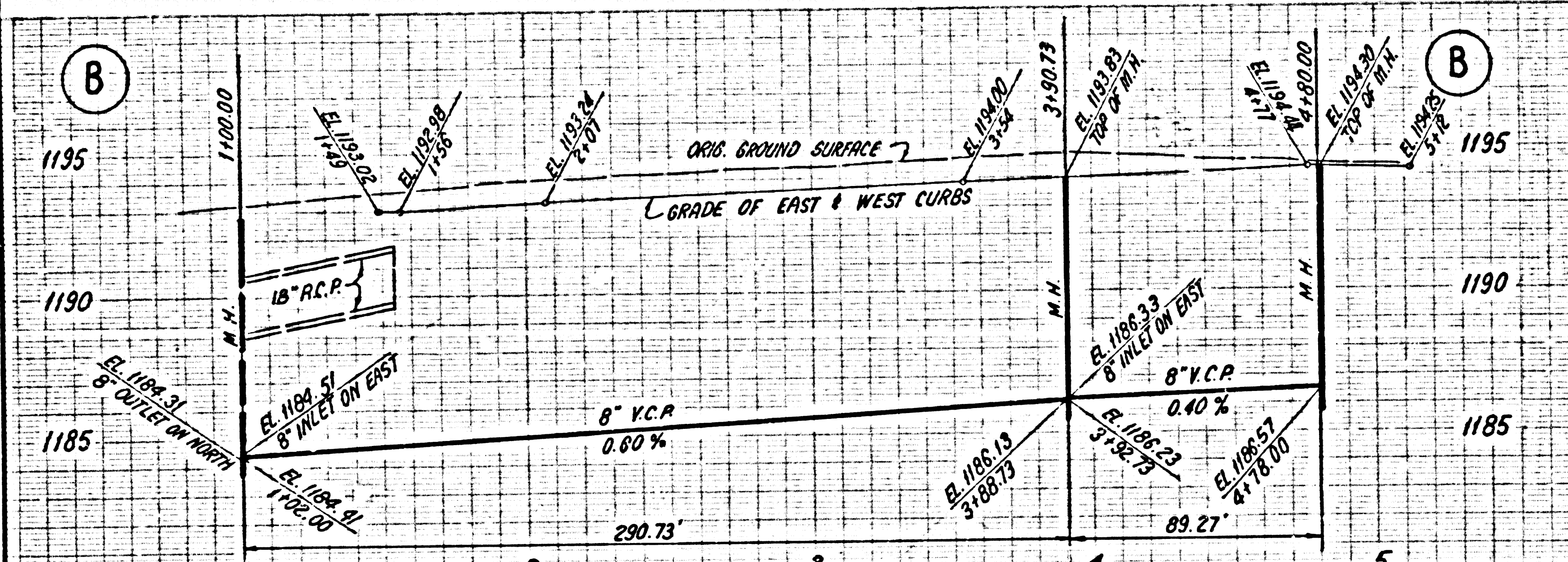
COUNTY OF LOS ANGELES, CALIFORNIA
 STEPHEN J. KOONCE, COUNTY ENGINEER WALTER E. GARRISON, CHIEF ENGINEER
 CO-ENGINEER NO. 32
 APPROVED: *Walter E. Garrison* 5/11/83
 CHECKED: *Ralph David Lent* 5/11/83
 REG. C.E. NO. 16883
 SANTA CLARITA BLDG. DIST. B. 2
 RETIRED BY THE L.A. CO. CIVIL SERVICE COMMISSION DATE 8-15-83



NO L.A. CO. CHARGE FOR CONNECTIONS
 SEE SAN. DISTRICTS FOR SPECIAL CONNECTION CHARGES

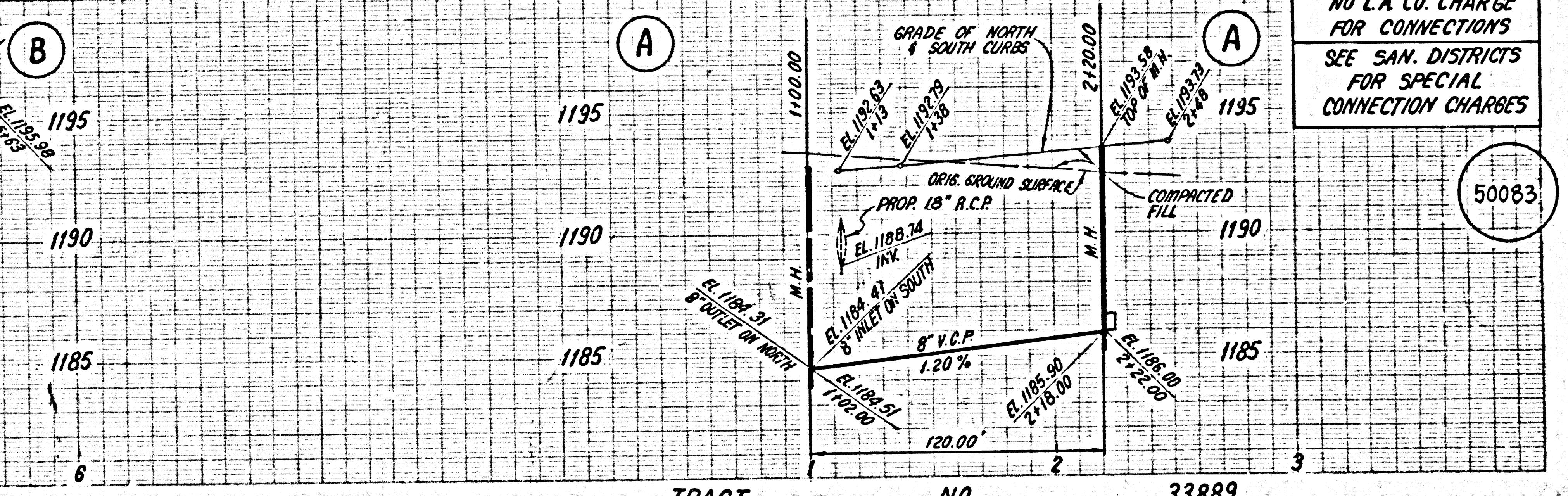
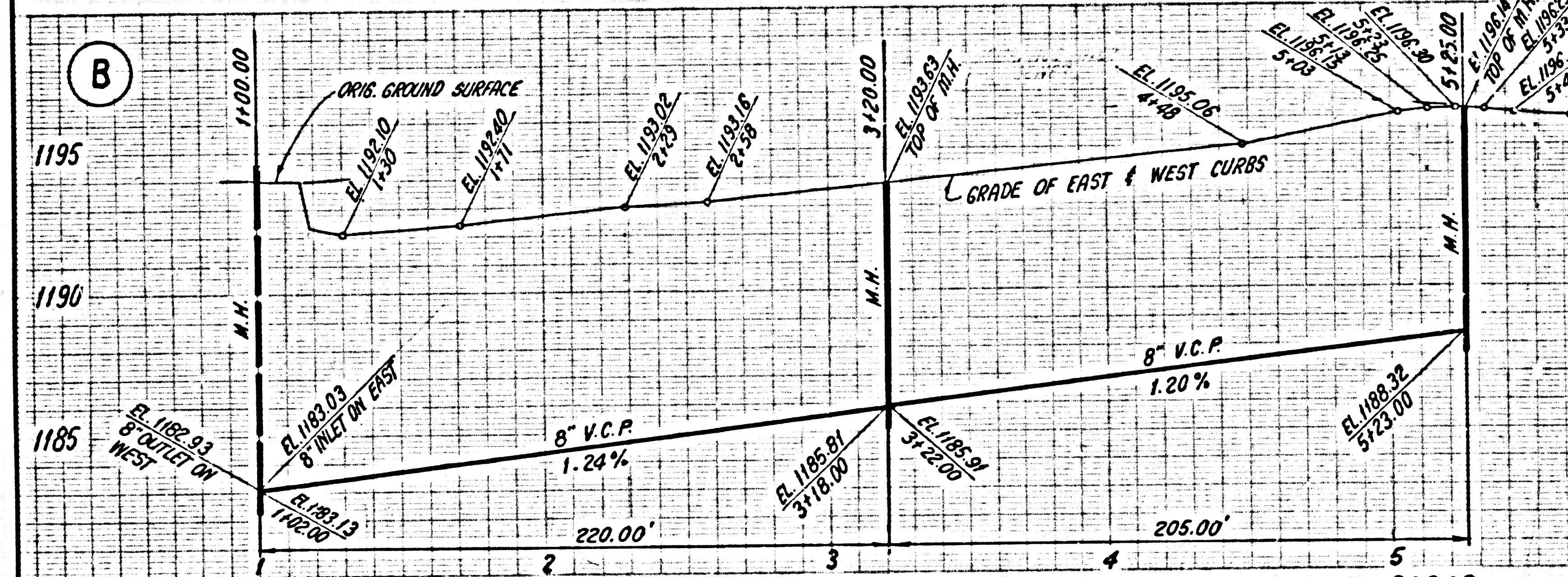
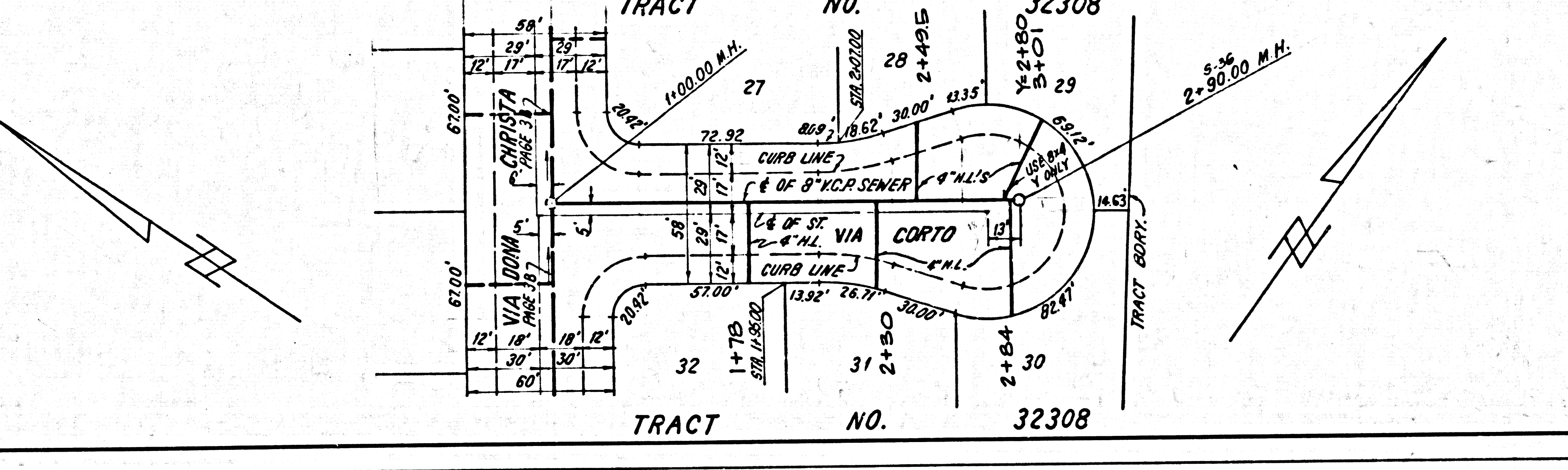
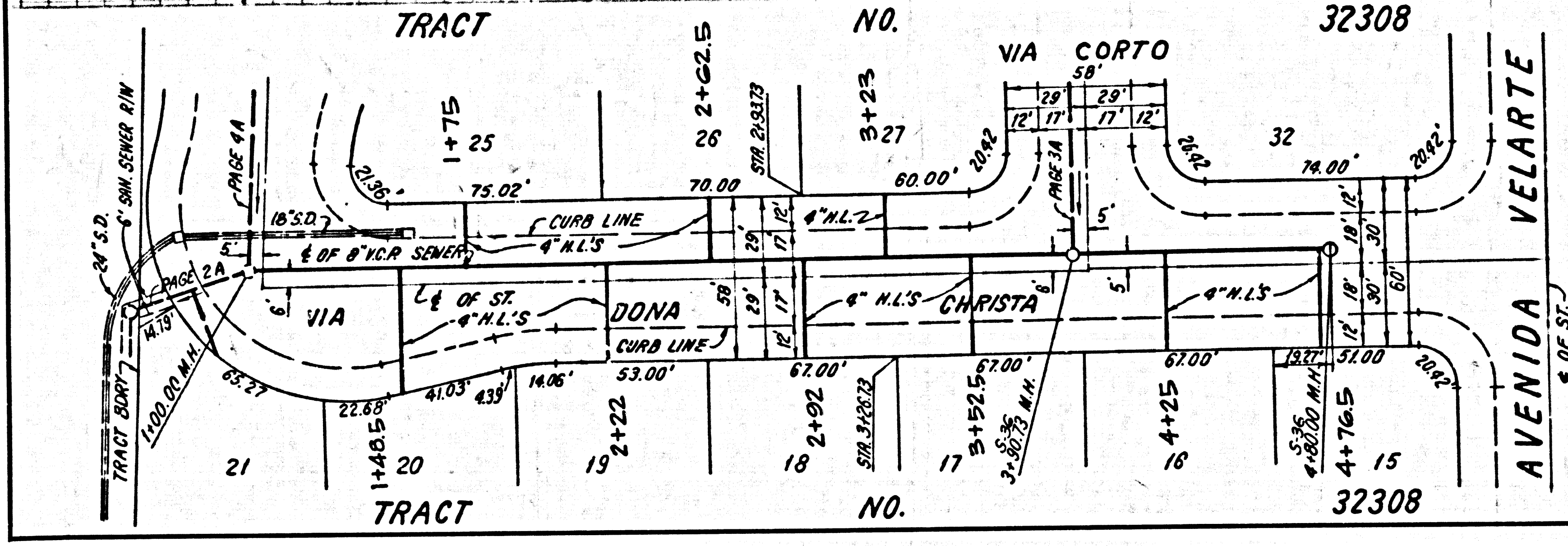
50061

TRACT NO. 32308 BC 10122



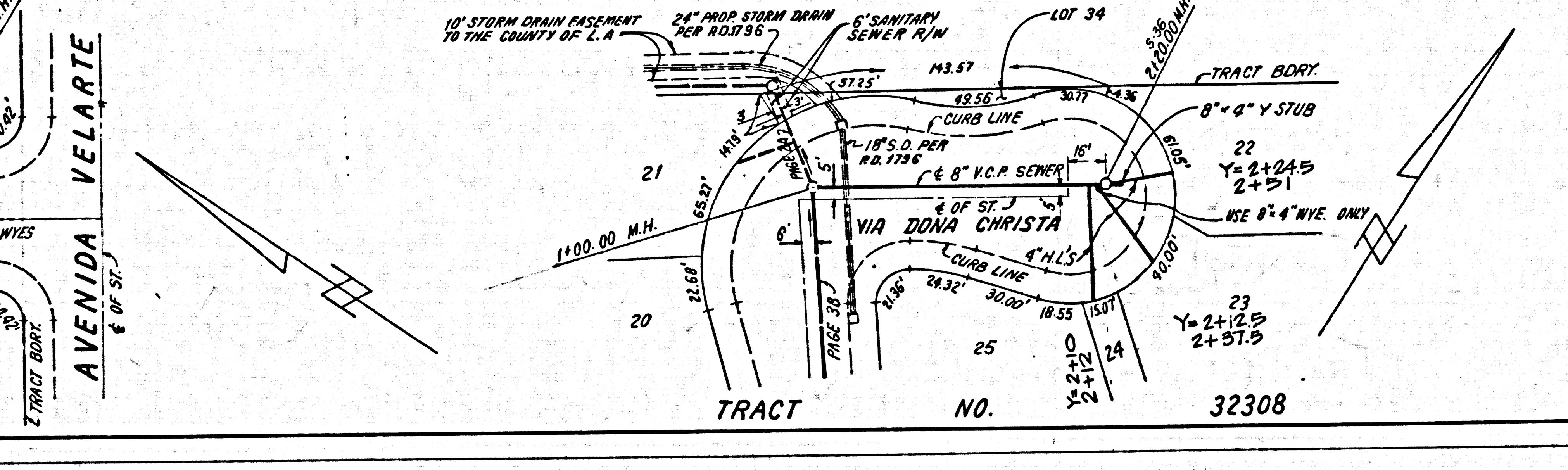
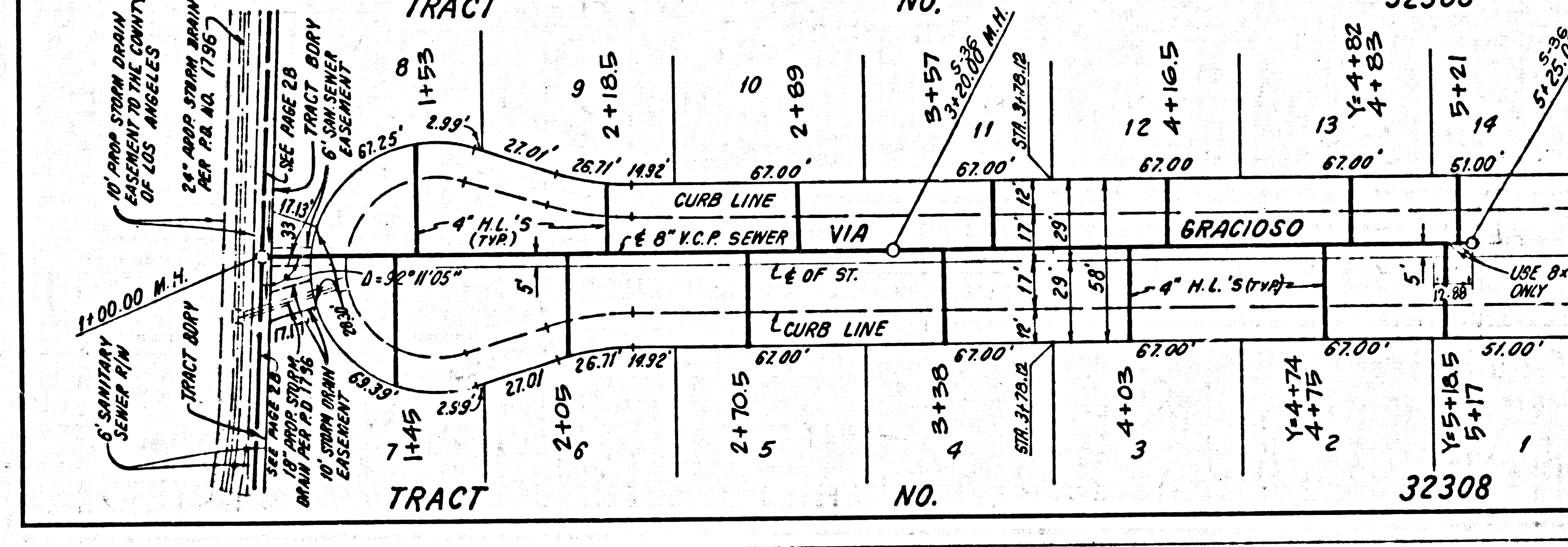
NO L.A. CO. CHARGE FOR CONNECTIONS
SEE SAN. DISTRICTS FOR SPECIAL CONNECTION CHARGES

50082



NO L.A. CO. CHARGE FOR CONNECTIONS
SEE SAN. DISTRICTS FOR SPECIAL CONNECTION CHARGES

50083



SHEET 9 OF 8053 ON TRACT 1