

SANITARY SEWERS

TO BE CONSTRUCTED IN

TRACT No 33256
PRIVATE CONTRACT NO. 10125

W.S. 35-A, 5
5 SHEETS, 100 PAGES

50750

SCALE: VERT. 1" = 5' HORIZ. 1" = 20'
FEBRUARY, 1983
PREPARED IN THE OFFICES OF
LIND & HILL, ENGINEERS
2200 ALHAMBRA DRIVE
ALHAMBRA, CALIF. 91801
BY: [Signature]
REG. C. E. No. 19233

LEGEND	5-1
MINIMUM PUBLIC SAFETY REQUIREMENTS	5-2
BACK MANHOLE	5-7
STANDARD MANHOLE STEP	5-7
BRIDGING FOR SEWER PIPE	5-7
CRADLING AND ENCASING	5-8
WYE ON THE SUPPORT	5-8
ALUMINUM FRENCH WYTHE	5-8
LOCKING MANHOLE FRAME AND COVER	5-8
NON-ARMORED PRECAST CONCRETE ALUMINUM	5-8
ENCASED PER A.S.C. 11-10.1	5-8
ANCHORAGE	5-24
CHIMNEY PIPE & BRASS	5-24

COUNTY OF LOS ANGELES, CALIFORNIA
STEPHEN J. KOONCE, COUNTY ENGINEER WALTER E. GARRISON, CHIEF ENGINEER
APPROVED: [Signature] 2/1/83 APPROVED: [Signature] 2/4/83
CHECKED: [Signature] 1/6/83
REG. C. E. NO. 16887 DATE
LA PUENTE BLDG. DIST. 200

GENERAL NOTES:

- ELEVATIONS ARE IN FEET ABOVE U.S.C. & G.S. MEAN LEVEL DATUM OF 1929.
- NO REVISIONS SHALL BE MADE IN THESE PLANS WITHOUT THE APPROVAL OF THE COUNTY ENGINEER.
- NO REPRESENTATIVE OF THE COUNTY ENGINEER WILL SURVEY OR LAY OUT ANY PORTION OF THE WORK.
- GRADES TO WHICH THIS IMPROVEMENT IS TO BE CONSTRUCTED ARE SHOWN ON PROFILES. GRADE POINTS FOR TOP OF CURBS, CENTER LINE OF STREETS, OR CENTER LINE OF ALLEYS ARE SHOWN BY CIRCLES ON PROFILES. AT ALL POINTS BETWEEN DESIGNATED POINTS THE GRADE SHALL BE ESTABLISHED SO AS TO CONFORM TO A STRAIGHT LINE DRAWN BETWEEN SAID DESIGNATED POINTS.
- THE PRIVATE ENGINEER SHALL FURNISH THE COUNTY ENGINEER WITH GRADE SHEETS AND STATIONING FOR ALL HOUSE LATERALS AND 1" ON 1" BRANCHES AND SHALL PROVIDE STAKES FOR THEM AT THEIR PROPER LOCATIONS WITH STATIONING PLAINLY MARKED. ALL HOUSE LATERALS SHALL BE CONSTRUCTED IN A STRAIGHT ALIGNMENT AT AN ANGLE OF LESS THAN 45° WITH THE MAIN LINE SEWER. ANY CHANGE IN ALIGNMENT SHALL BE REQUESTED IN WRITING BY THE PRIVATE ENGINEER.
- IF WORK IS TO BE DONE IN A STRAIGHT LINE FROM THE STATE OF CALIFORNIA, DIVISION OF HIGHWAYS, 330 SOUTH BRIDGE STREET, LOS ANGELES, CALIFORNIA.
- APPROVAL OF THIS PLAN BY THE COUNTY OF LOS ANGELES DOES NOT CONSTITUTE A REPRESENTATION AS TO THE ACCURACY OF THE LOCATION OF OR THE EXISTENCE OR NON-EXISTENCE OF ANY UNDERGROUND UTILITY PIPE, OR STRUCTURE WITHIN THE LIMITS OF THIS PROJECT. THIS NOTE APPLIES TO ALL PAGES.
- REFER TO SECTION 110.41 OF THE STANDARD SPECIFICATIONS, REGARDING SAFETY ORDERS.
- PRIOR TO THE RESUMPTION OF THE REQUIRED SEWER CONSTRUCTION PERMIT, THE CONTRACTOR SHALL OBTAIN AND FILE WITH THE COUNTY ENGINEER COPIES OF A PERMIT TO EXCAVATE IN COUNTY STREETS FROM THE LOS ANGELES COUNTY ROAD DEPARTMENT, COUNTY ENGINEER OFFICE, 1100 N. GARDEN STREET, LOS ANGELES, CALIFORNIA, AND A CERTIFICATE OF LIABILITY INSURANCE WITH THE DEPARTMENT OF COUNTY ENGINEER, 800 SOUTH VERMONT, R.M. 60, LOS ANGELES, CALIFORNIA 90008, NAMED AS THE CERTIFICATE HOLDER TO BE NOTIFIED 30 DAYS PRIOR TO CANCELLATION OF POLICY.

CONSTRUCTION NOTES:

- WORK SHALL BE CONSTRUCTED ACCORDING TO THE STANDARD SPECIFICATIONS FOR PUBLIC WORKS CONSTRUCTION (1982 EDITION) BY THE COUNTY ENGINEER AND COUNTY ENGINEER SPECIAL PROVISIONS FOR THE CONSTRUCTION OF SANITARY SEWERS DATED 12/1/79. THIS SHALL BE PROSECUTED ONLY IN THE PRESENCE OF THE COUNTY ENGINEER.
- THE CONTRACTOR SHALL NOTIFY THE ENVIRONMENTAL DEVELOPMENT DIVISION BY TELEPHONE, 726-2108, AT LEAST TWENTY-FOUR HOURS BEFORE STARTING ANY WORK UNDER THIS CONTRACT.
- HOUSE LATERALS TO BE CONSTRUCTED WITH INVERTS AT PROPERTY LINE 8 FEET BELOW CURB GRADE EXCEPT AS NOTED.
- WYE ON THE SUPPORT MAY BE USED FOR CONNECTIONS TO MAINLINE SEWERS EXCEPT AS NOTED.
- ALL STRUCTURES SHALL BE EITHER BRICK MANHOLES PER S-3 OR PRECAST CONCRETE MANHOLES PER S-36, EXCEPT AS NOTED.
- PROVIDE STAKES ON THE PROPERTY LINE OR PROPERTY LINES PRODUCED AT RIGHT ANGLES TO THE SEWER LINE AT THE CENTER LINE OF EACH MANHOLE.
- MANHOLE TOPS IN UNIMPROVED RIGHTS OF WAY TO BE SIX INCHES ABOVE FINISHED GRADE.
- WYTHES ON CLAY PIPE JOINTS SHALL BE TYPE "O" OR "N" PER STANDARD SPECIFICATIONS SECTION 308-2.
- IF A POWER POLE IS WITHIN THREE FEET OF THE SEWER, THE SEWER SHALL BE ENCASED PER S-25, CASE II, TWO FEET ON EACH SIDE FROM THE POINT OF INTERFERENCE.
- IF DURING THE COURSE OF CONSTRUCTION IT IS DETERMINED THAT THERE IS LESS THAN FOUR FEET OF COVER OVER THE TOP OF A MAIN LINE OR HOUSE LATERAL SEWER WHICH IS NOT INDICATED ON THE PLAN, THE PIPE SHALL BE ENCASED PER S-25, CASE I, UNLESS OTHERWISE APPROVED BY THE COUNTY ENGINEER.
- ALL JOINTS BETWEEN CAST IRON PIPE AND WYTHES CLAY PIPE SHALL BE MADE WITH A RUBBER SLEEVE JOINT, TYPE "O" OR "N", WITH RUBBERING IF NECESSARY TO SEAL THE JOINT TO THE GRADE WITH APPROVED JOINTING MATERIAL.
- ALL JOINTS BETWEEN CAST IRON PIPE AND WYTHES CLAY PIPE SHALL BE MADE WITH APPROVED JOINTING MATERIAL.
- SEWERS TO BE TESTED FOR LEAKS IN ACCORDANCE WITH THE STANDARD SPECIFICATIONS AND SPECIAL PROVISIONS.
- RESURFACE ALL TRENCHES WITHIN PAVED AREAS TO MEET L.A. COUNTY ROAD DEPT. OR CALIFORNIA STATE HIGHWAY REQUIREMENTS IN ACCORDANCE WITH PERMITS.
- FULL COMPLIANCE WITH SECTION 308-1.5.3 OF THE SPECIAL PROVISIONS WILL BE REQUIRED FOR BACKFILL IN STREETS. CERTIFICATION OF BACKFILL COMPACTION AND SAND COUNTERSINTE BY A QUALIFIED, REGISTERED TESTING LABORATORY SHALL BE PROVIDED BY THE CONTRACTOR PRIOR TO THE RESUMPTION OF THE REMAINDER OF A CERTIFICATE OF PARTIAL ACCEPTANCE.
- SPECIAL BACKFILL IN EMBANKMENT CONSTRUCTION: (A) BACKFILL TRENCH AND REFACE OTHER EARTH SO AS TO ACHIEVE THE NATURAL OR FINISHED GRADES AND SLOPES SHOWN ON THE GRADING PLAN APPROVED FOR THIS DEVELOPMENT BY THE BUILDING AND SAFETY DIVISION; (B) ALL BACKFILL AND TRENCH REFACE SHALL BE COMPACTED TO A MINIMUM OF 90% OF MAXIMUM DENSITY PER A.S.T.M. STD. METHOD OF TEST D998 BY AS MODIFIED. ACCEPTABLE CERTIFICATION OF SUCH COMPACTION SHALL BE SUBMITTED TO THE ENVIRONMENTAL DEVELOPMENT DIVISION.

PRIVATE ENGINEERS NOTICE TO CONTRACTORS

The existence and location of any underground utility pipes or structures shown on these plans are obtained by search of the available records to the best of our knowledge and are not to existing utilities except as shown on these plans. The contractor is required to take due precautionary measures to protect the utility lines shown and any other lines not of record or not shown on these plans.

REVISION #2
APPROVED BY: [Signature]
L.A. COUNTY ENGINEER
DATE: 7-27-82

REVISION #3
APPROVED BY: [Signature]
L.A. COUNTY ENGINEER
DATE: 7-27-82

REVISION #4
APPROVED BY: [Signature]
L.A. COUNTY ENGINEER
DATE: 8/23/82

REVISION #1
APPROVED BY: [Signature]
L.A. COUNTY ENGINEER
DATE: 12-28-83

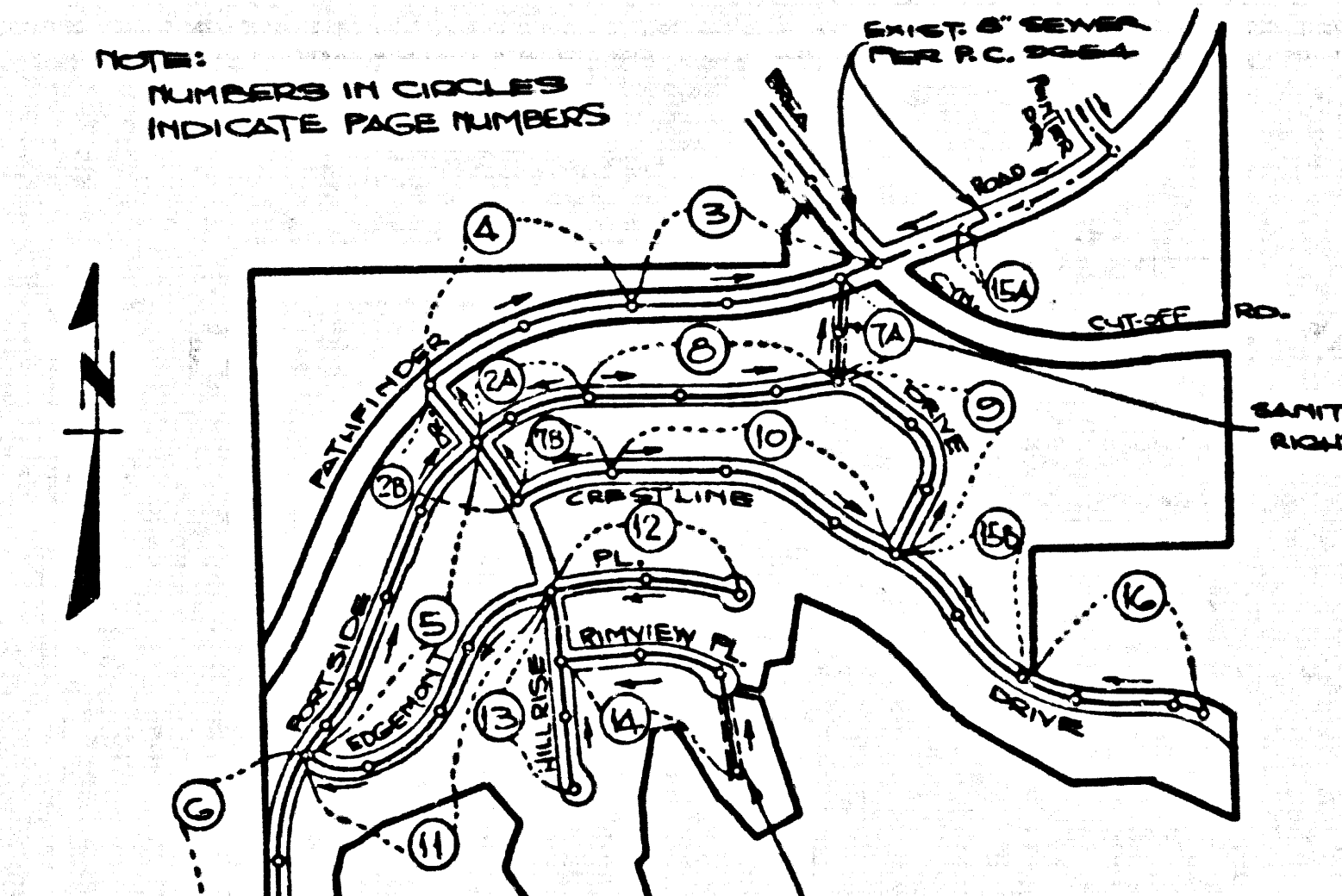
CONSTRUCTION NOTES CONT'D.

- FULL COMPLIANCE WITH PART IX OF THE SPECIAL PROVISIONS IS REQUIRED FOR THE INSTALLATION OF A.S.S. CONCRETE PIPES.
- WHILE WATER STOP GASKETS & CLAMPS ARE REQUIRED FOR THE CONNECTION OF A.S.S. COMPOSITE PIPE TO MANHOLE STRUCTURES.
- A.S.S. SOLID WALL PIPE MUST BE USED FOR WYE & HOUSE LATERAL CONNECTIONS TO A.S.S. COMPOSITE MAINLINE SEWER PIPES.
- A.S.S. COMPOSITE PIPE SHALL BE BEDDED IN ACCORDANCE WITH THE TABLE IN SECTION 6-3.1 OF PART IX OF THE SPECIAL PROVISIONS.
- PIPE DEFLECTION FITTINGS ARE REQUIRED FOR RADII OF CURVATURE LESS THAN 200 FEET WHEN USING OF A.S.S.C.P.
- NO CONNECTIONS FOR DISPOSAL OF INDUSTRIAL WASTE IS TO BE MADE TO A.S.S. COMPOSITE PIPE IS USED.

NOTE: ISSUE NO HOUSE CONNECTION PERMITS UNTIL R.C.'S 9652 & 9654 ARE ACCEPTED.

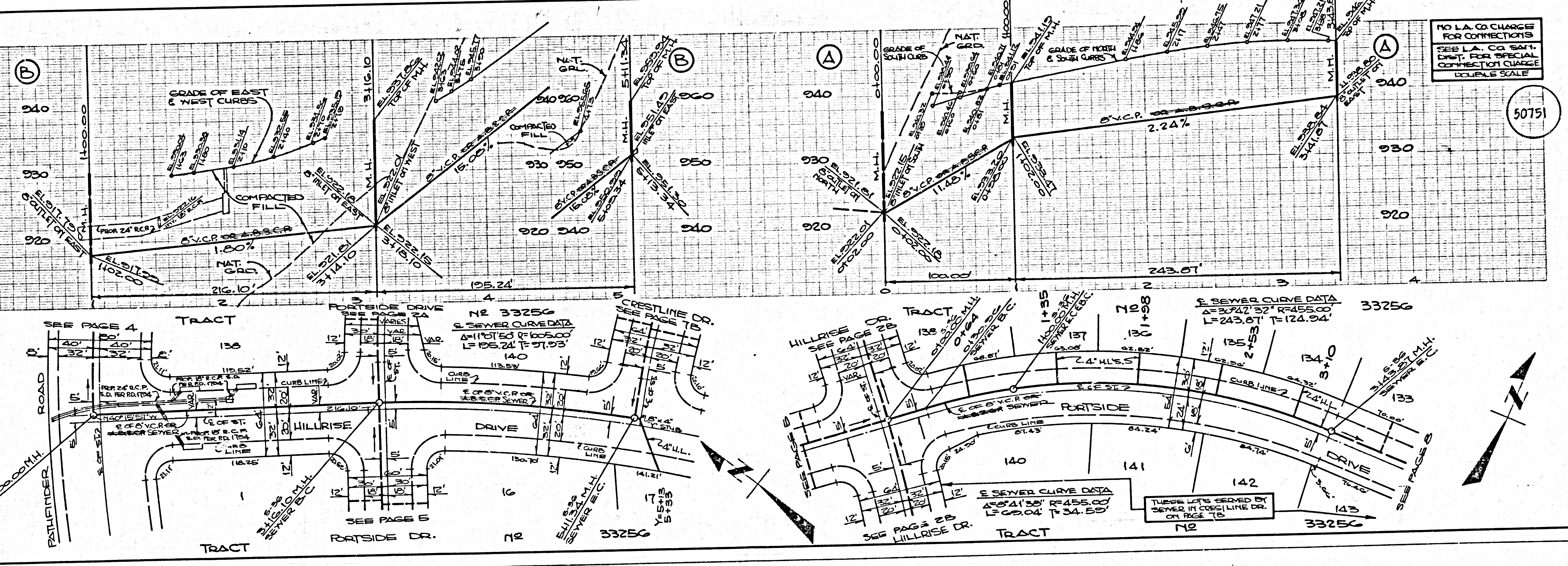
B.M. CG 1020 ELEV. 512.336
ST. SPK. IN CONC. HDWL. 15 FT. N. OF BREA CYN. CUT-OFF RD. 40.65 FT. FROM SUMMIT MKD. (B.M. 5) OTTERBEIN QUAD. 191E

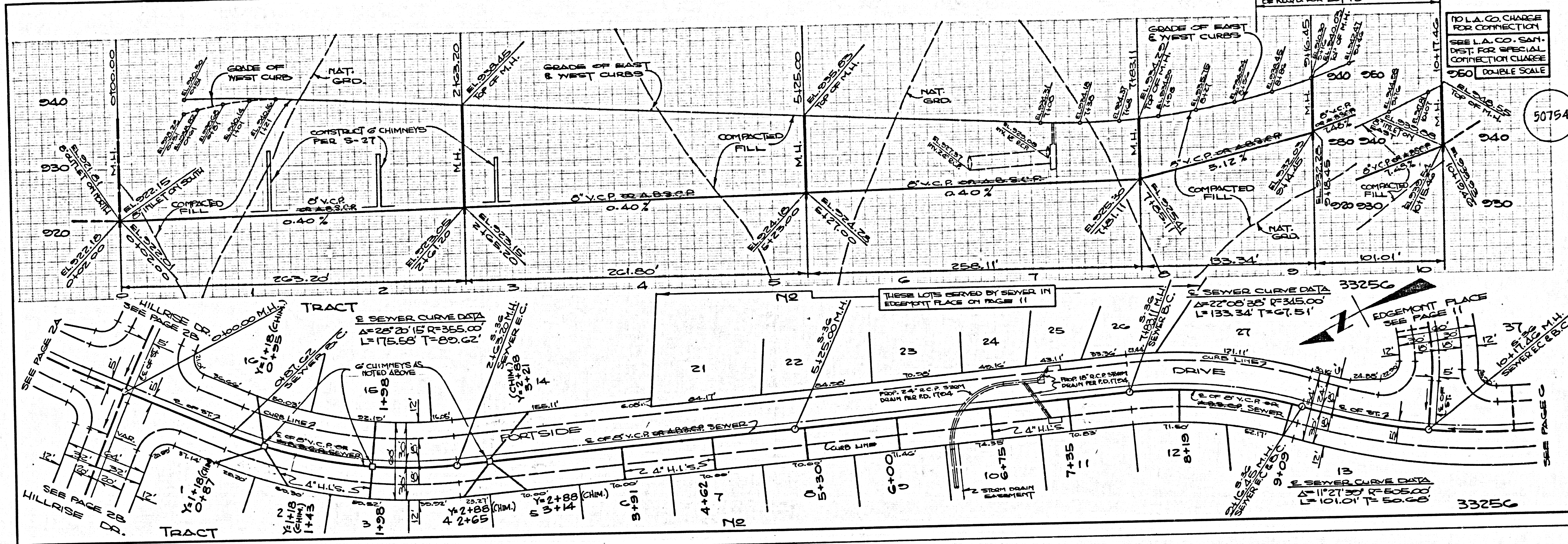
PAGE 14
REVISE HORIZONTAL ALIGNMENT FROM STA. 6120.05 TO 6120.04



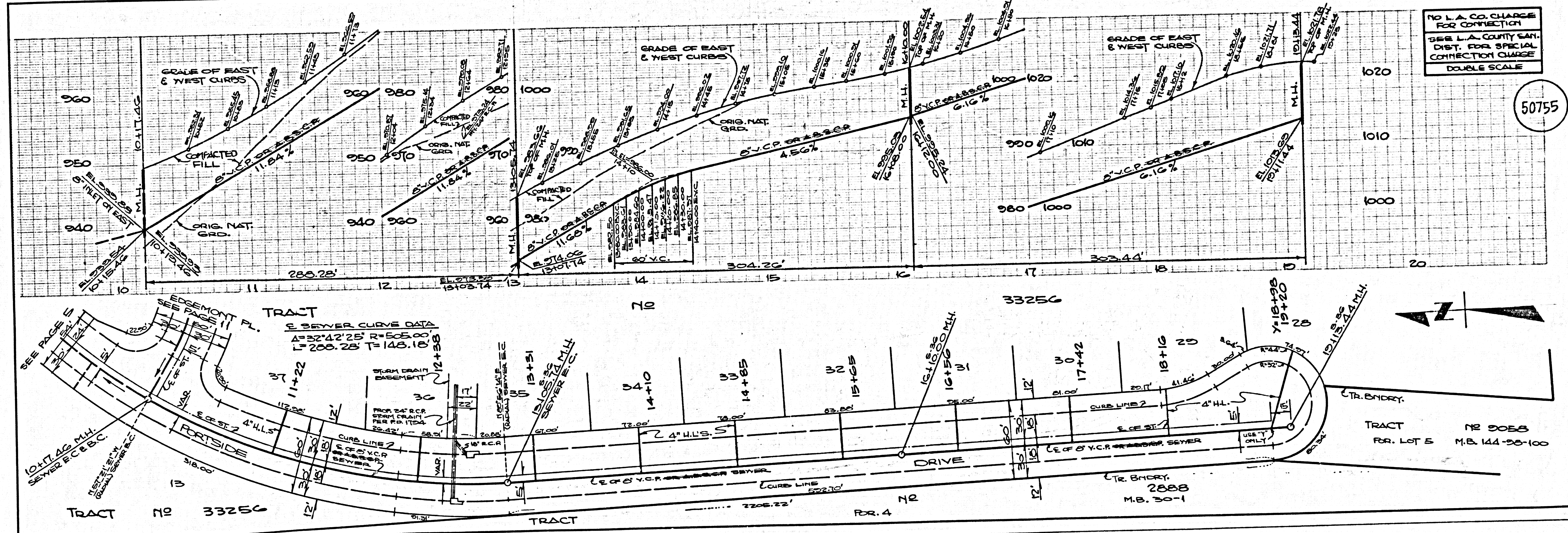
REVISION #2
APPROVED BY: [Signature]
L.A. COUNTY ENGINEER
DATE: 3/23/84

REVISION #1
APPROVED BY: [Signature]
L.A. COUNTY ENGINEER
DATE: 12-28-83

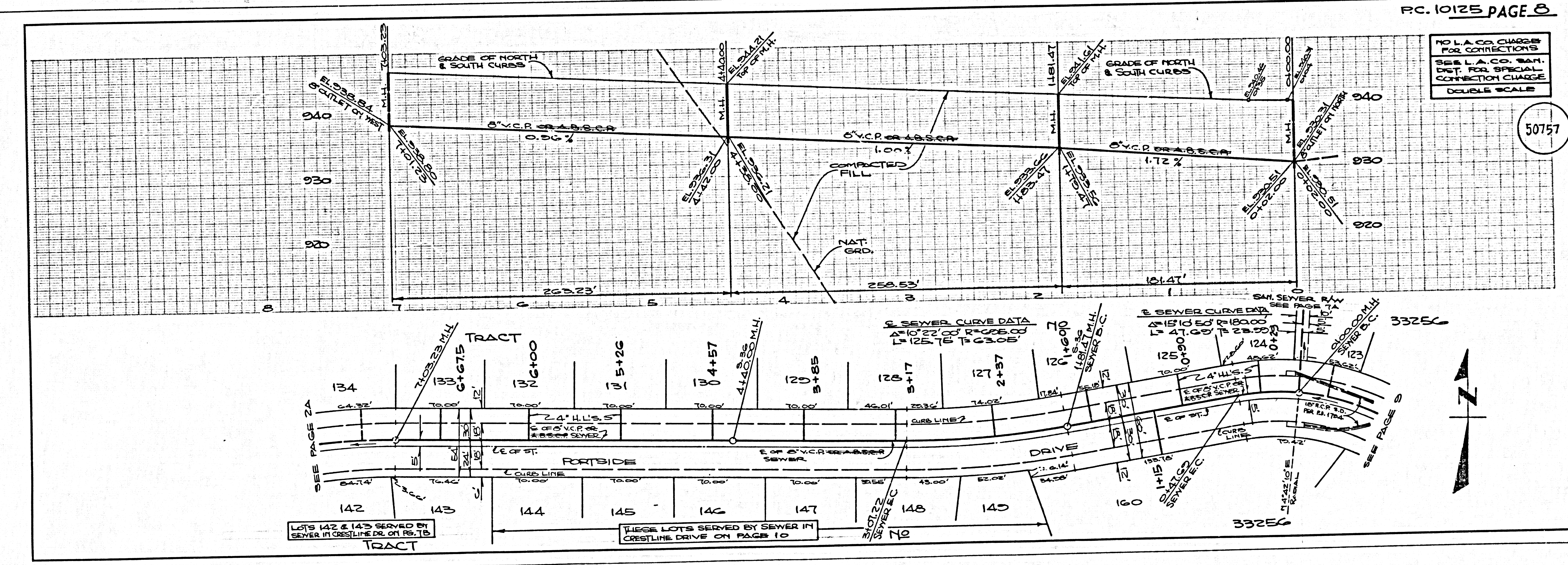
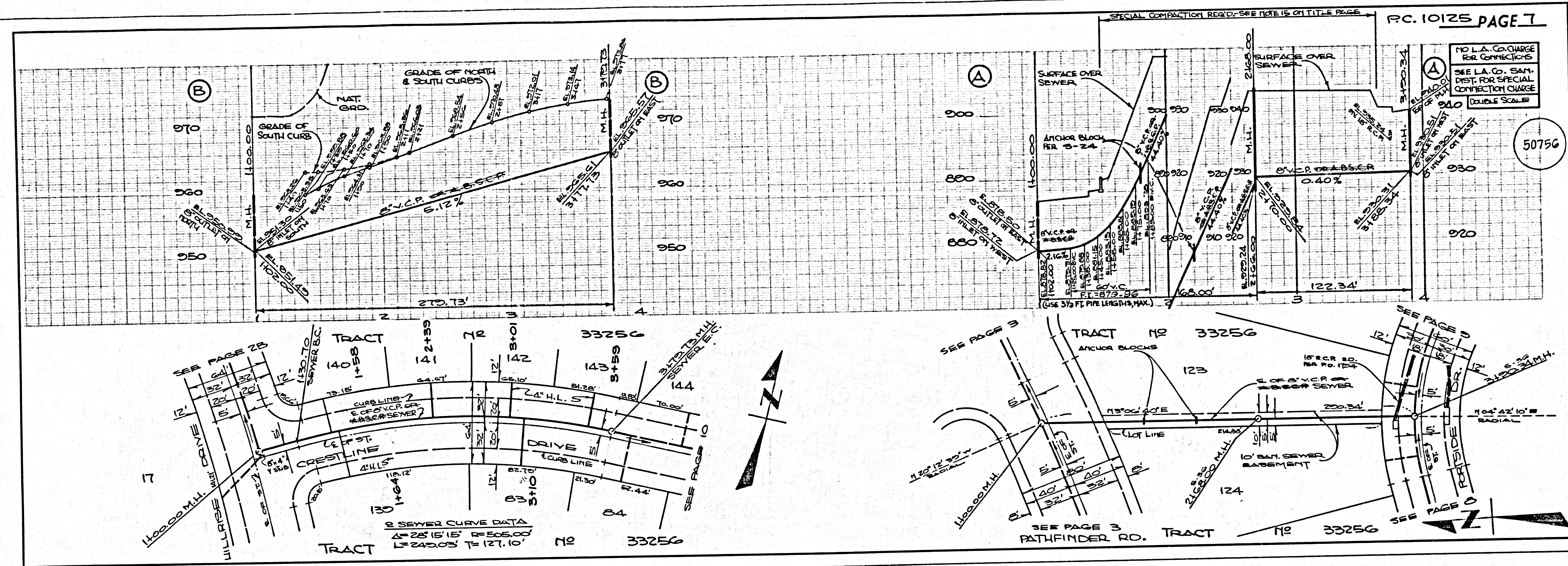


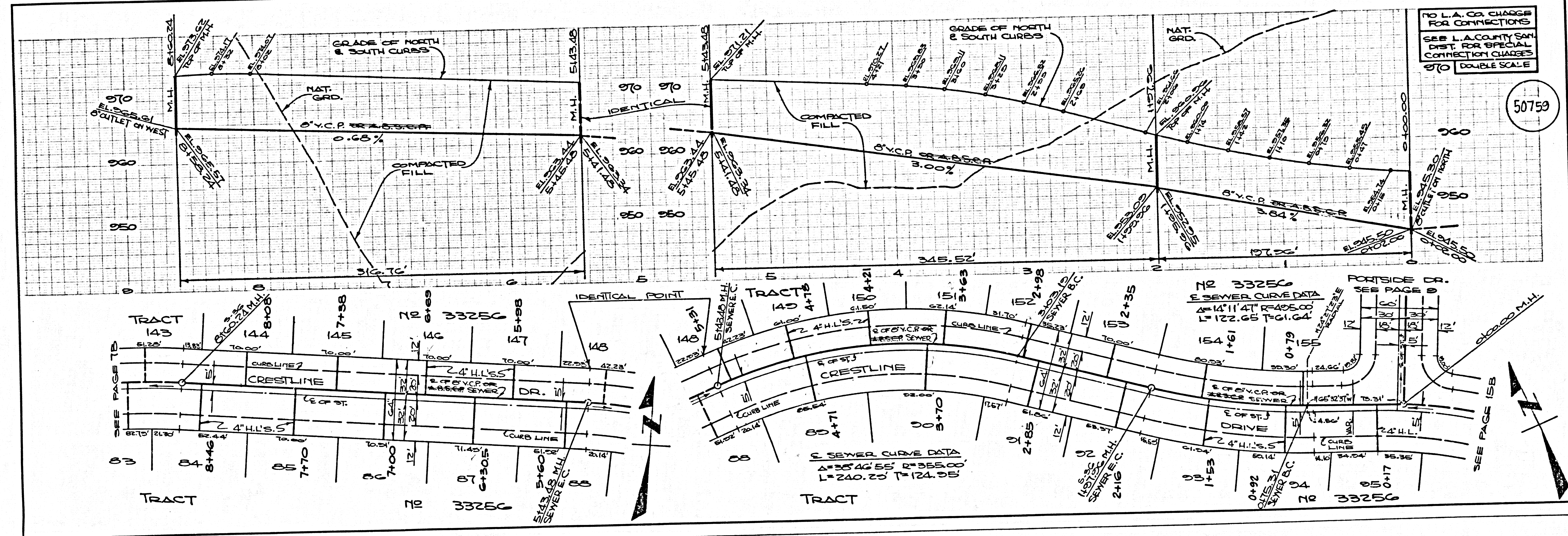
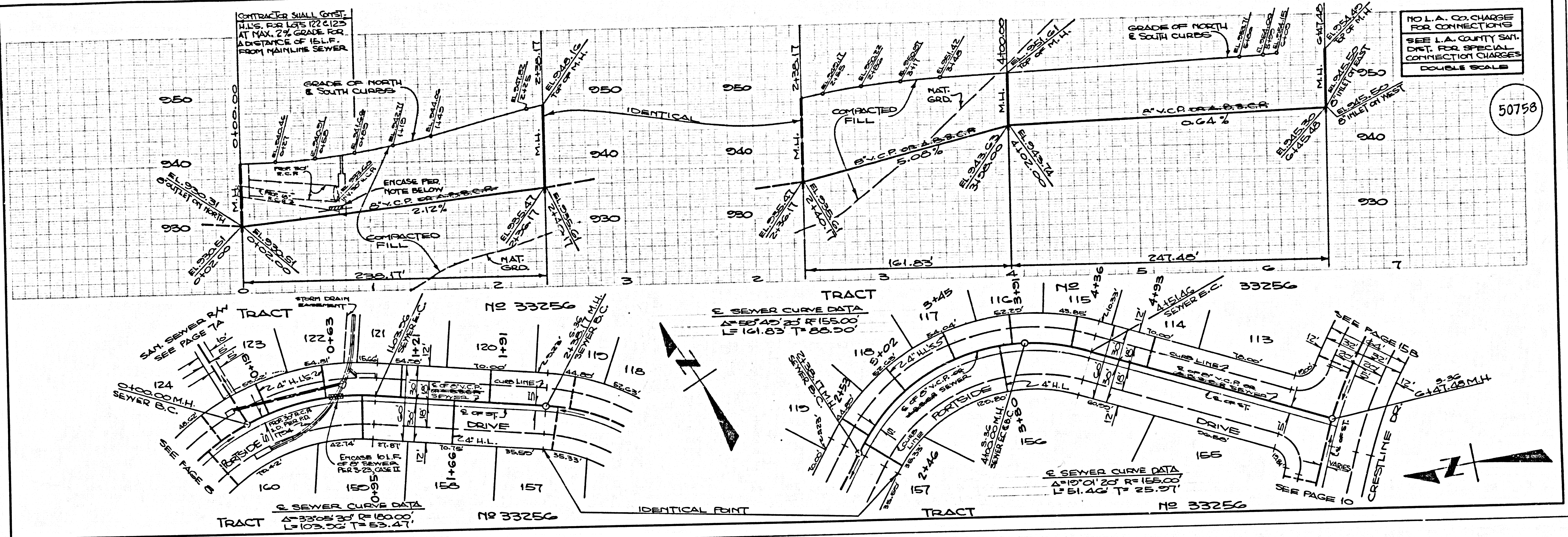


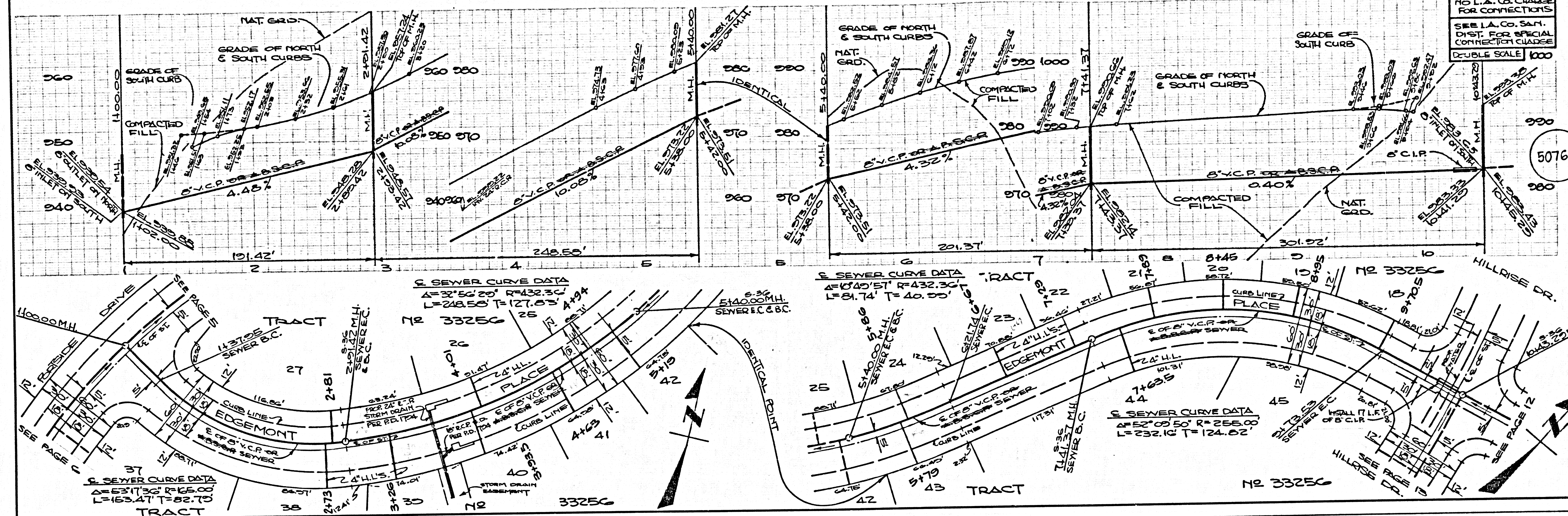
PC. 10125



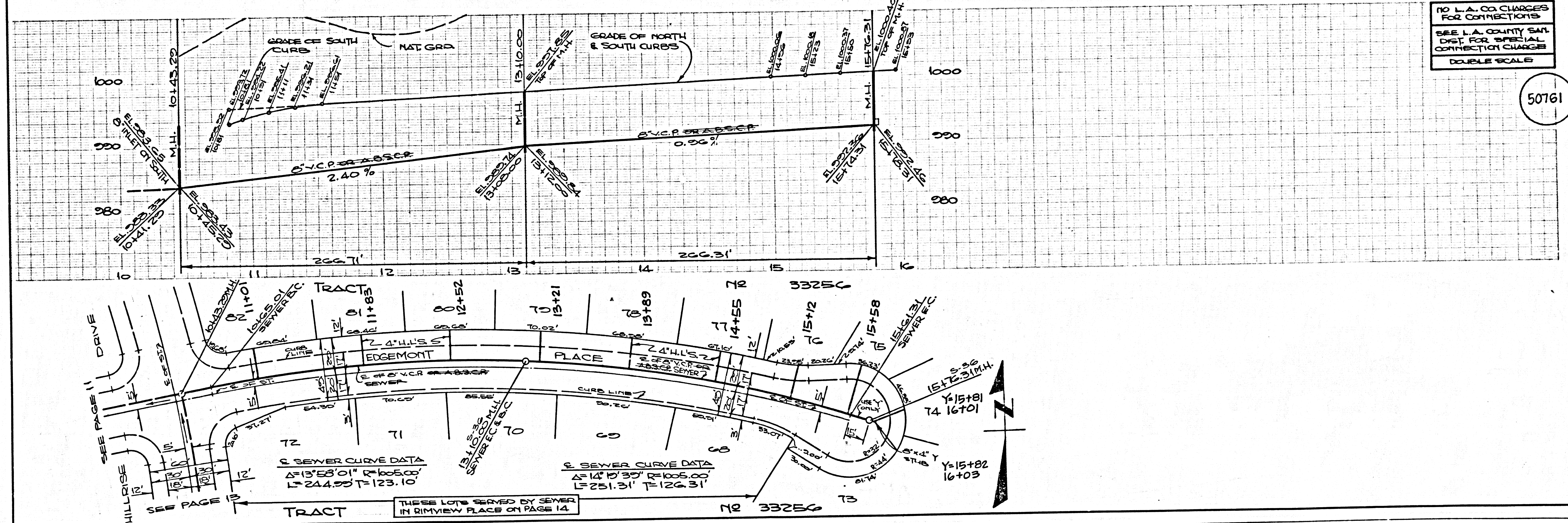
PC. 10125







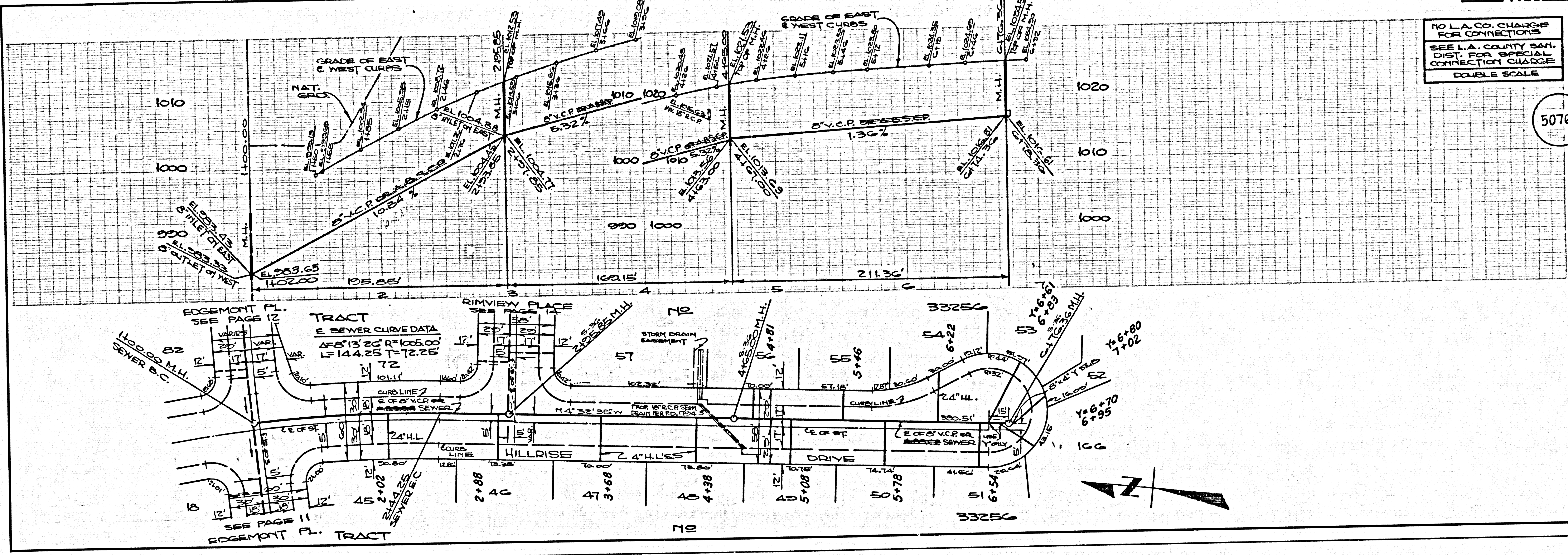
EC 1015E



BASED ON TRACT

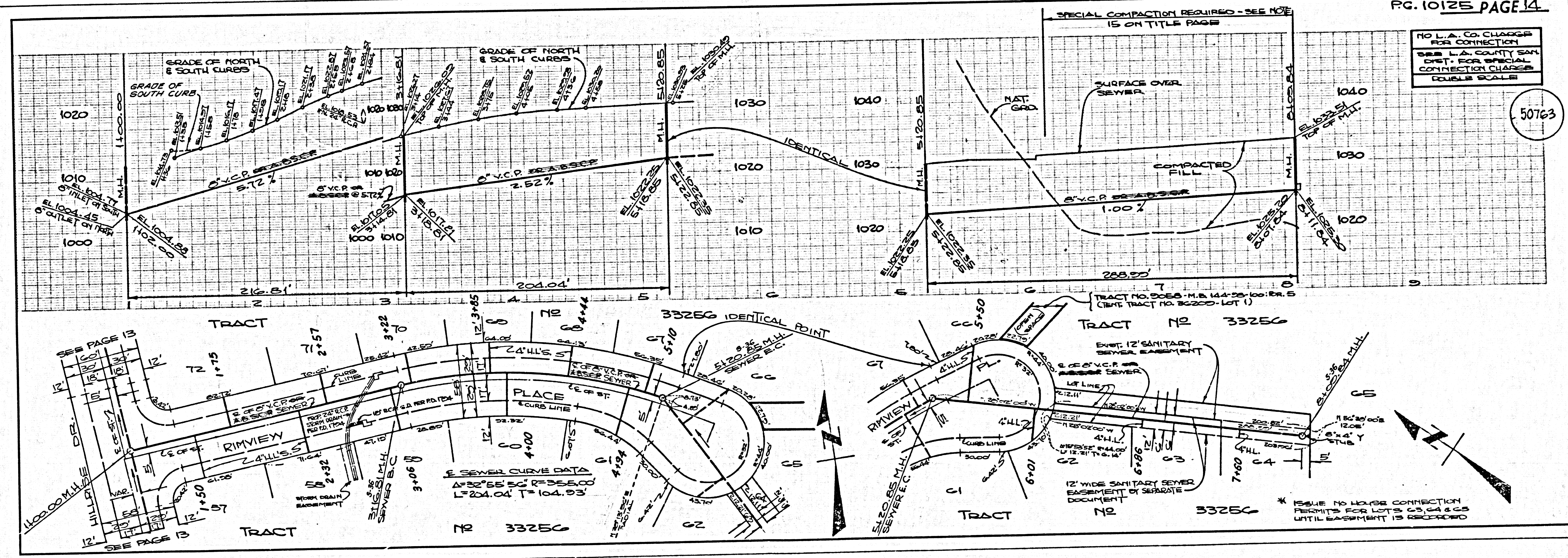
NO L.A. CO. CHARGE FOR CONNECTIONS
SEE L.A. COUNTY SAN. DIST. FOR SPECIAL CONNECTION CHARGE
DOUBLE SCALE

50762



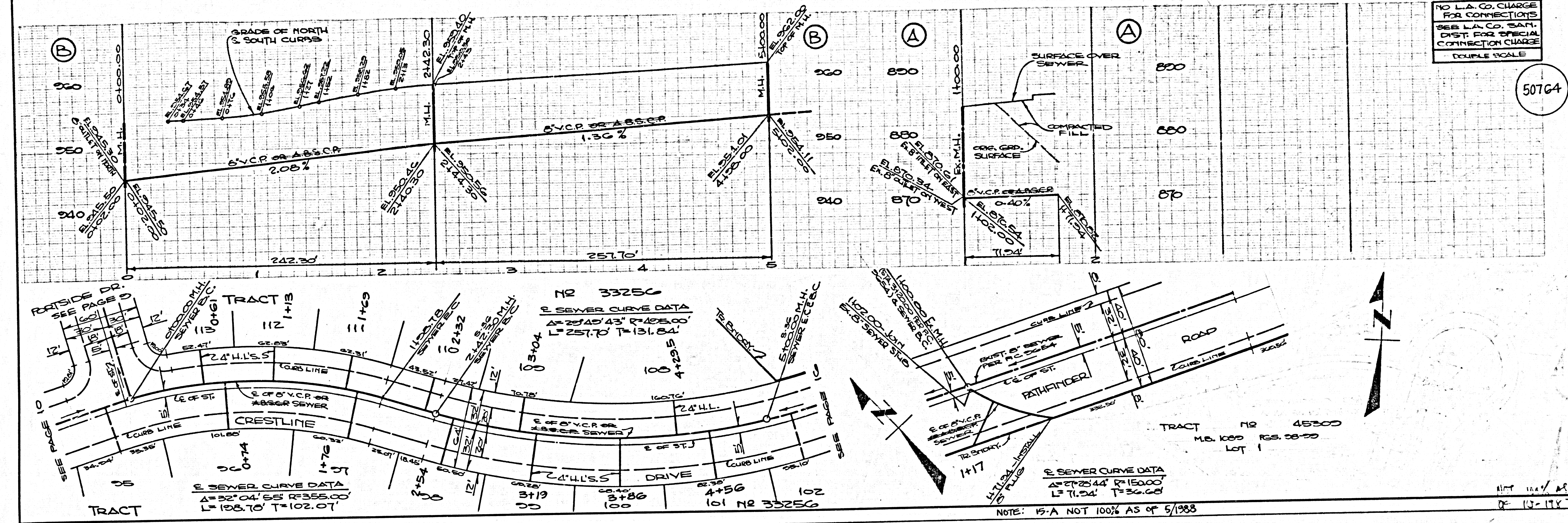
NO L.A. CO. CHARGE FOR CONNECTIONS
SEE L.A. COUNTY SAN. DIST. FOR SPECIAL CONNECTION CHARGE
DOUBLE SCALE

50763



NO L.A. CO. CHARGE FOR CONNECTIONS SEE L.A. CO. SAN. DIST. FOR SPECIAL CONNECTION CHARGE DOUBLE SCALE

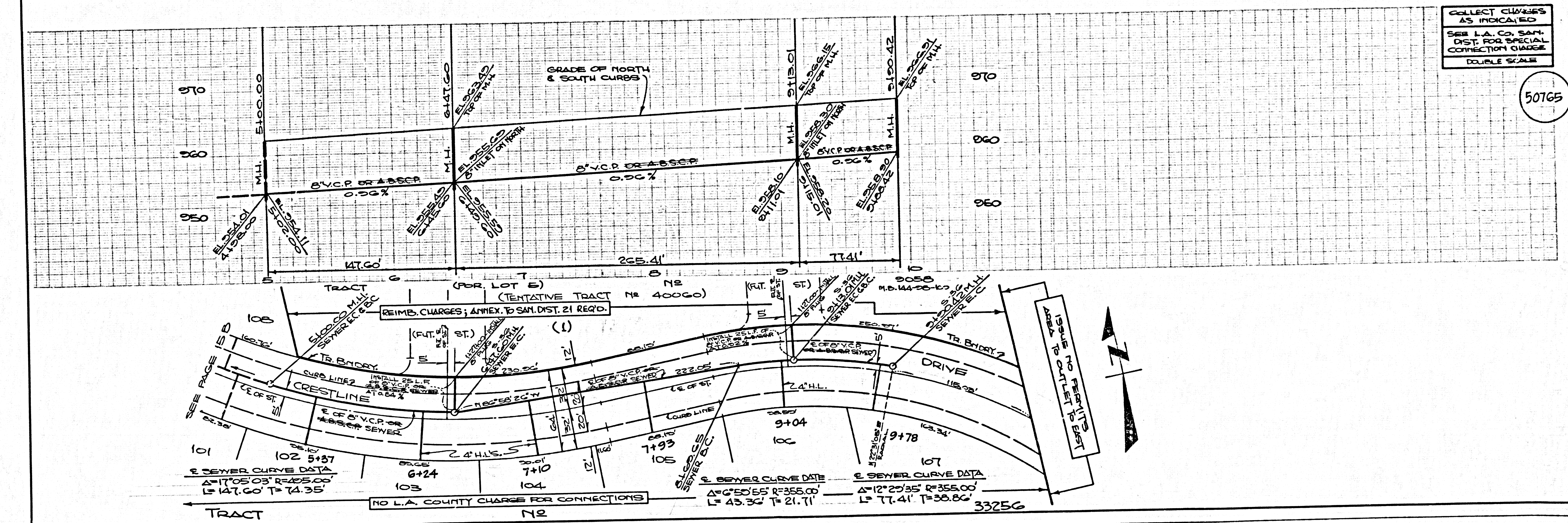
50764



PC. 10125

COLLECT CHARGES AS INDICATED SEE L.A. CO. SAN. DIST. FOR SPECIAL CONNECTION CHARGE DOUBLE SCALE

50765



PC. 10125