

SANITARY SEWERS

TO BE CONSTRUCTED IN

TRACT NO. 42584
PRIVATE CONTRACT NO. 10134

W.S. 33-D-2
3 SHEETS, 6 PAGES

50695

SCALE: HORIZ. 1" = 40' VERT. 1" = 4'

MARCH, 1983
PREPARED IN THE OFFICES OF
LIND & HILLERUD, INC.
3000 HUNTINGTON DRIVE
SAN MARINO, CA 91088

REG. C. E. No. 12333

THE FOLLOWING LATEST REVISED STANDARD PLANS ON FILE IN THE OFFICE OF THE COUNTY ENGINEER SHALL APPLY IN THE CONSTRUCTION OF THIS PROJECT:

| | |
|---|-------|
| SECTION | DATE |
| MINIMUM PUBLIC SAFETY MEASUREMENTS | 5-2 |
| BACK MANHOLES | 5-2 |
| STANDARD MANHOLE SET | 5-17 |
| MANHOLES FOR SEWER PIPE | 5-17 |
| CHANGING AND DISASSEMBLING | 5-23 |
| WYE OR TEE SUPPORT | 5-23 |
| ALLOWABLE TRENCH WIDTH | 5-23 |
| LOCKING MANHOLES PLUMB AND COVER | 5-23 |
| NON-IMPEDICER PRECAST CONCRETE MANHOLE | 5-23 |
| OLD-DRAIN REQUIREMENTS FOR PLASTIC PIPE | 5-2/A |
| SPECIAL HOUSE LATERALS | 5-2/B |

COUNTY OF LOS ANGELES, CALIFORNIA
STEPHEN J. KOONCE, COUNTY ENGINEER
WALTER E. GARRISON, CHIEF ENGINEER
APPROVED: *Ann H. Miller*
SAN DIMAS REGIONAL ENGINEER

CHECKED: *Ralph David*
DATE: 1-8-83
SAN DIMAS BLDG. DIST. 10-02

PRIVATE ENGINEERS NOTICE TO CONTRACTORS

The existence and location of any underground utility pipes or structures shown on these plans are obtained by search of the available records. To the best of our knowledge there are no existing utilities except as shown on these plans. The contractor is required to take due precautionary measures to protect the utility lines shown and any other lines not of record or not shown on these plans.

Registered Engineer R.C.E. 19233

| | | |
|---------|---|--|
| PAGE 2A | CHANGE SEWER DRAIN TO 42" & ADD ENL. CONNECTION AT STA. 1+13.5 | APPROVED BY: <i>Samuel H. Hillerud</i> |
| PAGE 2B | CHANGE SEWER DRAIN TO 42" & ADD ENL. CONNECTION AT STA. 4+15 | L.A. COUNTY ENGINEER |
| PAGE 3 | ADD 42" SEWER DRAIN, REVISE CONNECTION OF H.L.S. & ADD GRADING FROM STA. 4+30.76 TO 5+13.04 | DATE: 12-02-84 |
| PAGE 4B | REVISE 42" SEWER DRAIN ALIGNMENT | |

CONSTRUCTION NOTES CONT'D.

- FULL COMPLIANCE WITH PART 21 OF THE SPECIAL PROVISIONS IS REQUIRED FOR THE INSTALLATION OF A.B.S. COMPOSITE PIPE.
- MANHOLE WATER STOP GASKETS & CLAMPS ARE REQUIRED FOR THE CONNECTION OF A.B.S. COMPOSITE PIPE TO MASONRY STRUCTURES.
- A.B.S. SOLID WALL PIPE MUST BE USED FOR WYE & HOUSE LATERAL CONNECTIONS TO A.B.S. COMPOSITE MANHOLE SEWER PIPE.
- A.B.S. COMPOSITE PIPE SHALL BE BEDDED IN CONFORMANCE WITH THE TABLE IN SECTION 3-1.1 OF PART 21 OF THE SPECIAL PROVISIONS.
- PIPE DEFLECTION FITTINGS ARE REQUIRED FOR RADIUS OF CURVATURE LESS THAN 350 FEET WITH USUALLY 4" A.B.S. C.P.
- NO CONNECTIONS FOR DISPOSAL OF INDUSTRIAL WASTE IS ALLOWED IF A.B.S. COMPOSITE PIPE IS USED.
- SEWER LINE CURVATURE SHALL NOT BE ACHIEVED BY PULLING OF JOINTS OR OVERLAP PIPE JOINTS WHEN USING PLASTIC PIPE INCLUDING A.B.S. COMPOSITE PIPE.
- (125) INDICATES ALL NOT TO BE CONSTRUCTED UPSTREAM OF THIS STATION.
- NO CONNECTION FOR THE DISPOSAL OF INDUSTRIAL WASTES SHALL BE MADE TO SEWERS SHOWN ON THESE DRAWINGS UNTIL A PERMIT FOR INDUSTRIAL WASTEWATER DISCHARGE HAS BEEN ISSUED BY THE SANITATION DISTRICT FOR SAID CONNECTION.

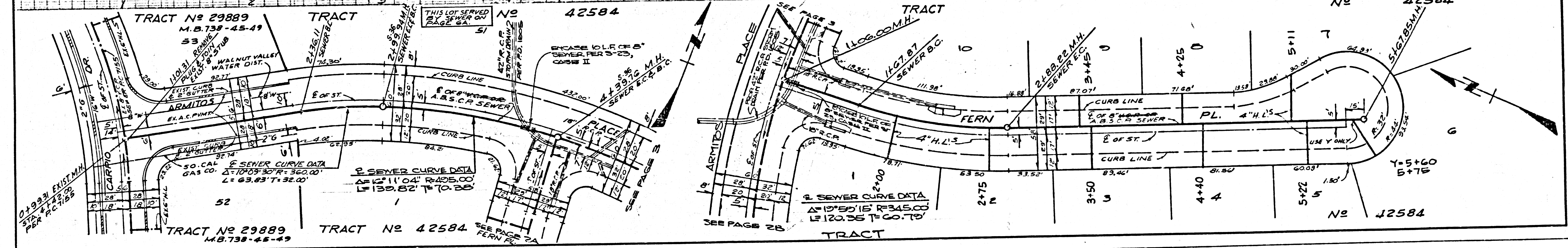
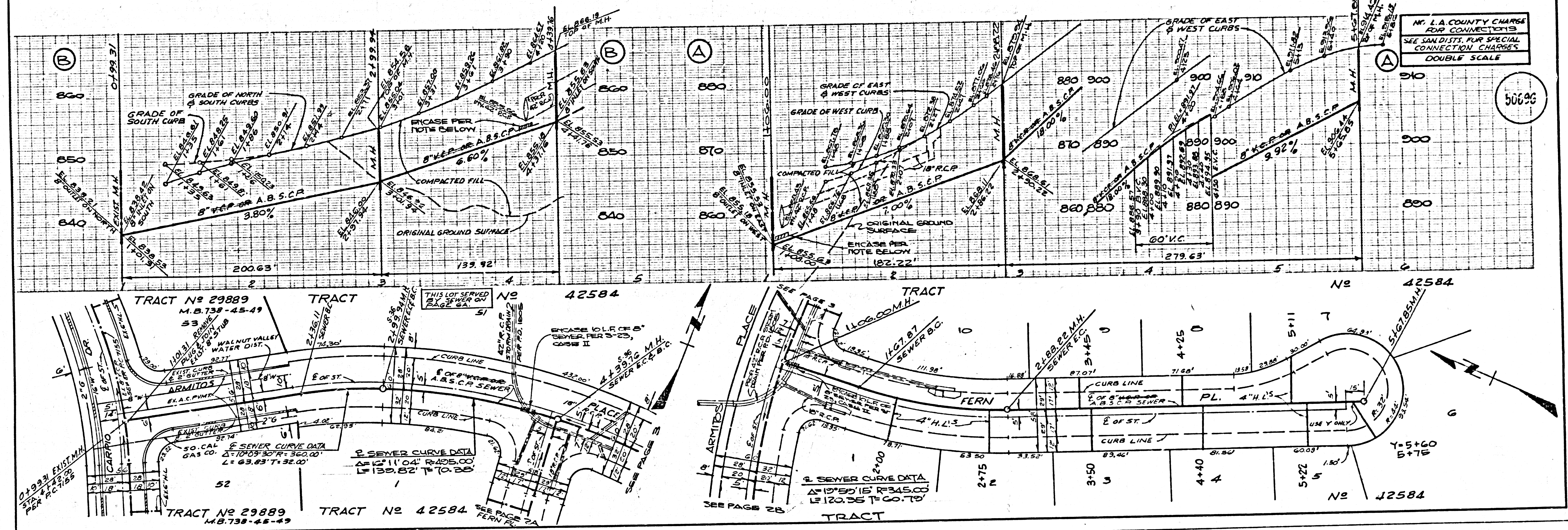
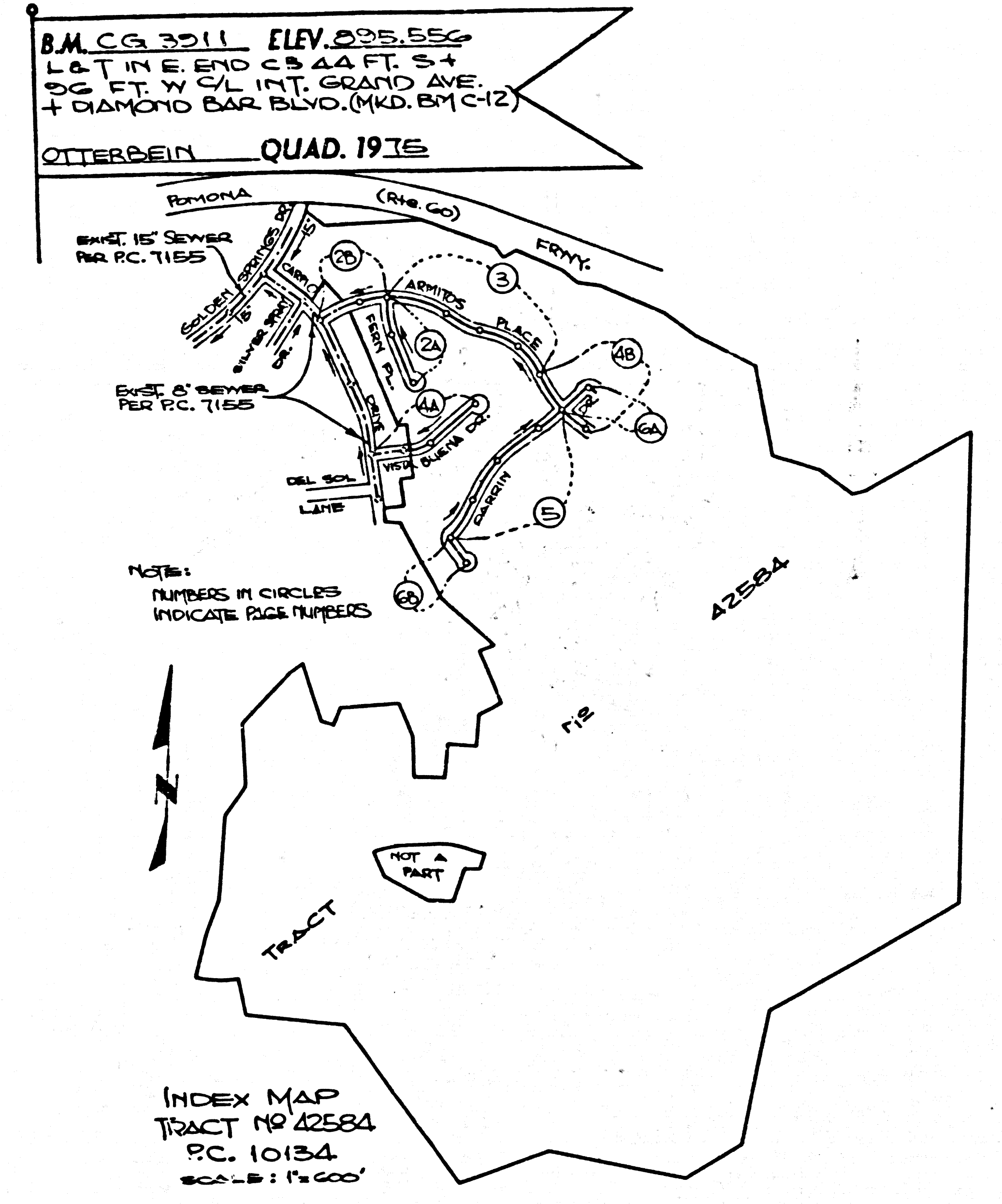
BEFORE BREAKING INTO OR CONSTRUCTION OF A COUNTY SANITATION DISTRICT SEWER AND PRIOR TO FINAL ACCEPTANCE OF THE PROJECT, SANITATION DISTRICT INSPECTOR SHALL BE NOTIFIED BY PHONE - 962-8405, TELETYPE SO THAT REQUIRED INSPECTION CAN BE MADE.

GENERAL NOTES:

- ELEVATIONS ARE IN FEET ABOVE U.S.C. & G.S. SEA LEVEL DATUM OF 1929.
- NO REVISIONS SHALL BE MADE IN THESE PLANS WITHOUT THE APPROVAL OF THE COUNTY ENGINEER.
- NO REPRESENTATIVE OF THE COUNTY ENGINEER WILL SURVEY OR LAY OUT ANY PORTION OF THE WORK.
- GRADES TO WHICH THIS IMPROVEMENT IS TO BE CONSTRUCTED ARE SHOWN ON PLANS AND PROFILES. GRADE POINTS FOR TOP OF CURBS, CENTER LINE OF STREETS, OR CENTER LINE OF ALLEYS ARE SHOWN BY CIRCLES ON PROFILES. AT ALL POINTS BETWEEN DESIGNATED POINTS THE GRADE SHALL BE ESTABLISHED SO AS TO CONFORM TO A STRAIGHT LINE DRAWN BETWEEN SAID DESIGNATED POINTS.
- THE PRIVATE ENGINEER SHALL FURNISH THE COUNTY ENGINEER WITH GRADE SHEETS AND STATIONING FOR ALL HOUSE LATERALS AND "Y" OR "T" BRANCHES AND PROVIDE STAKES FOR THEM AT THEIR PROPER LOCATIONS WITH STATIONING PLAINLY MARKED. ALL HOUSE LATERALS SHALL BE CONSTRUCTED IN A STRAIGHT ALIGNMENT AT RIGHT ANGLES FROM THE MANHOLE SEWER 20 FT. AS SHOWN ON THE PLANS. HOUSE LATERALS FROM CONNETTS SHALL NOT TAKE AN ANGLE OF LESS THAN 45° WITH THE MAIN LINE SEWER. ANY CHANGE IN ALIGNMENT SHALL BE REQUESTED IN WRITING BY THE PRIVATE ENGINEER.
- THE PRIVATE ENGINEER SHALL FURNISH THE HOUSE LATERAL DEPTH AT THE PROPERTY LINE BELOW THE TOP OF CURB ELEVATION FOR EACH HOUSE LATERAL ON THE GRADE SHEET.
- BEFORE WORK CAN BE STARTED, THE CONTRACTOR MUST OBTAIN A PERMIT TO EXCAVATE IN COUNTY STREETS FROM THE L.A. COUNTY ROAD DEPT., COVER OFFICE NO. _____ AND PAY A FEE TO THE COUNTY ENGINEER, 885 S. VERMONT AVENUE, LOS ANGELES, CA 90017, TO COVER THE COST OF CONSTRUCTION INSPECTION AND RECORD PLANS.
- IF WORK IS TO BE DONE IN A STATE HIGHWAY, A PERMIT MUST BE OBTAINED FROM THE STATE OF CALIFORNIA, DIVISION OF HIGHWAYS.
- APPROVAL OF THIS PLAN BY THE COUNTY OF LOS ANGELES DOES NOT CONSTITUTE A REPRESENTATION AS TO THE ACCURACY OF THE LOCATION OF OR THE EXISTENCE OR NON-EXISTENCE OF ANY UNDERGROUND UTILITY PIPE, OR STRUCTURE WITHIN THE LIMITS OF THIS PROJECT. THIS NOTE APPLIES TO ALL PAGES.
- REFER TO SECTION 154-A OF THE STANDARD SPECIFICATIONS, REGARDING SAFETY ORDERS.
- PRIOR TO THE ISSUANCE OF THE REQUIRED SEWER CONSTRUCTION PERMIT, THE CONTRACTOR SHALL OBTAIN AND FILE WITH THE COUNTY ENGINEER COPIES OF A PERMIT TO EXCAVATE IN COUNTY STREETS FROM THE LOS ANGELES COUNTY ROAD DEPARTMENT, A PERMIT FOR EXCAVATIONS AND TRENCHES FROM THE STATE OF CALIFORNIA, DIVISION OF INDUSTRIAL SAFETY AND A CERTIFICATE OF POWERERS COMPENSATION INSURANCE WITH THE DEPARTMENT OF COUNTY ENGINEER, 885 SOUTH VERMONT, RM. 408, LOS ANGELES, CALIFORNIA 90017, NAMED AS THE CERTIFICATE HOLDER TO BE NOTIFIED 30 DAYS PRIOR TO CANCELLATION OF POLICY.

CONSTRUCTION NOTES:

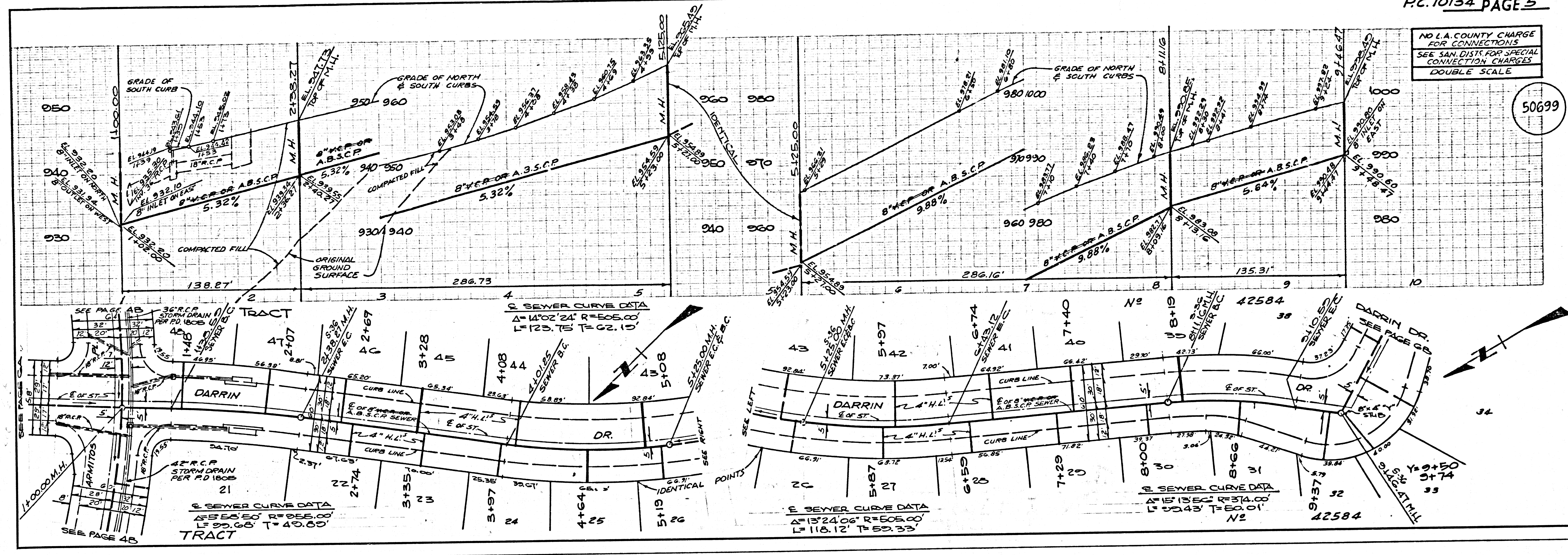
- WORK SHALL BE CONSTRUCTED ACCORDING TO THE STANDARD SPECIFICATIONS FOR PUBLIC WORKS CONSTRUCTION (1982 EDITION) (1982 SUPPLEMENT) AND COUNTY ENGINEER SPECIAL PROVISIONS FOR THE CONSTRUCTION OF SANITARY SEWERS DATED 5-27-81, 8-1976 AND SHALL BE PROSECUTED ONLY IN THE PRESENCE OF THE COUNTY ENGINEER.
- THE CONTRACTOR SHALL NOTIFY THE ENVIRONMENTAL DEVELOPMENT DIVISION BY TELEPHONE, 720-2181, AT LEAST TWENTY-FOUR HOURS BEFORE STARTING ANY WORK UNDER THIS CONTRACT.
- HOUSE LATERALS TO BE CONSTRUCTED WITH INVERTS AT PROPERTY LINE 8 FEET BELOW CURB (TYPICAL) EXCEPT AS NOTED.
- WYE OR TEE BRANCHES MAY BE USED FOR CONNECTIONS TO MAIN LINE SEWERS EXCEPT AS NOTED.
- WYE BRANCHES ONLY MAY BE USED FOR CONNECTIONS TO MAIN LINE SEWERS PER 5-26, EXCEPT AS NOTED.
- ALL STRUCTURES SHALL BE EITHER BRICK MANHOLES PER 5-26 OR PRECAST CONCRETE MANHOLES PER 5-26, EXCEPT AS NOTED.
- PROVIDE STAKES ON THE PROPERTY LINE OR PROPERTY LINES PRODUCED AT RIGHT ANGLES TO THE SEWER LINE AT THE CENTER LINE OF EACH MANHOLE.
- MANHOLE TOPS IN UNIMPROVED AREAS MAY BE SIX INCHES ABOVE FINISHED GRADE.
- WITHEDED CLAY PIPE JOINTS SHALL BE TYPE "D" OR "E" PER STANDARD SPECIFICATIONS SECTION 308-6.
- IF A POWER POLE IS WITHIN THREE FEET OF THE SEWER, THE SEWER SHALL BE ENCASED, PER 5-26, CASE 2, TWO FEET ON EACH SIDE FROM THE POINT OF INTERFERENCE.
- IF DURING THE COURSE OF CONSTRUCTION IT IS DETERMINED THAT THERE IS LESS THAN FOUR FEET OF COVER OVER THE TOP OF A MAIN LINE OR HOUSE LATERAL SEWER WHICH IS NOT INDICATED ON THE PLANS, THE PIPE SHALL BE ENCASED PER 5-26, CASE 2 UNLESS OTHERWISE APPROVED BY THE COUNTY ENGINEER.
- ALL JOINTS BETWEEN CAST IRON PIPE AND WITHEDED CLAY PIPE SHALL BE MADE WITH A RUBBER BLEEVE JOINT, TYPE "C" OR "D", WITH WITHEDED CLAY PIPE JOINTS PER 308-6. ALL JOINTS BETWEEN PRECAST CONCRETE MANHOLES AND SPECIAL PROVISIONS.
- SEWERS TO BE TESTED FOR LEAKAGE PER SECTION 308-6.2 OF THE STANDARD SPECIFICATIONS AND SPECIAL PROVISIONS.
- REINFORCE ALL TRENCHES WITHIN HAYWARD AREAS TO MEET L.A. COUNTY ROAD DEPT. OR CALIFORNIA STATE HIGHWAY REQUIREMENTS IN ACCORDANCE WITH PERMITS.
- FULL COMPLIANCE WITH SECTION 308-1.3.1 OF THE SPECIAL PROVISIONS WILL BE REQUIRED FOR BACKFILL IN STREETS. CERTIFICATION OF BACKFILL COMPACTION AND SAND EQUIVALENTS BY A QUALIFIED, REGISTERED TESTING LABORATORY SHALL BE PROVIDED BY THE PERMITTEE PRIOR TO THE BRANCH OF A CERTIFICATE OF PARTIAL ACCEPTANCE.
- SPECIAL BACKFILL IN BASEMENT CONSTRUCTION: (A) BACKFILL TRENCH AND REPLACE OTHER EARTH SO AS TO ACHIEVE THE NATURAL OR FINISHED GRADES AND SLOPES SHOWN ON THE DRAWING PLAN APPROVED FOR THIS DEVELOPMENT BY THE BUILDING AND SAFETY DIVISION; (B) ALL BACKFILL AND EARTH REPLACED SHALL BE COMPACTED TO A MINIMUM OF 90% OF MAXIMUM DENSITY PER A.S.T.M. STD. METHOD OF TEST D698-67 AS MODIFIED. ACCEPTABLE CERTIFICATION OF SUCH COMPACTION SHALL BE SUBMITTED TO THE ENVIRONMENTAL DEVELOPMENT DIVISION.



1
BC 10134
42584
OV
TRACT

NO L.A. COUNTY CHARGE FOR CONNECTIONS
SEE SAN. DIST. FOR SPECIAL CONNECTION CHARGES
DOUBLE SCALE

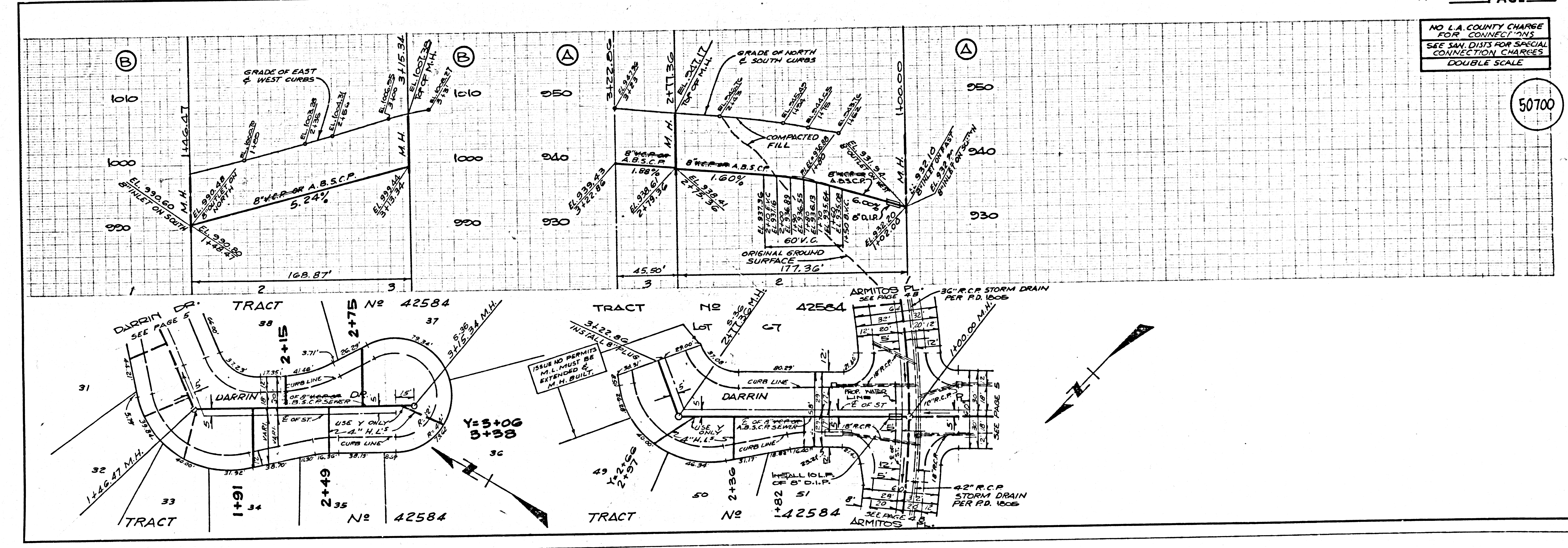
50699



PC.10134

NO L.A. COUNTY CHARGE FOR CONNECTIONS
SEE SAN. DIST. FOR SPECIAL CONNECTION CHARGES
DOUBLE SCALE

50700



4825A

01

TRACT