

SANITARY SEWERS

TO BE CONSTRUCTED IN

TRACT No 42586

PRIVATE CONTRACT NO. 10136

W.S. 39-02 2 SHEETS, 4 PAGES

51248

SCALE: HORIZ. 1"=80' VERT. 1"=8'

APRIL, 1983 PREPARED IN THE OFFICES OF

LIND & MILLER, INC. 2025 WILMINGTON DRIVE SAN MARINO, CA 91108

REG. C. E. No. 12233

THE FOLLOWING LATEST REVISED STANDARD PLANS ON FILE IN THE OFFICE OF THE COUNTY ENGINEER SHALL APPLY IN THE CONSTRUCTION OF THIS PROJECT:

SEWER	5.1
SEWER MANHOLE	5.2
SEWER CONNECTION	5.3
SEWER FITTING	5.4
SEWER FITTING	5.5
SEWER FITTING	5.6
SEWER FITTING	5.7
SEWER FITTING	5.8
SEWER FITTING	5.9
SEWER FITTING	5.10
SEWER FITTING	5.11
SEWER FITTING	5.12
SEWER FITTING	5.13
SEWER FITTING	5.14
SEWER FITTING	5.15
SEWER FITTING	5.16
SEWER FITTING	5.17
SEWER FITTING	5.18
SEWER FITTING	5.19
SEWER FITTING	5.20
SEWER FITTING	5.21
SEWER FITTING	5.22
SEWER FITTING	5.23
SEWER FITTING	5.24
SEWER FITTING	5.25

COUNTY OF LOS ANGELES, CALIFORNIA  
 STEPHEN J. KOONCE, COUNTY ENGINEER  
 WALTER E. GARRISON, CHIEF ENGINEER  
 APPROVED: *San J. Miller* 5/2/83  
 SAN DIMAS DIST. CHIEF ENGINEER  
 APPROVED: *Richard J. Garrison* 5/2/83  
 DISTRICT CHIEF ENGINEER  
 CHECKED: *Paul D. Smith* 5/2/83  
 DISTRICT CHIEF ENGINEER  
 REG. C. E. NO. 16883  
 SAN DIMAS BLDG. DIST. 10-00

GENERAL NOTES DOUBLE SCALE

- ELEVATIONS ARE IN FEET ABOVE U.S.C. & G.S.M. MEAN DATUM OF 1988.
- NO REVISIONS SHALL BE MADE IN THESE PLANS WITHOUT THE APPROVAL OF THE COUNTY ENGINEER.
- NO REPRESENTATIVE OF THE COUNTY ENGINEER SHALL SURVEY OR LAY OUT ANY PORTION OF THE WORK.
- GRADES TO WHICH THE IMPROVEMENT IS TO BE CONSTRUCTED ARE SHOWN ON PLANS AND PROFILES. GRADE POINTS FOR TOP OF CURB, CENTER LINE OF STREET, OR CENTER LINE OF ALLEYS ARE SHOWN BY CIRCLES OR TRIANGLES AT ALL POINTS BETWEEN DESIGNATED POINTS THE GRADE SHALL BE ESTABLISHED SO AS TO CONFORM TO A STRAIGHT LINE DRAWN BETWEEN SAID DESIGNATED POINTS.
- THE PRIVATE ENGINEER SHALL FURNISH THE COUNTY ENGINEER WITH GRADE SHEETS AND STATIONING FOR ALL HOUSE LATERALS AND ALL "T" BRANCHES AND SHALL PROVIDE STAKES FOR THEM AT THEIR PROPER LOCATIONS WITH STATIONING PLANT MARKED. ALL HOUSE LATERALS SHALL BE CONSTRUCTED IN A STRAIGHT ALIGNMENT AT RIGHT ANGLES FROM THE MAIN LINE SEWER EXCEPT AS SHOWN ON THE PLANS. HOUSE LATERALS FROM CONCRETE SHALL NOT HAVE AN ANGLE OF LESS THAN 90° WITH THE MAIN LINE SEWER. ANY CHANGE IN ALIGNMENT SHALL BE REQUESTED IN WRITING BY THE PRIVATE ENGINEER.
- THE PRIVATE ENGINEER SHALL FURNISH THE HOUSE LATERAL DEPTH AT THE PROPERTY LINE BELOW THE TOP OF CURB ELEVATION FOR EACH HOUSE LATERAL ON THE GRADE SHEET.
- BEFORE WORK CAN BE STARTED, THE CONTRACTOR MUST OBTAIN A PERMIT TO EXCAVATE IN COUNTY STREETS FROM THE L.A. COUNTY ROAD DEPT., DISTRICT OFFICE NO. \_\_\_\_\_ AND PAY A FEE TO THE COUNTY ENGINEER, 880 S. VERNON AVE., LOS ANGELES, CA 90004, TO COVER THE COST OF CONSTRUCTION INSPECTION AND RECORD PLANS.
- IF WORK IS TO BE DONE IN A STATE HIGHWAY, A PERMIT MUST BE OBTAINED FROM THE STATE OF CALIFORNIA, DIVISION OF HIGHWAYS, 800 SOUTH BRIDGE STREET, LOS ANGELES, CALIFORNIA.
- APPROVAL OF THIS PLAN BY THE COUNTY OF LOS ANGELES DOES NOT CONSTITUTE A REPRESENTATION AS TO THE ACCURACY OF THE LOCATION OF OR THE EXISTENCE OR NON-EXISTENCE OF ANY UNDERGROUND UTILITY PIPE, OR STRUCTURE WITHIN THE LIMITS OF THIS PROJECT. THIS NOTE APPLIES TO ALL BILLS.
- REFER TO SECTION 73.04 OF THE STANDARD SPECIFICATIONS, REGARDING SAFETY ORDERS.
- PRIOR TO THE ISSUANCE OF THE REQUIRED SEWER CONSTRUCTION PERMIT, THE CONTRACTOR SHALL OBTAIN AND FILE WITH THE COUNTY ENGINEER COPIES OF A PERMIT TO EXCAVATE IN COUNTY STREETS FROM THE LOS ANGELES COUNTY ROAD DEPARTMENT, A PERMIT FOR EXCAVATIONS AND TRENCHES FROM THE STATE OF CALIFORNIA, DIVISION OF INDUSTRIAL SAFETY AND A CERTIFICATE OF WORKERS COMPENSATION INSURANCE WITH THE DEPARTMENT OF COUNTY ENGINEER, 880 SOUTH VERNON, R.M. 98, LOS ANGELES, CALIFORNIA 90004, NAMED AS THE CERTIFICATE HOLDER TO BE NOTIFIED 30 DAYS PRIOR TO CANCELLATION OF POLICY.

CONSTRUCTION NOTES:

- WORK SHALL BE CONSTRUCTED ACCORDING TO THE STANDARD SPECIFICATIONS FOR PUBLIC WORKS CONSTRUCTION (1982 EDITION) WITH THE SUPPLEMENTS AND COUNTY ENGINEER SPECIAL PROVISIONS FOR THE CONSTRUCTION OF SANITARY SEWERS DATED 11/28/78.
- THE CONTRACTOR SHALL NOTIFY THE ENVIRONMENTAL DEVELOPMENT DIVISION BY TELEPHONE, FAX OR MAIL, AT LEAST TWENTY-FOUR HOURS BEFORE STARTING ANY WORK UNDER THE CONTRACT.
- HOUSE LATERALS TO BE CONSTRUCTED WITH INVERTS AT PROPERTY LINE 1 FOOT BELOW CURB GRADE EXCEPT AS NOTED.
- PIPE OR TRENCHES MAY BE USED FOR CONNECTIONS TO MAINLINE SEWERS EXCEPT AS NOTED.
- ALL STRUCTURES SHALL BE EITHER 36" OR 48" R.C.P. OR 6" OR 8" A.B.S.C.P. EXCEPT AS NOTED.
- PROVIDE STAKES ON THE PROPERTY LINE OR PROPERTY LINES PRODUCED AT RIGHT ANGLES TO THE SEWER LINE AT THE CENTER LINE OF EACH MANHOLE.
- MANHOLE TOPS IN UNIMPROVED AREAS OF 18" TO 24" SHALL BE 24" ABOVE FINISHED GRADE.
- WETTED CLAY PIPE JOINTS SHALL BE TYPE "O" OR "P" PER STANDARD SPECIFICATIONS SECTION 73.04.
- IF A POWER POLE IS WITHIN THREE FEET OF THE SEWER THE SEWER SHALL BE ENCASED, PER 8-2.6, CASE 2, TWO FEET ON EACH SIDE FROM THE POINT OF INTERFERENCE.
- IF DURING THE COURSE OF CONSTRUCTION IT IS DETERMINED THAT THERE IS LESS THAN FOUR FEET OF COVER OVER THE TOP OF A MAIN LINE OR HOUSE LATERAL SEWER WHICH IS NOT INDICATED ON THE PLANS, THE PIPE SHALL BE ENCASED PER 8-2.6, CASE 1 UNLESS OTHERWISE APPROVED BY THE COUNTY ENGINEER.
- ALL JOINTS BETWEEN CAST IRON PIPE AND WETTED CLAY PIPE SHALL BE MADE WITH A RUBBER SLEEVE JOINT, TYPE "O" OR "P", FIFTY BUSHINGS PER MANHOLE PER STANDARD SPECIFICATIONS SECTION 73.04.
- ALL TRENCHES SHALL BE BACKFILLED WITH 3/4" SAND OR EQUIVALENT MATERIAL WITH APPROVED 1/4" FILTER FABRIC OVER THE TRENCHES PER SECTION 73.04 OF THE STANDARD SPECIFICATIONS FOR PUBLIC WORKS CONSTRUCTION.
- INSURE ALL TRENCHES WITHIN PAVED AREAS TO MEET L.A. COUNTY ROAD DEPT. OR CALIFORNIA STATE HIGHWAY REQUIREMENTS IN ACCORDANCE WITH PERMITS.
- FULL COMPLIANCE WITH SECTION 88-1.5.3 OF THE SPECIAL PROVISIONS WILL BE REQUIRED FOR BACKFILL IN STREETS. CERTIFICATION OF BACKFILL COMPACTION AND SAND EQUIVALENTS BY A QUALIFIED, REGISTERED TESTING LABORATORY SHALL BE PROVIDED BY THE PERMITTEE PRIOR TO THE ISSUANCE OF A CERTIFICATE OF PARTIAL ACCEPTANCE.
- SPECIAL BACKFILL IN BASEMENT CONSTRUCTION: (A) BACKFILL TRENCH AND REPLACE OTHER EARTH SO AS TO ACHIEVE THE NATURAL OR FINISHED GRADES AND SLOPES SHOWN ON THE GRADING PLAN APPROVED FOR THE DEVELOPMENT OF THE BUILDING AND SAFETY DIVISION. (B) ALL BACKFILL AND SAFETY REPLACEMENT SHALL BE COMPACTED TO A MINIMUM OF 90% OF MAXIMUM DENSITY PER A.S.T.M. STD. METHOD OF TEST D1557 AS MODIFIED. ACCEPTABLE CERTIFICATION OF SUCH COMPACTION SHALL BE SUBMITTED TO THE ENVIRONMENTAL DEVELOPMENT DIVISION.

PRIVATE ENGINEERS NOTICE TO CONTRACTORS

The existence and location of any underground utility pipes or structures shown on these plans are obtained by search of the available records. To the best of our knowledge there are no existing utilities except as shown on these plans. The contractor is required to take due precautionary measures to protect the utility lines shown and any other lines not recorded or not shown on these plans.

*J.B.L.*  
 Registered Engineer R.C.E. 19233

NO CONNECTION FOR THE DISPOSAL OF INDUSTRIAL WASTES SHALL BE MADE TO SEWERS KNOWN ON THESE DRAWINGS UNTIL A PERMIT FOR INDUSTRIAL WASTEWATER DISCHARGE HAS BEEN ISSUED BY THE SANITATION DISTRICTS FOR SAID CONNECTION.

BEFORE PREPARING INTO OR CONSTRUCTION OF A COUNTY SANITATION DISTRICT SEWER PRIOR TO FINAL ACCEPTANCE OF THE PROJECT, SANITATION DISTRICT INSPECTOR SHALL BE NOTIFIED BY PHONE - 942-8401, WRITTEN SO THAT REQUIRED INSPECTION CAN BE MADE.

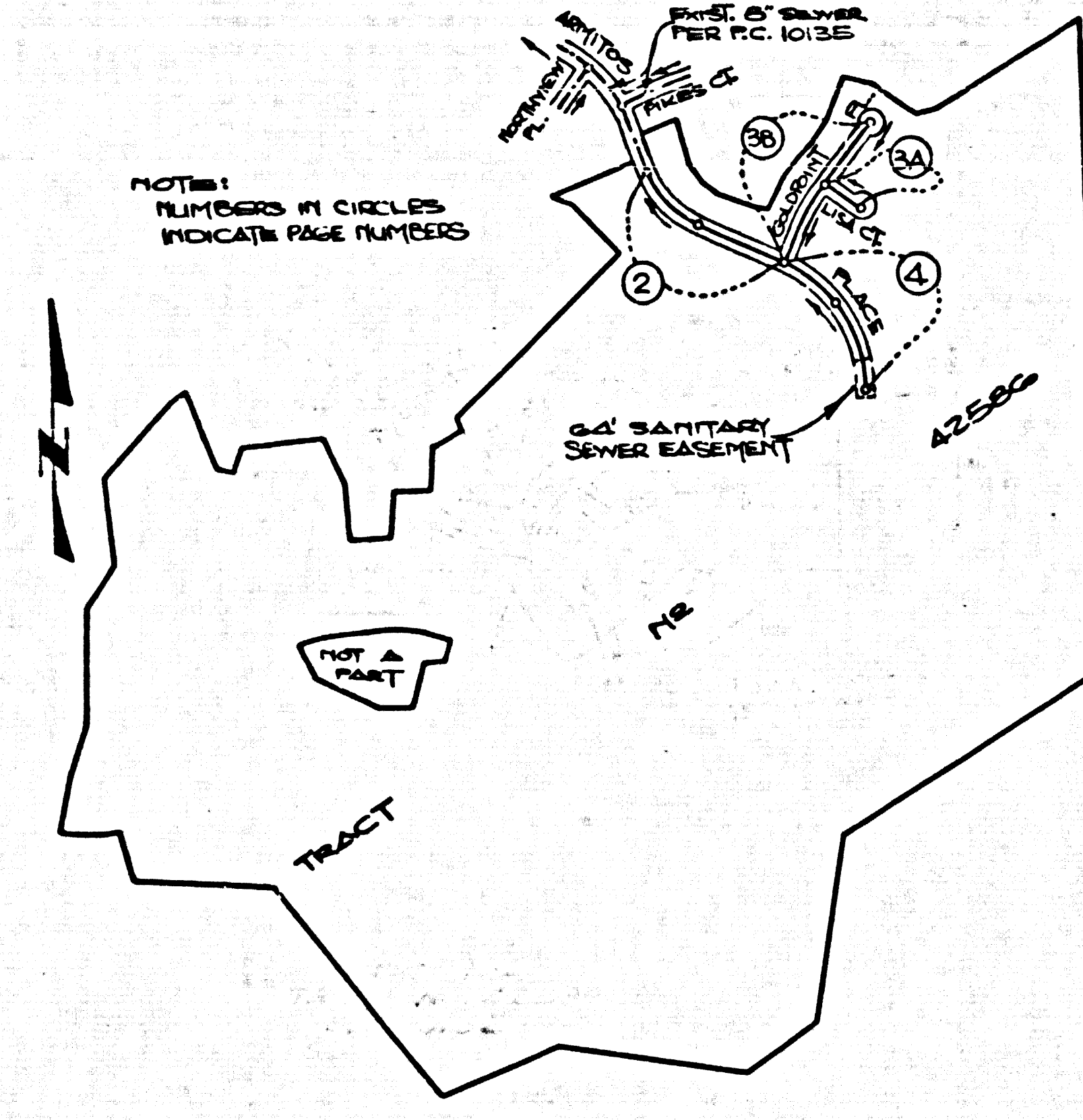
CONSTRUCTION NOTES CONT'D.

- FULL COMPLIANCE WITH PART III OF THE SPECIAL PROVISIONS IS REQUIRED FOR THE INSTALLATION OF A.B.S. COMPOSITE PIPE.
- HANDLE WATER STOP BANDS & CLAMPS ARE REQUIRED FOR THE CONNECTION OF A.B.S. COMPOSITE PIPE TO MANHOLE STRUCTURES.
- A.B.S. SOLID WALL PIPE MUST BE USED FOR 12" & 18" HOUSE LATERAL CONNECTIONS TO A.B.S. COMPOSITE MAINLINE SEWER PIPE.
- A.B.S. COMPOSITE PIPE SHALL BE JOINTED IN CONFORMANCE WITH THE TABLE IN SECTION B-3.1 OF PART III OF THE SPECIAL PROVISIONS.
- PIPE DERIVATION FITTINGS ARE REQUIRED FOR ANGLES OF CURVATURE LESS THAN 380 FEET WHEN USING 8" A.B.S.C.P.
- NO CONNECTION FOR DISPOSAL OF INDUSTRIAL WASTES IS ALLOWED IF A.B.S. COMPOSITE PIPE IS USED.
- SEWERLINE CURVATURE SHALL NOT BE ACHIEVED BY PULLING OF POINTS OR SWELLING PIPE ENDS WHEN USING PLASTIC PIPE INCLUDING A.B.S. COMPOSITE PIPE.

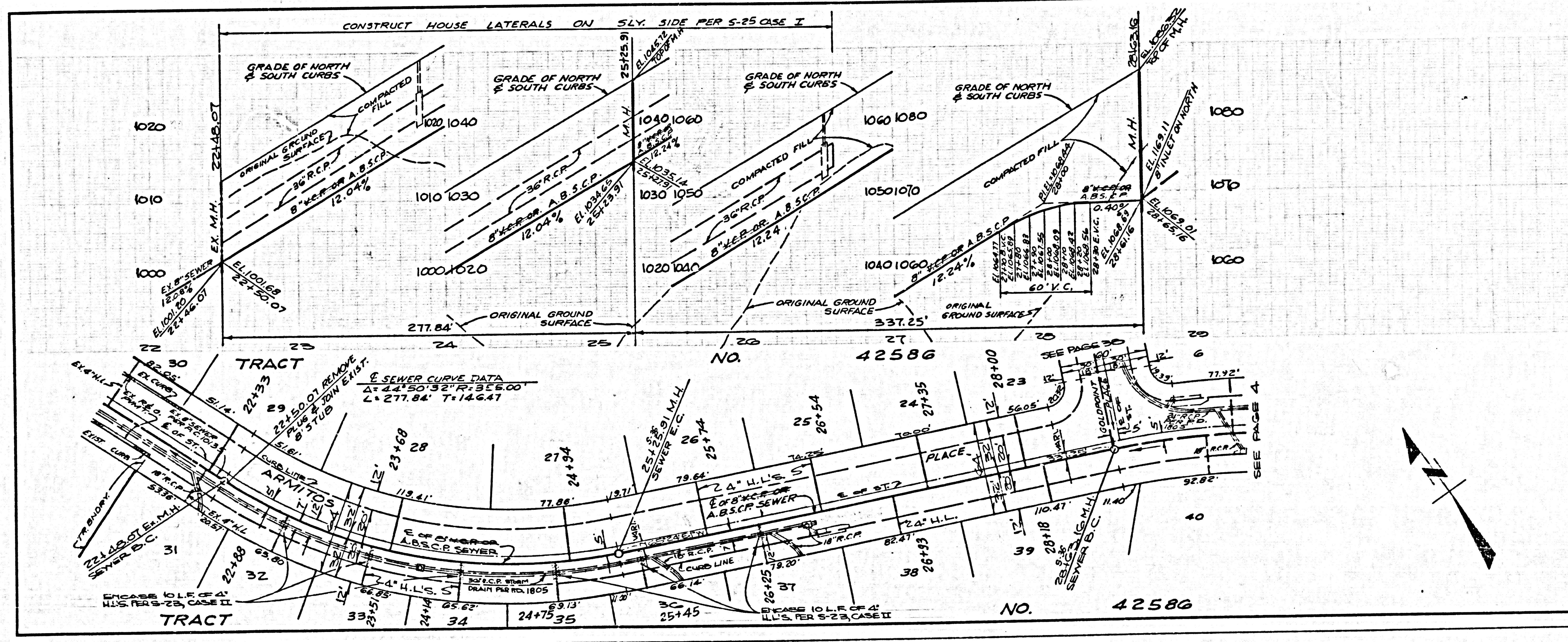
NOTE: ISSUE NO H.C. PERMITS UNTIL R.C.'S. 10134 & 10135 ARE ACCEPTED

NOTE: ISSUE H.C. PERMITS FOR LOTS 30 & 31 FROM P.C. 10135 PAGE 2B.

B.M. CG 3211 ELEV. 825.552  
 LAT. IN. END CB 44 FT. 9.4  
 55 FT. W. CL. INT. GRAND AVE. +  
 DIAMOND BAR BLVD. (M.K.D. B.M. C-12)  
 OTTENSEN QUAD. 19 15



INDEX MAP  
 TRACT NO. 42586  
 P.C. 10136  
 SCALE: 1" = 500'



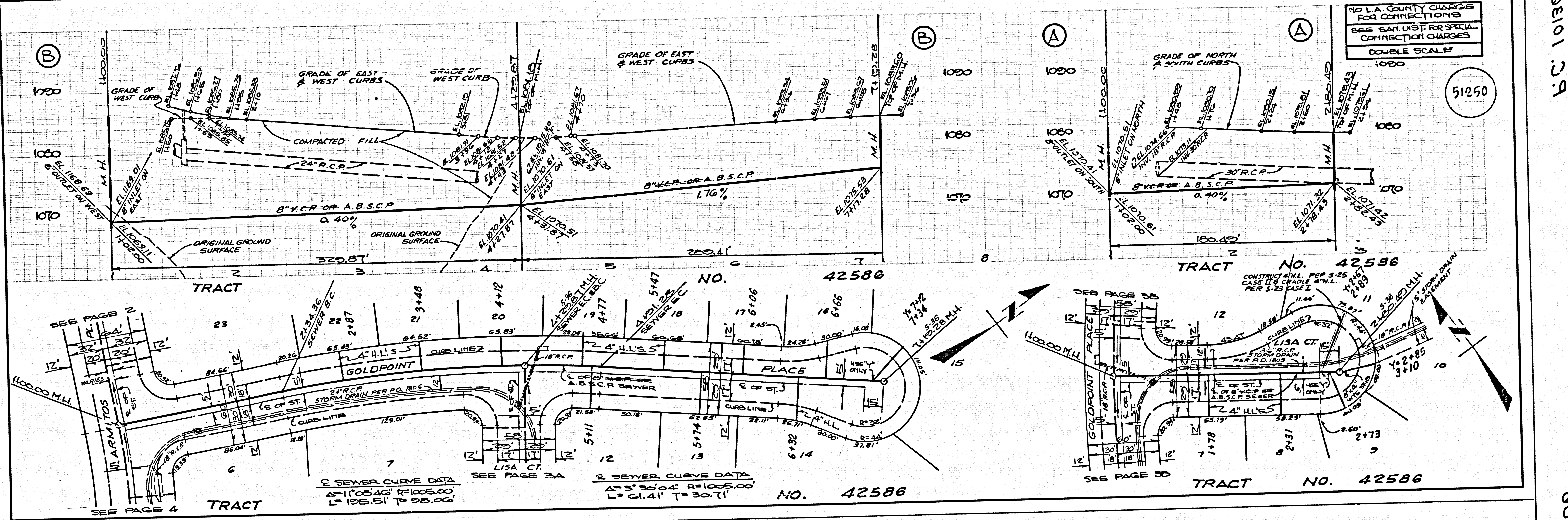
NO L.A. COUNTY CHARGE FOR CONNECTIONS  
 SEE SAN. DIST. FOR SPECIAL CONNECTION CHARGES  
 DOUBLE SCALE

51249



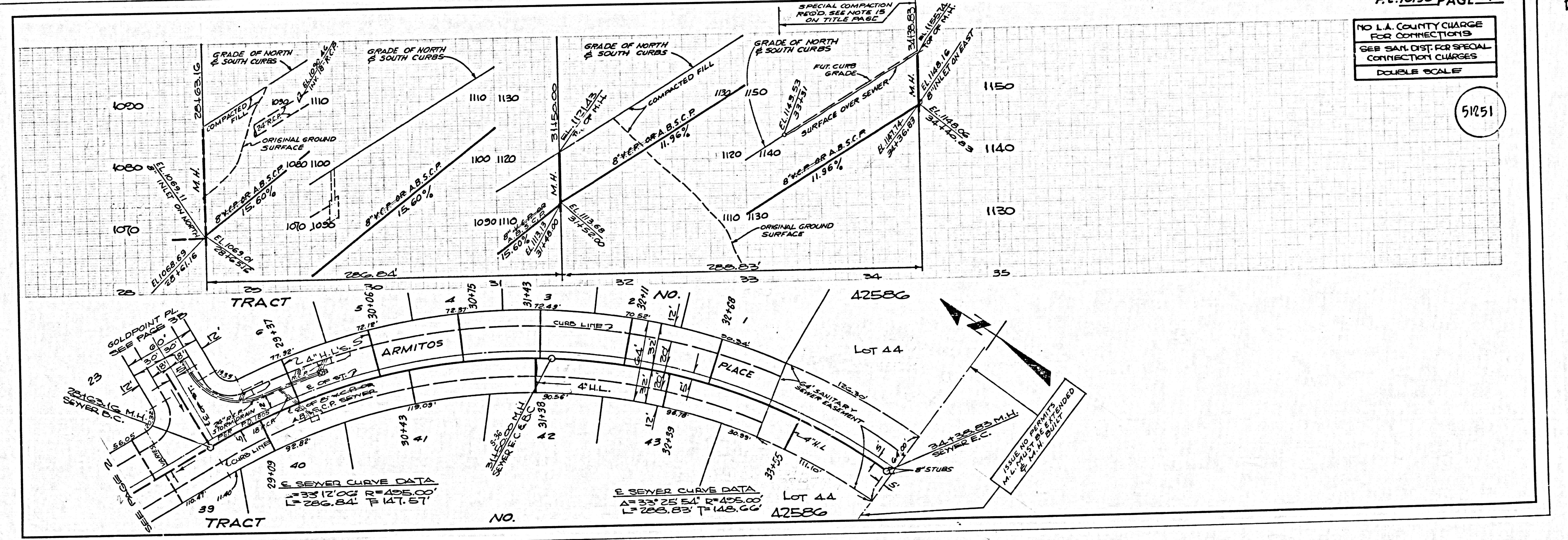
NO L.A. COUNTY CHARGE FOR CONNECTIONS  
SEE SAN. DIST. FOR SPECIAL CONNECTION CHARGES  
DOUBLE SCALE  
1000

51250



NO L.A. COUNTY CHARGE FOR CONNECTIONS  
SEE SAN. DIST. FOR SPECIAL CONNECTION CHARGES  
DOUBLE SCALE  
1000

51251



32101 3A  
3825A  
3A