

TO BE CONSTRUCTED IN
TRACT No. 34824
PRIVATE CONTRACT NO. 10140
INDEX 270 S 137, 270 S 141
C-A-83

4 SHEETS, 8 PAGES
SCALE: VERT. 1"=4' HORIZ. 1"=40'
MAY 1983
PREPARED IN THE OFFICES OF
ENGINEERING SERVICE CORPORATION
6017 BRISTOL PARKWAY, CULVER CITY, CALIFORNIA, 90230
BY: *J. Merzelle*
REG. C. E. No. 13085

THE FOLLOWING LATEST REVISED STANDARD PLANS ON FILE IN THE OFFICE OF THE COUNTY ENGINEER SHALL APPLY IN THE CONSTRUCTION OF THIS PROJECT:

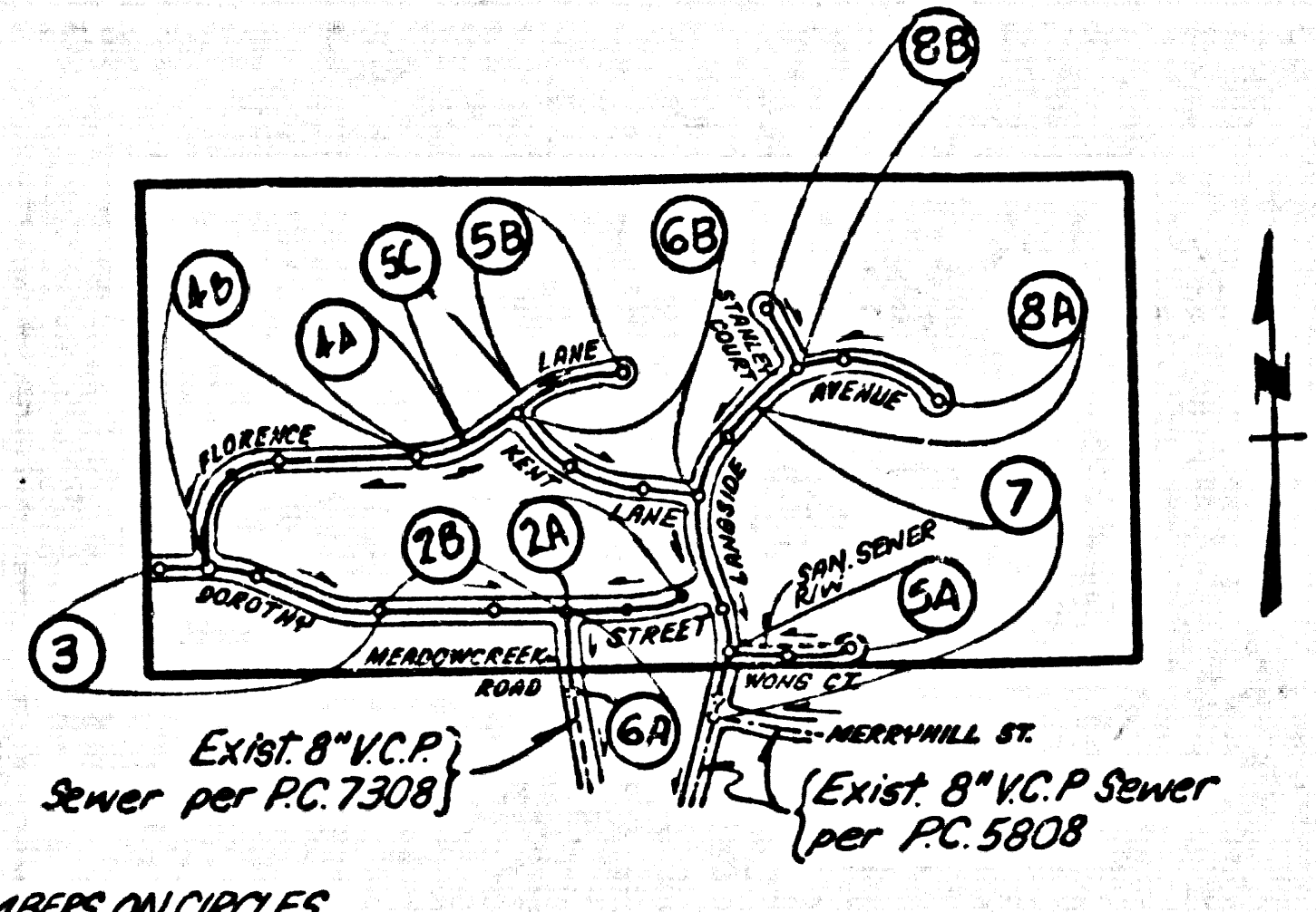
MINIMUM PERMIT SAFETY REQUIREMENTS	51
BRICK MANHOLES	52
STANDARD MANHOLE STOP	53
BRICKS FOR SEWER PIPE	54
WYS ON THE SUPPORT	55
ALLOWABLE TRENCH WIDTHS	56
ROCKING MANHOLES FRAME AND COVER	57
NON-IMPREGATED PRECAST CONCRETE MANHOLES	58
SPECIAL HOUSE LATERALS	59

COUNTY OF LOS ANGELES, CALIFORNIA
STEPHEN J. KOONCE COUNTY ENGINEER WALTER E. GARRISON, CHIEF ENGINEER
APPROVED *Walter E. Garrison* 8-25-83
CHECKED *Ralph David Saint* 9/24/83
SOUTH CLARITA VALLEY BLDG. DIST. 8.2

B.M.C.L. 5060 ELEV. 1633.683
L & TAG "15 2602" IN S.C.B. 6 FT. E/O
B.C.R. @ SE. COR. LANGSIDE AVE &
MERCERHILL ST. 18 FT. S. EST. E/O & INT.
NEWHALL QUAD. 1974

DOUBLE SCALE

- CONSTRUCTION NOTES (CONT.):**
15. INVE BRANCHES ONLY MAY BE USED FOR CONNECTIONS TO MAIN LINE SEWER IF A.B.S.C.P. IS USED.
 16. ALL JOINTS BETWEEN CAST IRON PIPE AND A.B.S.C.P. SHALL BE MADE WITH APPROVED FITTINGS.
 17. FULL COMPLIANCE WITH PARTS OF SPECIAL PROVISIONS IS REQUIRED FOR THE INSTALLATION OF A B.S. COMPOSITE PIPE AND A B.S. SOLID WALL HOUSE LATERALS.
 18. MANHOLE WATER STOP GASKETS AND CLEARANCE AREAS REQUIRED FOR THE CONNECTION OF A B.S. COMPOSITE PIPE TO MANHOLE STRUCTURES.
 19. A B.S. SOLID WALL PIPE MUST BE USED FOR AVE AND HOUSE LATERALS CONNECTIONS TO A.B.S. COMPOSITE MAIN LINE SEWER PIPE.
 20. 3-DEGREE DEFLECTION COUPLERS MUST BE USED TO ACCOMPLISH ANGLE OF TURN OTHER LESS THAN 30°.
 21. SPECIAL BACKFILL IN EMBANKMENT CONSTRUCTION.
 22. BACKFILL TRENCH AND REPLACE OTHER GROUND SOAS TO ACHIEVE THE ORIGINAL OR FINISHED GRADES 1' BELOW ON THE GRADES PLAN APPROVED FOR THIS DEVELOPMENT BY THE BUILDING AND SAFETY DIVISION.
 23. ALL BACKFILL AND BIRTH REPLACED SHALL BE COMPACTED TO A MINIMUM OF 90% OF MAXIMUM DENSITY PER ASTM STANDARD METHOD OF D698-57T AS MODIFIED. ACCEPTABLE CERTIFICATION OF SUCH COMPACTION SHALL BE SUBMITTED TO THE ENVIRONMENTAL DEVELOPMENT DIVISION.



INDEX MAP
SCALE: 1"=600'
R.C. No. 10140
TRACT No. 34824

NO CONNECTION FOR THE DISPOSAL OF INDUSTRIAL WASTES SHALL BE MADE TO SEWERS SHOWN ON THESE DRAWINGS UNTIL A PERMIT FOR INDUSTRIAL WASTEWATER DISCHARGE HAS BEEN ISSUED BY THE SANITATION DISTRICTS IN SAID CONNECTION.

BEFORE BREAKING INTO OR CONSTRUCTION IN A COUNTY SANITATION DISTRICT SEWER PRIOR TO FINAL ACCEPTANCE OF THE PROJECT, SANITATION DISTRICT INSPECTOR SHALL BE NOTIFIED BY PHONE - 942-8405, SO THAT REQUIRED INSPECTION CAN BE MADE.

PRIVATE ENGINEER'S NOTICE TO CONTRACTOR

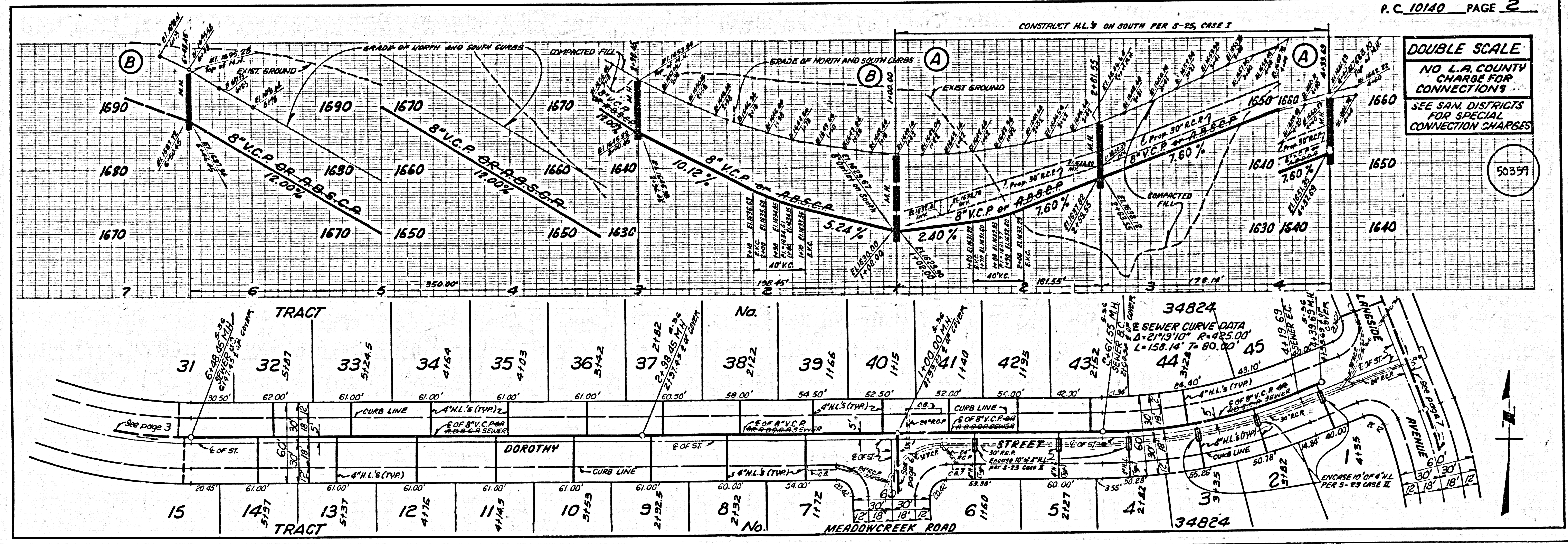
The existence and location of any underground utility pipes or structures shown on these plans are obtained by a search of the available records. To the best of our knowledge there are no existing utilities except as shown on this map.

The Contractor is required to take precautionary measures to protect the utility lines shown and any other lines not of record or not shown on this drawing.

Contractor agrees that he shall assume sole and complete responsibility for job site conditions during the course of construction of this Project, including safety of all persons and property; that this requirement shall apply continuously and not be limited to normal working hours; and that the Contractor shall defend, indemnify and hold the Owner and the Engineer harmless from any and all liability, real or alleged, in connection with the performance of work on this Project, excepting for liability arising from the sole negligence of the Owner or the Engineer.

- GENERAL NOTES:**
1. ELEVATIONS ARE IN FEET ABOVE U.S.C. & G.S. SEA LEVEL DATUM OF 1929.
 2. NO REVISIONS SHALL BE MADE IN THESE PLANS WITHOUT THE APPROVAL OF THE COUNTY ENGINEER.
 3. NO REPRESENTATIVE OF THE COUNTY ENGINEER WILL SURVEY OR LAY OUT ANY PORTION OF THE WORK.
 4. GRADES TO WHICH THIS IMPROVEMENT IS TO BE CONSTRUCTED ARE SHOWN ON PLANS AND PROFILES. GRADE POINTS FOR TOP OF CURBS, CENTER LINE OF STREETS, OR CENTER LINE OF ALLEYS ARE SHOWN BY CIRCLES ON PROFILES. AT ALL POINTS BETWEEN DESIGNATED POINTS THE GRADE SHALL BE ESTABLISHED SO AS TO CONFORM TO A STRAIGHT LINE BETWEEN SAID DESIGNATED POINTS.
 5. THE PRIVATE ENGINEER SHALL FURNISH THE COUNTY ENGINEER WITH GRADE SHEETS AND STATIONING FOR ALL HOUSE LATERALS AND "T" OR "Y" BRANCHES AND SHALL PROVIDE STAKES FOR THEM AT THEIR PROPER LOCATIONS WITH STATIONING PLAINLY MARKED. ALL HOUSE LATERALS SHALL BE CONSTRUCTED IN A STRAIGHT ALIGNMENT AT RIGHT ANGLES FROM THE MAIN LINE SEWER EXCEPT AS SHOWN ON THE PLANS. HOUSE LATERALS FROM CURBS SHALL NOT HAVE AN ANGLE OF LESS THAN 45° WITH THE MAIN LINE SEWER. ANY CHANGE IN ALIGNMENT SHALL BE INDICATED IN WRITING BY THE PRIVATE ENGINEER.
 6. THE PRIVATE ENGINEER SHALL FURNISH THE HOUSE LATERAL WITH AN INVERTING LINE SHOWING THE TOP OF CURB RELEVATION FOR EACH HOUSE LATERAL ON THE GRADE SHEET.
 7. BEFORE WORK CAN BE STARTED, THE CONTRACTOR MUST OBTAIN A PERMIT TO EXCAVATE IN COUNTY STREETS FROM THE L.A. COUNTY ROAD DEPT., DISTRICT OFFICE NO. 5 AND PAY A FEE TO THE COUNTY ENGINEER, 550 S. VERMONT, ROOM 406, LOS ANGELES, TO COVER THE COST OF CONSTRUCTION INSPECTION AND RECORD PLANS.
 8. IF WORK IS TO BE DONE IN A STATE HIGHWAY, A PERMIT MUST BE OBTAINED FROM THE STATE OF CALIFORNIA, DIVISION OF HIGHWAYS, 138 SOUTH SPRING STREET, LOS ANGELES, CALIFORNIA.
 9. APPROVAL OF THIS PLAN BY THE COUNTY OF LOS ANGELES DOES NOT CONSTITUTE A REPRESENTATION AS TO THE ACCURACY OF THE LOCATION OF OR THE EXISTENCE OR NON-EXISTENCE OF ANY UNDERGROUND UTILITY PIPE, OR STRUCTURE WITHIN THE LIMITS OF THE PROJECT. THIS NOTE APPLIES TO ALL PAGES.
 10. REFER TO SECTION 7.1.1.1 OF THE STANDARD SPECIFICATIONS, REGARDING SAFETY OBSTACLES.
 11. PRIOR TO THE ISSUANCE OF THE REQUIRED SEWER CONSTRUCTION PERMIT, THE CONTRACTOR SHALL OBTAIN AND FILE WITH THE COUNTY ENGINEER, COPIES OF A PERMIT TO EXCAVATE IN COUNTY STREETS FROM THE LOS ANGELES COUNTY ROAD DEPARTMENT, A PERMIT FOR EXCAVATIONS AND TRENCHES FROM THE STATE OF CALIFORNIA, DIVISION OF INDUSTRIAL SAFETY AND A CERTIFICATE OF ADEQUACY OF ADEQUACY OF ADEQUACY INSURANCE FROM THE DEPARTMENT OF COUNTY ENGINEER, 550 S. VERMONT, ROOM 406, LOS ANGELES, CALIFORNIA 90020, NAMED AS THE CERTIFICATE HOLDER TO BE NOTIFIED 30 DAYS PRIOR TO CANCELLATION OF POLICY.

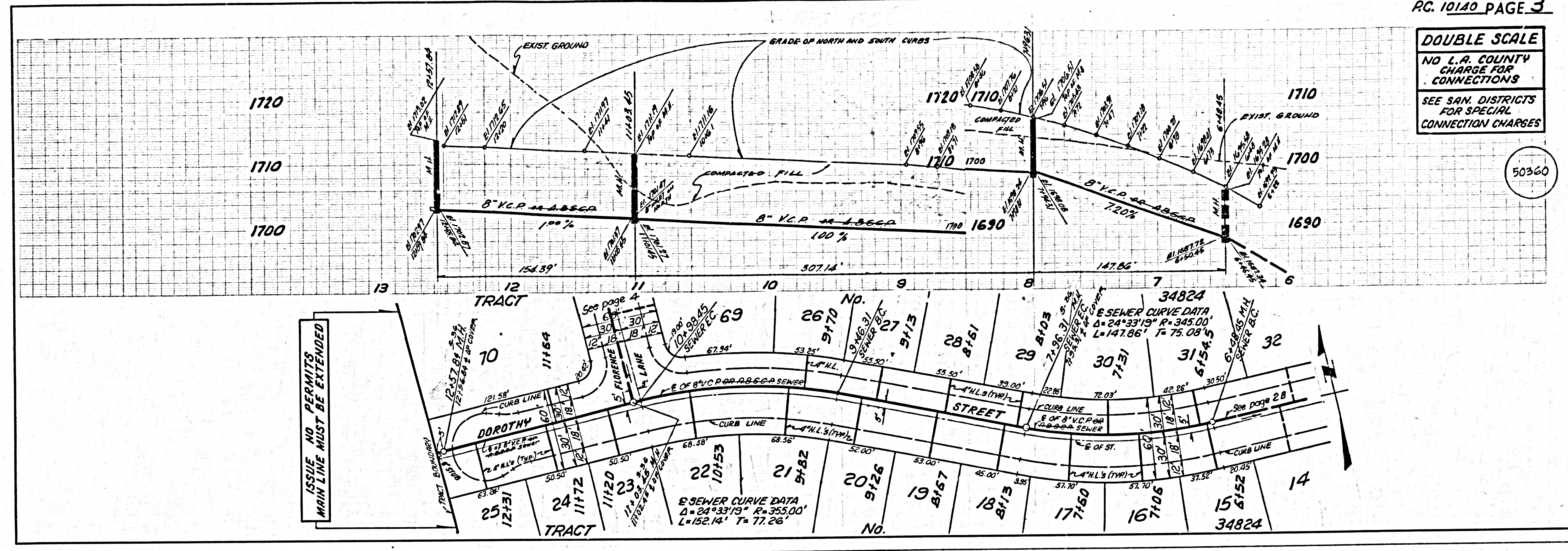
- CONSTRUCTION NOTES:**
1. WORK SHALL BE CONSTRUCTED ACCORDING TO THE STANDARD SPECIFICATIONS FOR PUBLIC WORKS CONSTRUCTION (1982 EDITION) WITH 1983 SUPPLEMENTS AND COUNTY ENGINEER SPECIAL PROVISIONS FOR THE CONSTRUCTION OF SANITARY SEWERS DATED 12/22/82.
 2. THE CONTRACTOR SHALL NOTIFY THE ENVIRONMENTAL DEVELOPMENT DIVISION BY TELEPHONE 807-2164 AT LEAST TWENTY-FOUR HOURS BEFORE STARTING ANY WORK UNDER THIS CONTRACT.
 3. HOUSE LATERALS TO BE CONSTRUCTED WITH INVERTS AT PROPERTY LINE 4 FEET BELOW CURB GRADE EXCEPT AS NOTED.
 4. WYS ON THE BRANCHES MAY BE USED FOR CONNECTIONS TO MAINLINE SEWERS EXCEPT AS NOTED.
 5. ALL STRUCTURES SHALL BE EITHER BRICK MANHOLES PER S-24 OR PRECAST CONCRETE MANHOLES PER S-26, EXCEPT AS NOTED.
 6. PROVIDE STAKES ON THE PROPERTY LINE OR PROPERTY LINE PRODUCE AT RIGHT ANGLES TO THE SEWER LINE AT THE CENTER LINE OF EACH MANHOLE.
 7. MANHOLE TOPS IN UNIMPROVED RIGHTS OF WAY TO BE SIX INCHES ABOVE FINISHED GRADE.
 8. WITNESS CLAY PIPE JOINTS SHALL BE TYPE "B" OR "C" PER STANDARD SPECIFICATIONS SECTION 306-2.
 9. IF A POWER POLE IS WITHIN THREE FEET OF THE SEWER, THE SEWER SHALL BE ENCASED, PER S-23, CASE II, TWO FEET ON EACH SIDE FROM THE POINT OF INTERFERENCE.
 10. IF BURNING THE COURSE OF CONSTRUCTION IT IS DETERMINED THAT THERE IS LESS THAN FOUR FEET OF COVER OVER THE TOP OF A MANHOLE OR HOUSE LATERAL, TOP OF A.B.S. COMPOSITE MANHOLE AND HOUSE LATERAL SHALL BE SHALL BE ENCASED PER S-23, CASE II, UNLESS OTHERWISE APPROVED BY THE COUNTY ENGINEER.
 11. ALL JOINTS BETWEEN CAST IRON PIPE AND WITNESS CLAY PIPE SHALL BE MADE WITH A RUBBER SLEEVE JOINT, TYPE "C" OR "D", WITH BURNING IF NECESSARY PER STANDARD SPECIFICATIONS, SECTION 306-2.
 12. SEWERS TO BE TESTED FOR LEAKAGE PER SECTION 306-1.6 OF THE STANDARD SPECIFICATIONS AND SPECIAL PROVISIONS.
 13. INSURE ALL TRENCHES WITHIN PAVED AREAS TO MEET L.A. COUNTY ROAD DEPT. OR CALIFORNIA STATE HIGHWAY REQUIREMENTS IN ACCORDANCE WITH PERMITS.
 14. FULL COMPLIANCE WITH SECTION 306-1.2.6 OF THE SPECIAL PROVISIONS WILL BE REQUIRED FOR BACKFILL IN STREETS. CERTIFICATION OF BACKFILL COMPACTATION AND SAND EQUIVALENTS BY A QUALIFIED, REGISTERED TESTING LABORATORY SHALL BE PROVIDED BY THE CONTRACTOR PRIOR TO THE ISSUANCE OF A CERTIFICATE OF PARTIAL ACCEPTANCE.
 15. A.B.S. COMPOSITE PIPE SHALL BE BEDDED IN CONFORMANCE WITH THE TABLE IN SECTION 8-5.1 OF PART II OF SPECIAL PROVISIONS.



① 010109 158850 N 11

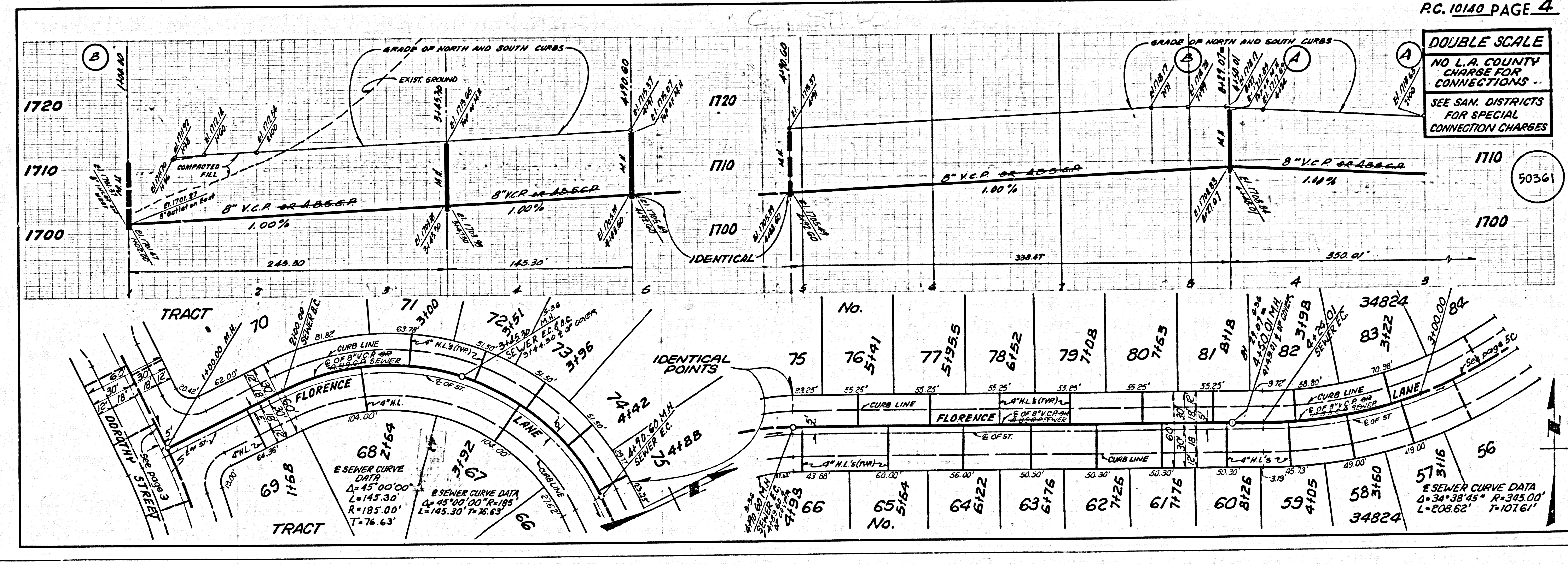
DOUBLE SCALE
NO L.A. COUNTY
CHARGE FOR
CONNECTIONS
SEE SAN. DISTRICTS
FOR SPECIAL
CONNECTION CHARGES

50360

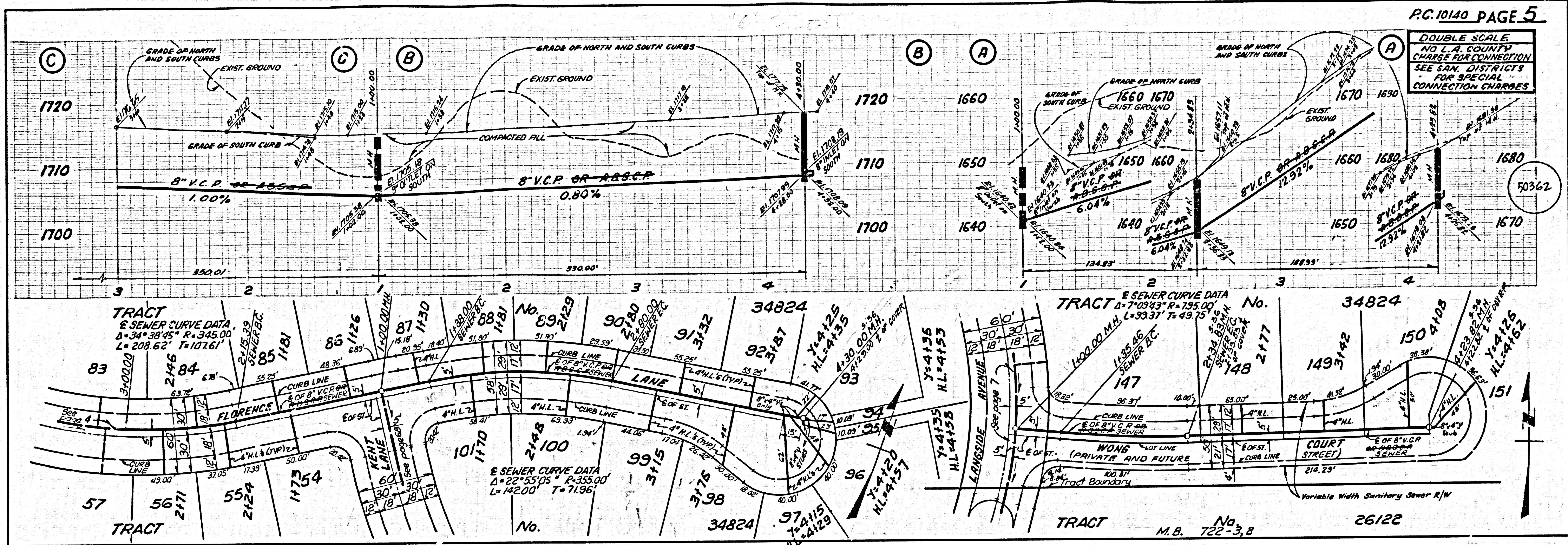


DOUBLE SCALE
NO L.A. COUNTY
CHARGE FOR
CONNECTIONS
SEE SAN. DISTRICTS
FOR SPECIAL
CONNECTION CHARGES

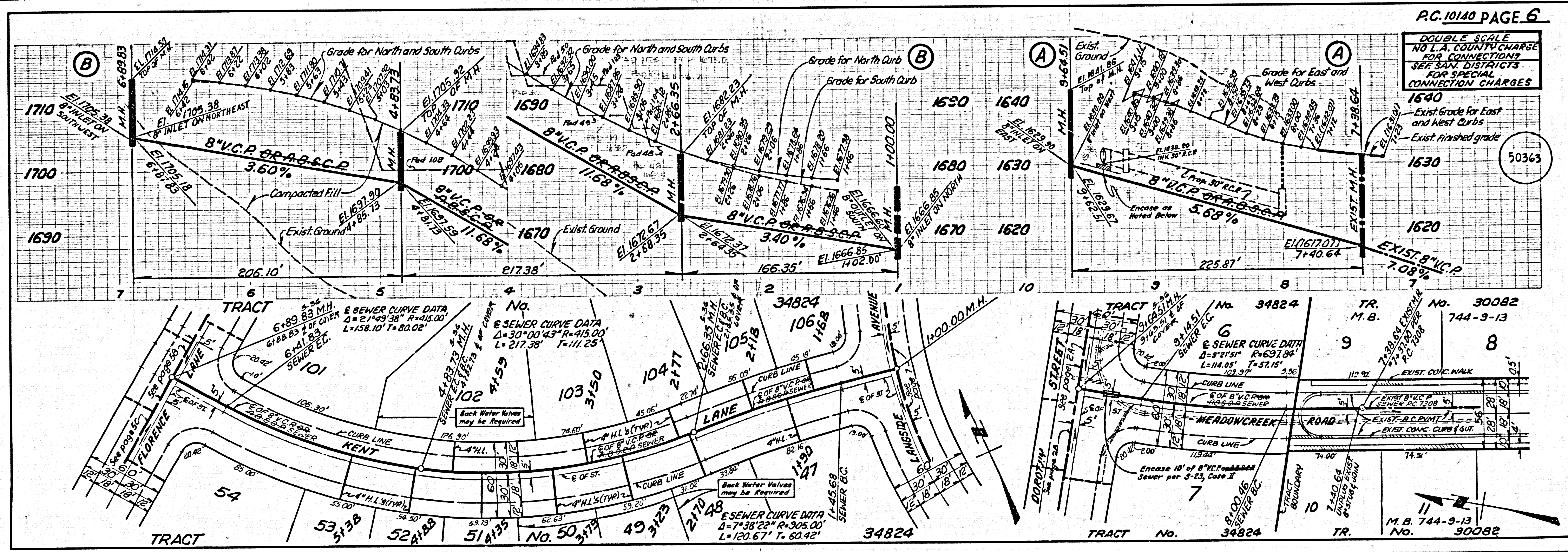
50361



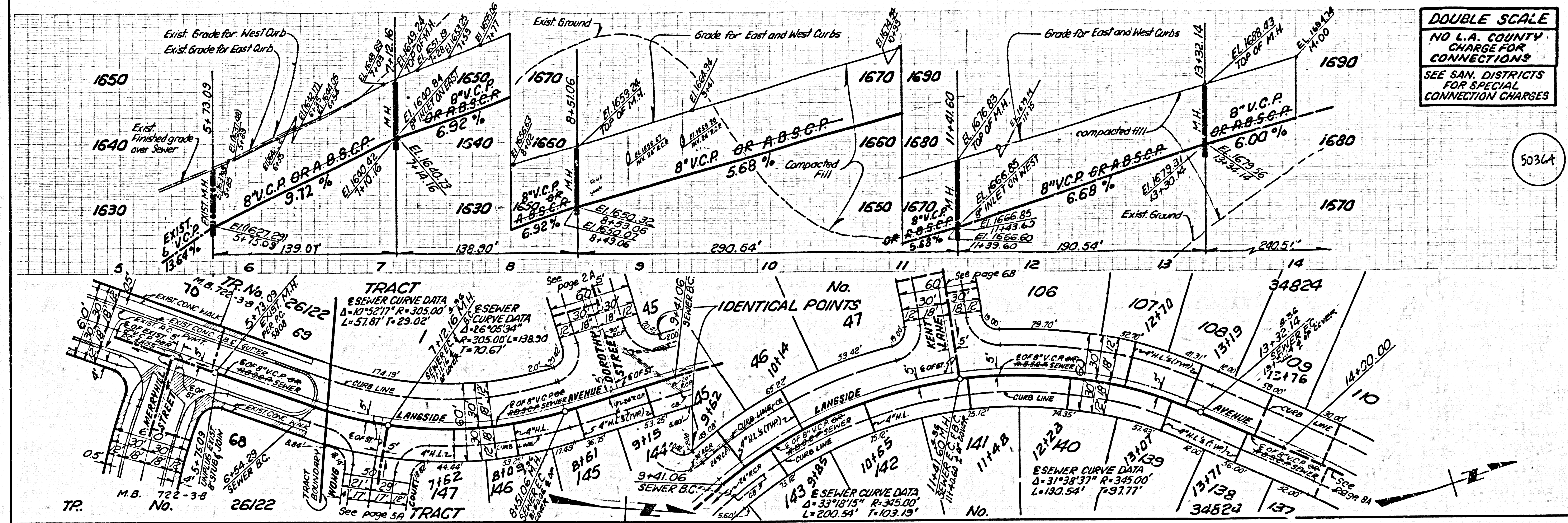
S 0410129 4584E01A1RT



(C) 04101 29 4584E 04.19.97



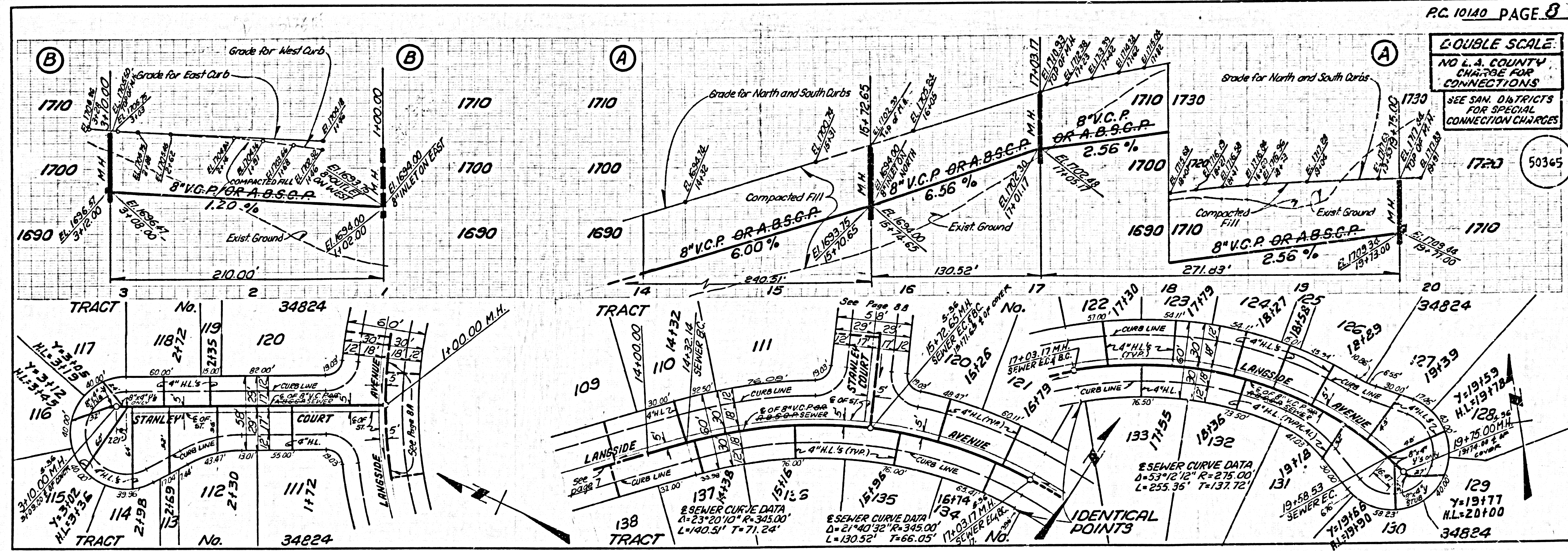
DOUBLE SCALE
NO L.A. COUNTY
CHARGE FOR
CONNECTIONS
SEE SAN. DISTRICTS
FOR SPECIAL
CONNECTION CHARGES



50364

A 0101 29 4585 0140 7

DOUBLE SCALE
NO L.A. COUNTY
CHARGE FOR
CONNECTIONS
SEE SAN. DISTRICTS
FOR SPECIAL
CONNECTION CHARGES



50365

SANITARY SEWERS

TO BE CONSTRUCTED IN

TRACT No. 34824

PRIVATE CONTRACT NO. 10140

INDEX 270 S 137, 270 S 141

C-A-83

4 SHEETS, 8 PAGES

50350

SCALE: VERT. 1"=4' HORIZ. 1"=40' MAY 1983 PREPARED IN THE OFFICES OF ENGINEERING SERVICE CORPORATION 6017 BRISTOL PARKWAY, CULVER CITY, CALIFORNIA 90230 BY: [Signature] REG. C. E. No. 13005

THE FOLLOWING LATEST REVISED STANDARD PLANS ON FILE IN THE OFFICE OF THE COUNTY ENGINEER SHALL APPLY IN THE CONSTRUCTION OF THIS PROJECT.

Table listing standard plans and their page numbers: 1. UNIFORM PUBLIC SANITARY REQUIREMENTS... 2. STANDARD MANHOLE STEP... 3. BEDDING FOR SEWER PIPE... 4. CALLINGS AND DIMENSIONS... 5. WYS ON THE SUPPORT... 6. ALLOWABLE TRENCH WIDTHS... 7. LOCATING MANHOLE FRAMES AND COVERS... 8. HOUSING MANHOLE PRECAST CONCRETE MANHOLES... 9. SPECIAL HOUSE LATERALS...

COUNTY OF LOS ANGELES, CALIFORNIA

STEPHEN J. KOONCE COUNTY ENGINEER WALTER E. GARRISON, CHIEF ENGINEER

APPROVED: [Signature] 8-15-83 [Signature] 8/15/83

CHECKED: Ralph David Hunt 4/24/83

NO. CE. No. 16983

SOUTH CLARITE VALLEY BLDG. DIST. 8-2

B.M.C.L. 5060 ELEV. 1633.683

L & TAG. 15 2602' IN S.C.B. 6 FT. ELD B.C.P. @ S.E. COR. LANGSIDE AVE & MERRYHILL ST. 18 FT. S. 51 FT. ELD @ INT. NEWHALL QUAD. 1978

DOUBLE SCALE

CONSTRUCTION NOTES (CONT.)

- 15. WIRE BRANCHES ONLY MAY BE USED FOR CONNECTIONS TO MAINLINE SEWER IF A.B.S.C.P. IS USED.
16. ALL JOINTS BETWEEN CAST IRON PIPE AND A.S.C.P. SHALL BE MADE WITH APPROVED FITTINGS.
17. FULL COMPLIANCE WITH PART 2 OF SPECIAL PROVISIONS IS REQUIRED FOR THE INSTALLATION OF A B.S. COMPOSITE PIPE AND A B.S. SOLID WALL HOUSE LATERALS.
18. MANHOLE WATER STOP Gaskets AND CLAMPERS ARE REQUIRED FOR THE CONNECTION OF A B.S. COMPOSITE PIPE TO MANHOLE STRUCTURES.
19. A B.S. SOLID WALL PIPE MUST BE USED FOR ALL HOUSE LATERALS CONNECTIONS TO A B.S. COMPOSITE MAIN LINE SEWER PIPE.
20. S-SURFACE DIRECTION COMPLEX MUST BE USED TO ACCOMPLISH RADIUS OF CURVATURE LESS THAN 300'.
21. SPECIAL BACKFILL IN EMBANKMENT CONSTRUCTION.
a. BACKFILL TRENCH AND REPAIR OTHER EARTH SOAS TO ACHIEVE THE NATURAL OR FINISHED GRADES & SLOPES SHOWN ON THE GRADING PLAN APPROVED FOR THIS DEVELOPMENT BY THE BUILDING AND SAFETY DIVISION.
b. ALL BACKFILL AND BORTH REPLACED SHALL BE COMPACTED TO A MINIMUM OF 30% OF MAXIMUM DENSITY PER ASTM STANDARD METHOD OF D698-57T AS MODIFIED. ACCEPTABLE CERTIFICATION OF SUCH CONSTRUCTION SHALL BE SUBMITTED TO THE ENVIRONMENTAL DEVELOPMENT DIVISION.

NO CONNECTION FOR THE DISPOSAL OF INDUSTRIAL WASTES SHALL BE MADE TO SEWERS SHOWN ON THESE DRAWINGS UNTIL A PERMIT FOR INDUSTRIAL WASTEWATER DISCHARGE HAS BEEN ISSUED BY THE SANITATION DISTRICTS FOR SAID CONNECTION.

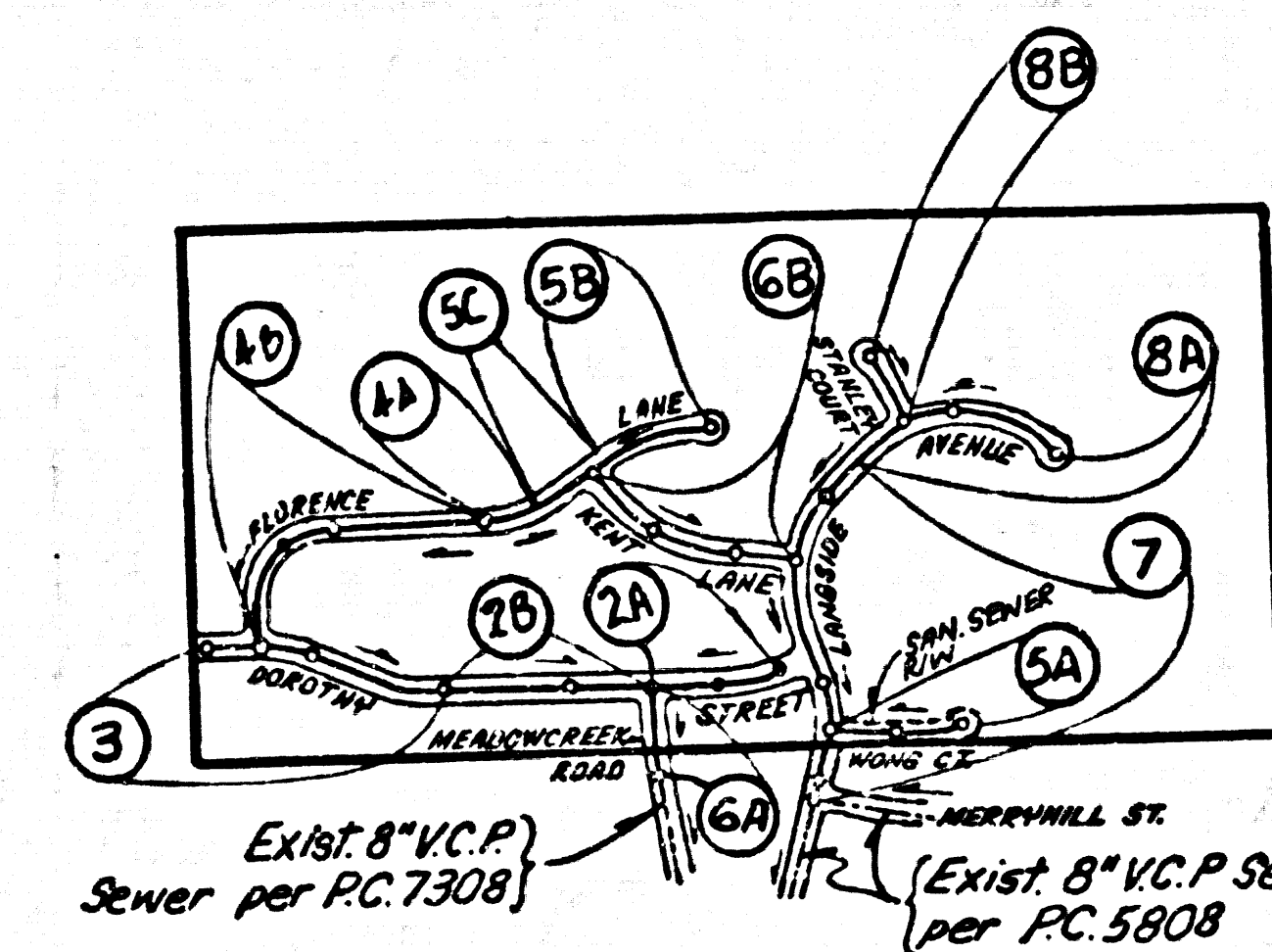
BEFORE BREAKING INTO OR CONSTRUCTION ON A COUNTY SANITATION DISTRICT SEWER MAIN PRIOR TO FINAL ACCEPTANCE OF THE PROJECT, SANITATION DISTRICT INSPECTOR SHALL BE NOTIFIED BY PHONE 343-8405, SO THAT THE REQUIRED INSPECTION CAN BE MADE.

PRIVATE ENGINEER'S NOTICE TO CONTRACTOR

The existence and location of any underground utility pipes or structures shown on these plans are obtained by a search of the available records. To the best of our knowledge there are no existing utilities except as shown on this map.

The Contractor is required to take precautionary measures to protect the utility lines shown and any other lines not of record or not shown on this drawing.

Contractor agrees that he shall assume sole and complete responsibility for job site conditions during the course of construction of this Project, including safety of all persons and property; that this responsibility shall apply continuously and not be limited to normal working hours; and that the Contractor shall defend, indemnify and hold the Owner and the Engineer harmless from any and all liability, real or alleged, in connection with the performance of work on this Project, excepting for liability arising from the sole negligence of the Owner or the Engineer.

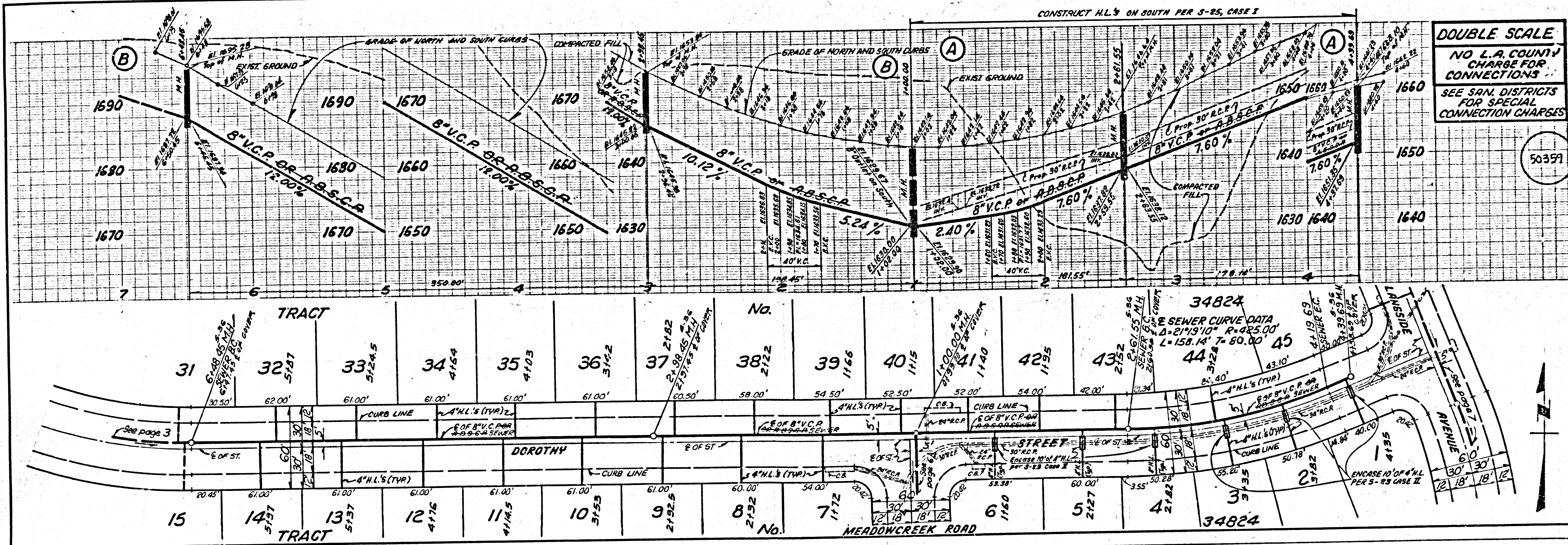


NOTE: NUMBERS ON CIRCLES INDICATE PAGE NUMBERS.

INDEX MAP SCALE: 1"=800'

P.C. No. 10140

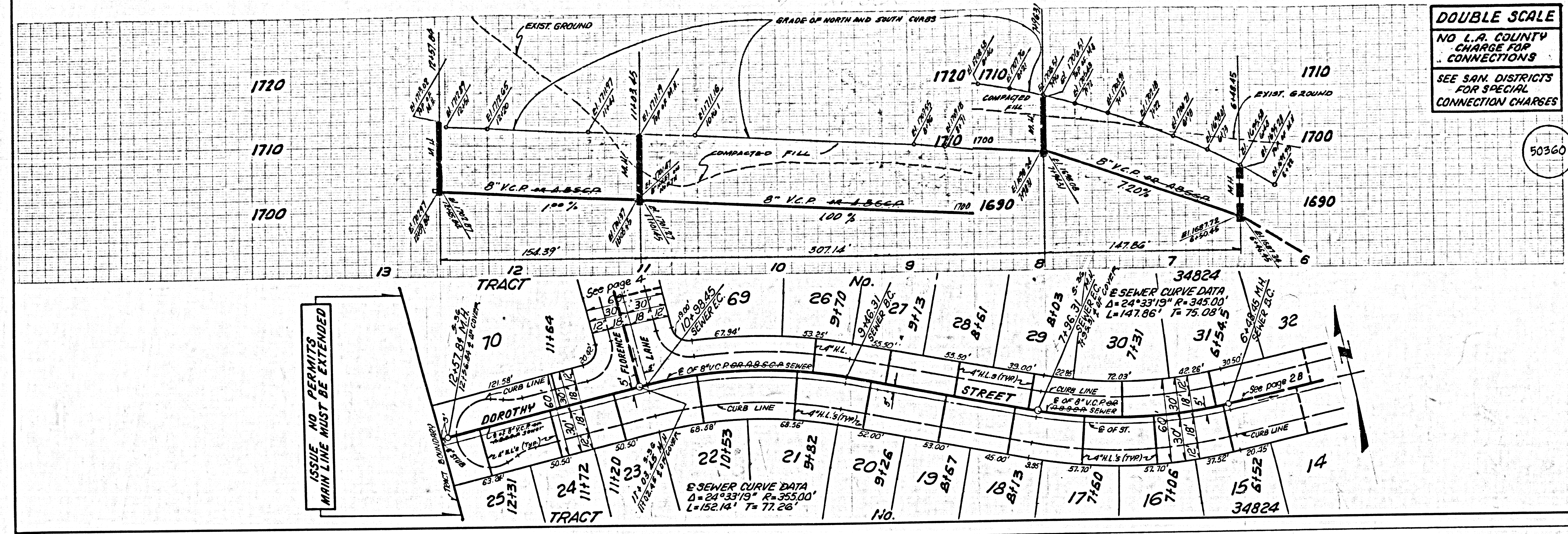
TRACT No. 34824



DOUBLE SCALE NO L.A. COUNTY CHARGE FOR CONNECTIONS SEE SAN. DISTRICTS FOR SPECIAL CONNECTION CHARGES

50351

DOUBLE SCALE
NO L.A. COUNTY
CHARGE FOR
CONNECTIONS
SEE SAN. DISTRICTS
FOR SPECIAL
CONNECTION CHARGES

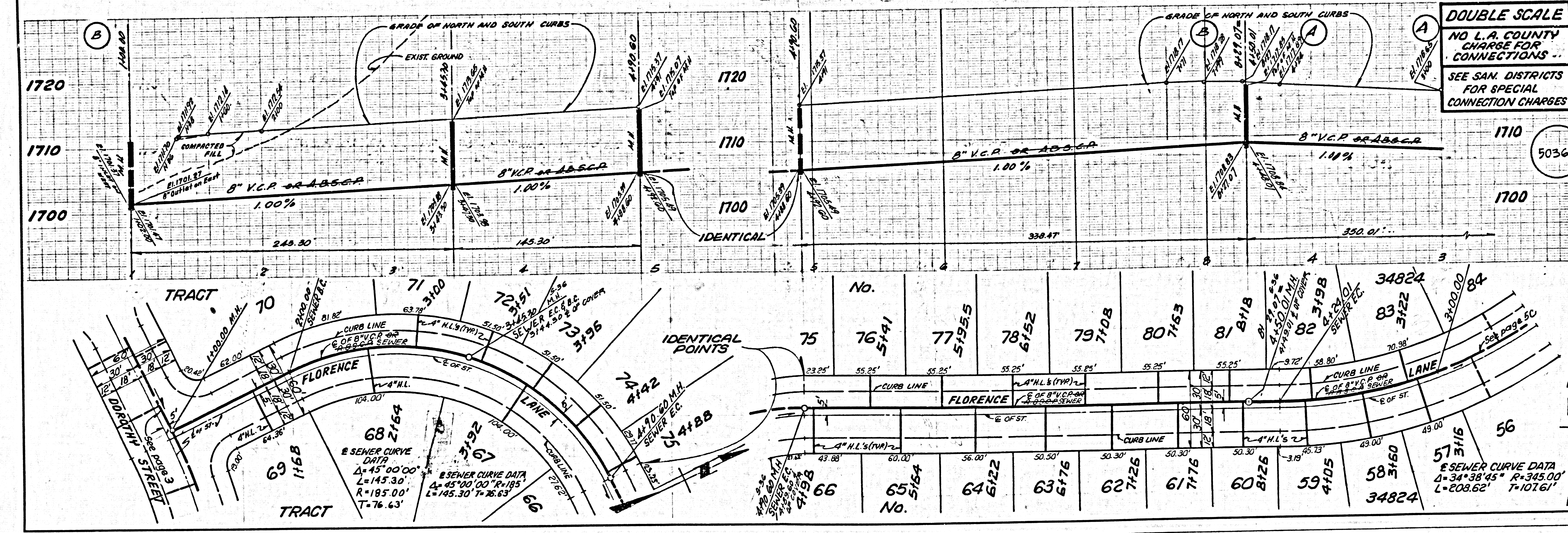


ISSUE NO. PERMITS
MAIN LINE MUST BE EXTENDED

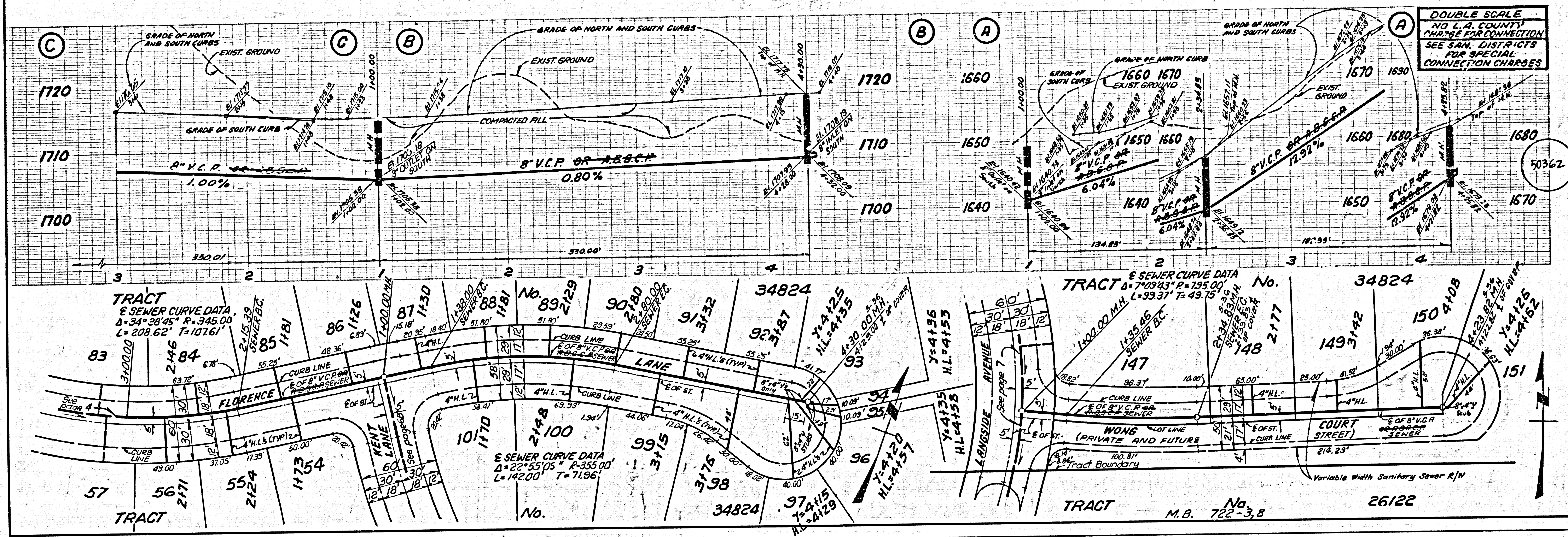
50360

50101 29 ASBAC 09.97

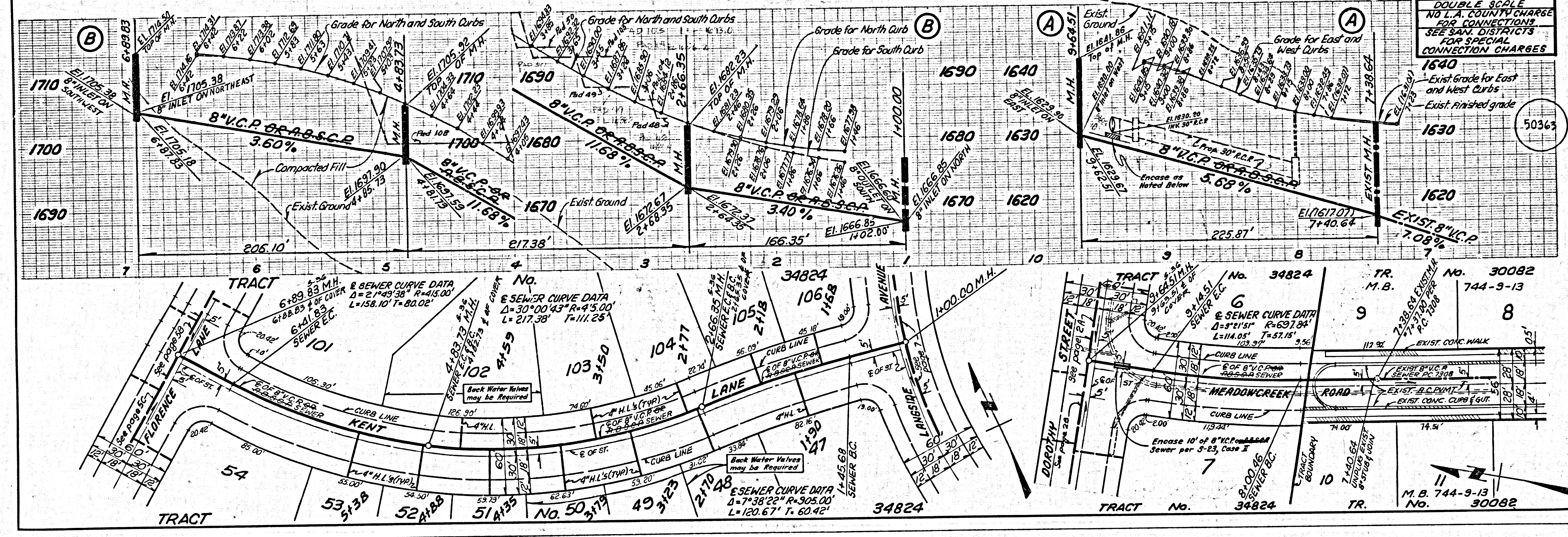
DOUBLE SCALE
NO L.A. COUNTY
CHARGE FOR
CONNECTIONS
SEE SAN. DISTRICTS
FOR SPECIAL
CONNECTION CHARGES



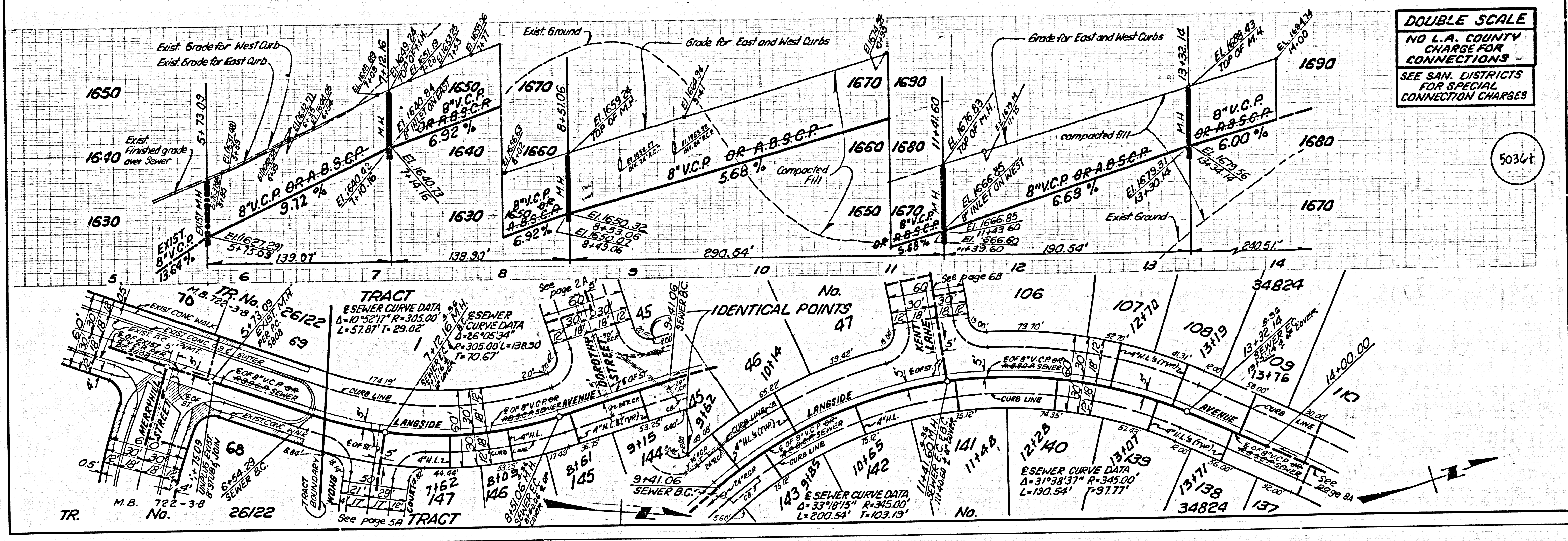
50361



C 0410129 ASSRPE 9M.AT



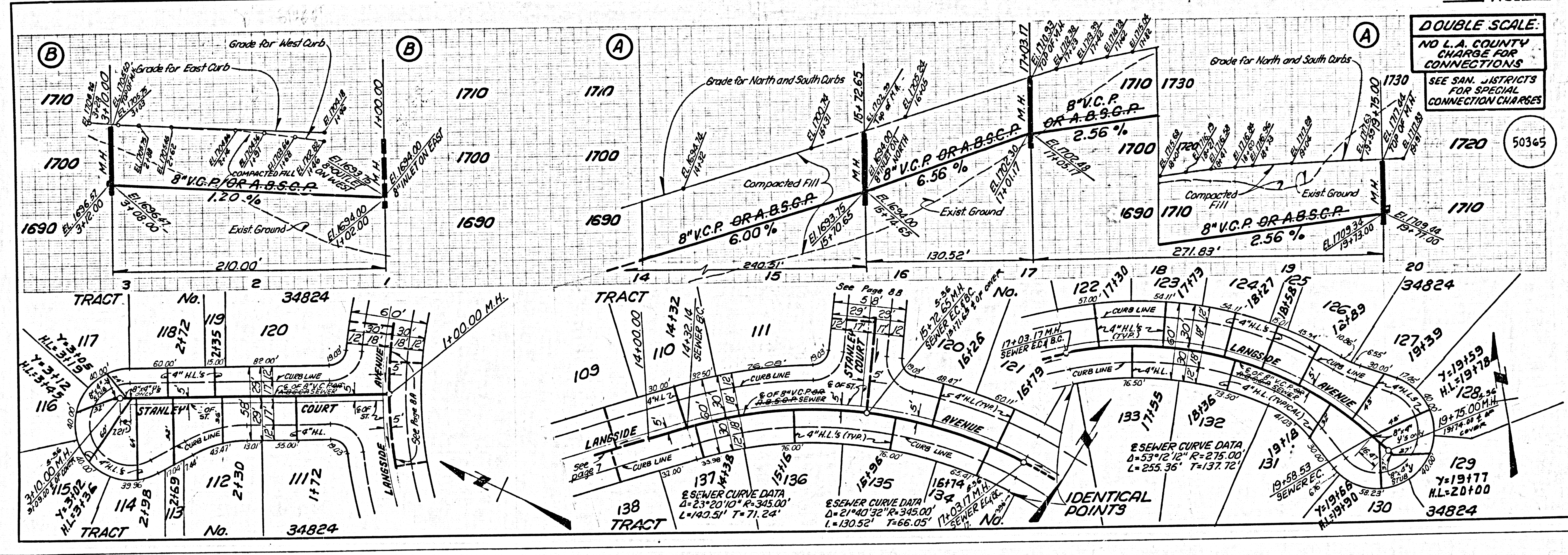
DOUBLE SCALE
NO L.A. COUNTY
CHARGE FOR
CONNECTIONS
SEE SAN. DISTRICTS
FOR SPECIAL
CONNECTION CHARGES



50344

A 0101 09 45826 N 91

DOUBLE SCALE
NO L.A. COUNTY
CHARGE FOR
CONNECTIONS
SEE SAN. DISTRICTS
FOR SPECIAL
CONNECTION CHARGES



50345