

SANITARY SEWERS

TO BE CONSTRUCTED IN

TRACT No 26967  
PRIVATE CONTRACT NO. 10142

A-75  
W.S. 62  
6 SHEETS, 12 PAGES

50738

SCALE: VERT. 1"=4'  
HORIZ. 1"=40'  
APRIL, 1983  
PREPARED IN THE OFFICES OF  
ENGINEERING SERVICE CORPORATION  
4500 WILSON BOULEVARD, SUITE 200, LOS ANGELES, CALIF. 90024  
BY: J. K. ...  
REG. C. E. No. 13095

THE FOLLOWING LATEST REVISED STANDARD PLANS ON FILE IN THE OFFICE OF THE COUNTY ENGINEER SHALL APPLY IN THE CONSTRUCTION OF THIS PROJECT.

MINIMUM PUBLIC SAFETY REQUIREMENTS	6-1
BRICK MANHOLES	6-2
STANDARD MANHOLE STOP	6-7
SEWING FOR STEEL PIPE	6-8
CHASING AND INCASING	6-20
WYE OR TEE SUPPORT	6-26
ALLOWABLE TRENCH WIDTHS	6-28
SOCKING MANHOLE FRAMES AND COVERS	6-29
NON-REINFORCED PRECAST CONCRETE MANHOLES	6-30

COUNTY OF LOS ANGELES, CALIFORNIA  
STEPHEN J. KOONCE, COUNTY ENGINEER  
WALTER E. GARRISON, CHIEF ENGINEER  
APPROVED: [Signature] DATE: 4/19/83  
[Signature] DATE: [ ]  
FOR THE NEWHALL COUNTY WATER DISTRICT  
APPROVED BY: [Signature] DATE: [ ]  
CHIEF ENGINEER & GENERAL MANAGER  
NEWHALL COUNTY WATER DISTRICT

Double Scale

CONSTRUCTION NOTES: (CONT.)

- WYE BRANCHES ONLY MAY BE USED FOR CONNECTIONS TO MAIN LINE SEWER IF A.B.S.C.P. IS USED.
- ALL JOINT BETWEEN CAST IRON PIPE AND A.B.S.C.P. SHALL BE MADE WITH APPROVED FITTINGS.
- FULL COMPLIANCE WITH PART 'K' OF THE SPECIAL PROVISIONS IS REQUIRED FOR THE INSTALLATION OF A.B.S. COMPOSITE PIPE AND A.B.S. SHALL INCLUDE LATERALS.
- MANHOLE WATER STOP GASKETS AND CLAMPS ARE REQUIRED FOR THE CONNECTION OF A.B.S. COMPOSITE PIPE TO MANHOLE STRUCTURES.
- A.B.S. SOLID WALL PIPE MUST BE USED FOR WYE AND HOUSE LATERAL CONNECTIONS TO A.B.S. COMPOSITE MANHOLE SEWER PIPES.
- 3 BARRED DEFLECTION COUPLERS SHALL BE USED TO ACCOMPLISH RADII OF CURVATURE LESS THAN 200'.
- A.B.S. COMPOSITE PIPE SHALL BE BEDDED IN CONFORMANCE WITH THE TABLE IN SECTION B-3.1 OF PART 'K' OF THE SPECIAL PROVISIONS.

NO CONNECTION FOR THE DISPOSAL OF INDUSTRIAL WASTES SHALL BE MADE TO SEWERS SHOWN ON THESE DRAWINGS UNTIL A PERMIT FOR INDUSTRIAL WASTEWATER DISCHARGE HAS BEEN ISSUED BY THE SANITATION DISTRICTS FOR SAID CONNECTION.

BEFORE BREAKING INTO OR CONSTRUCTION ON A COUNTY SANITATION DISTRICT SEWER AND PRIOR TO FINAL ACCEPTANCE OF THE PROJECT, SANITATION DISTRICT INSPECTOR SHALL BE NOTIFIED BY PHONE 962-8603, SO THAT REQUIRED INSPECTION CAN BE MADE.

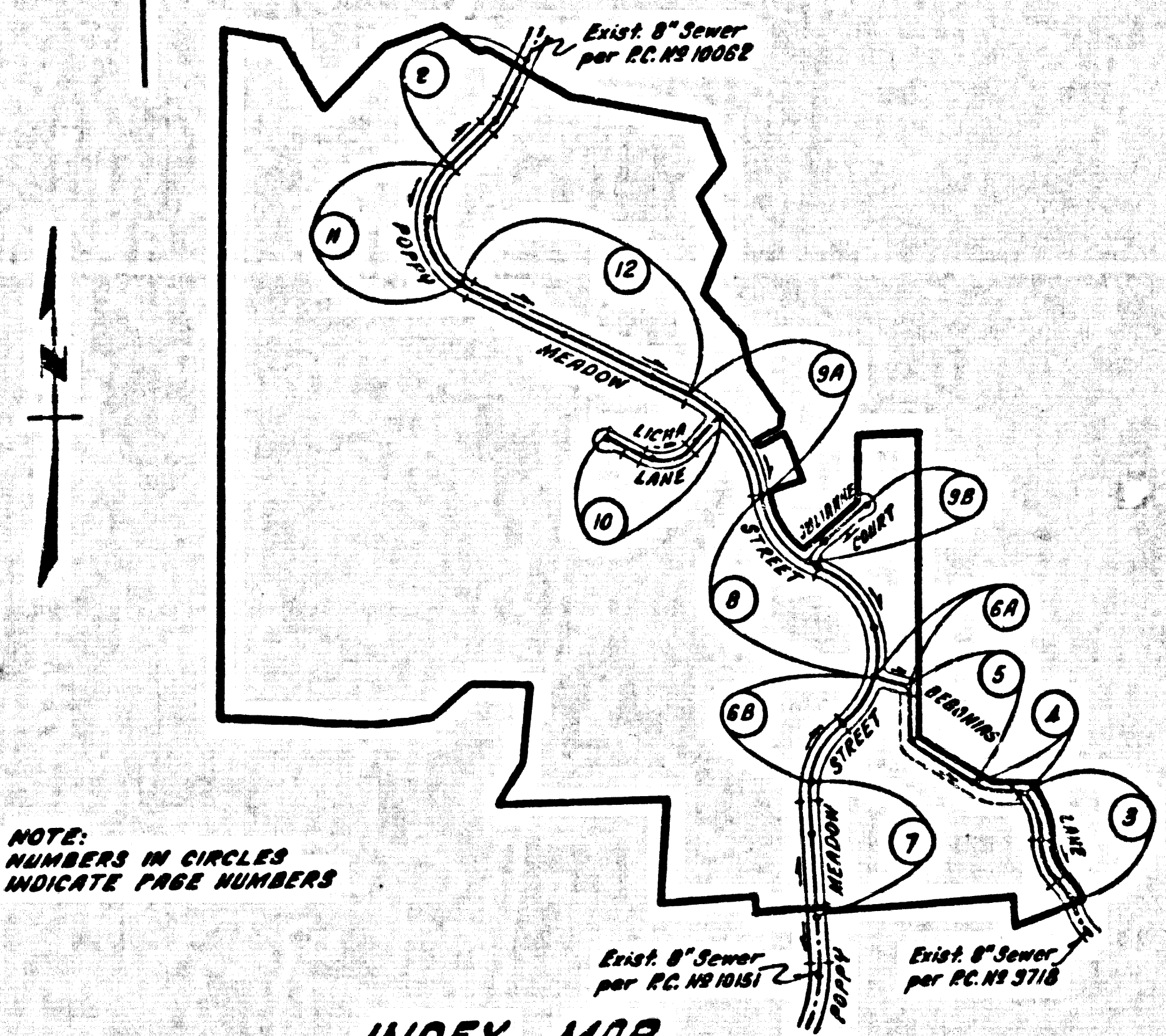
GENERAL NOTES:

- ELEVATIONS ARE IN FEET ABOVE U.S.C. & G.S. SEA LEVEL DATUM OF 1929.
- NO REVISIONS SHALL BE MADE IN THESE PLANS WITHOUT THE APPROVAL OF THE COUNTY ENGINEER.
- NO REPRESENTATIVE OF THE COUNTY ENGINEER WILL SURVEY OR LAY OUT ANY PORTION OF THE WORK.
- GRADES TO WHICH THIS IMPROVEMENT IS TO BE CONSTRUCTED ARE SHOWN ON PLANS AND PROFILES. GRADE POINTS FOR TOP OF CURBS, CENTER LINE OF STREETS, OR CENTER LINE OF ALLEYS ARE SHOWN BY CIRCLES ON PROFILES AT ALL POINTS BETWEEN DESIGNATED POINTS THE GRADE SHALL BE ESTABLISHED SO AS TO CONFORM TO A STRAIGHT LINE DRAWN BETWEEN SAID DESIGNATED POINTS.
- THE PRIVATE ENGINEER SHALL FURNISH THE COUNTY ENGINEER WITH GRADE SHEETS AND STATIONING FOR ALL HOUSE LATERALS AND "T" OR "Y" BRANCHES AND SHALL PROVIDE STAKES FOR THEM AT THEIR PROPER LOCATIONS WITH STATIONING PLAINLY MARKED. ALL HOUSE LATERALS SHALL BE CONSTRUCTED IN A STRAIGHT ALIGNMENT AT RIGHT ANGLES FROM THE MAIN LINE SEWER EXCEPT AS SHOWN ON THE PLANS. HOUSE LATERALS FROM CHIMNEYS SHALL NOT MAKE AN ANGLE OF LESS THAN 45° WITH THE MAIN LINE SEWER. ANY CHANGE IN ALIGNMENT SHALL BE REQUESTED IN WRITING BY THE PRIVATE ENGINEER.
- THE PRIVATE ENGINEER SHALL FURNISH THE HOUSE LATERAL DEPTH AT THE PROPERTY LINE BELOW THE TOP OF CURB ELEVATION FOR EACH HOUSE LATERAL. ON THE GRADE SHEET.
- BEFORE WORK CAN BE STARTED, THE CONTRACTOR MUST OBTAIN A PERMIT TO EXCAVATE IN COUNTY STREETS FROM THE L.A. COUNTY ROAD DEPT., DISTRICT OFFICE NO. 1, AND PAY A FEE TO THE COUNTY ENGINEER, 800 S. VERMONT AVENUE, LOS ANGELES, CA 90008, TO COVER THE COST OF CONSTRUCTION INSPECTION AND RECORD PLANS FROM THE STATE OF CALIFORNIA, DIVISION OF HIGHWAYS, 120 SOUTH SPRING STREET, LOS ANGELES, CALIFORNIA.
- IF WORK IS TO BE DONE IN A STATE HIGHWAY, A PERMIT MUST BE OBTAINED FROM THE STATE OF CALIFORNIA, DIVISION OF HIGHWAYS, 120 SOUTH SPRING STREET, LOS ANGELES, CALIFORNIA.
- APPROVAL OF THIS PLAN BY THE COUNTY OF LOS ANGELES DOES NOT CONSTITUTE A REPRESENTATION AS TO THE ACCURACY OF THE LOCATION OF OR THE EXISTENCE OR NON-EXISTENCE OF ANY UNDERGROUND UTILITY PIPE, OR STRUCTURE WITHIN THE LIMITS OF THIS PROJECT. THIS NOTE APPLIES TO ALL PAGES.
- REFER TO SECTION 1.16.1 OF THE STANDARD SPECIFICATIONS, REGARDING SAFETY ORDERS.
- PRIOR TO THE ISSUANCE OF THE REQUIRED SEWER CONSTRUCTION PERMIT, THE CONTRACTOR SHALL OBTAIN AND FILE WITH THE COUNTY ENGINEER COPIES OF A PERMIT TO EXCAVATE IN COUNTY STREETS FROM THE LOS ANGELES COUNTY ROAD DEPARTMENT, A PERMIT FOR EXCAVATION AND TRENCHES FROM THE STATE OF CALIFORNIA, DIVISION OF INDUSTRIAL SAFETY AND A CERTIFICATE OF WORKER'S COMPENSATION INSURANCE WITH THE DEPARTMENT OF COUNTY ENGINEER, 800 SOUTH VERMONT, RM. 201, LOS ANGELES, CALIFORNIA 90008, NAMED AS THE CERTIFICATE HOLDER TO BE NOTIFIED 30 DAYS PRIOR TO CANCELLATION OF POLICY.

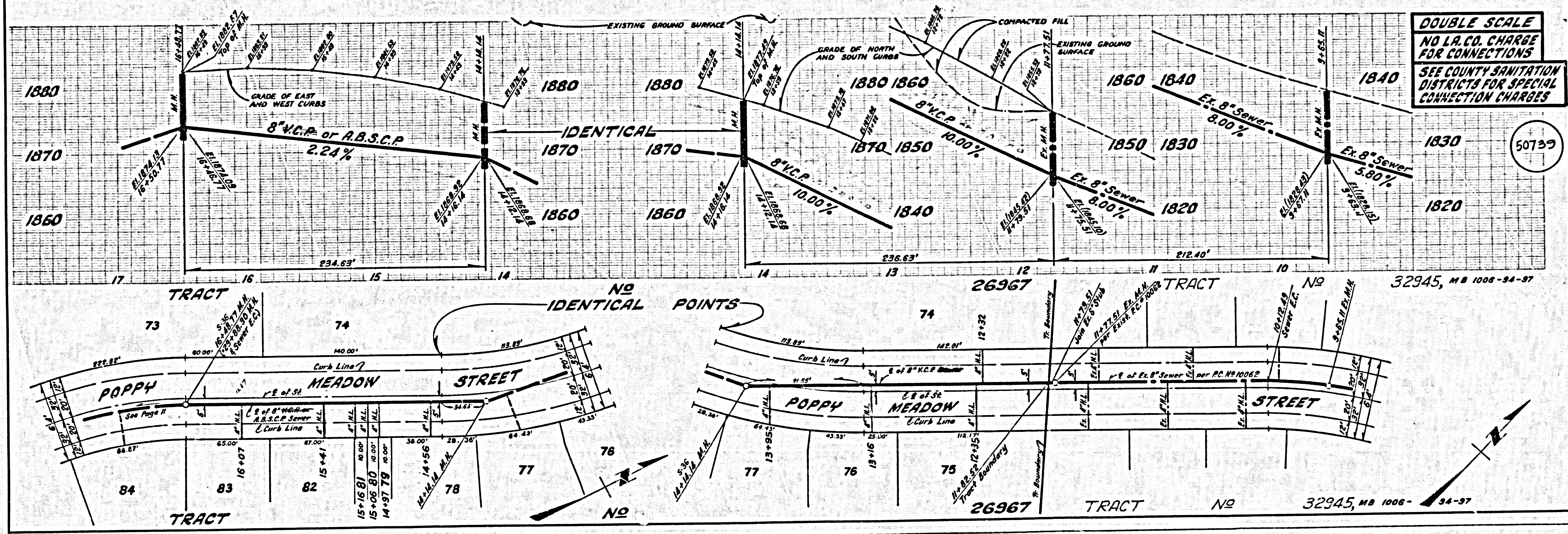
CONSTRUCTION NOTES:

- WORK SHALL BE CONSTRUCTED ACCORDING TO THE STANDARD SPECIFICATIONS FOR PUBLIC WORKS CONSTRUCTION (SEE SECTION 11000) AND COUNTY ENGINEER SPECIAL PROVISIONS FOR THE CONSTRUCTION OF SANITARY SEWERS DATED SEPTEMBER 25, 1978 AND SHALL BE PROSECUTED ONLY IN THE PRESENCE OF THE COUNTY ENGINEER.
- THE CONTRACTOR SHALL NOTIFY THE ENVIRONMENTAL DEVELOPMENT DIVISION BY TELEPHONE, 726-2100, AT LEAST TWENTY-FOUR HOURS BEFORE STARTING ANY WORK UNDER THE CONTRACT.
- HOUSE LATERALS TO BE CONSTRUCTED WITH INVERTS AT PROPERTY LINE 8 FEET BELOW CURB GRADE EXCEPT AS NOTED.
- WYE OR TEE BRANCHES MAY BE USED FOR CONNECTIONS TO MAINLINE SEWERS EXCEPT AS NOTED.
- ALL STRUCTURES SHALL BE EITHER BRICK MANHOLES PER 6-2 OR PRECAST CONCRETE MANHOLES PER 6-29 EXCEPT AS NOTED.
- PROVIDE STAKES ON THE PROPERTY LINE OR PROPERTY LINES PRODUCED AT RIGHT ANGLES TO THE SEWER LINE AT THE CENTER LINE OF EACH MANHOLE.
- MANHOLE TOPS IN UNIMPROVED RIGHTS OF WAY TO BE 8 INCHES ABOVE FINISHED GRADE.
- WITHELD CLAY PIPE JOINTS SHALL BE TYPE "B" OR "C" PER STANDARD SPECIFICATIONS SECTION 280-5.
- IF A POWER POLE IS WITHIN THREE FEET OF THE SEWER, THE SEWER SHALL BE ENCASED, PER 6-28, CASE 2, TWO FEET ON EACH SIDE FROM THE POINT OF INTERFERENCE.
- IF DURING THE COURSE OF CONSTRUCTION IT IS DETERMINED THAT THERE IS LESS THAN FOUR FEET OF COVER OVER THE TOP OF A MAIN LINE OR HOUSE LATERAL SEWER WHICH IS NOT INDICATED ON THE PLANS, THE PIPE SHALL BE ENCASED PER 6-28, CASE 2 UNLESS OTHERWISE APPROVED BY THE COUNTY ENGINEER.
- ALL JOINTS BETWEEN CAST IRON PIPE AND WITHELD CLAY PIPE SHALL BE MADE WITH A RUBBER SLURRY JOINT, TYPE "C" OR "D", (WITH RUBBER) IN ACCORDANCE WITH STANDARD SPECIFICATIONS, SECTION 280-5.
- SEWERS TO BE TRENCH FOR LAYOUT PER SECTION 280-1.1 OF THE STANDARD SPECIFICATIONS AND SPECIAL PROVISIONS.
- REINFORCE ALL TRENCHES WITHIN PAVED AREAS TO MEET L.A. COUNTY ROAD DEPT. OR CALIFORNIA STATE HIGHWAY REQUIREMENTS IN ACCORDANCE WITH PERMITS.
- FULL COMPLIANCE WITH SECTION 280-1.2 OF THE SPECIAL PROVISIONS WILL BE REQUIRED FOR BACKFILL IN STREETS, CURBS, AND SIDEWALKS. BACKFILLING AND SAND ROUNDPOINTS BY A QUALIFIED, REGISTERED TESTING LABORATORY SHALL BE PROVIDED BY THE PERMITTEE PRIOR TO THE ISSUANCE OF A CERTIFICATE OF PARTIAL ACCEPTANCE.
- SPECIAL BACKFILL IN BASEMENT CONSTRUCTION: (A) BACKFILL TRENCH AND REPLACE OTHER EARTH SO AS TO ACHIEVE THE NATURAL OR FINISHED GRADES AND SLOPES SHOWN ON THE GRADING PLAN APPROVED FOR THIS DEVELOPMENT BY THE BUILDING AND SAFETY DIVISION. (B) ALL BACKFILL AND SAND ROUNDPPOINTS SHALL BE COMPACTED TO A MINIMUM OF 98% OF MAXIMUM DENSITY PER A.S.T.M. METHOD OF TEST D1557 BY MOOPING. ACCEPTABLE CERTIFICATION OF SUCH COMPACTION SHALL BE SUBMITTED TO THE ENVIRONMENTAL DEVELOPMENT DIVISION.

B.M. CL 5003 ELEV. 1605.585  
FROM TAG IN 1/2" CB 2" WY BOR @  
WY 1/4" COE. SOLEDAO CH RD @ FLOWER PARK  
DR 42' NO 4' 48" W C/L INT.  
NEWHALL QUAD. 1978



INDEX MAP  
P.C. No 10142  
Scale: 1" = 600'  
TRACT No 26967

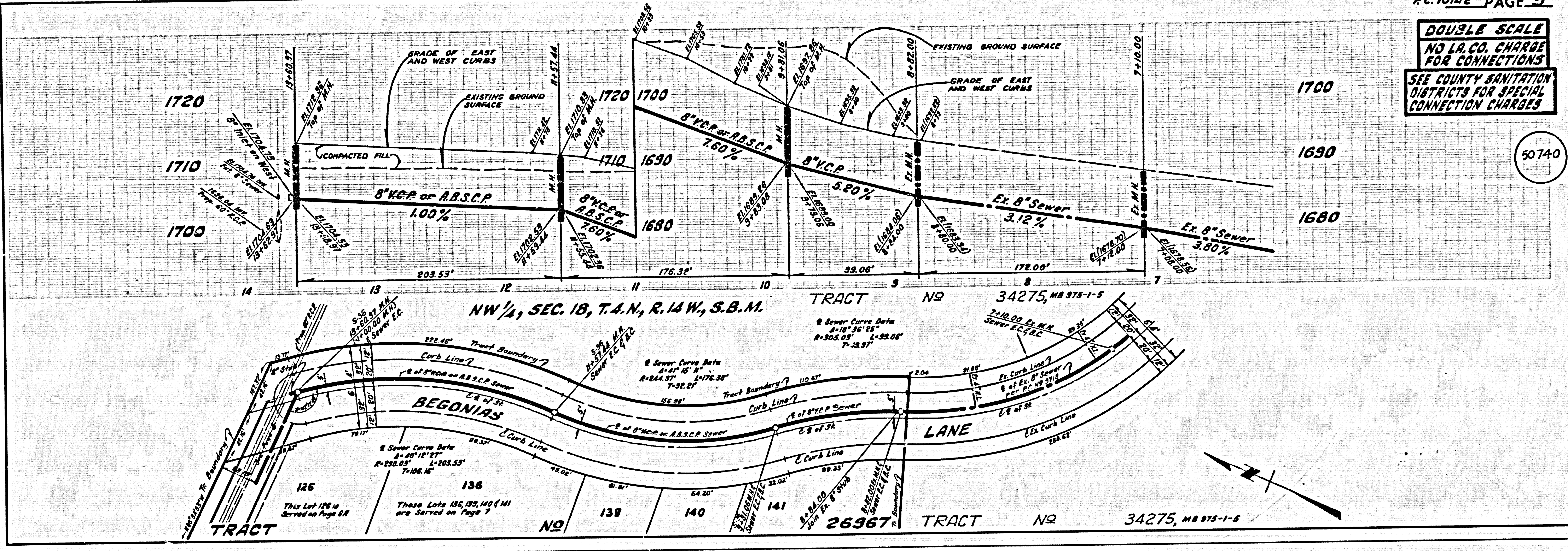




S 54101 09 TAREAS ON TRACT

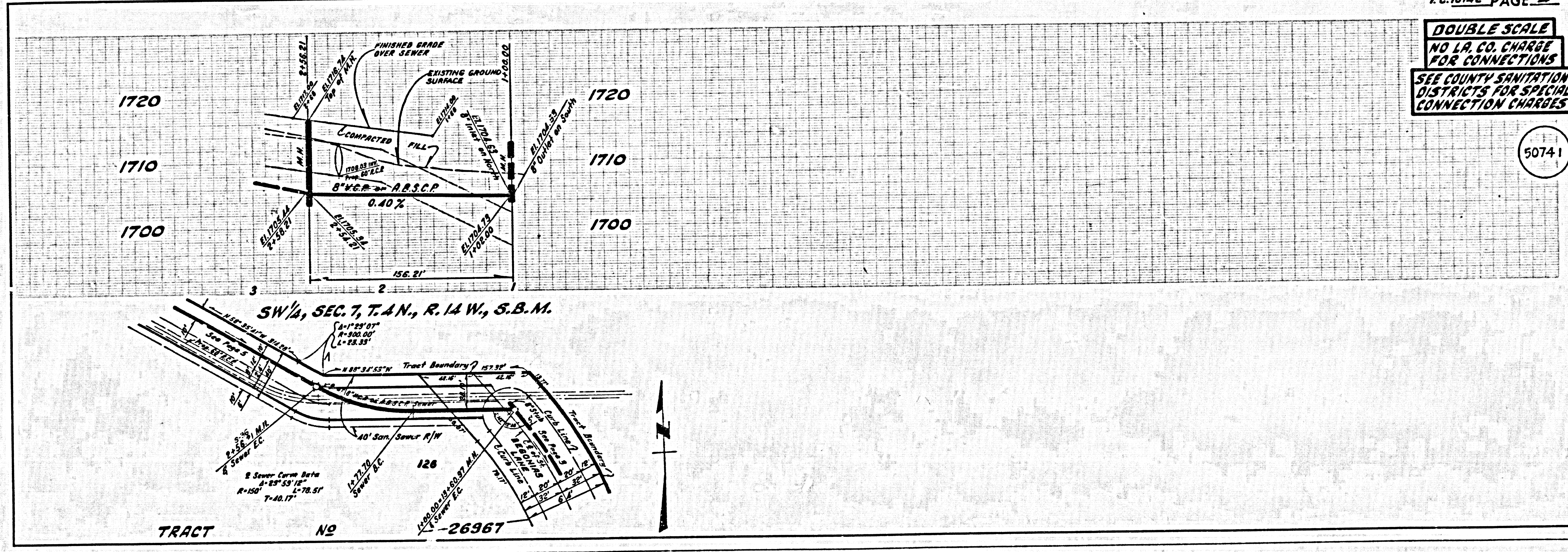
DOUBLE SCALE  
NO L.A. CO. CHARGE  
FOR CONNECTIONS  
SEE COUNTY SANITATION  
DISTRICTS FOR SPECIAL  
CONNECTION CHARGES

50740



DOUBLE SCALE  
NO L.A. CO. CHARGE  
FOR CONNECTIONS  
SEE COUNTY SANITATION  
DISTRICTS FOR SPECIAL  
CONNECTION CHARGES

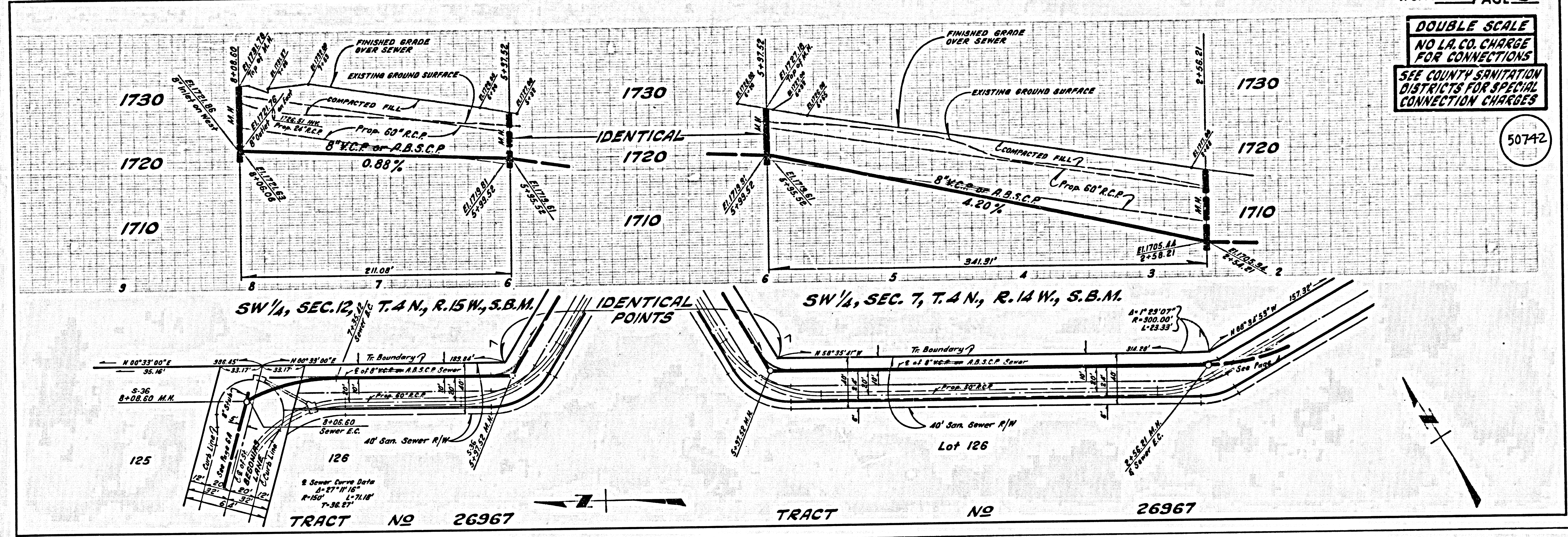
50741





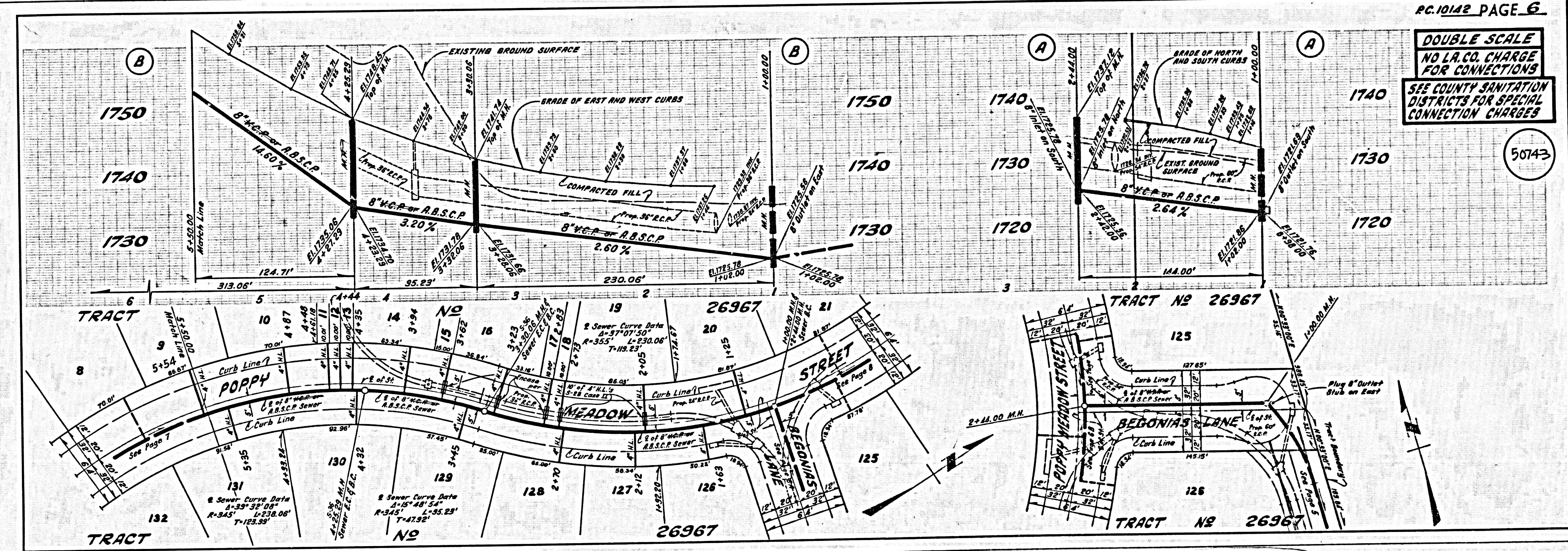
DOUBLE SCALE  
NO L.A. CO. CHARGE  
FOR CONNECTIONS  
SEE COUNTY SANITATION  
DISTRICTS FOR SPECIAL  
CONNECTION CHARGES

50742



DOUBLE SCALE  
NO L.A. CO. CHARGE  
FOR CONNECTIONS  
SEE COUNTY SANITATION  
DISTRICTS FOR SPECIAL  
CONNECTION CHARGES

50743



3 SA 101 29 TABS ON TRACT

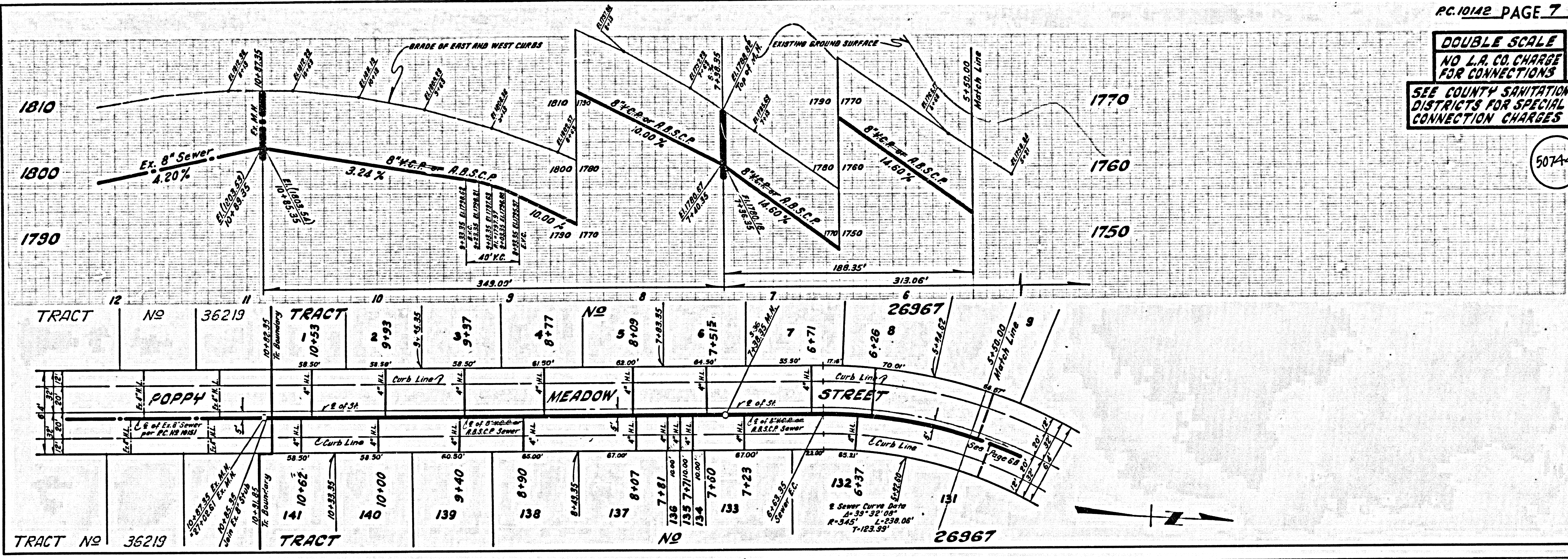


4

SA 101 29 7885 ON TRACT

DOUBLE SCALE  
NO L.A. CO. CHARGE  
FOR CONNECTIONS  
SEE COUNTY SANITATION  
DISTRICTS FOR SPECIAL  
CONNECTION CHARGES

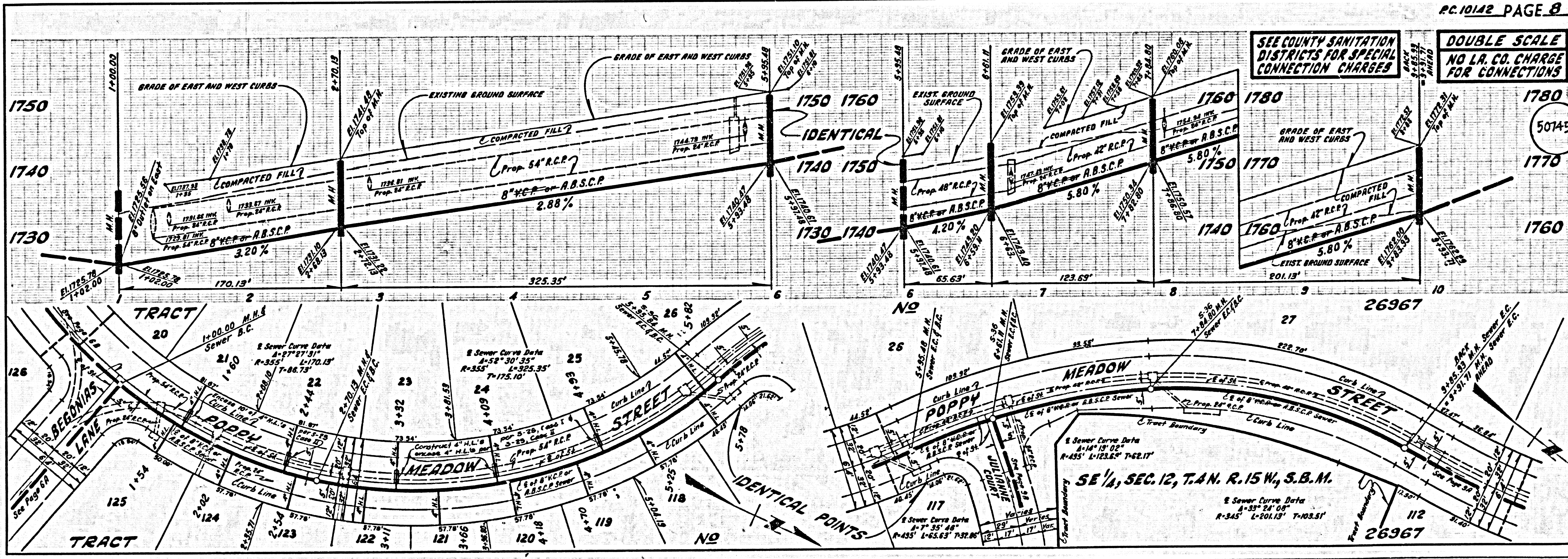
50744



SEE COUNTY SANITATION  
DISTRICTS FOR SPECIAL  
CONNECTION CHARGES

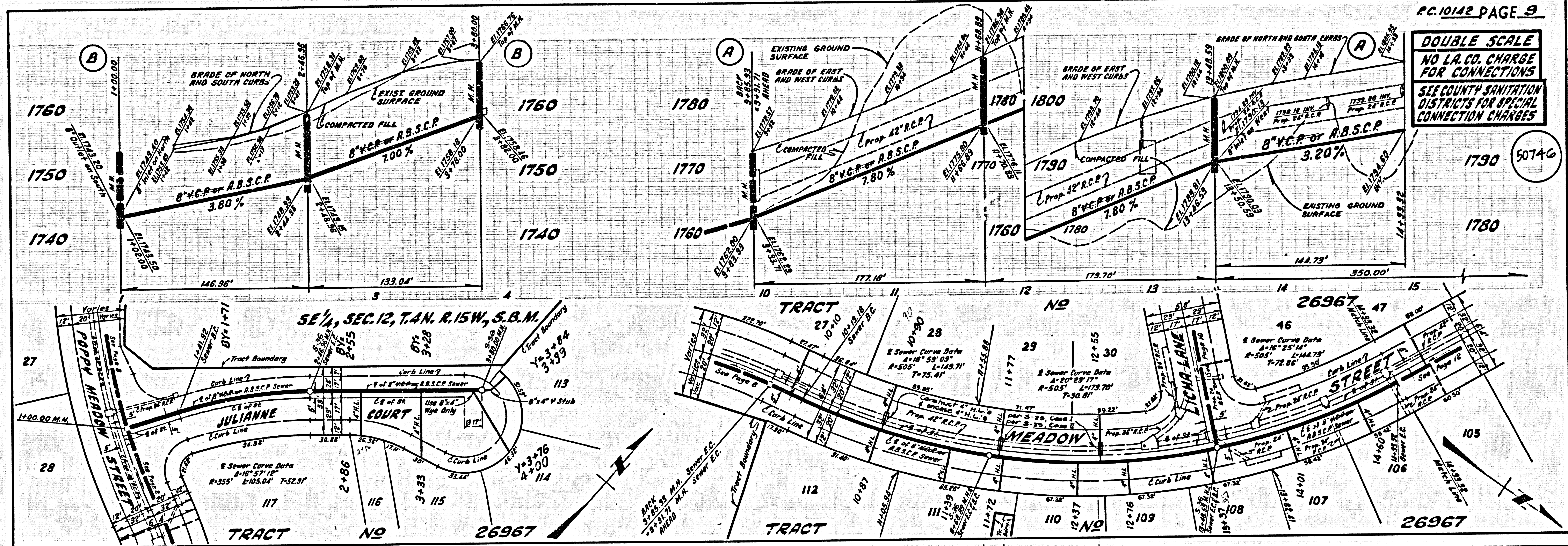
DOUBLE SCALE  
NO L.A. CO. CHARGE  
FOR CONNECTIONS

50745



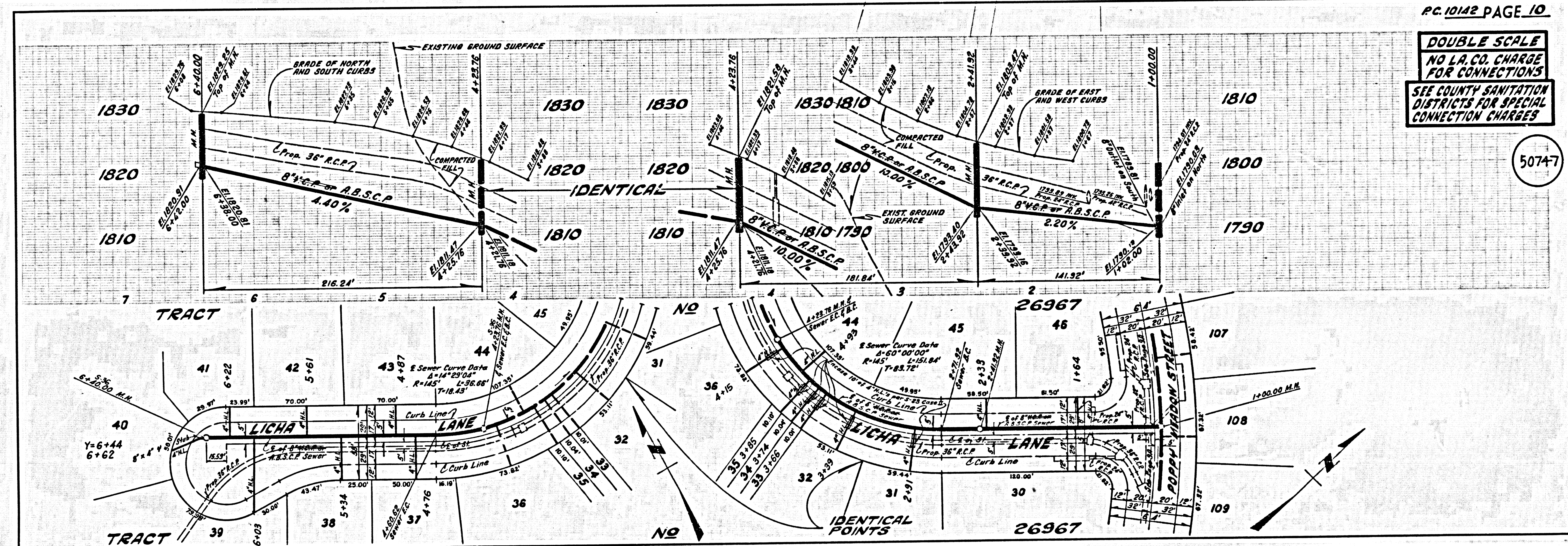


DOUBLE SCALE  
NO L.A. CO. CHARGE  
FOR CONNECTIONS  
SEE COUNTY SANITATION  
DISTRICTS FOR SPECIAL  
CONNECTION CHARGES



50746

DOUBLE SCALE  
NO L.A. CO. CHARGE  
FOR CONNECTIONS  
SEE COUNTY SANITATION  
DISTRICTS FOR SPECIAL  
CONNECTION CHARGES



50747

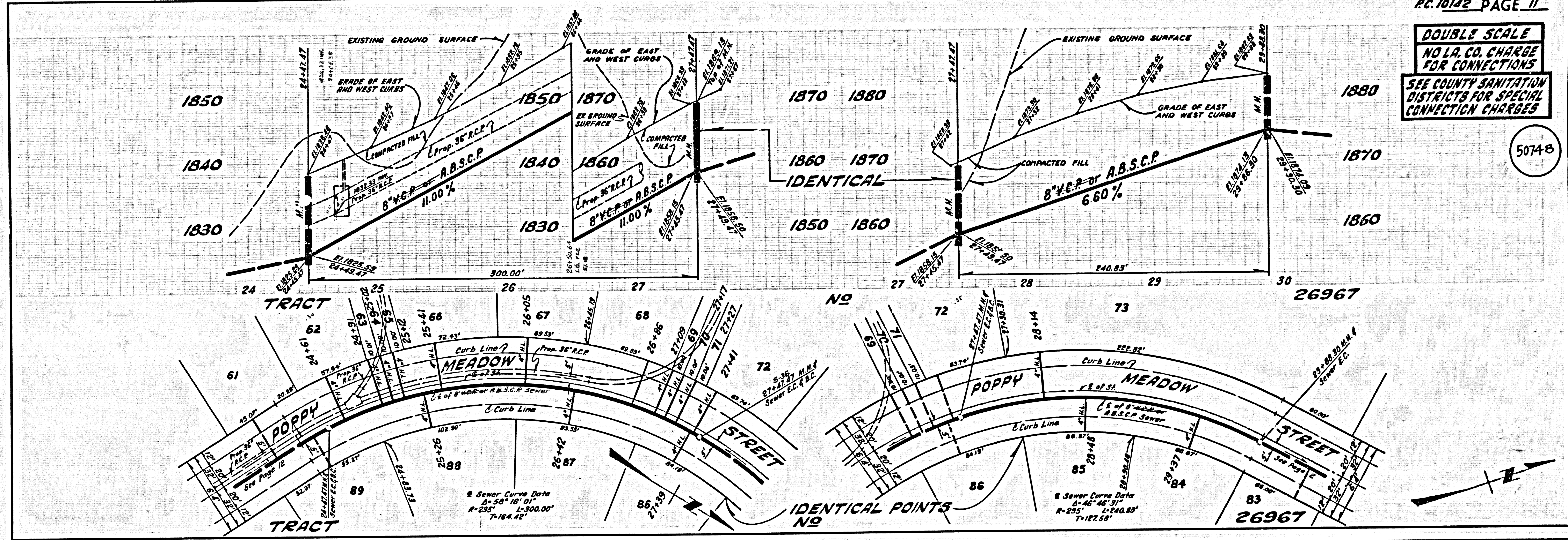
PC 10142 PAGE 9

PC 10142 PAGE 10



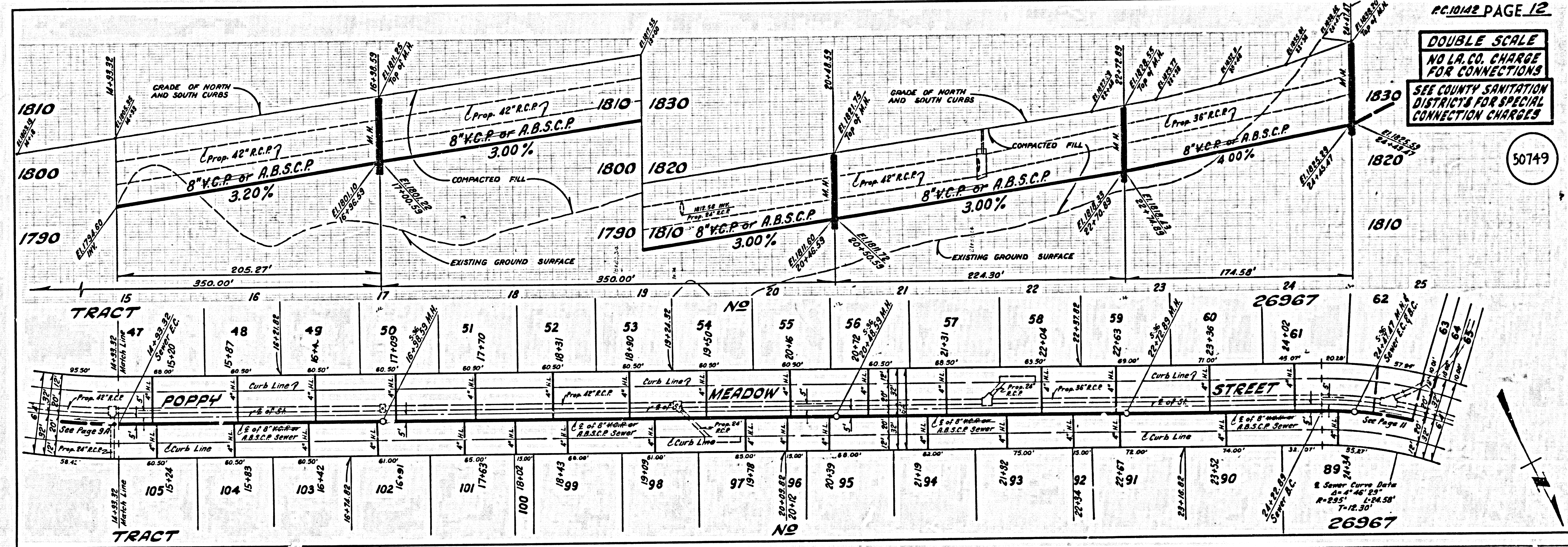
DOUBLE SCALE  
NO L.A. CO. CHARGE  
FOR CONNECTIONS  
SEE COUNTY SANITATION  
DISTRICTS FOR SPECIAL  
CONNECTION CHARGES

50748



DOUBLE SCALE  
NO L.A. CO. CHARGE  
FOR CONNECTIONS  
SEE COUNTY SANITATION  
DISTRICTS FOR SPECIAL  
CONNECTION CHARGES

50749



54101 2A 78885 ON TRACT