

TO BE CONSTRUCTED IN
TRACT No. 35014
PRIVATE CONTRACT NO. 10145

W.S. 38-D4
2 SHEETS, 4 PAGES
50123

SCALE: VERT. 1"=4'
HORIZ. 1"=40'
MAY, 1963
PREPARED IN THE OFFICES OF
KEMMERER ENGINEERING CO., INC.
6703 S. PAINTER AVE. WHITTIER CA 90608 (213) 678-0791
BY: Robert R. Flores
REG. C. E. No. 11349

THE FOLLOWING LATEST REVISED STANDARD PLANS ON FILE IN THE OFFICE OF THE COUNTY ENGINEER SHALL APPLY IN THE CONSTRUCTION OF THIS PROJECT.

LOGS	5-1
MINIMUM PUBLIC SAFETY REQUIREMENTS	5-2
SEWER MANHOLES	5-3
STANDARD MANHOLE STEP	5-7
BEDDING FOR SEWER PIPE	5-8
CRACKING AND DISASSEMBLY	5-9
PIPE ON THE SUPPORT	5-10
ALLOWABLE TRENCH WIDTHS	5-11
SOCKING MANHOLE FRAME AND COVER	5-12
NON-REINFORCED PERCAST CONCRETE MANHOLES	5-13
REINFORCED PERCAST CONCRETE MANHOLES	5-14

COUNTY OF LOS ANGELES, CALIFORNIA
STEPHEN J. KOONCE, COUNTY ENGINEER WALTER E. GARRISON, CHIEF ENGINEER
APPROVED: *Sam H. Wells* 5/1/63 APPROVED: *Walter E. Garrison* 5/1/63
CHECKED: *Ralph D. Saut* 5/1/63
REG. C. E. NO. 16883
LA PUENTE BLDG. DIST. 200

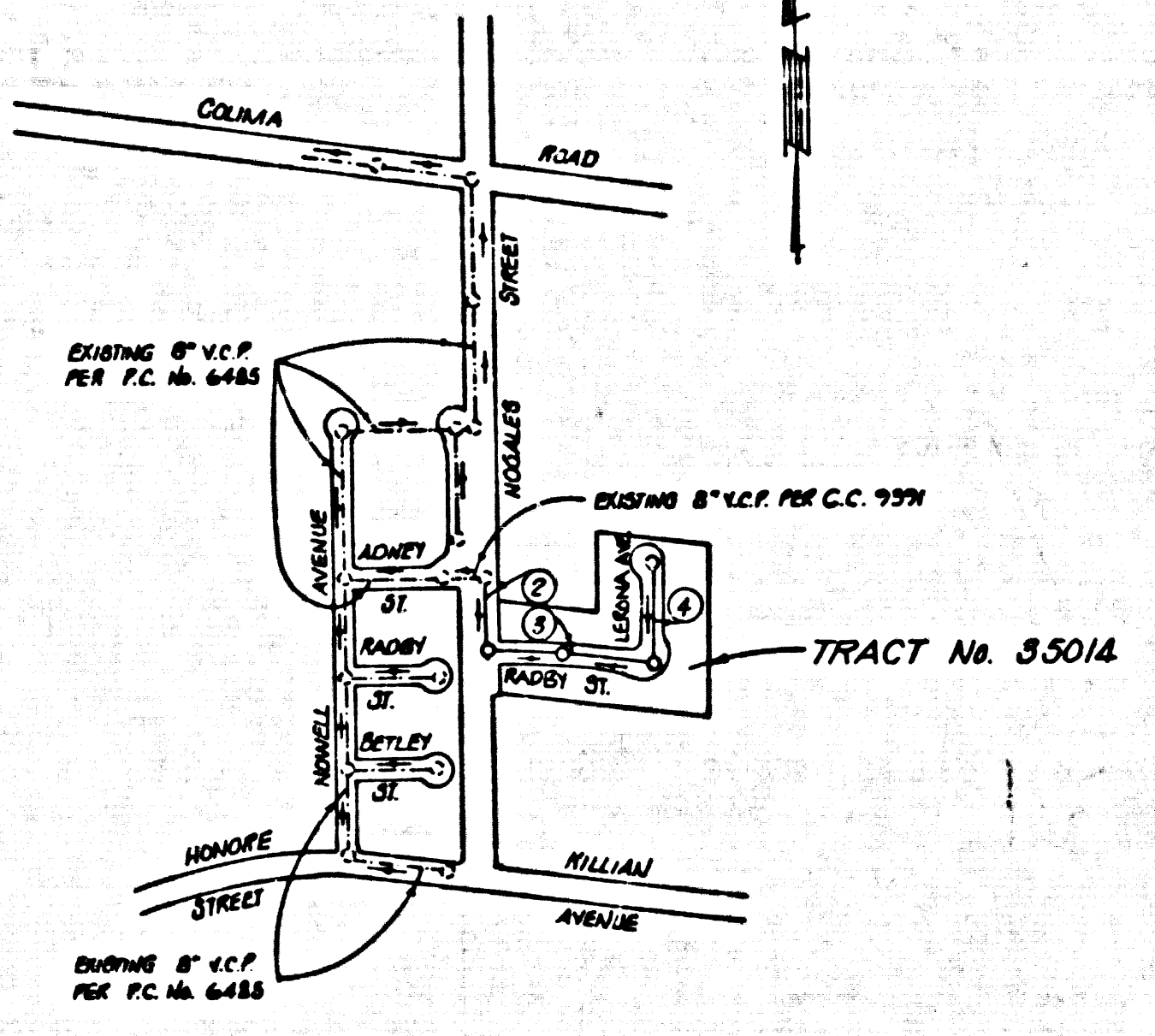
PRIVATE ENGINEER'S NOTICE TO CONTRACTORS
THE EXISTENCE AND APPROXIMATE LOCATIONS OF UNDERGROUND UTILITIES OF STRUCTURES EXCEPT AS SHOWN ON THESE PLANS WERE DETERMINED BY A SEARCH OF AVAILABLE PUBLIC RECORDS TO THE BEST OF OUR KNOWLEDGE THERE ARE NO EXISTING UNDERGROUND UTILITIES OF STRUCTURES EXCEPT AS SHOWN ON THESE PLANS
THE CONTRACTOR IS REQUIRED TO TAKE DUE PRECAUTIONARY MEASURES TO PROTECT THE UTILITIES OF STRUCTURES SHOWN AND ANY OTHER UTILITIES OF STRUCTURES NOT SHOWN ON THESE PLANS.
Robert R. Flores 11349
ROBERT R. FLORES R.C.E. No.

GENERAL NOTES:
1. ELEVATIONS ARE IN FEET ABOVE U.S.C. & G.S. SEA LEVEL DATUM OF 1929.
2. NO REVISIONS SHALL BE MADE IN THESE PLANS WITHOUT THE APPROVAL OF THE COUNTY ENGINEER.
3. NO REPRESENTATIVE OF THE COUNTY ENGINEER WILL SURVEY OR LAY OUT ANY PORTION OF THE WORK.
4. GRADES TO WHICH THIS IMPROVEMENT IS TO BE CONSTRUCTED ARE SHOWN ON PLANS AND PROFILE GRADE POINTS FOR TOP OF CURBS, CENTER LINE OF STREETS, OR CENTER LINE OF ALLEYS ARE SHOWN BY CIRCLES ON PROFILES, AT ALL POINTS BETWEEN DESIGNATED POINTS THE GRADE SHALL BE ESTABLISHED SO AS TO CONFORM TO A STRAIGHT LINE DRAWN BETWEEN SAID DESIGNATED POINTS.
5. THE PRIVATE ENGINEER SHALL FURNISH THE COUNTY ENGINEER WITH GRADE SHEETS AND STATIONING FOR ALL HOUSE LATERALS AND "T" OR "T" BRANCHES AND SHALL PROVIDE STAKES FOR THEM AT THEIR PROPER LOCATIONS WITH STATIONING PLAINLY MARKED. ALL HOUSE LATERALS SHALL BE CONSTRUCTED IN A STRAIGHT ALIGNMENT AT RIGHT ANGLES FROM THE MAIN LINE SEWER EXCEPT AS SHOWN ON THE PLANS. HOUSE LATERALS FROM CHIMNEYS SHALL NOT HAVE AN ANGLE OF LESS THAN 45° WITH THE MAIN LINE SEWER. ANY CHANGE IN ALIGNMENT SHALL BE REQUESTED IN WRITING BY THE PRIVATE ENGINEER.
6. THE PRIVATE ENGINEER SHALL FURNISH THE HOUSE LATERAL DEPTH AT THE PROPERTY LINE BELOW THE TOP OF CURB ELEVATION FOR EACH HOUSE LATERAL ON THE GRADE SHEET.
7. BEFORE WORK CAN BE STARTED, THE CONTRACTOR MUST OBTAIN A PERMIT TO EXCAVATE IN COUNTY STREETS FROM THE L.A. COUNTY ROAD DEPT., DISTRICT OFFICE NO. 1, AND PAY A FEE TO THE COUNTY ENGINEER, 302 E. BOWEN AVE., S.W. 50445 REGIONAL OFFICE, TO COVER THE COST OF CONSTRUCTION INSPECTION AND RECORD PLANS.
8. IF WORK IS TO BE DONE IN A STATE HIGHWAY, A PERMIT MUST BE OBTAINED FROM THE STATE OF CALIFORNIA, DIVISION OF HIGHWAYS, 120 SOUTH SPRING STREET, SAC ANGELES, CALIFORNIA.
9. APPROVAL OF THIS PLAN BY THE COUNTY OF LOS ANGELES DOES NOT CONSTITUTE A REPRESENTATION AS TO THE ACCURACY OF THE LOCATION OR THE EXISTENCE OR NON-EXISTENCE OF ANY UNDERGROUND UTILITY PIPE, OR STRUCTURE WITHIN THE LIMITS OF THIS PROJECT. THIS NOTE APPLIES TO ALL PAGES.
10. REFER TO SECTION 2-104 OF THE STANDARD SPECIFICATIONS, REGARDING SAFETY ORDERS.
11. PERMITS, IN THE FORMS AS THE REQUIRED REVIEW, CONFIRMATION, PERMIT, THE CONTRACTOR SHALL OBTAIN AND FILE WITH THE COUNTY ENGINEER, OFFICE OF A PERMIT TO EXCAVATE IN COUNTY STREETS FROM THE L.A. COUNTY ROAD DEPARTMENT, A PERMIT FOR EXCAVATION AND TRENCH FROM THE DEPT. OF CALIFORNIA, DIVISION OF INDUSTRIAL SAFETY AND A CERTIFICATE OF WORKERS COMPENSATION INSURANCE WITH THE DEPARTMENT OF COUNTY ENGINEER, 550 S. VERNON AVE., LOS ANGELES, CALIFORNIA 90010, FROM A LICENSED INSURANCE COMPANY. THE CONTRACTOR SHALL BE NOTIFIED BY THE COUNTY ENGINEER OF THE CANCELLATION OF PERMIT.

Contractor agrees that he shall assume sole and complete responsibility for job site conditions during the course of construction of this Project, including safety of all persons and property; that this requirement shall apply continuously and not be limited to normal working hours; and that the Contractor shall defend, indemnify and hold the Owner and the Engineer harmless from any and all liability, real or alleged, in connection with the performance of work on this Project, excepting for liability arising from the sole negligence of the Owner or the Engineer.



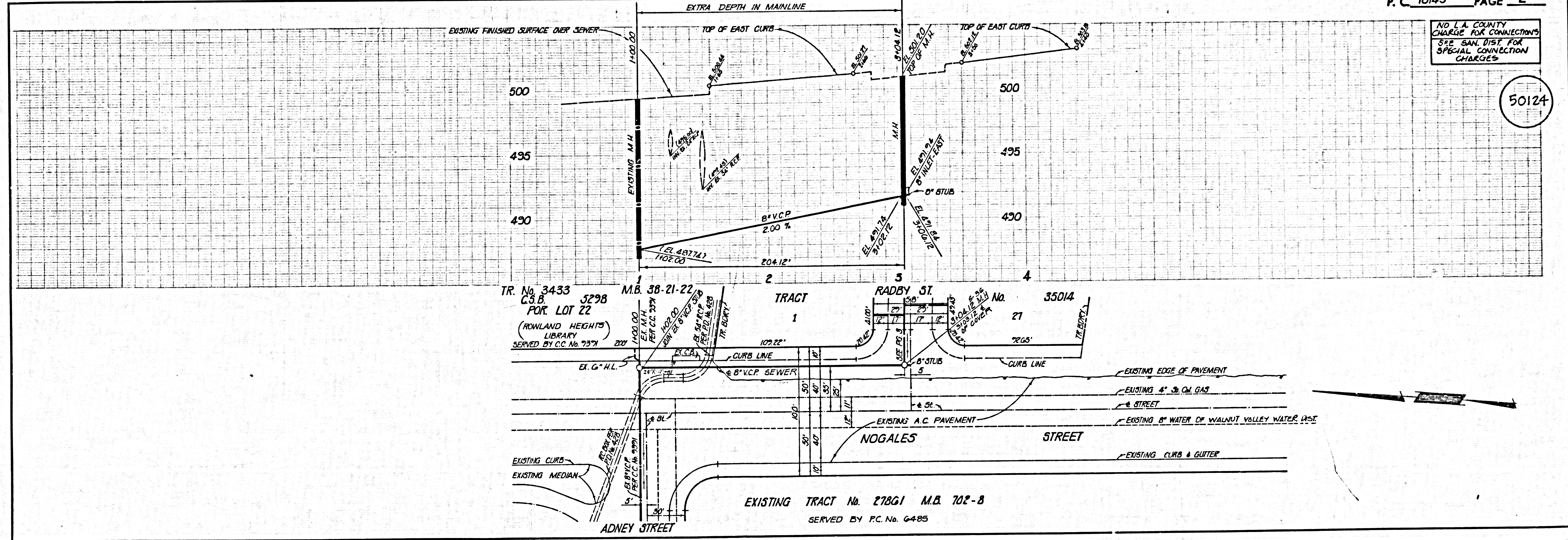
B.M. C.G. 3886 ELEV. 300.822
1. & R.C.E. TAG IN C.R. 1 R. N. of B.C.R. 52 FL.
3. AND 38 FL. N. of 4 INTERSECTION
NOGALES STREET AND ADNEY STREET (MMD 7643)
OTTERBEIN QUAD. 19 75 ADJ.



CONSTRUCTION NOTES - (CONT'D.)
16. FULL COMPLIANCE WITH PART III OF THE SPECIAL PROVISIONS IS REQUIRED FOR THE INSTALLATION OF A.S.S. COMPOSITE PIPE.
17. MANHOLE WATER STOP GASKETS AND CLAMPS ARE REQUIRED FOR THE CONNECTION OF A.S.S. COMPOSITE PIPE TO MANHOLE STRUCTURES.
18. A.S.S. SOLID WALL PIPE MUST BE USED FOR WYE AND HOUSE LATERAL CONNECTIONS TO A.S.S. COMPOSITE MAIN LINE SEWER PIPE.
19. A.S.S. COMPOSITE PIPE SHALL BE BEDDED IN CONFORMANCE WITH THE TABLE IN SECTION B-11 OF PART III OF THE SPECIAL PROVISIONS.
20. 5 DEGREE DEFLECTION COMPLETS SHALL BE USED TO ACCOMMODATE RADII OF CURVATURE LESS THAN 350'.

NO CONNECTION FOR THE DISPOSAL OF INDUSTRIAL WASTES SHALL BE MADE TO SEWERS SHOWN ON THESE DRAWINGS UNLESS A PERMIT FOR INDUSTRIAL WASTE WATER DISCHARGE HAS BEEN ISSUED BY THE SANITATION DISTRICTS FOR SAID CONNECTION.
BEFORE BREAKING INTO OR CONSTRUCTION ON A COUNTY SANITATION DISTRICT SEWER AND PRIOR TO FINAL ACCEPTANCE OF THE PROJECT SANITATION DISTRICT INSPECTOR SHALL BE NOTIFIED BY PHONE 362-8006, SO THAT REQUIRED INSPECTION CAN BE MADE.

INDEX MAP
NUMBERS IN CIRCLES INDICATE PAGE NUMBERS
TRACT No. 35014 P.C. No. 10145
SCALE: 1"=600'

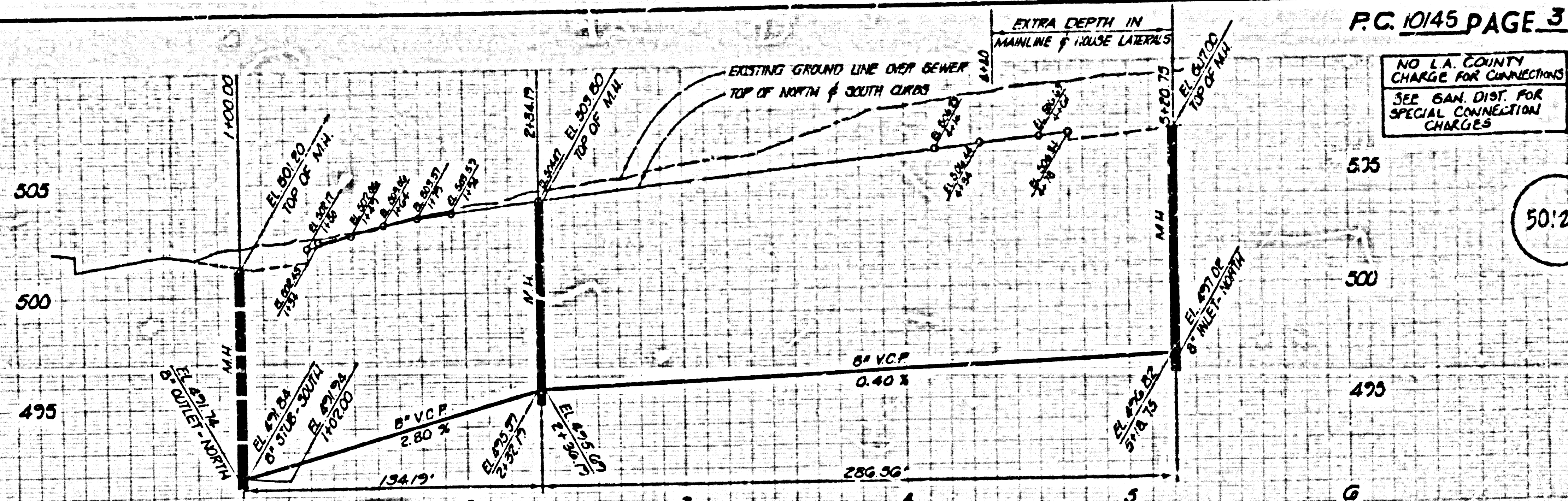


NO L.A. COUNTY CHARGE FOR CONNECTIONS SEE SAN. DIST. FOR SPECIAL CONNECTION CHARGES

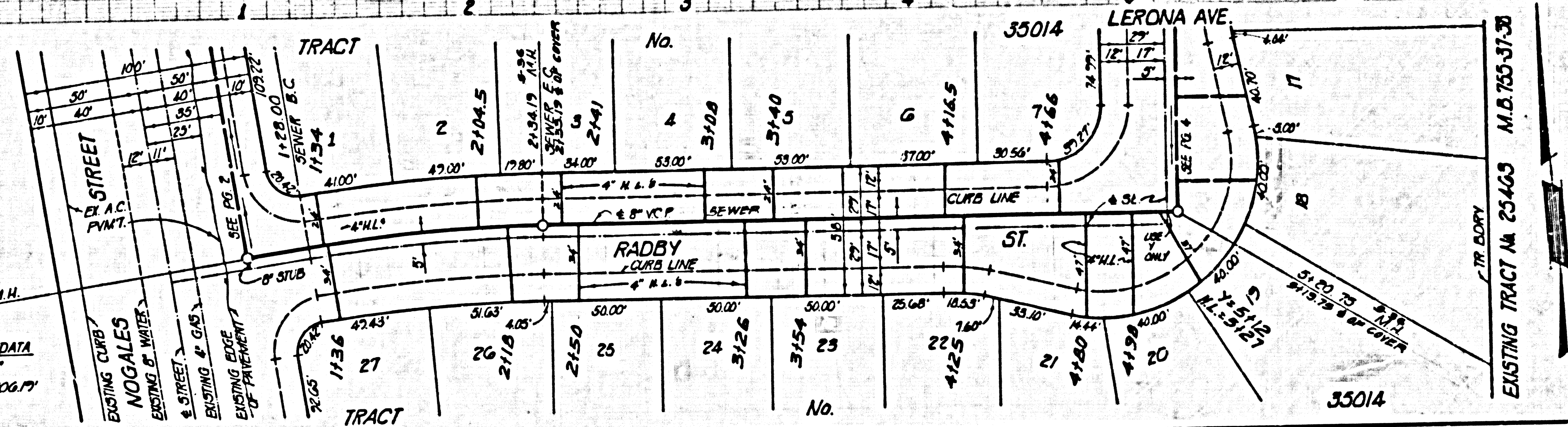
50124

NO L.A. COUNTY CHARGE FOR CONNECTIONS SEE SAN. DIST. FOR SPECIAL CONNECTION CHARGES

50125



SEWER CURVE DATA
R=705.07 L=106.77
T=53.17



NO L.A. COUNTY CHARGE FOR CONNECTIONS SEE SAN. DIST. FOR SPECIAL CONNECTION CHARGES

50126

