

TRACT NO. 36896 PRIVATE CONTRACT NO. 10147 C-231

W.S. 90 1 SHEET 2 PAGES 51061

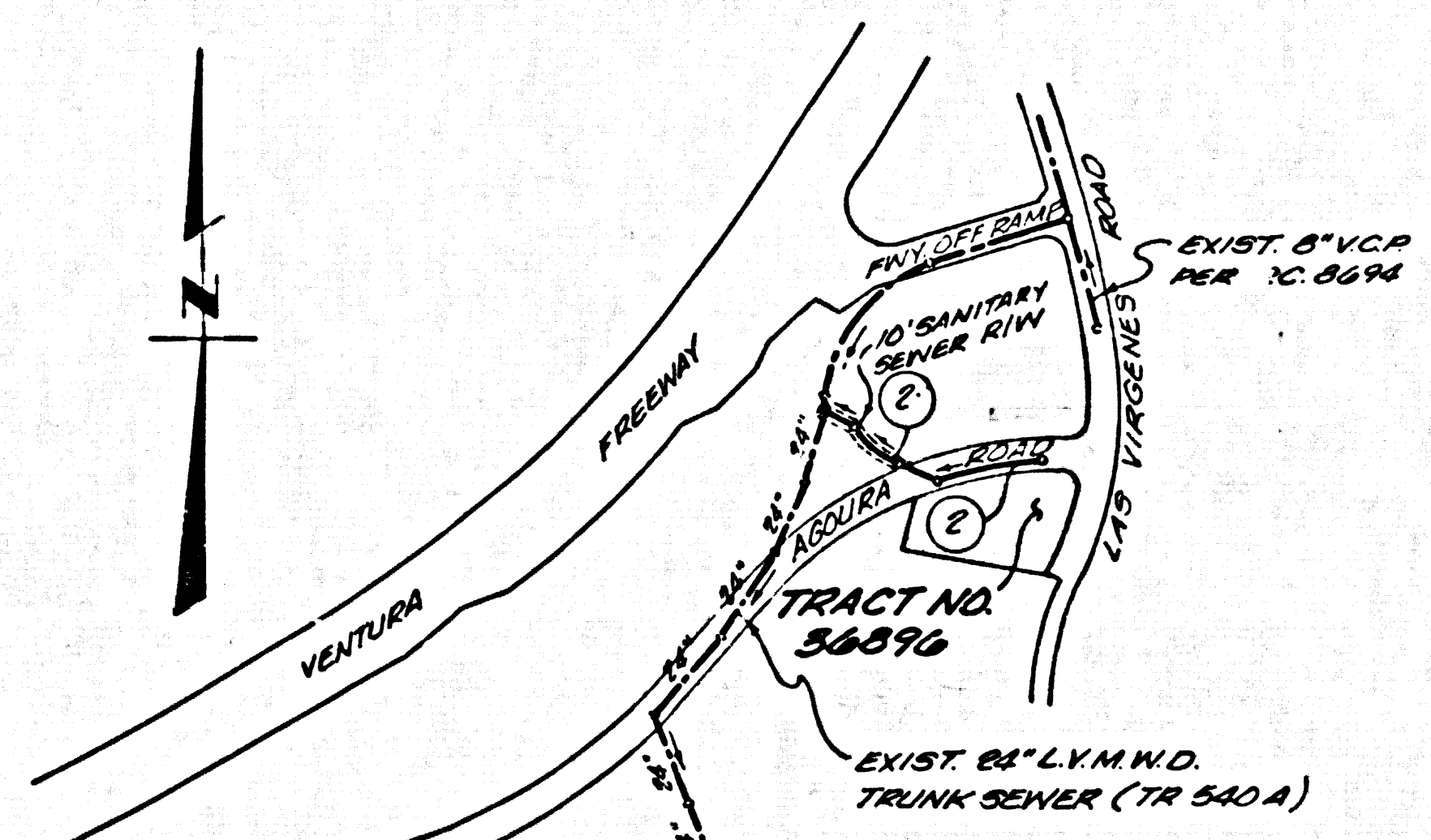
SCALE: VERT. 1"=4' HORIZ. 1"=40' JUNE 1, 1983 PREPARED IN THE OFFICES OF JENNINGS ENGINEERING COMPANY 7144 BALBOA BLVD. VAN NUYS CA. 91406 BY: Martin A. Lillman REG. C. E. No. 13168

Table listing materials and quantities for construction, including items like manhole frames, pipes, and manholes with their respective quantities.

COUNTY OF LOS ANGELES, CALIFORNIA STEPHEN J. KOONCE, COUNTY ENGINEER, LAS VIRGENES MUNICIPAL WATER DISTRICT (D) APPROVED: [Signature] DATE: 12/13/84 CHIEF ENGINEER

- GENERAL NOTES: 1. ELEVATIONS ARE IN FEET ABOVE U.S.C. & G.S. SEA LEVEL DATUM OF 1929. 2. NO REVISIONS SHALL BE MADE IN THESE PLANS WITHOUT THE APPROVAL OF THE COUNTY ENGINEER. 3. NO REPRESENTATIVE OF THE COUNTY ENGINEER WILL SURVEY OR LAY OUT ANY PORTION OF THE WORK. 4. GRADES TO WHICH THIS IMPROVEMENT IS TO BE CONSTRUCTED ARE SHOWN ON PLANS AND PROFILES. GRADE POINTS FOR TOP OF CURB, CENTER LINE OF STREETS, OR CENTER LINE OF ALLEYS ARE SHOWN BY CIRCLES ON PROFILES AT ALL POINTS BETWEEN DESIGNATED POINTS. THE GRADE SHALL BE ESTABLISHED SO AS TO CONFORM TO A STRAIGHT LINE DRAWN BETWEEN SAID DESIGNATED POINTS. 5. THE PRIVATE ENGINEER SHALL FURNISH THE COUNTY ENGINEER WITH GRADE SHEETS AND STATIONING FOR ALL HOUSE LATERALS AND "T" OR "Y" BRANCHES AND SHALL PROVIDE STAKES FOR THEM AT THEIR PROPER LOCATIONS WITH STATIONING PLAINLY MARKED. ALL HOUSE LATERALS SHALL BE CONSTRUCTED IN A STRAIGHT ALIGNMENT AT RIGHT ANGLES FROM THE MAIN LINE SEWER EXCEPT AS SHOWN ON THE PLANS. HOUSE LATERALS FROM CHIMNEYS SHALL NOT HAVE AN ANGLE OF LESS THAN 45° WITH THE MAIN LINE SEWER. ANY CHANGE IN ALIGNMENT SHALL BE REQUESTED IN WRITING BY THE PRIVATE ENGINEER. 6. THE PRIVATE ENGINEER SHALL FURNISH THE HOUSE LATERAL DEPTH AT THE PROPERTY LINE BELOW THE TOP OF CURB ELEVATION FOR EACH HOUSE LATERAL ON THE GRADE SHEET. 7. BEFORE WORK CAN BE STARTED, THE CONTRACTOR MUST OBTAIN A PERMIT TO EXCAVATE IN COUNTY STREETS FROM THE L.A. COUNTY ROAD DEPT. DISTRICT OFFICE NO. 3 AND PAY A FEE TO THE COUNTY ENGINEER, 250 S. VERMONT AVE., LOS ANGELES, CALIF. 90020, TO COVER THE COST OF CONSTRUCTION INSPECTION AND RECORD PLANS. 8. IF WORK IS TO BE DONE IN A STATE HIGHWAY, A PERMIT MUST BE OBTAINED FROM THE STATE OF CALIFORNIA, DIVISION OF HIGHWAYS, 120 SOUTH SPRING STREET, LOS ANGELES, CALIFORNIA. 9. APPROVAL OF THIS PLAN BY THE COUNTY OF LOS ANGELES DOES NOT CONSTITUTE A REPRESENTATION AS TO THE ACCURACY OF THE LOCATION OF OR THE EXISTENCE OR NON-EXISTENCE OF ANY UNDERGROUND UTILITY PIPE, OR STRUCTURE WITHIN THE LIMITS OF THE PROJECT. THIS NOTE APPLIES TO ALL PAGES. 10. REFER TO SECTION 116.41 OF THE STANDARD SPECIFICATIONS, REGARDING SAFETY ORDERS. 11. PRIOR TO THE RESUMPTION OF THE REQUIRED SEWER CONSTRUCTION, THE CONTRACTOR SHALL OBTAIN AND FILE WITH THE COUNTY ENGINEER COPIES OF A PERMIT TO EXCAVATE IN COUNTY STREETS FROM THE LOS ANGELES COUNTY ROAD DEPARTMENT, A PERMIT FOR EXCAVATIONS AND TRENCHES FROM THE STATE OF CALIFORNIA, DIVISION OF INDUSTRIAL SAFETY AND A CERTIFICATE OF WORKERS COMPENSATION INSURANCE WITH THE COUNTY ENGINEER, 250 S. VERMONT AVE. RM. 400, LOS ANGELES, CALIFORNIA 90020, NAMED AS THE CONTRACTOR HOLDER TO BE ADMITTED TO THE PROJECT BY CONCESSIONARY OR POLICY. 12. CONTRACTOR TO OBTAIN PERMISSION FROM L.V.M.W.D. (913-880-4110) AT LEAST 48 HOURS PRIOR TO STARTING ANY WORK WITHIN L.V.M.W.D. RIGHT OF WAY. CONSTRUCTION NOTES: 1. WORK SHALL BE CONSTRUCTED ACCORDING TO THE STANDARD SPECIFICATIONS FOR PUBLIC WORKS CONSTRUCTION (THE EDITION WITH 1983 SUPPLEMENTS AND COUNTY ENGINEER SPECIAL PROVISIONS FOR THE CONSTRUCTION OF SANITARY SEWERS DATED SEPT. 15, 1978) AND SHALL BE PROSECUTED ONLY IN THE PRESENCE OF THE COUNTY ENGINEER. 2. THE CONTRACTOR SHALL NOTIFY THE CONSTRUCTION DIVISION BY TELEPHONE, 414 SOUTH 41ST ST., AT LEAST TWENTY-FOUR HOURS BEFORE STARTING ANY WORK UNDER THIS CONTRACT. 3. HOUSE LATERALS TO BE CONSTRUCTED WITH INVERTS AT PROPERTY LINE 4 FEET BELOW CURB GRADE EXCEPT AS NOTED. 4. WYE OR T BRANCHES MAY BE USED FOR CONNECTIONS TO MAINLINE SEWERS EXCEPT AS NOTED. 5. ALL STRUCTURES SHALL BE EITHER BRICK MANHOLES PER 5.2 OF PRECAST CONCRETE MANHOLES PER 5.36, EXCEPT AS NOTED. 6. PROTECT STAKES ON THE PROPERTY LINE OR PROPERTY LINES PRODUCED AT RIGHT ANGLES TO THE SEWER LINE AT THE CENTER LINE OF EACH MANHOLE. 7. MANHOLE TOPS IN UNIMPROVED RIGHTS OF WAY TO BE SIX INCHES ABOVE FINISHED GRADE. 8. WITHIN CLAY PIPE JOINTS SHALL BE THE "T" OR "Y" PER STANDARD SPECIFICATIONS SECTION 206-2. 9. IF A POWER POLE IS WITHIN THREE FEET OF THE SEWER, THE SEWER SHALL BE ENCASED, PER 5.25, CASE II, TWO FEET ON EACH SIDE FROM THE POINT OF INTERFERENCE. 10. IF DURING THE COURSE OF CONSTRUCTION IT IS DETERMINED THAT THERE IS LESS THAN 18 INCH FEET OF COVER OVER THE TOP OF A MAIN LINE OR HOUSE LATERAL T.C.P. SEWER WHICH IS NOT INDICATED ON THE PLANS, THE PIPE SHALL BE ENCASED PER 5.25, CASE II UNLESS OTHERWISE APPROVED BY THE COUNTY ENGINEER. 11. ALL JOINTS BETWEEN CAST IRON PIPE AND VITRIFIED CLAY PIPE SHALL BE MADE WITH A RUBBER SLEEVE JOINT, TYPE "C" OR "D", WITH GASKETING IF NECESSARY PER STANDARD SPECIFICATIONS, SECTION 206-3. 12. SEWERS TO BE TESTED FOR LEAKAGE PER SECTION 206-3.2 OF THE STANDARD SPECIFICATIONS AND SPECIAL PROVISIONS. 13. RESURFACE ALL TRENCHES WITHIN PAVED AREAS TO MEET L.A. COUNTY ROAD DEPT. OR CALIFORNIA STATE HIGHWAY REQUIREMENTS IN ACCORDANCE WITH PERMITS. 14. FULL COMPLIANCE WITH SECTION 206-1.3 OF THE SPECIAL PROVISIONS WILL BE SECURED FOR BACKFILL IN STREETS. CERTIFICATION OF BACKFILL COMPACTION AND SAND EQUIVALENTS BY A QUALIFIED, REGISTERED TESTING LABORATORY SHALL BE PROVIDED BY THE PERMITTEE PRIOR TO THE ISSUANCE OF A CERTIFICATE OF PARTIAL ACCEPTANCE. 15. SPECIAL BACKFILL IN PLACE CONSTRUCTION: (A) BACKFILL TRENCH AND REPLACE OTHER SPECIAL BACKFILL IN PLACE CONSTRUCTION. (B) BACKFILL TRENCH AND REPLACE OTHER SPECIAL BACKFILL IN PLACE CONSTRUCTION. (C) ALL BACKFILL SHALL BE COMPACTED TO A MINIMUM OF 95% OF MAXIMUM DENSITY PER A.S.T.M. STD. METHOD OF TEST D998-87 BY 18 INCHES. ACCEPTABLE CERTIFICATION BY CALABASAS BLDG. DIST. 91.

B.M. CYR009 ELEV. 768.933 RD. B.M. TAG IN C.B. 2 FT. S. B.C.R. 55 FT. 3" AND 32 FT. E. CENTERLINE INT. LAS VIRGENES ROAD & OLD FREEWAY ON RAMP AT MOBIL STA. MALIBU QUAD. 19 02



INDEX MAP P.C. 10147 - TR. NO. 36896 SCALE 1"=600'

REVISION NO. 1 DATE 9-15-85 ADDED M.H. AT STA. 2+51.75, RAISED GRADE BETWEEN STA. 2+51.75 AND STA. 6+47.56 TO AVOID INTERFERENCE WITH EXIST. R.F.P. CONDUITS. APPROVED: [Signature] 9-16-85 OFFICE OF DIRECTOR OF PUBLIC WORKS

NO L.A. COUNTY CHARGE FOR CONNECTIONS DOUBLE SCALE SEE L.V.M.W.D. FOR SPECIAL CONNECTION CHARGES

51062

