

B.M. CY 7547 ELEV. 816.027
 STATE H.W. MON. IN WELL 10" DN. ON E. LIBERTY
 CANYON ROAD UNDER CROSSING 30 FT. SEWER
 BOUND ON OFF RAMP VENTURA FWY.
 MALIBU QUAD. 19 20

DOUBLE SCALE

- GENERAL NOTES:**
- ELEVATIONS ARE IN FEET ABOVE U.S.C. & G.S. SEA LEVEL DATUM OF 1929.
 - NO REVISIONS SHALL BE MADE IN THESE PLANS WITHOUT THE APPROVAL OF THE COUNTY ENGINEER.
 - NO DIMENSIONS OF THE COUNTY ENGINEER WILL SURVEY OR LAY OUT ANY PORTION OF THE WORK.
 - GRADES TO WHICH THIS IMPROVEMENT IS TO BE CONSTRUCTED ARE SHOWN ON PLANS AND PROFILES. GRADE POINTS FOR TOP OF CURBS, CENTER LINE OF STREETS, OR CENTER LINE OF ALLEYS ARE SHOWN BY CIRCLES ON PROFILES. AT ALL POINTS BETWEEN DESIGNATED POINTS THE GRADE SHALL BE ESTABLISHED SO AS TO CONFORM TO A STRAIGHT LINE DRAWN BETWEEN SAID DESIGNATED POINTS.
 - THE PRIVATE ENGINEER SHALL FURNISH THE COUNTY ENGINEER WITH GRADE SHEETS AND STATIONING FOR ALL HOUSE LATERALS AND 12" OR 16" BRANCHES AND SHALL PROVIDE STAKES FOR THESE AT THEIR PROPER LOCATIONS WITH STATIONING PLAINLY MARKED. ALL HOUSE LATERALS SHALL BE CONSTRUCTED IN A STRAIGHT ALIGNMENT AT RIGHT ANGLES FROM THE MAIN LINE SEWER EXCEPT AS SHOWN ON THE PLANS. HOUSE LATERALS FROM CHIMNEYS SHALL NOT HAVE AN ANGLE OF LESS THAN 45° WITH THE MAIN LINE SEWER. ANY CHANGE IN ALIGNMENT SHALL BE REQUESTED IN WRITING BY THE PRIVATE ENGINEER.
 - THE PRIVATE ENGINEER SHALL FURNISH THE HOUSE LATERAL STOPS AT THE PROPERTY LINE BELOW THE TOP OF CURB ELEVATION ON EACH HOUSE LATERAL ON THE GRADE SHEET.
 - BEFORE WORK CAN BE STARTED, THE CONTRACTOR MUST OBTAIN A PERMIT TO EXCAVATE IN COUNTY STREETS FROM THE L.A. COUNTY ROAD DEPT., DISTRICT OFFICE NO. 3, AND PAY A FEE TO THE COUNTY ENGINEER, 550 S. VERMONT AVE., RM. 466, L.A. 80020 TO COVER THE COST OF CONSTRUCTION INSPECTION AND RECORD PLANS.
 - IF WORK IS TO BE DONE IN A STATE HIGHWAY, A PERMIT MUST BE OBTAINED FROM THE STATE OF CALIFORNIA, DIVISION OF HIGHWAYS, 138 SOUTH SPRING STREET, LOS ANGELES, CALIFORNIA.
 - APPROVAL OF THIS PLAN BY THE COUNTY OF LOS ANGELES DOES NOT CONSTITUTE A REPRESENTATION AS TO THE ACCURACY OF THE LOCATION OF OR THE EXISTENCE OR NON-EXISTENCE OF ANY UNDERGROUND UTILITY PIPE, OR STRUCTURE WITHIN THE LIMITS OF THE PROJECT. THIS NOTE APPLIES TO ALL PAGES.
 - REFER TO SECTION 7.18.4.1 OF THE STANDARD SPECIFICATIONS, REGARDING SAFETY ORDERS.
 - PRIOR TO THE ISSUANCE OF THE ALLOWED SEWER CONSTRUCTION PERMIT, THE CONTRACTOR SHALL OBTAIN AND FILE WITH THE COUNTY ENGINEER COPIES OF A PERMIT TO EXCAVATE IN COUNTY STREETS FROM THE LOS ANGELES COUNTY ROAD DEPARTMENT, A PLAN AND SPECIFICATIONS AND TRENCHES FROM THE OFFICE OF CALIFORNIA DIVISION OF INDUSTRIAL SAFETY AND A CERTIFICATE OF WORKERS COMPENSATION INSURANCE WITH THE DEPARTMENT OF COUNTY ENGINEER, 550 S. VERMONT AVE., R.M. 406, LOS ANGELES, CALIFORNIA 90020, NAMED AS THE CERTIFICATE NUMBER TO BE NOTIFIED 30 DAYS PRIOR TO CANCELLATION OF PERMIT.

PROFILE, ALIGNMENT AND GRADE OF
SANITARY SEWERS PAGE 1

TO BE CONSTRUCTED IN
 TRACT No. 31551

PRIVATE CONTRACT NO. 10149
 C-241

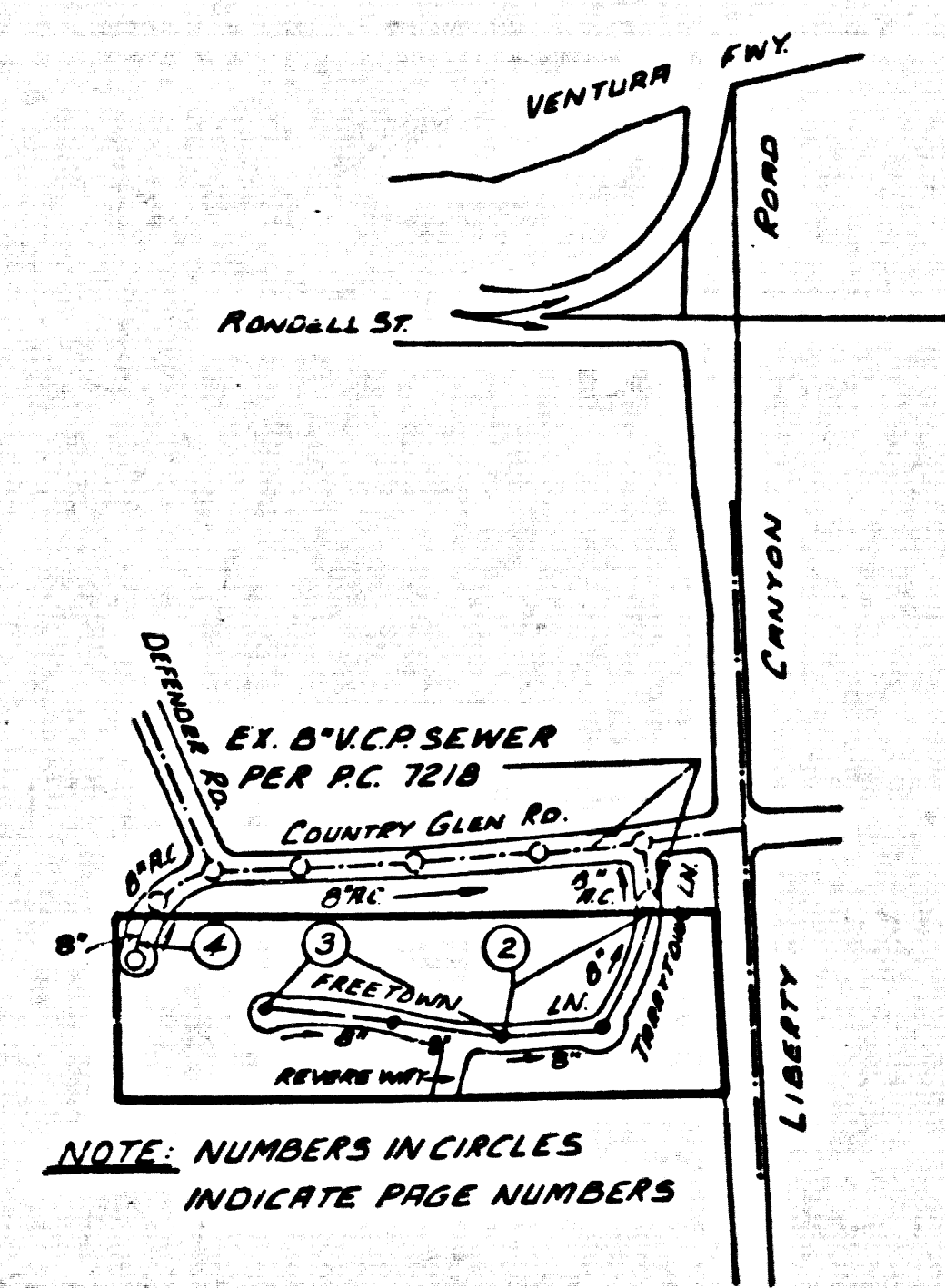
W.S. 30
 2 SHEETS; 3 PAGES

50259

SCALE: VERT. 1"=4'
 HORIZ. 1"=40'
 SEPT, 1973
 PREPARED IN THE OFFICES OF
SPINDLE ENGINEERING CORPORATION
 13120 RIVERVIEW DR. SHERMAN OAKS, CA 91263 SUITE 400
 BY *Spindle*
 REG. C.E. No. 73194

THE FOLLOWING LATEST REVISED STANDARD PLANS ON FILE IN THE OFFICE OF THE COUNTY ENGINEER SHALL APPLY IN THE CONSTRUCTION OF THIS PROJECT.

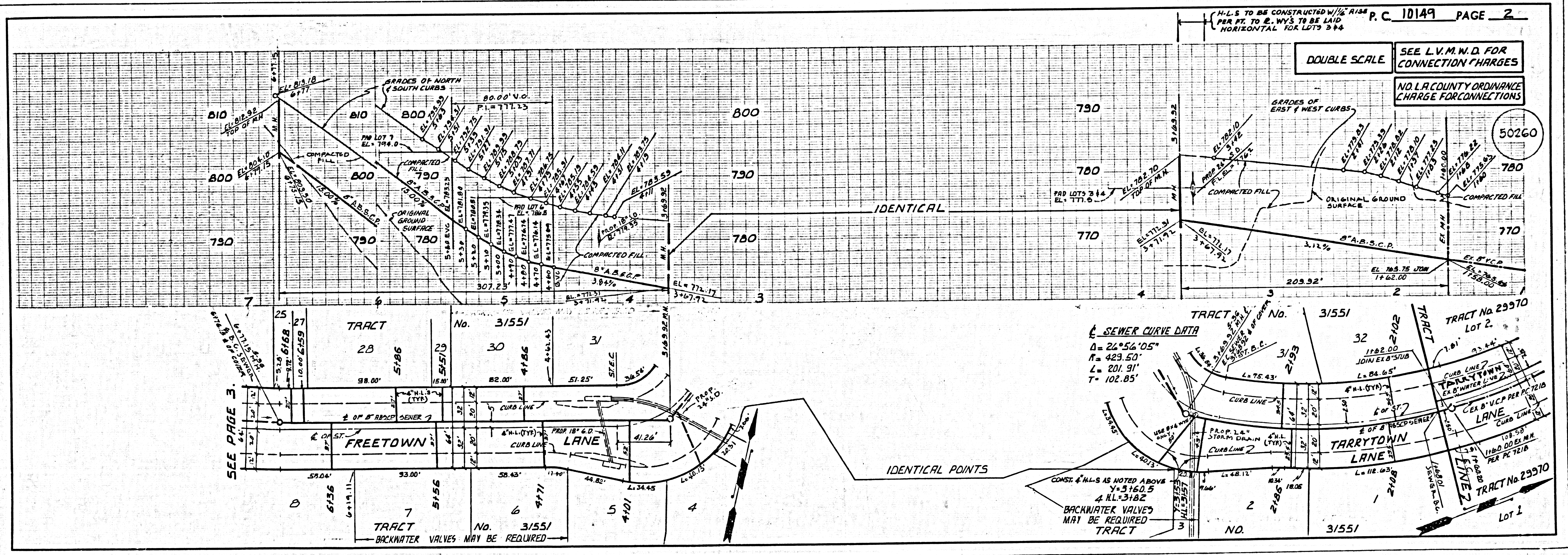
SIGNING	5-1
MINIMUM PUBLIC SAFETY REQUIREMENTS	5-2
BRICK MANHOLE	5-3
STANDARD MANHOLE STEP	5-17
WORKING FOR SEWER PIPE	5-20
CHANGING AND RECHANGING	5-21
WYE OR TEE SUPPORT	5-26
ALLOWABLE TRENCH WIDTHS	5-28
LOCATING MANHOLE PLAIN AND COVER	5-29
NON-REINFORCED PRECAST CONCRETE MANHOLE	5-30



- CONSTRUCTION NOTES (CONT'D)**
- WYE BRANCHES ONLY MAY BE USED FOR CONNECTION TO MAINLINE SEWER IF A.R.S.C.P. IS USED.
 - ALL JOINTS BETWEEN CAST IRON PIPE AND A.R.S.C.P. SHALL BE MADE WITH APPROVED FITTINGS.
 - FULL COMPLIANCE WITH PART II OF THE SPECIAL PROVISIONS IS REQUIRED FOR THE INSTALLATION OF A.R.S. COMPOSITE PIPE.
 - MANHOLE WATER STOP GASKETS AND CLAMPS ARE REQUIRED FOR THE CONNECTION OF A.R.S. COMPOSITE PIPE TO MANHOLE STRUCTURES.
 - A.R.S. SOLID WALL PIPE MUST BE USED FOR WYE AND HOUSE LATERAL CONNECTIONS TO A.R.S. COMPOSITE MAIN LINE SEWER PIPE.
 - A.R.S. COMPOSITE PIPE SHALL BE BEDDED IN CONFORMANCE WITH THE TABLE IN SECTION 8.3.1 OF PART II OF THE SPECIAL PROVISIONS.
 - 3 DEGREE DEFLECTION COUPLERS SHALL BE USED TO ACCOMPLISH RADII OF CURVATURE LESS THAN 380'.

- CONSTRUCTION NOTES:**
- WORK SHALL BE CONSTRUCTED ACCORDING TO THE STANDARD SPECIFICATIONS FOR PUBLIC WORKS CONSTRUCTION (1982 EDITION) WITH 1983 SUPPLEMENTS AND COUNTY ENGINEER SPECIAL PROVISIONS FOR THE CONSTRUCTION OF SANITARY SEWERS DATED 8-22-82. ALL SHALL BE PROSECUTED ONLY IN THE PRESENCE OF THE COUNTY ENGINEER.
 - THE CONTRACTOR SHALL NOTIFY THE CIVIL DIVISION BY TELEPHONE (213-8154) AT LEAST TWENTY-FOUR HOURS BEFORE STARTING ANY WORK UNDER THIS CONTRACT.
 - HOUSE LATERALS TO BE CONSTRUCTED WITH INVERTS AT PROPERTY LINE & FEET BELOW CURB GRADE EXCEPT AS NOTED.
 - WYE OR THE BRANCHES MAY BE USED FOR CONNECTIONS TO MAINLINE SEWERS EXCEPT AS NOTED.
 - ALL STRUCTURES SHALL BE EITHER BRICK MANHOLES PER 5-3 OR PRECAST CONCRETE MANHOLES PER 5-26, EXCEPT AS NOTED.
 - PROVIDE STAKES ON THE PROPERTY LINE OR PROPERTY LINES PRODUCE AT RIGHT ANGLES TO THE SEWER LINE AT THE CENTER LINE OF EACH MANHOLE.
 - MANHOLE TOPS IN UNIMPROVED RIGHTS OF WAY TO BE SIX INCHES ABOVE FINISHED GRADE.
 - VITRIFIED CLAY PIPE JOINTS SHALL BE TYPE "B", "C" OR "D" PER STANDARD SPECIFICATIONS SECTION 308-2.
 - IF A POWER POLE IS WITHIN THREE FEET OF THE SEWER, THE SEWER SHALL BE ENCASED, PER 5-23, CASE 2, TWO FEET ON EACH SIDE FROM THE POINT OF INTERFERENCE.
 - IF DURING THE COURSE OF CONSTRUCTION IT IS DETERMINED THAT THERE IS LESS THAN FOUR FEET OF COVER OVER THE TOP OF A MAIN LINE OR HOUSE LATERAL V.C.P. SEWER WHICH IS NOT INDICATED ON THE PLANS, THE PIPE SHALL BE ENCASED PER 5-23, CASE 2 UNLESS OTHERWISE APPROVED BY THE COUNTY ENGINEER.
 - ALL JOINTS BETWEEN CLAY PIPE AND VITRIFIED CLAY PIPE SHALL BE MADE WITH A RUBBER GASKET JOINT, TYPE "C" OR "D", WITH GASKETS IF NECESSARY PER STANDARD SPECIFICATIONS, SECTION 308-2.
 - SEWERS TO BE AIR PRESSURED TESTED FOR LEAKAGE PER SEC. 308-1.6 OF THE STANDARD SPEC'S & SPECIAL PROVISIONS IN ACCORDANCE WITH PERMITS.
 - REPLACE ALL TRENCHES WITHIN PAVED AREAS TO MEET L.A. COUNTY ROAD DEPT. OR CALIFORNIA STATE HIGHWAY REQUIREMENTS IN ACCORDANCE WITH PERMITS.
 - FULL COMPLIANCE WITH SECTION 306.1.5.5 OF THE SPECIAL PROVISIONS WILL BE REQUIRED FOR BACKFILL IN STREETS. CERTIFICATION OF BACKFILL COMPACTION AND SAND EQUIVALENTS BY A QUALIFIED, REGISTERED TESTING LABORATORY SHALL BE PROVIDED BY THE CONTRACTOR PRIOR TO THE ISSUANCE OF A CERTIFICATE OF PARTIAL ACCEPTANCE.
 - SPECIAL BACKFILL IN EASEMENT CONSTRUCTION: (A) BACKFILL TRENCH AND REPLACE OTHER EARTH 50 AS TO ACHIEVE THE NATURAL OR PRESSED SANDS AND SLOPES SHOWN ON THE DRAWING IN THE APPROVED PER THIS DEVELOPMENT BY THE DIVISION OF SAFETY DIVISION; (B) ALL BACKFILL AND EARTH REPLACED SHALL BE COMPACTED TO A MINIMUM OF 90% OF MAXIMUM DENSITY PER A.S.T.M. METHOD OF TEST D-1557 AS MODIFIED. ACCEPTABLE CERTIFICATION OF SUCH COMPACTION SHALL BE SUBMITTED TO THE ENVIRONMENTAL DEVELOPMENT DIVISION.

COUNTY OF LOS ANGELES, CALIFORNIA
 STEPHEN J. KOONCE COUNTY ENGINEER LRS VIRGENIA'S MUNICIPAL WATER DISTRICT
 APPROVED: *Madeline L. Murphy* 6-21-73 DATE APPROVED: *Wesley Stokes* 6/10/73
 CHECKED: *Ralph David Seant* 6/10/73 DATE
 REG. C.E. NO. 16883
 CALABASAS BLDG. DIST. 31



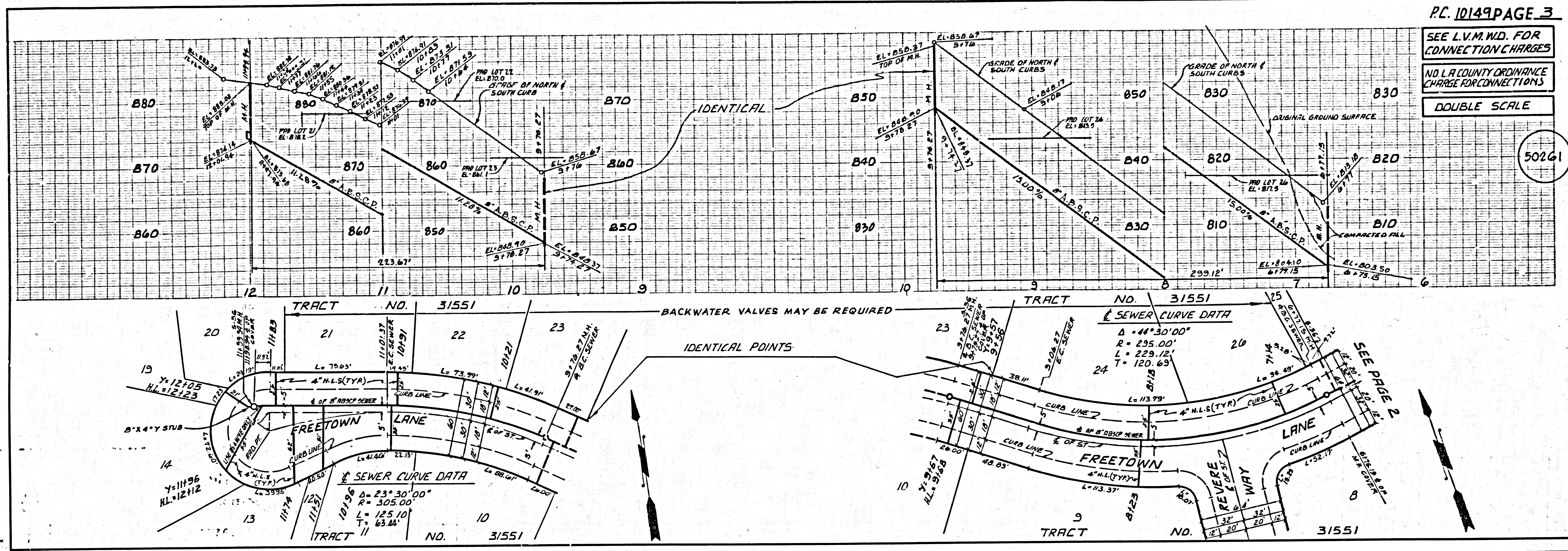
94101-39

SEE L.V.M.W.D. FOR CONNECTION CHARGES

NO L.A. COUNTY ORDINANCE CHARGE FOR CONNECTIONS

DOUBLE SCALE

50261



PAGE 29

SEE L.V.M.W.D. FOR CONNECTION CHARGES

NO L.A. COUNTY ORDINANCE CHARGE FOR CONNECTIONS

DOUBLE SCALE

50262

